



Nature-Positive Solutions  
for Shifting Agrifood  
Systems to More Resilient  
and Sustainable Pathways

# NATURE+ INITIATIVE

---

**Nature-positive solutions** for  
shifting agrifood systems to  
more resilient and sustainable  
pathways

# NATURE+ Initiative Overview



Nature-Positive Solutions  
for Shifting Agrifood  
Systems to More Resilient  
and Sustainable Pathways

How can we re-imagine, co-create and implement agrifood systems that deliver food and livelihoods, while ensuring that agriculture helps us stay within planetary boundaries?

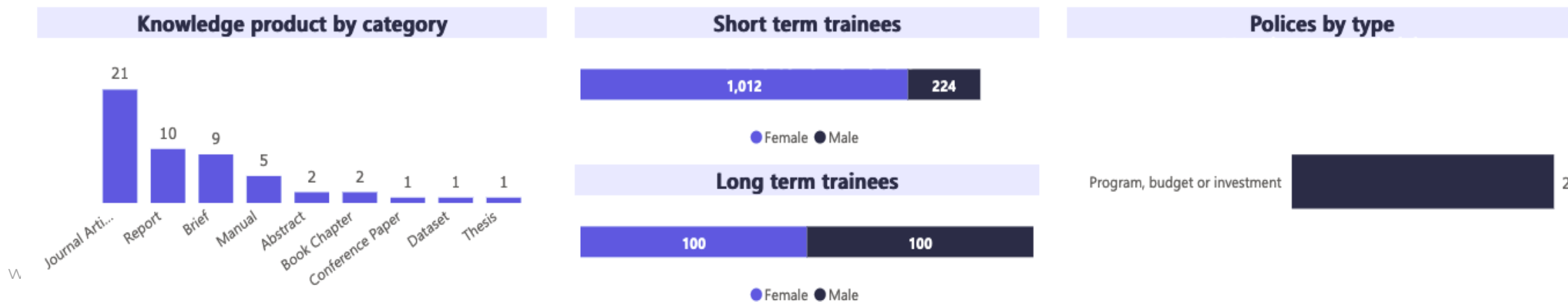


# 2022 Implementation Overview of Key Results



Nature-Positive Solutions  
for Shifting Agrifood  
Systems to More Resilient  
and Sustainable Pathways

- Work in **5** target countries initiated: **Burkina Faso, Colombia, India, Kenya** and **Vietnam**
- **52** knowledge products developed
- **10** Ph.D. students
- **3** Capacity Sharing for Development activities delivered
- **2** policy changes



# 2022 Implementation Key Facts



Nature-Positive Solutions for Shifting Agrifood Systems to More Resilient and Sustainable Pathways

- Led by Bioversity International and CIAT, **6** other CGIAR centers participate
- We collaborate with **7 Initiatives** in addition to the regional Initiatives
- Nature+ impacts have **influence beyond our 5 target countries**
- **5 innovations** are ready for implementation

## Contributing CGIAR Centers



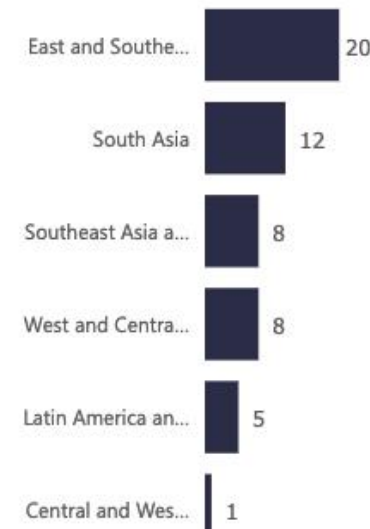
## Results by gender and climate tag



## National focus contribution



## Results by regions



## Innovation readiness



# 2022 Implementation Key Contributors



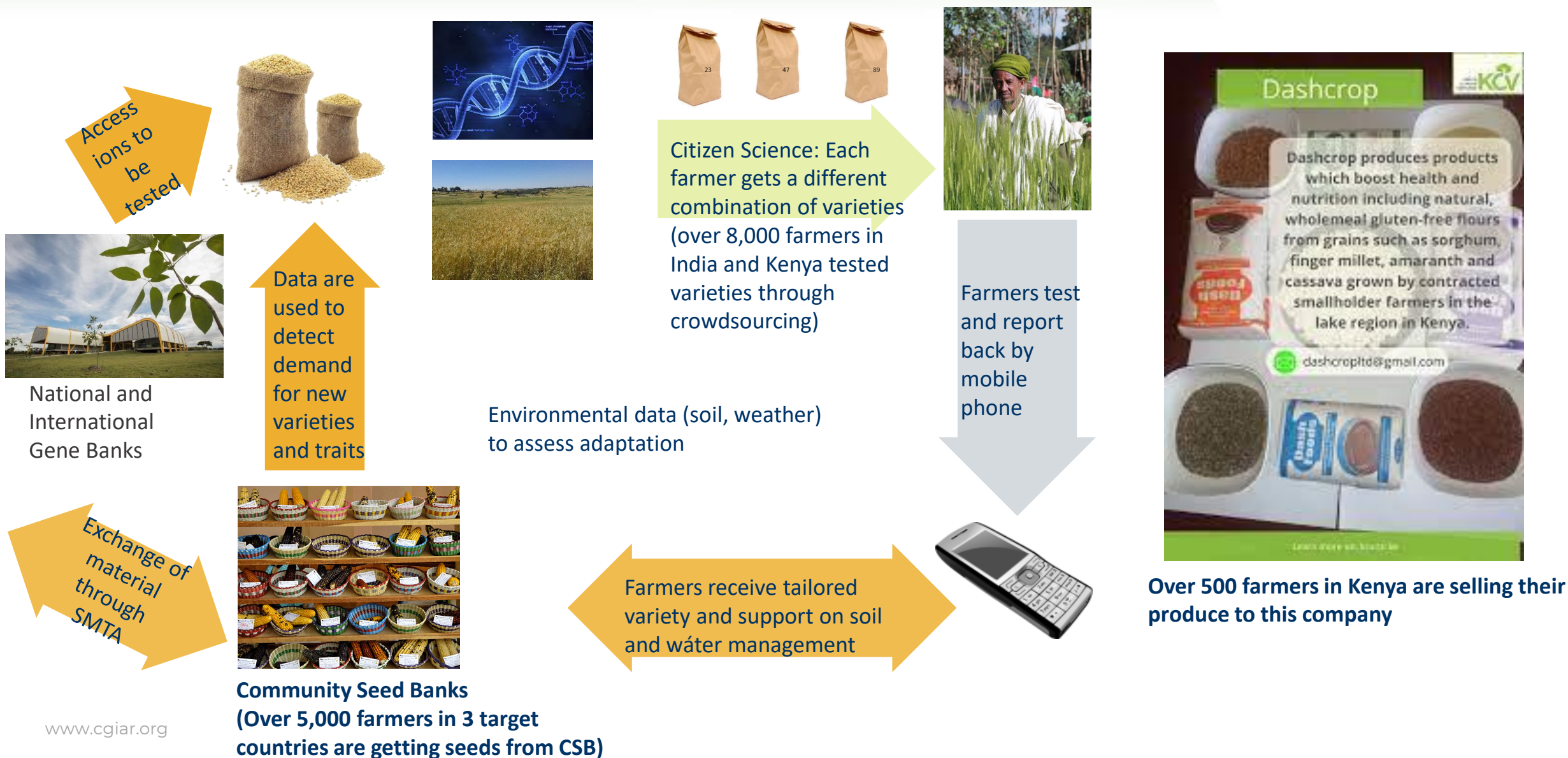
Nature-Positive Solutions  
for Shifting Agrifood  
Systems to More Resilient  
and Sustainable Pathways

- Nature+ **partners are global and diverse**
- They include local **NGOs, universities** and **governments**
- Partners are **critical to delivering innovations at scale**
- **Innovative partnerships** in place **with WWF and UNEP**

## Contributors



# From markets to conservation



# Diversity For Restoration 2022 Implementation Highlights

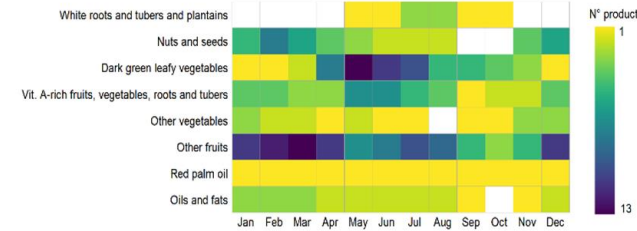


Nature-Positive Solutions  
for Shifting Agrifood  
Systems to More Resilient  
and Sustainable Pathways

**Burkina Faso**

**DIVERSITY for RESTORATION**

1. Where is your restoration site located?  
2. What are the characteristics of the restoration site?  
3. What are the restoration objectives?  
4. How many and what kind of species would you like to plant?  
5. Specify additional options and finish



**Kenya**

Welcome to my GeoFarm!

**M-PESA**

**BLOCK CHAIN TECHNOLOGY**



# Recycling agro-waste for resource recovery

## 2022 Implementation Highlights

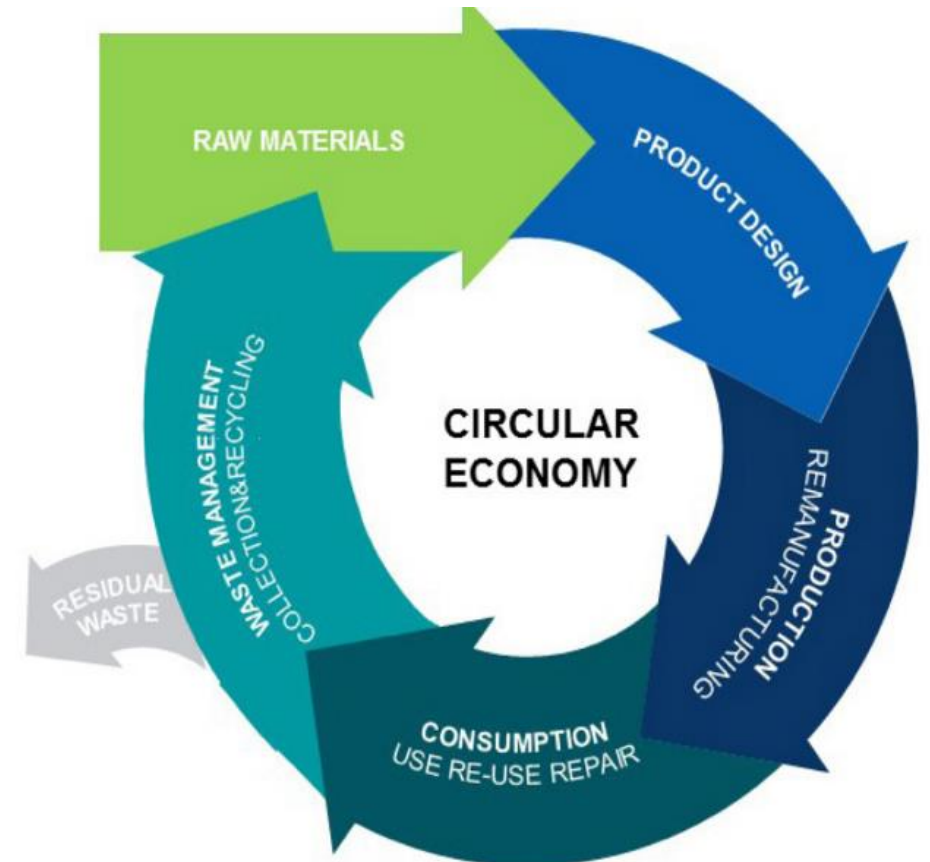


Nature-Positive Solutions  
for Shifting Agrifood  
Systems to More Resilient  
and Sustainable Pathways

Country investment climate for circular bioeconomy completed for **Burkina Faso, Kenya** and **India, Colombia** and **Vietnam** ongoing.

**24 circular bioeconomy business models** identified and analyzed across the **5** target countries

Stakeholder **workshops** organized to present, validate and promote circular bioeconomy models in target countries





# Circular bioeconomy innovation bundles for rural typologies - 2022 Implementation Highlights



Nature-Positive Solutions  
for Shifting Agrifood  
Systems to More Resilient  
and Sustainable Pathways

Catalogue of circular bioeconomy business models across target countries

**Knowledge products  
Business models**

- Biogas production
- Bio-innovation
- Biogas market
- Institutional biogas plant

October 2022

November 2022

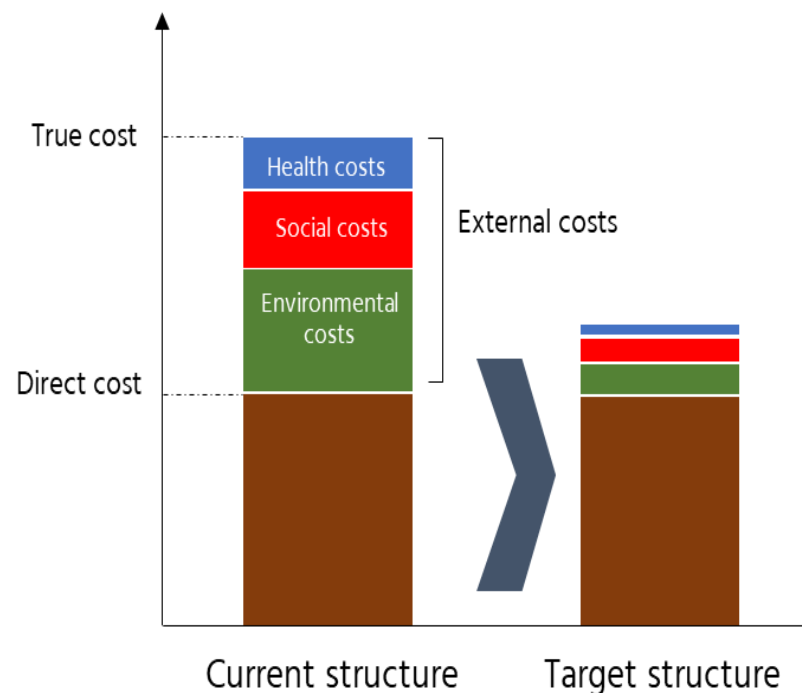
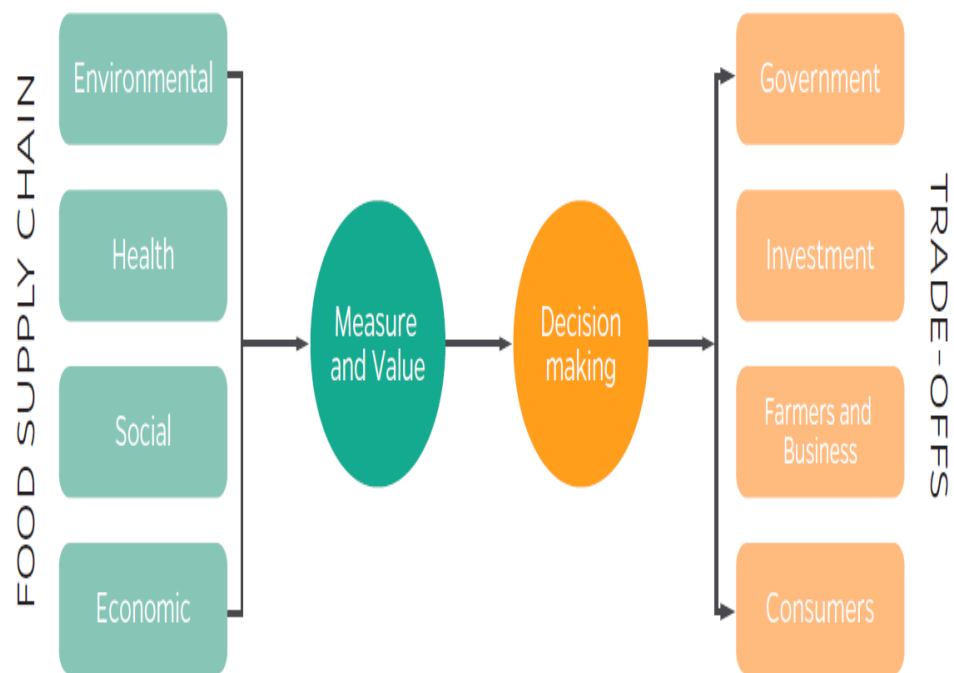
December 2022

# True cost accounting (TCA)

**True Cost Accounting (TCA)** is the systemic measurement and valuation of environmental, social, health, and economic costs and benefits to facilitate sustainable choices in food systems

True Cost Accounting theoretical model

The True Costs of Food



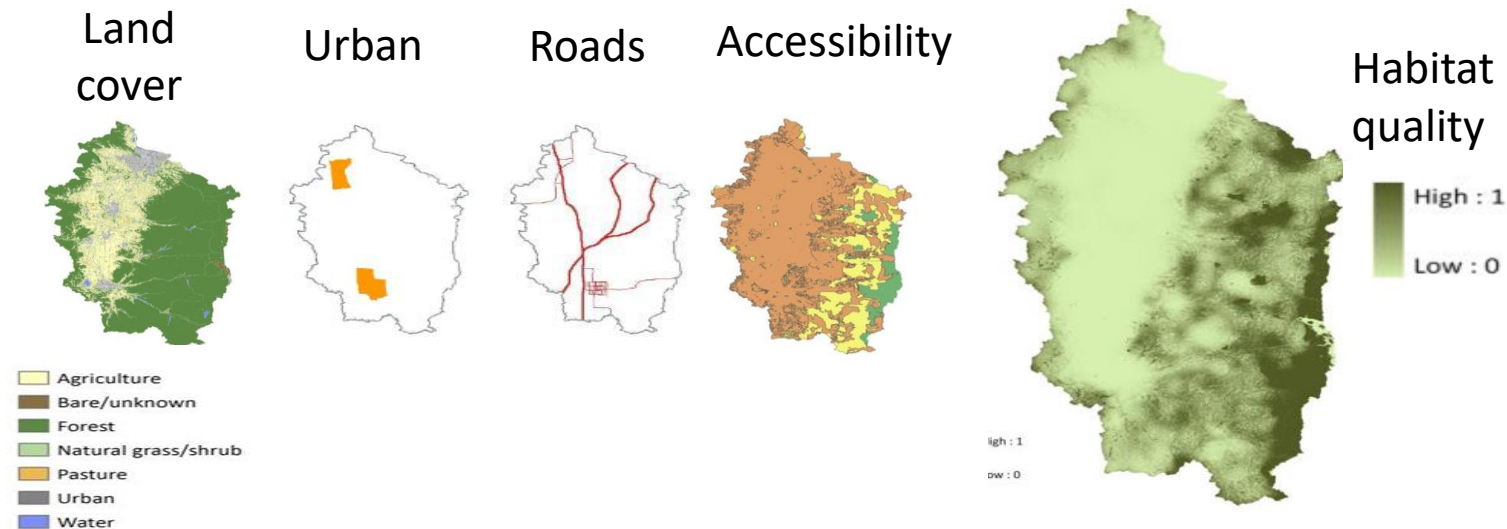
Source: Adapted from Aspenson, 2020.

# Integrated Valuation of Ecosystem Services and Tradeoffs (InVEST)



Nature-Positive Solutions  
for Shifting Agrifood  
Systems to More Resilient  
and Sustainable Pathways

- Defines how changes in an ecosystem's structure and function can affect **flows and values of ecosystem services**.
- Integrated Valuation of Ecosystem Services and Tradeoffs (**InVEST**) model structure and input data acquired/processed





# We are on track to achieving the outcomes

## Highlights from 2023 work plan:

- Implement the *in situ-ex situ* integrated framework
- Embedding Nature + in **plans for local and national governments**
- **Improving enabling environment** for traditional crops and varieties in relation to seed systems
- **Enhancing capacity** of farmers to manage soil, water, waste and biodiversity
- Implementing and publishing true cost accounting in **policy** and funder discussions
- Circular bioeconomy innovation hub for **co-designing, piloting and scaling up/out inclusive business models**
- Strengthening **existing** and creating **new partnerships** at local, national and international level
- Further strengthening **collaboration with other CGIAR Initiatives**
- **Align some of your indicators to the CBD-GBF.**

# Thank you!

Thank you for your time and attention.

**The continued support of CGIAR's network of funders and supporters is critical to the success of the CGIAR Research Portfolio.**

## **Carlo Fadda**

Nature Positive Initiative Lead

Email: [c.fadda@cgiar.org](mailto:c.fadda@cgiar.org)



Nature-Positive Solutions  
for Shifting Agrifood  
Systems to More Resilient  
and Sustainable Pathways