



Drop-in call: Gender Equality, Youth and Social Inclusion Impact Area

Update for the CGIAR System Council

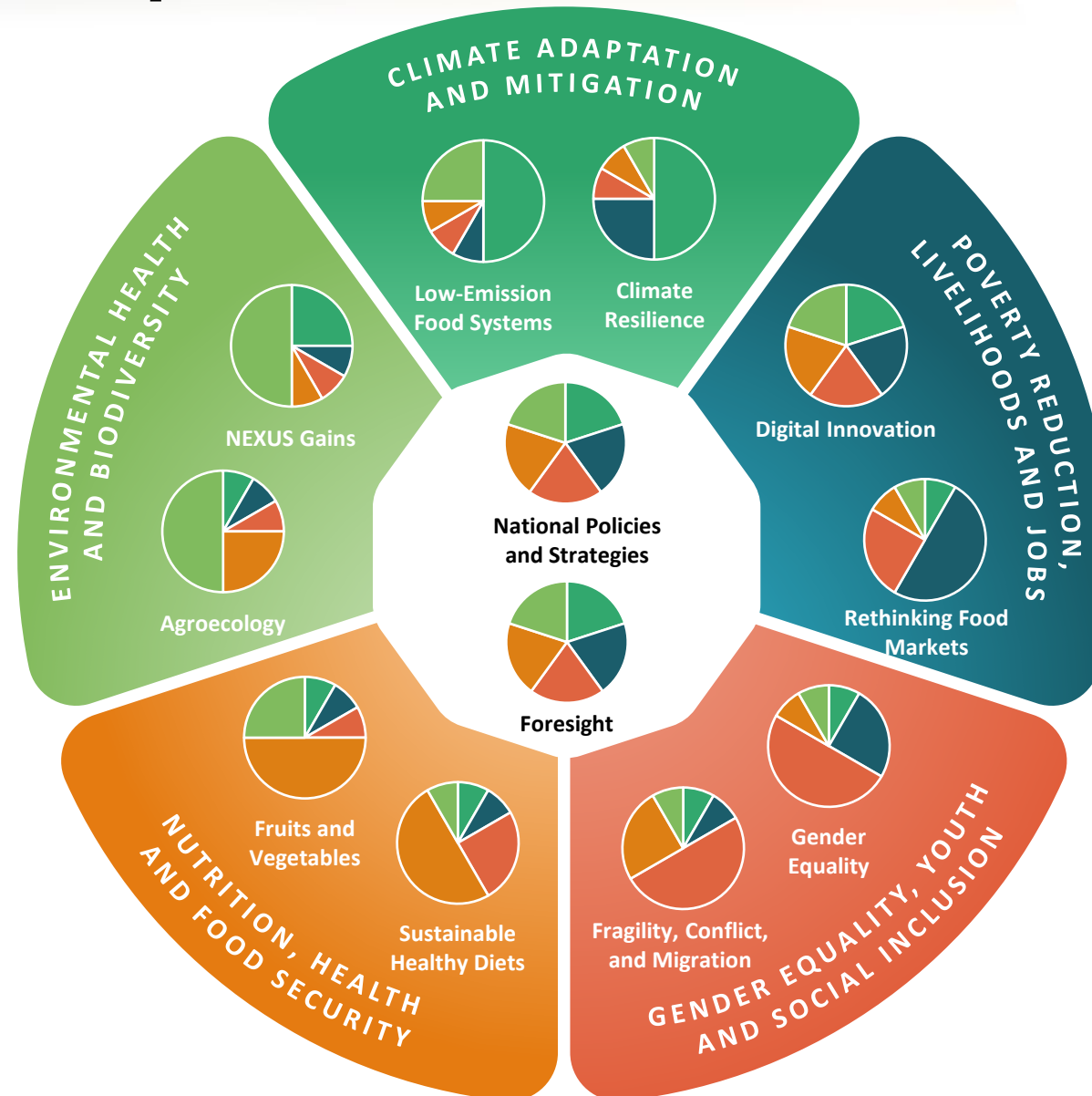
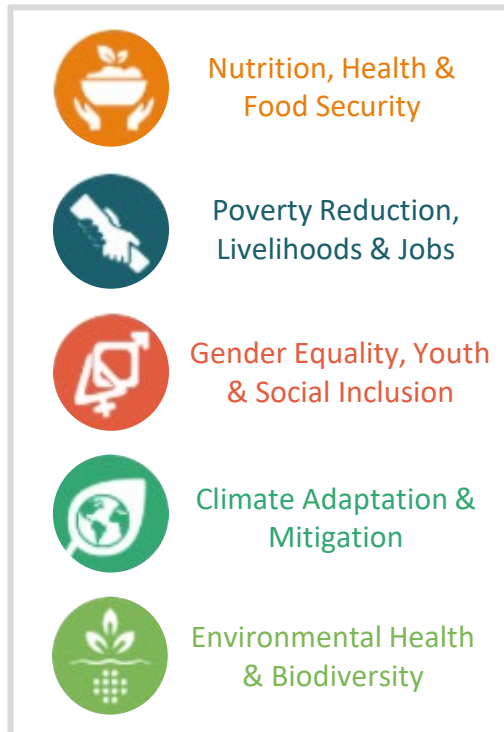
July 19, 2023

Schedule of 2023 Systems Transformation drop-in calls



Theme	Date	Time
Cross-cutting session (Foresight and National Policies and Strategies)	13-Apr	8am PST / 11am ET / 5pm Europe / 6pm East Africa
<i>Catch-up call for other time zones</i>	21-Apr	
Climate impact area (Climate Resilience and Low Emission Food Systems)	25-Apr	8am Manila / 10am Canberra / 7pm (Monday) Cali / 8pm (Monday) DC
<i>Catch-up call for other time zones</i>	3-May	
Environment impact area (NEXUS Gains and Agroecology)	24-May	8:30am UK / 9:30am Europe / 1pm Colombo / 5:30pm Canberra
<i>Catch-up call for other time zones</i>	1-Jun	
Poverty impact area (Digital Innovation and Rethinking Food Markets)	21-Jun	8am PST / 9am Mexico / 11am ET / 5pm Europe / 6pm Nairobi / 8:30pm New Delhi
<i>Catch-up call for other time zones</i>	29-Jun	9.30am CEST / 5:30pm AEST
Gender impact area (Gender Equality and Fragility, Conflict, and Migration)	19-Jul	8am PST / 9am Mexico / 11am ET / 5pm Europe / 6pm Nairobi / 8:30pm New Delhi
<i>Catch-up call for other time zones</i>	19/20-Jul	19-Jul 7pm Mexico / 9pm ET / 20-Jul 6:30am New Delhi / 11am Canberra
Nutrition impact area (Sustainable Healthy Diets and Fruits and Vegetables)	20-Jul	8am PST / 9am Mexico / 11am ET / 5pm Europe / 6pm Nairobi / 8:30pm New Delhi
<i>Catch-up call for other time zones</i>	20/21 Jul	20-Jul 7pm Mexico / 9pm ET / 21-Jul 6:30am New Delhi / 11am Canberra

Systems Transformation Initiatives relationships to the Impact Areas



Outline



1. Introduction and overview (Frank Place; 4 min)
2. HER+ Initiative overview (Els Lecoutere; 12 min)
3. Fragility, Conflict, and Migration Initiative overview (Katrina Kosec; 12 min)
4. Synergies between the two initiatives (Kate Ambler; 4 min)
5. Q&A (25 mins)
6. Close (Frank Place; 3 mins)



INITIATIVE ON
Gender Equality

Initiative on Gender Equality (HER+)

Harnessing Gender and Social Equality
for Resilience in Agrifood Systems

Update for CGIAR System Council

19 July 2023

Els Lecoutere (Lead), Daniel Gilligan (Co-lead), Steve Cole (WP1)
Ranjitha Puskur (WP2), Shalini Roy (WP3), Katrina Kosec (WP4)

Entry points for the Gender Equality Research Initiative

Motivation

Challenge

Gender inequalities will worsen in countries facing high risks from climate change

Opportunities

Food systems are transforming

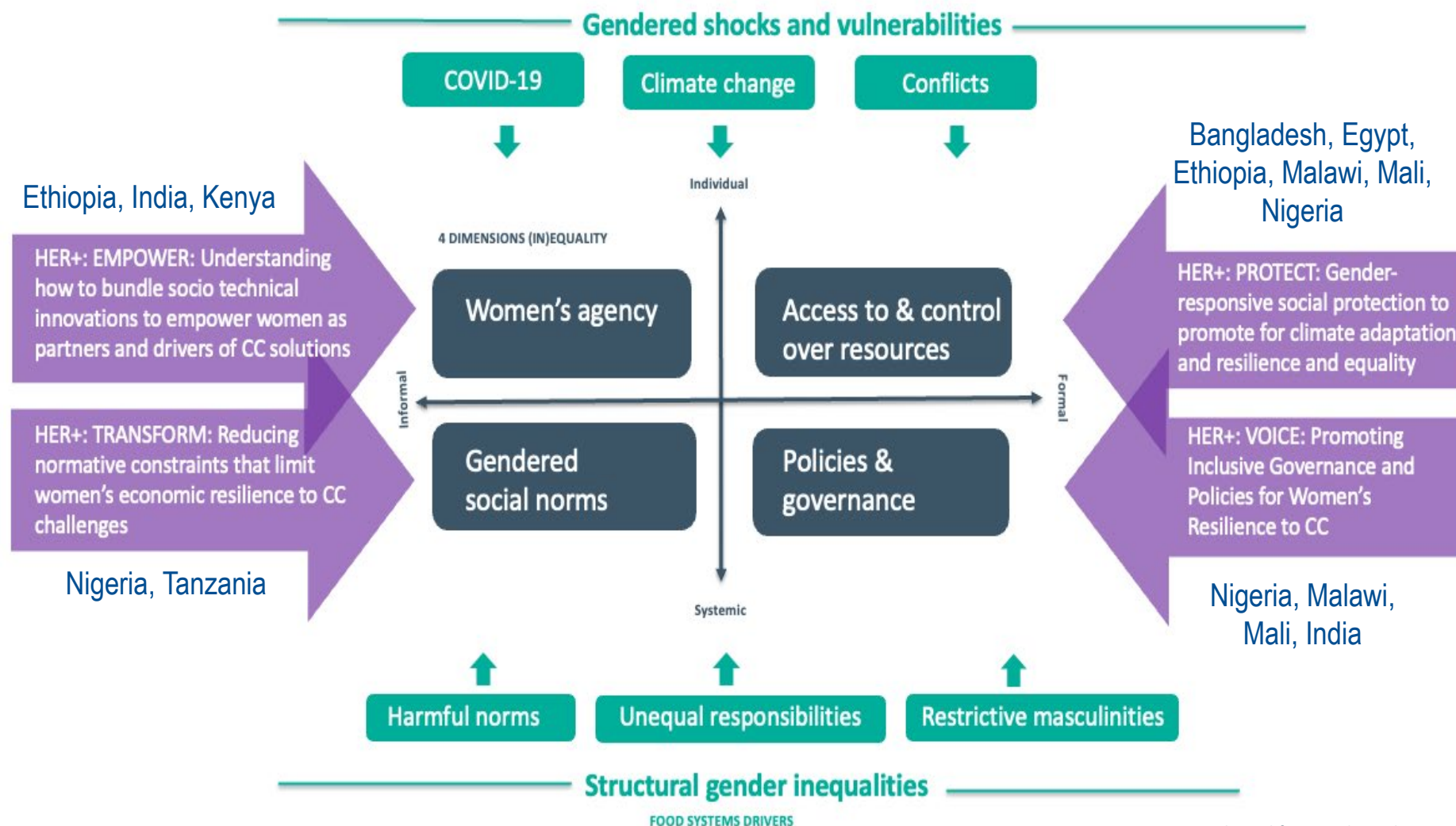
Space is opening for solutions on climate change

Objective

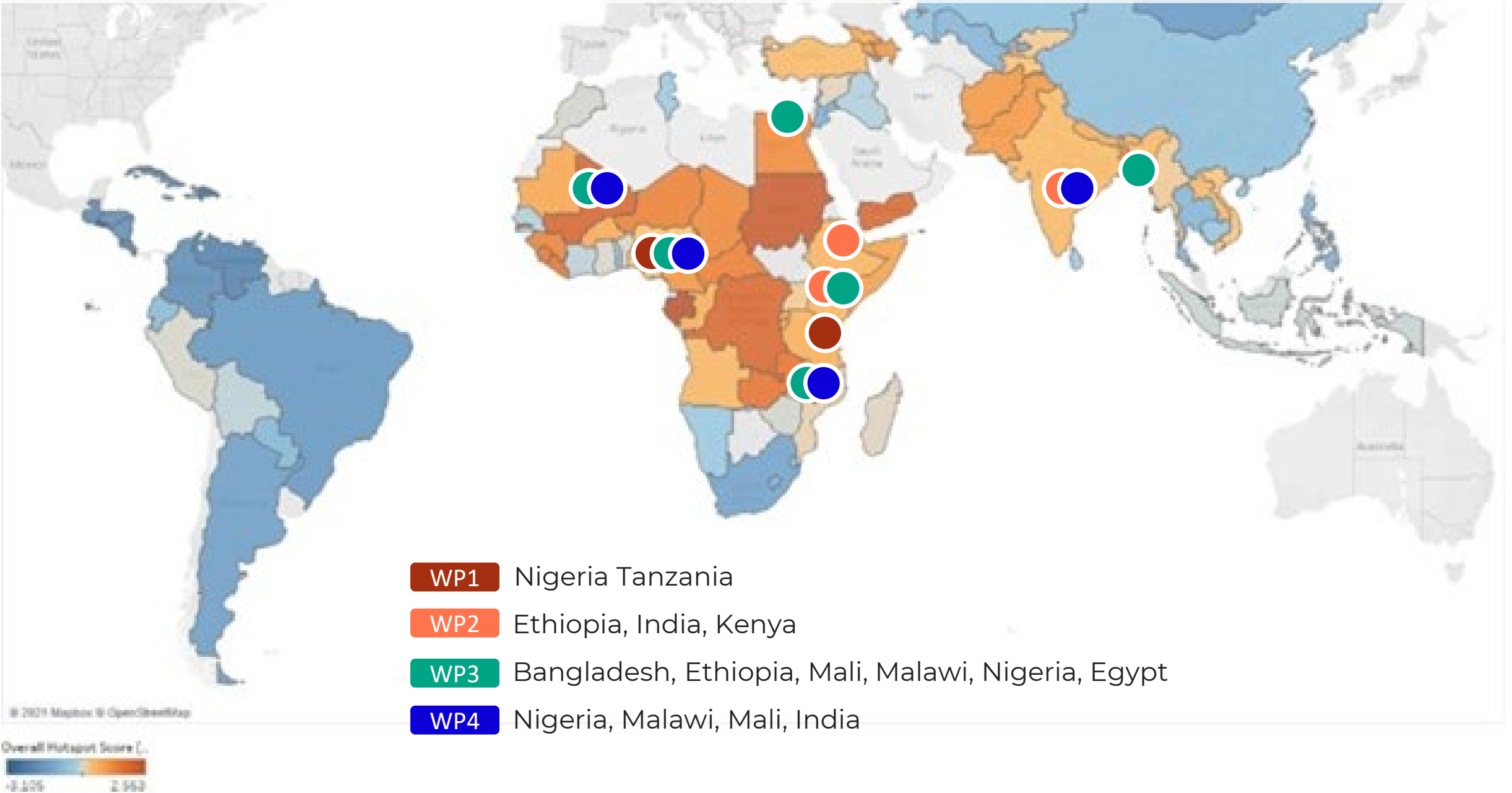
Stop and reverse growing inequalities

Country selection

Focus on hotspot countries where climate change is most likely to challenge gender equality



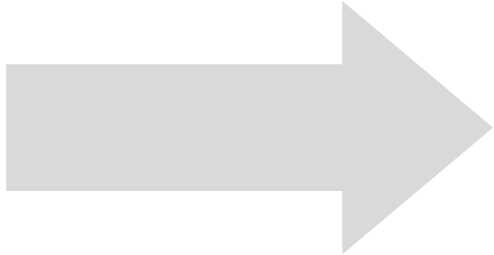
HER+ is working in gender inequality and climate risk hotspots



Progress towards End-of-Initiative Outcomes

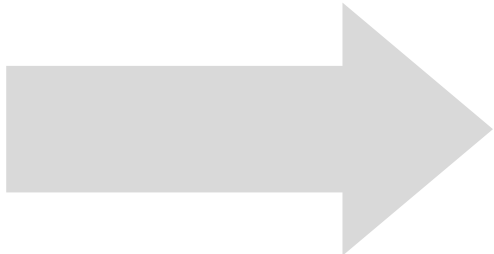
WP1 TRANSFORM

Target **normative constraints** that limit the capacities of women as food-system actors to build economic resilience to climate change challenges using **gender-transformative approaches**

- Global **evidence synthesis** of normative constraints in agri-food systems
 - **Qualitative assessments** of normative constraints in Nigeria and Tanzania
 - **Gendered social norms index**
 - **Guidelines** on how to measure gender transformative change
- 

WP2 EMPOWER

Identify and **model** diverse scenarios for **socio-technical innovation bundles (STIB)**, bundling climate-smart technologies to **empower** women to be partners and drivers of climate change solutions

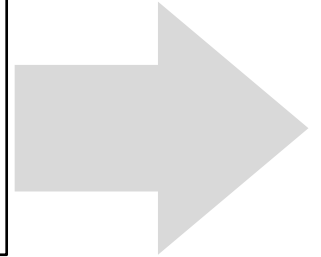
- **Innovation bundling framework** developed with IIED
 - **Evidence gap** mapping and databases on the STIBs completed with C4ED
 - **Partnerships** with international research centers, government, non-government, private sector agencies, professional networks established **for piloting STIBs in 11 learning labs** in Ethiopia, India, and Kenya
 - STIB **co-design workshops** (WorldVeg, ICAR-IVRI, LCSR)
- 

Progress towards End-of-Initiative Outcomes

WP3 PROTECT

Use HER+ **evidence to understand how social protection** systems can be better leveraged **to boost the climate resilience** of women and reduce gender inequality

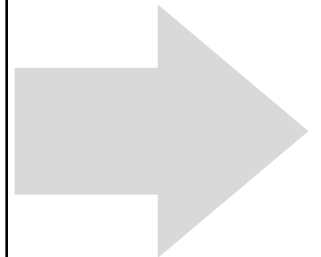
- Global evidence synthesized on **how social protection design can boost gendered resilience** and support **women as agents of change in climate adaptation**
- Quantitative/qualitative evidence co-generated with partners on **how different SP designs** affect **gendered coping and adaptation during climate shocks** in Ethiopia, Mali, Bangladesh
- **Governments, implementation partners, agencies, and local academics engaged** at events in Nairobi and Ethiopia on **lessons for SP design**



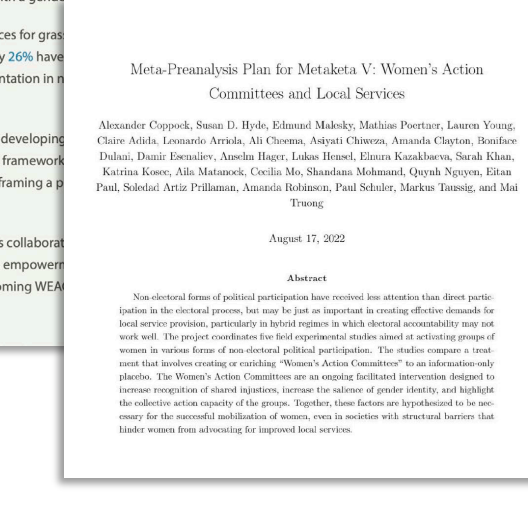
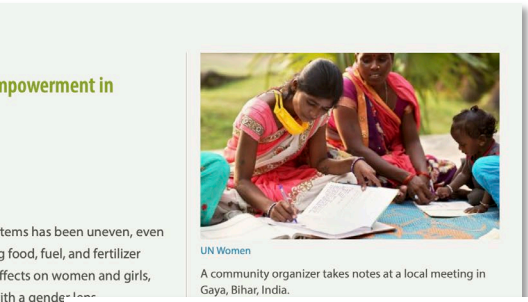
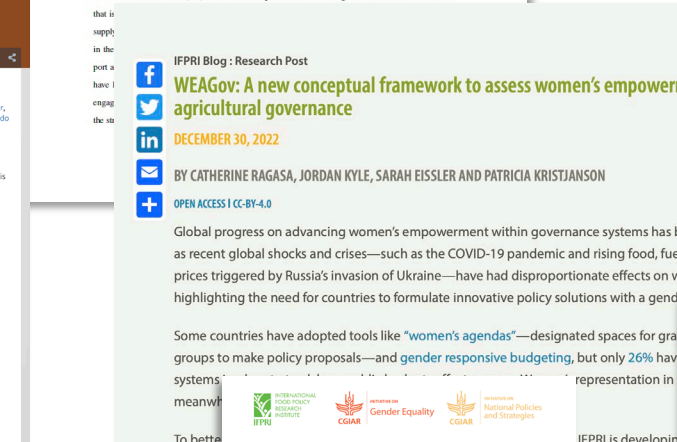
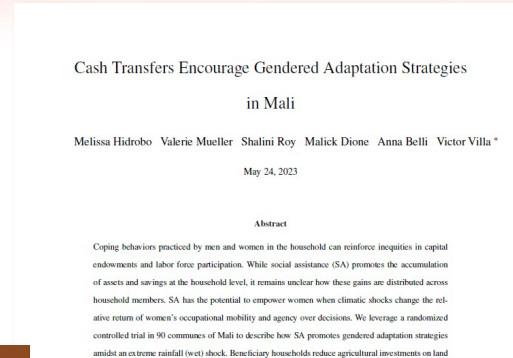
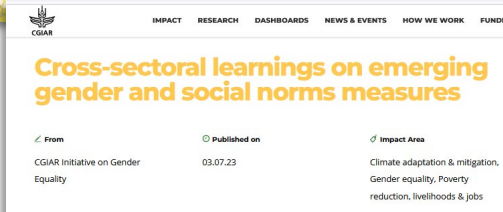
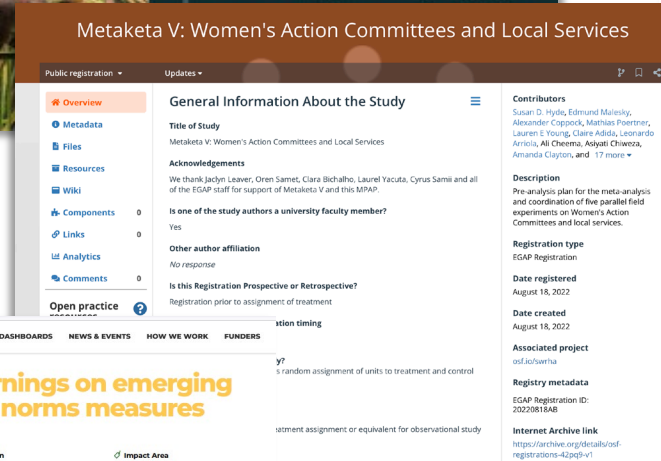
WP4 VOICE

Understand how social innovations, organizational strategies, and government and private-sector policies can effectively **increase the voice and agency** of women in agrifood system governance, and their resilience to climate change

- **ActionAid (Nigeria)** incorporated **civic education training** in women's empowerment programming with co-designed curriculum. Now being **testing** in 450 wards of Southwest Nigeria
- With **PRADAN (India)**, **design and test training on advocacy and role models** to increase women's voice and agency over selection of assets in MNREGA program
- Through engagement and research with **ISEAL members (India, global)**, members gained capacity to **integrate gender** in standards and programming



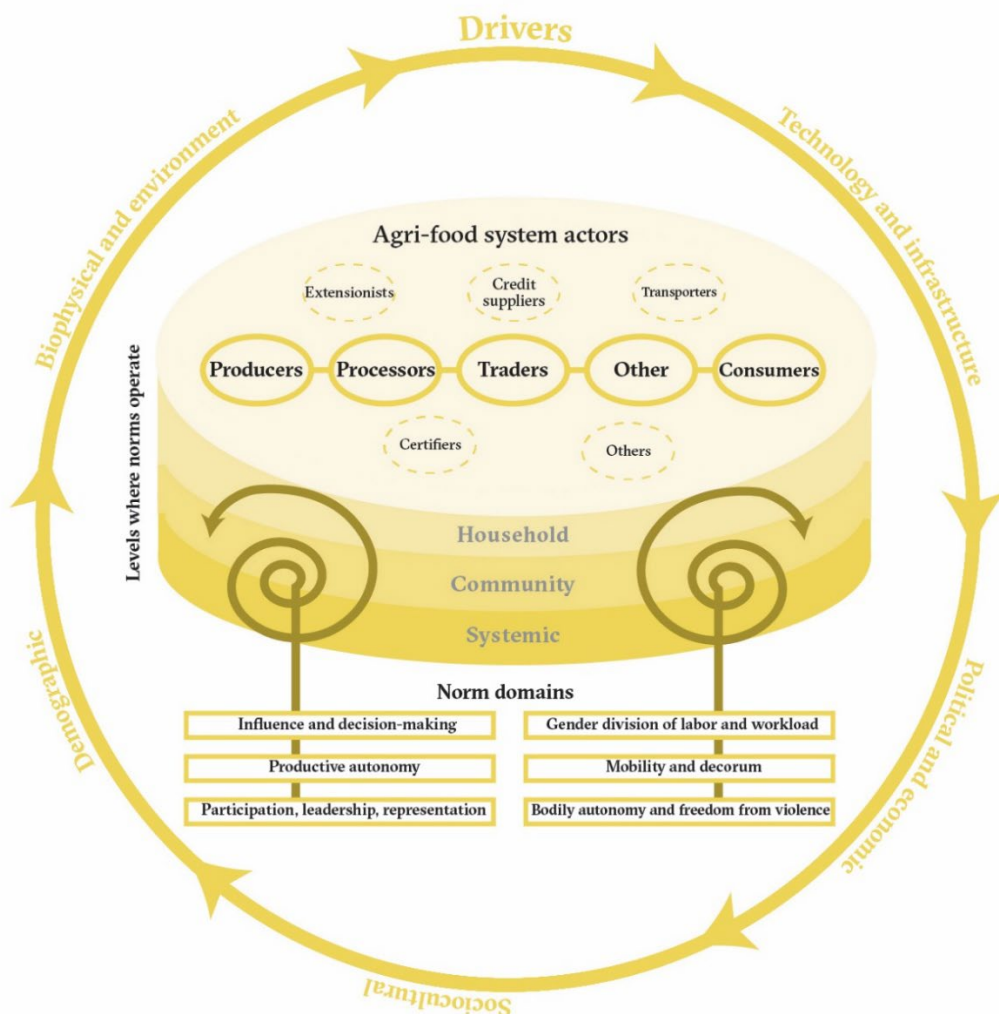
Key outputs and scientific contributions



WP1 TRANSFORM Research highlight

Three stages in targeting normative constraints for women to build economic resilience to climate change challenges

Social norms in agri-food systems



Conceptual framework on gendered social norms in AFS

- Literature review on normative constraints at different levels, nodes, and domains in agri-food systems (AFS)



Multi-dimensional gendered social norms in AFS index

- Multi-module survey tool for measuring gender/social norms across different levels, nodes, and domains in AFS



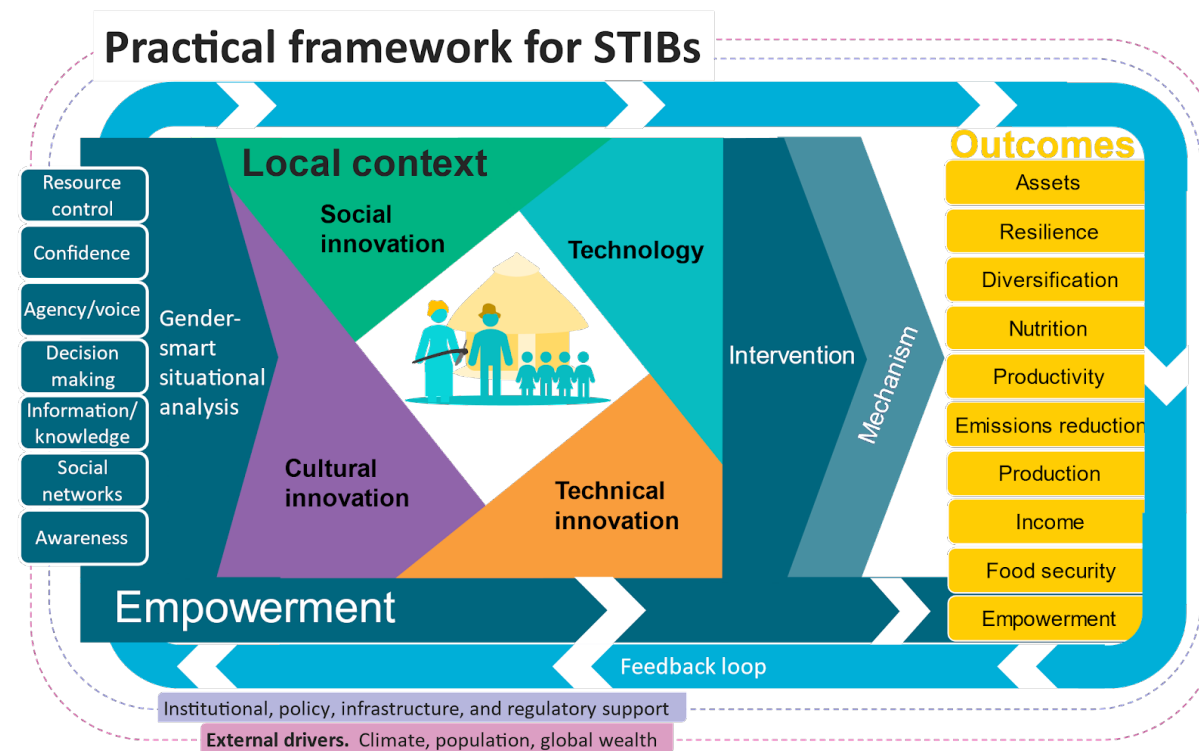
Pilot studies on gendered social norms in AFS in Nigeria and Tanzania

- To be carried out in 2023 in focal countries
- Results to help stakeholders identify leverage points and levers to intervene in AFS and build women's economic resilience to climate change

WP2 EMPOWER Research Highlights

Stakeholder consultation to inform socio-technical innovation bundling in Learning Labs across Africa and Asia

- Workshops with 30-40 stakeholders, conducted in Kenya, Ethiopia and West Bengal (India) during Jan-July
- Sharing experience** of working on different social and technical innovations
- Testing** the application of socio-technical innovation bundles (STIBs) to select context-specific interventions **building suitable STIBs** that generate **better outcomes and broader impacts**
- Workshop outputs feed into **implementation of Learning Labs** in different **agroecological and sociocultural contexts**
- A framework to **help select suitable STIBs**, leading to women's empowerment and resilience



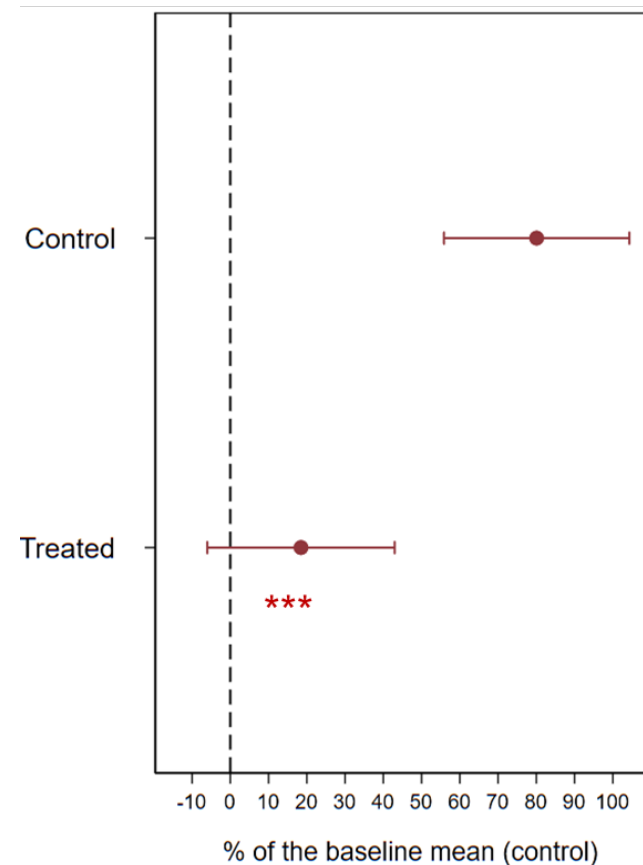
WP3 PROTECT Research highlight

Ethiopia case study: Does the SPIR program promote gendered resilience to droughts?

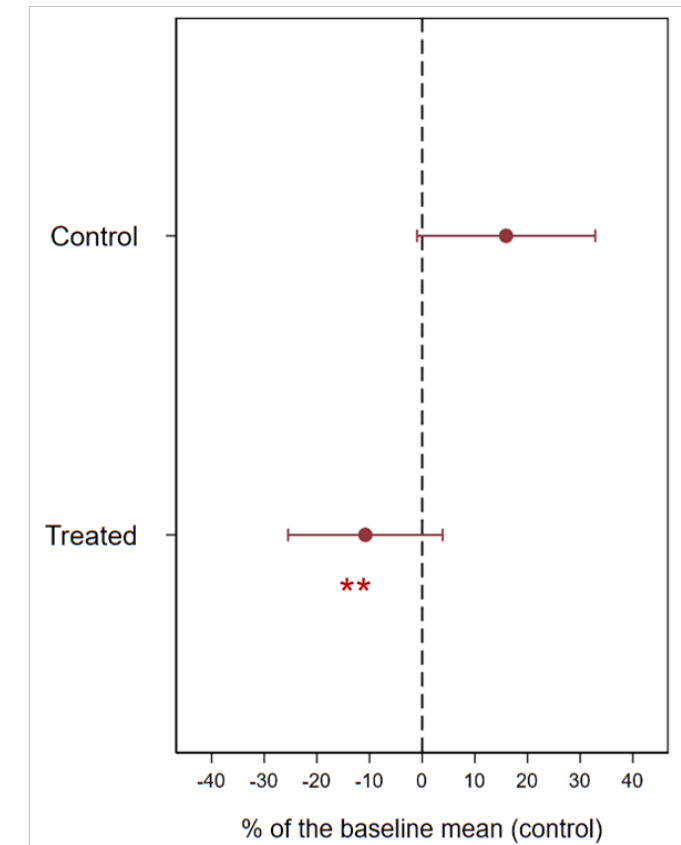
- SPIR is an **ultra-poor graduation program** built on the Government of Ethiopia's **SP public works** program
- WP3 research shows:
 - Droughts have substantial negative effects on assets, food security, nutrition, and intimate partner violence
 - The **SPIR program reduced the adverse impact of droughts** on these outcomes:
 - **food gap** and **livestock assets**
 - women's **dietary diversity** and **BMI**
 - women's experience of **sexual violence** and **emotional violence**

SPIR reduced intimate partner violence against women after drought

Sexual violence



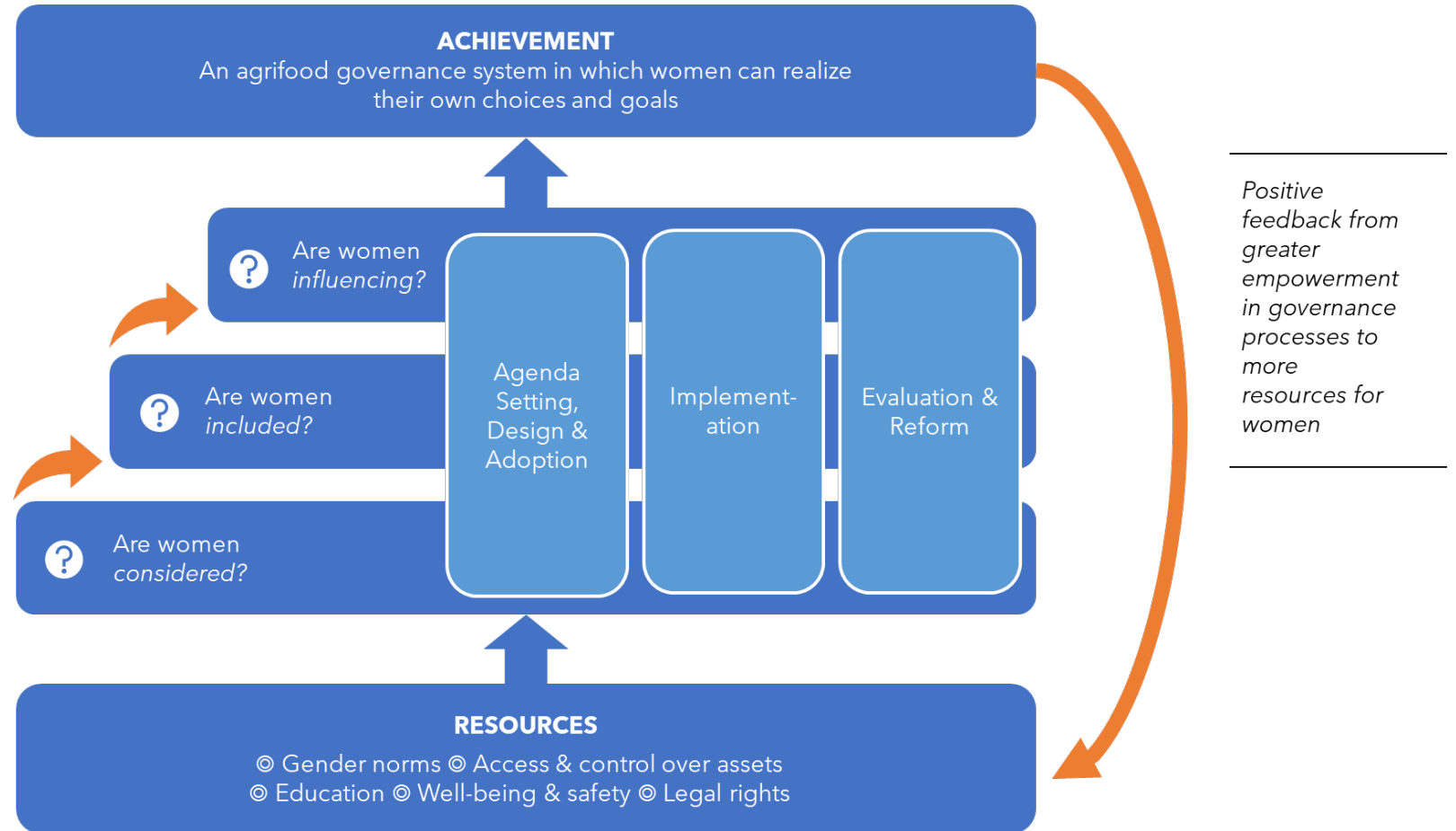
Emotional violence



WP4 VOICE Research highlights

Women's Empowerment in Agri-food System Governance (WEAGov) Assessment Tool

- Assessment tool that **tracks gender consideration** and women's voice and leadership **in agrifood policy processes**
- **Created in consultation with 38 key stakeholders**
- **Piloted in Nigeria** with Federal Ministry of Finance, Budget, and National Planning and Federal Ministry of Agriculture and Rural Development
- Perceived as **useful to policymakers** as a tool for expanding women's voice
- **Conceptual framework published**



Partners and Stakeholders

WP1

TRANSFORM

- Stakeholders in Nigeria, Tanzania
- KIT Royal Tropical Institute
- FHI360
- Joint Prog on GTA (FAO, WFP, IFAD)

WP2

EMPOWER

- C4ED
- IIED
- ICAR-Indian Veterinary Research Institute
- WorldVeg
- SNV
- KALRO
- Digital Green, Green Agro-solution PLC
- Center for Research on Innovation and Science Policy (CRISP)
- Sattva Consulting

WP3

PROTECT

- Govt of Bangladesh, Govt of Ethiopia, Govt of Mali
- WFP, UNICEF, FAO, USAID, World Bank
- World Vision, CARE, ORDA, Ethiopian Public Health Institute
- Wollega University, Addis Ababa University, Hawassa University

WP4

VOICE

- Nigeria Federal Ministries of Finance, Budget, and National Planning; Agriculture & Rural Development; Government of Odisha
- IFAD; Ethical Tea Partnership (ETP); SAN; IPOR; ActionAid Nigeria
- Smallholder farmers' associations
- Nassarawa State University; University of Abuja; University of Nigeria; University of Port Harcourt; University of Malawi

Coherence with other CGIAR Initiatives



Guidelines on how to **measure gender transformative change** (WP1)

Review of how **SP programs** can promote **gender-responsive climate adaptation**, (WP3)
Article on **synergies** of climate action with **SP, peace & security, and migration** programming with gender lens (WP3)

With **ActionAid** Nigeria on **trainings to increase women's voice**, agency, and resilience in community governance (WP4)

With **ISEAL**: Enhancing gender equality and women's voice and agency through **agrifood value chains** (WP4)

Gender Equality Initiative Transform – Empower – Protect – Voice



How SPIR program promotes **gendered resilience** of women and their households during **drought** in Ethiopia (WP3)



STIBs Learning Labs in Kenya, Ethiopia (WP2)
How **SPIR program** promotes **gendered resilience** during drought in Ethiopia (WP3)



STIBs Learning Labs in India (WP2)

Ukama Ustawi
STIBs Learning Labs in Kenya, Ethiopia (WP2)

CGIAR centers involved in HER+: Alliance Bioversity-CIAT, CIMMYT, CIP, ICARDA, IFPRI, IITA, ILRI, IRRI, IWMI, WorldFish

End of presentation of the Initiative on Gender Equality (HER+)

Thank you!



INITIATIVE ON
Gender Equality



INITIATIVE ON
Fragility, Conflict, and
Migration

CGIAR Initiative on Fragility, Conflict, and Migration (FCM)

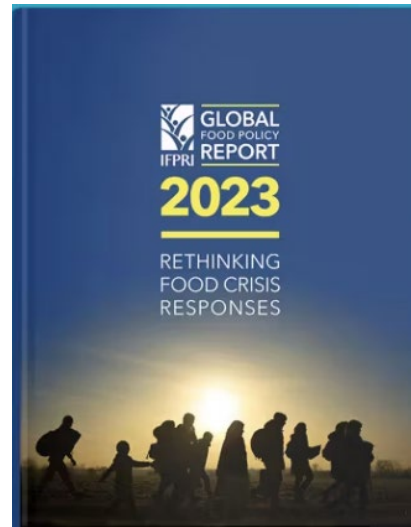
Update for the CGIAR System Council

19 July 2023

Katrina Kosec (Lead), Sandra Ruckstuhl (Co-lead & WP1 lead), Peter Laderach (Co-lead & WP2 lead), Kate Ambler (WP3 lead), Inga Jacobs-Mata (WP4 lead), and Kibrom Abay (WP5 lead)

A New CGIAR Research Initiative: Fragility, Conflict, and Migration (FCM)

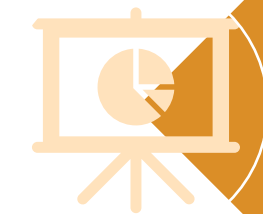
- IFPRI's 2023 Global Food Policy Report outlines existing evidence and needed research for effective crisis response
- The CGIAR Research Initiative on Fragility, Conflict, and Migration (FCM) takes up this research agenda, with partners



Build strong relationships
with partners in FCAS



Co-develop demand-
driven research

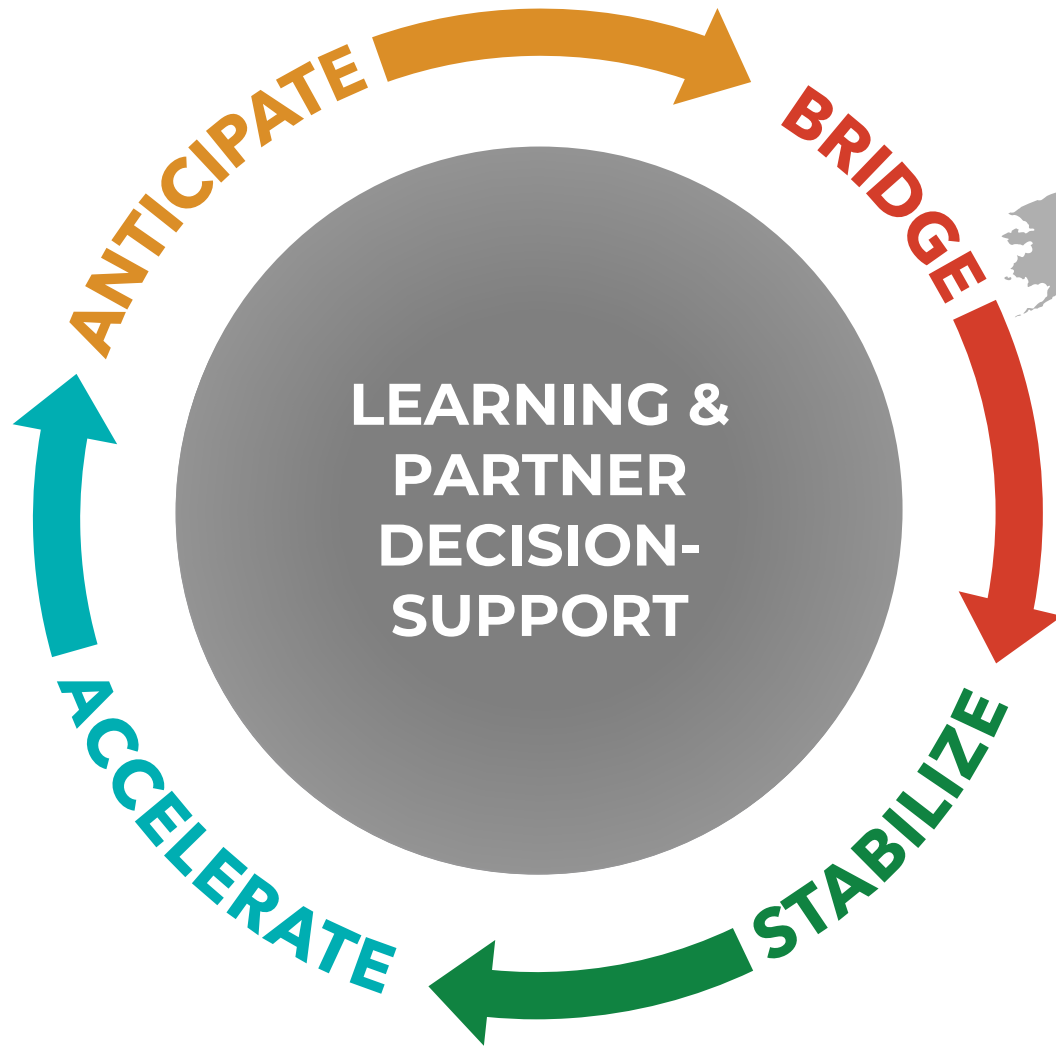


Support decision-making
for stakeholder policies
and programming

Fragility, Conflict, and Migration (FCM) Initiative Work Packages and Geographies



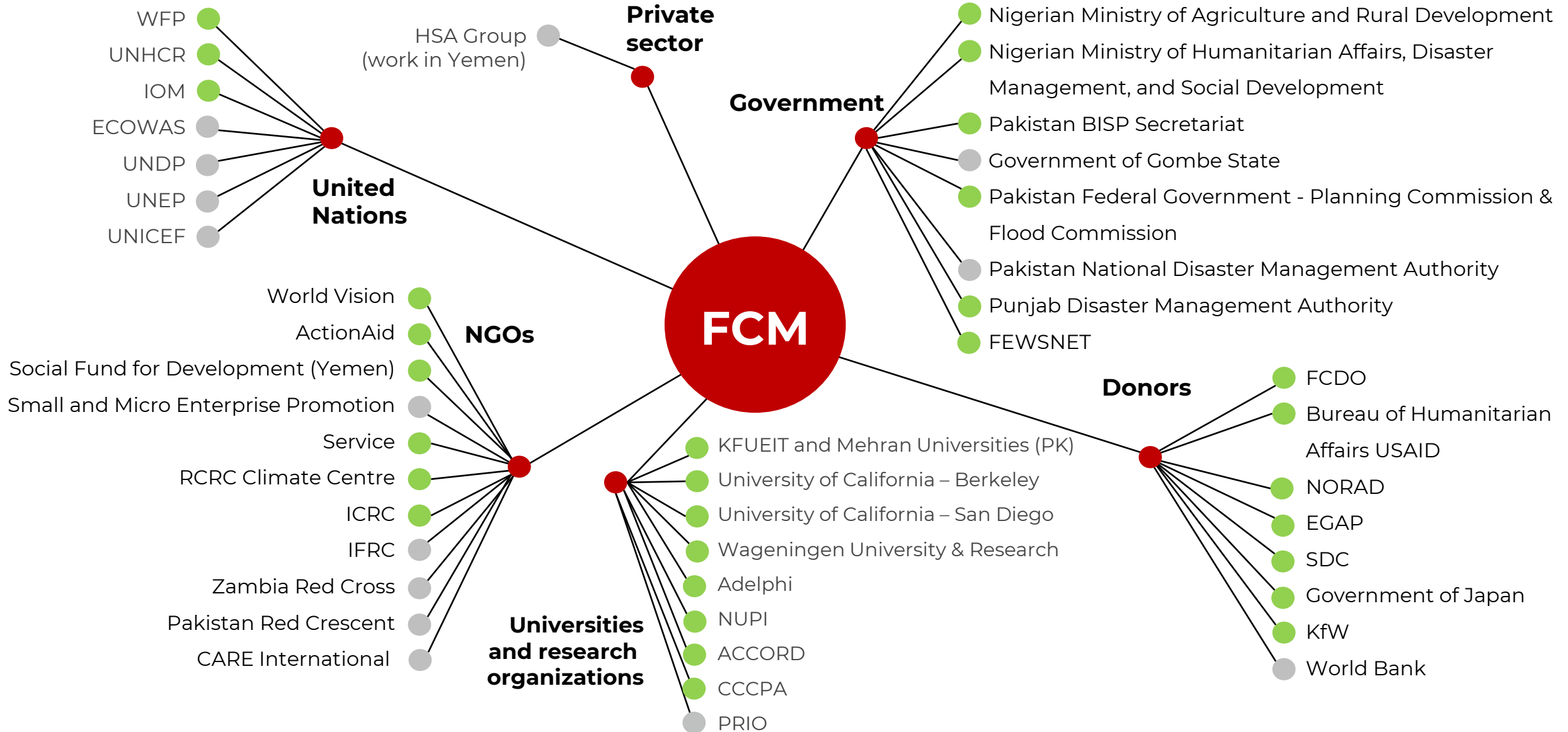
INITIATIVE ON
Fragility, Conflict, and
Migration



Where we work

Partner Engagement

● active collaborator
● Initial outreach



FCM Initiative Launches

- 5 events in 3 countries (Nigeria, Egypt, Jordan) during May – June 2023
- Multiple partners from the public and private sectors, guiding the FCM research agenda from the start



Scientific Contributions



INITIATIVE ON
Fragility, Conflict, and
Migration

Climatic Change (2023) 176:79
<https://doi.org/10.1007/s10584-023-03549-6>

REVIEW ARTICLE

Climate-related migration and the climate-security-migration nexus in the Central American Dry Corridor

Jona Huber^{1,2} · Ignacio Madurga-Lopez³ · Una Murray^{1,4} · Peter C. McKeown^{1,2} ·
Grazia Pacillo⁵ · Peter Laderach⁶ · Charles Spillane^{1,2}

Received: 5 October 2022 / Accepted: 8 May 2023 / Published online: 16 June 2023
© The Author(s) 2023



OPEN ACCESS | Research Article | 20 February 2023

Climate change, mobility and violent conflict: a typology of interlinked pathways

Authors: Adam Savelli , Frans Schapendonk , Tanaya Dutta Gupta , Grazia Pacillo , and Peter Läderach **AUTHORS INFO & AFFILIATIONS**

Publication: International Development Planning Review • <https://doi.org/10.3828/idpr.2023.2>



POLICY SEMINAR

Research Findings on Resilience & Social Cohesion in Burkina Faso and Niger

Co-organized by IFPRI, World Food Programme (WFP), Institute for Peace and Development (IPD), and the CGIAR Research Initiative on Fragility, Conflict, and Migration (FCM)

JUL 11, 2023 - 9:00 TO 10:30AM EDT

[Register](#)

POLICY SEMINAR

INTERNATIONAL FOOD POLICY RESEARCH INSTITUTE (IFPRI) | WFP | IPD | CGIAR RESEARCH INITIATIVE ON FRAGILITY, CONFLICT, AND MIGRATION (FCM)

Research Findings on Resilience & Social Cohesion in Burkina Faso and Niger

JUL 11, 2023 / 9:00 - 10:30AM EDT



ARTICLE | Open Access |

Does Relative Deprivation Condition the Effects of Social Protection Programs on Political Support? Experimental Evidence from Pakistan

Katrina Kosec, Cecilia Hyunjung Mo

First published: 19 January 2023 | <https://doi.org/10.1111/ajps.12767> | Citations: 1

DISCUSSION PAPER

When will civil society sanction the state? Evidence from Mali

BY JAIMIE BLECK, JESSICA GOTTLIEB AND KATRINA KOSEC

IFPRI DISCUSSION PAPER | 2023 | PAGES: 57

DOI : <https://doi.org/10.2499/p15738coll2.136571>

OPEN ACCESS

JOURNAL ARTICLE

Cash Transfers, Trust, and Inter-household Transfers: Experimental Evidence from Tanzania



David K Evans , Katrina Kosec

The World Bank Economic Review, Volume 37, Issue 2, May 2023, Pages 221–234,
<https://doi.org/10.1093/wber/lhac030>

Published: 24 January 2023

FCM End of Initiative Outcomes



INITIATIVE ON
Fragility, Conflict, and
Migration

ANTICIPATE

- Research contributes to more conflict-sensitive anticipatory action approaches to prepare for & mitigate compound crises in 3 countries

BRIDGE

- 3 partners utilize initiative's assessment tools & recommendations to inform programming

STABILIZE

- 3 countries implement new programming or strengthen gender- and conflict-sensitivity dimensions of existing programming to improve livelihoods, food

ACCELERATE

- Local innovators in target countries design and deploy CG innovations focusing on HDP, contributing to accelerated market development in fragile and conflict-affected

LEARNING AND PARTNER DECISION-SUPPORT



Supporting anticipatory action (AA) in fragile settings to prepare for and mitigate compound crises

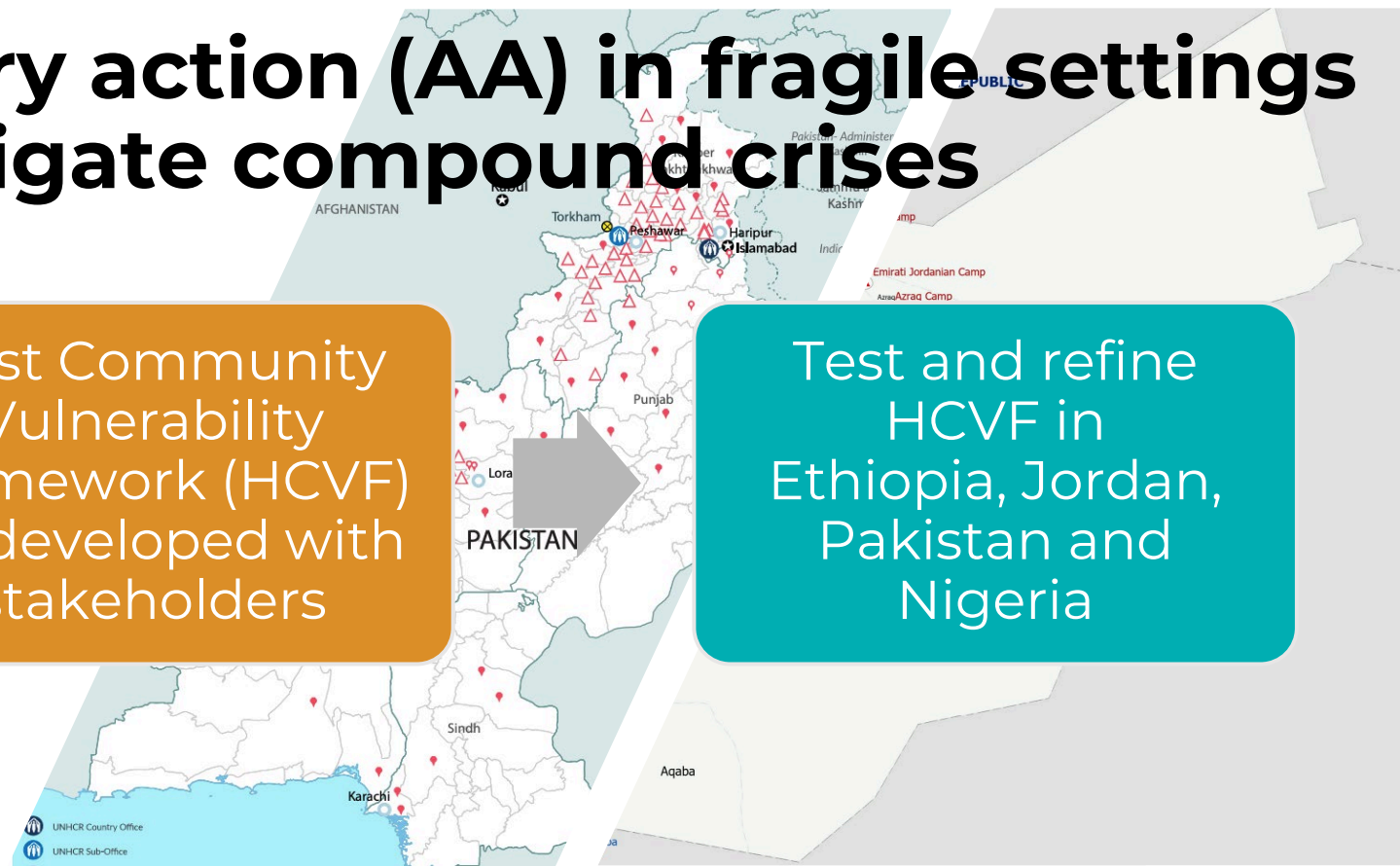
Global literature review & consultations



Host Community Vulnerability Framework (HCVF) co-developed with stakeholders



Test and refine HCVF in Ethiopia, Jordan, Pakistan and Nigeria



Climate Security Observatory (CSO): actionable knowledge to avoid climate-driven insecurity



INITIATIVE ON
Fragility, Conflict, and
Migration

Lead Questions



Who are vulnerable groups to climate and security risks that should be targeted?



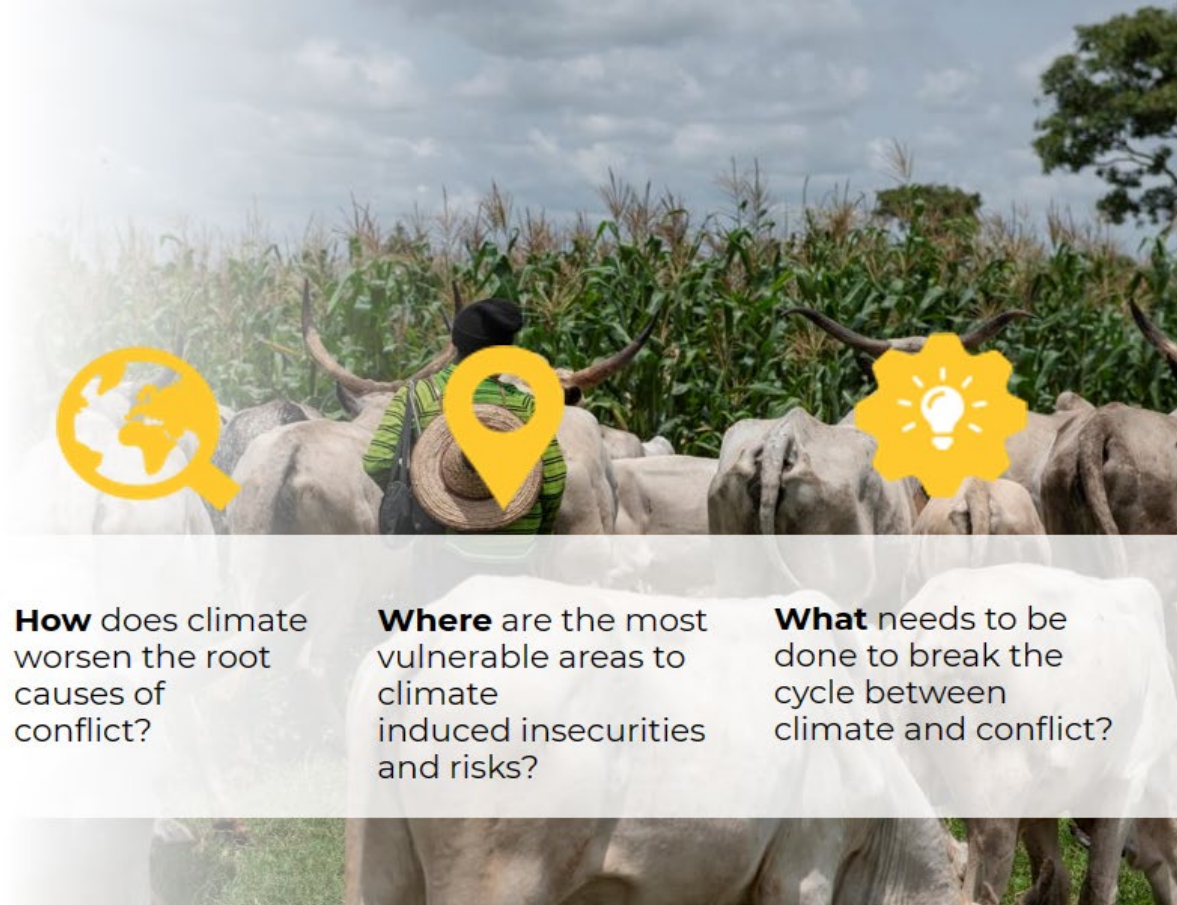
How does climate worsen the root causes of conflict?



Where are the most vulnerable areas to climate induced insecurities and risks?



What needs to be done to break the cycle between climate and conflict?



Supporting programming to build stable livelihoods in fragile settings



INITIATIVE ON
Fragility, Conflict, and
Migration

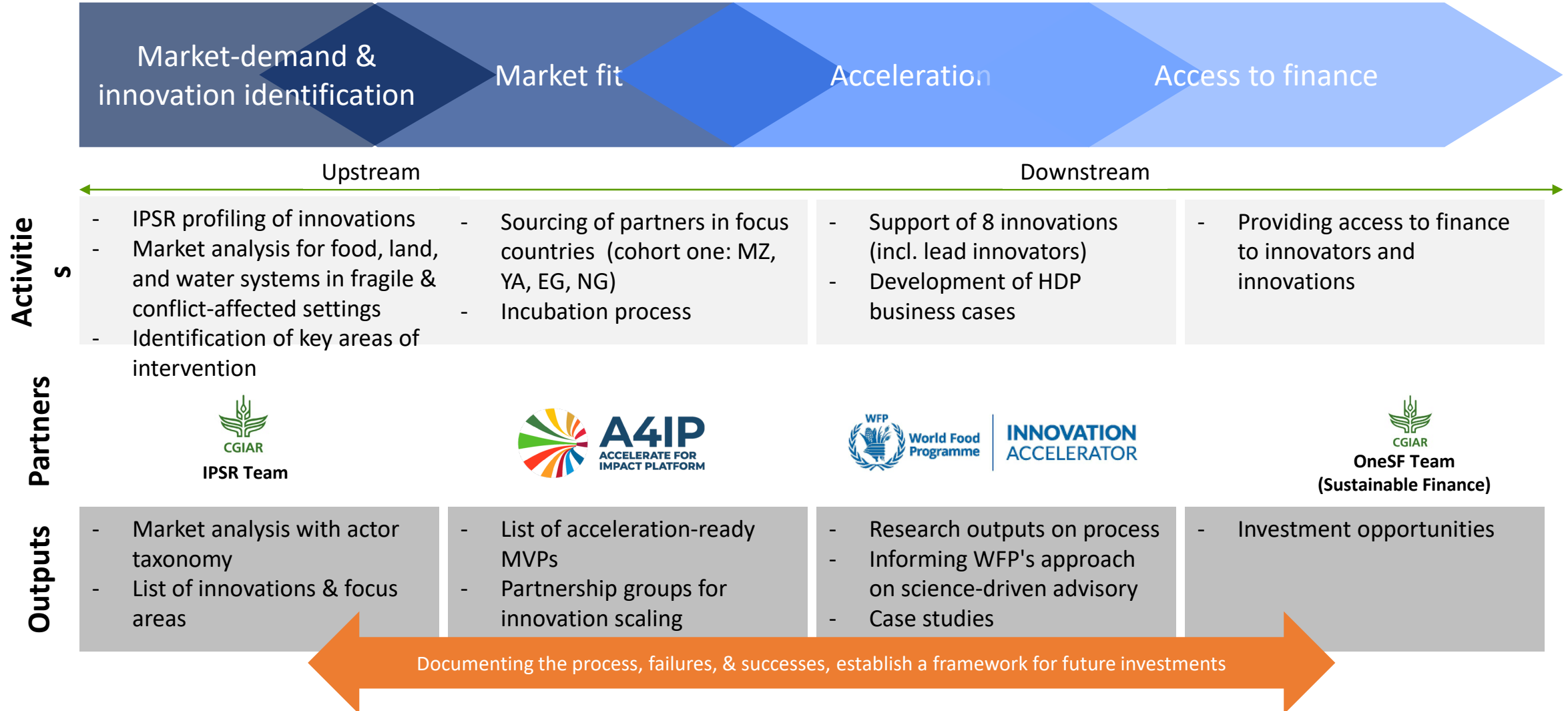
- 1 Identify countries
- 2 Build partnerships
- 3 Evaluate programs
- 4 Disseminate and scale

- Ethiopia
- Nigeria
- Somalia

- World Vision
- FCDO, HarvestPlus, Value Seeds
- World Vision, ACTED, and Delta

- Cash transfers and mental health services
- Bio fortified seed bundles for IDPs
- Graduation programming for IDPs

Accelerating food, land, and water system innovators in fragile and conflict-affected settings to scale innovations and catalyze investments



Learning and Partner Decision-Support

Demand-driven and co-created together with WFP, organized across the following four activities:

Strategic support to WFP program design

- A strategic review and analysis of anticipatory action initiatives

Complementary analysis and development of knowledge products

- Country-specific resilience and climate analysis

Evidence on the impact of WFP programs through impact evaluations

- Conduct impact evaluations that address high priority evidence gaps for WFP

Technical and scientific capacity sharing and knowledge exchanges

- Rapid-response technical assistance through technical backstopping, dialogues, exchanges and visits



Photo credit: Photographer/Agency

Coherence with other CGIAR Activities



INITIATIVE ON
Fragility, Conflict, and
Migration

FCM is working closely with other CGIAR initiatives, including with:

- The Gender Equality initiative, to support improved and gender-responsive social protection
- The Climate Resilience initiative, to incorporate fragility, conflict and migration components into the AWARE anticipatory action platform, beginning first in Zambia
- UU and F2R-CWANA to support efforts to accelerate dissemination of interventions in fragile settings
- NPS on research to inform rehabilitation and rebuilding in conflict-affected communities



Photo from FCM-NPS CGIAR initiatives co-convened workshop with partners – Abuja, Nigeria, 12 May 2023

End of presentation of the Initiative on Fragility, Conflict, and Migration (FCM) Thank you



INITIATIVE ON
Fragility, Conflict, and
Migration



INITIATIVE ON
Gender Equality



INITIATIVE ON
Fragility, Conflict, and
Migration

Synergies between HER+ and FCM

Update for the CGIAR System Council

19 July 2023



Photo: Sylyvann Borei/WorldFish

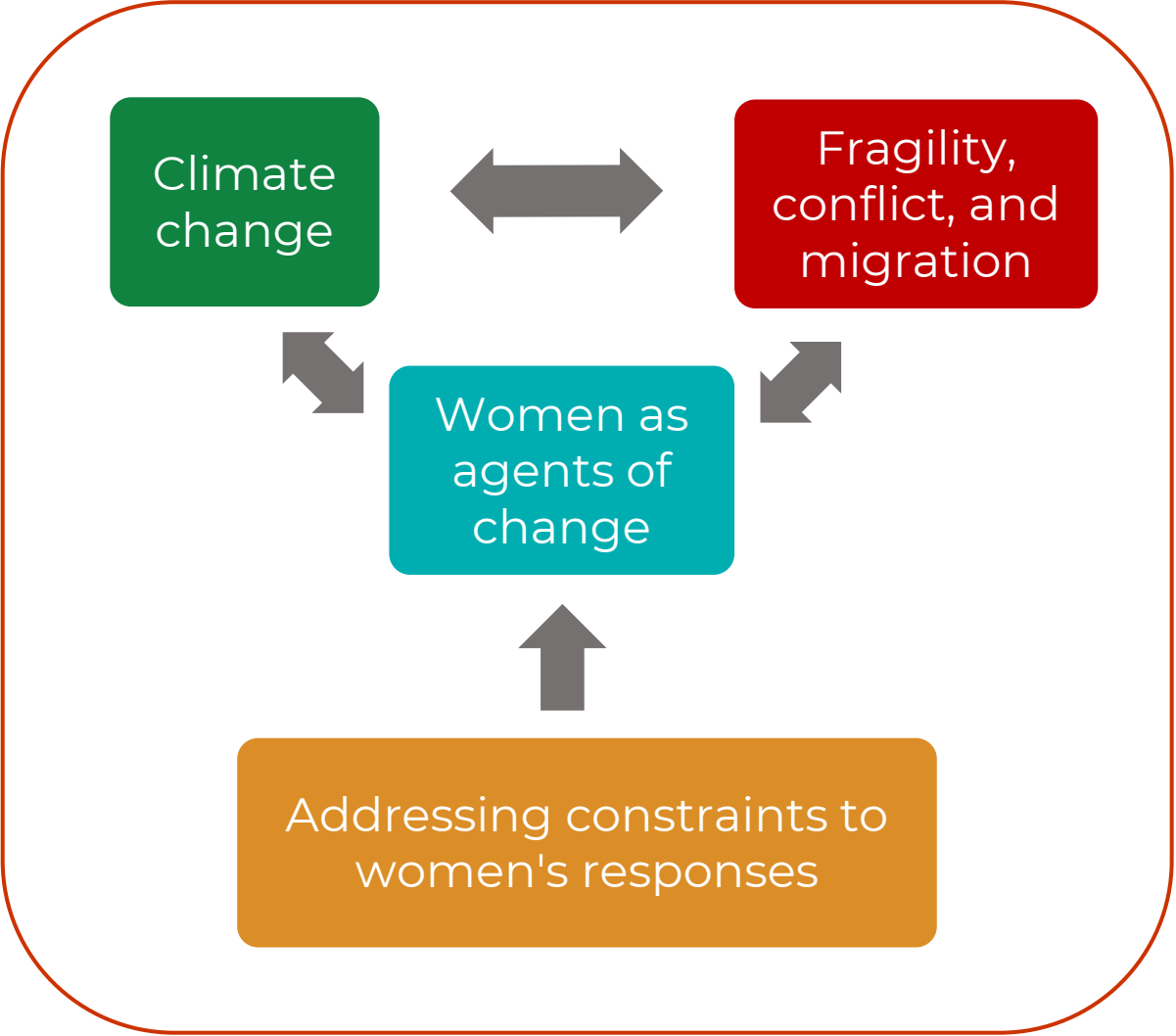


INITIATIVE ON
Fragility, Conflict, and
Migration



INITIATIVE ON
Gender Equality

Synergies



Examples of synergies in addressing women's constraints

Increasing resource control

Promoting women's participation in sustainable land management practices in Ethiopia, by adding training and inputs to social protection



Increasing agency

Training women and men to increase women's voice and agency in local governance in Nigeria



End of presentation on synergies between HER+ and FCM

Thank you



INITIATIVE ON
Fragility, Conflict, and
Migration



INITIATIVE ON
Gender Equality