



# **FABLE: A decentralized approach to model national and global food and land use systems**

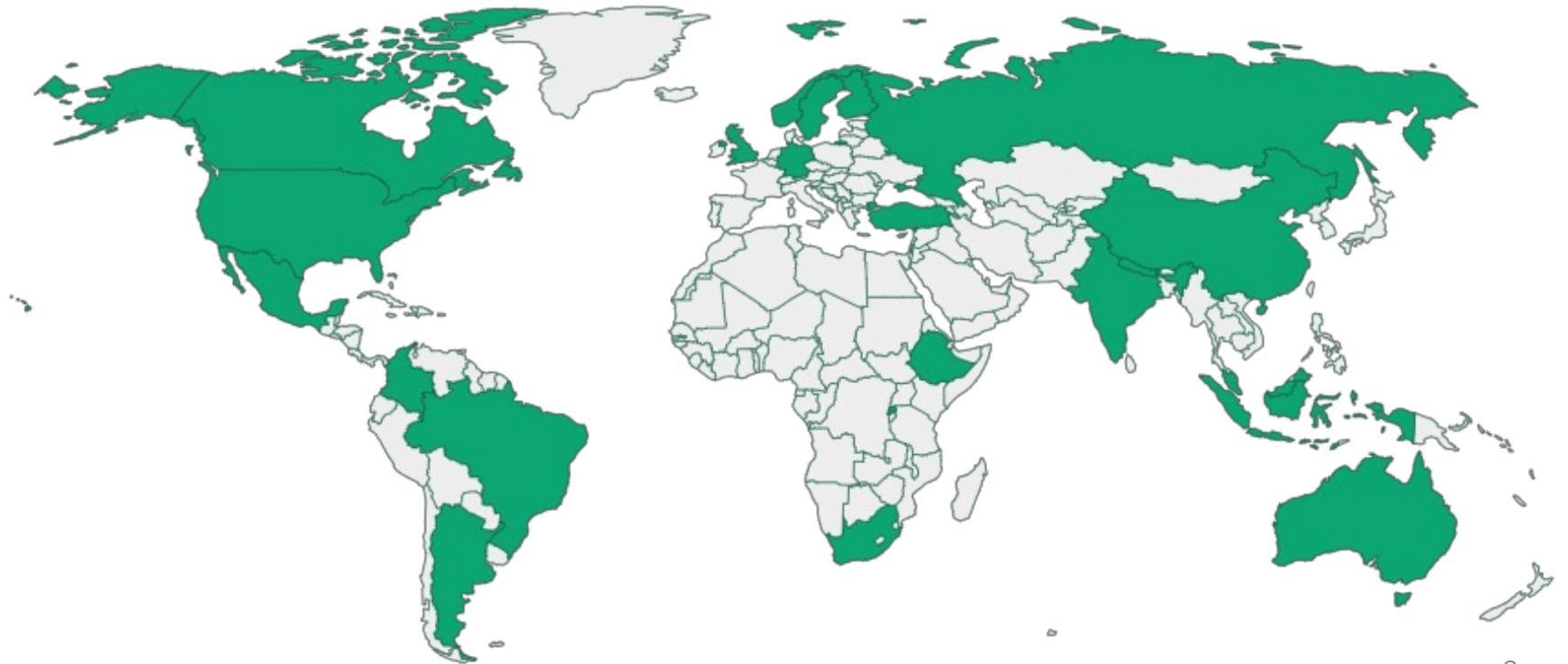
June 29, 2023

# The FABLE Consortium

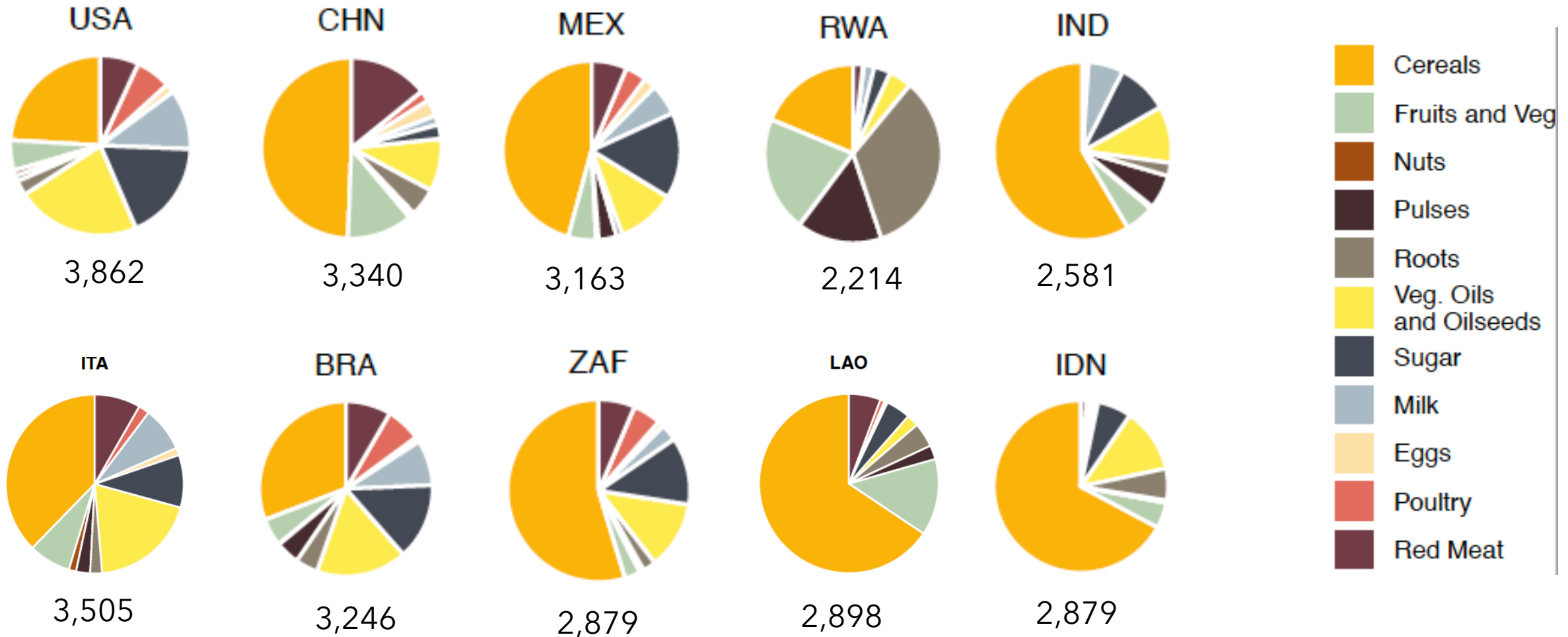
Since 2017, FABLE supports and mobilises researchers based in national knowledge institutes from all continents to develop decision-support tools to increase food and land-use systems' sustainability.

## 23 countries represented

**(Greece  
joined in  
June 2023)**

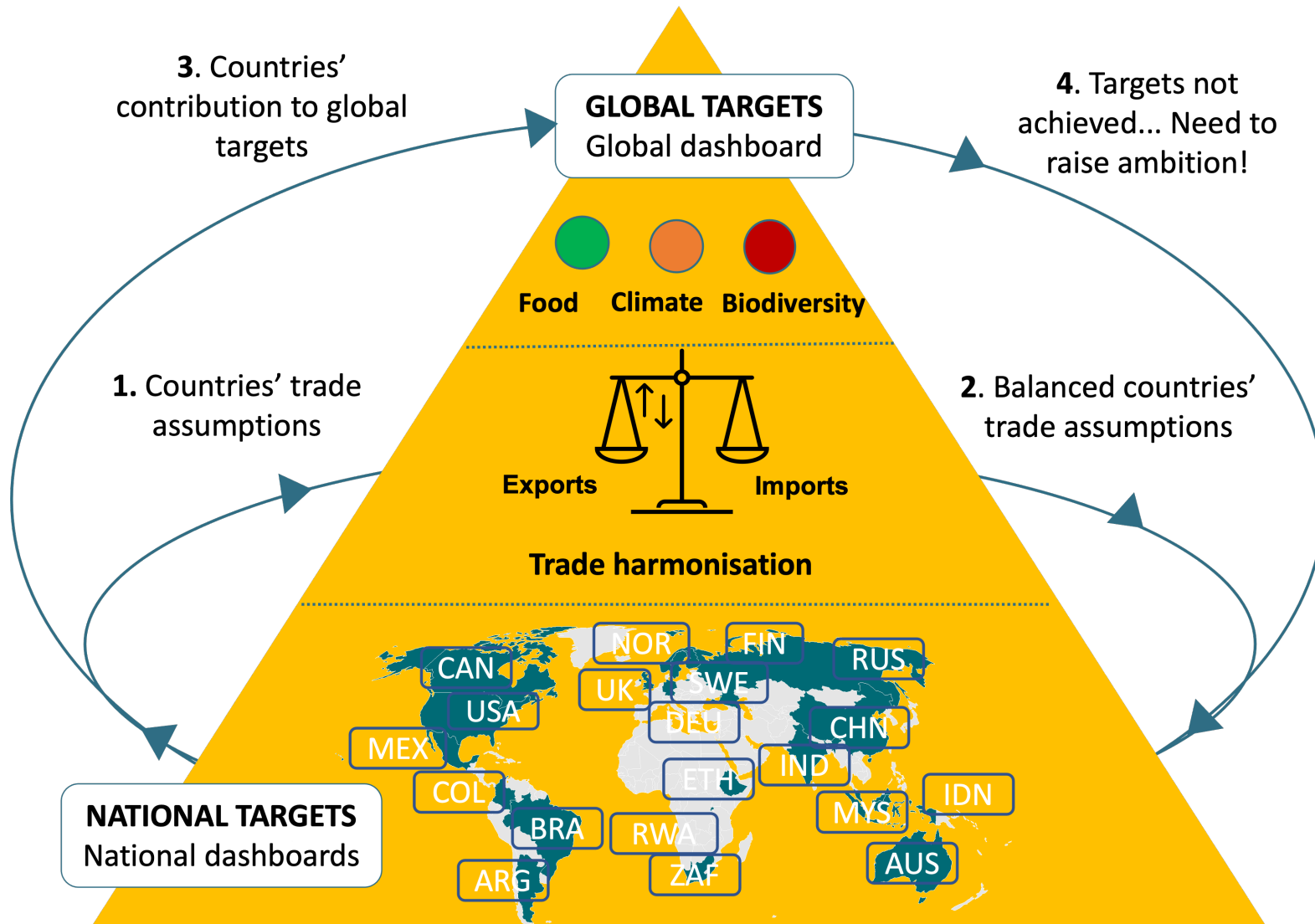


# There is a large diversity of agri-food systems in the world



**Source: FAO 2015**

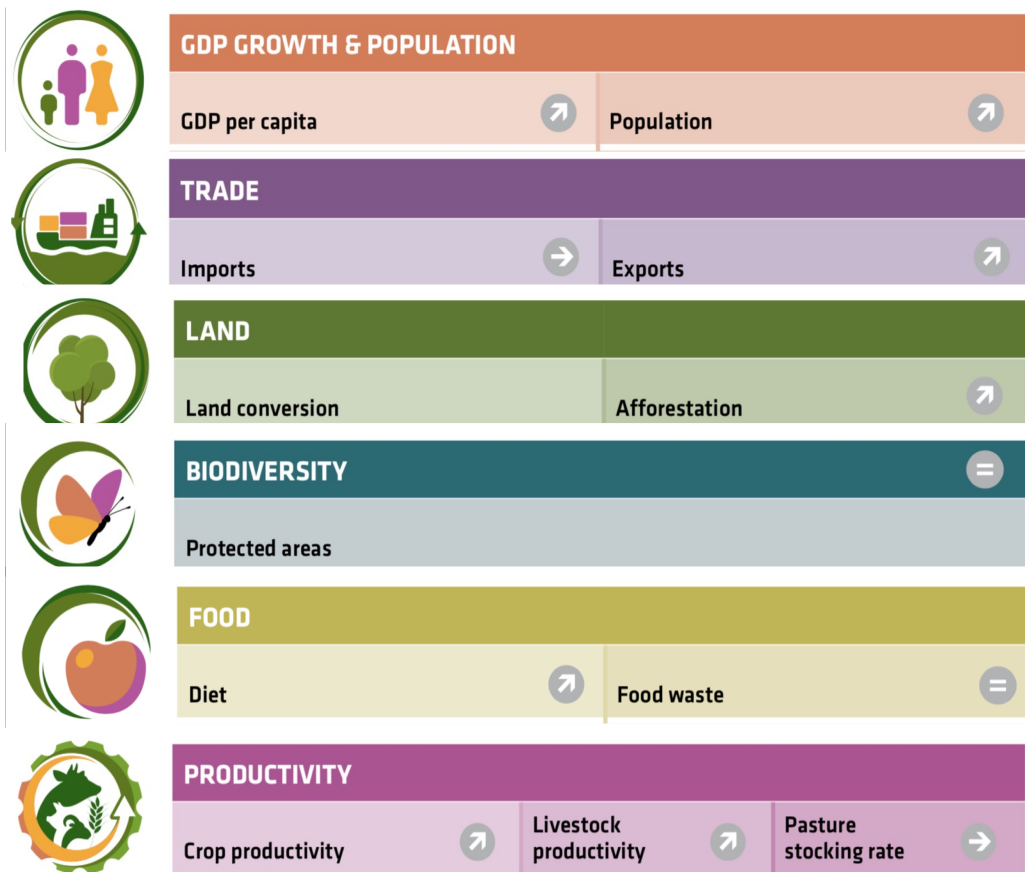
# Scenathon: an iterative approach to integrate national and global scales



- Empowers people who live in heterogenous contexts to design the future they want
- Shows the interconnectedness of national food and land systems and the need for collaboration to converge local and global priorities

# Scenathon 2023

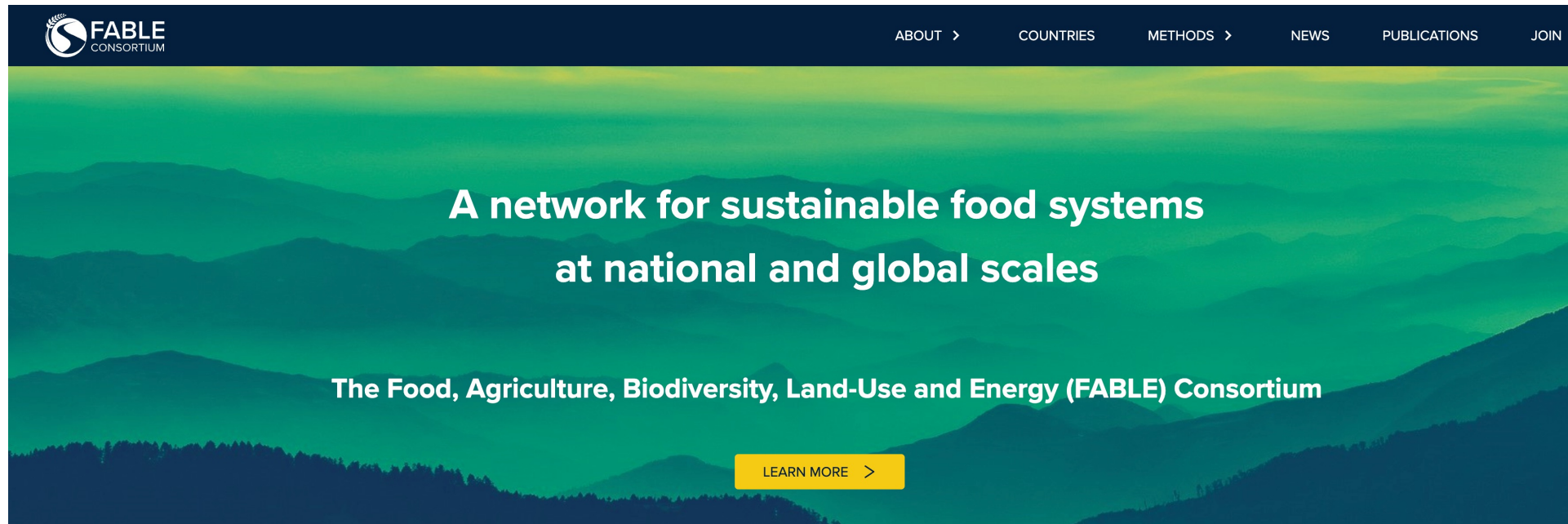
What are the main levers for transformation in each country?



3 alternative pathways:



# Thank you!



**[fableconsortium.org](https://fableconsortium.org)**  
**[info.fable@unsdsn.org](mailto:info.fable@unsdsn.org)**

