

Women in Water Diplomacy Network

Experience exchange event: “Engendering the water, energy, food, and ecosystems (WEFE) nexus approach to sustainable development”

Wednesday 31 July, 2024 | 14:30–16:30 CET | Online

https://us02web.zoom.us/meeting/register/tZEtc-yqpzlsE9y_MwsrzfRxdxQgnm8O0y5n

(registration required in advance)

The greater the climate change impacts on food and water security, livelihoods, and the environment, the greater our need to work together across disciplines to tackle our shared challenges in a holistic way. The water–energy–food–ecosystems (WEFE) nexus approach is a multi-disciplinary perspective for addressing complex resource and development challenges that underpin the Sustainable Development Goals (SDGs). This approach offers a holistic and integrated framework for managing resources in the face of a pluri-dimensional crisis (climate, biodiversity, conflict, degradation, etc.) which has profound impacts on water, energy, and food resources.

The WEFE nexus approach recognizes the interconnectedness of water, energy, food, and ecosystems, emphasizing the need for sustainable and integrated management of these resources and their governance. However, it is not always easy to identify entry points for practical implementation of this approach. Moreover, the full integration of the intersections among WEFE sectors and efforts to improve gender equality, and inclusivity more broadly, requires further development.

The Women in Water Diplomacy Network, the Stockholm International Water Institute (SIWI), and the Environmental Law Institute (ELI), in collaboration with the Alliance of Bioversity International and CIAT through the CGIAR Initiative on NEXUS Gains, are co-convening this online experience sharing workshop to highlight the efforts of researchers and academicians related to WEFE nexus issues, and shine a light on the experiences of women diplomats in the WEFE sectors. Further, the event aims to explore the dynamic context where water diplomacy, entrepreneurship, research, and innovation can merge to catalyze sustainable development.

The objectives of this event are to:

- Identify key entry points or opportunities where the WEFE nexus approach can be integrated into water diplomacy processes
- Highlight good practices for incorporating gender perspectives in WEFE nexus initiatives based on case studies from the Blue Nile and the Aral Sea Basin
- Identify barriers to and opportunities for integrating gender equality objectives and approaches into the WEFE framework




The expected outcomes of the event are:

- Enhanced interdisciplinary understanding of the WEFE nexus framework
- Strengthened capacity for gender-responsive/transformational WEFE nexus initiatives

Participation at this online experience exchange is open to our Women in Water Diplomacy Network communities, supporters, and partners as well as the CGIAR Initiative on NEXUS Gains. **Pre-registration is required and a confirmation email containing information about joining the meeting will be sent.**

Program

Time zones in the below program are in Central European Time (CET)

TIME (CET)	31 July, 2024
14:15 – 14:40	Virtual coffee break and technical check-in: <i>Before the workshop officially starts, the online meeting space will be opened for informal check-ins. Please join us early to check your connections and ensure a seamless start!</i> 
14:40 – 14:50	Ignite speech: Claudia Ringler , Co-lead of NEXUS Gains Initiative and Director, Natural Resources & Resilience, International Food Policy Research Institute (IFPRI)
14:50 – 15:40	Experience exchange Facilitated by Yodit Balcha , Climate Adaptation Research Officer, Alliance of Bioversity International and CIAT – Africa Hub  Invited experience sharing: Applications for the WEFE framework in water diplomacy processes? What is the role of gender in the WEFE nexus approach? Good practices of WEFE nexus approach <ul style="list-style-type: none"> - Farwa Aamer, Director, South Asia Initiatives at the Asia Society Policy Institute - Marlène Elias, Director, Gender and Inclusion, Alliance of Bioversity International and CIAT - Tumaini Mwamyalla, Tanzania’s National Desk Officer for the Nile Basin Initiative (NBI) - Nompumelelo Ntshalintshali, WASH, climate change, gender expert
15:40 – 16:20	Open discussion – All session participants are welcome to join in! Facilitated by Julienne Ndjiki , Program Officer, SIWI
16:20 – 16:30	Wrap up, group screenshot/picture and exit poll Elizabeth A. Koch , Senior Manager, Environmental Law Institute 

Resources for ongoing learning

- [Position Paper on Water, Energy, Food and Ecosystem \(WEFE\) Nexus and Sustainable Development Goals \(SDGs\)](#)
- [Developing meaningful water-energy-food-environment \(WEFE\) nexus indicators with stakeholders: An Upper White Nile case study](#)
- [Invisible women: barriers for women professionals in the water, energy, food, and environment sectors in Nepal](#)
- [WEFE Leadership Course nurtures transformational female leadership in Nepal](#)

Speakers – short biographies *(in alphabetical order by first name)*

Claudia Ringler is the Unit Director for Natural Resources and Resilience in the Transformation Strategies Department at the International Food Policy Research Institute. She coordinates research at the intersection of nature, agriculture, and development for tangible progress toward more equitable and resilient food systems. As Co-lead of the CGIAR Initiative on NEXUS Gains, she drives research on the role of energy in transforming food and water systems and on climate change adaptation and mitigation, as well as water and other natural resource interventions for increased equity and resilience.

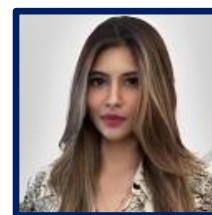


Claudia has more than 200 publications in the areas of water and food security and equity in climate resilience, irrigation, and energy systems, developed in collaboration with partners across Africa and Asia. In 2021, she was awarded honorary life memberships by both the International Water Resources Association and the International Association of Agricultural Economics for her lifelong contributions to the fields of water resources economics and agricultural economics, respectively. Claudia received a PhD in Agricultural Economics from the Center of Development Research, University of Bonn, and an MA in International Development Economics from Yale University.

Elizabeth A. Koch serves as the Senior Manager for International Programs at the Environmental Law Institute (ELI) and leads the Women in Water Diplomacy Network's Process Support Team, supporting the Network's development since inception. Elizabeth has over 15 years of experience supporting water diplomacy engagements in conflict sensitive basins on behalf of ELI, SIWI's Shared Waters Partnership programme, the UNESCO Category II International Centre for Water Cooperation, and EcoPeace Middle East. Elizabeth holds a MA in Government, Diplomacy and Strategy and BA in International Relations.



Farwa Aamer is the Director of South Asia Initiatives at the Asia Society Policy Institute (ASPI) in New York where she oversees the institute's policy work and projects in South Asia. Prior to ASPI, Farwa worked at the Stimson Center where she led research on the security, political, and socio-economic dimensions of transboundary river governance in the Himalayan region. Through her work, Farwa has organized and convened high-level Track II dialogues and discussions designed to facilitate greater inter-and intra-regional cooperation on issues and opportunities concerning water, energy, climate change, and sustainable development in South Asia, MENA, and Central Asia. Farwa also worked on highlighting the disproportionate impacts of climate change and water insecurity on women. From 2017 to 2021, Farwa was with the EastWest Institute (EWI) and served as the Director of the South Asia program. At EWI, Farwa worked on promoting non-traditional channels of diplomacy and establishing multi-stakeholder platforms for shared economic, financial, and geopolitical interests by bringing together policy shapers, media influencers, thought leaders, and business experts from within South Asia and across the globe. Farwa received her Bachelors of Science degree in Economics from University College London (UCL) and has a Masters in Management with Finance from BPP Business School, London.



Julienne Ndjiki (Ngo Yebga) has more than nine years of hands-on experience in water governance and transboundary cooperation, as well as integrated water resource management and gender and social inclusion. In her current role at the Stockholm International Water Institute (SIWI), where she serves as Programme Officer within the Water Cooperation and Diplomacy (WCD) department, Julienne is responsible for supporting water diplomacy processes as part of the SIWI's Shared Waters Partnership programme through stakeholders' engagement and partnership building, technical capacity strengthening and training at various levels. Julienne exhibits great skills in design, monitoring, evaluation, and learning, as well as facilitation, programme management, and development. In addition to her Master's degree in Water Resource Management, Julienne holds a Master's degree in Animal Biology. Julienne is a native French speaker and is fully proficient in English.



Marlène Elias is the Gender Lead at the Alliance of Bioversity International and the International Center for Tropical Agriculture. She leads the Alliances Module of the CGIAR GENDER Impact Platform and the Work Package on Developing the Capacities of Emerging Water–Energy–Food–Environment (WEFE) Nexus Leaders in the CGIAR Initiative on NEXUS Gains. Marlène has a BSc in Biology and Environmental Sciences, and an MA and PhD in Geography. Rooted in a feminist political ecology approach, her research focuses on gendered dimensions of forest management and restoration, gender norms in agri-food systems, forest/agri-food value chains, and women's resource rights, predominantly in West Africa and South and Central Asia.

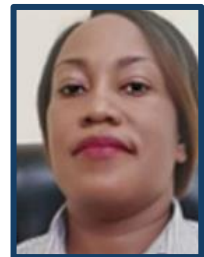


Before joining the Alliance, Marlène conducted research on gender, forest-based livelihoods, agroforestry, and forest management in Latin America and Africa. Among other positions, she has worked in UNESCO's Division for Gender Equality and as a Fellow in the Department of Anthropology of Université Laval in Canada. She is the founder of the NGO Association Burkina Canada that facilitates education to underprivileged girls and boys in Burkina Faso. Marlène is based in Montreal, Canada.

Nompumelelo Ntshalintshali-Motsa is the former Sanitation and Water for All (SWA) Regional Coordinator for Africa. She is a member of the Women in Water Diplomacy Leadership Council and a founder member and Executive Director of the GlobeCare Foundation. Ms. Ntshalintshali is a development practitioner focusing on WASH governance, gender equality and social inclusion, climate change, and policy development and execution, with over 20 years of extensive experience and proven record of achievements at national, sub-regional, regional and international platforms. As a Development Practitioner, Ms. Ntshalintshali has a vast experience in multi-stakeholder engagement programming. She has led the sector policy formulation and execution, governance, advocacy, rural/community development, behaviour change communication, gender, climate action, and sector coordination.



Tumaini Mwamyalla serves as Tanzania's National Desk Officer for the Nile Basin Initiative (NBI) and principal project preparation and coordination officer within the Ministry of Water. She holds a MSc in Community Economic Development from New Hampshire University, an MSc in Engineering Management from the University of Dar Es Salaam as well as a postgraduate certificate in Integrated Water Resources Management from the Stockholm International Water Institute. Throughout her career, Tumaini has been responsible for coordinating and supervising, preparing and executing transboundary water resources management and development plans, as well as implementing national, regional, and international programs at national level. Tumaini has eighteen years of experience in transboundary water resources management coordinating transboundary issues with different regional cooperation institutions including the African Ministers' Council on Water (AMCOW), the NBI, the Zambezi Watercourse Commission (ZAMCOM), Lake Victoria Basin Commission (LVBC), Lake Tanganyika Authority, Ruvuma Basin Commission, and Songwe River Commission. Tumaini has participated in processes from negotiations to ratification in the Nile Basin Comparative Agreement Framework (CFA) dialogues and in the preparation and implementation of several Shared Vision Programmes under the Nile Basin Initiative.



Yodit Balcha is a founding member of the Women in Water Diplomacy Network and serves on the Network's Leadership Council. Yodit is also a founding member of the African Women in Water and Climate Association. Currently, Yodit works as a Climate Adaptation research officer at the Alliance of Bioversity International and CIAT – Africa Hub in Addis Ababa, Ethiopia. Until early 2022, Yodit served as the Senior Climate Change Adaptation Advisor at the Ministry of Water, Irrigation, and Energy in Ethiopia, where she was responsible for mainstreaming climate change adaptation and resilience plans into the ministry's sectoral strategic and development projects, she was also one of the few women water diplomats during the GERD negotiations back in 2019. Her work focuses on the nexus approach of Climate, Land (Agriculture), Energy, and Water Systems. Yodit holds a Master's degree in Sustainable Development from Uppsala University, a Master's course in Agricultural Economics from Haramaya University, and a Bachelor's degree in Natural Resource Economics and Management from Mekelle University.

