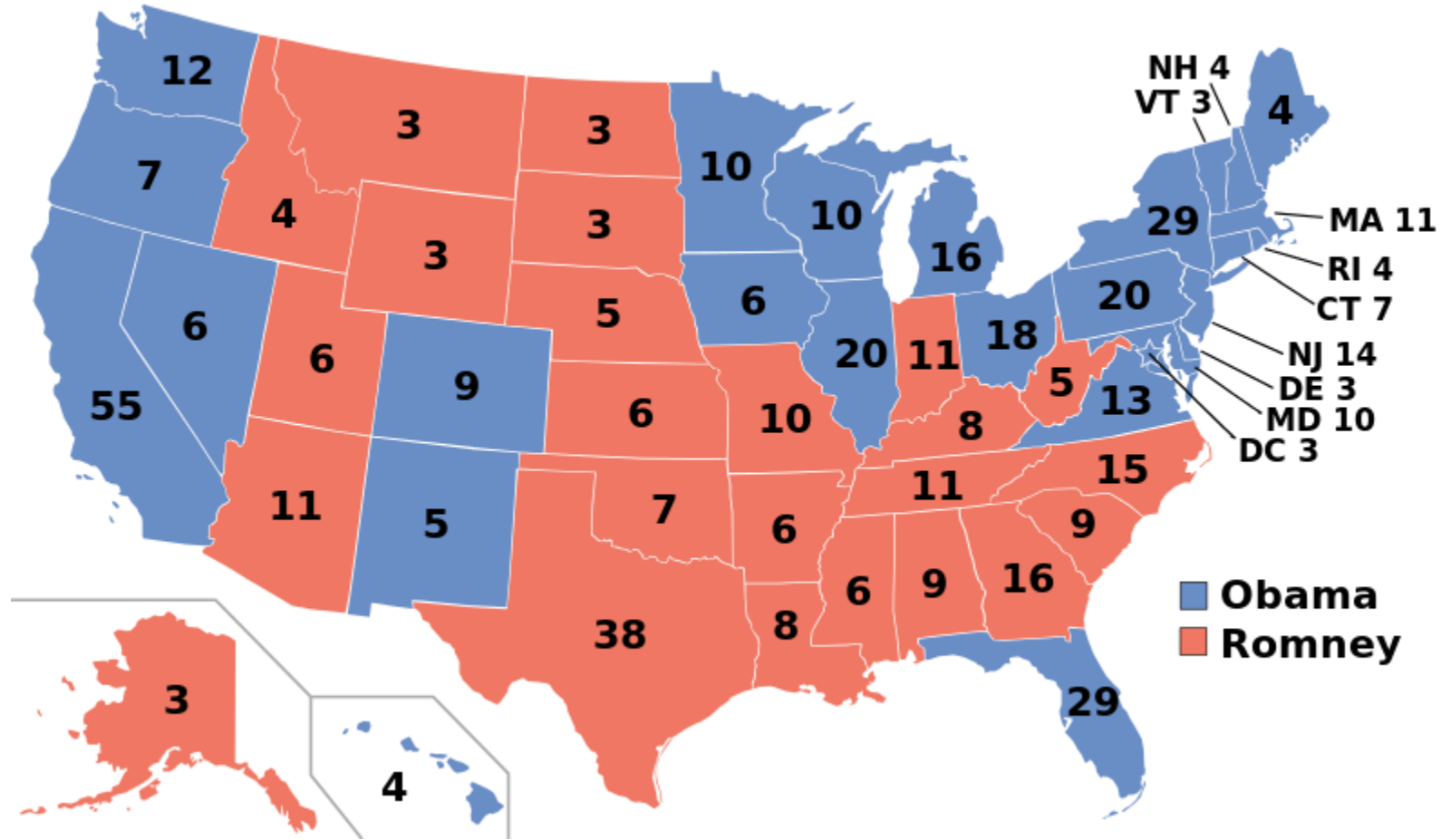




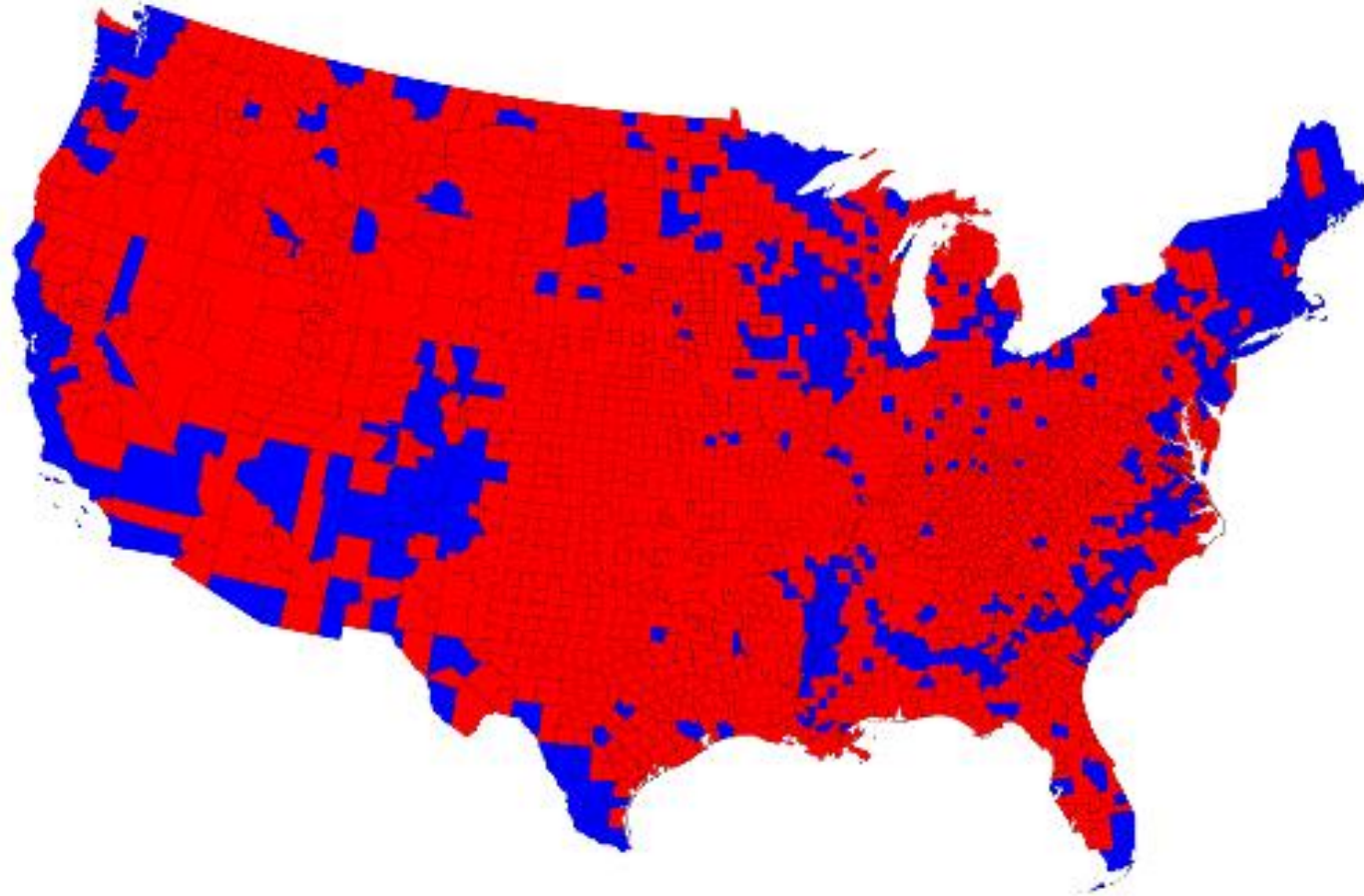
# FAITHFUL CITIZENSHIP IN A PLURALISTIC WORLD

**Kevin R. den Dulk**  
Henry Institute and Dept. of  
Political Science

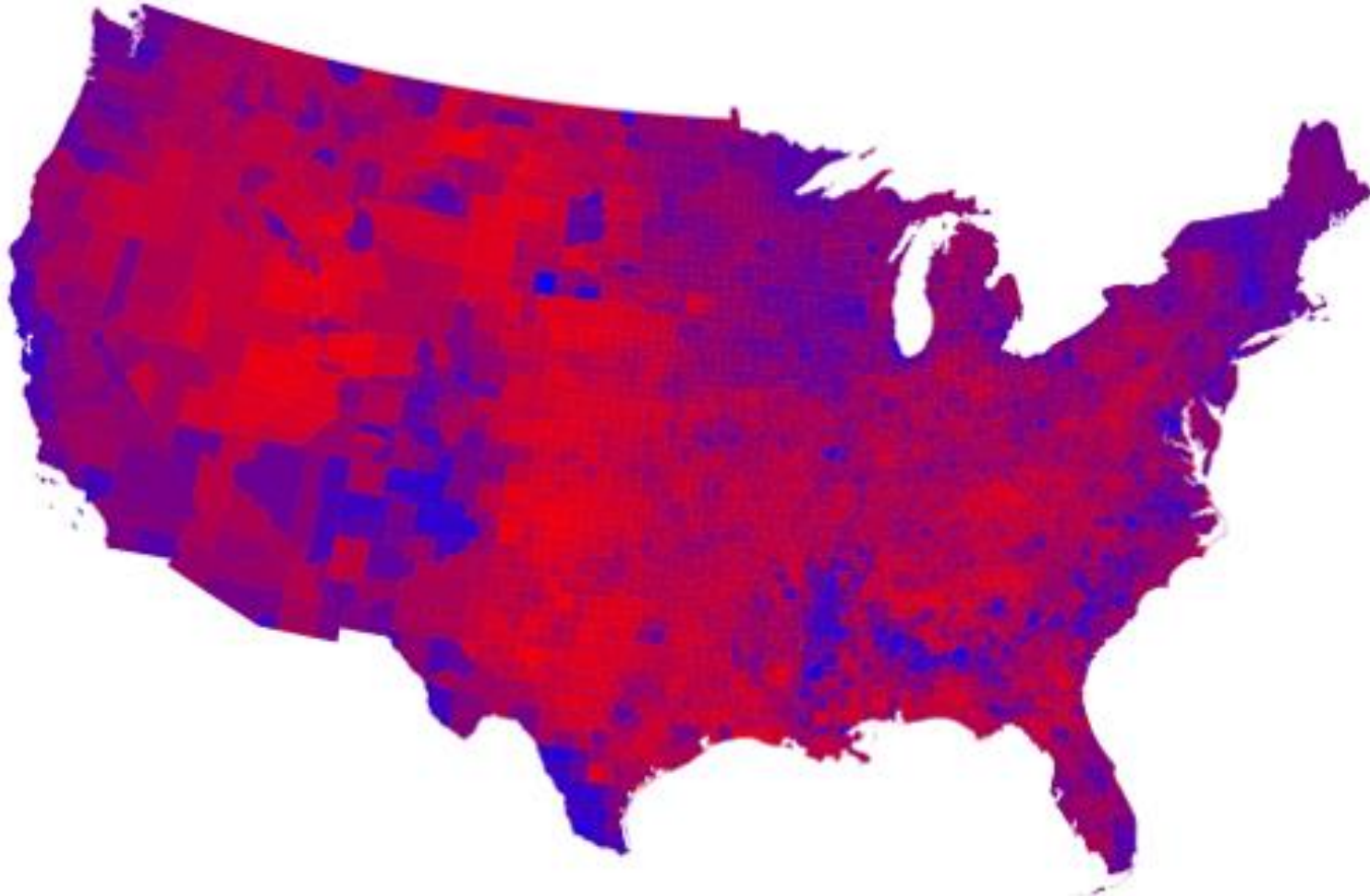
# U.S. IN RED AND BLUE 2012



# U.S. IN RED AND BLUE BY COUNTY, 2012

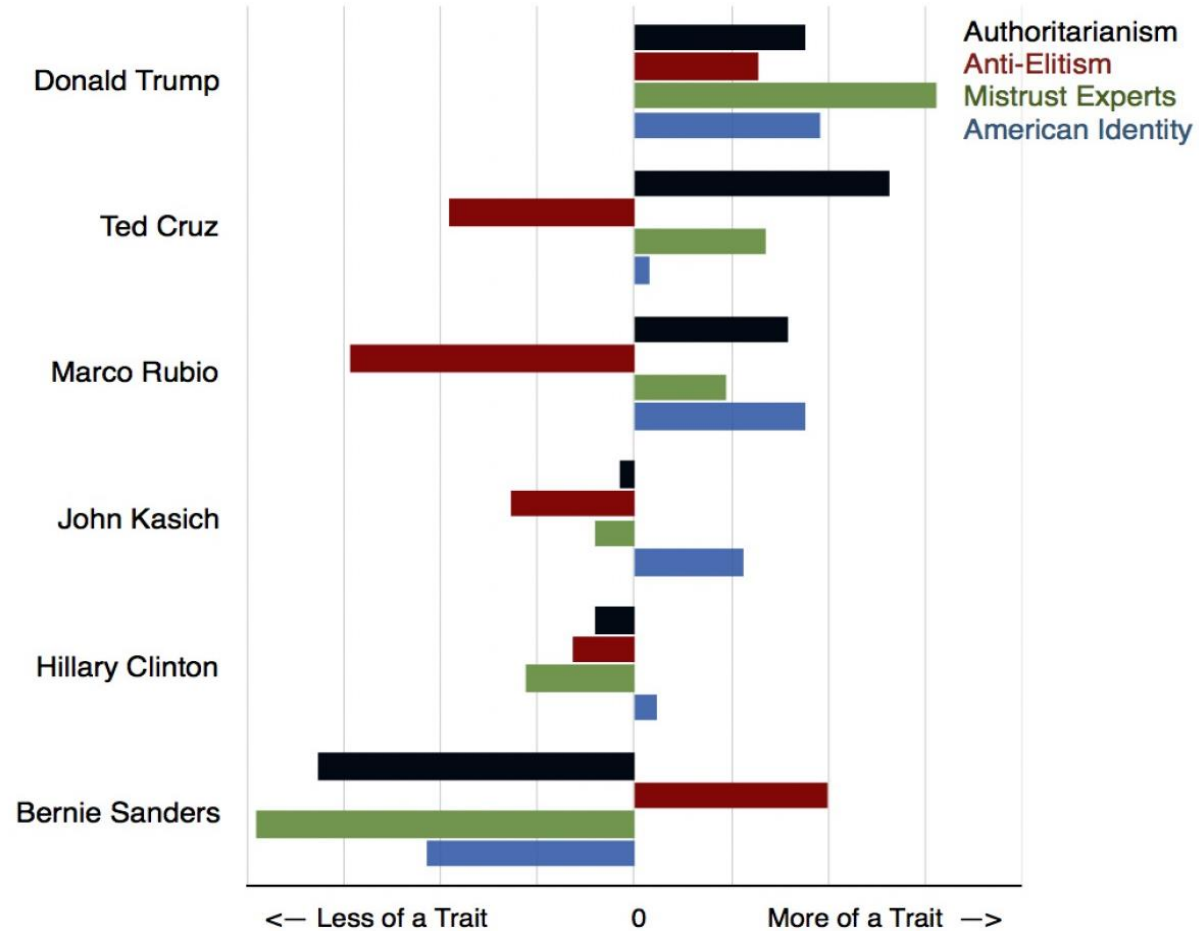


# U.S. AS PURPLE HAZE: 2012



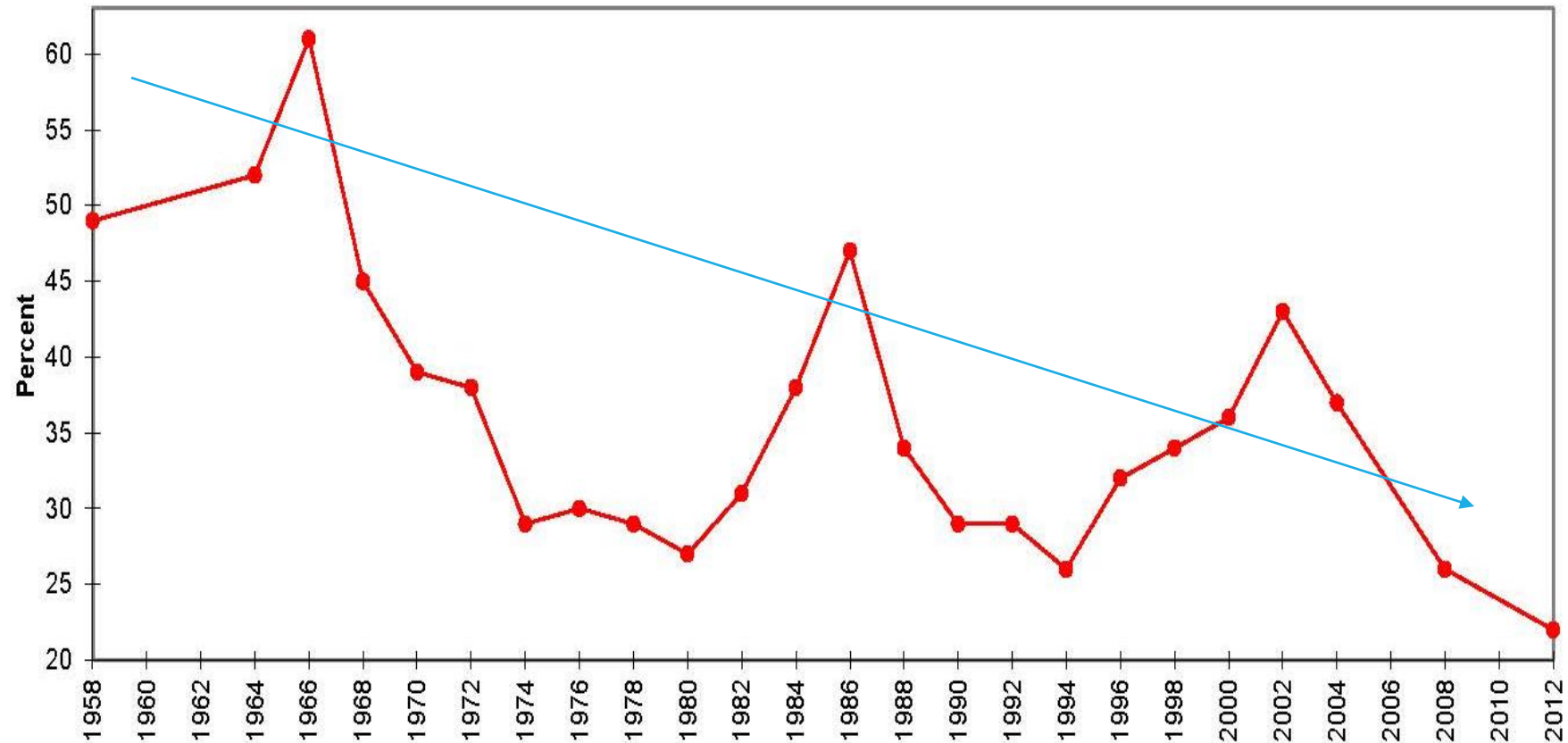
SOURCE: [HTTP://WWW-PERSONAL.UMICH.EDU/~MEJN/ELECTION/2012/COUNTYMAPPURPLE1024.PNG](http://www-personal.umich.edu/~mejn/election/2012/countymappurple1024.png)

# PSYCHOLOGICAL TRAITS OF VOTERS, BY CANDIDATE



Source: Survey Sampling International poll of 1,044 adults conducted Feb. 26 through Mar. 3, 2016.

# TRUST IN GOVERNMENT 1958-2012

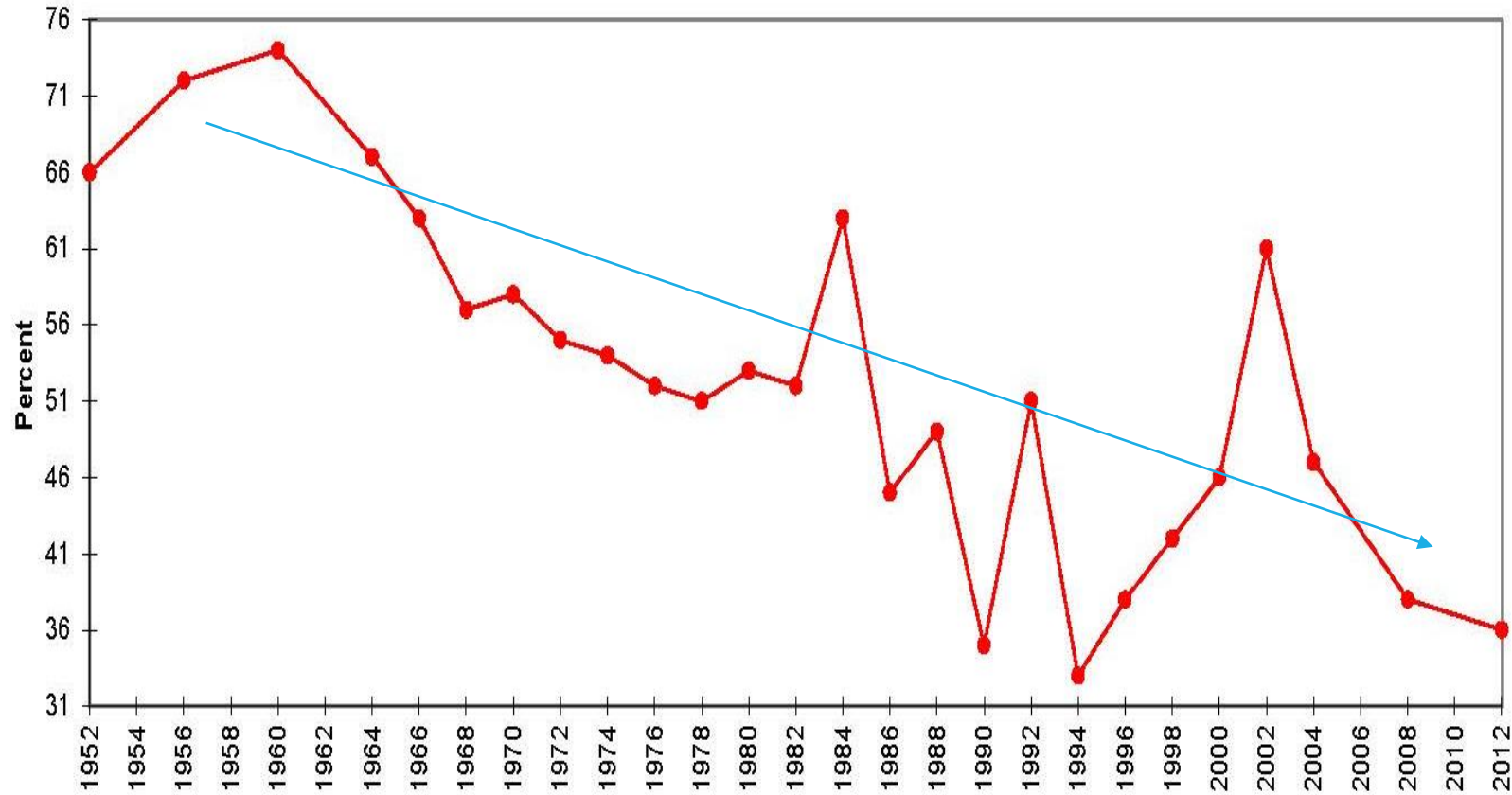


Graph 5A.5.1 Source: The American National Election Studies 04NOV15

*note: no Time Series studies were conducted in years 1950, 2006 or 2010; in other years without data the question was not asked*



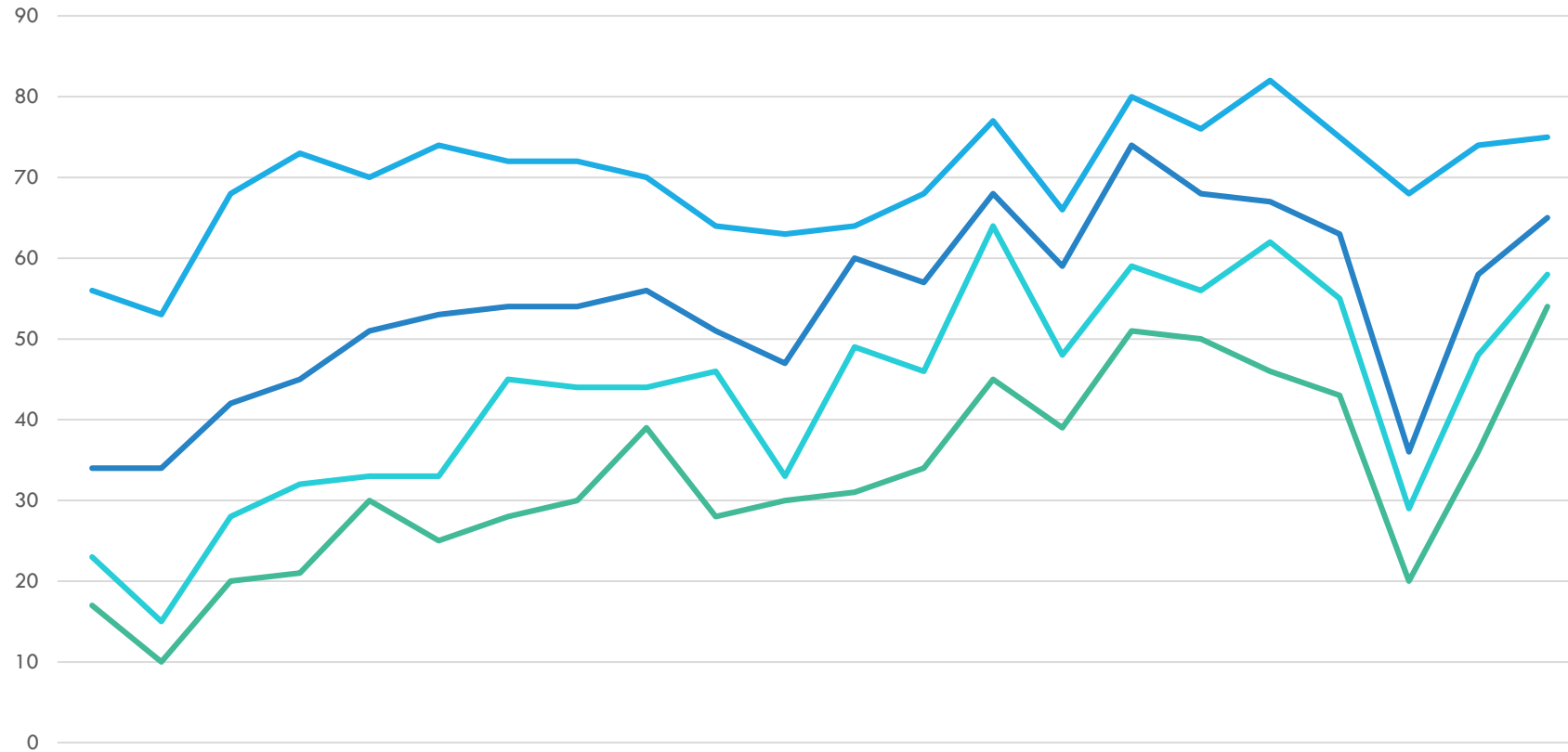
# EXTERNAL POLITICAL EFFICACY 1952-2012



Graph 5B.4.1 Source: The American National Election Studies 04NOV15

*note: no Time Series studies were conducted in years 1950, 2006 or 2010; in other years without data the question was not asked*

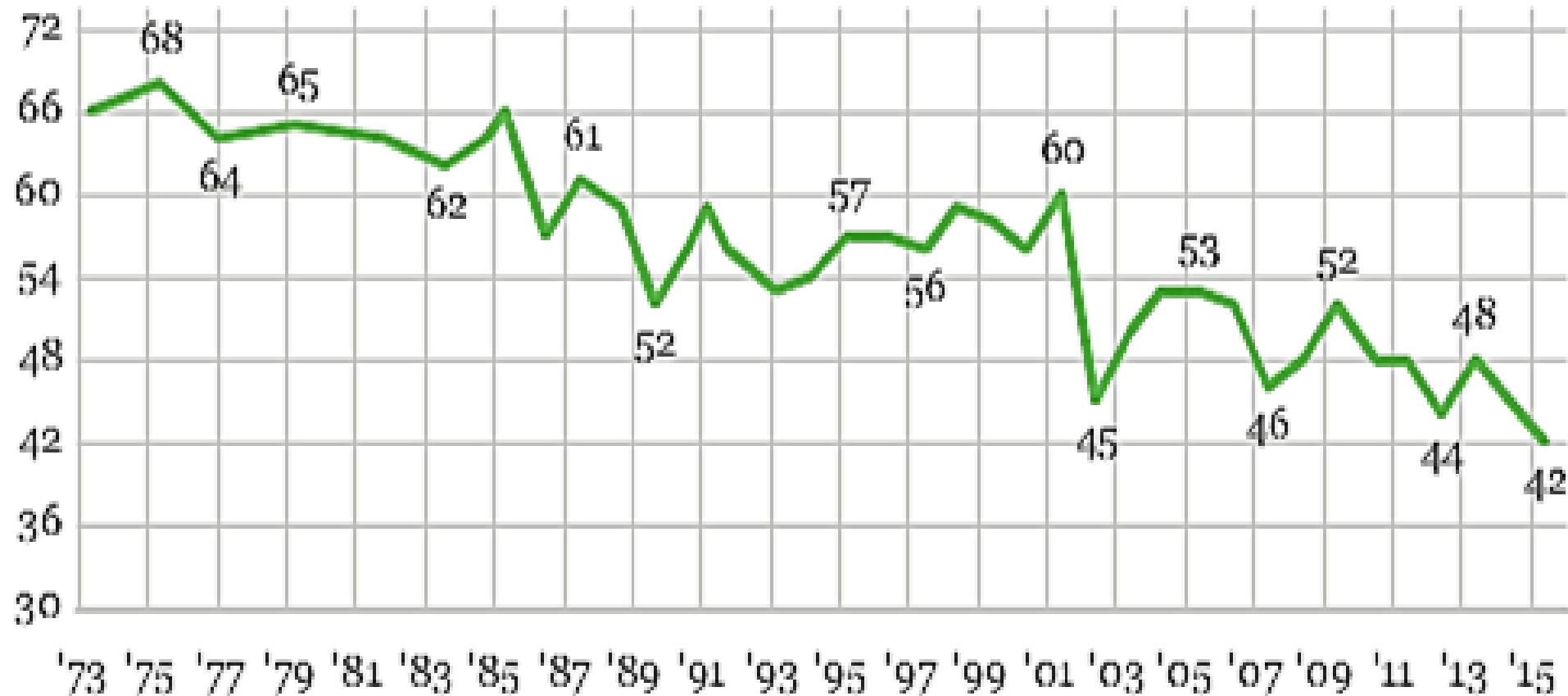
# PUBLIC OFFICIAL DON'T CARE WHAT I THINK



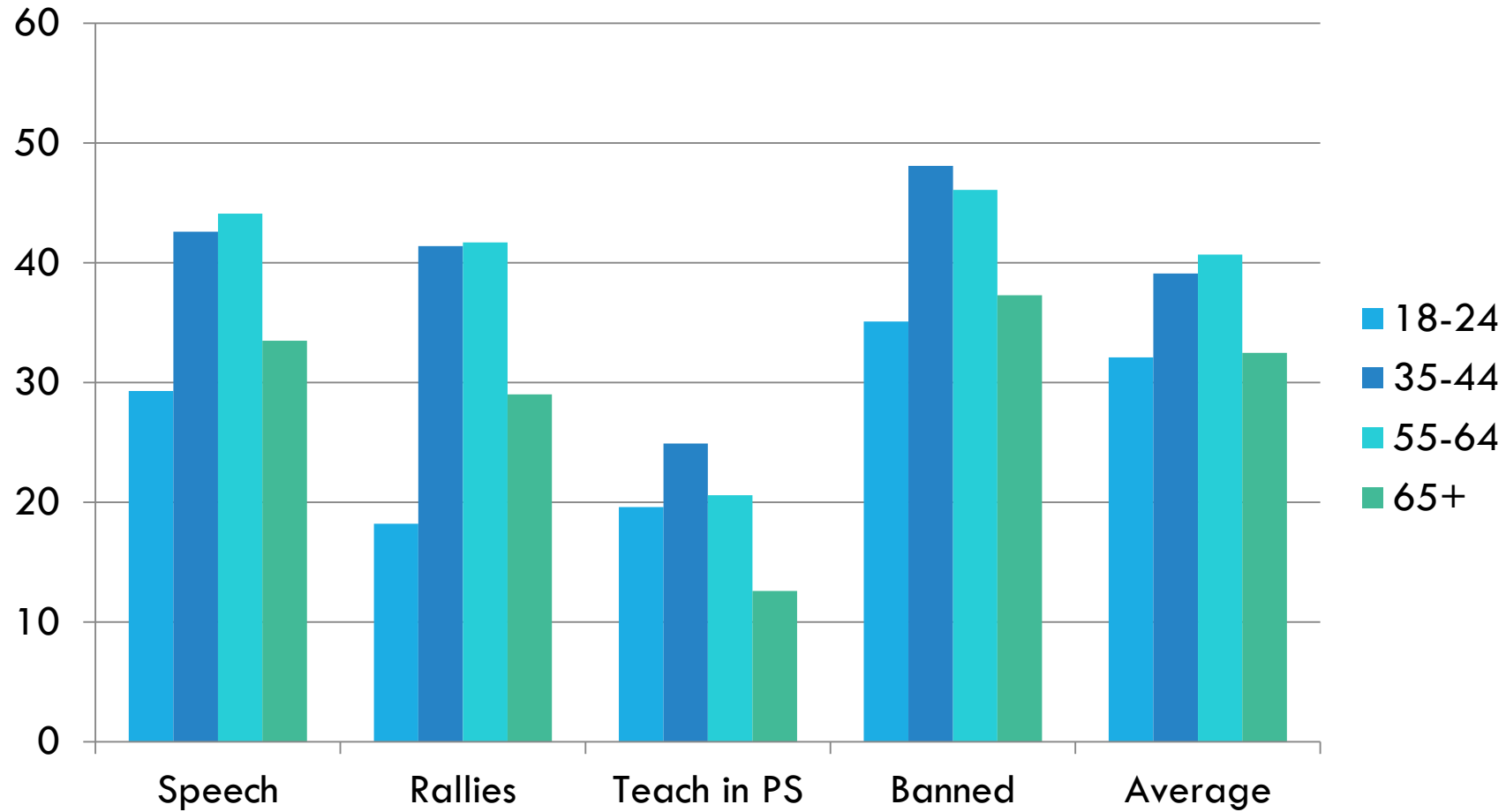
— Grade Sch./Some High Sch. 49 \*\* 47 \*\* 39 \*\*
 — High School Diploma 29 \*\* 20 \*\* 21 \*\*
 — Some College, no Degree 17 \*\* 12 \*\* 11 \*\*
 — College Degree/ Post-grad 11 \*\* 7 \*\* 15 \*\*



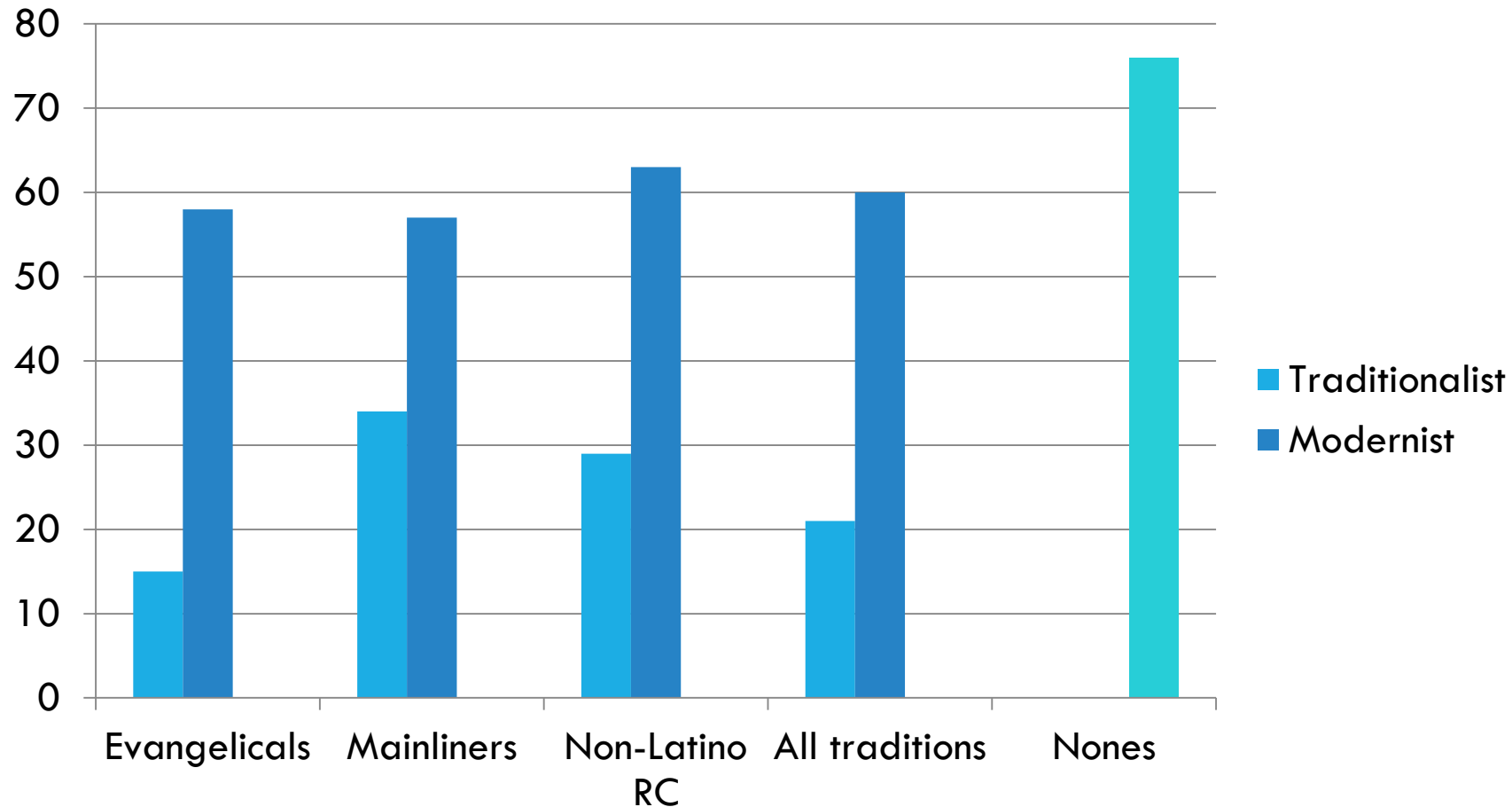
# % OF AMERICANS WITH HIGH CONFIDENCE IN ORGANIZED RELIGION



# POLITICAL TOLERANCE BY AGE

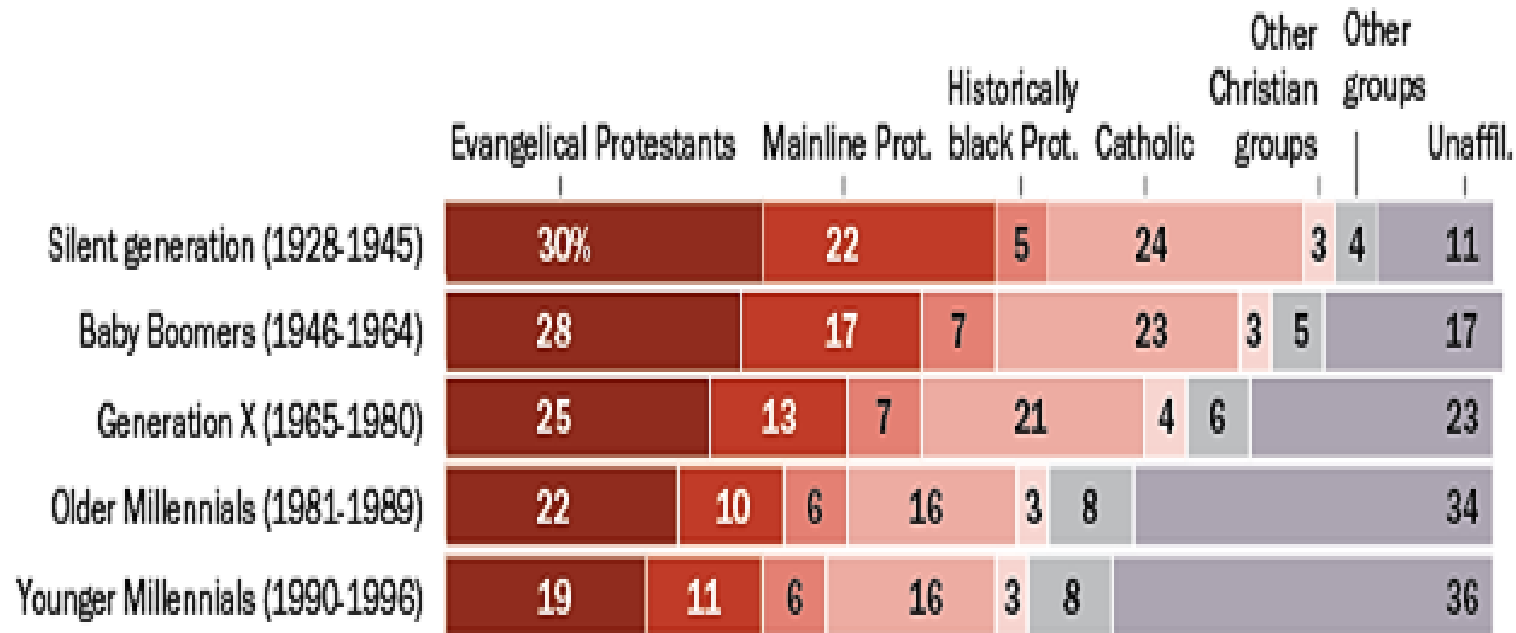


# PERCENTAGE VOTE FOR OBAMA, BY TRADITION AND TRADITIONALISM



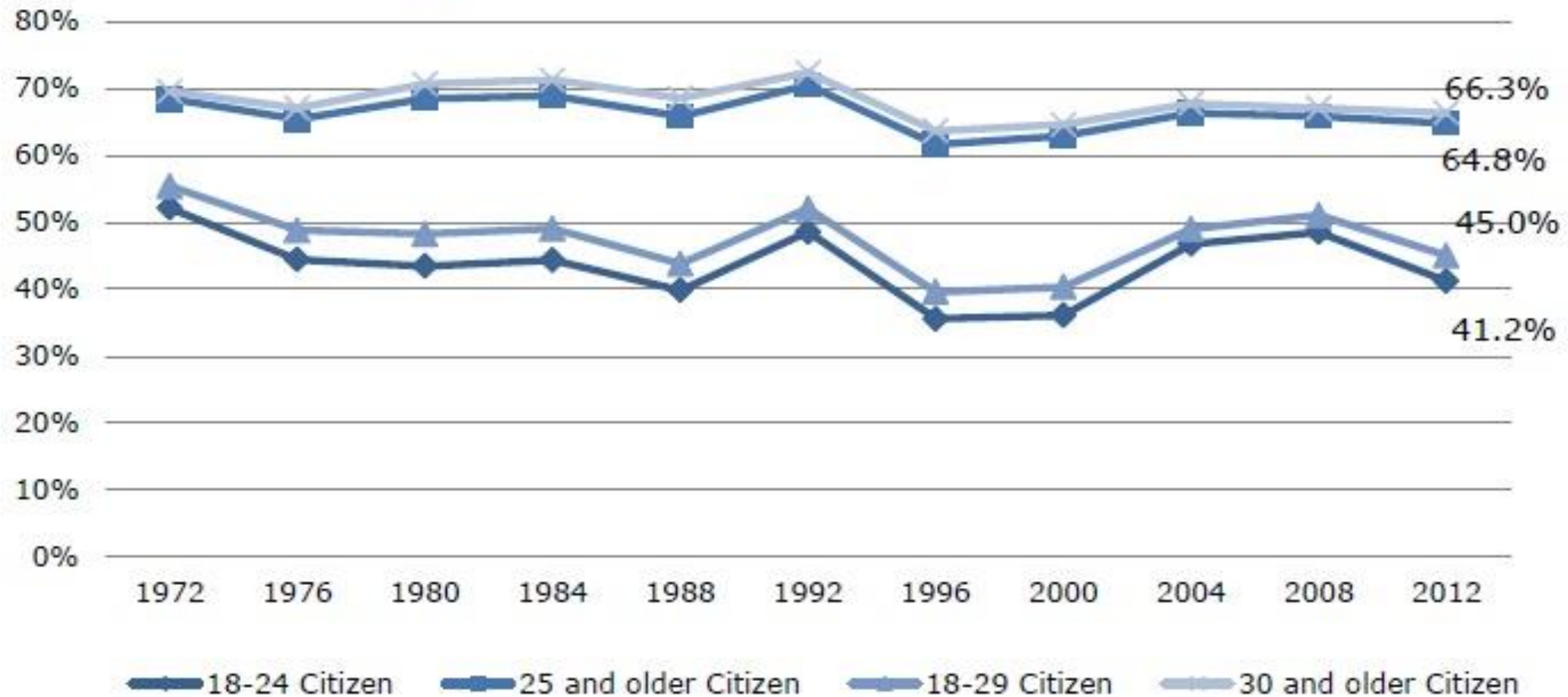
SOURCE: HENRY NATIONAL SURVEY 2008

# GENERATIONAL REPLACEMENT AND THE “NONES”



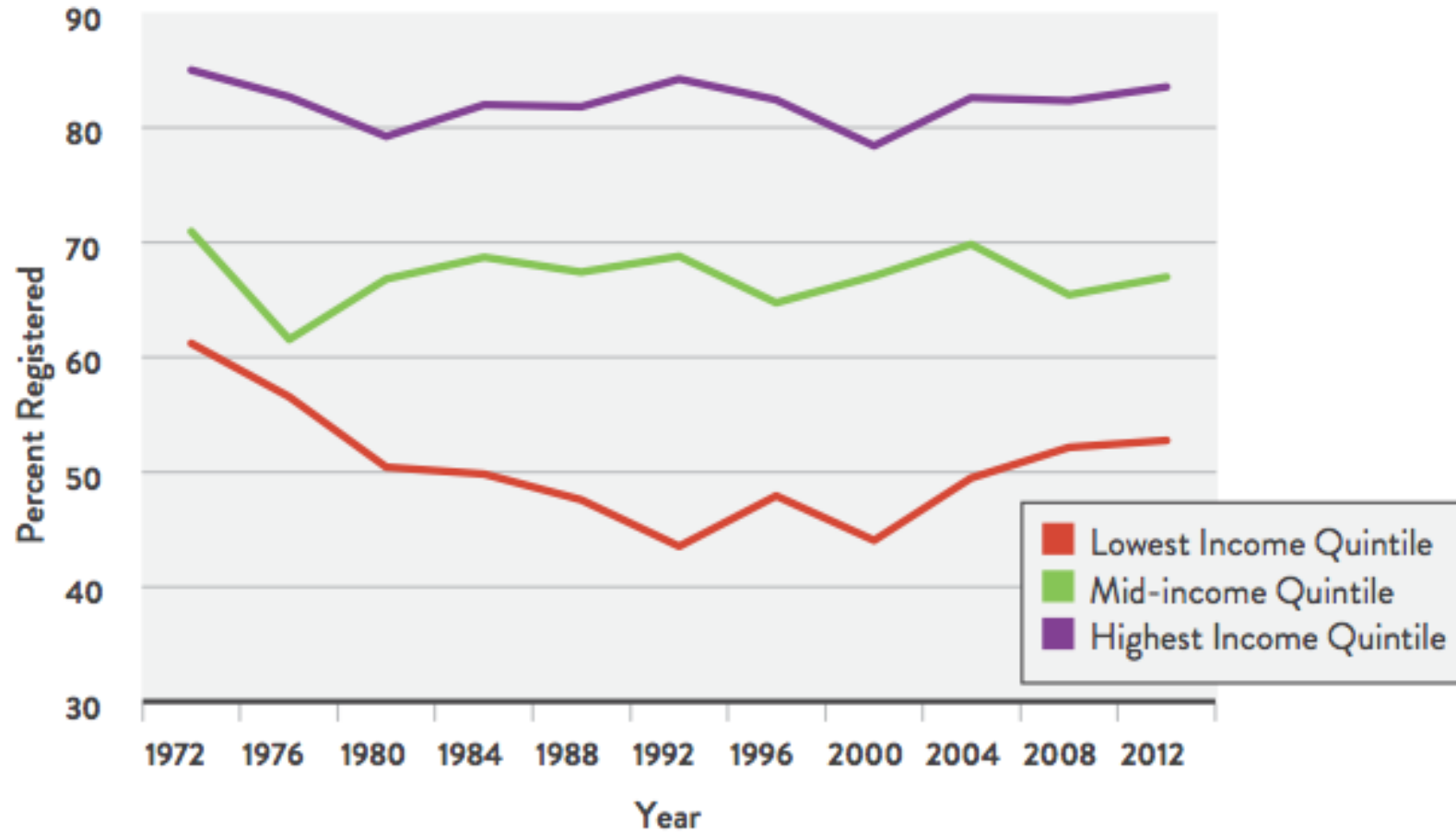
2014 Religious Landscape Study, conducted June 4-Sept. 30, 2014. Figures may not add to 100% because of rounding. Don't know/refused answers not shown. "Other Christian groups" includes Mormons, Orthodox Christians, Jehovah's Witnesses and a number of smaller Christian groups.

# VOTER TURNOUT BY AGE, 1972-2012



Source: CIRCLE's tabulations from the CPS Nov. Voting and Registration Supplements, 1972-2012

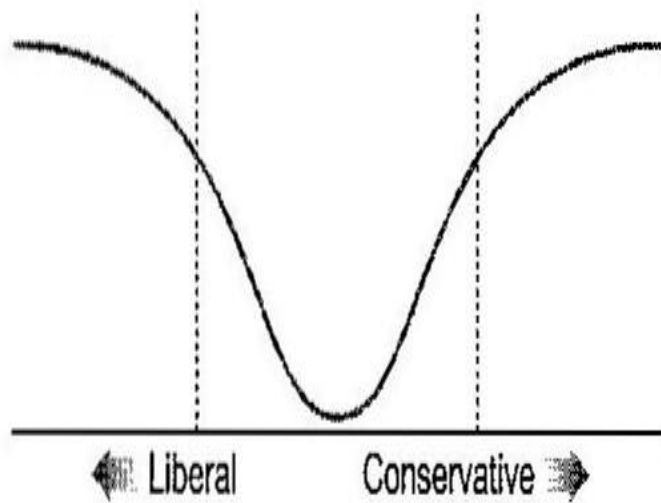
# VOTER REGISTRATION BY INCOME, 1972-2012



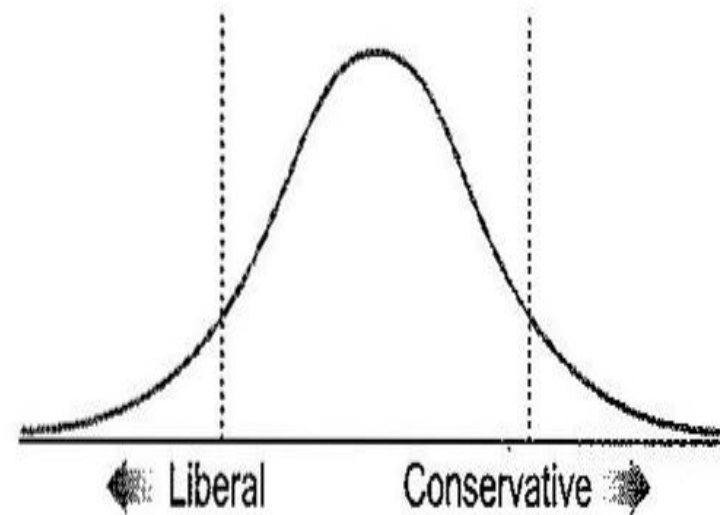
SOURCE: U.S. Census Bureau, Current Population Survey<sup>23</sup>

# DISTRIBUTIONS OF OPINION

Closely and deeply divided

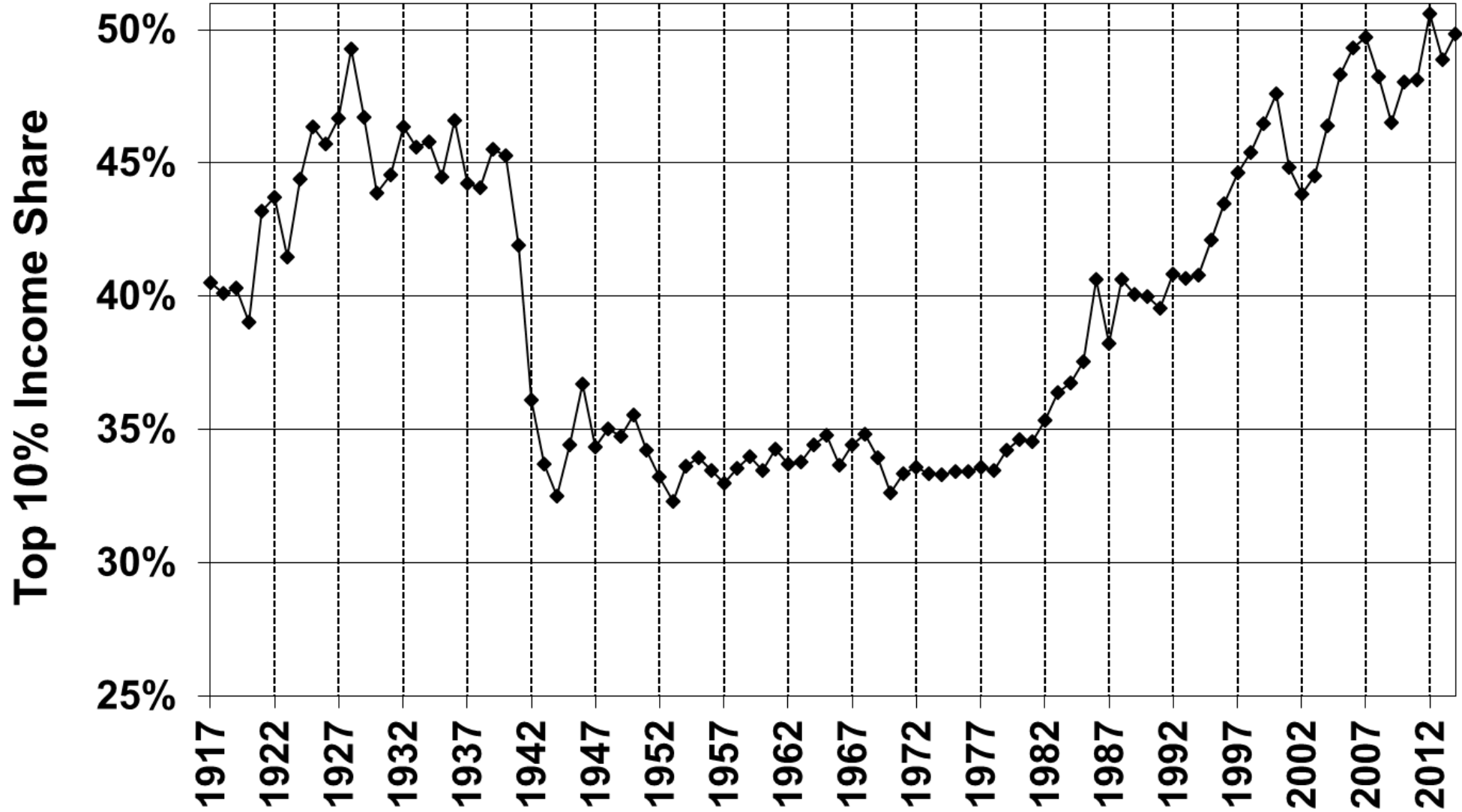


Closely but not deeply divided





## Top 10% Pre-tax Income Share in the US, 1917-2014



Source: Piketty and Saez, 2003 updated to 2014. Series based on pre-tax cash market income including realized capital gains and excluding government transfers