



Haw Creek Community Association

Haw Creek Park Greenway
for Buncombe County Open Space Bond Team

June 25, 2024

Topics

- Organization Details
- Project Details
- Project Impact
- Alignment with Evaluation Criteria





Haw Creek Community Association (HCCA)

Key Personnel

- Chris Pelly
- Christina Maggi
- Bruce Black
- Shelley McKechnie
- Bebe & Jack Tarleton



Our Vision

- Restore & preserve natural beauty
- Improve quality of life
- Provide opportunity for creekside passive recreation



Haw Creek Community Association



- 501(c)3
- Established 1984
- Elected board of 12 volunteers
- Responsibly manage an annual budget

Experience

- Haw Creek Park
- Masters Park
- Masters Park parking lot & kiosk,
entrance sign, Little Free Library, etc.



Capacity to Manage Project



- Personnel
- Experience
- Infrastructure in place to manage project with transparency and accountability

Key Partners

All have provided written endorsements

- Bebe and Jack Tarleton
- Connect Buncombe
- City of Asheville





Haw Creek Park Greenway Project Details

Scope

- Build 585-foot natural surface creekside trail
- Acquire easement for private land
- Erect Signage, fencing, gates



Scope

- Build footbridge: ~20ft long, 8ft wide
- Remove rampant invasives
- Rebuild, maintain native ecosystem
- Build Informational web pages



Timeline



- 2024
 - August - MOU, Easement process
 - Sept/Oct - Sign contracts
 - Nov/Dec - Permitting, construction starts (pending contractors' schedule)
 - Dec - Soft opening (pending contractors' schedule)

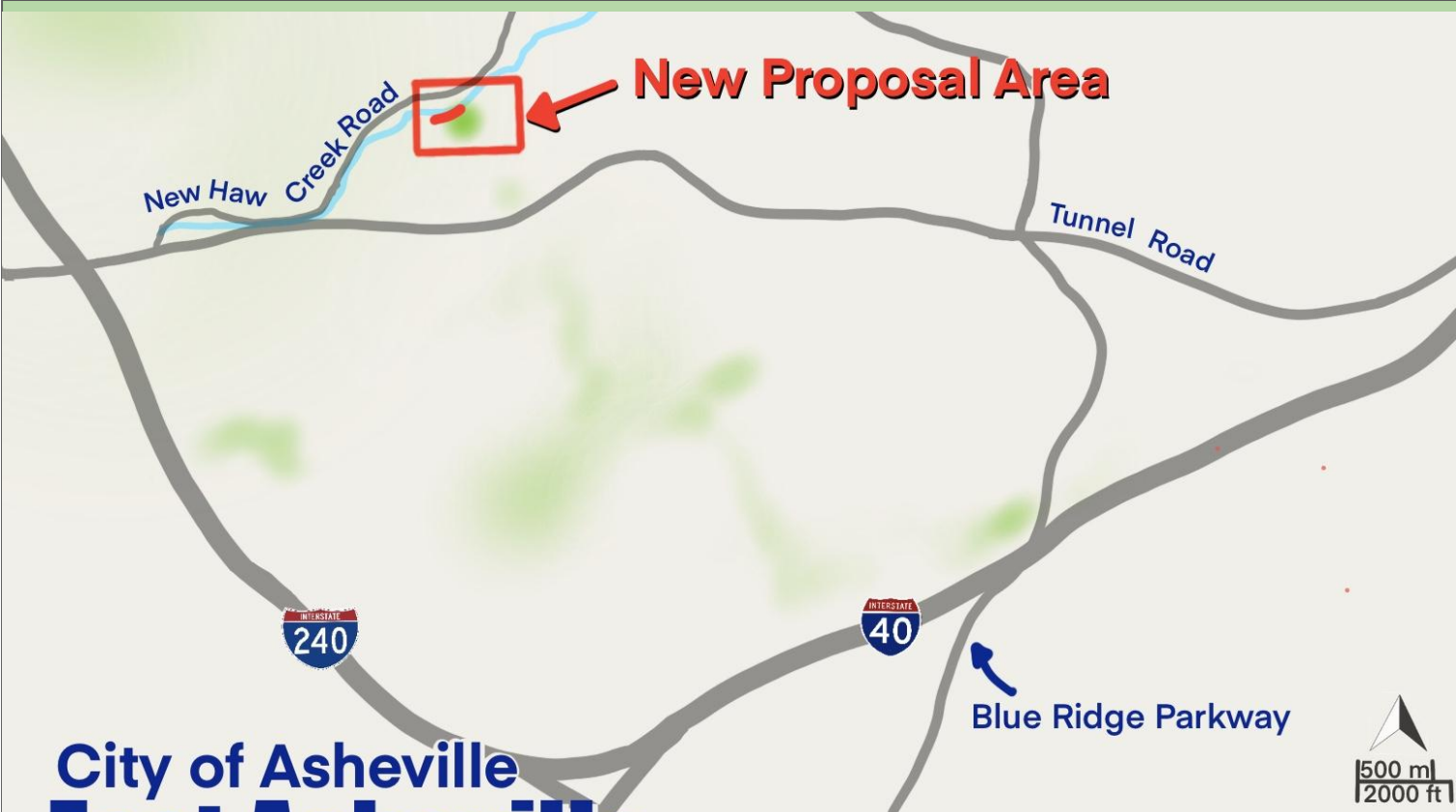
Timeline

- **2025**
 - Jan - April - finish construction, remove invasive plants, plant native species, plan opening celebration
 - **May - Grand Opening**



Photos/Design





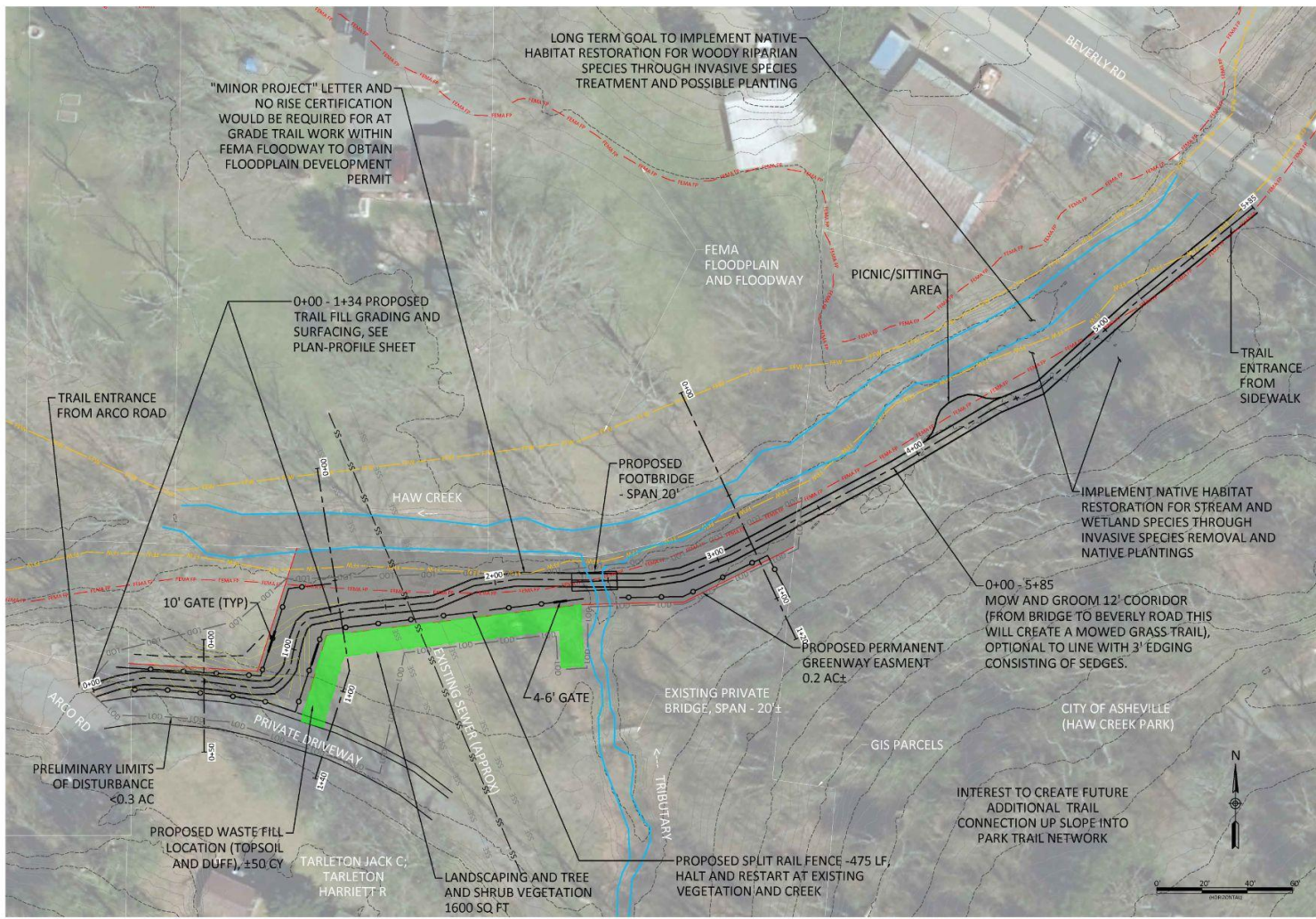
City of Asheville East Asheville



Proposed Greenway

-  Residential
-  Commercial

2023 Haw Creek Community Association based on OpenStreetMap.org



"MINOR PROJECT" LETTER AND NO RISE CERTIFICATION WOULD BE REQUIRED FOR AT GRADE TRAIL WORK WITHIN FEMA FLOODWAY TO OBTAIN FLOODPLAIN DEVELOPMENT PERMIT

LONG TERM GOAL TO IMPLEMENT NATIVE HABITAT RESTORATION FOR WOODY RIPARIAN SPECIES THROUGH INVASIVE SPECIES TREATMENT AND POSSIBLE PLANTING

0+00 - 1+34 PROPOSED TRAIL FILL GRADING AND SURFACING, SEE PLAN-PROFILE SHEET

FEMA FLOODPLAIN AND FLOODWAY

PICNIC/SITTING AREA

TRAIL ENTRANCE FROM ARCO ROAD

TRAIL ENTRANCE FROM SIDEWALK

HAW CREEK

PROPOSED FOOTBRIDGE - SPAN 20'

IMPLEMENT NATIVE HABITAT RESTORATION FOR STREAM AND WETLAND SPECIES THROUGH INVASIVE SPECIES REMOVAL AND NATIVE PLANTINGS

10' GATE (TYP)

0+00 - 5+85 MOW AND GROOM 12' COORIDOR (FROM BRIDGE TO BEVERLY ROAD THIS WILL CREATE A MOWED GRASS-TRAIL), OPTIONAL TO LINE WITH 3' EDGING CONSISTING OF SEDGES.

PROPOSED PERMANENT GREENWAY EASMENT 0.2 AC±

4-6' GATE

EXISTING PRIVATE BRIDGE, SPAN - 20'±

CITY OF ASHEVILLE (HAW CREEK PARK)

PRELIMINARY LIMITS OF DISTURBANCE <0.3 AC

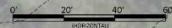
PROPOSED WASTE FILL LOCATION (TOPSOIL AND DUFF), ±50 CY

TARLETON JACK C, TARLETON HARRIETT R

LANDSCAPING AND TREE AND SHRUB VEGETATION 1600 SQ FT

PROPOSED SPLIT RAIL FENCE -475 LF, HALT AND RESTART AT EXISTING VEGETATION AND CREEK

INTEREST TO CREATE FUTURE ADDITIONAL TRAIL CONNECTION UP SLOPE INTO PARK TRAIL NETWORK



PRELIMINARY DO NOT USE FOR CONSTRUCTION

Conceptual Design - Haw Creek Greenway Connector

Budget



Request from County	\$102,182
Fundraising, Grants Secured	\$15,945
Total Project Budget	\$118,127

Grants and Fundraising

- \$5K from Connect Buncombe
- \$10.9K from Community Fundraiser





Major Budget Items

- Trail Work: \$28.5K
 - includes \$2.5K mobilization
- Footbridge: \$22.5K
 - includes \$1K mobilization
- Easement acquisition \$11K
 - includes \$4K survey
- Invasive removal: \$26.3K
 - includes \$2.5K invasive/threatening tree/limb removal



Haw Creek Park Greenway Project Impact

Conservation Impact



- Restore invasive-choked area to a natural ecosystem
- Downstream benefits
- Conserve land forever
- Provide a model for restoring a natural ecosystem that all can enjoy

Community Impact

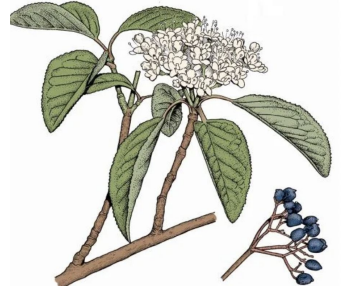
- First public access to namesake creek
- Mostly flat trail
- Convenient access
 - Oasis of calm off a well-traveled road
 - Hundreds of people could walk to the trailhead
 - Connector between community resources



Community Impact

Letters of Support

- Evergreen Community Charter School
- Haw Creek Elementary School
- East Asheville Academy
- Pennycup Coffee
- Haw Creek Mews Townhomes
- Creekside Taphouse



Community Impact



Unsolicited comments from donors:

“So excited about this”

“I’m 80 and not able to walk very far, but this will benefit families and children for years to come. Who knows? Maybe I can even walk it if I try!”

“A greenway would be beautiful!”

Community Impact



Unsolicited comments from donors:

“Great plan!”

“Beautiful addition!”

“I have longed for a greenway in Haw Creek since I moved here 29 years ago. Thank you HCCA for bringing this dream to fruition.”



Haw Creek Park Greenway Alignment with Evaluation Criteria

Alignment with Evaluation Criteria



- Conservation & Environmental Impact
- Feasibility
- Accessibility
- Equity
- Long-term Management & Maintenance
- Costs & Leveraged Funding
- Alignment with County Plans
- Safety

Alignment with Evaluation Criteria



- ✓ Conservation & Environmental Impact
- Feasibility
- Accessibility
- Equity
- Long-term Management & Maintenance
- Costs & Leveraged Funding
- Alignment with County Plans
- Safety

Alignment with Evaluation Criteria



- ✓ Conservation & Environmental Impact
- ✓ Feasibility
- Accessibility
- Equity
- Long-term Management & Maintenance
- Costs & Leveraged Funding
- Alignment with County Plans
- Safety

Alignment with Evaluation Criteria



- ✓ Conservation & Environmental Impact
- ✓ Feasibility
- ✓ Accessibility
- Equity
- Long-term Management & Maintenance
- Costs & Leveraged Funding
- Alignment with County Plans
- Safety

Alignment with Evaluation Criteria



- ✓ Conservation & Environmental Impact
- ✓ Feasibility
- ✓ Accessibility
- ✓ Equity
- Long-term Management & Maintenance
- Costs & Leveraged Funding
- Alignment with County Plans
- Safety

Alignment with Evaluation Criteria



- ✓ Conservation & Environmental Impact
- ✓ Feasibility
- ✓ Accessibility
- ✓ Equity
- ✓ Long-term Management & Maintenance
- ☐ Costs & Leveraged Funding
- ☐ Alignment with County Plans
- ☐ Safety

Alignment with Evaluation Criteria



- ✓ Conservation & Environmental Impact
- ✓ Feasibility
- ✓ Accessibility
- ✓ Equity
- ✓ Long-term Management & Maintenance
- ✓ Costs & Leveraged Funding
- Alignment with County Plans
- Safety

Alignment with Evaluation Criteria



- ✓ Conservation & Environmental Impact
- ✓ Feasibility
- ✓ Accessibility
- ✓ Equity
- ✓ Long-term Management & Maintenance
- ✓ Costs & Leveraged Funding
- ✓ Alignment with County Plans
- Safety

Alignment with Evaluation Criteria



- ✓ Conservation & Environmental Impact
- ✓ Feasibility
- ✓ Accessibility
- ✓ Equity
- ✓ Long-term Management & Maintenance
- ✓ Costs & Leveraged Funding
- ✓ Alignment with County Plans
- ✓ Safety

**Thank you for your time
and energy evaluating our
proposal!**



Website: hawcreekavl.com
Email: info@hawcreekavl.com

