



Asheville-Buncombe

Air Quality Agency

Air Quality Update post Hurricane Helene

March 21, 2025

Monitoring Network

- PM 2.5 – Board of Education Building
- Ozone – Bent Creek
- Air Toxics – AB Tech



AB Air Quality Permitting Program

- 7 Title V Facilities
- 10 Synthetic Minor Facilities
- 56 Small Facilities
- 150 Stage I Vapor Recovery Facilities

- Demolition and Asbestos Removal Permits
- City of Asheville and Buncombe County Permit Reviews

AB Air Quality Compliance and Enforcement

- Open Burning
 - 70-100 Complaints Annually
- Dust, Odor, Facility/Industrial Emissions
- Area Sources: Drycleaners, Risk Management Plan Facilities

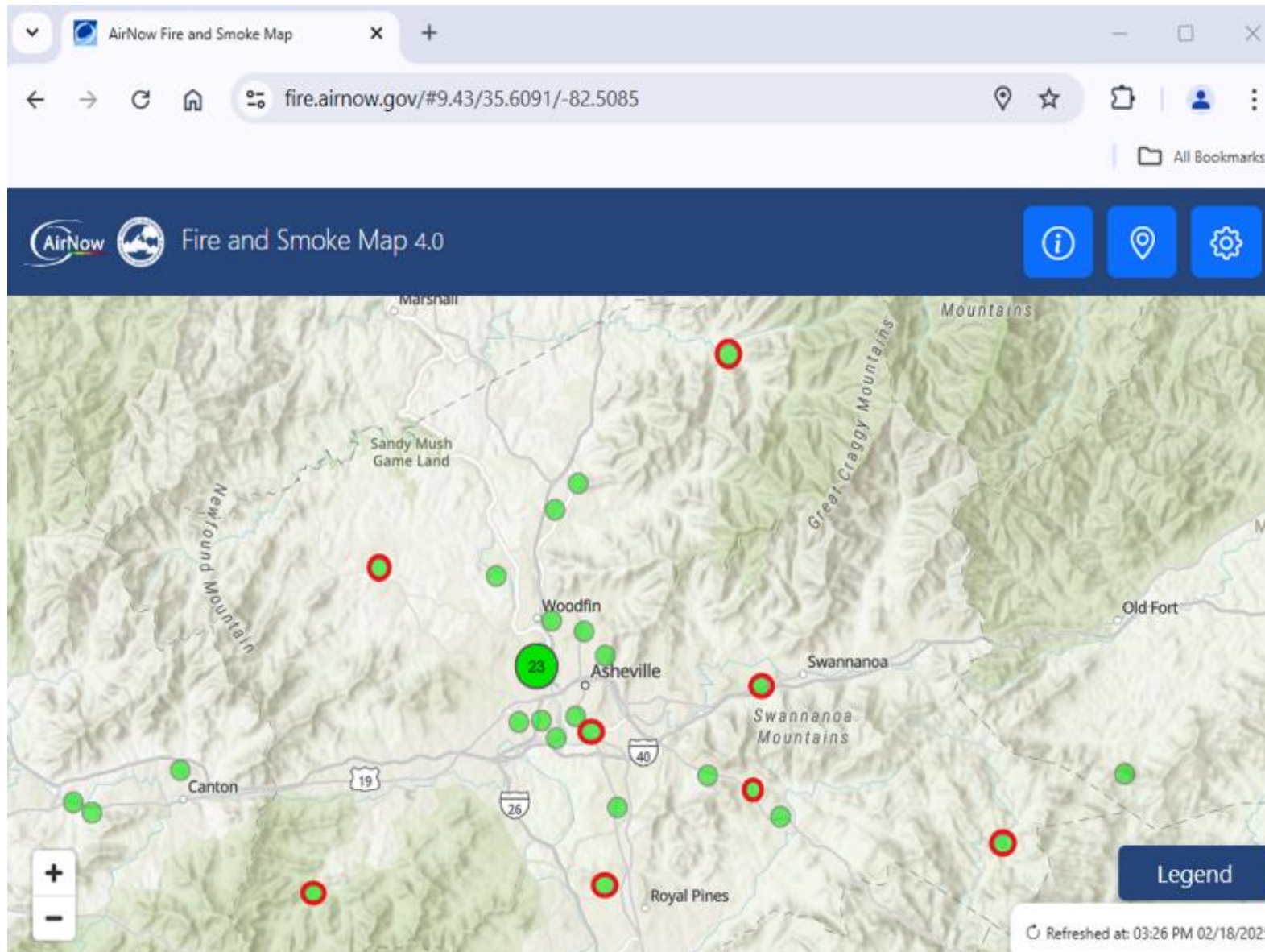


Helene-AB Air Quality Response

- Deployed additional non-regulatory PM2.5 monitors and sensors
- Demolition and Asbestos Removal Permits
- Air Curtain Incinerators/Open Burning of Storm Debris
- Guidance Documents on website
- Neighborhood and Built Environment Workgroup



Check EPA Fire and Smoke Map (fire.airnow.gov) for real-time air quality conditions.



Low-cost sensors installed after Helene by AB Air Quality highlighted in RED

Sensors and 2 additional monitors Provided by NCDQA and EPA

EBAMs



Fairview Elementary



ARO

Purple Airs cont.



Skyland Library



Broad River FD

Disaster Debris



North Carolina Disaster Recovery Act allows open burning and use of air curtain incinerators for storm debris removal

Have received 5 notifications to use air curtain incinerators and 3 requests for permission for storm debris open burning

Approximately 50% increase in open burning complaints since Helene (limited data)

State and Federal Rules for Commercial and Industrial Solid Waste Incineration and Other Solid Waste Incineration Units (CISWI and OSWI)

Air Curtain Incinerator Locations

Buncombe County ACI locations

Last edit was 3 minutes ago

 Add layer  Share  Preview

ACI Locations

 Individual styles

 North End Stump and Brush

 Riverside Stump Dump

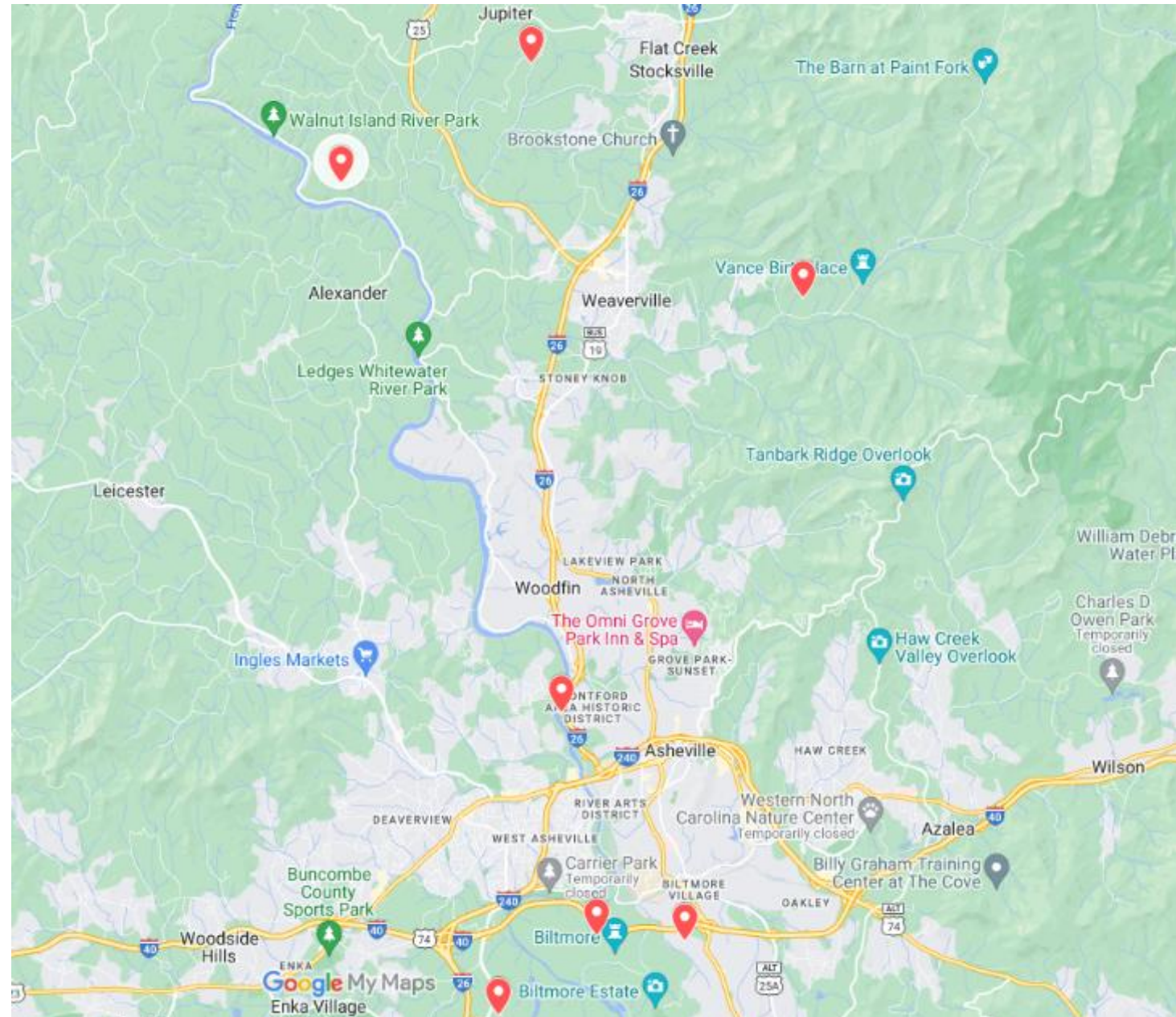
 SDR Town of Weaverville

 Biltmore Estate SawMill

 Biltmore Estate Stump Dump

 Biltmore Estate Brevard Road

 Buncombe County Landfill



EPA No Action Assurance Letter

- Issued on November 21, 2024
- Allows ACIs with capacity greater than 35 tons per day to operate in North Carolina without first obtaining a Title V Permit through March 1, 2025 provided that:
 - The owner/operator notifies the EPA Region 4 (see below for notification contact) prior to initiation of the use of a new ACI subject to the Title V permitting under CISWI
 - Owners/operators comply with all other applicable CISWI requirements, including opacity limits, monitoring, testing, and recordkeeping and reporting.
 - Owners/operators comply with all conditions imposed by State or local authorities on these emergency operations.




M30-6

678-855 1723
@burnDebris.com





 AirBurners





Demolition Permits and Asbestos Requirements

- Demolition/Asbestos Permits-Residential and Commercial
 - 273 applications since Helene (up from 193 over previous year)
- National Emissions Standards for Hazardous Air Pollutants for Asbestos (40 CFR Part 61 Subpart M)
 - Coordinating with USACE, FEMA, County to ensure requirements are met
- Recommend survey on all structures prior to demolition/renovation (pre 1980 materials asbestos common)



Questions?

www.abairquality.org

828-250-6777

airquality@buncombecounty.org