



# Sustainability Update

*Presented by*

Jeremiah LeRoy

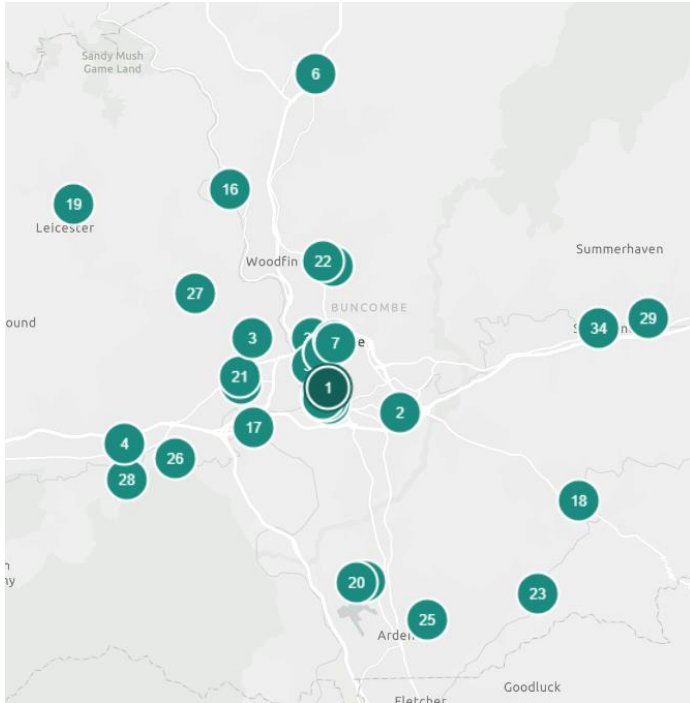
Sustainability Office



# Where We've Been



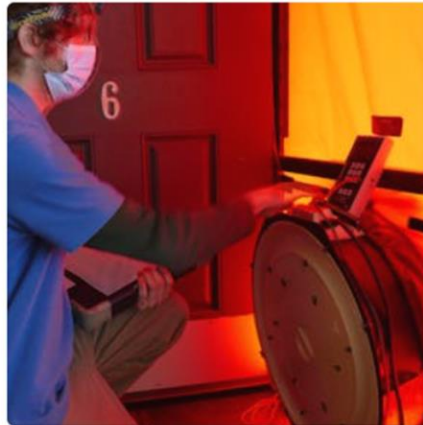
# Solar Projects



# Residential Campaigns



## Top solutions



### Energy Audit

Conservation Pros Inc

Energy Audit

Incentives



### HEAT PUMP SYSTEMS

Bolton Services of WNC

Heat Pump Cooling and Heating

Incentives



### EV Charger Installation

Jeromy Fowler Electric

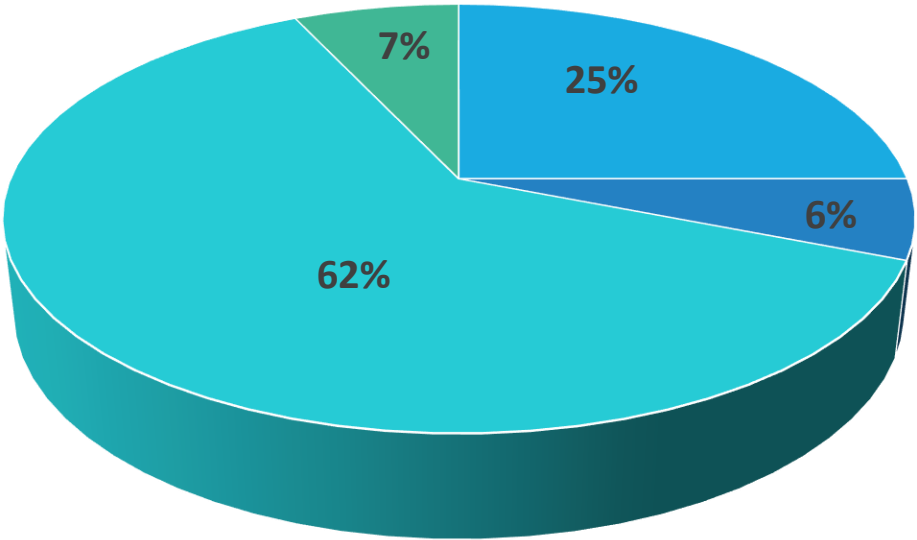
EV Charging Station

Incentives



# Current State of the Goal

Progress to Date



■ Woodfin Landfill ■ Rooftop Projects ■ Left to Meet 100 ■ Duke

## Total Consumption:

- Electricity
- Natural Gas
- Vehicle Fuels

**= 20MW of Energy**

County Total Consumption ~42,000 MWH

## THE GAP

**~26,000 MWH**



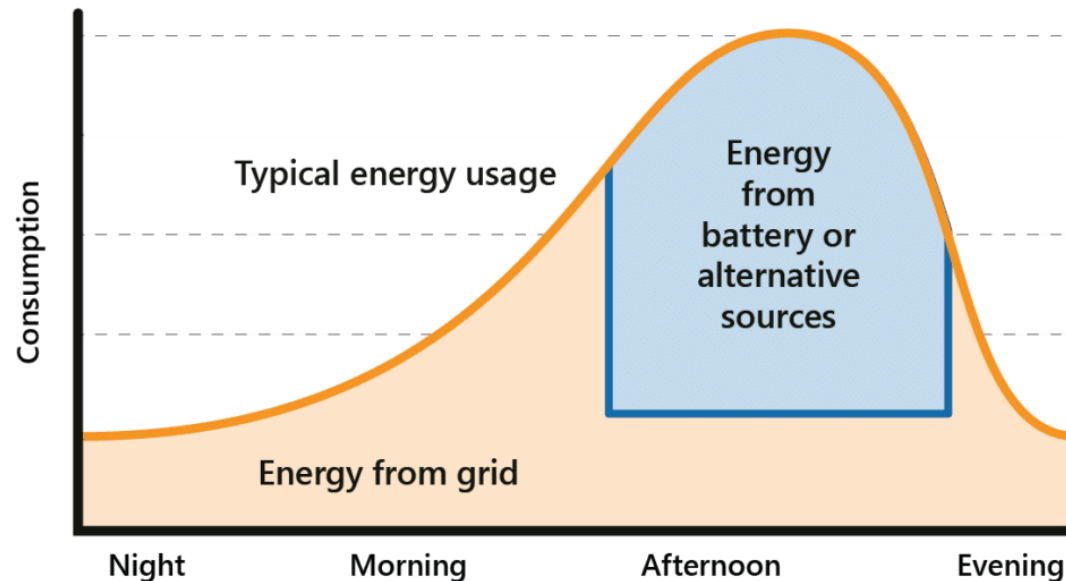
# Where We're Going



# Maximizing Renewables

Peak demand shaving/ load shifting are strategies to reduce electricity consumption during peak demand periods by using on-site energy storage and reducing costs.

Pilot Projects: PSTC, 40 Coxe



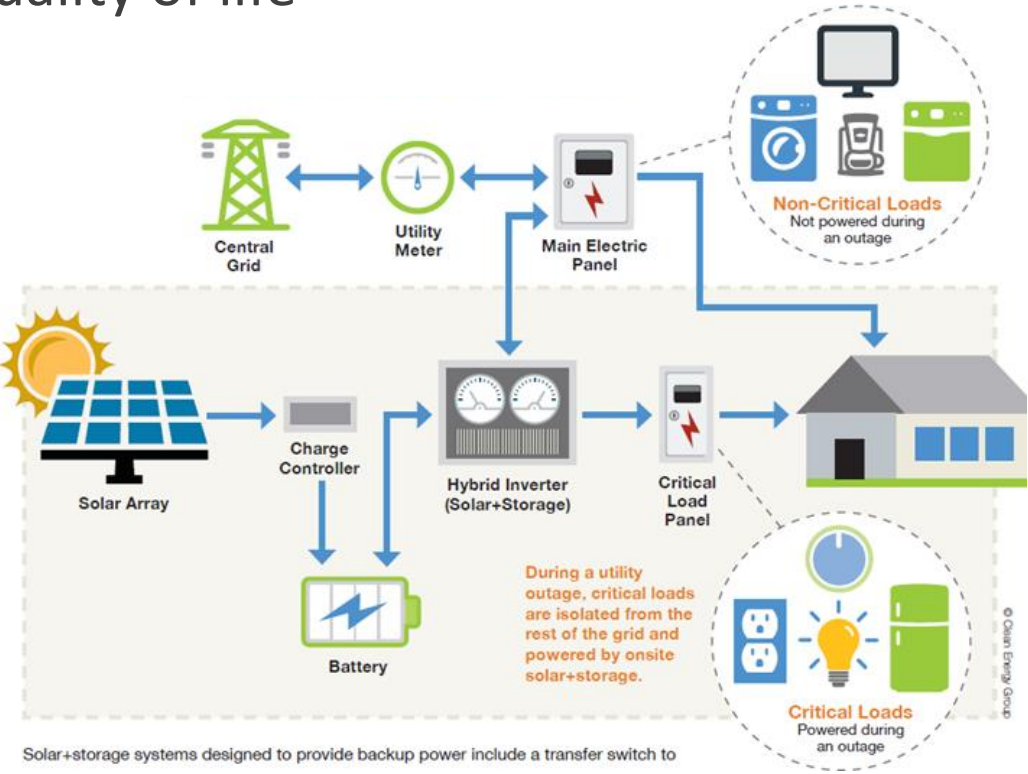
kWh Energy Charge:

10.078¢ per On-Peak kWh  
4.473¢ per Off-Peak kWh  
2.736¢ per Discount kWh

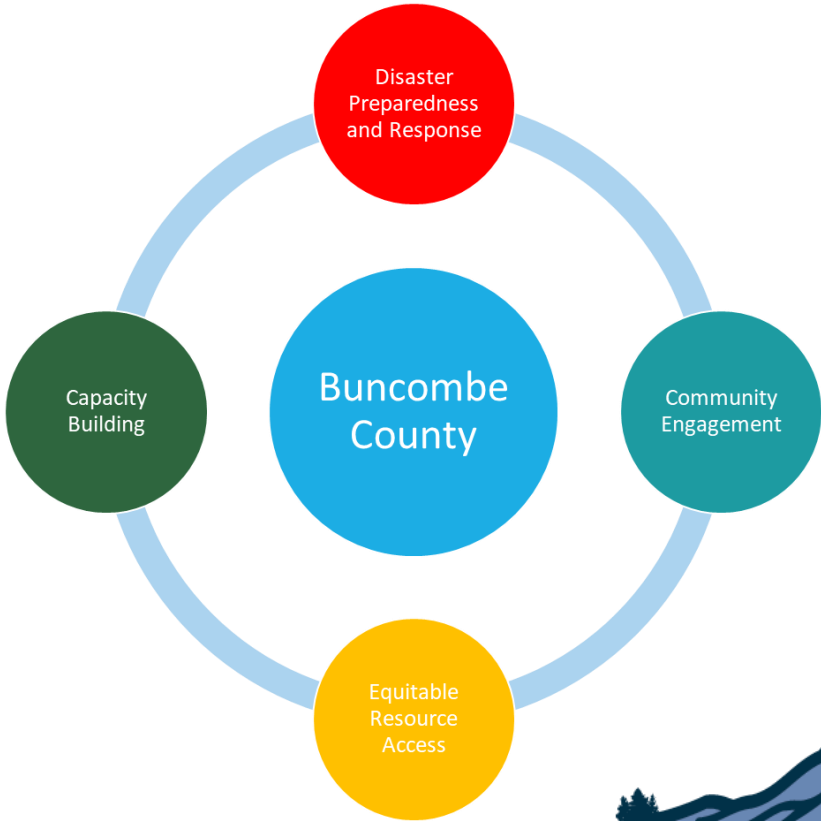


# Resource Center Operations

**What does this look like?** Community-serving facilities augmented to support residents, coordinate communication, distribute resources, and reduce carbon pollution while enhancing quality of life



Solar+storage systems designed to provide backup power include a transfer switch to





# Resilient Buildings & Resource Centers



## Features

- Renewable energy
- Energy storage
- Water storage
- Enhanced air filtration
- Backup generators
- Examples: E. AVL Library, 35 Woodfin, Fleet Facility, HHS



# Resilient Communications



## Tower Projects

- Solar
- Wind
- Energy Storage




# Residential Resilience

## Portable Solar Generator

Electrify Asheville-Buncombe partnered with Nature's Generator to provide group-discount pricing on this portable solar generator to provide quiet clean energy when and where you need it. This unit delivers 1800 watts of clean, renewable energy, ideal as a portable power station for home battery backup, RV trips, camping, or on-the-go. No initial assessment needed. Click through to learn more and purchase at a great discount.

[Learn More & Purchase Now](#)


**Solar + Battery**

Generate your own clean energy, become more energy independent, and save money with Solar + Battery



**Standalone Battery Storage**

Power your essentials with a home battery



**Solar Generators**

Portable Solar Generators are the perfect solution to weather power outages, use when camping, traveling, and more

## Home Energy Resilience Cooperative Public Information Session

Speak with members of Electrify Asheville-Buncombe and local contractor partners to learn about our Home Energy Resilience Cooperative!

**Location: East Asheville Library, 3 Avon Rd**

**Date: April 9th**

**Time: 4:30pm to 6:30pm**

**RSVP Using the link in our bio**

# Resilient Transportation

## Bidirectional Charging

Vehicle to  
load (V2L)



Vehicle to  
vehicle (V2V)



Vehicle to  
home (V2H)



Vehicle to  
grid (V2G)



# Funding Opportunities

- Community Development Block Grants-DR (HUD)
- Hazard Mitigation Grant Program (FEMA)
- Energy Efficiency & Conservation Block Grant (DOE)
- Other grants/ partnerships

CDBG-DR funds must be used for:

*“...necessary expenses related to disaster relief, long-term recovery, restoration of infrastructure and housing, economic revitalization, and mitigation...”*



# Discussion

