

# Goal Setting

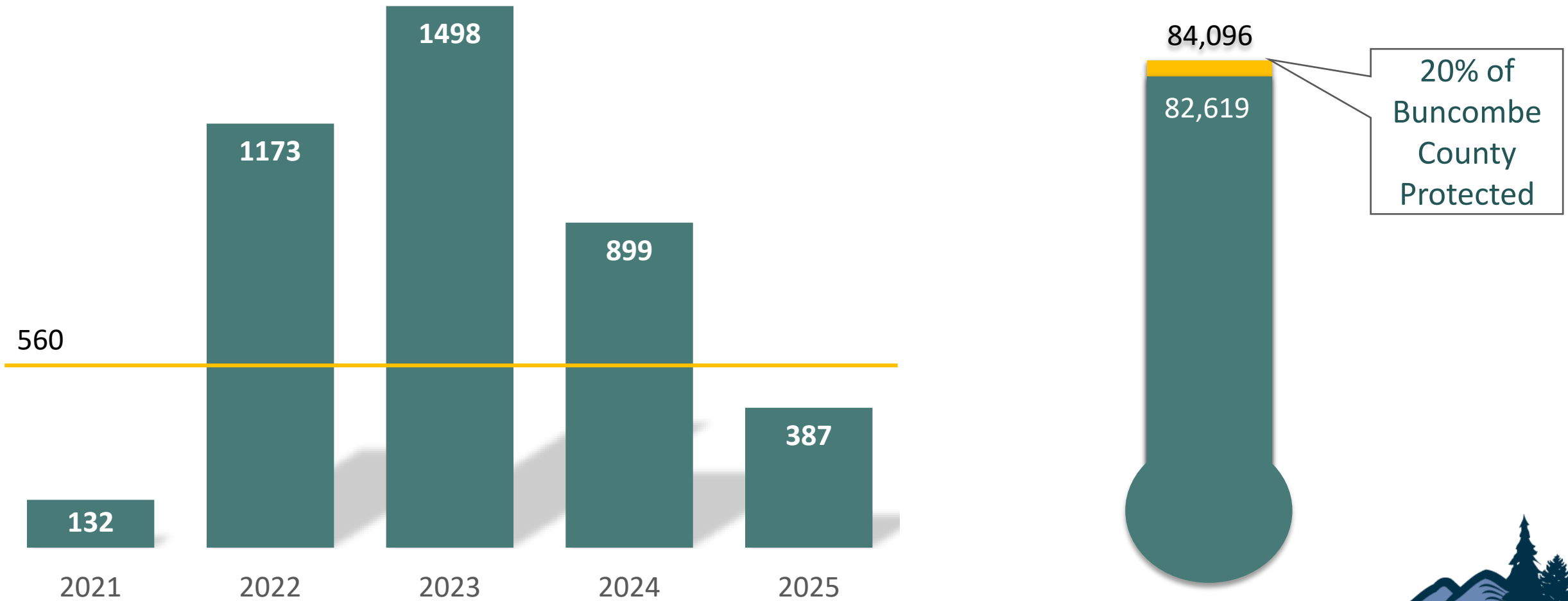
**Buncombe County: 420,480 acres**  
**Currently Protected: 78,530 acres**  
**(18.7%)**

**20% = 84,096 acres**  
**Need 1.3% = 5,566 acres**



# Preserving Open Space

## Conserved Lands



# 2030 Strategic Plan Goal Decision Point

- Set an acreage goal instead of a percentage
  - Buncombe County is comprised of **420,480 acres**
  - One percent equates to **4205 acres**
- Suggest: initiating **700 acres/year** or **3,500 acres** in 5 years
- Resulting in **87,595 acres** under permanent protection



# Open Space Bond Funds

<b>Authorized Bond Amount</b>	<b>\$30,000,000</b>
<b>Current Board of Commissioners-approved commitments</b> <ul style="list-style-type: none"> <li>• Woodfin Greenway (\$1,273,250)</li> <li>• Parham-Fortner Farm (\$150,000)</li> <li>• Lake Eden Preserve (\$250,000)</li> <li>• Ferry Road Open Space (\$3,000,000)</li> <li>• Deaverview Mountain (\$7,671,764)</li> <li>• Okoboji Farm (\$511,500)</li> </ul>	<b>\$12,856,514</b>
<b>Recently Approved</b> <ul style="list-style-type: none"> <li>• Sandy Hollar, Kestrel Herb Farm, Battle Forest and AGZ</li> </ul>	<b>\$3,739,943</b>
<b>Anticipated Commitments</b> <ul style="list-style-type: none"> <li>• Enka Heritage Trail (\$2,000,000)</li> <li>• Pending Conservation Easements (\$1,305,800)</li> </ul>	<b>\$3,305,800</b>
<b>Projected Remaining Balance</b>	<b>\$10,097,743</b>



# Emergency Watershed Protection (EWP)

Buncombe County residents with damage or severe streambank erosion from Helene causing a threat to infrastructure could be eligible for the USDA EWP Program

EWP Assists with:

- Debris-clogged waterways and floodplain
- Unstable streambanks

To Date:

- 259 Site Visits Completed
- 61 Initial Applications Submitted for Review
- 118 Sites Determined to be Ineligible
- Anticipate 350 – 400 Site Visits
- Damage Self-Report Tool Used to Collect Data



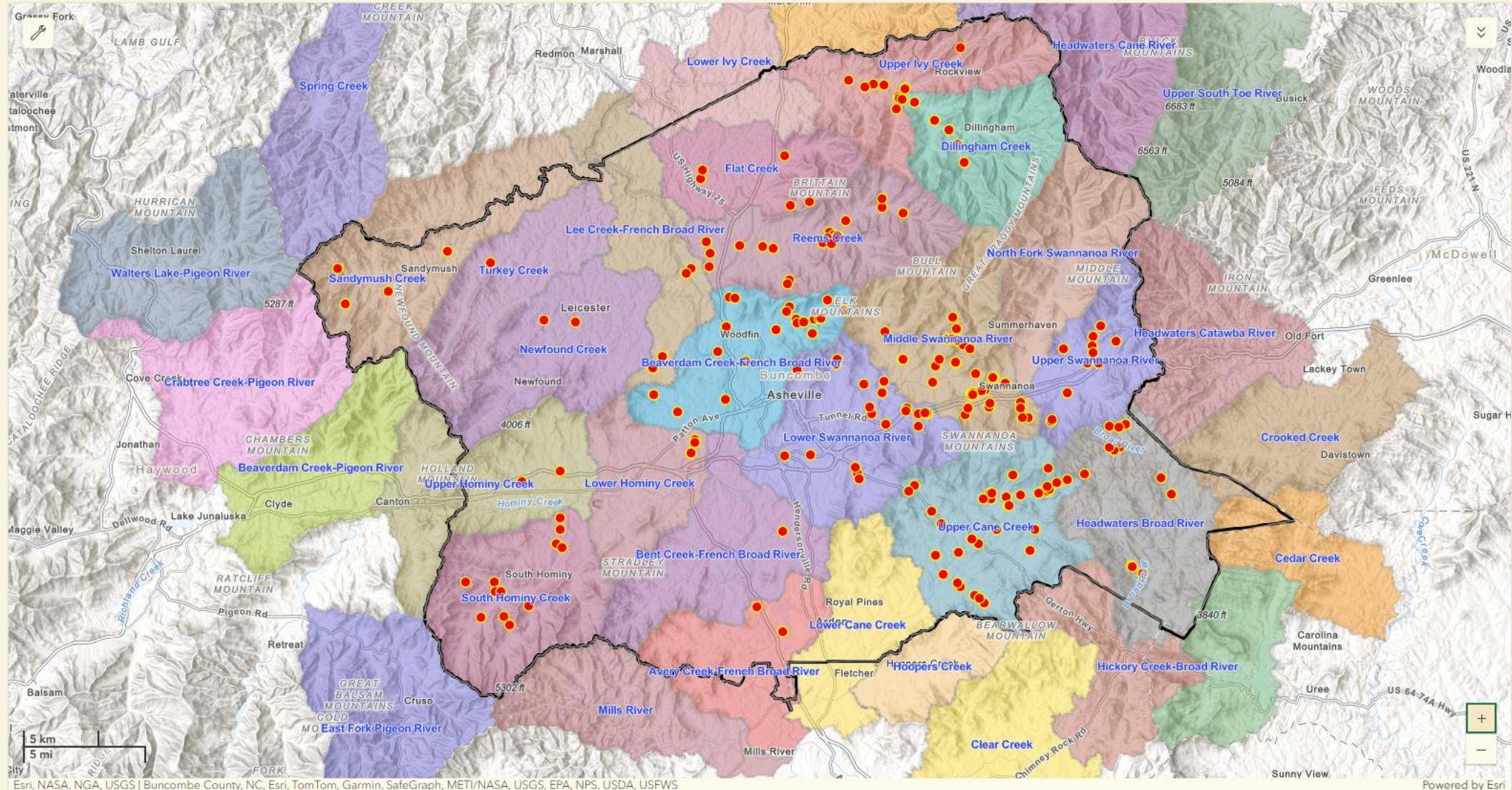
# Helene FDR Assessment Dashboard

Filter HUC 12 Watershed  
None

Filter By Township  
None

Filter by Local Name  
No category selected

Filter by Site ID  
No category selected



Total # of Surveys

# 218

1 of 50

EWP Survey - BC Ag and Land: 7

