



# GAME NOTES

# CLEMSON SOFTBALL

#TEAM3

## GAMES 15: CLEMSON TIGERS (11-3) VS. GARDNER-WEBB (6-8)

TUESDAY, MARCH 1 AT 5 P.M.

MCWHORTER STADIUM • CLEMSON, S.C.

### THIS WEEK

- **Tuesday, March 1**  
- No. 15/9 Clemson vs. Gardner-Webb - 5 p.m.
- **Friday, March 4**  
- No. 15/9 Clemson vs. No. 7/7 Virginia Tech - 5 p.m.
- **Saturday, March 5**  
- No. 15/9 Clemson vs. No. 7/7 Virginia Tech - 1 p.m.
- **Sunday, March 6**  
- No. 15/9 Clemson vs. No. 7/7 Virginia Tech - 12 p.m.
- **Where** - McWhorter Stadium - Clemson, S.C.
- **Watch** - Tuesday's game is available to watch on ACCNX with Nathan McCreary and Scott Whitlock on the call. Friday's game will be broadcast on ACC Network. The final two games against VT are available to watch on ACCNX.
- **Live Stats** - ClemsonTigers.com/softball/schedule
- **Social Media** - ClemsonSoftball

### CLEMSON OVERVIEW

- Clemson returns 21 players from last season to the 2022 roster and added eight newcomers.
- Last week, Clemson posted a perfect week going 5-for-5 with wins at Charlotte, over Boston U, Akron and St. Francis.
- The Tigers are batting .310 as a team with a .497 slugging percentage and .392 on-base percentage. Clemson has 111 hits.
- Clemson's pitching staff is posting a 1.46 ERA through 91 innings of work and struck out a combined 85 batters.

### GARDNER-WEBB OVERVIEW

- Gardner-Webb is led by first year head coach Bailey Wigness.
- As a team, the Runnin' Bulldogs are batting .237 with 89 hits, 53 runs and 45 RBIs. Defensively, Gardner-Webb posts a 4.02 ERA through 99.1 innings of work, has allowed 103 hits with 69 strikeouts.
- Leading the offense is Andrea Lyon who is batting .417 with 20 hits, a .604 slugging percentage and 14 RBIs. In the circle, Sydney Gilbert holds a 2.43 ERA through 31.2 innings with 25 strikeouts and a 3-3 record.

### VIRGINIA TECH OVERVIEW

- Virginia Tech is led by fourth year head coach Pete D'Amour.
- The Hokies are hitting .265 with 90 hits, 50 runs and 48 RBIs. In the circle, the team has a 1.19 ERA with three shutouts, 147 strikeouts and are limiting opponents to a .141 average.
- Cameron Fagan leads the Hokies from the plate with a .432 average with 19 hits and nine runs. In the circle, Keely Rochard and Emma Lemley hold a 1.11 ERA or lower with a combined 138 strikeouts through 77.2 innings.

### QUICK HITS

- Clemson has outscored opponents this season 74-26.
- The Tigers have run-ruled five opponents this season: FGCU, Kent State, LIU, Texas Tech and Boston U.
- Clemson has 111 hits through 14 games, including posting 21 doubles and 12 home runs.
- The Tigers have posted 66 RBIs this season led by Marissa Guimbarde (12), Valerie Cagle (12) and Alia

Logoleo (11).

- When Clemson scores in the first inning, the Tigers are 5-0. The Tigers have scored 15 runs in the first inning.
- The Tigers are 10-1 when scoring first this season no matter what inning

### THE NATIONALLY RANKED TIGERS

- Clemson received its first single-digit ranking in program history clocking in at No. 9 on the ESPN/USA Softball poll last week.
- The Tigers were ranked No. 15 on the USA Today/NFCA poll for the third week in a row.
- D1Softball.com has the Tigers at No. 13, and Softball America has Clemson ranked No. 12.
- Last season, Clemson climbed as high as No. 10 by ESPN/USA Softball and finished No. 17 last season.

### STANDOUT MOMENTS

- Opening weekend, Clemson only played 23 innings after run-ruling opponents in three games - two during the fifth inning and one in the sixth.
- Sophomores Regan Spencer and Millie Thompson threw Clemson's first combined no-hitter against Kent State, a five-inning run-rule victory.
- Clemson won all-four games of the Clemson Classic to move to an 20-game home winning streak dating back to March 27, 2021 against Duke.
- Sophomore McKenzie Clark hit the program's first inside the park home run against Akron on Feb. 26 dropping a ball into right center. She crossed home two steps ahead of throw reaching the plate.
- Freshman Aby Vieira recorded her first collegiate home run with a grand slam out of right center against Akron. The grand slam was Clemson's first of the season.
- Freshman Maddie Moore hit her first collegiate homer on Saturday as well with a two-run shot out of left field.

### NEWCOMERS IN THE LINEUP

- The Tigers have had four newcomers appear in the starting lineup, including two that started every game: freshman Maddie Moore and graduate transfer Sam Russ.
- Russ serves as Clemson's leadoff batter and left fielder while Moore is Clemson's starting shortstop.
- Freshmen Brooke McCubbin and Aby Vieira also made appearances in the starting rotation.
- McCubbin has pitched 20 innings throughout the year, including starting and pitching 5.1 against Northwestern.
- Vieira has started behind the plate in seven games. She caught Regan Spencer and Millie Thompson's combined no-hitter and was the catcher in Clemson's upset victory against Washington.
- Rachel Gibson has also appeared in the circle for the Tigers.

### CAGLE CALLS GAME

- Redshirt sophomore Valerie Cagle has been the driving force behind Clemson softball.
- Prior to 2022, Cagle was named a Preseason First Team All-American by D1Softball and Softball America.
- At the St. Pete/Clearwater Elite Invitational, Cagle opened the weekend with a five-inning run rule victory over Texas Tech.

### CLEMSON AT A GLANCE

Overall Record:	11-3
ACC Record:	0-0
Home Record:	4-0
Away Record:	2-0
Neutral Record:	5-3
Streak:	W6
Last 5 Games:	5-0
Last 10 Games:	8-2
Day Record:	7-1
Night Record:	4-2

### HEAD COACH JOHN RITTMAN

Third Season at Clemson:	74-19 (.795)
ACC Record:	34-6 (.850)
21st Year Overall:	824-370-3 (.689)

### CLEMSON HISTORY

All-Time:	74-19
All-Time Record, Home:	41-6
All-Time Record, Away:	19-5
All-Time Record, Neutral:	14-8

### VS GARDNER-WEBB

All-Time:	N/A
Last Clemson Win:	N/A
Last Gardner-Webb Win:	N/A
Streak:	N/A

### VS VIRGINIA TECH

All-Time:	2-2
Last Clemson Win:	5/14/21, Clemson 2, Virginia Tech 0
Last Virginia Tech Win:	2/19/21, Virginia Tech 4, Clemson 1
Streak:	W1

\*Note: A full 2022 schedule is available on the second page  
 \*Note to media members: Credential requests for home games at McWhorter Stadium open on the preceeding Monday of each game. Requests can be made at ClemsonTigers.com/softball under Media Resources.

Stats and notes are updated going into series only

# NOTES

## 2022 SCHEDULE

Date	Day	Opponent (Rank)	Watch	Time/Result
2-10	Thu	\$ at FGCU	Youtube	W, 11-0 (5)
2-11	Fri	\$ Kent State	N/A	W, 8-0 (5)
2-11	Fri	\$ Texas	N/A	L, 0-4
2-12	Sat	\$ LIU	N/A	W, 8-0 (6)
2-13	Sun	\$ Boston College	N/A	Canceled
2-17	Thu	% Texas Tech	ACCN	W, 8-0 (5)
2-18	Fri	% Tennessee	ESPN+	W, 4-3 (9)
2-19	Sat	% Northwestern	ACCN	L, 0-7
2-19	Sat	% Wisconsin	ESPN+	L, 1-2 (8)
2-20	Sun	% Washington	ESPNU	W, 2-0
2-23	Wed	at Charlotte	ESPN+	W, 5-2
2-25	Fri	# Boston University	ACCNX	W, 8-0 (5)
2-25	Fri	# St. Francis	ACCNX	W, 2-0
2-26	Sat	# Akron	ACCNX	W, 10-5
2-26	Sat	# Boston University	ACCNX	W, 7-3
3-1	Tue	Gardner-Webb	ACCNX	5 p.m.
3-4	Fri	* Virginia Tech	ACCN	5 p.m.
3-5	Sat	* Virginia Tech	ACCNX	1 p.m.
3-6	Sun	* Virginia Tech	ACCNX	12 p.m.
3-9	Wed	Mercer	ACCNX	6 p.m.
3-12	Sat	! Liberty	ACCNX	1:30 p.m.
3-12	Sat	! Illinois	ACCNX	4 p.m.
3-13	Sun	! Illinois	ACCNX	12:30 p.m.
3-13	Sun	! Liberty	ACCNX	3 p.m.
3-16	Wed	Winthrop	ACCNX	6 p.m.
3-18	Fri	* at Duke	ACCNX	6 p.m.
3-19	Sat	* at Duke	ACCNX	2 p.m.
3-20	Sun	* at Duke	ACCN	2 p.m.
3-23	Wed	at Georgia	SECN	6 p.m.
3-25	Fri	* Louisville	ACCNX	6 p.m.
3-26	Sat	* Louisville	ACCN	5 p.m.
3-27	Sun	* Louisville	ACCNX	12 p.m.
3-30	Wed	South Carolina	ACCN	7 p.m.
4-1	Fri	* at North Carolina	ACCNX	6 p.m.
4-2	Sat	* at North Carolina	ACCNX	2 p.m.
4-3	Sun	* at North Carolina	ACCNX	1 p.m.
4-6	Wed	Furman	ACCNX	4 p.m.
4-6	Wed	Furman	ACCNX	6 p.m.
4-8	Fri	* at Pittsburgh	ACCN	5 p.m.
4-9	Sat	* at Pittsburgh	ACCNX	1 p.m.
4-10	Sun	* at Pittsburgh	ACCNX	12 p.m.
4-12	Tue	at South Carolina	ESPNU	6 p.m.
4-14	Thu	* Notre Dame	ACCNX	6 p.m.
4-15	Fri	* Notre Dame	ACCNX	6 p.m.
4-16	Sat	* Notre Dame	ACCNX	1 p.m.
4-21	Thu	* at Florida State	ESPN2	9 p.m.
4-22	Fri	* at Florida State	ACCN	6 p.m.
4-23	Sat	* at Florida State	ACCN	2 p.m.
4-27	Wed	ETSU	ACCNX	6 p.m.
4-29	Fri	* Georgia Tech	ACCNX	6 p.m.
4-30	Sat	* Georgia Tech	RSN	1 p.m.
5-1	Sun	* Georgia Tech	ACCNX	12 p.m.
5-11 - 5-14		^ ACC Championship	ACCN	TBA
5-19 - 5-22		& NCAA Regionals	TBA	TBA
5-26 - 5-29		& NCAA Super Regionals	TBA	TBA
6-2 - 6-9		& NCAA Women's College World Series	TBA	TBA

Note: Home games in **bold**; all times are Eastern  
 \* - ACC regular-season game  
 \$ - FGCU Kickoff Classic (Fort Myers, Fla.)  
 % - St. Pete/Clearwater Elite Invitational (Clearwater, Fla.)  
 # - Clemson Classic (Clemson, S.C.)  
 ! - Tiger Invitational (Clemson, S.C.)  
 ^ - ACC Championship (Louisville, Ky.)  
 & - NCAA Tournament (Oklahoma City, Okla.)



- She followed the TTU game with a nine inning performance in the circle to defeat No. 18/15 Tennessee. She struck out 13 batters en route to earning the victory.
- Saturday, she pitched the final two innings in Clemson's loss to Wisconsin. Less than 14 hours after the loss, Cagle stepped into the circle against Washington.
- Cagle threw a complete-game shutout against the No. 6/5 Huskies with 10 strikeouts and hit a solo homer in the sixth inning to upset Washington.
- Last week, Cagle finished with six hits, including two doubles, and two RBIs. She was walked four times.
- During opening weekend, Cagle posted a team-high .538 average and 1.077 slugging percentage and .571 on-base percentage.
- Cagle recorded seven hits, including one double and two home runs. She brought in eight RBIs and scored three runs.
- Cagle's most memorable hit from opening weekend was her walk-off two-run homer in the bottom of the sixth inning against LIU to cap the Tiger's eight-run inning.
- To start the 2022 season, Cagle also pitched 7.0 innings with eight strikeouts in two games.
- Entering the Gardner-Webb game, Cagle is on an eight game reached base streak.
- Last season, Cagle became the first softball player in ACC history to be named both the Player and Freshman of the Year.
- She was named a NFCA Second Team All-American, a NFCA National Freshman of the Year Top-3 finalist and a USA Softball Collegiate Player of the Year Top 10 Finalist last season.

### TOP 25 VICTORIES

- The Tigers defeated two top 25 programs at the St. Pete/Clearwater Elite Invitational in No. 18/15 Tennessee an No. 6/45 Washington.
- Clemson took Tennessee to nine innings en route to earning the 4-3 win with six players recording a hit, including Marissa Guimbarda hitting a solo blast out of left field.
- JoJo Hyatt also came up with a huge hit to score two runs and keep Clemson alive in the game, while Cammy Pereira, Alia Logoleo and Maddie Moore each tallied a run.
- Clemson picked up its first top-10 victory defeating the No. 6/5 Washington Huskies in seven innings on the final day of the 2022 St. Pete/Clearwater Elite Invitational.
- Valerie Cagle threw a complete 7.0 inning game, picking up 10 strikeouts and limiting the Huskies to only four hits.
- Marissa Guimbarda sparked the Tiger offense in the second inning hitting a leadoff double into right center. Maddie Moore came in to run for her.
- With two outs, Alia Logoleo stepped up and hit a single to score Moore and get Clemson on the board.
- Cagle also recorded a solo home run in the sixth inning to double the Tigers' score.
- The win was Clemson's first seven-inning win this season and handed the Huskies their first loss.

### GUIMBARDA GREATNESS

- Graduate Marissa Guimbarda has been a key contributor to Clemson's offense over the past three seasons.
- Prior to her time in the Orange and Regalia, Guimbarda played two seasons at Furman.
- Most recently, Guimbarda hit her 50th and 51st career home run in back-to-back games against Charlotte and Boston U. She is currently ranked fifth among action players in the NCAA for most home runs in her career.
- She tallied 24 while at Furman and has hit 27 at Clemson.
- Guimbarda becomes the 196th player in NCAA Division

I history to hit 50 homers during her collegiate career.

### RUSS' RECORDS

- Graduate transfer Sam Russ comes to Clemson to use her final year of eligibility that was awarded due to COVID-19 cutting the 2020 season short.
- Russ decided to use her extra year at Clemson after her father played baseball for the Tigers 1980-83.
- Russ spent her first four years at NC State where she was a three-time ACC selection and holds the Wolf-pack's record for both career (103) and single season (32) stolen bases.

### RUSS CAREER MILESTONES

Category	Next Milestone	Needed	Career Total
At-bats	550	3	547
Runs	150	14	136
Hits	200	26	174
RBI	75	19	56
Walks	100	15	85
Stolen Bases	125	15	110

Includes both Clemson and NC State totals

### ACC PRESEASON HONORS

- The Tigers have been picked to finish second in the ACC
- Clemson pitcher Valerie Cagle and outfielder McKenzie Clark were named to the 2022 Preseason All-ACC Team based on vote by the league's head coaches.
- Cagle returns after being named the ACC Player and Freshman of the Year in 2021. She batted .404 with a .821 slugging percentage and 17 home runs. She also led the Tigers with a 1.16 ERA and 267 strikeouts.
- Clark had a breakout freshman season posting a .355 average and .639 slugging percentage. She stole a team-high 23 bases in 2021 and was an NFCA All-Region Selection.

### CONSISTENT CAMMY

- Cammy Pereira has been a consistent presence since signing to join Clemson's inaugural class being the Tigers' go-to face of the program in different situations.
- Pereira was recently recognized at the Clemson Board Meeting as a notable student-athlete having been the driving force to multiple Clemson initiatives including but not limited to: being the leader of the Tigers Unite affinity group CU Pride, spoken at several panels regarding issues in the LGBTQ community, participating in Clemson academic research, is a Paw Pal mentor and a student liaison for the We CU Committee for staff engagement.
- Following her time at Clemson, Pereira will attend medical school at Via College of Osteopathic Medicine beginning in July.
- Pereira became the third softball player at Clemson to be awarded the Weaver-James-Corrigan postgraduate scholarship by the ACC.
- On the field this season, Pereira has started every game at second base and is batting .385 with eight runs score and seven RBIs.

### JOJO "CLUTCH" HYATT

- Redshirt sophomore JoJo Hyatt came up with some of the biggest hits for Clemson at the SPCEI.
- In the opening game of the weekend against Texas Tech, Hyatt recorded the game-ending walk-off triple to score three runners with two outs in the fifth inning.
- The triple was the first of the season for Hyatt - second of her career.
- In the Tennessee game, Hyatt got the Tigers on the board with a two-RBI single in the second inning.
- Hyatt also was the runner that reached second when Tennessee's shortstop made the throwing error that

# NOTES

allowed the Tiger's to win in extra innings.

- Behind the plate at catcher, Hyatt kept the Tigers in the game against Wisconsin, fielding a squeeze bunt and tagging the runner coming home.
- Overall on the weekend, Hyatt let the team with a .375 average with three hits and five RBIs. She was also walked twice. Every plate appearance proved to be a vital part of the Tigers' offense.

## CLEMSON+

- Clemson Athletics and IPTAY have launched Clemson+, a streaming service dedicated to showing what it's like to be a Tiger.
- Clemson+ showcases the best video content, and is now available on all major streaming platforms, via the ClemsonTigers app and web browser.
- The subscription will be included as an exclusive benefit to more than 26,000 IPTAY and Collegiate Club members.
- Clemson softball will be apart of the initial launch of Clemson+ with a Clemson Softball All-Access feature.
- Get an inside look at the day-to-day aspects of the Clemson softball program and exclusive interviews with the coaching staff and student-athletes.

## POWER: WOMEN'S LEADERSHIP ACADEMY

- Director of Athletics Graham Neff and Senior Associate AD/Senior Woman Administrator Stephanie Ellison-Johnson announced the formation of the POWER: Women's Leadership Academy in early February.
- The women's leadership academy is a three-pronged women's leadership program with curriculum developed by Assistant AD for Student-Athlete Development Tori Niemann and Dr. Janna Magette Butler, Clemson Athletic Leadership Graduate Program Lecturer.
- The year-long program focuses on identity, professional presence, self-leadership and community, along with an annual experiential trip.
- The leadership summit is an opportunity for POWER participants to design, organize and execute a transformational leadership experience for their Clemson female student-athlete peers.
- Softball has two current student-athletes in Power's inaugural class: Morgan Johnson and Alia Logoleo.

## LEGACY - BLACK HISTORY MONTH

- February allows us to shine a spotlight on the many contributions, successes and challenges of African Americans at Clemson.
- Last summer, the Voices and Letters video series gave student-athletes, staff and coaches a platform to talk about their experiences.
- The next iteration will feature student-athletes and staff members talking about an inspirational Black person in their lives.
- Clemson softball's own Morgan Johnson's has penned a letter to Jackie Robinson about his influence and the impact he has had on her career in the sports community.
- Her feature is now live on ClemsonTigers.com on Thursday, Feb. 24. View it on the main page under "My Story."
- More features can be found on ClemsonTigers.com/bhm-2022

## HISTORICAL TIMELINE

- March 14, 2022 marks the five-year anniversary since former Clemson Director of Athletics Dan Radakovich announced the addition of the softball program.
- View part of the timeline of events in the provided table and the complete list on ClemsonTigers.com/softball.

## FALL ACADEMIC SUCCESS

- Clemson University student-athletes earned a 3.19 cumulative GPA in the Fall 2021 semester, the seventh

## CLEMSON SOFTBALL TIMELINE

Date	Note
3/14/17	Clemson announces addition of softball program
10/6/17	Softball stadium receives initial construction approval
11/3/17	John Rittman selected as program's first head coach
11/8/17	Clemson signs first softball signee
12/4/17	Kyle Jamieson joins softball staff
11/10/18	Courtney Breault joins softball staff
11/24/18	Jeannie Murphy joins softball staff
2/2/19	Clemson Softball Stadium breaks ground
7/9/19	Topping Out Ceremony
7/9/19	ACC and Big Ten announce Clemson as host site for 2020 Big Ten/ACC Challenge
8/26/19	Held first round of individual practices
9/17/19	Held first official team practice
9/30/19	Held first team practice on field of Clemson Softball Stadium
10/2/19	First scrimmage against Erskine College at Southern Wesleyan University
11/11/19	Clemson announces inaugural spring schedule
12/3/19	The team and coaching staff officially announce move into the facility full time
1/24/20	Ribbon-Cutting ceremony
1/25/20	Inaugural Fan Day
2/7/20	Clemson defeats St. John's, 6-2, in its inaugural game at UCF's Black & Gold Tournament in Orlando, Fla.
2/12/20	Clemson held its inaugural home opener in a doubleheader against Western Carolina - RHP Logan Caymol threw a complete game no-hitter in the nightcap for the Tiger's first no-hitter in program history
2/15/20	Clemson defeated Maryland 21-2 at Clemson Softball Stadium - Bailey Taylor and Valerie Cagle hit grand slams in the bottom of the second to make Clemson the seventh program in NCAA Division-I history to record at least two grand slams in a single inning
2/18/20	Valerie Cagle and Logan Caymol swept ACC Player and Pitcher of the Week awards, respectively. It was the only instance in which two freshmen won both awards in the same week.
3/1/20	Clemson won its first-ever ACC series sweeping Virginia at the Clemson Softball Stadium
3/3/20	Clemson received first votes in national poll - 10 from NFCA
3/12/20	NCAA announced cancellation of season due to COVID-19 - Clemson's inaugural season ends with a 19-8 record
2/5/21	Clemson University Board of Trustees announced the renaming of Clemson Softball Stadium to McWhorter Stadium
2/21/21	Clemson won its first true road series and first-ever ACC road series in a 3-0 sweep at Georgia Tech
3/1/21	Clemson received its first top-25 ranking at No. 15 according to D1Softball.com
3/9/21	Clemson cracked NFCA poll for the first time at No. 25
3/27/21	Clemson earned highest ranked win against then-No. 11 Duke live on ACC Network. Clemson snapped Duke's then-20 game winning streak, the second-longest winning streak by any D1 softball team at that point.
4/21/21	Clemson shutout in-state rival South Carolina, 6-0, in Columbia in first ever meeting between both programs
5/9/21	In final game of the 2021 regular season, Clemson clinched the ACC regular-season title with a 19-2 win over Syracuse. The Tigers became the first team in league history to earn the regular-season title in any team's first complete season.
5/15/21	Clemson made its first appearance in the ACC title game
5/16/21	Clemson secured its first NCAA Regional berth
5/21/21	Clemson secured its first NCAA Regional win in an 8-0 run-rule victory over Troy
2/7/22	Clemson receives its first preseason ranking being ranked in the top-15 by all major polls
2/20/22	Clemson upsets No. 6/5 Washington, 2-0, for the first win over a top-10 opponent

\*A full list of Clemson history can be found on ClemsonTigers.com

## TIGER TIDBITS

Category	Record
Record	11-3
ACC Record	--
Non-Conference Record	11-3
Versus Top 25 (NFCA)	1-2
Versus Top 10 (NFCA)	1-1
Versus Top 5 (NFCA)	--
In February	11-3
In March	--
In April	--
In May	--
On Monday	--
On Tuesday	--
On Wednesday	1-0
On Thursday	2-0
On Friday	4-1
On Saturday	3-2
On Sunday	1-0
In Day Games	7-1
In Night Games	4-2
In 1-Run Games	1-1
In 2-Run Games	2-0
In 5+ Run Games	6-1
After a Loss	2-1
After a Win	8-2
In Extra Innings	1-1
Shutouts	7-2
Scoring First	10-1
Scoring in the 1st Innings	5-0
Leading After 4	9-1
Trailing After 4	0-2
Tied After 4	2-0
Leading After 5	5-1
Trailing After 5	0-2
Tied After 5	2-0
Leading After 6	6-1
Trailing After 6	0-2
Tied After 6	--
Scoring 5 or More Runs	8-0
Allowing 5 or More	1-1
Out-hit opponent	10-1
Opponent out-hit	0-1
Hits are equal	1-1
Make 0 errors	6-0
Make 1 error	5-2
Make 2+ error	0-1
Opp. makes 0 errors	2-2
Opp. makes 1 error	4-0
Opp. makes 2+ errors	5-1

## MEDIA SERVICES

### CLEMSON ATHLETIC COMMUNICATIONS

Contact	Valerie Johnson (Central Michigan '18)
Email	vjohns4@clemson.edu
Cell Phone	712-269-4149
Ticket Office Phone	1-800-CLEMSON
Website	ClemsonTigers.com
Social Media	ClemsonSoftball

### ACC MEDIA RELATIONS

Justin Wilson is the softball athletic communications contact at the ACC office. He can be reached at 336.369.3713 or at jwilson@acc.org.

### CREDENTIALS

Members of the working press who desire a media credential to a Clemson softball home game ClemsonTigers.com/softball under Media Resources. There is limited space for writers inside McWhorter Stadium. Members of the media must request a pass at least 24 hours prior to each game to be considered for admittance.

### WEBSITE & SOCIAL MEDIA

Up-to-date stats, notes, stories and box scores can be found on Clemson's official website (ClemsonTigers.com). Live online video, live audio and live stats can be accessed on the ClemsonTigers.com softball schedule page. Fans can also follow ClemsonSoftball on Twitter, Instagram and Facebook.

# NOTES

consecutive semester greater than 3.0, and the third-highest ever.

- Clemson softball set a program-record 3.48 GPA in the fall of 2021.
- Clemson's department-wide graduation success rate (GSR) also hit a record of 95 percent in the most recent release.

## SEASON TICKETS SOLD OUT

- The Clemson community continues to show its unwavering support to the Clemson softball team through ticket sales.
- Season tickets were sold out prior to the New Year, and IPTAY members and the general public have done their part by snapping up single-game tickets during the first week of February when they went on sale.
- Tickets for every game during the regular-season at McWhorter recently sold out after limited tickets were left available.

## UPCOMING

- Clemson will open ACC play next week with a three-game series against No. 7 Virginia Tech beginning on Friday, March 4 at 5 p.m. on the ACC Network.

## ADDITIONAL MEDIA RESOURCES

- More information and a digital version of this set of game notes can be found by scanning the QR Code below:



## CLEMSON VS. RANKED TEAMS

2020						
Date	Opponent	CU NFCA, ESPN	Opp. NFCA, ESPN	W-L	Score	
2-26	Georgia	NR	14, 15	W	4-1	
2021						
Date	Opponent	CU NFCA, ESPN	Opp. NFCA, ESPN	W-L	Score	
2-18	* Virginia Tech	RV, N/A	14, 15	W	8-1	
2-19	* Virginia Tech <sup>(1)</sup>	RV, N/A	14, 15	L (5)	0-9	
2-19	* Virginia Tech <sup>(2)</sup>	RV, N/A	14, 15	L	1-4	
3-26	* Duke <sup>(1)</sup>	20, 21	11, 12	L	0-2	
3-26	* Duke <sup>(2)</sup>	20, 21	11, 12	L	1-3	
3-27	* Duke	20, 21	11, 12	W	4-1	
3-28	* Duke	20, 21	11, 12	W	4-2	
5-14	* Virginia Tech	13, 10	20, 20	W	2-0	
5-15	^ Duke	13, 10	21, 21	L	0-1	
5-22	! Alabama	13, 10	3, 3	L	0-6	
5-23	! Alabama	13, 10	3, 3	L	0-5	
2022						
Date	Opponent	CU NFCA, ESPN	Opp. NFCA, ESPN	W-L	Score	
2-11	Texas	15, 14	10, 8	L	0-4	
2-18	Tennessee	15, 12	18, 15	W (9)	4-3	
2-19	Northwestern	15, 12	RV, 23	L	0-7	
2-20	Washington	15, 12	6, 5	W	2-0	

**Bold** denotes home game  
 \* - ACC regular-season game; ^ - ACC Championship; ! - Regionals

Total	7-9
Home	4-4
Away	0-2
Neutral	3-3
Non-Conference	3-4
ACC Only	4-5

## LAST TIME..

OFFENSE	
Hit two HRs in a game	Valerie Cagle (vs. Troy, 5/21/21)
Hit three HRs in a game	Alia Logoleo (at Syracuse, 5/9/21)
Hit two HRs in an inning	
Hit grand slam	Aby Vieira (Akron, 2/26/22)
Leadoff HR [inning]	Marissa Guimbarada (Boston U, 2/25/22)
Walkoff HR	
Walkoff HR [run rule]	Alia Logoleo (Boston U, 2/25/22)
Pinch-hit HR	
Inside the Park HR	McKenzie Clark (Akron, 2/26/22)
HR in back-to-back games	Marissa Guimbarada (Charlotte 2/23, BU 2/25/22)
Back-to-back HRs	Valerie Cagle & Marissa Guimbarada (vs. Troy 5/21/21)
Two doubles in a game	Alia Logoleo (at Charlotte, 2/23/22)
Three doubles in a game	N/A
Two triples in a game	N/A
Hit for the cycle	N/A
Four hits in a game	McKenzie Clark (Akron 2/26/22)
Drove in five runs	Valerie Cagle (at Syracuse, 5/9/21)
Drove in six runs	Valerie Cagle (at FGCU, 2/10/22)
Drove in seven runs	N/A
Drove in eight runs	Valerie Cagle (Maryland, 2/15/20)
Drove in 10 runs	Alia Logoleo (at Syracuse, 5/9/21)
Scored four runs	Alia Logoleo (at Syracuse, 5/9/21)
Walkoff hit [non-HR]	JoJo Hyatt (vs Texas Tech, 2/17/22 -- triple)
Walkoff [non-hit]	Maddie Moore (vs Tennessee, 2/18/22 -- error)
Walkoff [pinch hitter]	
PITCHING	
Threw a no-hitter	Valerie Cagle (7.0 IP, Boston College, 4/18/21)
Threw a combined no-hitter	Regan Spencer & Millie Thompson (5.0 IP, vs. Kent State, 2/11/22)
Threw a perfect game	N/A
Threw a solo shutout	Regan Spencer (St. Francis, 2/25/22)
Had 14 strikeouts	Valerie Cagle (Georgia Tech, 5/13/21)
Had 13 strikeouts	Valerie Cagle (vs Tennessee, 2/18/22)
Had 12 strikeouts	Valerie Cagle (vs Villanova, 2/21/20)
Had 11 strikeouts	Valerie Cagle (Winthrop, 4/13/21)
Had 10 strikeouts	Valerie Cagle (vs No. 6/5 Washington, 2/20/22)
Pitched >7 innings	Valerie Cagle (9.0 IP, vs. Tennessee, 2/18/22)
TEAM	
Won 10 straight games	2021 (19: Mar. 27 - May 8)
Won 15 straight games	2021 (19: Mar. 27 - May 8)
Won 20 straight games	N/A
Extra-Innings victory	2/18/22, No. 15 Clemson 4, No. 18 Tennessee 3 (9 Inn.)
Extra-Innings loss	2/19/22, No. 15 Clemson 1, Wisconsin 2 (8 Inn.)
Played 11 innings	3/19/21, No. 23 Clemson 4, at Louisville 0
Played 10 innings	N/A
Played nine innings	2/18/22, No. 15 Clemson 4, No. 18 Tennessee 3
Played eight innings	2/22/20, Clemson 8, Stetson 6
Was no-hit	N/A
Was shut out	2/19/22, No. RV/23 Northwestern 7, No. 15 Clemson 0
Beat a ranked opponent	2/20/22, No. 15 Clemson 2, No. 6 Washington 0
Beat a top-10 opponent	2/20/22, No. 15 Clemson 2, No. 6 Washington 0
Beat a top-10 ACC opponent	N/A
Run-ruled a ranked opponent	N/A
Tied an opponent	N/A

## TEAM SUPERLATIVES

OFFENSE	
At bats	34, at Charlotte (Feb. 23)
Runs scored	11, at FGCU (Feb. 10)
Hits	13, at Charlotte (Feb. 23)
RBI	11, at FGCU (Feb. 10)
Doubles	6, at Charlotte (Feb. 23)
Triples	2, vs. Texas Tech (Feb. 17)
Home runs	2, 3x, Akron (Feb. 26)
Walks	7, 2x, Akron (Feb. 26)
Strikeouts	11, 2x, vs. Northwestern (Feb. 19)
Sac flies	1, at FGCU (Feb. 10)
Stolen bases	3, 3x, St. Francis (Feb. 25)
Hit by pitch	3, vs. Kent State (Feb. 11)
FIELDING	
Putouts	27, vs. Tennessee (Feb. 18)
Assists	14, St. Francis (Feb. 25)
Errors	3, vs. Northwestern (Feb. 19)
DPs turned	2, St. Francis (Feb. 25)
PITCHING	
Innings pitched	9.0, vs. Tennessee (Feb. 18)
Runs allowed	7, vs. Northwestern (Feb. 19)
Earned runs	4, vs. Texas (Feb. 11)
Walks allowed	4 at Charlotte (Feb. 23)
Strikeouts	13, vs. Tennessee (Feb. 18)
Hits allowed	10, vs Boston University (Feb. 26)

## PLAYER SUPERLATIVES

OFFENSE	
At bats	5, 2x, McKenzie Clark (vs. Tennessee - Feb. 18)
Runs scored	4, McKenzie Clark (at FGCU - Feb. 10)
Hits	4, McKenzie Clark (Akron - Feb. 26)
RBI	6, Valerie Cagle (at FGCU - Feb. 10)
Doubles	2, Alia Logoleo (at Charlotte - Feb. 23)
Triples	1, 5 times
Home runs	1, 12 times
Walks	3, Valerie Cagle (Akron - Feb. 26)
Strikeouts	3, Alia Logoleo (vs. Tennessee - Feb. 18)
Sac flies	1, Alia Logoleo (at FGCU - Feb. 10)
Stolen bases	2, 2x, Sam Russ (St. Francis - Feb. 25)
Hit by pitch	2, Bailey Taylor (vs. Kent State - Feb. 11)
FIELDING	
Putouts	13, JoJo Hyatt (vs. Tennessee - Feb. 18)
Assists	6, Valerie Cagle (vs. Tennessee - Feb. 18)
Errors	2, Maddie Moore (vs. Northwestern - Feb. 19)
PITCHING	
Innings pitched	9.0, Valerie Cagle (vs. Tennessee - Feb. 18)
Runs allowed	7, Brooke McCubbin (vs. Northwestern - Feb. 19)
Earned runs	4, Valerie Cagle (vs. Texas - Feb. 11)
Walks allowed	3, 2x, Millie Thompson (at Charlotte - Feb. 23)
Strikeouts	13, Valerie Cagle (vs. Tennessee - Feb. 18)
Hits allowed	9, Brooke McCubbin (vs. Northwestern - Feb. 19)

## WEEKLY POLLS

2022						
Date	W-L	NFCA	ESPN	D1	SA	
2-7	0-0	15	14	14	14	
2-15	3-1	15	12	13	14	
2-22	6-3	15	9	13	12	
3-1	11-3			13		
2021						
Date	W-L	NFCA	ESPN	D1	SA	
2-8	0-0	RV <sup>(9)</sup>	---	---	---	
2-15	2-0	RV <sup>(6)</sup>	RV	---	---	
2-22	6-2	RV <sup>(25)</sup>	RV	---	---	
3-1	9-2	RV <sup>(31)</sup>	RV	25	---	
3-8	13-2	25	RV	25	24	
3-15	16-2	23	25	25	22	
3-22	20-2	20	21	23	21	
3-29	22-4	18	19	23	20	
4-5	26-4	18	18	20	19	
4-12	26-4	17	18	19	19	
4-17	32-4	16	16	18	16	
4-26	37-4	13	13	15	13	
5-3	37-4	13	11	15	13	
5-10	40-5	13	10	16	13	
5-17	42-6	13	10	17	14	
6-10	44-8	18	17	19	22	

Note: Clemson's all-time rankings can be found in the Clemson softball record book.

# ROSTER

## NUMERICAL

#	Player	Pos.	B/T	Yr.	Ht.	Hometown	Previous School / High School
1	Rachel Gibson	RHP	R-R	Fr.	5-9	Ringgold, Ga.	Heritage HS
2	Brooke McCubbin	RHP/INF	R-R	Fr.	5-10	Locust Grove, Ga.	Locust Grove HS
3	Sam Russ	OF	L-R	+Gr.	5-8	Charlotte, N.C.	NC State / Providence Day HS
4	Aby Vieira	C/UTL	L-R	Fr.	5-9	Mission Viejo, Calif.	Mission Viejo HS
5	Ansley Houston	INF	R-R	So.	5-6	Grantville, Ga.	Newnan HS
6	Carlee Shannon	OF	R-R	**So.	5-7	Chester, S.C.	York Comprehensive HS
7	McKenzie Clark	OF	R-R	So.	5-5	Myakka City, Fla.	Lakewood Ranch HS
8	Grace Hiller	INF/OF	R-R	Fr.	5-9	Macon, Ga.	Tattal Square Academy
9	Sarah Howell	C/UTL	R-R	So.	5-4	Oxford, Ala.	Oxford HS
10	Emma Whitfield	RHP	L-R	*So.	5-9	Toccoa, Ga.	Stephens County HS
11	Haylee Whitesides	RHP/INF	R-R	Fr.	5-5	Duncan, S.C.	Byrnes HS
12	Cammy Pereira	INF/OF	L-R	**Gr.	5-6	Winston-Salem, N.C.	Furman University / West Forsyth HS
13	Abi Stuart	C/UTL	R-R	*So.	5-9	Snow Camp, N.C.	Southern Alamance HS
15	Madison May	OF/INF	R-R	*So.	5-9	Toccoa, Ga.	Lowndes HS
16	Alia Logoleo	INF/OF	R-R	*So.	5-8	Nashville, Tenn.	Hillsboro HS
17	Regan Spencer	RHP	R-R	So.	5-11	Lexington, N.C.	North Davidson HS
18	Bailey Taylor	INF	R-R	*Gr.	5-7	Winnsboro, S.C.	Troy University / Richard Winn Academy
19	Jaden Cheek	INF/OF	R-R	So.	5-9	Carnesville, Ga.	Franklin County HS
21	Jadeyn Ruszkowski	INF	L-L	Fr.	5-8	Lithia, Fla.	Newsome HS
23	JoJo Hyatt	C	R-R	**So.	5-8	Buford, Ga.	Buford HS
24	Arielle Oda	OF/INF	L-R	**So.	5-4	Buford, Ga.	Buford HS
25	Marissa Guimbarda	UTL	R-R	*Gr.	5-6	Suwanee, Ga.	Furman University / Lambert HS
27	Grace Mattimore	C/UTL	R-R	*Gr.	5-7	Ashburn, Va.	Army West Point / Broad Run HS
28	Maddie Moore	INF	R-R	Fr.	5-7	Loomis, Calif.	Del Oro HS
42	Morgan Johnson	OF	R-R	*So.	6-1	Evans, Ga.	Evans HS
58	Kyah Keller	INF	R-R	*So.	6-0	Hollywood, Ala.	Battle Ground Academy
72	Valerie Cagle	P/UTL	L-R	*So.	5-9	Yorktown, Va.	Homeschooled
77	Hannah Goodwin	INF	R-R	**Fr.	5-8	West Columbia, S.C.	White Knoll HS
87	Millie Thompson	LHP/INF	L-L	So.	5-7	Bedford, Va.	Liberty HS

### Head Coach:

John Rittman (3rd season • New Mexico State '86)

### Associate Head Coach:

Kyle Jamieson (3rd season • Brock University '97, Nipissing University '98)

### Assistant Coach:

Courtney Breault (3rd season • Nebraska '13, Clemson '21)

### Volunteer Assistant Coach:

Reese Jacobs (3rd season • Georgia Southern '79, Tennessee '81)

### Graduate Assistant Coach:

Alyssa Bilodeau (1st season • Jacksonville '21)

### Director of Operations:

Jeannie Murphy (3rd season • Oklahoma '10, Concordia University Irvine '14)

### Student Manager:

Amanda Fitzwilliam (2nd season • Clemson '24)

### Student Manager:

Anna Johnson (1st season • Clemson '23)

### Student Manager:

Olivia Turpin (1st season • Clemson '24)

### Associate AD/Sport Supervisor:

Natalie Honnen (3rd season • University of Florida '03 & '05)

### Athletic Trainer:

Katie Rovtar (3rd season • University of Toledo '06, Virginia Tech '08)

### Strength & Conditioning Coach:

Ryan Metzger (3rd season • University of Wisconsin-Oshkosh '11, University of Kentucky '15)

### Athletic Communications Contact:

Valerie Johnson (1st season • Central Michigan '18)

### Academic Advisor:

Kayla Velasquez (1st season • Bowling Green '17, Northwestern State '19)

### Assistant Director of Equipment:

Ben Miller (3rd season • Clemson '16 & '18)

### Supervisor of Athletic Grounds:

Mike Echols (3rd season • Clemson '85)

## ALPHABETICAL

#	Player	Pos.	Cl.
72	Valerie Cagle	RHP/UTL	*So.
19	Jaden Cheek	INF/UTL	So.
7	McKenzie Clark	OF	So.
1	Rachel Gibson	RHP	Fr.
77	Hannah Goodwin	INF	*So.
25	Marissa Guimbarda	OF/UTL	*Sr.
8	Grace Hiller	INF/OF	Fr.
5	Ansley Houston	INF	So.
9	Sarah Howell	C/UTL	So.
23	JoJo Hyatt	C	**So.
42	Morgan Johnson	OF	*So.
58	Kyah Keller	INF	*So.
16	Alia Logoleo	OF	*So.
27	Grace Mattimore	C/UTL	*So.
15	Madison May	INF/OF	*So.
2	Brooke McCubbin	RHP/INF	Fr.
28	Maddie Moore	INF	Fr.
24	Arielle Oda	INF/OF	**So.
12	Cammy Pereira	INF/OF	**Sr.
3	Sam Russ	OF	+Gr.
29	Jaden Ruszkowski	INF	Fr.
6	Carlee Shannon	OF	**So.
17	Regan Spencer	RHP	So.
13	Abi Stuart	C/UTL	So.
18	Bailey Taylor	INF	*So.
87	Millie Thompson	LHP/INF	So.
4	Aby Vieira	C/UTL	Fr.
11	Haylee Whitesides	RHP/INF	Fr.
10	Emma Whitfield	RHP	*So.

## PRONUNCIATIONS

#	Name	Pronunciation
4	Aby Vieira	vee-AIR-uh
12	Cammy Pereira	puh-RAYR-uh
16	Alia Logoleo	lo-guh-LAY-oh
21	Jadeyn Ruszkowski	russ-COW-ski
24	Arielle Oda	OH-duh
25	Marissa Guimbarda	GUHM-bar-duh
87	Millie Thompson	MILL-ee
	Kyle Jamieson	pronounced like, "Jamison"
	Courtney Breault	BREE-ahlt
	Katie Rovtar	ROHV-tahr

\* - one redshirt; + - transfer using extra year of eligibility granted due to Covid-19; Note: "Gr." denotes senior unless otherwise noted.

## PRESEASON HONORS

### #1 RACHEL GIBSON • RHP • FR.

- One of Top 75 Impact Freshmen by D1Softball.com

### #2 BROOKE MCCUBBIN • RHP/INF • FR.

- Softball America ACC Top Newcomer to Watch

### #7 MCKENZIE CLARK • OF • SO.

- Preseason All-ACC selection

### #25 MARISSA GUIMBARDA • UTL • \*GR.

- No. 91 on Extra Innings Softball's Extra Elite 100 List
- No. 82 on Softball America's 2022 Preseason College Top 100 list

### #72 VALERIE CAGLE • RHP/UT • \*SO.

- Preseason All-ACC selection
- USA Softball Collegiate Player of the Year Top 50 Watch List
- No. 6 on Extra Innings Softball's Extra Elite 100 list
- No. 19 on Softball America's 2022 Preseason College Top 100 list
- Preseason D1Softball.com ACC Player of the Year
- Preseason D1Softball.com First Team All-American
- Preseason Softball America First Team All-American
- D1Softball.com Preseason Top 10 Pitcher Power Rankings

## HOME RUNS

#	Player <sup>(#)</sup>	Opponent (Date)	OB	Inn.	Outs
1.	Pereira <sup>(1)</sup>	\$ at FGCU (2-10)	0	2	0
2.	Cagle <sup>(1)</sup>	\$ at FGCU (2-10)	2	5	1
3.	Logoleo <sup>(1)</sup>	\$ vs. Kent State (2-11)	2	1	2
4.	Cagle <sup>(2)</sup>	\$ vs. LIU (2-12)	2	6	2
5.	Guimbarda <sup>(1)</sup>	% vs. No. 18 Tennessee (2-18)	0	3	2
6.	Cagle <sup>(3)</sup>	% vs. No. 6 Washington (2-20)	0	6	2
7.	Guimbarda <sup>(2)</sup>	at Charlotte (2-23)	1	4	0
8.	Guimbarda <sup>(3)</sup>	# Boston University (2-25)	1	2	0
9.	Logoleo <sup>(2)</sup>	# Boston University (2-25)	1	5	1
10.	Vieira <sup>(1)+</sup>	# Akron (2-26)	3	1	2
11.	Clark <sup>(1)++</sup>	# Akron (2-26)	0	3	2
12.	Moore <sup>(1)</sup>	# Boston University (2-26)	1	3	2

\* - ACC regular-season game

\$ - FGCU Kickoff Classic (Fort Myers, Fla.)

% - St. Pete/Clearwater Elite Invitational (Clearwater, Fla.)

# - Clemson Classic (Clemson, S.C.)

^ - ACC Championship (Louisville, Ky.)

+ - Grand Slam

++ - Inside the Park Home Run

# HEAD COACH JOHN RITTMAN



**John Rittman**, a longtime head coach and member of the USA Softball Women's National Team coaching pool, was named the first Head Coach of Clemson Softball on Nov. 3, 2017. Rittman came to Clemson after serving as the Associate Head Coach at the University of Kansas from 2015-17. Rittman joined the Jayhawks after 18 seasons as the Head Coach at Stanford University and 10 years on the United States National Team coaching staff (2001-08, 2016-18).

During the second season and first complete year, Rittman propelled Clemson to even higher heights by becoming the ACC Regular Season Champions after posting a 29-5 ACC record and winning seven ACC series, including six series sweeps. The Tigers were ACC Tournament Runner-Ups after shutting out both Georgia Tech and then-No. 20 Virginia Tech in the first two rounds before dropping the championship game, 1-0, to then-No. 21 Duke. Rittman was named ACC Coach of the Year and guided Valerie Cagle to being the first student-athlete in league history to be named both the ACC Freshman and Player of the Year in the same season. Clemson finished with six individuals earning nine All-ACC team selections following the regular season, including three on the first team. Cagle and freshman McKenzie Clark were named to the NFCA All-Region team. The honors continued to roll in for Cagle as she became the first Clemson softball All-American garnering second team honors from the NFCA, was a JWOS First Team All-American, a Top-Three Finalist for the NFCA's National Freshman of the Year and a Top-10 Finalist for USA Softball's Collegiate Player of the Year. Behind Rittman's efforts, Clemson climbed as high as No. 13 in the NFCA national rankings and No. 10 in the ESPN/USA Softball rankings before finishing the season at No. 18 in the NFCA poll. Rittman led the Tigers to their first postseason appearance traveling to the Tuscaloosa Regional to defeat Troy twice, including a five-inning run-rule victory in the opening game that capped off a historic second season.

In its inaugural season, Rittman transcended Clemson into a nationally-respected program. Rittman guided Clemson, which was predicted to finish in 10th in the conference, according to the 2020 ACC preseason poll, to a 19-8 overall record, including 5-1 in ACC play. The Tigers, who won both of their ACC series against Virginia and Pitt, won 11 of their final 12 games before the 2020 season was cut short due to the coronavirus pandemic (COVID-19). Additionally, Clemson went 14-2 at Clemson Softball Stadium (now McWhorter Stadium), which included a 13-game home win streak that spanned 25 days. Rittman and the Tigers generated plenty of enthusiasm among the Clemson faithful as the first-year program ranked fourth nationally in attendance (24,860) and fifth in average attendance (1,544/game) in 2020. On March 3, the National Fastpitch Coaches Association (NFCA) announced the first-year program received votes (10) in the fifth edition of the 2020 USA Today/NFCA D1 Top 25 Coaches Poll. The announcement came after Clemson defeated then-No. 14 Georgia, 4-1, on Feb. 26 at Clemson Softball Stadium before sweeping the Cavaliers to win its first-ever ACC series. Under the direction of Rittman, three Tigers in Valerie Cagle (twice), Marissa Guimbarda and Logan Caymol earned

ACC weekly honors on four occasions, the most by any ACC program in 2020. Cagle, a true freshman in 2020, was second in the nation in RBIs (36), while Guimbarda finished the season fourth nationally in home runs (11). Both Cagle and Guimbarda led the ACC in RBIs and home runs, respectively.

At Stanford, Rittman and the Cardinals recorded 18-consecutive winning seasons, made 16-straight NCAA appearances, notched 13 40-win seasons and produced at least one All-American in 15 of his last 17 seasons. As head coach, Rittman accumulated a 750-351-3 overall mark, coached a national player of the year, 16 All-Americans, earned five Super Regional appearances, two Women's College World Series appearances and maintained a spot in every regular-season NFCA top-25 poll for more than a decade.

Rittman served on the staff of the USA Softball team which won gold at both the 2016 Women's Softball World Championship and the 2017 Pan Am Qualifier. He also worked with Team USA from 2001-08, coaching the 2004 Olympic gold medal winners in Athens and the 2008 silver medalists in Beijing. Team USA also won gold medals at the 2002 and 2006 World Championship and the 2003 and 2007 Pan Am Games.

Prior to being named head coach at Stanford, Rittman spent four seasons as an assistant coach at the University of Washington, focusing on hitting and defense. Rittman helped start the program and, within just four seasons, the Huskies had earned a No. 1 national ranking, won the 1996 Pac-10 Championship, made three NCAA Tournament appearances and notched a runner-up finish in their first trip to the Women's College World Series. Washington became the first team since Texas A&M (1983) to advance to the championship game in its first appearance at the WCWS.

Before his appointment at Washington, Rittman spent two seasons as an assistant at the University of Minnesota. During his second year, the Golden Gophers won the Big Ten Conference with a 20-4 league record. The Gophers set team and individual records in almost every offensive category. The Minnesota squad led the nation in hits and total bases en route to a No. 15 national ranking. Rittman also helped produce two Golden Gopher All-Americans.

From 1988-90, Rittman was an assistant coach at the University of Oregon. During his stay, the Ducks played in the 1989 Women's College World Series, set several team and individual offensive records and produced an All-American.

Rittman graduated from New Mexico State with a degree in journalism in 1986. He was a three-year letterwinner in baseball as an outfielder at NMSU after transferring from Yavapai Junior College in Prescott, Arizona.

Rittman and his wife, Lorie, a former softball player at the University of Oklahoma, are the parents of Justin, a UCLA graduate and former fullback for the Bruins, and Jake, a senior punter at Notre Dame.

## HEAD COACH JOHN RITTMAN

**Education:** Bachelor's degree in journalism at New Mexico State (1986).

**Playing Experience:** Three-year letterman at New Mexico State (1984-86).

**Coaching Experience:** Assistant Coach at Oregon (1988-90) ... Assistant Coach at Minnesota (1991-92) ... Assistant Coach at Washington (1993-96) ... Head Coach at Stanford (1997-2014) ... Associate Head Coach at Kansas (2015, 2017) ... Head Coach at Clemson (2020-present).

**Family:** Wife, Lorie Rittman ... sons, Justin and Jake.



### RITTMAN'S HEAD COACHING RECORD

Year	School	W-L	NCAA
1997	Stanford	31-27-1	
1998	Stanford	41-18	Regionals
1999	Stanford	40-25	Regionals
2000	Stanford	45-18	Regionals
2001	Stanford	54-16-1	World Series
2002	Stanford	44-20	Regionals
2003	Stanford	41-26	Regionals
2004	Stanford	49-19	World Series
2005*	Stanford	43-16	Super Regionals
2006	Stanford	42-18	Super Regionals
2007	Stanford	35-21-1	Regionals
2008	Stanford	49-15	Super Regionals
2009	Stanford	48-11	Super Regionals
2010	Stanford	37-19	Regionals
2011	Stanford	42-17	Super Regionals
2012	Stanford	40-19	Regionals
2013	Stanford	39-21	Regionals
2014	Stanford	30-25	
2020^	Clemson	19-8	N/A
2021*	Clemson	44-8	Regionals
2022	Clemson	11-3	

\* - conference champion; ^ - season suspended March 12 and later canceled due to a coronavirus (COVID-19) pandemic

### RITTMAN'S HEAD COACHING RECORD

School	Seasons	Years	W-L	Win %
Stanford	18	1997-2014	750-351-3	.681
Clemson	3	2020-22	74-19	.795
<b>Totals</b>	<b>21</b>	<b>1997-2014, 2020-22</b>	<b>824-370-3</b>	<b>.689</b>

### RITTMAN VS. ACC AS CLEMSON HEAD COACH

Team	Overall	Home	Away	Neutral
Boston College	4-0	4-0	0-0	0-0
Duke	2-4	2-2	0-0	0-2
Florida State	0-0	0-0	0-0	0-0
Georgia Tech	4-0	0-0	3-0	1-0
Louisville	4-0	0-0	4-0	0-0
North Carolina	4-0	4-0	0-0	0-0
NC State	4-0	4-0	0-0	0-0
Notre Dame	0-0	0-0	0-0	0-0
Pittsburgh	2-1	2-1	0-0	0-0
Syracuse	3-1	0-0	3-1	0-0
Virginia	7-0	3-0	4-0	0-0
Virginia Tech	2-2	1-2	0-0	1-0
<b>Totals</b>	<b>37-8</b>	<b>20-5</b>	<b>14-1</b>	<b>2-2</b>

**Note:** Clemson's neutral-site games against Duke (Feb. 7, 2020) was not considered an ACC contest towards the league's standings.

# 2022 BROADCAST SHEET

1



## RACHEL GIBSON

Fr. • RHP • 5-9 • Ringgold, Ga. • Heritage HS

	ERA	W-L	APP	CG	SHO	IP	SO
2022	99.00	0-0	1	0	0/0	0.0	0
Career	99.00	0-0	1	0	0/0	0.0	0

Season Highs: NP (22)

- Made first collegiate appearance against Akron
- D1 Softball Preseason Top 75 Impact Freshmen selection
- Prior to Clemson:
  - Two time GHSA 4A State Champion (2018, 2019)
  - Two time GHSA 4A Pitcher of the Year (2018, 2019)
  - Two time Best of Preps Softball Player of the Year (2018, 2019)
  - 2019 Georgia Dugout Club 4A Player of the Year

2



## BROOKE McCUBBIN

Fr. • RHP/INF • 5-10 • Locust Grove, Ga. • Locust Grove HS

	ERA	W-L	APP	CG	SHO	IP	SO
2022	1.40	2-1	8	0	0/3	20.0	8
Career	1.40	2-1	8	0	0/3	20.0	8

Season Highs: IP (5.1), SO (3), NP (110)

- Pitched season-high 5.1 innings vs. Northwestern
- Struck out three batters against LIU
- Prior to Clemson:
  - 2020 Georgia Softball Player of the Year
  - 2019 GACA State Pitcher of the Year
  - 2019 GADC State 5A Player of the Year
  - Two time Regional Pitcher of the Year (2018, 2019)

3



## SAM RUSS

+Gr. • OF • 5-8 • Charlotte, N.C. • NC State (Providence Day HS)

	AVG	AB	RUNS	HITS	RBI	BB	SB
2022	.304	46	9	14	2	5	7
Career	.318	547	136	174	56	85	110

Season Highs: R (2), H (3), RBI (2), 3B (1, 3x), SB (2, 2x)

- Finished with three hits and two RBIs against LIU
- Stole two bases against Wisconsin and against St. Francis
- Prior to Clemson:
  - Spent four seasons at NC State
  - Second Team All-ACC (2019) and Third Team All-ACC (2021)
  - Holds NC State's all-time record for career stolen bases (103) and single season record for stolen bases (32)

4



## ABY VIEIRA (VEE-AIR-UH)

Fr. • C/UTL • 5-9 • Mission Viejo, Calif. • Mission Viejo HS

	AVG	AB	RUNS	HITS	RBI	BB	SB
2022	.389	18	3	7	5	2	0
Career	.389	18	3	7	5	2	0

Season Highs: H (2, 2x), RBI (4), BB (1, 2x), R (1, 3x)

- Caught Spencer's and Thompson's combined no-hitter vs. Kent State
- Starting catcher in Clemson's upset over Washington
- Hit first collegiate double against Charlotte
- Recorded first collegiate grand slam (and homer) against Akron
- Also drew a walk against Akron.
- Appeared in a total of eight games this season

5



## ANSLEY HOUSTON

So. • INF • 5-6 • Grantville, Ga. • Newnan HS

	AVG	AB	RUNS	HITS	RBI	BB	SB
2022	.000	0	1	0	0	0	0
Career	.000	1	1	0	0	0	0

Season Highs: R (1)

- Has appeared as a pinch runner in six games this season
- Scored her first collegiate run against Boston University on Feb. 25
- ACC Academic Honor Roll (2021)
- Prior to Clemson:
  - Set Newnan's home run (12) and RBI (42) single season records in 2019
  - Three time All-Region First Team (2016-18)

6



## CARLEE SHANNON

\*\*So. • OF • 5-7 • Chester, S.C. • York Comprehensive HS

	AVG	AB	RUNS	HITS	RBI	BB	SB
2022	.000	0	5	0	0	0	6
Career	.000	0	28	0	0	1	33

Season Highs: R (1, 5x), SB (1, 6x)

- Appeared in 12 games in 2022 as a pinch runner
- Holds the Clemson record for most consecutive stolen bases without being caught (19) - ended in Clearwater, Fla.
- Led the team in stolen-base percentage in 2021 (18-for-18)
- Her 18 stolen bases in 2021 were good for second on the team and tied for 10th in the ACC
- Started playing softball in high school after a career-ending gymnastics injury

7



## McKENZIE CLARK

So. • OF • 5-5 • Myakka City, Fla. • Lakewood Ranch HS

	AVG	AB	RUNS	HITS	RBI	BB	SB
2022	.267	45	11	12	5	4	3
Career	.336	214	58	72	34	23	26

Season Highs: R (4), H (4), RBI (2, 2x) 2B (1), SB (1, 3x)

- Scored four runs off two hits with two RBIs at FGCU
- Recorded Clemson's first inside the park home run against Akron
- Went 4-for-4 against Akron with one stolen base as well
- 2022 Preseason All-ACC selection
- NFCA All-Region Southeast selection
- First Team All-ACC and ACC All-Freshman Team
- Led the team with 23 stolen bases in 2021 and was sixth in the ACC

8



## GRACE HILLER

Fr. • INF/OF • 5-9 • Macon, Ga. • Tattal Square Academy

	AVG	AB	RUNS	HITS	RBI	BB	SB
2022	-	-	-	-	-	-	-
Career	-	-	-	-	-	-	-

Season Highs:

- Prior to Clemson:
  - First Team All-7A Region
  - Led her HS in batting average, doubles and runs scored
  - Set HS single season batting average record (.515) in 2020
  - Selected for the Georgia Dugout Club Senior All-State Game

# 2022 BROADCAST SHEET

9



## SARAH HOWELL

*So.* • C/UTL • 5-4 • Oxford, Ala. • Oxford HS

	AVG	AB	RUNS	HITS	RBI	BB	SB
2022	-	-	-	-	-	-	-
Career	.083	12	5	1	0	0	4

**Season Highs:**

- Out during 2022 season due to injury
- Appeared in 23 games in 2021
- Scored the Tigers' game-winning run in the Tigers' 5-4 win at Georgia Tech

10



## EMMA WHITFIELD

*\*So.* • RHP • 5-9 • Toccoa, Ga. • Stephens County HS

	ERA	W-L	APP	CG	SHO	IP	SO
2022	7.00	0-0	1	0	0	1.0	1
Career	3.54	4-0	16	1	0	29.2	26

**Season Highs:** IP (1.0), NP (20)

- Made first appearance of 2022 against Akron
- Appeared in four games in 2021
- Registered a 3.94 ERA in 5.1 innings pitched
- Two time ACC Academic Honor Roll
- Earned the program's first-ever conference win in the circle against Virginia (Feb. 28, 2020)

11



## HAYLEE WHITESIDES

*Fr.* • RHP/INF • 5-5 • Duncan, S.C. • Byrnes HS

	ERA	W-L	APP	CG	SHO	IP	SO
2022	-	-	-	-	-	-	-
Career	-	-	-	-	-	-	-

**Season Highs:**

- Prior to Clemson:
- Two time South Carolina 5A State Champion (2017, 2021)
- Two time member of the Spartanburg Herald Journal All-Area Team (2018, 2019)

12



## CAMMY PEREIRA (PUH-RAYR-UH)

*\*\*Gr.* • INF/OF • 5-6 • Winston-Salem, N.C. • Furman (West Forsyth HS)

	AVG	AB	RUNS	HITS	RBI	BB	SB
2022	.385	39	8	15	7	1	0
Career	.312	478	81	149	55	16	22

**Season Highs:** R (2), H (3, 2x), HR (1), 2B (1, 4x), RBI (3)

- Hit Clemson first home run of the 2022 season at FGCU
- Tallied three RBIs off two hits vs. Kent State
- Went 3-for-4 against Charlotte and 3-for-3 against Boston U
- Hit two homers against Georgia Tech (May 13, 2021) in the quarterfinals of the ACC Championship in the Tigers' first postseason win in program history
- Leader of CU Pride - helped start the organization for LGBTQ and ally student-athletes and staff

13



## ABI STUART

*\*So.* • C/UTL • 5-9 • Snow Camp, N.C. • Southern Alamance HS

	AVG	AB	RUNS	HITS	RBI	BB	SB
2022	.000	3	1	0	0	1	0
Career	.245	106	15	26	19	8	0

**Season Highs:** R (1), BB (1)

- Has appeared in three games in 2022 (DP in 2, PR in 1)
- Scored one run against Kent State and drew a walk at FGCU
- Played in 36 games, starting in 31 in 2021
- Hit .259 in 85 at bats with 10 runs and a .447 slugging percentage
- Posted an eight-game hitting streak, the third longest streak by any Tiger on the season
- Two time ACC Academic Honor Roll recipient

15



## MADISON MAY

*\*So.* • INF/OF • 5-9 • Valdosta, Ga. • Lowndes HS

	AVG	AB	RUNS	HITS	RBI	BB	SB
2022	.238	21	2	5	4	4	0
Career	.167	30	2	5	4	5	0

**Season Highs:** AB (4), H (2), R (1, 2x), RBI (2), BB (2, 2x)

- Hit a RBI double against Charlotte
- Went 1-for-1 with a double, two RBIs, two walks and one run scored against Texas Tech
- Finished with two hits against Wisconsin
- Recorded first career hit and run against LIU
- Two time ACC Academic Honor Roll recipient
- Reached base on four-straight balls in only plate appearance of the 2021 season

16



## ALIA LOGOLEO (LO-GUH-LAY-OH)

*\*So.* • INF/OF • 5-8 • Nashville, Tenn. • Hillsboro HS

	AVG	AB	RUNS	HITS	RBI	BB	SB
2022	.385	39	9	15	11	3	1
Career	.311	196	38	61	48	18	15

**Season Highs:** R (2, 2x), H (3), 2B (2), HR (1, 2x), RBI (4)

- Started at either SS or 3B every game this season
- Recorded a double and homer against Kent State with four RBIs
- Hit two doubles against Charlotte
- Hit a walk-off home run
- Second Team All-ACC selection and ACC All-Freshman Team selection in 2021
- Hit two grand slams in 2021 (only player to record a grand slam last year)
- Hit a grand slam, a three-run homer, a two-run homer and a double at Syracuse

17



## REGAN SPENCER

*So.* • RHP • 5-11 • Lexington, N.C. • North Davidson HS

	ERA	W-L	APP	CG	SHO	IP	SO
2022	0.00	2-0	3	1	1/1	11.2	9
Career	1.16	8-0	17	3	2/2	54.1	29

**Season Highs:** IP (7.0), SO (4), NP (84)

- Earned her second victory in the circle this season with a 7.0 inning performance against St. Francis
- Threw Clemson's first combined no-hitter with Millie Thompson vs. Kent State
- Pitched 3.0 innings with four strikeouts against Kent State to earn win
- Struck out three batters in 1.2 innings of work against Northwestern
- Went 6-0 in the circle in 2021 with a 1.48 ERA in 14 appearances and 42.2 innings pitched

# 2022 BROADCAST SHEET

18



## BAILEY TAYLOR

\*Gr. • INF • 5-7 • Winnsboro, S.C. • Troy (Richard Winn Academy)

	AVG	AB	RUNS	HITS	RBI	BB	SB
2022	.250	4	0	1	0	0	0
Career	.282	213	26	60	63	21	1

Season Highs: H (1), HPB (2)

- Has started in four games this season
- Pinch hit in the seventh inning against Northwestern
- Missed 2021 season due to injury
- Recorded Clemson's first run, sac fly and hit by pitch vs. St. John's (Feb. 7, 2020) and first double vs. Duke (Feb. 7, 2020) in program history
- Recorded a grand slam against Maryland helping Clemson become just the seventh program in NCAA Division I history to record two grand slams in a single inning

19



## JADEN CHEEK

So. • INF/UTL • 5-9 • Carnesville, Ga. • Franklin County HS

	AVG	AB	RUNS	HITS	RBI	BB	SB
2022	-	-	-	-	-	-	-
Career	.100	10	11	1	0	0	2

Season Highs:

- Has appeared in two games in 2022 as a pinch runner
- Appeared in 39 games in 2021
- Made first career start as the Tigers' designated player against Furman
- Recorded first career hit on a single to right field against Furman

21



## JADEYN RUSZKOWSKI (RUSS-COW-SKI)

Fr. • INF • 5-8 • Lithia, Fla. • Newsome HS

	AVG	AB	RUNS	HITS	RBI	BB	SB
2022	-	-	-	-	-	-	-
Career	-	-	-	-	-	-	-

Season Highs:

- Prior to Clemson:
- Two time District Champion
- Member of the 9A First Team All-State as a designated player
- Had a batting average of .652 as a junior in HS

23



## JOJO HYATT

\*\*So. • C • 5-8 • Buford, Ga. • Buford HS

	AVG	AB	RUNS	HITS	RBI	BB	SB
2022	.263	19	0	5	5	2	0
Career	.251	175	15	44	26	15	0

Season Highs: H (1, 5x), 3B (1), RBI (3), BB (1, 2x) PO (13)

- Has caught seven games this season
- Hit the walk-off triple to run-rule Texas Tech to open the SPCEI with three RBIs
- Brought in two runners in Clemson's 4-3 win over Tennessee
- Started 50 games at catcher in 2021
- Hit .223 with four runs, a .266 slugging percentage and .291 on-base percentage
- Hit first career home run at Virginia (Mar. 7, 2021)
- Two time ACC Academic Honor Roll recipient

24



## ARIELLE ODA (OH-DUH)

\*\*So. • INF/OF • 5-4 • Buford, Ga. • Buford HS

	AVG	AB	RUNS	HITS	RBI	BB	SB
2022	.667	3	3	2	0	0	0
Career	.217	23	25	5	4	0	0

Season Highs: R (1, 3x), AB (2), H (1, 2x)

- Has two hits this season
- Has appeared in 13 games this season
- Appeared in 46 games, including 14 starts in 2021
- Hit .143 with 10 runs scored last season
- Two time ACC Academic Honor Roll member
- Scored one of four runs in the sixth inning in the Tigers' 5-3 comeback win at Virginia (Mar. 6, 2021)

25



## MARISSA GUIMBARDA (GUHM-BAR-DUH)

\*Gr. • OF/UTL • 5-6 • Suwanee, Ga. • Furman (Lambert HS)

	AVG	AB	RUNS	HITS	RBI	BB	SB
2022	.300	40	7	12	12	7	0
Career	.309	482	75	149	149	71	2

Season Highs: R (2, 2x), H (2, 3x), RBI (3, 2x), BB (2, 2x)

- Recorded the hit that scored the first run in Clemson's win over Washington
- Recorded her 50th and 51st career home run (Furman and Clemson) to become the 196th player in D1 history to accomplish the feat in her career
- Started in 48 games in 2021 and hit .309 with 21 runs, 13 homers, 42 RBI and a .669 slugging percentage
- Is a Weaver-James-Corrigan postgraduate scholarship award recipient
- No. 91 preseason player by Extra Innings Softball and No. 86 by Softball America

27



## GRACE MATTIMORE

\*Gr. • C/UTL • 5-7 • Ashburn, Va. • Army West Point (Broad Run HS)

	AVG	AB	RUNS	HITS	RBI	BB	SB
2022	.000	1	0	0	0	0	0
Career	.276	158	26	45	23	39	1

Season Highs: AB (1)

- Appeared as a pinch hitter against Northwestern
- Started in 40 games in 2021
- Hit .253 in 91 at bats with 10 runs
- Is a Weaver-James-Corrigan postgraduate scholarship award recipient
- ACC Academic Honor Roll recipient
- Hit .333 in 66 at bats in 2020 and led the ACC with 10 doubles during the shortened COVID season

28



## MADDIE MOORE

Fr. • INF • 5-7 • Loomis, Calif. • Del Oro HS

	AVG	AB	RUNS	HITS	RBI	BB	SB
2022	.200	25	6	5	2	2	1
Career	.200	25	6	5	2	2	1

Season Highs: R (1, 6x), H (1, 5x), BB (1, 2x), SB (1), HR (1)

- Has started every game this season
- Recorded a hit and a run at FGCU on opening day
- Scored the winning run for Clemson vs. Tennessee and the first run for Clemson against Washington
- Hit first career home run against Boston University on 2/26
- Hit first collegiate double at Charlotte

# 2022 BROADCAST SHEET

42



## MORGAN JOHNSON

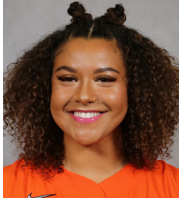
\*So. • OF • 6-1 • Evans, Ga. • Evans HS

	AVG	AB	RUNS	HITS	RBI	BB	SB
2022	-	-	-	-	-	-	-
Career	.288	52	9	15	18	8	4

Season Highs:

- Out during 2022 season due to injury
- Read her "My Story" feature on ClemsonTigers.com - Johnson penned a letter to Jackie Robinson for Black History Month
- Appeared in 30 games in 2021 and hit .350 in 40 at bats with a .725 slugging percentage
- Two time ACC Academic Honor Roll recipient
- Member of Clemson's POWER - a Women's Leadership Academy

58



## KYAH KELLER

\*So. • INF • 6-0 • Hollywood, Ala. • Battle Ground Academy

	AVG	AB	RUNS	HITS	RBI	BB	SB
2022	.286	7	0	2	1	1	0
Career	.250	100	7	25	18	7	0

Season Highs: H (1, 2x), RBI (1), BB (1)

- Pinch hit a RBI single against LIU to spur Clemson's eight-inning scoring run in the sixth
- Has seen time in four games this season
- Hit .256 in 90 at bats with six runs and a .367 slugging percentage
- Recorded two homers in CU's 12-1 win against North Carolina while going 3-for-3 with a career-best four RBI
- Two time ACC Academic Honor Roll member

72



## VALERIE CAGLE

\*So. • RHP/UTL • 5-9 • Yorktown, Va. • Homeschooled

	AVG	AB	RUNS	HITS	RBI	BB	SB
2022	.372	43	9	16	12	5	5
Career	.390	292	78	114	93	38	5

Season Highs: H (3, 2x), R (2, 2x), RBI (6), HR (1, 3x), HBP (1)

	ERA	W-L	APP	CG	SHO	IP	SO
2022	1.47	5-2	9	3	2/2	38.0	47
Career	1.46	42-15	68	37	13/4	344.1	401

Season Highs: IP (9.0), H (5, 2x), SO (13), BB (3)

- Tallied three hits and six RBIs at FGCU - including her first homer of the season
- Struck out 10 batters and hit a solo home run in Clemson's 2-0 upset over Washington
- Preseason All-ACC selection and D1Softball Preseason First Team All-American
- Hit .404 in 156 at bats with 43 runs, 17 homers, 45 RBI and a .821 slugging percentage in 2021
- Posted a 1.16 ERA with 267 strikeouts in 216.2 innings pitched in 2021
- Pitched two complete-game no-hitters in 2021 in 6-0 win against Boston College and 9-0 win against Winthrop
- Joined Team USA's U-18 Junior Women's National Team

77



## HANNAH GOODWIN

\*\*Fr. • INF • 5-8 • West Columbia, S.C. • White Knoll HS

	AVG	AB	RUNS	HITS	RBI	BB	SB
2022	.000	1	0	0	0	0	0
Career	.361	83	15	30	16	5	1

Season Highs: AB (1)

- Made first appearance in 2022 as a pinch hitter vs. Charlotte
- Missed 2021 season due to injury after being tabbed a 2021 Preseason All-ACC selection
- ACC Academic Honor Roll selection
- Started 26 games at shortstop in 2020
- Led the 2020 team with a .385 average during the shortened COVID season

87



## MILLIE THOMPSON (MILL-EE)

So. • LHP/INF • 5-9 • Snow Camp, N.C. • Liberty HS

	ERA	W-L	APP	CG	SHO	IP	SO
2022	1.38	2-0	5	0	0	20.1	20
Career	1.91	11-1	24	3	0/4	99.0	90

Season Highs: IP (6.0), H (7), SO (9), NP (89)

- Started and earned the first victory of the 2022 season against Charlotte
- Earned her second victory in as many games against Boston on Feb. 26
- Threw Clemson's first combined no-hitter with Regan Spencer vs. Kent State
- Struck out nine batters against Wisconsin - one shy of her career high
- Underwent successful surgery in December to correct a left forearm compartment syndrome injury
- 2021 ACC All-Freshman Team

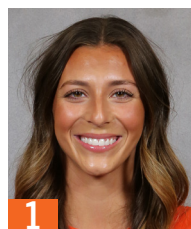
## QUICK FACTS

Nickname	Tigers
Location	Clemson, S.C. 29633
Colors	Clemson Orange & Regalia
Founded	1889
Enrollment	27,341
President	Dr. James P. Clements (Maryland-Baltimore County '85)
Director of Athletics	Graham Neff (Georgia Tech '06)
Conference	Atlantic Coast Conference
Facility (Capacity)	McWhorter Stadium (1,616)
Year Opened	2020
Dimensions	LF - 205, CF - 220, RF - 205
Record Crowd	1,616
Head Coach	John Rittman (New Mexico State '86)
Record at Clemson	74-19 (3 <sup>rd</sup> season)
Overall Record	824-370-3 (21 <sup>st</sup> season)
Associate Head Coach	Kyle Jamieson (Brock '97 & Nipissing '98)
Assistant Coach	Courtney Breault (Nebraska '13, Clemson '21)
Volunteer Assistant Coach	Reese Jacobs (Georgia Southern '79)
Director of Operations	Jeannie Murphy (Oklahoma '10, Concordia '14)
Graduate Assistant	Alyssa Bilodeau (Jacksonville '21)
Athletic Trainer	Katie Rovtar (Toledo '06 & Virginia Tech '08)
Strength Coach	Ryan Metzger (Wisconsin-Oshkosh '11 & Kentucky '15)
Sport Administrator	Natalie G. Honnen (Florida '03 & '05)
First Year of Softball	2020
Season of Softball	Third

## ACC STANDINGS

SCHOOL	CONF	CPCT.	OVERALL	PCT.	STREAK
Florida State	0-0	.000	15-0	1.000	W15
NC State	0-0	.000	13-2	.867	L1
Georgia Tech	0-0	.000	12-2	.857	W5
Virginia Tech	0-0	.000	11-2	.846	W4
Duke	0-0	.000	13-3	.812	W2
Clemson	0-0	.000	11-3	.786	W6
Notre Dame	0-0	.000	11-3	.786	W6
Syracuse	0-0	.000	9-3	.750	W1
Louisville	0-0	.000	7-3	.700	W1
Virginia	0-0	.000	9-5	.643	W5
Boston College	0-0	.000	7-4	.636	W2
Pitt	0-0	.000	8-5	.615	W1
North Carolina	0-0	.000	9-6	.600	L1

# 2022 TV ROSTER



**1**  
RACHEL GIBSON  
Fr. - RHP



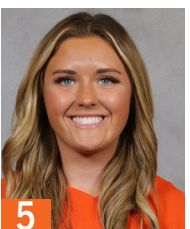
**2**  
BROOKE McCUBBIN  
Fr. - RHP/INF



**3**  
SAM RUSS  
+Gr. - OF



**4**  
ABY VIEIRA  
Fr. - C/UTL



**5**  
ANSLEY HOUSTON  
So. - INF



**6**  
CARLEE SHANNON  
\*\*So. - OF



**7**  
MCKENZIE CLARK  
So. - OF



**8**  
GRACE HILLER  
Fr. - INF/OF



**9**  
SARAH HOWELL  
So. - C/UTL



**10**  
EMMA WHITFIELD  
\*So. - RHP



**11**  
HAYLEE WHITESIDES  
Fr. - RHP/INF



**12**  
CAMMY PEREIRA  
\*\*Gr. - INF/OF



**13**  
ABI STUART  
\*So. - C/UTL



**15**  
MADISON MAY  
\*So. - OF/INF



**16**  
ALIA LOGOLEO  
\*So. - OF/INF



**17**  
REGAN SPENCER  
So. - RHP



**18**  
BAILEY TAYLOR  
\*Gr. - INF



**19**  
JADEN CHEEK  
So. - INF/OF



**21**  
JADEYN RUSZKOWSKI  
Fr. - INF



**23**  
JoJo HYATT  
\*\*So. - C



**24**  
ARIELLE ODA  
\*\*So. - OF/INF



**25**  
MARISSA GUIMBARDA  
\*Gr. - UTL



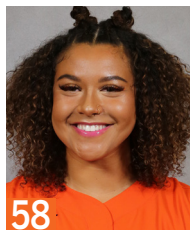
**27**  
GRACE MATTIMORE  
\*Gr. - C/UTL



**28**  
MADDIE MOORE  
Fr. - INF



**42**  
MORGAN JOHNSON  
\*So. - OF



**58**  
KYAH KELLER  
\*So. - INF



**72**  
VALERIE CAGLE  
\*So. - RHP/UTL



**77**  
HANNAH GOODWIN  
\*\*Fr. - INF



**87**  
MILLIE THOMPSON  
So. - LHP



**HC**  
JOHN RITTMAN  
3rd Season



**AC**  
KYLE JAMIESON  
3rd Season



**AC**  
COURTNEY BREAUT  
3rd Season



**VC**  
REESE JACOBS  
3rd Season



**GA**  
ALYSSA BIODEAU  
1st Season



**DO**  
JEANNIE MURPHY  
3rd Season

# PLAYER HIGHS

## #1 RACHEL GIBSON

Career (Last)	Category	2022
	IP	
Same	Runs Allowed	4 (Akron 2/26)
Same	Earned Runs	3 (Akron 2/26)
	Walks Issued	
	Strikeouts	
Same	Hits Allowed	1 (Akron 2/26)
	Doubles Allowed	
	Triples Allowed	
	Homers Allowed	

## #2 BROOKE McCUBBIN

Career (Last)	Category	2022
	IP	5.1 (vs Northwestern 2/19)
Same	Runs Allowed	7 (vs Northwestern 2/19)
Same	Earned Runs	3 (vs Northwestern 2/19)
Same	Walks Issued	2 (vs Texas 2/11)
Same	Strikeouts	3 (vs LIU 2/12)
Same	Hits Allowed	9 (vs Northwestern 2/19)
Same	Doubles Allowed	1, 2x (Boston U 2/26)
	Triples Allowed	
Same	Homers Allowed	1 (vs Northwestern 2/19)

## #3 SAM RUSS

Career (Last)	Category	2022
Same	Runs	2 (at FGCU 2/10)
Same	Hits	3 (vs LIU 2/12)
Same	RBI	2 (vs LIU 2/12)
Same	Doubles	1, 2x (vs Wisconsin 2/19)
Same	Triples	1, 3x (vs Texas Tech 2/17)
	Home Runs	
	Walks	2 (vs Wisconsin 2/19)
	HBP	
Same	Stolen Bases	2, 2x (St. Francis 2/25)

## #4 ABY VIEIRA

Career (Last)	Category	2022
Same	Runs	1, 3x (Akron 2/26)
Same	Hits	2, 2x (Boston U 2/25)
Same	RBI	4 (Akron 2/26)
Same	Doubles	1 (at Charlotte 2/23)
	Triples	
	Home Runs	1 (Akron 2/26)
Same	Walks	1, 2x (Akron 2/26)
	HBP	
	Stolen Bases	

## #5 ANSLEY HOUSTON

Career (Last)	Category	2022
Same	Runs	1 (Boston U 2/25)
-	Hits	
-	RBI	
-	Doubles	
-	Triples	
-	Home Runs	
-	Walks	
-	HBP	
-	Stolen Bases	

## #6 CARLEE SHANNON

Career (Last)	Category	2022
1, 28x (Boston U 2/26/22)	Runs	1, 5x (Boston U 2/26)
-	Hits	
-	RBI	
-	Doubles	
-	Triples	
-	Home Runs	
-	Walks	
-	HBP	
2 (Winthrop 4/13/21)	Stolen Bases	1, 6x (Akron 2/26)

## #7 McKENZIE CLARK

Career (Last)	Category	2022
4 (at FGCU 2/10)	Runs	4 (at FGCU 2/10)
4 (Akron 2/26/22)	Hits	4 (Akron 2/26)
3, 2x (North Carolina 4/3/21)	RBI	2, 2x (Boston U 2/26)
2, 2x (Duke 3/27/21)	Doubles	1 (at FGCU 2/10)
1, 7x (vs Tennessee 2/18/22)	Triples	1 (vs Tennessee 2/18)
1, 10x (Akron 2/26/22)	Home Runs	1 (Akron 2/26)
2, 2x (at South Carolina 4/21/21)	Walks	1, 4x (vs Wisconsin 2/19)
1, 6x (Boston U 2/26/22)	HBP	1 (Boston U 2/26)
3 (Elon 2/27/21)	Stolen Bases	1, 3x (Akron 2/26)

## #8 GRACE HILLER

Career (Last)	Category	2022
	Runs	
	Hits	
	RBI	
	Doubles	
	Triples	
	Home Runs	
	Walks	
	HBP	
	Stolen Bases	

## #9 SARAH HOWELL

Career (Last)	Category	2022
1, 5x (North Carolina 4/3/21)	Runs	
1 (at North Florida 2/12/21)	Hits	
-	RBI	
-	Doubles	
-	Triples	
-	Home Runs	
-	Walks	
-	HBP	
2 (at Virginia 3/7/21)	Stolen Bases	

## #10 EMMA WHITFIELD

Career (Last)	Category	2022
5.0 (Charlotte 3/4/20)	IP	1.0 (Akron 2/26)
3 (vs St. John's 2/9/20)	Runs Allowed	1 (Akron 2/26)
3 (vs St. John's 2/9/20)	Earned Runs	1 (Akron 2/26)
3 (Pittsburgh 3/7/20)	Walks Issued	
3, 4x (Furman 3/13/21)	Strikeouts	1 (Akron 2/26)
5 (Charlotte 3/4/20)	Hits Allowed	2 (Akron 2/26)
2 (Maryland 2/15/20)	Doubles Allowed	
1 (Akron 2/26/22)	Triples Allowed	1 (Akron 2/26)
1, 5x (Winthrop 4/13/21)	Homers Allowed	

## #11 HAYLEE WHITESIDES

Career (Last)	Category	2022
	IP	
	Runs Allowed	
	Earned Runs	
	Walks Issued	
	Strikeouts	
	Hits Allowed	
	Doubles Allowed	
	Triples Allowed	
	Homers Allowed	

## #12 CAMMY PEREIRA

Career (Last)	Category	2022
3 (Maryland 2/15/20)	Runs	2 (vs Texas Tech 2/17)
3, 8x (Boston U 2/25/22)	Hits	3, 2x (Boston U 2/25)
3, 2x (vs Kent State 2/11/22)	RBI	3 (vs Kent State 2/11)
1, 11x (Boston U 2/25/22)	Doubles	1, 4x (Boston U 2/25)
1, 2x (North Carolina 4/2/21)	Triples	
2 (vs Georgia Tech 5/13/21)	Home Runs	1 (at FGCU 2/10)
2 (Boston College 4/17/21)	Walks	1 (Akron 2/26)
2 (Virginia 2/28/20)	HBP	1, 4x (Akron 2/26)
1, 9x (vs Troy 5/21/21)	Stolen Bases	

## #13 ABI STUART

Career (Last)	Category	2022
3 (vs St. John's 2/9/20)	Runs	1 (vs Kent State 2/11)
2, 6x (Boston College 4/16/21)	Hits	
3, 3x (Winthrop 4/13/21)	RBI	
2 (Furman 3/12/21)	Doubles	
-	Triples	
1, 5x (North Carolina 4/2/21)	Home Runs	
2 (Western Carolina 2/12/20)	Walks	1 (at FGCU 2/10)
1, 2x (Boston College 4/17/21)	HBP	
-	Stolen Bases	

## #15 MADSION MAY

Career (Last)	Category	2022
Same	Runs	1, 2x (vs Texas Tech 2/17)
Same	Hits	2 (vs Wisconsin 2/19)
Same	RBI	2 (vs Texas Tech 2/17)
Same	Doubles	1, 2x (at Charlotte 2/23)
-	Triples	
-	Home Runs	
Same	Walks	2, 2x (vs Tennessee 2/18)
Same	HBP	1 (vs Tennessee 2/18)
-	Stolen Bases	

# PLAYER HIGHS

## #16 ALIA LOGOLEO

CAREER (LAST)	CATEGORY	2022
4 (at Syracuse 5/9/21)	Runs	2, 2x (Boston U 2/25)
4 (at Syracuse 5/9/21)	Hits	3 (Boston U 2/26)
10 (at Syracuse 5/9/21)	RBI	4 (vs Kent State 2/11)
2, 2x (at Charlotte 2/23/22)	Doubles	2 (at Charlotte 2/23)
1, 2x (Morgan State 2/23/20)	Triples	
3 (at Syracuse 5/9/21)	Home Runs	1, 2x (Boston U 2/25)
2 (Virginia 2/29/20)	Walks	1, 3x (Akron 2/26)
1, 5x (at Alabama 5/23/21)	HBP	
2 (vs Virginia Tech 5/14/21)	Stolen Bases	1 (vs Texas Tech 2/17)

## #17 REGAN SPENCER

CAREER (LAST)	CATEGORY	2022
7.0, 2x (St. Francis 2/25/22)	IP	7.0 (St. Francis 2/25)
3 (Boston College 4/17/21)	Runs Allowed	
3 (Boston College 4/17/21)	Earned Runs	
3, 2x (vs Troy 5/22/21)	Walks Issued	2 (vs Kent State 2/11)
8 (at Louisville 3/20/21)	Strikeouts	4 (vs Kent State 2/11)
7 (at Georgia Tech 2/21/21)	Hits Allowed	5 (St. Francis 2/25)
2 (Boston College 4/17/21)	Doubles Allowed	
-	Triples Allowed	
1, 3x (at Louisville 3/20/21)	Homers Allowed	

## #18 BAILEY TAYLOR

CAREER (LAST)	CATEGORY	2022
3, 2x (Virginia 3/1/20)	Runs	
2, 4x (Pittsburgh 3/6/20)	Hits	1 (St. Francis 2/25)
4 (Maryland 2/15/20)	RBI	
1, 2x (Virginia 2/28/20)	Doubles	
-	Triples	
1, 2x (Pittsburgh 3/6/20)	Home Runs	
2 (Maryland 2/15/20)	Walks	
Same	HBP	2 (vs Kent State 2/11)
-	Stolen Bases	

## #19 JADEN CHEEK

CAREER (LAST)	CATEGORY	2022
1 (North Carolina 4/3/21)	Runs	
1 (Furman 3/23/21)	Hits	
-	RBI	
-	Doubles	
-	Triples	
-	Home Runs	
-	Walks	
-	HBP	
1, 2x (NC State 4/23/21)	Stolen Bases	

## #21 JADEYN RUSZKOWSKI

CAREER (LAST)	CATEGORY	2022
	Runs	
	Hits	
	RBI	
	Doubles	
	Triples	
	Home Runs	
	Walks	
	HBP	
	Stolen Bases	

## #23 JoJo HYATT

CAREER (LAST)	CATEGORY	2022
3 (Maryland 2/15/20)	Runs	
3 (at Syracuse 5/9/21)	Hits	1, 5x (Boston U 2/26)
3 (vs Texas Tech 2/17/22)	RBI	3 (vs Texas Tech 2/17)
1, 3x (at Syracuse 5/8/21)	Doubles	
1, 2x (vs Texas Tech 2/17/22)	Triples	1 (vs Texas Tech 2/17)
1 (at Virginia 3/7/21)	Home Runs	
2, 2x (Boston College 4/17/21)	Walks	1, 2x (vs Tennessee 2/18)
1, 3x (Furman 3/12/21)	HBP	
-	Stolen Bases	

## #24 ARIELLE ODA

CAREER (LAST)	CATEGORY	2022
2, 2x (Charlotte 3/4/20)	Runs	1, 3x (Boston U 2/26)
1, 4x (vs Washington 2/20/22)	Hits	1, 2x (Boston U 2/25)
2 (Charlotte 3/4/20)	RBI	
-	Doubles	
1 (Charlotte 3/4/20)	Triples	
-	Home Runs	
1, 7x (Charlotte 3/4/20)	Walks	
1, 2x (at Syracuse 5/9/21)	HBP	
1 (Michigan State 2/16/20)	Stolen Bases	

## #25 MARISSA GUIMBARDA

CAREER (LAST)	CATEGORY	2022
2, 7x (vs Kent State 2/11/22)	Runs	2, 2x (Akron 2/26)
3, 3x (Furman 3/12/21)	Hits	2, 3x (Boston U 2/26)
5 (Charlotte 3/4/20)	RBI	3, 2x (Boston U 2/26)
2 (NC State 4/23/21)	Doubles	1, 3x (Boston U 2/26)
1 (Morgan State 2/23/20)	Triples	
2 (vs Troy 2/21/20)	Home Runs	1, 3x (Boston U 2/25)
3 (Virginia 2/28/20)	Walks	2, 2x (vs Kent State 2/11)
3 (at Georgia Tech 2/21/21)	HBP	1 (at Charlotte 2/23)
11 (at UNCG 2/18/20)	Stolen Bases	

## #27 GRACE MATTIMORE

CAREER (LAST)	CATEGORY	2022
2, 4x (North Carolina 4/2/21)	Runs	
2, 9x (North Carolina 4/2/21)	Hits	
4 (vs St. John's 2/9/20)	RBI	
2 (Charlotte 3/4/20)	Doubles	
-	Triples	
1 (North Carolina 4/2/21)	Home Runs	
3, 2x (at Syracuse 5/8/21)	Walks	
2 (vs Illinois State 2/12/21)	HBP	
1 (vs Illinois State 2/12/21)	Stolen Bases	

## #28 MADDIE MOORE

CAREER (LAST)	CATEGORY	2022
Same	Runs	1, 6x (Boston U 2/26)
Same	Hits	1, 5x (Boston U 2/26)
Same	RBI	2 (Boston U 2/26)
Same	Doubles	1 (at Charlotte 2/23)
-	Triples	
Same	Home Runs	1 (Boston U 2/26)
Same	Walks	1, 2x (vs Texas 2/11)
-	HBP	
Same	Stolen Bases	1 (at FGCU 2/10)

## #58 KYAH KELLER

CAREER (LAST)	CATEGORY	2022
3 (North Carolina 4/2/21)	Runs	
3 (North Carolina 4/2/21)	Hits	1, 2x (Boston U 2/26)
4 (North Carolina 4/2/21)	RBI	1 (vs LIU 2/12)
1, 2x (at Syracuse 5/9/21)	Doubles	
1 (NC State 4/23/21)	Triples	
2 (North Carolina 4/2/21)	Home Runs	
1, 7x (vs Tennessee 2/18/22)	Walks	1 (vs Tennessee 2/18)
1, 2x (NC State 4/25/21)	HBP	
-	Stolen Bases	

## #72 VALERIE CAGLE

CAREER (LAST)	CATEGORY	2022
3, 3x (vs Troy 5/21/21)	Runs	2, 2x (Akron 2/26)
4, 2x (Virginia 2/28/20)	Hits	3, 2x (at Charlotte 2/23)
8 (Maryland 2/15/20)	RBI	6 (at FGCU 2/10)
2 (Furman 3/13/21)	Doubles	1, 3x (Boston U 2/26)
1 (Duke 3/28/21)	Triples	
2, 6x (vs Troy 5/21/21)	Home Runs	1, 3x (vs Washington 2/20)
3, 2x (Akron 2/26)	Walks	3 (Akron 2/26)
1 (vs Kent State 2/11)	HBP	1 (vs Kent State 2/11)
1, 5x (Winthrop 4/13/21)	Stolen Bases	
11.0 (at Louisville 3/19/21)	IP	9.0 (vs Tennessee 2/18)
10 (vs Duke 2/7/20)	Runs Allowed	4 (vs Texas 2/11)
10 (vs Duke 2/7/20)	Earned Runs	4 (vs Texas 2/11)
6 (vs Georgia Tech 5/13/21)	Walks Issued	3 (vs Tennessee 2/18)
14, 3x (vs Georgia Tech 5/13/21)	Strikeouts	13 (vs Tennessee 2/18)
10 (vs Duke 2/7/20)	Hits Allowed	5, 2x (vs Tennessee 2/18)
3 (Virginia 2/28/20)	Doubles Allowed	
1, 3x (vs Tennessee 2/18/22)	Triples Allowed	1 (vs Tennessee 2/18)
2, 2x (vs Tennessee 2/18/22)	Homers Allowed	2 (vs Tennessee 2/18)

## #77 HANNAH GOODWIN

CAREER (LAST)	CATEGORY	2022
2, 3x (Pittsburgh 3/6/20)	Runs	
3, 2x (vs Stetson 2/22/20)	Hits	
4 (vs St. John's 2/7/20)	RBI	
1, 5x (Pittsburgh 3/6/20)	Doubles	
-	Triples	
1, 4x (Pres. College 3/10/20)	Home Runs	
2 (Michigan State 2/16/20)	Walks	
1, 4x (Georgia 2/26/20)	HBP	
1 (at UNCG 2/18/20)	Stolen Bases	

## #87 MILLIE THOMPSON

CAREER (LAST)	CATEGORY	2022
7.0, 2x (North Carolina 4/2/21)	IP	6.0 (vs Wisconsin 2/19)
3, 4x (NC State 4/23/21)	Runs Allowed	2, 2x (Boston U 2/26)
3, 2x (NC State 4/23/21)	Earned Runs	2, 2x (Boston U 2/26)
3, 3x (vs. Troy 5/22/21)	Walks Issued	3 (at Charlotte 2/23)
10 (North Carolina 4/2/21)	Strikeouts	9 (vs Wisconsin 2/19)
8, 3x (NC State 4/23/21)	Hits Allowed	7 (Boston U 2/26)
2, 4x (Boston College 4/17/21)	Doubles Allowed	1, 3x (Boston U 2/26)
-	Triples Allowed	
1, 6x (Boston U 2/26)	Homers Allowed	1 (Boston U 2/26)