



# GAME NOTES

# CLEMSON SOFTBALL

#TEAM3

## GAMES 19: CLEMSON VS MERCER

WEDNESDAY, MARCH 9

MCWHORTER STADIUM • CLEMSON, S.C.

### THIS WEEK

- **Wednesday, March 9**
  - No. 17/17 Clemson vs. Mercer - 6 p.m.
- **Saturday, March 12**
  - No. 17/17 Clemson vs. Liberty - 1:30 p.m.
  - No. 17/17 Clemson vs. Illinois - 4 p.m.
- **Sunday, March 13**
  - No. 17/17 Clemson vs. Illinois - 12 p.m.
  - No. 17/17 Clemson vs. Liberty - 3 p.m.
- **Where** - McWhorter Stadium - Clemson, S.C.
- **Watch** - All five Clemson games this week are available on ACCNX. Easton Smith and William Qualkinbush have the call on the midweek game, and Nathan McCreary and Scott Whitlock will be on the call for the weekend tournament.
- **Live Stats** - [ClemsonTigers.com/softball/schedule](http://ClemsonTigers.com/softball/schedule)
- **Social Media** - [ClemsonSoftball](https://www.facebook.com/ClemsonSoftball)

### CLEMSON OVERVIEW

- Clemson returns 21 players from last season to the 2022 roster and added eight newcomers.
- Last week, Clemson defeated Garnder-Webb in a midweek game but dropped the weekend series to No. 6/6 Virginia Tech. The Friday night loss at McWhorter Stadium snapped the Tigers' 21-home game win streak.
- The Tigers are batting .282 as a team with a .458 slugging percentage and .367 on-base percentage. Clemson has 130 hits.
- Clemson's pitching staff is posting a 1.71 ERA through 119 innings of work and struck out a combined 110 batters.

### MERCER OVERVIEW

- Mercer is led by first year head coach Lindsay Fico.
- The Bears are batting .254 as a team with 118 hits, 54 runs scored and seven home runs. Defensively, the pitching staff has a 6.79 ERA through 114 innings with 63 strikeouts.
- Tori Hedgecock leads the Bears at the plate batting .342 with 13 hits and eight runs scored. Hannah Pitts leads the team in the circle with a 5.17 ERA through 62.2 innings with 46 strikeouts and seven complete games.

### QUICK HITS

- Clemson has outscored opponents this season 83-40.
- The Tigers have run-ruled five opponents this season: FGCU, Kent State, LIU, Texas Tech and Boston U.
- Clemson has 130 hits through 18 games, including posting 24 doubles and 15 home runs.
- The Tigers have posted 75 RBIs this season led by Valerie Cagle (16), Marissa Guimbarda (15), and Alia Logoleo (11).
- When Clemson scores in the first inning, the Tigers are 6-0. The Tigers have scored 16 runs in the first inning.
- The Tigers are 11-1 when scoring first this season no matter what inning

### THE NATIONALLY RANKED TIGERS

- Every national poll this week has Clemson ranked No. 17 (NFCA/USA Today, ESPN/USA Softball, D1Softball.com and Softball America)
- Clemson received its first single-digit ranking in program history clocking in at No. 9 on the ESPN/USA Softball

poll during the third week. They held the ranking for two weeks.

- Last season, Clemson climbed as high as No. 10 by ESPN/USA Softball and finished No. 17 last season.
- The first RPI of the 2022 season has Clemson at No. 21 and No. 45 on 2022 strength of schedule.

### STANDOUT MOMENTS

- Opening weekend, Clemson only played 23 innings after run-ruling opponents in three games - two during the fifth inning and one in the sixth.
- Sophomores Regan Spencer and Millie Thompson threw Clemson's first combined no-hitter against Kent State, a five-inning run-rule victory.
- Sophomore McKenzie Clark hit the program's first inside the park home run against Akron on Feb. 26 dropping a ball into right center. She crossed home two steps ahead of throw reaching the plate.
- Freshman Aby Vieira recorded her first collegiate home run with a grand slam out of right center against Akron. The grand slam was Clemson's first of the season.
- Freshman Maddie Moore hit her first collegiate homer on Saturday as well with a two-run shot out of left field.

### FIRST 100

- Clemson softball will play its 100th game in program history on March 12 in the 4 p.m. matchup against Illinois at the Tiger Invitational - contingent on weather.
- The 100th game will be played almost five years to the date of the program being announced - program addition was announced on March 14, 2017.
- Through the first 100 games, the softball team is pacing itself to tie the best start by any program at Clemson. Women's tennis is the lone sport with more wins currently. Other sports at Clemson can be found below.
- Among current Clemson head coaches through their 100 games, Coach Rittman has already solidified himself as the coach with the best record after defeating Gardner-Webb on March 1.
- Rittman has recorded 75 wins to surpass baseball's Monte Lee and football's Dabo Swinney, who each held a 74-26 record through 100 games.

### FIRST 100 GAMES - BY PROGRAM

Sport (1st Year)	Wins	Loss	Ties	Percentage
Women's Tennis (1976)	78	22	-	.780
Softball (2020)	75	22	-	.773
WBasketball (1975-76)	73	37	-	.730
Women's Soccer (1994)	69	29	2	.700
Volleyball (1977)	68	32	-	.680
Men's Soccer (1934)	63	27	10	.680
Baseball (1896)	60	36	4	.620
Football (1896)	58	34	8	.620
MBasketball (1911-12)	55	44	1	.555
Men's Tennis (1921)	47	48	5	.495

### CAGLE CALLS GAME

- Prior to 2022, Cagle was named a Preseason First Team All-American by D1Softball and Softball America.
- At the St. Pete/Clearwater Elite Invitational, Cagle opened the weekend with a five-inning run rule victory over Texas Tech.
- She followed the TTU game with a nine inning performance in the circle to defeat No. 18/15 Tennessee. She struck out 13 batters en route to earning the victory.

### CLEMSON AT A GLANCE

Overall Record:	12-6
ACC Record:	0-3
Home Record:	5-3
Away Record:	2-0
Neutral Record:	5-3
Streak:	L3
Last 5 Games:	2-3
Last 10 Games:	7-3
Day Record:	7-3
Night Record:	5-3

### HEAD COACH JOHN RITTMAN

Third Season at Clemson:	75-22 (.773)
ACC Record (Regular Season):	34-9 (.791)
21st Year Overall:	825-373-3 (.688)

### CLEMSON HISTORY

All-Time:	75-22
All-Time Record, Home:	42-9
All-Time Record, Away:	19-5
All-Time Record, Neutral:	14-8

### VS MERCER

All-Time:	N/A
Last Clemson Win:	N/A
Last Mercer Win:	N/A
Streak:	N/A

### VS LIBERTY

All-Time:	N/A
Last Clemson Win:	N/A
Last Liberty Win:	N/A
Streak:	N/A

### VS ILLINOIS

All-Time:	N/A
Last Clemson Win:	N/A
Last Illinois Win:	N/A
Streak:	N/A

\*Note: A full 2022 schedule is available on the second page  
 \*Note to media members: Credential requests for home games at McWhorter Stadium open on the preceeding Monday of each game. Requests can be made at [ClemsonTigers.com/softball](http://ClemsonTigers.com/softball) under Media Resources.

Stats and notes are updated going into series only

# NOTES

## 2022 SCHEDULE

Date	Day	Opponent (Rank)	Watch	Time/Result
2-10	Thu	\$ at FGCU	Youtube	W, 11-0 (5)
2-11	Fri	\$ Kent State	N/A	W, 8-0 (5)
2-11	Fri	\$ Texas	N/A	L, 0-4
2-12	Sat	\$ LIU	N/A	W, 8-0 (6)
2-13	Sun	\$ Boston College	N/A	Canceled
2-17	Thu	% Texas Tech	ACCN	W, 8-0 (5)
2-18	Fri	% Tennessee	ESPN+	W, 4-3 (9)
2-19	Sat	% Northwestern	ACCN	L, 0-7
2-19	Sat	% Wisconsin	ESPN+	L, 1-2 (8)
2-20	Sun	% Washington	ESPN	W, 2-0
2-23	Wed	at Charlotte	ESPN+	W, 5-2
2-25	Fri	# Boston University	ACCNX	W, 8-0 (5)
2-25	Fri	# St. Francis	ACCNX	W, 2-0
2-26	Sat	# Akron	ACCNX	W, 10-5
2-26	Sat	# Boston University	ACCNX	W, 7-3
3-1	Tue	Gardner-Webb	ACCNX	W, 6-0
3-4	Fri	* Virginia Tech	ACCN	L, 1-6
3-5	Sat	* Virginia Tech	ACCNX	L, 0-4
3-6	Sun	* Virginia Tech	ACCNX	L, 2-4
3-9	Wed	Mercer	ACCNX	6 p.m.
3-12	Sat	! Liberty	ACCNX	1:30 p.m.
3-12	Sat	! Illinois	ACCNX	4 p.m.
3-13	Sun	! Illinois	ACCNX	12:30 p.m.
3-13	Sun	! Liberty	ACCNX	3 p.m.
3-16	Wed	Winthrop	ACCNX	6 p.m.
3-18	Fri	* at Duke	ACCNX	6 p.m.
3-19	Sat	* at Duke	ACCNX	2 p.m.
3-20	Sun	* at Duke	ACCN	2 p.m.
3-23	Wed	at Georgia	SECN	6 p.m.
3-25	Fri	* Louisville	ACCNX	6 p.m.
3-26	Sat	* Louisville	ACCN	5 p.m.
3-27	Sun	* Louisville	ACCNX	12 p.m.
3-30	Wed	South Carolina	ACCN	7 p.m.
4-1	Fri	* at North Carolina	ACCNX	6 p.m.
4-2	Sat	* at North Carolina	ACCNX	2 p.m.
4-3	Sun	* at North Carolina	ACCNX	1 p.m.
4-6	Wed	Furman	ACCNX	4 p.m.
4-6	Wed	Furman	ACCNX	6 p.m.
4-8	Fri	* at Pittsburgh	ACCN	5 p.m.
4-9	Sat	* at Pittsburgh	ACCNX	1 p.m.
4-10	Sun	* at Pittsburgh	ACCNX	12 p.m.
4-12	Tue	at South Carolina	ESPN	6 p.m.
4-14	Thu	* Notre Dame	ACCNX	6 p.m.
4-15	Fri	* Notre Dame	ACCNX	6 p.m.
4-16	Sat	* Notre Dame	ACCNX	1 p.m.
4-21	Thu	* at Florida State	ESPN2	9 p.m.
4-22	Fri	* at Florida State	ACCN	6 p.m.
4-23	Sat	* at Florida State	ACCN	2 p.m.
4-27	Wed	ETSU	ACCNX	6 p.m.
4-29	Fri	* Georgia Tech	ACCNX	6 p.m.
4-30	Sat	* Georgia Tech	RSN	1 p.m.
5-1	Sun	* Georgia Tech	ACCNX	12 p.m.
5-11 - 5-14	^	ACC Championship	ACCN	TBA
5-19 - 5-22	&	NCAA Regionals	TBA	TBA
5-26 - 5-29	&	NCAA Super Regionals	TBA	TBA
6-2 - 6-9	&	NCAA Women's College World Series	TBA	TBA

Note: Home games in **bold**; all times are Eastern  
 \* - ACC regular-season game  
 \$ - FGCU Kickoff Classic (Fort Myers, Fla.)  
 % - St. Pete/Clearwater Elite Invitational (Clearwater, Fla.)  
 # - Clemson Classic (Clemson, S.C.)  
 ! - Tiger Invitational (Clemson, S.C.)  
 ^ - ACC Championship (Louisville, Ky.)  
 & - NCAA Tournament (Oklahoma City, Okla.)

- Cagle threw a complete-game shutout against the No. 6/5 Huskies with 10 strikeouts and hit a solo homer in the sixth inning to upset Washington.
- Last season, Cagle became the first softball player in ACC history to be named both the Player and Freshman of the Year.
- She was named a NFCA Second Team All-American, a NFCA National Freshman of the Year Top-3 finalist and a USA Softball Collegiate Player of the Year Top 10 Finalist last season.

### TOP 25 VICTORIES

- The Tigers defeated two top 25 programs at the St. Pete/Clearwater Elite Invitational in No. 18/15 Tennessee an No. 6/45 Washington.
- Clemson took Tennessee to nine innings en route to earning the 4-3 win with six players recording a hit, including Marissa Guimbarda hitting a solo blast out of left field.
- Clemson picked up its first top-10 victory defeating the No. 6/5 Washington Huskies in seven innings on the final day of the 2022 St. Pete/Clearwater Elite Invitational.
- Valerie Cagle earned both wins in the circle. She threw all 9.0 innings with 13 strikeouts against Tennessee and a complete 7.0 inning game against the Huskies, picking up 10 strikeouts and limiting them to only four hits.
- The Washington win was Clemson's first seven-inning win this season and handed the Huskies their first loss.

### GUIMBARDA GREATNESS

- Graduate Marissa Guimbarda has been a key contributor to Clemson's offense over the past three seasons.
- Prior to her time in the Orange and Regalia, Guimbarda played two seasons at Furman.
- Most recently, Guimbarda hit her 52nd career home run against Gardner-Webb. She is currently ranked fifth among action players in the NCAA for most home runs in her career.
- She hit 24 while at Furman and has 27 at Clemson.
- Guimbarda becomes the 196th player in NCAA Division I history to hit 50 homers during her collegiate career.

### RUSS' RECORDS

- Graduate transfer Sam Russ comes to Clemson to use her final year of eligibility that was awarded due to COVID-19 cutting the 2020 season short.
- Russ decided to use her extra year at Clemson after her father played baseball for the Tigers 1980-83.
- Russ spent her first four years at NC State where she was a three-time ACC selection and holds the Wolf-pack's record for both career (103) and single season (32) stolen bases.
- She currently ranks first in the NCAA among active players for most career stolen bases (112).

### RUSS CAREER MILESTONES

Category	Next Milestone	Needed	Career Total
At-bats	600	43	557
Runs	150	13	137
Hits	200	22	178
RBI	75	18	57
Walks	100	13	87
Stolen Bases	125	13	112

Includes both Clemson and NC State totals

### ACC PRESEASON HONORS

- The Tigers have been picked to finish second in the ACC
- Clemson pitcher Valerie Cagle and outfielder McKenzie Clark were named to the 2022 Preseason All-ACC Team based on vote by the league's head coaches.

- Cagle returns after being named the ACC Player and Freshman of the Year in 2021. She batted .404 with a .821 slugging percentage and 17 home runs. She also led the Tigers with a 1.16 ERA and 267 strikeouts.
- Clark had a breakout freshman season posting a .355 average and .639 slugging percentage. She stole a team-high 23 bases in 2021 and was an NFCA All-Region Selection.

### CONSISTENT CAMMY

- Cammy Pereira has been a consistent presence since signing to join Clemson's inaugural class being the Tigers' go-to face of the program in different situations.
- Pereira was recently recognized at the Clemson Board Meeting as a notable student-athlete having been the driving force to multiple Clemson initiatives including but not limited to: being the leader of the Tigers Unite affinity group CU Pride, spoken at several panels regarding issues in the LGBTQ community, participating in Clemson academic research, is a Paw Pal mentor and a student liaison for the We CU Committee for staff engagement.
- Following her time at Clemson, Pereira will attend medical school at Via College of Osteopathic Medicine beginning in July.
- Pereira became the third softball player at Clemson to be awarded the Weaver-James-Corrigan postgraduate scholarship by the ACC.
- On the field this season, Pereira has started every game at second base and is batting .300 with eight runs score and seven RBIs.

### PITCHER PROWESS

- Despite being young, Clemson's pitching staff proves they are up for any battle.
- The Tigers have four consistent pitchers that have pitched a minimum of 18 innings in 2022 with at least two wins- Valerie Cagle (49.1 - 5), Millie Thompson (25.1 - 2), Brooke McCubbin (25.0 - 2) and Regan Spencer (18.1 - 3).
- As a group, they are posting a 1.71 ERA with 110 strikeouts through 119 innings and have limited opponents to a .238 average or lower.
- Cagle has appeared in 12 games with three complete performances, two solo shutouts and two saves.
- Freshman Brooke McCubbin has been a solid relief pitcher for the Tigers with four combined shutouts.
- Thompson came back even stronger for her second year in the Orange and Regalia clocking 25 strikeouts in seven appearances.
- Spencer has been Clemson's hidden threat appearing in only eight games but has one solo shutout, two combined and has struck out 12 batters. She has only allowed eight hits this season and hasn't allowed a run, earned or unearned, to cross home while in the circle.
- Spencer is limiting opponents to a .131 average at the plate and only given up five walks.

### YOUNG PROGRAM

- The Clemson softball team has accomplished multiple feats for being a program with less than 100 games.
- The only players with over 100 collegiate games under their belt are transfers from other programs that include: Sam Russ, Marissa Guimbarda, Cammy Pereira, Grace Mattimore and Bailey Taylor.
- The remaining 24 players on the 2022 roster have appeared in less than 100 games led by Valerie Cagle clocking in at 97.
- The Tigers won the ACC Regular Season Title in their first complete season in 2021 after the 2020 inaugural season was cut short due to COVID-19.
- In only their second season, the Tigers also competed in the ACC Championship game and at the Tuscaloosa Regional.



# NOTES

## HISTORICAL TIMELINE

- March 14, 2022 marks the five-year anniversary since former Clemson Director of Athletics Dan Radakovich announced the addition of the softball program.
- View part of the timeline of events in the provided table and the complete list on [ClemsonTigers.com/softball](http://ClemsonTigers.com/softball).

## CLEMSON+

- Clemson Athletics and IPTAY have launched Clemson+, a streaming service dedicated to showing what it's like to be a Tiger.
- Clemson+ showcases the best video content, and is now available on all major streaming platforms, via the [ClemsonTigers.com](http://ClemsonTigers.com) app and web browser.
- The subscription will be included as an exclusive benefit to more than 26,000 IPTAY and Collegiate Club members.
- Clemson softball will be apart of the initial launch of Clemson+ with a Clemson Softball All-Access feature.
- Get an inside look at the day-to-day aspects of the Clemson softball program and exclusive interviews with the coaching staff and student-athletes.
- Check out select previews with head coach John Rittman as he sits down with Don Munson for "Inside the Circle."

## POWER: WOMEN'S LEADERSHIP ACADEMY

- Director of Athletics Graham Neff and Senior Associate AD/Senior Woman Administrator Stephanie Ellison-Johnson announced the formation of the POWER: Women's Leadership Academy in early February.
- The women's leadership academy is a three-pronged women's leadership program with curriculum developed by Assistant AD for Student-Athlete Development Tori Niemann and Dr. Janna Magette Butler, Clemson Athletic Leadership Graduate Program Lecturer.
- The year-long program focuses on identity, professional presence, self-leadership and community, along with an annual experiential trip.
- The leadership summit is an opportunity for POWER participants to design, organize and execute a transformational leadership experience for their Clemson female student-athlete peers.
- Softball has two current student-athletes in Power's inaugural class: Morgan Johnson and Alia Logoleo.

## LEGACY - BLACK HISTORY MONTH

- February allowed us to shine a spotlight on the many contributions, successes and challenges of African Americans at Clemson.
- The next iteration will feature student-athletes and staff members talking about an inspirational Black person in their lives.
- Clemson softball's own Morgan Johnson's has penned a letter to Jackie Robinson about his influence and the impact he has had on her career in the sports community.
- Her feature is now live on [ClemsonTigers.com](http://ClemsonTigers.com). View it on the main page under "My Story."
- More features can be found on [ClemsonTigers.com/bhm-2022](http://ClemsonTigers.com/bhm-2022)

## FALL ACADEMIC SUCCESS

- Clemson University student-athletes earned a 3.19 cumulative GPA in the Fall 2021 semester, the seventh consecutive semester greater than 3.0, and the third-highest ever.
- Clemson softball set a program-record 3.48 GPA in the fall of 2021.
- Clemson's department-wide graduation success rate (GSR) also hit a record of 95 percent in the most recent release.

## CLEMSON SOFTBALL TIMELINE

Date	Note
3/14/17	Clemson announces addition of softball program
10/6/17	Softball stadium receives initial construction approval
11/3/17	John Rittman selected as program's first head coach
11/8/17	Clemson signs first softball signee
12/4/17	Kyle Jamieson joins softball staff
11/10/18	Courtney Breault joins softball staff
11/24/18	Jeannie Murphy joins softball staff
2/2/19	Clemson Softball Stadium breaks ground
7/9/19	Topping Out Ceremony
7/9/19	ACC and Big Ten announce Clemson as host site for 2020 Big Ten/ACC Challenge
8/26/19	Held first round of individual practices
9/17/19	Held first official team practice
9/30/19	Held first team practice on field of Clemson Softball Stadium
10/2/19	First scrimmage against Erskine College at Southern Wesleyan University
11/11/19	Clemson announces inaugural spring schedule
12/3/19	The team and coaching staff officially announce move into the facility full time
1/24/20	Ribbon-Cutting ceremony
1/25/20	Inaugural Fan Day
2/7/20	Clemson defeats St. John's, 6-2, in its inaugural game at UCF's Black & Gold Tournament in Orlando, Fla.
2/12/20	Clemson held its inaugural home opener in a doubleheader against Western Carolina - RHP Logan Caymol threw a complete game no-hitter in the nightcap for the Tiger's first no-hitter in program history
2/15/20	Clemson defeated Maryland 21-2 at Clemson Softball Stadium - Bailey Taylor and Valerie Cagle hit grand slams in the bottom of the second to make Clemson the seventh program in NCAA Division-I history to record at least two grand slams in a single inning
2/18/20	Valerie Cagle and Logan Caymol swept ACC Player and Pitcher of the Week awards, respectively. It was the only instance in which two freshmen won both awards in the same week.
3/1/20	Clemson won its first-ever ACC series sweeping Virginia at the Clemson Softball Stadium
3/3/20	Clemson received first votes in national poll - 10 from NFCA
3/12/20	NCAA announced cancellation of season due to COVID-19 - Clemson's inaugural season ends with a 19-8 record
2/5/21	Clemson University Board of Trustees announced the renaming of Clemson Softball Stadium to McWhorter Stadium
2/21/21	Clemson won its first true road series and first-ever ACC road series in a 3-0 sweep at Georgia Tech
3/1/21	Clemson received its first top-25 ranking at No. 15 according to D1Softball.com
3/9/21	Clemson cracked NFCA poll for the first time at No. 25
3/27/21	Clemson earned highest ranked win against then-No. 11 Duke live on ACC Network. Clemson snapped Duke's then-20 game winning streak, the second-longest winning streak by any D1 softball team at that point.
4/21/21	Clemson shutout in-state rival South Carolina, 6-0, in Columbia in first ever meeting between both programs
5/9/21	In final game of the 2021 regular season, Clemson clinched the ACC regular-season title with a 19-2 win over Syracuse. The Tigers became the first team in league history to earn the regular-season title in any team's first complete season.
5/15/21	Clemson made its first appearance in the ACC title game
5/16/21	Clemson secured its first NCAA Regional berth
5/21/21	Clemson secured its first NCAA Regional win in an 8-0 run-rule victory over Troy
2/7/22	Clemson receives its first preseason ranking being ranked in the top-15 by all major polls
2/20/22	Clemson upsets No. 6/5 Washington, 2-0, for the first win over a top-10 opponent

\*A full list of Clemson history can be found on [ClemsonTigers.com](http://ClemsonTigers.com)

## TIGER TIDBITS

Category	Record
Record	12-6
ACC Record	0-3
Non-Conference Record	12-3
Versus Top 25 (NFCA)	2-4
Versus Top 10 (NFCA)	1-4
Versus Top 5 (NFCA)	--
In February	11-3
In March	1-3
In April	--
In May	--
On Monday	--
On Tuesday	1-0
On Wednesday	1-0
On Thursday	2-0
On Friday	4-2
On Saturday	3-3
On Sunday	1-1
In Day Games	7-2
In Night Games	5-3
In 1-Run Games	1-1
In 2-Run Games	2-1
In 5+ Run Games	7-2
After a Loss	2-3
After a Win	9-3
In Extra Innings	1-1
Shutouts	8-3
Scoring First	11-1
Scoring in the 1st Innings	6-0
Leading After 4	10-1
Trailing After 4	0-4
Tied After 4	2-1
Leading After 5	6-1
Trailing After 5	0-4
Tied After 5	2-1
Leading After 6	7-1
Trailing After 6	0-5
Tied After 6	--
Scoring 5 or More Runs	9-0
Allowing 5 or More	1-2
Out-hit opponent	11-1
Opponent out-hit	0-4
Hits are equal	1-1
Make 0 errors	6-1
Make 1 error	5-2
Make 2+ error	1-3
Opp. makes 0 errors	2-2
Opp. makes 1 error	4-2
Opp. makes 2+ errors	6-2

## MEDIA SERVICES

### CLEMSON ATHLETIC COMMUNICATIONS

Contact	Valerie Johnson (Central Michigan '18)
Email	<a href="mailto:vjohns4@clemson.edu">vjohns4@clemson.edu</a>
Cell Phone	712-269-4149
Ticket Office Phone	1-800-CLEMSON
Website	<a href="http://ClemsonTigers.com">ClemsonTigers.com</a>
Social Media	ClemsonSoftball

### ACC MEDIA RELATIONS

Justin Wilson is the softball athletic communications contact at the ACC office. He can be reached at 336.369.3713 or at [jwilson@acc.org](mailto:jwilson@acc.org).

### CREDENTIALS

Members of the working press who desire a media credential to a Clemson softball home game [ClemsonTigers.com/softball](http://ClemsonTigers.com/softball) under Media Resources. There is limited space for writers inside McWhorter Stadium. Members of the media must request a pass at least 24 hours prior to each game to be considered for admittance.

### WEBSITE & SOCIAL MEDIA

Up-to-date stats, notes, stories and box scores can be found on [ClemsonTigers.com](http://ClemsonTigers.com)'s official website ([ClemsonTigers.com](http://ClemsonTigers.com)). Live online video, live audio and live stats can be accessed on the [ClemsonTigers.com](http://ClemsonTigers.com) softball schedule page. Fans can also follow [ClemsonSoftball](https://twitter.com/ClemsonSoftball) on Twitter, Instagram and Facebook.

# NOTES

## SEASON TICKETS SOLD OUT

- The Clemson community continues to show its unwavering support to the Clemson softball team through ticket sales.
- Season tickets were sold out prior to the New Year, and IPTAY members and the general public have done their part by snapping up single-game tickets during the first week of February when they went on sale.
- Tickets for every game during the regular-season at McWhorter recently sold out after limited tickets were left available.

## UPCOMING

- Clemson hosts Illinois and Liberty for four games, two against each opponent, at the Tiger Invitational. Games begin Saturday, March 12 at 1:30 p.m.

## ADDITIONAL MEDIA RESOURCES

- More information and a digital version of this set of game notes can be found by scanning the QR Code.



## CLEMSON VS. RANKED TEAMS

2020						
Date	Opponent	CU NFCA, ESPN	Opp. NFCA, ESPN	W-L	Score	
2-26	Georgia	NR	14, 15	W	4-1	
2021						
Date	Opponent	CU NFCA, ESPN	Opp. NFCA, ESPN	W-L	Score	
2-18	* Virginia Tech	RV, N/A	14, 15	W	8-1	
2-19	* Virginia Tech <sup>(1)</sup>	RV, N/A	14, 15	L (5)	0-9	
2-19	* Virginia Tech <sup>(2)</sup>	RV, N/A	14, 15	L	1-4	
3-26	* Duke <sup>(1)</sup>	20, 21	11, 12	L	0-2	
3-26	* Duke <sup>(2)</sup>	20, 21	11, 12	L	1-3	
3-27	* Duke	20, 21	11, 12	W	4-1	
3-28	* Duke	20, 21	11, 12	W	4-2	
5-14	^ Virginia Tech	13, 10	20, 20	W	2-0	
5-15	^ Duke	13, 10	21, 21	L	0-1	
5-22	! Alabama	13, 10	3, 3	L	0-6	
5-23	! Alabama	13, 10	3, 3	L	0-5	
2022						
Date	Opponent	CU NFCA, ESPN	Opp. NFCA, ESPN	W-L	Score	
2-11	Texas	15, 14	10, 8	L	0-4	
2-18	Tennessee	15, 12	18, 15	W (9)	4-3	
2-19	Northwestern	15, 12	RV, 23	L	0-7	
2-20	Washington	15, 12	6, 5	W	2-0	
3-4	* Virginia Tech	14, 9	6, 6	L	0-6	
3-5	* Virginia Tech	14, 9	6, 6	L	0-4	
3-6	* Virginia Tech	14, 9	6, 6	L	2-4	

**Bold** denotes home game  
\* - ACC regular-season game; ^ - ACC Championship; ! - Regionals

Total	7-12
Home	4-7
Away	0-2
Neutral	3-3
Non-Conference	3-4
ACC Only	4-8

## LAST TIME..

OFFENSE	
Hit two HRs in a game	Valerie Cagle (vs. Troy, 5/21/21)
Hit three HRs in a game	Alia Logoleo (at Syracuse, 5/9/21)
Hit two HRs in an inning	
Hit grand slam	Aby Vieira (Akron, 2/26/22)
Leadoff HR [inning]	Valerie Cagle (Virginia Tech, 3/6/22)
Walkoff HR	
Walkoff HR [run rule]	Alia Logoleo (Boston U, 2/25/22)
Pinch-hit HR	
Inside the Park HR	McKenzie Clark (Akron, 2/26/22)
HR in back-to-back games	Marissa Guimbarda (Charlotte 2/23, BU 2/25/22)
Back-to-back HRs	Valerie Cagle & Marissa Guimbarda (Gardner-Webb, 3/1/22)
Two doubles in a game	Alia Logoleo (at Charlotte, 2/23/22)
Three doubles in a game	N/A
Two triples in a game	N/A
Hit for the cycle	N/A
Four hits in a game	McKenzie Clark (Akron 2/26/22)
Drove in five runs	Valerie Cagle (at Syracuse, 5/8/21)
Drove in six runs	Valerie Cagle (at FGCU, 2/10/22)
Drove in seven runs	N/A
Drove in eight runs	Valerie Cagle (Maryland, 2/15/20)
Drove in 10 runs	Alia Logoleo (at Syracuse, 5/9/21)
Scored four runs	Alia Logoleo (at Syracuse, 5/9/21)
Walkoff hit [non-HR]	JoJo Hyatt (vs Texas Tech, 2/17/22 -- triple)
Walkoff [non-hit]	Maddie Moore (vs Tennessee, 2/18/22 -- error)
Walkoff [pinch hitter]	
PITCHING	
Threw a no-hitter	Valerie Cagle (7.0 IP, Boston College, 4/18/21)
Threw a combined no-hitter	Regan Spencer & Millie Thompson (5.0 IP, vs. Kent State, 2/11/22)
Threw a perfect game	N/A
Threw a solo shutout	Regan Spencer (St. Francis, 2/25/22)
Had 14 strikeouts	Valerie Cagle (Georgia Tech, 5/13/21)
Had 13 strikeouts	Valerie Cagle (vs Tennessee, 2/18/22)
Had 12 strikeouts	Valerie Cagle (vs Villanova, 2/21/20)
Had 11 strikeouts	Valerie Cagle (Winthrop, 4/13/21)
Had 10 strikeouts	Valerie Cagle (vs No. 6/5 Washington, 2/20/22)
Pitched >7 innings	Valerie Cagle (9.0 IP, vs. Tennessee, 2/18/22)
TEAM	
Won 10 straight games	2021 (19: Mar. 27 - May 8)
Won 15 straight games	2021 (19: Mar. 27 - May 8)
Won 20 straight games	N/A
Extra-Innings victory	2/18/22, No. 15 Clemson 4, No. 18 Tennessee 3 (9 Inn.)
Extra-Innings loss	2/19/22, No. 15 Clemson 1, Wisconsin 2 (8 Inn.)
Played 11 innings	3/19/21, No. 23 Clemson 4, at Louisville 0
Played 10 innings	N/A
Played nine innings	2/18/22, No. 15 Clemson 4, No. 18 Tennessee 3
Played eight innings	2/22/20, Clemson 8, Stetson 6
Was no-hit	N/A
Was shut out	3/6/22, No. 6 Virginia Tech 4, No. 14 Clemson 0
Beat a ranked opponent	2/20/22, No. 15 Clemson 2, No. 6 Washington 0
Beat a top-10 opponent	2/20/22, No. 15 Clemson 2, No. 6 Washington 0
Beat a top-10 ACC opponent	N/A
Run-ruled a ranked opponent	N/A
Tied an opponent	N/A

## TEAM SUPERLATIVES

OFFENSE	
At bats	34, at Charlotte (Feb. 23)
Runs scored	11, at FGCU (Feb. 10)
Hits	13, at Charlotte (Feb. 23)
RBI	11, at FGCU (Feb. 10)
Doubles	6, at Charlotte (Feb. 23)
Triples	2, vs. Texas Tech (Feb. 17)
Home runs	2, 4 times
Walks	7, 2x, Akron (Feb. 26)
Strikeouts	13, Virginia Tech (Mar. 6)
Sac flies	1, 3x, Virginia Tech (Mar. 6)
Stolen bases	3, 4 times
Hit by pitch	3, vs. Kent State (Feb. 11)
FIELDING	
Putouts	27, vs. Tennessee (Feb. 18)
Assists	14, St. Francis (Feb. 25)
Errors	4, Virginia Tech (Mar. 5)
DPs turned	2, St. Francis (Feb. 25)
PITCHING	
Innings pitched	9.0, vs. Tennessee (Feb. 18)
Runs allowed	7, vs. Northwestern (Feb. 19)
Earned runs	6, Virginia Tech (Mar. 4)
Walks allowed	4 at Charlotte (Feb. 23)
Strikeouts	13, 2x, Gardner-Webb (Mar. 1)
Hits allowed	11, 2x, Virginia Tech (Mar. 5)

## PLAYER SUPERLATIVES

OFFENSE	
At bats	5, 2x, McKenzie Clark (vs. Tennessee - Feb. 18)
Runs scored	4, McKenzie Clark (at FGCU - Feb. 10)
Hits	4, McKenzie Clark (Akron - Feb. 26)
RBI	6, Valerie Cagle (at FGCU - Feb. 10)
Doubles	2, Alia Logoleo (at Charlotte - Feb. 23)
Triples	1, 6 times
Home runs	1, 15 times
Walks	3, Valerie Cagle (Akron - Feb. 26)
Strikeouts	3, 3x, Marissa Guimbarda (Virginia Tech - Mar. 6)
Sac flies	1, 3x, Sam Russ (Virginia Tech - Mar. 6)
Stolen bases	2, 3x, Sam Russ (Gardner-Webb - Mar. 1)
Hit by pitch	2, Bailey Taylor (vs. Kent State - Feb. 11)
FIELDING	
Putouts	13, JoJo Hyatt (vs. Tennessee - Feb. 18)
Assists	6, Valerie Cagle (vs. Tennessee - Feb. 18)
Errors	2, 2x, Sam Russ (Virginia Tech - Mar. 6)
PITCHING	
Innings pitched	9.0, Valerie Cagle (vs. Tennessee - Feb. 18)
Runs allowed	7, Brooke McCubbin (vs. Northwestern - Feb. 19)
Earned runs	6, Valerie Cagle (Virginia Tech - Mar. 4)
Walks allowed	3, 4 times
Strikeouts	13, Valerie Cagle (vs. Tennessee - Feb. 18)
Hits allowed	9, 2x, Valerie Cagle (Virginia Tech - Mar. 4)

## WEEKLY POLLS

2022						
Date	W-L	NFCA	ESPN	D1	SA	
2-7	0-0	15	14	14	14	
2-15	3-1	15	12	13	14	
2-22	6-3	15	9	13	12	
3-1	11-3	14	9	13	11	
3-8	12-6	17	17	17	17	
2021						
Date	W-L	NFCA	ESPN	D1	SA	
2-8	0-0	RV <sup>(9)</sup>	---	---	---	
2-15	2-0	RV <sup>(6)</sup>	RV	---	---	
2-22	6-2	RV <sup>(25)</sup>	RV	---	---	
3-1	9-2	RV <sup>(31)</sup>	RV	25	---	
3-8	13-2	25	RV	25	24	
3-15	16-2	23	25	25	22	
3-22	20-2	20	21	23	21	
3-29	22-4	18	19	23	20	
4-5	26-4	18	18	20	19	
4-12	26-4	17	18	19	19	
4-17	32-4	16	16	18	16	
4-26	37-4	13	13	15	13	
5-3	37-4	13	11	15	13	
5-10	40-5	13	10	16	13	
5-17	42-6	13	10	17	14	
6-10	44-8	18	17	19	22	

Note: Clemson's all-time rankings can be found in the Clemson softball record book.

# ROSTER

## NUMERICAL

#	Player	Pos.	B/T	Yr.	Ht.	Hometown	Previous School / High School
1	Rachel Gibson	RHP	R-R	Fr.	5-9	Ringgold, Ga.	Heritage HS
2	Brooke McCubbin	RHP/INF	R-R	Fr.	5-10	Locust Grove, Ga.	Locust Grove HS
3	Sam Russ	OF	L-R	+Gr.	5-8	Charlotte, N.C.	NC State / Providence Day HS
4	Aby Vieira	C/UTL	L-R	Fr.	5-9	Mission Viejo, Calif.	Mission Viejo HS
5	Ansley Houston	INF	R-R	So.	5-6	Grantville, Ga.	Newnan HS
6	Carlee Shannon	OF	R-R	**So.	5-7	Chester, S.C.	York Comprehensive HS
7	McKenzie Clark	OF	R-R	So.	5-5	Myakka City, Fla.	Lakewood Ranch HS
8	Grace Hiller	INF/OF	R-R	Fr.	5-9	Macon, Ga.	Tattal Square Academy
9	Sarah Howell	C/UTL	R-R	So.	5-4	Oxford, Ala.	Oxford HS
10	Emma Whitfield	RHP	L-R	*So.	5-9	Toccoa, Ga.	Stephens County HS
11	Haylee Whitesides	RHP/INF	R-R	Fr.	5-5	Duncan, S.C.	Byrnes HS
12	Cammy Pereira	INF/OF	L-R	**Gr.	5-6	Winston-Salem, N.C.	Furman University / West Forsyth HS
13	Abi Stuart	C/UTL	R-R	*So.	5-9	Snow Camp, N.C.	Southern Alamance HS
15	Madison May	OF/INF	R-R	*So.	5-9	Valdosta, Ga.	Lowndes HS
16	Alia Logoleo	INF/OF	R-R	*So.	5-8	Nashville, Tenn.	Hillsboro HS
17	Regan Spencer	RHP	R-R	So.	5-11	Lexington, N.C.	North Davidson HS
18	Bailey Taylor	INF	R-R	*Gr.	5-7	Winnsboro, S.C.	Troy University / Richard Winn Academy
19	Jaden Cheek	INF/OF	R-R	So.	5-9	Carnesville, Ga.	Franklin County HS
21	Jadelyn Ruskowski	INF	L-L	Fr.	5-8	Lithia, Fla.	Newsome HS
23	JoJo Hyatt	C	R-R	**So.	5-8	Buford, Ga.	Buford HS
24	Arielle Oda	OF/INF	L-R	**So.	5-4	Buford, Ga.	Buford HS
25	Marissa Guimbarda	UTL	R-R	*Gr.	5-6	Suwanee, Ga.	Furman University / Lambert HS
27	Grace Mattimore	C/UTL	R-R	*Gr.	5-7	Ashburn, Va.	Army West Point / Broad Run HS
28	Maddie Moore	INF	R-R	Fr.	5-7	Loomis, Calif.	Del Oro HS
42	Morgan Johnson	OF	R-R	*So.	6-1	Evans, Ga.	Evans HS
58	Kyah Keller	INF	R-R	*So.	6-0	Hollywood, Ala.	Battle Ground Academy
72	Valerie Cagle	P/UTL	L-R	*So.	5-9	Yorktown, Va.	Homeschooled
77	Hannah Goodwin	INF	R-R	**Fr.	5-8	West Columbia, S.C.	White Knoll HS
87	Millie Thompson	LHP/INF	L-L	So.	5-7	Bedford, Va.	Liberty HS

**Head Coach:** John Rittman (3rd season • New Mexico State '86)  
**Associate Head Coach:** Kyle Jamieson (3rd season • Brock University '97, Nipissing University '98)  
**Assistant Coach:** Courtney Breault (3rd season • Nebraska '13, Clemson '21)  
**Volunteer Assistant Coach:** Reese Jacobs (3rd season • Georgia Southern '79, Tennessee '81)  
**Graduate Assistant Coach:** Alyssa Bilodeau (1st season • Jacksonville '21)  
**Director of Operations:** Jeannie Murphy (3rd season • Oklahoma '10, Concordia University Irvine '14)  
**Student Manager:** Amanda Fitzwilliam (2nd season • Clemson '24)  
**Student Manager:** Anna Johnson (1st season • Clemson '23)  
**Student Manager:** Olivia Turpin (1st season • Clemson '24)  
**Associate AD/Sport Supervisor:** Natalie Honnen (3rd season • University of Florida '03 & '05)  
**Athletic Trainer:** Katie Rovtar (3rd season • University of Toledo '06, Virginia Tech '08)  
**Strength & Conditioning Coach:** Ryan Metzger (3rd season • University of Wisconsin-Oshkosh '11, University of Kentucky '15)  
**Athletic Communications Contact:** Valerie Johnson (1st season • Central Michigan '18)  
**Academic Advisor:** Kayla Velasquez (1st season • Bowling Green '17, Northwestern State '19)  
**Assistant Director of Equipment:** Ben Miller (3rd season • Clemson '16 & '18)  
**Supervisor of Athletic Grounds:** Mike Echols (3rd season • Clemson '85)

\* - one redshirt; + - transfer using extra year of eligibility granted due to Covid-19; Note: "Gr." denotes senior unless otherwise noted.

## ALPHABETICAL

#	Player	Pos.	Cl.
72	Valerie Cagle	RHP/UTL	*So.
19	Jaden Cheek	INF/UTL	So.
7	McKenzie Clark	OF	So.
1	Rachel Gibson	RHP	Fr.
77	Hannah Goodwin	INF	*So.
25	Marissa Guimbarda	OF/UTL	*Sr.
8	Grace Hiller	INF/OF	Fr.
5	Ansley Houston	INF	So.
9	Sarah Howell	C/UTL	So.
23	JoJo Hyatt	C	**So.
42	Morgan Johnson	OF	*So.
58	Kyah Keller	INF	*So.
16	Alia Logoleo	OF	*So.
27	Grace Mattimore	C/UTL	*So.
15	Madison May	INF/OF	*So.
2	Brooke McCubbin	RHP/INF	Fr.
28	Maddie Moore	INF	Fr.
24	Arielle Oda	INF/OF	**So.
12	Cammy Pereira	INF/OF	**Sr.
3	Sam Russ	OF	+Gr.
29	Jaden Ruskowski	INF	Fr.
6	Carlee Shannon	OF	**So.
17	Regan Spencer	RHP	So.
13	Abi Stuart	C/UTL	So.
18	Bailey Taylor	INF	*So.
87	Millie Thompson	LHP/INF	So.
4	Aby Vieira	C/UTL	Fr.
11	Haylee Whitesides	RHP/INF	Fr.
10	Emma Whitfield	RHP	*So.

## PRONUNCIATIONS

#	Name	Pronunciation
4	Aby Vieira	vee-AIR-uh
12	Cammy Pereira	puh-RAYR-uh
16	Alia Logoleo	lo-guh-LAY-oh
21	Jadelyn Ruskowski	russ-COW-ski
24	Arielle Oda	OH-duh
25	Marissa Guimbarda	GUHM-bar-duh
87	Millie Thompson	MILL-ee
	Kyle Jamieson	pronounced like, "Jamison"
	Courtney Breault	BREE-ahit
	Katie Rovtar	ROHV-tahr

## PRESEASON HONORS

- #1 RACHEL GIBSON • RHP • FR.**
  - One of Top 75 Impact Freshmen by D1Softball.com
- #2 BROOKE MCCUBBIN • RHP/INF • FR.**
  - Softball America ACC Top Newcomer to Watch
- #7 MCKENZIE CLARK • OF • SO.**
  - Preseason All-ACC selection
- #25 MARISSA GUIMBARDA • UTL • \*GR.**
  - No. 91 on Extra Innings Softball's Extra Elite 100 List
  - No. 82 on Softball America's 2022 Preseason College Top 100 list
- #72 VALERIE CAGLE • RHP/UT • \*SO.**
  - Preseason All-ACC selection
  - USA Softball Collegiate Player of the Year Top 50 Watch List
  - No. 6 on Extra Innings Softball's Extra Elite 100 list
  - No. 19 on Softball America's 2022 Preseason College Top 100 list
  - Preseason D1Softball.com ACC Player of the Year
  - Preseason D1Softball.com First Team All-American
  - Preseason Softball America First Team All-American
  - D1Softball.com Preseason Top 10 Pitcher Power Rankings

## HOME RUNS

#	Player <sup>(#)</sup>	Opponent (Date)	OB	Inn.	Outs
1.	Pereira <sup>(1)</sup>	\$ at FGCU (2-10)	0	2	0
2.	Cagle <sup>(1)</sup>	\$ at FGCU (2-10)	2	5	1
3.	Logoleo <sup>(1)</sup>	\$ vs. Kent State (2-11)	2	1	2
4.	Cagle <sup>(2)</sup>	\$ vs. LIU (2-12)	2	6	2
5.	Guimbarda <sup>(1)</sup>	% vs. No. 18 Tennessee (2-18)	0	3	2
6.	Cagle <sup>(3)</sup>	% vs. No. 6 Washington (2-20)	0	6	2
7.	Guimbarda <sup>(2)</sup>	at Charlotte (2-23)	1	4	0
8.	Guimbarda <sup>(3)</sup>	# Boston University (2-25)	1	2	0
9.	Logoleo <sup>(2)</sup>	# Boston University (2-25)	1	5	1
10.	Vieira <sup>(1)+</sup>	# Akron (2-26)	3	1	2
11.	Clark <sup>(1)+</sup>	# Akron (2-26)	0	3	2
12.	Moore <sup>(1)</sup>	# Boston University (2-26)	1	3	2
13.	Cagle <sup>(4)</sup>	Gardner-Webb (3-1)	2	3	0
14.	Guimbarda <sup>(4)</sup>	Gardner-Webb (3-1)	0	3	0
15.	Cagle <sup>(5)</sup>	* Virginia Tech (3-6)	0	7	0

+ - Grand Slam  
 ++ - Inside the Park Home Run

## CAREER MILESTONES

Upcoming Milestone	Has	Needs
Marissa Guimbarda 60 home runs	*52	8
Marissa Guimbarda 175 RBIs	*152	23
Cammy Pereira 100 runs	*81	19
Cammy Pereira 25 stolen bases	*22	3
Sam Russ 150 runs	*137	13
Sam Russ 125 stolen bases	*112	13
Valerie Cagle 150 hits	117	33
Valerie Cagle 50 home runs	32	18
McKenzie Clark 75 runs	60	15
McKenzie Clark 50 stolen bases	26	24
Alia Logoleo 75 hits	61	14
Alia Logoleo 50 RBIs	48	2
JoJo Hyatt 50 hits	44	6
JoJo Hyatt 50 RBIs	26	24
Valerie Cagle 400 Innings Pitched	355.2	44.1
Valerie Cagle 450 strikeouts	415	35
Valerie Cagle 50 wins	42	8
Millie Thompson 100 strikeouts	95	5
Regan Spencer 50 strikeouts	32	18

\*Clemson and Previous School Combined

# HEAD COACH JOHN RITTMAN



**John Rittman**, a longtime head coach and member of the USA Softball Women's National Team coaching pool, was named the first Head Coach of Clemson Softball on Nov. 3, 2017. Rittman came to Clemson after serving as the Associate Head Coach at the University of Kansas from 2015-17. Rittman joined the Jayhawks after 18 seasons as the Head Coach at Stanford University and 10 years on the United States National Team coaching staff (2001-08, 2016-18).

During the second season and first complete year, Rittman propelled Clemson to even higher heights by becoming the ACC Regular Season Champions after posting a 29-5 ACC record and winning seven ACC series, including six series sweeps. The Tigers were ACC Tournament Runner-Ups after shutting out both Georgia Tech and then-No. 20 Virginia Tech in the first two rounds before dropping the championship game, 1-0, to then-No. 21 Duke. Rittman was named ACC Coach of the Year and guided Valerie Cagle to being the first student-athlete in league history to be named both the ACC Freshman and Player of the Year in the same season. Clemson finished with six individuals earning nine All-ACC team selections following the regular season, including three on the first team. Cagle and freshman McKenzie Clark were named to the NFCA All-Region team. The honors continued to roll in for Cagle as she became the first Clemson softball All-American garnering second team honors from the NFCA, was a JWOS First Team All-American, a Top-Three Finalist for the NFCA's National Freshman of the Year and a Top-10 Finalist for USA Softball's Collegiate Player of the Year. Behind Rittman's efforts, Clemson climbed as high as No. 13 in the NFCA national rankings and No. 10 in the ESPN/USA Softball rankings before finishing the season at No. 18 in the NFCA poll. Rittman led the Tigers to their first postseason appearance traveling to the Tuscaloosa Regional to defeat Troy twice, including a five-inning run-rule victory in the opening game that capped off a historic second season.

In its inaugural season, Rittman transcended Clemson into a nationally-respected program. Rittman guided Clemson, which was predicted to finish in 10th in the conference, according to the 2020 ACC preseason poll, to a 19-8 overall record, including 5-1 in ACC play. The Tigers, who won both of their ACC series against Virginia and Pitt, won 11 of their final 12 games before the 2020 season was cut short due to the coronavirus pandemic (COVID-19). Additionally, Clemson went 14-2 at Clemson Softball Stadium (now McWhorter Stadium), which included a 13-game home win streak that spanned 25 days. Rittman and the Tigers generated plenty of enthusiasm among the Clemson faithful as the first-year program ranked fourth nationally in attendance (24,860) and fifth in average attendance (1,544/game) in 2020. On March 3, the National Fastpitch Coaches Association (NFCA) announced the first-year program received votes (10) in the fifth edition of the 2020 USA Today/NFCA D1 Top 25 Coaches Poll. The announcement came after Clemson defeated then-No. 14 Georgia, 4-1, on Feb. 26 at Clemson Softball Stadium before sweeping the Cavaliers to win its first-ever ACC series. Under the direction of Rittman, three Tigers in Valerie Cagle (twice), Marissa Guimbarda and Logan Caymol earned

ACC weekly honors on four occasions, the most by any ACC program in 2020. Cagle, a true freshman in 2020, was second in the nation in RBIs (36), while Guimbarda finished the season fourth nationally in home runs (11). Both Cagle and Guimbarda led the ACC in RBIs and home runs, respectively.

At Stanford, Rittman and the Cardinals recorded 18-consecutive winning seasons, made 16-straight NCAA appearances, notched 13 40-win seasons and produced at least one All-American in 15 of his last 17 seasons. As head coach, Rittman accumulated a 750-351-3 overall mark, coached a national player of the year, 16 All-Americans, earned five Super Regional appearances, two Women's College World Series appearances and maintained a spot in every regular-season NFCA top-25 poll for more than a decade.

Rittman served on the staff of the USA Softball team which won gold at both the 2016 Women's Softball World Championship and the 2017 Pan Am Qualifier. He also worked with Team USA from 2001-08, coaching the 2004 Olympic gold medal winners in Athens and the 2008 silver medalists in Beijing. Team USA also won gold medals at the 2002 and 2006 World Championship and the 2003 and 2007 Pan Am Games.

Prior to being named head coach at Stanford, Rittman spent four seasons as an assistant coach at the University of Washington, focusing on hitting and defense. Rittman helped start the program and, within just four seasons, the Huskies had earned a No. 1 national ranking, won the 1996 Pac-10 Championship, made three NCAA Tournament appearances and notched a runner-up finish in their first trip to the Women's College World Series. Washington became the first team since Texas A&M (1983) to advance to the championship game in its first appearance at the WCWS.

Before his appointment at Washington, Rittman spent two seasons as an assistant at the University of Minnesota. During his second year, the Golden Gophers won the Big Ten Conference with a 20-4 league record. The Gophers set team and individual records in almost every offensive category. The Minnesota squad led the nation in hits and total bases en route to a No. 15 national ranking. Rittman also helped produce two Golden Gopher All-Americans.

From 1988-90, Rittman was an assistant coach at the University of Oregon. During his stay, the Ducks played in the 1989 Women's College World Series, set several team and individual offensive records and produced an All-American.

Rittman graduated from New Mexico State with a degree in journalism in 1986. He was a three-year letterwinner in baseball as an outfielder at NMSU after transferring from Yavapai Junior College in Prescott, Arizona.

Rittman and his wife, Lorie, a former softball player at the University of Oklahoma, are the parents of Justin, a UCLA graduate and former fullback for the Bruins, and Jake, a senior punter at Notre Dame.

## HEAD COACH JOHN RITTMAN

**Education:** Bachelor's degree in journalism at New Mexico State (1986).

**Playing Experience:** Three-year letterman at New Mexico State (1984-86).

**Coaching Experience:** Assistant Coach at Oregon (1988-90) ... Assistant Coach at Minnesota (1991-92) ... Assistant Coach at Washington (1993-96) ... Head Coach at Stanford (1997-2014) ... Associate Head Coach at Kansas (2015, 2017) ... Head Coach at Clemson (2020-present).

**Family:** Wife, Lorie Rittman ... sons, Justin and Jake.



### RITTMAN'S HEAD COACHING RECORD

Year	School	W-L	NCAA
1997	Stanford	31-27-1	
1998	Stanford	41-18	Regionals
1999	Stanford	40-25	Regionals
2000	Stanford	45-18	Regionals
2001	Stanford	54-16-1	World Series
2002	Stanford	44-20	Regionals
2003	Stanford	41-26	Regionals
2004	Stanford	49-19	World Series
2005*	Stanford	43-16	Super Regionals
2006	Stanford	42-18	Super Regionals
2007	Stanford	35-21-1	Regionals
2008	Stanford	49-15	Super Regionals
2009	Stanford	48-11	Super Regionals
2010	Stanford	37-19	Regionals
2011	Stanford	42-17	Super Regionals
2012	Stanford	40-19	Regionals
2013	Stanford	39-21	Regionals
2014	Stanford	30-25	
2020^	Clemson	19-8	N/A
2021*	Clemson	44-8	Regionals
2022	Clemson	12-6	

\* - conference champion; ^ - season suspended March 12 and later canceled due to a coronavirus (COVID-19) pandemic

### RITTMAN'S HEAD COACHING RECORD

School	Seasons	Years	W-L	Win %
Stanford	18	1997-2014	750-351-3	.681
Clemson	3	2020-22	75-22	.795
<b>Totals</b>	<b>21</b>	<b>1997-2014, 2020-22</b>	<b>825-373-3</b>	<b>.689</b>

### RITTMAN VS. ACC AS CLEMSON HEAD COACH

Team	Overall	Home	Away	Neutral
Boston College	4-0	4-0	0-0	0-0
Duke	2-4	2-2	0-0	0-2
Florida State	0-0	0-0	0-0	0-0
Georgia Tech	4-0	0-0	3-0	1-0
Louisville	4-0	0-0	4-0	0-0
North Carolina	4-0	4-0	0-0	0-0
NC State	4-0	4-0	0-0	0-0
Notre Dame	0-0	0-0	0-0	0-0
Pittsburgh	2-1	2-1	0-0	0-0
Syracuse	3-1	0-0	3-1	0-0
Virginia	7-0	3-0	4-0	0-0
Virginia Tech	2-5	1-5	0-0	1-0
<b>Totals</b>	<b>37-11</b>	<b>20-8</b>	<b>14-1</b>	<b>2-2</b>

**Note:** Clemson's neutral-site games against Duke (Feb. 7, 2020) was not considered an ACC contest towards the league's standings.

# 2022 BROADCAST SHEET

1



## RACHEL GIBSON

Fr. • RHP • 5-9 • Ringgold, Ga. • Heritage HS

	ERA	W-L	APP	CG	SHO	IP	SO
2022	99.00	0-0	1	0	0/0	0.0	0
Career	99.00	0-0	1	0	0/0	0.0	0

Season Highs: NP (22)

- Made first collegiate appearance against Akron
- D1 Softball Preseason Top 75 Impact Freshmen selection
- Prior to Clemson:
  - Two time GHSA 4A State Champion (2018, 2019)
  - Two time GHSA 4A Pitcher of the Year (2018, 2019)
  - Two time Best of Preps Softball Player of the Year (2018, 2019)
  - 2019 Georgia Dugout Club 4A Player of the Year

2



## BROOKE McCUBBIN

Fr. • RHP/INF • 5-10 • Locust Grove, Ga. • Locust Grove HS

	ERA	W-L	APP	CG	SHO	IP	SO
2022	1.12	2-1	10	0	0/4	25.0	11
Career	1.12	2-1	10	0	0/4	25.0	11

Season Highs: IP (5.1), SO (3), NP (110)

- Pitched season-high 5.1 innings vs. Northwestern
- Struck out three batters against LIU
- Prior to Clemson:
  - 2020 Georgia Softball Player of the Year
  - 2019 GACA State Pitcher of the Year
  - 2019 GADC State 5A Player of the Year
  - Two time Regional Pitcher of the Year (2018, 2019)

3



## SAM RUSS

+Gr. • OF • 5-8 • Charlotte, N.C. • NC State (Providence Day HS)

	AVG	AB	RUNS	HITS	RBI	BB	SB
2022	.321	56	10	18	3	7	9
Career	.320	557	137	178	57	87	112

Season Highs: R (2), H (3), RBI (2), 3B (1, 3x), SB (2, 3x)

- Finished with three hits and two RBIs against LIU
- Had a sac fly and one hit vs. Virginia Tech on March 6
- Has 112 stolen bases to lead the active NCAA players in career stolen bases
- Prior to Clemson:
  - Spent four seasons at NC State
  - Holds NC State's all-time record for career stolen bases (103) and single season record for stolen bases (32)

4



## ABY VIEIRA (VEE-AIR-UH)

Fr. • C/UTL • 5-9 • Mission Viejo, Calif. • Mission Viejo HS

	AVG	AB	RUNS	HITS	RBI	BB	SB
2022	.350	20	3	7	5	2	0
Career	.350	20	3	7	5	2	0

Season Highs: H (2, 2x), RBI (4), BB (1, 2x), R (1, 3x)

- Caught Spencer's and Thompson's combined no-hitter vs. Kent State
- Starting catcher in Clemson's upset over Washington
- Hit first collegiate double against Charlotte
- Recorded first collegiate grand slam (and homer) against Akron
- Also drew a walk against Akron.
- Appeared in a total of nine games this season

5



## ANSLEY HOUSTON

So. • INF • 5-6 • Grantville, Ga. • Newnan HS

	AVG	AB	RUNS	HITS	RBI	BB	SB
2022	.000	0	3	0	0	0	1
Career	.000	1	3	0	0	0	1

Season Highs: R (1, 3x), SB (1)

- Has appeared as a pinch runner in 10 games this season
- First collegiate stolen base against Virginia Tech (March 5)
- Scored her first collegiate run against Boston University on Feb. 25
- ACC Academic Honor Roll (2021)
- Prior to Clemson:
  - Set Newnan's home run (12) and RBI (42) single season records in 2019
  - Three time All-Region First Team (2016-18)

6



## CARLEE SHANNON

\*\*So. • OF • 5-7 • Chester, S.C. • York Comprehensive HS

	AVG	AB	RUNS	HITS	RBI	BB	SB
2022	.000	0	5	0	0	0	7
Career	.000	0	28	0	0	1	34

Season Highs: R (1, 5x), SB (1, 7x)

- Appeared in 14 games in 2022 as a pinch runner
- Holds the Clemson record for most consecutive stolen bases without being caught (19) - ended in Clearwater, Fla.
- Led the team in stolen-base percentage in 2021 (18-for-18)
- Her 18 stolen bases in 2021 were good for second on the team and tied for 10th in the ACC
- Started playing softball in high school after a career-ending gymnastics injury

7



## McKENZIE CLARK

So. • OF • 5-5 • Myakka City, Fla. • Lakewood Ranch HS

	AVG	AB	RUNS	HITS	RBI	BB	SB
2022	.296	54	13	16	6	7	3
Career	.341	223	60	76	35	26	26

Season Highs: R (4), H (4), RBI (2, 2x) 2B (1, 2x), SB (1, 3x)

- Scored four runs off two hits with two RBIs at FGCU
- Recorded Clemson's first inside the park home run against Akron
- Went 4-for-4 against Akron with one stolen base as well
- 2022 Preseason All-ACC selection
- NFCA All-Region Southeast selection
- First Team All-ACC and ACC All-Freshman Team
- Led the team with 23 stolen bases in 2021 and was sixth in the ACC

8



## GRACE HILLER

Fr. • INF/OF • 5-9 • Macon, Ga. • Tattal Square Academy

	AVG	AB	RUNS	HITS	RBI	BB	SB
2022	-	-	-	-	-	-	-
Career	-	-	-	-	-	-	-

Season Highs:

- Prior to Clemson:
  - First Team All-7A Region
  - Led her HS in batting average, doubles and runs scored
  - Set HS single season batting average record (.515) in 2020
  - Selected for the Georgia Dugout Club Senior All-State Game

# 2022 BROADCAST SHEET

9



## SARAH HOWELL

*So.* • C/UTL • 5-4 • Oxford, Ala. • Oxford HS

	AVG	AB	RUNS	HITS	RBI	BB	SB
2022	-	-	-	-	-	-	-
Career	.083	12	5	1	0	0	4

**Season Highs:**

- Out during 2022 season due to injury
- Appeared in 23 games in 2021
- Scored the Tigers' game-winning run in the Tigers' 5-4 win at Georgia Tech

10



## EMMA WHITFIELD

*\*So.* • RHP • 5-9 • Toccoa, Ga. • Stephens County HS

	ERA	W-L	APP	CG	SHO	IP	SO
2022	7.00	0-0	1	0	0	1.0	1
Career	3.54	4-0	16	1	0	29.2	26

**Season Highs:** IP (1.0), NP (20)

- Made first appearance of 2022 against Akron
- Appeared in four games in 2021
- Registered a 3.94 ERA in 5.1 innings pitched
- Two time ACC Academic Honor Roll
- Earned the program's first-ever conference win in the circle against Virginia (Feb. 28, 2020)

11



## HAYLEE WHITESIDES

*Fr.* • RHP/INF • 5-5 • Duncan, S.C. • Byrnes HS

	ERA	W-L	APP	CG	SHO	IP	SO
2022	-	-	-	-	-	-	-
Career	-	-	-	-	-	-	-

**Season Highs:**

- Prior to Clemson:
- Two time South Carolina 5A State Champion (2017, 2021)
- Two time member of the Spartanburg Herald Journal All-Area Team (2018, 2019)

12



## CAMMY PEREIRA (puh-RAYR-UH)

*\*\*Gr.* • INF/OF • 5-6 • Winston-Salem, N.C. • Furman (West Forsyth HS)

	AVG	AB	RUNS	HITS	RBI	BB	SB
2022	.300	50	8	15	7	3	0
Career	.305	489	81	149	55	18	22

**Season Highs:** R (2), H (3, 2x), HR (1), 2B (1, 4x), RBI (3)

- Hit Clemson first home run of the 2022 season at FGCU
- Tallied three RBIs off two hits vs. Kent State
- Went 3-for-4 against Charlotte and 3-for-3 against Boston U
- Hit two homers against Georgia Tech (May 13, 2021) in the quarterfinals of the ACC Championship in the Tigers' first postseason win in program history
- Leader of CU Pride - helped start the organization for LGBTQ and ally student-athletes and staff

13



## ABI STUART

*\*So.* • C/UTL • 5-9 • Snow Camp, N.C. • Southern Alamance HS

	AVG	AB	RUNS	HITS	RBI	BB	SB
2022	.000	4	1	0	0	1	0
Career	.243	107	15	26	19	8	0

**Season Highs:** R (1), BB (1)

- Has appeared in four games in 2022 (DP in 2, PR in 1, PH 1)
- Scored one run against Kent State and drew a walk at FGCU
- Played in 36 games, starting in 31 in 2021
- Hit .259 in 85 at bats with 10 runs and a .447 slugging percentage
- Posted an eight-game hitting streak, the third longest streak by any Tiger on the season
- Two time ACC Academic Honor Roll recipient

15



## MADISON MAY

*\*So.* • INF/OF • 5-9 • Valdosta, Ga. • Lowndes HS

	AVG	AB	RUNS	HITS	RBI	BB	SB
2022	.238	21	2	5	4	5	0
Career	.167	30	2	5	4	6	0

**Season Highs:** AB (4), H (2), R (1, 2x), RBI (2), BB (2, 2x)

- Hit a RBI double against Charlotte
- Went 1-for-1 with a double, two RBIs, two walks and one run scored against Texas Tech
- Finished with two hits against Wisconsin
- Recorded first career hit and run against LIU
- Two time ACC Academic Honor Roll recipient
- Reached base on four-straight balls in only plate appearance of the 2021 season

16



## ALIA LOGOLEO (lo-GUH-LAY-oh)

*\*So.* • INF/OF • 5-8 • Nashville, Tenn. • Hillsboro HS

	AVG	AB	RUNS	HITS	RBI	BB	SB
2022	.306	49	9	15	11	3	1
Career	.296	206	38	61	48	18	15

**Season Highs:** R (2, 2x), H (3), 2B (2), HR (1, 2x), RBI (4)

- Started at either SS or 3B every game this season
- Recorded a double and homer against Kent State with four RBIs
- Hit two doubles against Charlotte
- Hit a walk-off home run
- Second Team All-ACC selection and ACC All-Freshman Team selection in 2021
- Hit two grand slams in 2021 (only player to record a grand slam last year)
- Hit a grand slam, a three-run homer, a two-run homer and a double at Syracuse

17



## REGAN SPENCER

*So.* • RHP • 5-11 • Lexington, N.C. • North Davidson HS

	ERA	W-L	APP	CG	SHO	IP	SO
2022	0.00	3-0	6	1	1/2	18.1	12
Career	1.03	9-0	20	3	2/3	61	32

**Season Highs:** IP (7.0), SO (4), NP (84)

- Earned her second victory in the circle this season with 7.0 innings vs. St. Francis
- Made two appearances against Virginia Tech to close out Friday and Sunday's games
- Threw Clemson's first combined no-hitter with Millie Thompson vs. Kent State
- Pitched 3.0 innings with four strikeouts against Kent State to earn the win
- Struck out three batters in 1.2 innings of work against Northwestern
- Earned the victory against Gardner-Webb after pitching 2.0 innings efficiently

# 2022 BROADCAST SHEET

18



## BAILEY TAYLOR

\*Gr. • INF • 5-7 • Winnsboro, S.C. • Troy (Richard Winn Academy)

	AVG	AB	RUNS	HITS	RBI	BB	SB
2022	.333	6	0	2	0	0	0
Career	.284	215	26	61	63	21	1

Season Highs: H (1, 2x), HPB (2)

- Has started in four games this season and appeared in 10
- Missed 2021 season due to injury
- Recorded Clemson's first run, sac fly and hit by pitch vs. St. John's (Feb. 7, 2020) and first double vs. Duke (Feb. 7, 2020) in program history
- Recorded a grand slam against Maryland helping Clemson become just the seventh program in NCAA Division I history to record two grand slams in a single inning

19



## JADEN CHEEK

So. • INF/UTL • 5-9 • Carnesville, Ga. • Franklin County HS

	AVG	AB	RUNS	HITS	RBI	BB	SB
2022	-	-	-	-	-	-	-
Career	.100	10	11	1	0	0	2

Season Highs:

- Has appeared in two games in 2022 as a pinch runner
- Appeared in 39 games in 2021
- Made first career start as the Tigers' designated player against Furman
- Recorded first career hit on a single to right field against Furman

21



## JADEYN RUSZKOWSKI (RUSS-COW-SKI)

Fr. • INF • 5-8 • Lithia, Fla. • Newsome HS

	AVG	AB	RUNS	HITS	RBI	BB	SB
2022	-	-	-	-	-	-	-
Career	-	-	-	-	-	-	-

Season Highs:

- Prior to Clemson:
- Two time District Champion
- Member of the 9A First Team All-State as a designated player
- Had a batting average of .652 as a junior in HS

23



## JOJO HYATT

\*\*So. • C • 5-8 • Buford, Ga. • Buford HS

	AVG	AB	RUNS	HITS	RBI	BB	SB
2022	.172	29	0	5	5	2	0
Career	.238	185	15	44	26	15	0

Season Highs: H (1, 5x), 3B (1), RBI (3), BB (1, 2x) PO (13)

- Has appeared in 12 games this season
- Hit the walk-off triple to run-rule Texas Tech to open the SPCEI with three RBIs
- Brought in two runners in Clemson's 4-3 win over Tennessee
- Started 50 games at catcher in 2021
- Hit .223 with four runs, a .266 slugging percentage and .291 on-base percentage
- Hit first career home run at Virginia (Mar. 7, 2021)
- Two time ACC Academic Honor Roll recipient

24



## ARIELLE ODA (OH-DUH)

\*\*So. • INF/OF • 5-4 • Buford, Ga. • Buford HS

	AVG	AB	RUNS	HITS	RBI	BB	SB
2022	.400	10	3	4	0	0	0
Career	.233	30	25	7	4	7	5

Season Highs: R (1, 3x), AB (2), H (1, 4x)

- Made a catch at the wall in right field and hit a single vs. Virginia Tech (3/6)
- Has appeared in 17 games this season
- Appeared in 46 games, including 14 starts in 2021
- Hit .143 with 10 runs scored last season
- Two time ACC Academic Honor Roll member
- Scored one of four runs in the sixth inning in the Tigers' 5-3 comeback win at Virginia (Mar. 6, 2021)

25



## MARISSA GUIMBARDA (GUHM-BAR-DUH)

\*Gr. • OF/UTL • 5-6 • Suwanee, Ga. • Furman (Lambert HS)

	AVG	AB	RUNS	HITS	RBI	BB	SB
2022	.275	51	8	14	15	8	0
Career	.306	493	76	151	152	72	2

Season Highs: R (2, 2x), H (2, 4x), RBI (3, 3x), BB (2, 2x)

- Recorded the hit that scored the first run in Clemson's win over Washington
- Recorded her 52nd career home run vs Gardner-Webb to become the 196th player in D1 history to accomplish the feat in her career
- Started in 48 games in 2021 and hit .309 with 21 runs, 13 homers, 42 RBI and a .669 slugging percentage
- Is a Weaver-James-Corrigan postgraduate scholarship award recipient (2021)
- No. 91 preseason player by Extra Innings Softball and No. 86 by Softball America

27



## GRACE MATTIMORE

\*Gr. • C/UTL • 5-7 • Ashburn, Va. • Army West Point (Broad Run HS)

	AVG	AB	RUNS	HITS	RBI	BB	SB
2022	.250	4	1	1	0	0	0
Career	.276	257	41	71	44	56	1

Season Highs: AB (1, 3x), 2B (1), R (1)

- Recorded a double and scored vs. Virginia Tech on March 6
- Played left field and had two at bats vs. Gardner-Webb
- Started in 40 games in 2021
- Is a Weaver-James-Corrigan postgraduate scholarship award recipient
- ACC Academic Honor Roll recipient
- Hit .333 in 66 at bats in 2020 and led the ACC with 10 doubles during the shortened COVID season

28



## MADDIE MOORE

Fr. • INF • 5-7 • Loomis, Calif. • Del Oro HS

	AVG	AB	RUNS	HITS	RBI	BB	SB
2022	.167	30	6	5	2	2	1
Career	.167	30	6	5	2	2	1

Season Highs: R (1, 6x), H (1, 5x), BB (1, 2x), SB (1), HR (1)

- Has started every game this season
- Recorded a hit and a run at FGCU on opening day
- Scored the winning run for Clemson vs. Tennessee and the first run for Clemson against Washington
- Hit first career home run against Boston University on 2/26
- Hit first collegiate double at Charlotte

# 2022 BROADCAST SHEET

42



## MORGAN JOHNSON

\*So. • OF • 6-1 • Evans, Ga. • Evans HS

	AVG	AB	RUNS	HITS	RBI	BB	SB
2022	-	-	-	-	-	-	-
Career	.288	52	9	15	18	8	4

Season Highs:

- Out during 2022 season due to injury
- Read her "My Story" feature on ClemsonTigers.com - Johnson penned a letter to Jackie Robinson for Black History Month
- Appeared in 30 games in 2021 and hit .350 in 40 at bats with a .725 slugging percentage
- Two time ACC Academic Honor Roll recipient
- Member of Clemson's POWER - a Women's Leadership Academy

58



## KYAH KELLER

\*So. • INF • 6-0 • Hollywood, Ala. • Battle Ground Academy

	AVG	AB	RUNS	HITS	RBI	BB	SB
2022	.286	14	0	4	1	2	0
Career	.250	108	7	27	18	8	0

Season Highs: H (1, 4x), RBI (1), BB (1, 2x)

- Pinch hit a RBI single against LIU to spur Clemson's eight-inning scoring run in the sixth
- Started all three games at first base against Virginia Tech
- Hit .256 in 90 at bats with six runs and a .367 slugging percentage
- Recorded two homers in CU's 12-1 win against North Carolina while going 3-for-3 with a career-best four RBI
- Two time ACC Academic Honor Roll member

72



## VALERIE CAGLE

\*So. • RHP/UTL • 5-9 • Yorktown, Va. • Homeschooled

	AVG	AB	RUNS	HITS	RBI	BB	SB
2022	.333	57	11	19	16	6	0
Career	.382	306	80	117	97	39	5

Season Highs: H (3, 2x), R (2, 2x), RBI (6), HR (1, 5x), HBP (1)

	ERA	W-L	APP	CG	SHO	IP	SO
2022	2.41	5-4	12	3	2/3	49.1	61
Career	1.59	42-17	71	37	13/5	355.2	415

Season Highs: IP (9.0), H (9), SO (13), BB (3, 3x)

- Tallied three hits and six RBIs at FGCU - including her first homer of the season
- Struck out 10 batters and hit a solo home run in Clemson's 2-0 upset over Washington
- Has a team-high 19 hits, five home runs and .649 slugging percentage
- Has pitched 49.1 innings with 61 strikeouts
- Preseason All-ACC selection and D1 Softball Preseason First Team All-American
- Pitched two complete-game no-hitters in 2021 in 6-0 win against Boston College and 9-0 win against Winthrop
- Joined Team USA's U-18 Junior Women's National Team

77



## HANNAH GOODWIN

\*\*Fr. • INF • 5-8 • West Columbia, S.C. • White Knoll HS

	AVG	AB	RUNS	HITS	RBI	BB	SB
2022	.000	2	0	0	0	0	0
Career	.357	84	15	30	16	5	1

Season Highs: AB (1, 2x)

- Made first appearance in 2022 as a pinch hitter vs. Charlotte
- Had one plate appearance against Gardner-Webb
- Missed 2021 season due to injury after being tabbed a 2021 Preseason All-ACC selection
- ACC Academic Honor Roll selection
- Started 26 games at shortstop in 2020
- Led the 2020 team with a .385 average during the shortened COVID season

87



## MILLIE THOMPSON (MILL-EE)

So. • LHP/INF • 5-9 • Snow Camp, N.C. • Liberty HS

	ERA	W-L	APP	CG	SHO	IP	SO
2022	1.38	2-1	7	0	0/3	25.1	25
Career	1.88	11-2	26	3	0/5	104.0	95

Season Highs: IP (6.0), H (7, 2x), SO (9), NP (89)

- Started and earned her first victory of the 2022 season against Charlotte
- Earned her second victory in as many games against Boston on Feb. 26
- Threw Clemson's first combined no-hitter with Regan Spencer vs. Kent State
- Struck out nine batters against Wisconsin - one shy of her career high
- Underwent successful surgery in December to correct a left forearm compartment syndrome injury
- 2021 ACC All-Freshman Team

## QUICK FACTS

Nickname	Tigers
Location	Clemson, S.C. 29633
Colors	Clemson Orange & Regalia
Founded	1889
Enrollment	27,341
President	Dr. James P. Clements (Maryland-Baltimore County '85)
Director of Athletics	Graham Neff (Georgia Tech '06)
Conference	Atlantic Coast Conference
Facility (Capacity)	McWhorter Stadium (1,616)
Year Opened	2020
Dimensions	LF - 200, CF - 220, RF - 205
Record Crowd	1,616
Head Coach	John Rittman (New Mexico State '86)
Record at Clemson	75-22 (3 <sup>rd</sup> season)
Overall Record	825-373-3 (21 <sup>st</sup> season)
Associate Head Coach	Kyle Jamieson (Brock '97 & Nipissing '98)
Assistant Coach	Courtney Breault (Nebraska '13, Clemson '21)
Volunteer Assistant Coach	Reese Jacobs (Georgia Southern '79)
Director of Operations	Jeannie Murphy (Oklahoma '10, Concordia '14)
Graduate Assistant	Alyssa Bilodeau (Jacksonville '21)
Athletic Trainer	Katie Rovtar (Toledo '06 & Virginia Tech '08)
Strength Coach	Ryan Metzger (Wisconsin-Oshkosh '11 & Kentucky '15)
Sport Administrator	Natalie G. Honnen (Florida '03 & '05)
First Year of Softball	2020
Season of Softball	Third

## ACC STANDINGS

SCHOOL	CONF	CPCT.	OVERALL	PCT.	STREAK
Duke	3-0	1.000	16-3	.842	W5
Virginia Tech	3-0	1.000	14-3	.824	W3
Florida State	2-1	.667	19-1	.950	L1
NC State	2-1	.667	18-3	.857	W1
Syracuse	1-2	.333	10-6	.625	L1
Pitt	1-2	.333	9-7	.562	W1
Notre Dame	0-0	.000	15-4	.789	W1
Boston College	0-0	.000	10-6	.625	L1
Louisville	0-0	.000	8-5	.615	W1
North Carolina	0-0	.000	12-9	.571	W2
Virginia	0-0	.000	12-9	.571	L1
Georgia Tech	0-3	.000	13-5	.722	L3
Clemson	0-3	.000	12-6	.667	L3

# 2022 TV ROSTER



**1**  
RACHEL GIBSON  
Fr. - RHP



**2**  
BROOKE McCUBBIN  
Fr. - RHP/INF



**3**  
SAM RUSS  
+Gr. - OF



**4**  
ABY VIEIRA  
Fr. - C/UTL



**5**  
ANSLEY HOUSTON  
So. - INF



**6**  
CARLEE SHANNON  
\*\*So. - OF



**7**  
MCKENZIE CLARK  
So. - OF



**8**  
GRACE HILLER  
Fr. - INF/OF



**9**  
SARAH HOWELL  
So. - C/UTL



**10**  
EMMA WHITFIELD  
\*So. - RHP



**11**  
HAYLEE WHITESIDES  
Fr. - RHP/INF



**12**  
CAMMY PEREIRA  
\*\*Gr. - INF/OF



**13**  
ABI STUART  
\*So. - C/UTL



**15**  
MADISON MAY  
\*So. - OF/INF



**16**  
ALIA LOGOLEO  
\*So. - OF/INF



**17**  
REGAN SPENCER  
So. - RHP



**18**  
BAILEY TAYLOR  
\*Gr. - INF



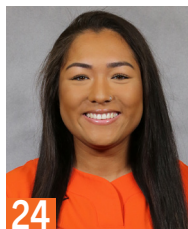
**19**  
JADEN CHEEK  
So. - INF/OF



**21**  
JADEYN RUSZKOWSKI  
Fr. - INF



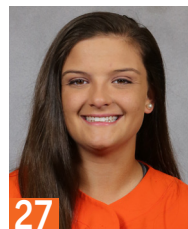
**23**  
JoJo HYATT  
\*\*So. - C



**24**  
ARIELLE ODA  
\*\*So. - OF/INF



**25**  
MARISSA GUIMBARDA  
\*Gr. - UTL



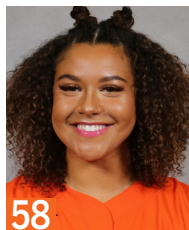
**27**  
GRACE MATTIMORE  
\*Gr. - C/UTL



**28**  
MADDIE MOORE  
Fr. - INF



**42**  
MORGAN JOHNSON  
\*So. - OF



**58**  
KYAH KELLER  
\*So. - INF



**72**  
VALERIE CAGLE  
\*So. - RHP/UTL



**77**  
HANNAH GOODWIN  
\*\*Fr. - INF



**87**  
MILLIE THOMPSON  
So. - LHP



**HC**  
JOHN RITTMAN  
3rd Season



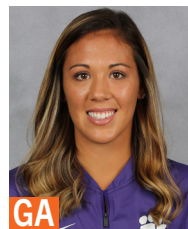
**AC**  
KYLE JAMIESON  
3rd Season



**AC**  
COURTNEY BREAUT  
3rd Season



**VC**  
REESE JACOBS  
3rd Season



**GA**  
ALYSSA BIODEAU  
1st Season



**DO**  
JEANNIE MURPHY  
3rd Season

# PLAYER HIGHS

## #1 RACHEL GIBSON

Career (Last)	Category	2022
	IP	
Same	Runs Allowed	4 (Akron 2/26)
Same	Earned Runs	3 (Akron 2/26)
	Walks Issued	
	Strikeouts	
Same	Hits Allowed	1 (Akron 2/26)
	Doubles Allowed	
	Triples Allowed	
	Homers Allowed	

## #2 BROOKE McCUBBIN

Career (Last)	Category	2022
	IP	5.1 (vs Northwestern 2/19)
Same	Runs Allowed	7 (vs Northwestern 2/19)
Same	Earned Runs	3 (vs Northwestern 2/19)
Same	Walks Issued	2, 2x (Virginia Tech 3/5)
Same	Strikeouts	3 (vs LIU 2/12)
Same	Hits Allowed	9 (vs Northwestern 2/19)
Same	Doubles Allowed	1, 2x (Boston U 2/26)
	Triples Allowed	
Same	Homers Allowed	1 (vs Northwestern 2/19)

## #3 SAM RUSS

Career (Last)	Category	2022
Same	Runs	2 (at FGCU 2/10)
Same	Hits	3 (vs LIU 2/12)
Same	RBI	2 (vs LIU 2/12)
Same	Doubles	1, 2x (vs Wisconsin 2/19)
Same	Triples	1, 3x (vs Texas Tech 2/17)
	Home Runs	
	Walks	2 (vs Wisconsin 2/19)
	HBP	
Same	Stolen Bases	2, 3x (Gardner-Webb 3/1)

## #4 ABY VIEIRA

Career (Last)	Category	2022
Same	Runs	1, 3x (Akron 2/26)
Same	Hits	2, 2x (Boston U 2/25)
Same	RBI	4 (Akron 2/26)
Same	Doubles	1 (at Charlotte 2/23)
	Triples	
	Home Runs	1 (Akron 2/26)
Same	Walks	1, 2x (Akron 2/26)
	HBP	
	Stolen Bases	

## #5 ANSLEY HOUSTON

Career (Last)	Category	2022
Same	Runs	1, 3x (Virginia Tech 3/4)
-	Hits	
-	RBI	
-	Doubles	
-	Triples	
-	Home Runs	
-	Walks	
-	HBP	
Same	Stolen Bases	1 (Virginia Tech 3/5)

## #6 CARLEE SHANNON

Career (Last)	Category	2022
1, 28x (Boston U 2/26/22)	Runs	1, 5x (Boston U 2/26)
-	Hits	
-	RBI	
-	Doubles	
-	Triples	
-	Home Runs	
-	Walks	
-	HBP	
2 (Winthrop 4/13/21)	Stolen Bases	1, 7x (Gardner-Webb 3/1)

## #7 McKENZIE CLARK

Career (Last)	Category	2022
4 (at FGCU 2/10)	Runs	4 (at FGCU 2/10)
4 (Akron 2/26/22)	Hits	4 (Akron 2/26)
3, 2x (North Carolina 4/3/21)	RBI	2, 2x (Boston U 2/26)
2, 2x (Duke 3/27/21)	Doubles	1, 2x (Gardner-Webb 3/1)
1, 7x (vs Tennessee 2/18/22)	Triples	1 (vs Tennessee 2/18)
1, 10x (Akron 2/26/22)	Home Runs	1 (Akron 2/26)
2, 3x ((Gardner-Webb 3/1/22)	Walks	2 (Gardner-Webb 3/1)
1, 8x (Virginia Tech 3/6/22)	HBP	1, 3x (Virginia Tech 3/6)
3 (Elon 2/27/21)	Stolen Bases	1, 3x (Akron 2/26)

## #8 GRACE HILLER

Career (Last)	Category	2022
	Runs	
	Hits	
	RBI	
	Doubles	
	Triples	
	Home Runs	
	Walks	
	HBP	
	Stolen Bases	

## #9 SARAH HOWELL

Career (Last)	Category	2022
1, 5x (North Carolina 4/3/21)	Runs	
1 (at North Florida 2/12/21)	Hits	
-	RBI	
-	Doubles	
-	Triples	
-	Home Runs	
-	Walks	
-	HBP	
2 (at Virginia 3/7/21)	Stolen Bases	

## #10 EMMA WHITFIELD

Career (Last)	Category	2022
5.0 (Charlotte 3/4/20)	IP	1.0 (Akron 2/26)
3 (vs St. John's 2/9/20)	Runs Allowed	1 (Akron 2/26)
3 (vs St. John's 2/9/20)	Earned Runs	1 (Akron 2/26)
3 (Pittsburgh 3/7/20)	Walks Issued	
3, 4x (Furman 3/13/21)	Strikeouts	1 (Akron 2/26)
5 (Charlotte 3/4/20)	Hits Allowed	2 (Akron 2/26)
2 (Maryland 2/15/20)	Doubles Allowed	
1 (Akron 2/26/22)	Triples Allowed	1 (Akron 2/26)
1, 5x (Winthrop 4/13/21)	Homers Allowed	

## #11 HAYLEE WHITESIDES

Career (Last)	Category	2022
	IP	
	Runs Allowed	
	Earned Runs	
	Walks Issued	
	Strikeouts	
	Hits Allowed	
	Doubles Allowed	
	Triples Allowed	
	Homers Allowed	

## #12 CAMMY PEREIRA

Career (Last)	Category	2022
3 (Maryland 2/15/20)	Runs	2 (vs Texas Tech 2/17)
3, 8x (Boston U 2/25/22)	Hits	3, 2x (Boston U 2/25)
3, 2x (vs Kent State 2/11/22)	RBI	3 (vs Kent State 2/11)
1, 11x (Boston U 2/25/22)	Doubles	1, 4x (Boston U 2/25)
1, 2x (North Carolina 4/2/21)	Triples	
2 (vs Georgia Tech 5/13/21)	Home Runs	1 (at FGCU 2/10)
2 (Boston College 4/17/21)	Walks	1, 3x (Virginia Tech 3/6)
2 (Virginia 2/28/20)	HBP	1, 4x (Akron 2/26)
1, 9x (vs Troy 5/21/21)	Stolen Bases	

## #13 ABI STUART

Career (Last)	Category	2022
3 (vs St. John's 2/9/20)	Runs	1 (vs Kent State 2/11)
2, 6x (Boston College 4/16/21)	Hits	
3, 3x (Winthrop 4/13/21)	RBI	
2 (Furman 3/12/21)	Doubles	
-	Triples	
1, 5x (North Carolina 4/2/21)	Home Runs	
2 (Western Carolina 2/12/20)	Walks	1 (at FGCU 2/10)
1, 2x (Boston College 4/17/21)	HBP	
-	Stolen Bases	

## #15 MADSION MAY

Career (Last)	Category	2022
Same	Runs	1, 2x (vs Texas Tech 2/17)
Same	Hits	2 (vs Wisconsin 2/19)
Same	RBI	2 (vs Texas Tech 2/17)
Same	Doubles	1, 2x (at Charlotte 2/23)
-	Triples	
-	Home Runs	
Same	Walks	2, 2x (vs Tennessee 2/18)
Same	HBP	1 (vs Tennessee 2/18)
-	Stolen Bases	

# PLAYER HIGHS

## #16 ALIA LOGOLEO

CAREER (LAST)	CATEGORY	2022
4 (at Syracuse 5/9/21)	Runs	2, 2x (Boston U 2/25)
4 (at Syracuse 5/9/21)	Hits	3 (Boston U 2/26)
10 (at Syracuse 5/9/21)	RBI	4 (vs Kent State 2/11)
2, 2x (at Charlotte 2/23/22)	Doubles	2 (at Charlotte 2/23)
1, 2x (Morgan State 2/23/20)	Triples	
3 (at Syracuse 5/9/21)	Home Runs	1, 2x (Boston U 2/25)
2 (Virginia 2/29/20)	Walks	1, 3x (Akron 2/26)
1, 6x (Virginia Tech 3/6/22)	HBP	1 (Virginia Tech 3/6)
2 (vs Virginia Tech 5/14/21)	Stolen Bases	1 (vs Texas Tech 2/17)

## #17 REGAN SPENCER

CAREER (LAST)	CATEGORY	2022
7.0, 2x (St. Francis 2/25/22)	IP	7.0 (St. Francis 2/25)
3 (Boston College 4/17/21)	Runs Allowed	
3 (Boston College 4/17/21)	Earned Runs	
3, 2x (vs Troy 5/22/21)	Walks Issued	2 (vs Kent State 2/11)
8 (at Louisville 3/20/21)	Strikeouts	4 (vs Kent State 2/11)
7 (at Georgia Tech 2/21/21)	Hits Allowed	5 (St. Francis 2/25)
2 (Boston College 4/17/21)	Doubles Allowed	
-	Triples Allowed	
1, 3x (at Louisville 3/20/21)	Homers Allowed	

## #18 BAILEY TAYLOR

CAREER (LAST)	CATEGORY	2022
3, 2x (Virginia 3/1/20)	Runs	
2, 4x (Pittsburgh 3/6/20)	Hits	1, 2x (Gardner-Webb 3/1)
4 (Maryland 2/15/20)	RBI	
1, 2x (Virginia 2/28/20)	Doubles	
-	Triples	
1, 2x (Pittsburgh 3/6/20)	Home Runs	
2 (Maryland 2/15/20)	Walks	
Same	HBP	2 (vs Kent State 2/11)
-	Stolen Bases	

## #19 JADEN CHEEK

CAREER (LAST)	CATEGORY	2022
1 (North Carolina 4/3/21)	Runs	
1 (Furman 3/23/21)	Hits	
-	RBI	
-	Doubles	
-	Triples	
-	Home Runs	
-	Walks	
-	HBP	
1, 2x (NC State 4/23/21)	Stolen Bases	

## #21 JADEYN RUSZKOWSKI

CAREER (LAST)	CATEGORY	2022
	Runs	
	Hits	
	RBI	
	Doubles	
	Triples	
	Home Runs	
	Walks	
	HBP	
	Stolen Bases	

## #23 JoJo HYATT

CAREER (LAST)	CATEGORY	2022
3 (Maryland 2/15/20)	Runs	
3 (at Syracuse 5/9/21)	Hits	1, 5x (Boston U 2/26)
3 (vs Texas Tech 2/17/22)	RBI	3 (vs Texas Tech 2/17)
1, 3x (at Syracuse 5/8/21)	Doubles	
1, 2x (vs Texas Tech 2/17/22)	Triples	1 (vs Texas Tech 2/17)
1 (at Virginia 3/7/21)	Home Runs	
2, 2x (Boston College 4/17/21)	Walks	1, 2x (vs Tennessee 2/18)
1, 3x (Furman 3/12/21)	HBP	
-	Stolen Bases	

## #24 ARIELLE ODA

CAREER (LAST)	CATEGORY	2022
2, 2x (Charlotte 3/4/20)	Runs	1, 3x (Boston U 2/26)
1, 6x (Virginia Tech 3/6/22)	Hits	1, 4x (Virginia Tech 3/6)
2 (Charlotte 3/4/20)	RBI	
1 (Boston U 2/25/22)	Doubles	1 (Boston U 2/25)
1 (Charlotte 3/4/20)	Triples	
-	Home Runs	
1, 7x (Charlotte 3/4/20)	Walks	
1, 3x (Gardner-Webb 3/1/22)	HBP	1 (Boston U 2/25)
1 (Michigan State 2/16/20)	Stolen Bases	

## #25 MARISSA GUIMBARDA

CAREER (LAST)	CATEGORY	2022
2, 7x (Akron 2/26/22)	Runs	2, 2x (Akron 2/26)
3, 3x (Furman 3/12/21)	Hits	2, 4x (Gardner-Webb 3/1)
5 (Charlotte 3/4/20)	RBI	3, 3x (Gardner-Webb 3/1)
2 (NC State 4/23/21)	Doubles	1, 4x (Gardner-Webb 3/1)
1 (Morgan State 2/23/20)	Triples	
2 (vs Troy 2/21/20)	Home Runs	1, 4x (Gardner-Webb 3/1)
3 (Virginia 2/28/20)	Walks	2, 2x (vs Kent State 2/11)
3 (at Georgia Tech 2/21/21)	HBP	1 (at Charlotte 2/23)
11 (at UNCG 2/18/20)	Stolen Bases	

## #27 GRACE MATTIMORE

CAREER (LAST)	CATEGORY	2022
2, 4x (North Carolina 4/2/21)	Runs	1 (Virginia Tech 3/6)
2, 9x (North Carolina 4/2/21)	Hits	1 (Virginia Tech 3/6)
4 (vs St. John's 2/9/20)	RBI	
2 (Charlotte 3/4/20)	Doubles	1 (Virginia Tech 3/6)
-	Triples	
1 (North Carolina 4/2/21)	Home Runs	
3, 2x (at Syracuse 5/8/21)	Walks	
2 (vs Illinois State 2/12/21)	HBP	
1 (vs Illinois State 2/12/21)	Stolen Bases	

## #28 MADDIE MOORE

CAREER (LAST)	CATEGORY	2022
Same	Runs	1, 6x (Boston U 2/26)
Same	Hits	1, 5x (Boston U 2/26)
Same	RBI	2 (Boston U 2/26)
Same	Doubles	1 (at Charlotte 2/23)
-	Triples	
Same	Home Runs	1 (Boston U 2/26)
Same	Walks	1, 2x (vs Texas 2/11)
-	HBP	
Same	Stolen Bases	1 (at FGCU 2/10)

## #58 KYAH KELLER

CAREER (LAST)	CATEGORY	2022
3 (North Carolina 4/2/21)	Runs	
3 (North Carolina 4/2/21)	Hits	1, 4x (Virginia Tech 3/5)
4 (North Carolina 4/2/21)	RBI	1 (vs LIU 2/12)
1, 2x (at Syracuse 5/9/21)	Doubles	
1 (NC State 4/23/21)	Triples	
2 (North Carolina 4/2/21)	Home Runs	
1, 8x (Virginia Tech 3/4/22)	Walks	1, 2x (Virginia Tech 3/4)
1, 3x (Gardner-Webb 3/1/22)	HBP	1 (Gardner-Webb 3/1)
-	Stolen Bases	

## #72 VALERIE CAGLE

CAREER (LAST)	CATEGORY	2022
3, 3x (vs Troy 5/21/21)	Runs	2, 2x (Akron 2/26)
4, 2x (Virginia 2/28/20)	Hits	3, 2x (at Charlotte 2/23)
8 (Maryland 2/15/20)	RBI	6 (at FGCU 2/10)
2 (Furman 3/13/21)	Doubles	1, 3x (Boston U 2/26)
1 (Duke 3/28/21)	Triples	
2, 6x (vs Troy 5/21/21)	Home Runs	1, 5x (Virginia Tech 3/6)
3, 2x (Akron 2/26)	Walks	3 (Akron 2/26)
1 (vs Kent State 2/11)	HBP	1 (vs Kent State 2/11)
1, 5x (Winthrop 4/13/21)	Stolen Bases	
11.0 (at Louisville 3/19/21)	IP	9.0 (vs Tennessee 2/18)
10 (vs Duke 2/7/20)	Runs Allowed	6 (Virginia Tech 3/4)
10 (vs Duke 2/7/20)	Earned Runs	6 (Virginia Tech 3/4)
6 (vs Georgia Tech 5/13/21)	Walks Issued	3, 3x (Virginia Tech 3/6)
14, 3x (vs Georgia Tech 5/13/21)	Strikeouts	13 (vs Tennessee 2/18)
10 (vs Duke 2/7/20)	Hits Allowed	9 (Virginia Tech 3/4)
3 (Virginia 2/28/20)	Doubles Allowed	1 (Virginia Tech 3/6)
1, 3x (vs Tennessee 2/18/22)	Triples Allowed	1 (vs Tennessee 2/18)
2, 2x (vs Tennessee 2/18/22)	Homers Allowed	2 (vs Tennessee 2/18)

## #77 HANNAH GOODWIN

CAREER (LAST)	CATEGORY	2022
2, 3x (Pittsburgh 3/6/20)	Runs	
3, 2x (vs Stetson 2/22/20)	Hits	
4 (vs St. John's 2/7/20)	RBI	
1, 5x (Pittsburgh 3/6/20)	Doubles	
-	Triples	
1, 4x (Pres. College 3/10/20)	Home Runs	
2 (Michigan State 2/16/20)	Walks	
1, 4x (Georgia 2/26/20)	HBP	
1 (at UNCG 2/18/20)	Stolen Bases	

## #87 MILLIE THOMPSON

CAREER (LAST)	CATEGORY	2022
7.0, 2x (North Carolina 4/2/21)	IP	6.0 (vs Wisconsin 2/19)
3, 5x (Virginia Tech 3/5/22)	Runs Allowed	3 (Virginia Tech 3/5)
3, 2x (NC State 4/23/21)	Earned Runs	2, 2x (Boston U 2/26)
3, 3x (vs. Troy 5/22/21)	Walks Issued	3 (at Charlotte 2/23)
10 (North Carolina 4/2/21)	Strikeouts	9 (vs Wisconsin 2/19)
8, 3x (NC State 4/23/21)	Hits Allowed	7, 2x (Virginia Tech 3/5)
2, 4x (Boston College 4/17/21)	Doubles Allowed	1, 4x (Virginia Tech 3/5)
-	Triples Allowed	
1, 6x (Boston U 2/26)	Homers Allowed	1 (Boston U 2/26)