



# GAME NOTES

# CLEMSON SOFTBALL

#TEAM3

## GAMES 28: CLEMSON AT GEORGIA

WEDNESDAY, MARCH 23

TURNER SOFTBALL STADIUM • ATHENS, GA.

### THIS WEEK

- Wednesday, March 23**
  - No. 16/15 Clemson at No. 17/21 Georgia - 7 p.m.
- Friday, March 25**
  - No. 16/15 Clemson vs. Louisville - 6 p.m.
- Saturday, March 26**
  - No. 16/15 Clemson vs. Louisville - 5 p.m.
- Sunday, March 27**
  - No. 16/15 Clemson vs. Louisville - 12 p.m.
- Where -**
  - Wednesday: Turner Softball Stadium | Athens, Ga.
  - Weekend Series: McWhorter Stadium | Clemson, S.C.
- Watch -** Wednesday's game will be available on the SEC Network. Friday and Sunday's games can be watched on ACCNX while Saturday's contest will be on the ACC Network.
- Live Stats -** [ClemsonTigers.com/softball/schedule](http://ClemsonTigers.com/softball/schedule)
- Social Media -** [ClemsonSoftball](https://www.facebook.com/ClemsonSoftball)

### CLEMSON OVERVIEW

- Clemson returns 21 players from last season to the 2022 roster and added eight newcomers.
- The Tigers finished a three-game series at Duke this past weekend taking one of three games.
- The Tigers are batting .273 as a team with a .439 slugging percentage and .359 on-base percentage.
- Clemson's pitching staff is posting a 1.85 ERA through 178 innings of work and struck out a combined 169 batters.

### GEORGIA OVERVIEW

- Georgia is led by first year head coach Tony Baldwin.
- The Bulldogs are batting .361 as a team with 239 runs scored off 269 hits, including 59 home runs. In the circle, the pitching staff holds a 3.05 ERA through 188.1 innings and struck out 218 batters.
- Jaiden Fields is batting .431 while holding a .535 on-base percentage. Sydney Chambley leads the team with 31 runs scored off 34 hits, including nine home runs. Defensively, Madison Kerpics holds a 1.50 ERA with a 9-1 record through 60.2 innings with 73 strikeouts.

### QUICK HITS

- Clemson has outscored opponents this season 120-60.
- The Tigers have run-ruled seven opponents this season: FGCU, Kent State, LIU, Texas Tech, Boston U, Winthrop and most recently No. 13/8 Duke.
- Clemson has 186 hits through 27 games, including posting 33 doubles and 22 home runs.
- The Tigers have 109 RBIs this season led by Valerie Cagle (21), Marissa Guimbarada (21), and Alia Logoleo (15).
- When Clemson scores in the first inning, the Tigers are 9-1. The Tigers have scored 21 runs in the first inning.
- The Tigers are 18-2 when scoring first this season no matter what inning.

### THE NATIONALLY RANKED TIGERS

- The latest USA Today/NFCA poll has Clemson at No. 16 moving up from No. 17 last week.
- ESPN/USA Softball has the Tigers clocking in at No. 15 for the third straight week.
- D1Softball.com has Clemson sitting at No. 19 and

Softball America rounds out the polls at No. 21.

- Clemson received its first single-digit ranking in program history clocking in at No. 9 on the ESPN/USA Softball poll during the third week. They held the ranking for two weeks.
- Last season, Clemson climbed as high as No. 10 by ESPN/USA Softball and finished No. 17 last season.
- The current RPI has Clemson at No. 13 and No. 13 on 2022 strength of schedule.

### STANDOUT MOMENTS

- Opening weekend, Clemson only played 23 innings after run-ruling opponents in three games - two during the fifth inning and one in the sixth.
- Sophomores Regan Spencer and Millie Thompson threw Clemson's first combined no-hitter against Kent State, a five-inning run-rule victory.
- Sophomore McKenzie Clark hit the program's first inside the park home run against Akron on Feb. 26 dropping a ball into right center. She crossed home two steps ahead of the throw reaching the plate.
- Freshman Aby Vieira recorded her first collegiate home run with a grand slam out of right center against Akron. The grand slam was Clemson's first of the season.
- Freshman Maddie Moore hit her first collegiate homer on Saturday as well with a two-run shot out of left field.
- The Tiger picked up two extra-innings victories at the Tiger Invitational, both against Liberty. Kyah Keller hit a walk off single in the eighth to bring home two runs to win the Sunday night game and Alia Logoleo reached on an error that brought home a run to win on Monday night.
- Valerie Cagle hit two home runs against Winthrop and Alia Logoleo hit one as Clemson run-ruled the Eagles in five innings in approximately 1:15 minutes.
- The Tigers defeated No. 13/8 Duke in run-rule fashion for another program first picking up a five-inning 10-2 win behind an eight strikeout performance from Millie Thompson in the circle.

### CONSISTENT CAMMY

- Cammy Pereira has been a consistent presence since signing to join Clemson's inaugural class being the Tigers' go-to face of the program in different situations.
- Pereira was recently recognized at the Clemson Board Meeting as a notable student-athlete having been the driving force to multiple Clemson initiatives including but not limited to: being the leader of the Tigers Unite affinity group CU Pride, spoken at several panels regarding issues in the LGBTQ community, participating in Clemson academic research, is a Paw Pal mentor and a student liaison for the We CU Committee for staff engagement.
- Following her time at Clemson, Pereira will attend medical school at Via College of Osteopathic Medicine beginning in July.
- Pereira became the third softball player at Clemson to be awarded the Weaver-James-Corrigan postgraduate scholarship by the ACC.
- On the field this season, Pereira has started every game at second base and leads the team with a .329 with 13 runs score and 10 RBIs.

### CLEMSON AT A GLANCE

Overall Record:	19-8
ACC Record:	1-5
Home Record:	11-3
Away Record:	3-2
Neutral Record:	5-3
Streak:	L1
Last 5 Games:	3-2
Last 10 Games:	7-3
Day Record:	12-4
Night Record:	7-4

### HEAD COACH JOHN RITTMAN

Third Season at Clemson:	82-24 (.786)
ACC Record (Regular Season):	35-11 (.791)
21st Year Overall:	832-375-3 (.688)

### CLEMSON HISTORY

All-Time:	82-24
All-Time Record, Home:	48-9
All-Time Record, Away:	20-7
All-Time Record, Neutral:	14-8

### VS GEORGIA

All-Time:	1-0
Last Clemson Win:	2/26/20, Clemson 4, Georgia 1
Last Georgia Win:	N/A
Streak:	W1

\*Note: A full 2022 schedule is available on the second page  
 \*Note to media members: Credential requests for home games at McWhorter Stadium open on the preceeding Monday of each game. Requests can be made at [ClemsonTigers.com/softball](http://ClemsonTigers.com/softball) under Media Resources.

### HOME RUNS

#	Player (#)	Opponent (Date)	OB	Inn.	Outs
1.	Pereira (1)	\$ at FGCU (2-10)	0	2	0
2.	Cagle (1)	\$ at FGCU (2-10)	2	5	1
3.	Logoleo (1)	\$ vs. Kent State (2-11)	2	1	2
4.	Cagle (2)	\$ vs. LIU (2-12)	2	6	2
5.	Guimbarada (1)	% vs. No. 18 Tennessee (2-18)	0	3	2
6.	Cagle (3)	% vs. No. 6 Washington (2-20)	0	6	2
7.	Guimbarada (2)	at Charlotte (2-23)	1	4	0
8.	Guimbarada (3)	# Boston University (2-25)	1	2	0
9.	Logoleo (2)	# Boston University (2-25)	1	5	1
10.	Vieira (1)+	# Akron (2-26)	3	1	2
11.	Clark (1)++	# Akron (2-26)	0	3	2
12.	Moore (1)	# Boston University (2-26)	1	3	2
13.	Cagle (4)	Gardner-Webb (3-1)	2	3	0
14.	Guimbarada (4)	Gardner-Webb (3-1)	0	3	0
15.	Cagle (5)	* Virginia Tech (3-6)	0	7	0
16.	Guimbarada (5)	! Illinois (3-13)	2	3	2
17.	Russ (1)	! Liberty (3-13)	0	1	1
18.	Cagle (6)	Winthrop (3-15)	0	1	2
19.	Logoleo (3)	Winthrop (3-15)	2	3	2
20.	Cagle (7)	Winthrop (3-15)	2	4	2
21.	Clark (2)	* at Duke (3-18)	0	6	0
22.	Russ (2)	* at Duke (3-20)	0	7	1

+ - Grand Slam  
 ++ - Inside the Park Home Run

Stats and notes are updated going into series only

# NOTES

## 2022 SCHEDULE

Date	Day	Opponent (Rank)	Watch	Time/Result
2-10	Thu	\$ at FGCU	Youtube	W, 11-0 (5)
2-11	Fri	\$ Kent State	N/A	W, 8-0 (5)
2-11	Fri	\$ Texas	N/A	L, 0-4
2-12	Sat	\$ LIU	N/A	W, 8-0 (6)
2-13	Sun	\$ Boston College	N/A	Canceled
2-17	Thu	% Texas Tech	ACCN	W, 8-0 (5)
2-18	Fri	% Tennessee	ESPN+	W, 4-3 (9)
2-19	Sat	% Northwestern	ACCN	L, 0-7
2-19	Sat	% Wisconsin	ESPN+	L, 1-2 (8)
2-20	Sun	% Washington	ESPNU	W, 2-0
2-23	Wed	at Charlotte	ESPN+	W, 5-2
2-25	Fri	# Boston University	ACCNX	W, 8-0 (5)
2-25	Fri	# St. Francis	ACCNX	W, 2-0
2-26	Sat	# Akron	ACCNX	W, 10-5
2-26	Sat	# Boston University	ACCNX	W, 7-3
3-1	Tue	Gardner-Webb	ACCNX	W, 6-0
3-4	Fri	* Virginia Tech	ACCN	L, 1-6
3-5	Sat	* Virginia Tech	ACCNX	L, 0-4
3-6	Sun	* Virginia Tech	ACCNX	L, 2-4
3-9	Wed	Mercer	ACCNX	W, 3-0
3-12	Sat	! Illinois	ACCNX	W, 3-1
3-13	Sun	! Illinois	ACCNX	W, 4-0
3-13	Sun	! Liberty	ACCNX	W, 5-4 (8)
3-14	Mon	! Liberty	ACCNX	W, 1-0 (8)
3-15	Tue	Winthrop	ACCNX	W, 8-0 (5)
3-18	Fri	* at Duke	ACCNX	L, 2-6
3-19	Sat	* at Duke	ACCNX	W, 10-2 (5)
3-20	Sun	* at Duke	ACCN	L, 1-7
3-23	Wed	at Georgia	SECN	7 p.m.
3-25	Fri	* Louisville	ACCNX	6 p.m.
3-26	Sat	* Louisville	ACCN	5 p.m.
3-27	Sun	* Louisville	ACCNX	12 p.m.
3-30	Wed	South Carolina	ACCN	7 p.m.
4-1	Fri	* at North Carolina	ACCNX	6 p.m.
4-2	Sat	* at North Carolina	ACCNX	2 p.m.
4-3	Sun	* at North Carolina	ACCNX	1 p.m.
4-6	Wed	Furman	ACCNX	4 p.m.
4-6	Wed	Furman	ACCNX	6 p.m.
4-8	Fri	* at Pittsburgh	ACCN	5 p.m.
4-9	Sat	* at Pittsburgh	ACCNX	1 p.m.
4-10	Sun	* at Pittsburgh	ACCNX	12 p.m.
4-12	Tue	at South Carolina	ESPNU	6 p.m.
4-14	Thu	* Notre Dame	ACCNX	6 p.m.
4-15	Fri	* Notre Dame	ACCNX	6 p.m.
4-16	Sat	* Notre Dame	ACCNX	1 p.m.
4-21	Thu	* at Florida State	ESPN2	9 p.m.
4-22	Fri	* at Florida State	ACCN	6 p.m.
4-23	Sat	* at Florida State	ACCN	2 p.m.
4-27	Wed	ETSU	ACCNX	6 p.m.
4-29	Fri	* Georgia Tech	ACCNX	6 p.m.
4-30	Sat	* Georgia Tech	RSN	1 p.m.
5-1	Sun	* Georgia Tech	ACCNX	12 p.m.
5-11 - 5-14	^	ACC Championship	ACCN	TBA
5-19 - 5-22	&	NCAA Regionals	TBA	TBA
5-26 - 5-29	&	NCAA Super Regionals	TBA	TBA
6-2 - 6-9	&	NCAA Women's College World Series	TBA	TBA

Note: Home games in **bold**; all times are Eastern  
 \* - ACC regular-season game  
 % - FGCU Kickoff Classic (Fort Myers, Fla.)  
 \$ - St. Pete/Clearwater Elite Invitational (Clearwater, Fla.)  
 # - Clemson Classic (Clemson, S.C.)  
 ! - Tiger Invitational (Clemson, S.C.)  
 ^ - ACC Championship (Louisville, Ky.)  
 & - NCAA Tournament (Oklahoma City, Okla.)



## MCKENZIE "PIE" CLARK

- Sophomore McKenzie Clark got off to a slow start in 2022 but hit ACC action ready to prove why she was an ACC Preseason Selection.
- Clark, best known by her nickname "Pie," has been flexible and productive in the lineup floating between the leadoff and second spot.
- Clark is batting a team-high .412 clocking seven hits, three runs scored and three RBIs.
- On the season, Clark is batting .301 off 25 hits with 10 RBIs and 18 runs scored. She has also stolen two bases and hit two home runs - including an inside the park homer vs. Akron.
- Defensively, Clark is one of two consistent starts that has posted a perfect 1.000 fielding percentage covering the center field grass with ease and grace putting her on pace to be in the top running for an inaugural Golden Glove Award.

## FIRST 100

- Clemson softball played its 100th game in program history on March 13 against Illinois at the Tiger Invitational. The Tigers won 4-0 behind Millie Thompson's first collegiate career shutout with a career-high 11 strikeouts.
- The 100th game was played almost five years to the date of the program being announced - program addition was announced on March 14, 2017.
- Through the first 100 games, the softball team paced itself to tie the best start by any program at Clemson. Softball ties women's tennis with 78 wins. Other sports at Clemson can be found below.
- Among current Clemson head coaches through their first 100 games, Coach Rittman solidified himself as the coach with the best record.
- Rittman recorded 78 wins to surpass baseball's Monte Lee and football's Dabo Swinney, who each held a 74-26 record through 100 games.

## FIRST 100 GAMES - BY PROGRAM

Sport (1st Year)	Wins	Loss	Ties	Percentage
Softball (2020)	78	22	-	.780
Women's Tennis (1976)	78	22	-	.780
WBasketball (1975-76)	73	37	-	.730
Women's Soccer (1994)	69	29	2	.700
Volleyball (1977)	68	32	-	.680
Men's Soccer (1934)	63	27	10	.680
Baseball (1896)	60	36	4	.620
Football (1896)	58	34	8	.620
MBasketball (1911-12)	55	44	1	.555
Men's Tennis (1921)	47	48	5	.495

## CAGLE CALLS GAME

- Prior to 2022, Cagle was named a Preseason First Team All-American by D1Softball and Softball America.
- At the St. Pete/Clearwater Elite Invitational, Cagle opened the weekend with a five-inning run rule victory over Texas Tech.
- She followed the TTU game with a nine inning performance in the circle to defeat No. 18/15 Tennessee. She struck out 13 batters en route to earning the victory.
- Cagle threw a complete-game shutout against the No. 6/5 Huskies with 10 strikeouts and hit a solo homer in the sixth inning to upset Washington.
- Last week, Cagle hit two home runs in the midweek game against Winthrop clocking a solo homer in the first inning and her second in the fourth inning to extend the Tiger's lead to 8-0 en route to earning the run-rule victory.
- Last season, Cagle became the first softball player in ACC history to be named both the Player and Freshman of the Year.
- She was named a NFCA Second Team All-American, a NFCA National Freshman of the Year Top-3 finalist

and a USA Softball Collegiate Player of the Year Top 10 Finalist last season.

## TOP 25 VICTORIES

- The Tigers defeated two top 25 programs at the St. Pete/Clearwater Elite Invitational in No. 18/15 Tennessee an No. 6/45 Washington.
- Clemson took Tennessee to nine innings to earn the 4-3 win with six players recording a hit, including Marissa Guimbarda hitting a solo blast out of left field.
- Clemson picked up its first top-10 victory defeating the No. 6/5 Washington Huskies in seven innings on the final day of the 2022 St. Pete/Clearwater Elite Invitational.
- Valerie Cagle earned both wins in the circle. She threw all 9.0 innings with 13 strikeouts against Tennessee and a complete 7.0 inning game against the Huskies, picking up 10 strikeouts and limiting them to only four hits.
- The Washington win was Clemson's first seven-inning win this season and handed the Huskies their first loss.
- The Tigers captured a run-rule victory over a ranked opponent for the first time in program history defeating No. 13/8 Duke in five innings, 10-2.
- Millie Thompson pitched all five innings, striking out eight batters without giving up a walk to earn the victory for the Tigers.

## GUIMBARDA GREATNESS

- Graduate Marissa Guimbarda has been a key contributor to Clemson's offense over the past three seasons.
- Prior to her time in the Orange and Regalia, Guimbarda played two seasons at Furman.
- Most recently, Guimbarda hit her 53rd career home run against Illinois. She is currently ranked fifth among action players in the NCAA for most home runs in her career.
- She hit 24 while at Furman and has 29 at Clemson.
- Guimbarda becomes the 196th player in NCAA Division I history to hit 50 homers during her collegiate career.

## DANGE(RUSS)

- Graduate transfer Sam Russ comes to Clemson to use her final year of eligibility that was awarded due to COVID-19 cutting the 2020 season short.
- Russ decided to use her extra year at Clemson after her father played baseball for the Tigers from 1980-83.
- Russ spent her first four years at NC State where she was a three-time ACC selection and holds the Wolf-pack's record for both career (103) and single season (32) stolen bases.
- She currently ranks first in the NCAA among active D1 players for most career stolen bases (115).
- She hit her first home run in the Orange and Regalia against Liberty at the Tiger Invitational and second against Duke.

## RUSS CAREER MILESTONES

Category	Next Milestone	Needed	Career Total
At-bats	600	18	582
Runs	150	7	143
Hits	200	16	184
RBI	75	14	61
Walks	100	11	89
Stolen Bases	125	10	115

Includes both Clemson and NC State totals

## PITCHER PROWESS

- Despite being young, Clemson's pitching staff proves they are up for any battle.
- The Tigers have four consistent pitchers that have pitched a minimum of 31 innings in 2022 with at least three wins- Valerie Cagle (68.2 - 7), Millie Thompson

# NOTES

(42 - 5), Brooke McCubbin (35.0 - 4) and Regan Spencer (31.1 - 3).

- As a group, they are posting a 1.85 ERA with 169 strikeouts through 178 innings and have limited opponents to a .237 average or lower.
- Cagle has appeared in 15 games with five complete performances, three solo shutouts and two saves.
- Thompson came back even stronger for her second year in the Orange and Regalia clocking 48 strikeouts in 12 appearances.
- Freshman Brooke McCubbin has been a solid relief pitcher for the Tigers with six combined shutouts and picked up her first save against Mercer.
- Spencer has been Clemson's hidden threat appearing in 11 games with one solo shutout, four combined and has struck out 18 batters. She has only allowed 18 hits this season and allowed only three runs, only two earned, to cross home while in the circle.
- Spencer is limiting opponents to a .165 average at the plate and only given up 10 walks.

## YOUNG PROGRAM

- The Clemson softball team has accomplished multiple feats for being a program with just over 100 games.
- Entering this season, the only players with over 100 collegiate games under their belts are transfers that began their careers at other programs. These players include Marissa Guimbarda, Grace Mattimore, Cammy Pereira, Sam Russ and Bailey Taylor.
- Valerie Cagle surpassed the 100-game mark after starting every game in program history for the Tigers.
- The remaining 23 players on the 2022 roster have appeared in less than 100 games led by JoJo Hyatt (95) and Ariele Oda (91).
- The Tigers won the ACC Regular Season Title in their first complete season in 2021 after the 2020 inaugural season was cut short due to COVID-19.
- In only their second season, the Tigers also competed in the ACC Championship game and at the Tuscaloosa Regional.

## SENIOR CLASS AWARD

- Graduates Marissa Guimbarda and Cammy Pereira have been selected as two of the 30 candidates for the 2022 Softball Senior CLASS Award.
- An acronym for Celebrating Loyalty and Achievement for Staying in School, the Senior CLASS Award focuses on the total student-athlete and encourages students to use their platform in athletics to make a positive impact as leaders in their communities.
- Clemson is one of two programs in the country to have multiple athletes selected as candidates, the other being Washington.
- The 30 candidates will be narrowed to 10 finalists later this season, and those names will be placed on the official ballot for nationwide voting.

## HISTORICAL TIMELINE

- March 14, 2022 marked the five-year anniversary since former Clemson Director of Athletics Dan Radakovich announced the addition of the softball program.
- The complete timeline can be found on [ClemsonTigers.com/softball](https://ClemsonTigers.com/softball).

## ACC PRESEASON HONORS

- The Tigers have been picked to finish second in the ACC
- Clemson pitcher Valerie Cagle and outfielder McKenzie Clark were named to the 2022 Preseason All-ACC Team based on vote by the league's head coaches.
- Cagle returns after being named the ACC Player and Freshman of the Year in 2021. She batted .404 with a .821 slugging percentage and 17 home runs. She also

led the Tigers with a 1.16 ERA and 267 strikeouts.

- Clark had a breakout freshman season posting a .355 average and .639 slugging percentage. She stole a team-high 23 bases in 2021 and was an NFCA All-Region Selection.

## CLEMSON+

- Clemson Athletics and IPTAY have launched Clemson+, a streaming service dedicated to showing what it's like to be a Tiger.
- Clemson+ showcases the best video content, and is now available on all major streaming platforms, via the Clemson Tigers app and web browser.
- The subscription will be included as an exclusive benefit to more than 26,000 IPTAY and Collegiate Club members.
- Clemson softball will be apart of the initial launch of Clemson+ with a Clemson Softball All-Access feature.
- Get an inside look at the day-to-day aspects of the Clemson softball program and exclusive interviews with the coaching staff and student-athletes. Additional episodes will be added in the coming weeks.
- Check out select previews with head coach John Rittman as he sits down with Don Munson.

## POWER: WOMEN'S LEADERSHIP ACADEMY

- Director of Athletics Graham Neff and Senior Associate AD/Senior Woman Administrator Stephanie Ellison-Johnson announced the formation of the POWER: Women's Leadership Academy in early February.
- The women's leadership academy is a three-pronged women's leadership program with curriculum developed by Assistant AD for Student-Athlete Development Tori Niemann and Dr. Janna Magette Butler, Clemson Athletic Leadership Graduate Program Lecturer.
- The year-long program focuses on identity, professional presence, self-leadership and community, along with an annual experiential trip.
- The leadership summit is an opportunity for POWER participants to design, organize and execute a transformational leadership experience for their Clemson female student-athlete peers.
- Softball has two current student-athletes in Power's inaugural class: Morgan Johnson and Alia Logoleo.

## LEGACY - BLACK HISTORY MONTH

- February allowed us to shine a spotlight on the many contributions, successes and challenges of African Americans at Clemson.
- The next iteration will feature student-athletes and staff members talking about an inspirational Black person in their lives.
- Clemson softball's own Morgan Johnson's has penned a letter to Jackie Robinson about his influence and the impact he has had on her career in the sports community.
- Johnson will sit down with ESPN later this month to discuss the impact Jackie Robinson had on her life as we near the 75th anniversary since he broke the color barrier in baseball on April 15.
- Her feature is now live on [ClemsonTigers.com](https://ClemsonTigers.com). View it on the main page under "My Story."

## FALL ACADEMIC SUCCESS

- Clemson University student-athletes earned a 3.19 cumulative GPA in the Fall 2021 semester, the seventh consecutive semester greater than 3.0, and the third-highest ever.
- Clemson softball set a program-record 3.48 GPA in the fall of 2021.
- Clemson's department-wide graduation success rate (GSR) also hit a record of 95 percent in the most recent release.

## TIGER TIDBITS

Category	Record
Record	19-6
ACC Record	1-5
Non-Conference Record	18-3
Versus Top 25 (NFCA)	3-9
Versus Top 10 (NFCA)	1-4
Versus Top 5 (NFCA)	--
In February	11-3
In March	8-5
In April	--
In May	--
On Monday	1-0
On Tuesday	2-0
On Wednesday	2-0
On Thursday	2-0
On Friday	4-3
On Saturday	5-3
On Sunday	3-2
In Day Games	12-4
In Night Games	7-4
In 1-Run Games	3-1
In 2-Run Games	3-1
In 5+ Run Games	9-3
After a Loss	4-3
After a Win	14-5
In Extra Innings	3-1
Shutouts	12-3
Scoring First	18-2
Scoring in the 1st Innings	9-1
Leading After 4	15-1
Trailing After 4	1-5
Tied After 4	3-2
Leading After 5	9-1
Trailing After 5	1-6
Tied After 5	3-1
Leading After 6	10-1
Trailing After 6	1-7
Tied After 6	1-0
Scoring 5 or More Runs	12-0
Allowing 5 or More	1-4
Out-hit opponent	16-1
Opponent out-hit	2-6
Hits are equal	1-1
Make 0 errors	7-2
Make 1 error	10-3
Make 2+ error	2-3
Opp. makes 0 errors	4-4
Opp. makes 1 error	6-2
Opp. makes 2+ errors	9-2

## MEDIA SERVICES

### CLEMSON ATHLETIC COMMUNICATIONS

Contact	Valerie Johnson (Central Michigan '18)
Email	<a href="mailto:vjohns4@clemson.edu">vjohns4@clemson.edu</a>
Cell Phone	712-269-4149
Ticket Office Phone	1-800-CLEMSON
Website	<a href="https://ClemsonTigers.com">ClemsonTigers.com</a>
Social Media	ClemsonSoftball

### ACC MEDIA RELATIONS

Justin Wilson is the softball athletic communications contact at the ACC office. He can be reached at 336.369.3713 or at [jwilson@acc.org](mailto:jwilson@acc.org).

### CREDENTIALS

Members of the working press who desire a media credential to a Clemson softball home game [ClemsonTigers.com/softball](https://ClemsonTigers.com/softball) under Media Resources. There is limited space for writers inside McWhorter Stadium. Members of the media must request a pass at least 24 hours prior to each game to be considered for admittance.

### WEBSITE & SOCIAL MEDIA

Up-to-date stats, notes, stories and box scores can be found on [Clemson's official website \(ClemsonTigers.com\)](https://ClemsonTigers.com). Live online video, live audio and live stats can be accessed on the [ClemsonTigers.com](https://ClemsonTigers.com) softball schedule page. Fans can also follow [ClemsonSoftball](https://ClemsonSoftball) on Twitter, Instagram and Facebook.

# NOTES

## SEASON TICKETS SOLD OUT

- The Clemson community continues to show its unwavering support to the Clemson softball team through ticket sales.
- Season tickets were sold out prior to the New Year, and IPTAY members and the general public have done their part by snapping up all single-game tickets.
- Tickets for every game during the regular-season at McWhorter sold out prior to opening day.

## UPCOMING

- The Tigers will return home this weekend to host Louisville in a three-game series beginning on Friday night.
- Clemson will continue its home stretch on Wednesday of next week hosting in-state rival South Carolina on March 30 before traveling to North Carolina to face the Tar Heels in a three-game series to begin April.

## ADDITIONAL MEDIA RESOURCES

- More information and a digital version of this set of game notes can be found by scanning the QR Code.



## CLEMSON VS. RANKED TEAMS

2020						
Date	Opponent	CU NFCA, ESPN	Opp. NFCA, ESPN	W-L	Score	
2-26	Georgia	NR	14, 15	W	4-1	
2021						
Date	Opponent	CU NFCA, ESPN	Opp. NFCA, ESPN	W-L	Score	
2-18	* Virginia Tech	RV, N/A	14, 15	W	8-1	
2-19	* Virginia Tech <sup>(1)</sup>	RV, N/A	14, 15	L (5)	0-9	
2-19	* Virginia Tech <sup>(2)</sup>	RV, N/A	14, 15	L	1-4	
3-26	* Duke <sup>(1)</sup>	20, 21	11, 12	L	0-2	
3-26	* Duke <sup>(2)</sup>	20, 21	11, 12	L	1-3	
3-27	* Duke	20, 21	11, 12	W	4-1	
3-28	* Duke	20, 21	11, 12	W	4-2	
5-14	^ Virginia Tech	13, 10	20, 20	W	2-0	
5-15	^ Duke	13, 10	21, 21	L	0-1	
5-22	! Alabama	13, 10	3, 3	L	0-6	
5-23	! Alabama	13, 10	3, 3	L	0-5	
2022						
Date	Opponent	CU NFCA, ESPN	Opp. NFCA, ESPN	W-L	Score	
2-11	Texas	15, 14	10, 8	L	0-4	
2-18	Tennessee	15, 12	18, 15	W (9)	4-3	
2-19	Northwestern	15, 12	RV, 23	L	0-7	
2-20	Washington	15, 12	6, 5	W	2-0	
3-4	* Virginia Tech	14, 9	6, 6	L	0-6	
3-5	* Virginia Tech	14, 9	6, 6	L	0-4	
3-6	* Virginia Tech	14, 9	6, 6	L	2-4	
3-18	* Duke	17, 15	13, 8	L	2-6	
3-19	* Duke	17, 15	13, 8	W (5)	10-2	
3-20	* Duke	17, 15	13, 8	L	1-7	
<b>Total</b>						<b>8-14</b>
Home						4-7
Away						1-4
Neutral						3-3
Non-Conference						3-4
ACC Only						5-10

**Bold** denotes home game  
 \* - ACC regular-season game; ^ - ACC Championship; ! - Regionals

## LAST TIME..

OFFENSE	
Hit two HRs in a game	Valerie Cagle (Winthrop, 3/15/22)
Hit three HRs in a game	Alia Logoleo (at Syracuse, 5/9/21)
Hit two HRs in an inning	
Hit grand slam	Aby Vieira (Akron, 2/26/22)
Leadoff HR [inning]	McKenzie Clark (at Duke, 3/18/22)
Walkoff HR	
Walkoff HR [run rule]	Alia Logoleo (Boston U, 2/25/22)
Pinch-hit HR	
Inside the Park HR	McKenzie Clark (Akron, 2/26/22)
HR in back-to-back games	Marissa Guimbarada (Charlotte 2/23, BU 2/25/22)
Back-to-back HRs	Valerie Cagle & Marissa Guimbarada (Gardner-Webb, 3/1/22)
Two doubles in a game	Marissa Guimbarada (Liberty, 3/13/22)
Three doubles in a game	N/A
Two triples in a game	N/A
Hit for the cycle	N/A
Four hits in a game	McKenzie Clark (Akron 2/26/22)
Drove in five runs	Valerie Cagle (at Syracuse, 5/8/21)
Drove in six runs	Valerie Cagle (at FGCU, 2/10/22)
Drove in seven runs	N/A
Drove in eight runs	Valerie Cagle (Maryland, 2/15/20)
Drove in 10 runs	Alia Logoleo (at Syracuse, 5/9/21)
Scored four runs	Alia Logoleo (at Syracuse, 5/9/21)
Walkoff hit [non-HR]	JoJo Hyatt (vs Texas Tech, 2/17/22 -- triple)
Walkoff [non-hit]	Alia Logoleo (Liberty, 3/14/22 -- error)
Walkoff [pinch hitter]	Kyah Keller (Liberty, 3/13/22 -- single)
PITCHING	
Threw a no-hitter	Valerie Cagle (7.0 IP, Boston College, 4/18/21)
Threw a combined no-hitter	Regan Spencer & Millie Thompson (5.0 IP, vs. Kent State, 2/11/22)
Threw a perfect game	N/A
Threw a solo shutout	Regan Spencer (St. Francis, 2/25/22)
Had 14 strikeouts	Valerie Cagle (Georgia Tech, 5/13/21)
Had 13 strikeouts	Valerie Cagle (vs Tennessee, 2/18/22)
Had 12 strikeouts	Valerie Cagle (vs Villanova, 2/21/20)
Had 11 strikeouts	Millie Thompson (Illinois, 3/13/22)
Had 10 strikeouts	Valerie Cagle (vs No. 6/5 Washington, 2/20/22)
Pitched >7 innings	Valerie Cagle (8.0 IP, vs. Liberty, 3/13/22)
TEAM	
Won 10 straight games	2021 (19: Mar. 27 - May 8)
Won 15 straight games	2021 (19: Mar. 27 - May 8)
Won 20 straight games	N/A
Extra-Innings victory	3/14/22, No. 17 Clemson 1, Liberty 0 (8 Inn.)
Extra-Innings loss	2/19/22, No. 15 Clemson 1, Wisconsin 2 (8 Inn.)
Played 11 innings	3/19/21, No. 23 Clemson 4, at Louisville 0
Played 10 innings	N/A
Played nine innings	2/18/22, No. 15 Clemson 4, No. 18 Tennessee 3
Played eight innings	3/14/22, Clemson 1, Liberty 0
Was no-hit	N/A
Was shut out	3/6/22, No. 6 Virginia Tech 4, No. 14 Clemson 0
Beat a ranked opponent	3/19/22, No. 17 Clemson 10, No. 13 Duke 2
Beat a top-10 opponent	2/20/22, No. 15 Clemson 2, No. 6 Washington 0
Beat a top-10 ACC opponent	N/A
Run-ruled a ranked opponent	3/19/22, No. 17 Clemson 10, No. 13 Duke 2
Tied an opponent	N/A

## WEEKLY POLLS

2022						
Date	W-L	NFCA	ESPN	D1	SA	
2-7	0-0	15	14	14	14	
2-15	3-1	15	12	13	14	
2-22	6-3	15	9	13	12	
3-1	11-3	14	9	13	11	
3-8	12-6	17	15	17	17	
3-15	17-6	17	15	18	19	
3-22	18-8	16	15	19	21	
2021						
Date	W-L	NFCA	ESPN	D1	SA	
3-29	22-4	18	19	23	20	
4-5	26-4	18	18	20	19	
4-12	26-4	17	18	19	19	
4-17	32-4	16	16	18	16	
4-26	37-4	13	13	15	13	
5-3	37-4	13	11	15	13	
5-10	40-5	13	10	16	13	
5-17	42-6	13	10	17	14	
6-10	44-8	18	17	19	22	

Note: Clemson's all-time rankings can be found in the Clemson softball record book.

## TEAM SUPERLATIVES

OFFENSE	
At bats	34, at Charlotte (Feb. 23)
Runs scored	11, at FGCU (Feb. 10)
Hits	13, at Charlotte (Feb. 23)
RBI	11, at FGCU (Feb. 10)
Doubles	6, at Charlotte (Feb. 23)
Triples	2, vs. Texas Tech (Feb. 17)
Home runs	3, Winthrop (Mar. 15)
Walks	7, 2x, Akron (Feb. 26)
Strikeouts	13, Virginia Tech (Mar. 6)
Sac flies	1, 3x, Virginia Tech (Mar. 6)
Stolen bases	3, 4 times
Hit by pitch	3, vs. Kent State (Feb. 11)
FIELDING	
Putouts	27, vs. Tennessee (Feb. 18)
Assists	14, 2x, Illinois (Mar. 12)
Errors	4, Virginia Tech (Mar. 5)
DPs turned	3, Mercer (Mar. 9)
PITCHING	
Innings pitched	9.0, vs. Tennessee (Feb. 18)
Runs allowed	7, 2x at Duke (Mar. 20)
Earned runs	7, at Duke (Mar. 20)
Walks allowed	6, at Charlotte (Feb. 23)
Strikeouts	13, 2x, Gardner-Webb (Mar. 1)
Hits allowed	11, 2x, Virginia Tech (Mar. 5)

## PLAYER SUPERLATIVES

OFFENSE	
At bats	5, 2x, McKenzie Clark (vs. Tennessee - Feb. 18)
Runs scored	4, McKenzie Clark (at FGCU - Feb. 10)
Hits	4, McKenzie Clark (Akron - Feb. 26)
RBI	6, Valerie Cagle (at FGCU - Feb. 10)
Doubles	2, 3x, Marissa Guimbarada (Liberty - Mar. 13)
Triples	1, 7 times
Home runs	2, Valerie Cagle (Winthrop - Mar. 15)
Walks	3, Valerie Cagle (Akron - Feb. 26)
Strikeouts	3, 3x, Marissa Guimbarada (Virginia Tech - Mar. 6)
Sac flies	1, 3x, Sam Russ (Virginia Tech - Mar. 6)
Stolen bases	2, 4 times
Hit by pitch	2, Bailey Taylor (vs. Kent State - Feb. 11)
FIELDING	
Putouts	13, JoJo Hyatt (vs. Tennessee - Feb. 18)
Assists	6, 2x, Alia Logoleo (Liberty - Mar. 13)
Errors	2, 2x, Sam Russ (Virginia Tech - Mar. 6)
PITCHING	
Innings pitched	9.0, Valerie Cagle (vs. Tennessee - Feb. 18)
Runs allowed	7, Brooke McCubbin (vs. Northwestern - Feb. 19)
Earned runs	6, 2x, Valerie Cagle (at Duke - Mar. 18)
Walks allowed	3, 5 times
Strikeouts	13, Valerie Cagle (vs. Tennessee - Feb. 18)
Hits allowed	9, 2x, Valerie Cagle (Virginia Tech - Mar. 4)

# ROSTER

## NUMERICAL

#	Player	Pos.	B/T	Yr.	Ht.	Hometown	Previous School / High School
1	Rachel Gibson	RHP	R-R	Fr.	5-9	Ringgold, Ga.	Heritage HS
2	Brooke McCubbin	RHP/INF	R-R	Fr.	5-10	Locust Grove, Ga.	Locust Grove HS
3	Sam Russ	OF	L-R	+Gr.	5-8	Charlotte, N.C.	NC State / Providence Day HS
4	Aby Vieira	C/UTL	L-R	Fr.	5-9	Mission Viejo, Calif.	Mission Viejo HS
5	Ansley Houston	INF	R-R	So.	5-6	Grantville, Ga.	Newnan HS
6	Carlee Shannon	OF	R-R	**So.	5-7	Chester, S.C.	York Comprehensive HS
7	McKenzie Clark	OF	R-R	So.	5-5	Myakka City, Fla.	Lakewood Ranch HS
8	Grace Hiller	INF/OF	R-R	Fr.	5-9	Macon, Ga.	Tattal Square Academy
9	Sarah Howell	C/UTL	R-R	So.	5-4	Oxford, Ala.	Oxford HS
10	Emma Whitfield	RHP	L-R	*So.	5-9	Toccoa, Ga.	Stephens County HS
11	Haylee Whitesides	RHP/INF	R-R	Fr.	5-5	Duncan, S.C.	Byrnes HS
12	Cammy Pereira	INF/OF	L-R	**Gr.	5-6	Winston-Salem, N.C.	Furman University / West Forsyth HS
13	Abi Stuart	C/UTL	R-R	*So.	5-9	Snow Camp, N.C.	Southern Alamance HS
15	Madison May	OF/INF	R-R	*So.	5-9	Tocosta, Ga.	Lowndes HS
16	Alia Logoleo	INF/OF	R-R	*So.	5-8	Nashville, Tenn.	Hillsboro HS
17	Regan Spencer	RHP	R-R	So.	5-11	Lexington, N.C.	North Davidson HS
18	Bailey Taylor	INF	R-R	*Gr.	5-7	Winnsboro, S.C.	Troy University / Richard Winn Academy
19	Jaden Cheek	INF/OF	R-R	So.	5-9	Carnesville, Ga.	Franklin County HS
21	Jadeyn Ruszkowski	INF	L-L	Fr.	5-8	Lithia, Fla.	Newsome HS
23	JoJo Hyatt	C	R-R	**So.	5-8	Buford, Ga.	Buford HS
24	Arielle Oda	OF/INF	L-R	**So.	5-4	Buford, Ga.	Buford HS
25	Marissa Guimbarda	UTL	R-R	*Gr.	5-6	Suwanee, Ga.	Furman University / Lambert HS
27	Grace Mattimore	C/UTL	R-R	*Gr.	5-7	Ashburn, Va.	Army West Point / Broad Run HS
28	Maddie Moore	INF	R-R	Fr.	5-7	Loomis, Calif.	Del Oro HS
42	Morgan Johnson	OF	R-R	*So.	6-1	Evans, Ga.	Evans HS
58	Kyah Keller	INF	R-R	*So.	6-0	Hollywood, Ala.	Battle Ground Academy
72	Valerie Cagle	P/UTL	L-R	*So.	5-9	Yorktown, Va.	Homeschooled
77	Hannah Goodwin	INF	R-R	**Fr.	5-8	West Columbia, S.C.	White Knoll HS
87	Millie Thompson	LHP/INF	L-L	So.	5-7	Bedford, Va.	Liberty HS

### Head Coach:

John Rittman (3rd season • New Mexico State '86)

### Associate Head Coach:

Kyle Jamieson (3rd season • Brock University '97, Nipissing University '98)

### Assistant Coach:

Courtney Breault (3rd season • Nebraska '13, Clemson '21)

### Volunteer Assistant Coach:

Reese Jacobs (3rd season • Georgia Southern '79, Tennessee '81)

### Graduate Assistant Coach:

Alyssa Bilodeau (1st season • Jacksonville '21)

### Director of Operations:

Jeannie Murphy (3rd season • Oklahoma '10, Concordia University Irvine '14)

### Student Manager:

Amanda Fitzwilliam (2nd season • Clemson '24)

### Student Manager:

Anna Johnson (1st season • Clemson '23)

### Student Manager:

Olivia Turpin (1st season • Clemson '24)

### Associate AD/Sport Supervisor:

Natalie Honnen (3rd season • University of Florida '03 & '05)

### Athletic Trainer:

Katie Rovtar (3rd season • University of Toledo '06, Virginia Tech '08)

### Strength & Conditioning Coach:

Ryan Metzger (3rd season • University of Wisconsin-Oshkosh '11, University of Kentucky '15)

### Athletic Communications Contact:

Valerie Johnson (1st season • Central Michigan '18)

### Academic Advisor:

Kayla Velasquez (1st season • Bowling Green '17, Northwestern State '19)

### Assistant Director of Equipment:

Ben Miller (3rd season • Clemson '16 & '18)

### Supervisor of Athletic Grounds:

Mike Echols (3rd season • Clemson '85)

## ALPHABETICAL

#	Player	Pos.	Cl.
72	Valerie Cagle	RHP/UTL	*So.
19	Jaden Cheek	INF/UTL	So.
7	McKenzie Clark	OF	So.
1	Rachel Gibson	RHP	Fr.
77	Hannah Goodwin	INF	*So.
25	Marissa Guimbarda	OF/UTL	*Sr.
8	Grace Hiller	INF/OF	Fr.
5	Ansley Houston	INF	So.
9	Sarah Howell	C/UTL	So.
23	JoJo Hyatt	C	**So.
42	Morgan Johnson	OF	*So.
58	Kyah Keller	INF	*So.
16	Alia Logoleo	OF	*So.
27	Grace Mattimore	C/UTL	*So.
15	Madison May	INF/OF	*So.
2	Brooke McCubbin	RHP/INF	Fr.
28	Maddie Moore	INF	Fr.
24	Arielle Oda	INF/OF	**So.
12	Cammy Pereira	INF/OF	**Sr.
3	Sam Russ	OF	+Gr.
29	Jaden Ruszkowski	INF	Fr.
6	Carlee Shannon	OF	**So.
17	Regan Spencer	RHP	So.
13	Abi Stuart	C/UTL	So.
18	Bailey Taylor	INF	*So.
87	Millie Thompson	LHP/INF	So.
4	Aby Vieira	C/UTL	Fr.
11	Haylee Whitesides	RHP/INF	Fr.
10	Emma Whitfield	RHP	*So.

## PRONUNCIATIONS

#	Name	Pronunciation
4	Aby Vieira	vee-AIR-uh
12	Cammy Pereira	puh-RAIR-uh
16	Alia Logoleo	lo-guh-LAY-oh
21	Jadeyn Ruszkowski	russ-COW-ski
24	Arielle Oda	OH-duh
25	Marissa Guimbarda	GUHM-bar-duh
87	Millie Thompson	MILL-ee
	Kyle Jamieson	pronounced like, "Jamison"
	Courtney Breault	BREE-ahit
	Katie Rovtar	ROHV-tahr

\* - one redshirt; + - transfer using extra year of eligibility granted due to Covid-19; Note: "Gr." denotes senior unless otherwise noted.

## PRESEASON HONORS

### #1 RACHEL GIBSON • RHP • FR.

- One of Top 75 Impact Freshmen by D1Softball.com

### #2 BROOKE MCCUBBIN • RHP/INF • FR.

- Softball America ACC Top Newcomer to Watch

### #7 MCKENZIE CLARK • OF • SO.

- Preseason All-ACC selection

### #25 MARISSA GUIMBARDA • UTL • \*GR.

- No. 91 on Extra Innings Softball's Extra Elite 100 List
- No. 82 on Softball America's 2022 Preseason College Top 100 list

### #72 VALERIE CAGLE • RHP/UT • \*SO.

- Preseason All-ACC selection
- USA Softball Collegiate Player of the Year Top 50 Watch List
- No. 6 on Extra Innings Softball's Extra Elite 100 list
- No. 19 on Softball America's 2022 Preseason College Top 100 list
- Preseason D1Softball.com ACC Player of the Year
- Preseason D1Softball.com First Team All-American
- Preseason Softball America First Team All-American
- D1Softball.com Preseason Top 10 Pitcher Power Rankings

## CAREER MILESTONES

Upcoming Milestone	Has	Needs
Marissa Guimbarda 60 home runs	*53	7
Marissa Guimbarda 175 RBIs	*158	17
Cammy Pereira 100 runs	*86	14
Cammy Pereira 25 stolen bases	*22	3
Sam Russ 150 runs	*143	7
Sam Russ 125 stolen bases	*115	10
Valerie Cagle 150 hits	123	27
Valerie Cagle 50 home runs	34	16
McKenzie Clark 75 runs	65	10
McKenzie Clark 50 stolen bases	27	23
Alia Logoleo 75 hits	64	11
Alia Logoleo 50 runs	40	10
JoJo Hyatt 75 hits	50	25
JoJo Hyatt 50 RBIs	27	23
Valerie Cagle 400 Innings Pitched	375	25
Valerie Cagle 450 strikeouts	435	15
Valerie Cagle 50 wins	44	6
Millie Thompson 150 strikeouts	118	32
Regan Spencer 50 strikeouts	38	12

\*Clemson and Previous School Combined

# HEAD COACH JOHN RITTMAN



**John Rittman**, a longtime head coach and member of the USA Softball Women's National Team coaching pool, was named the first Head Coach of Clemson Softball on Nov. 3, 2017. Rittman came to Clemson after serving as the Associate Head Coach at the University of Kansas from 2015-17. Rittman joined the Jayhawks after 18 seasons as the Head Coach at Stanford University and 10 years on the United States National Team coaching staff (2001-08, 2016-18).

During the second season and first complete year, Rittman propelled Clemson to even higher heights by becoming the ACC Regular Season Champions after posting a 29-5 ACC record and winning seven ACC series, including six series sweeps. The Tigers were ACC Tournament Runner-Ups after shutting out both Georgia Tech and then-No. 20 Virginia Tech in the first two rounds before dropping the championship game, 1-0, to then-No. 21 Duke. Rittman was named ACC Coach of the Year and guided Valerie Cagle to being the first student-athlete in league history to be named both the ACC Freshman and Player of the Year in the same season. Clemson finished with six individuals earning nine All-ACC team selections following the regular season, including three on the first team. Cagle and freshman McKenzie Clark were named to the NFCA All-Region team. The honors continued to roll in for Cagle as she became the first Clemson softball All-American garnering second team honors from the NFCA, was a JWOS First Team All-American, a Top-Three Finalist for the NFCA's National Freshman of the Year and a Top-10 Finalist for USA Softball's Collegiate Player of the Year. Behind Rittman's efforts, Clemson climbed as high as No. 13 in the NFCA national rankings and No. 10 in the ESPN/USA Softball rankings before finishing the season at No. 18 in the NFCA poll. Rittman led the Tigers to their first postseason appearance traveling to the Tuscaloosa Regional to defeat Troy twice, including a five-inning run-rule victory in the opening game that capped off a historic second season.

In its inaugural season, Rittman transcended Clemson into a nationally-respected program. Rittman guided Clemson, which was predicted to finish in 10th in the conference, according to the 2020 ACC preseason poll, to a 19-8 overall record, including 5-1 in ACC play. The Tigers, who won both of their ACC series against Virginia and Pitt, won 11 of their final 12 games before the 2020 season was cut short due to the coronavirus pandemic (COVID-19). Additionally, Clemson went 14-2 at Clemson Softball Stadium (now McWhorter Stadium), which included a 13-game home win streak that spanned 25 days. Rittman and the Tigers generated plenty of enthusiasm among the Clemson faithful as the first-year program ranked fourth nationally in attendance (24,860) and fifth in average attendance (1,544/game) in 2020. On March 3, the National Fastpitch Coaches Association (NFCA) announced the first-year program received votes (10) in the fifth edition of the 2020 USA Today/NFCA D1 Top 25 Coaches Poll. The announcement came after Clemson defeated then-No. 14 Georgia, 4-1, on Feb. 26 at Clemson Softball Stadium before sweeping the Cavaliers to win its first-ever ACC series. Under the direction of Rittman, three Tigers in Valerie Cagle (twice), Marissa Guimbarda and Logan Caymol earned

ACC weekly honors on four occasions, the most by any ACC program in 2020. Cagle, a true freshman in 2020, was second in the nation in RBIs (36), while Guimbarda finished the season fourth nationally in home runs (11). Both Cagle and Guimbarda led the ACC in RBIs and home runs, respectively.

At Stanford, Rittman and the Cardinals recorded 18-consecutive winning seasons, made 16-straight NCAA appearances, notched 13 40-win seasons and produced at least one All-American in 15 of his last 17 seasons. As head coach, Rittman accumulated a 750-351-3 overall mark, coached a national player of the year, 16 All-Americans, earned five Super Regional appearances, two Women's College World Series appearances and maintained a spot in every regular-season NFCA top-25 poll for more than a decade.

Rittman served on the staff of the USA Softball team which won gold at both the 2016 Women's Softball World Championship and the 2017 Pan Am Qualifier. He also worked with Team USA from 2001-08, coaching the 2004 Olympic gold medal winners in Athens and the 2008 silver medalists in Beijing. Team USA also won gold medals at the 2002 and 2006 World Championship and the 2003 and 2007 Pan Am Games.

Prior to being named head coach at Stanford, Rittman spent four seasons as an assistant coach at the University of Washington, focusing on hitting and defense. Rittman helped start the program and, within just four seasons, the Huskies had earned a No. 1 national ranking, won the 1996 Pac-10 Championship, made three NCAA Tournament appearances and notched a runner-up finish in their first trip to the Women's College World Series. Washington became the first team since Texas A&M (1983) to advance to the championship game in its first appearance at the WCWS.

Before his appointment at Washington, Rittman spent two seasons as an assistant at the University of Minnesota. During his second year, the Golden Gophers won the Big Ten Conference with a 20-4 league record. The Gophers set team and individual records in almost every offensive category. The Minnesota squad led the nation in hits and total bases en route to a No. 15 national ranking. Rittman also helped produce two Golden Gopher All-Americans.

From 1988-90, Rittman was an assistant coach at the University of Oregon. During his stay, the Ducks played in the 1989 Women's College World Series, set several team and individual offensive records and produced an All-American.

Rittman graduated from New Mexico State with a degree in journalism in 1986. He was a three-year letterwinner in baseball as an outfielder at NMSU after transferring from Yavapai Junior College in Prescott, Arizona.

Rittman and his wife, Lorie, a former softball player at the University of Oklahoma, are the parents of Justin, a UCLA graduate and former fullback for the Bruins, and Jake, a senior punter at Notre Dame.

## HEAD COACH JOHN RITTMAN

**Education:** Bachelor's degree in journalism at New Mexico State (1986).

**Playing Experience:** Three-year letterman at New Mexico State (1984-86).

**Coaching Experience:** Assistant Coach at Oregon (1988-90) ... Assistant Coach at Minnesota (1991-92) ... Assistant Coach at Washington (1993-96) ... Head Coach at Stanford (1997-2014) ... Associate Head Coach at Kansas (2015, 2017) ... Head Coach at Clemson (2020-present).

**Family:** Wife, Lorie Rittman ... sons, Justin and Jake.



### RITTMAN'S HEAD COACHING RECORD

Year	School	W-L	NCAA
1997	Stanford	31-27-1	
1998	Stanford	41-18	Regionals
1999	Stanford	40-25	Regionals
2000	Stanford	45-18	Regionals
2001	Stanford	54-16-1	World Series
2002	Stanford	44-20	Regionals
2003	Stanford	41-26	Regionals
2004	Stanford	49-19	World Series
2005*	Stanford	43-16	Super Regionals
2006	Stanford	42-18	Super Regionals
2007	Stanford	35-21-1	Regionals
2008	Stanford	49-15	Super Regionals
2009	Stanford	48-11	Super Regionals
2010	Stanford	37-19	Regionals
2011	Stanford	42-17	Super Regionals
2012	Stanford	40-19	Regionals
2013	Stanford	39-21	Regionals
2014	Stanford	30-25	
2020^	Clemson	19-8	N/A
2021*	Clemson	44-8	Regionals
2022	Clemson	19-8	

\* - conference champion; ^ - season suspended March 12 and later canceled due to a coronavirus (COVID-19) pandemic

### RITTMAN'S HEAD COACHING RECORD

School	Seasons	Years	W-L	Win %
Stanford	18	1997-2014	750-351-3	.681
Clemson	3	2020-22	82-24	.795
<b>Totals</b>	<b>21</b>	<b>1997-2014, 2020-22</b>	<b>832-375-3</b>	<b>.689</b>

### RITTMAN VS. ACC AS CLEMSON HEAD COACH

Team	Overall	Home	Away	Neutral
Boston College	4-0	4-0	0-0	0-0
Duke	3-6	2-2	1-2	0-2
Florida State	0-0	0-0	0-0	0-0
Georgia Tech	4-0	0-0	3-0	1-0
Louisville	4-0	0-0	4-0	0-0
North Carolina	4-0	4-0	0-0	0-0
NC State	4-0	4-0	0-0	0-0
Notre Dame	0-0	0-0	0-0	0-0
Pittsburgh	2-1	2-1	0-0	0-0
Syracuse	3-1	0-0	3-1	0-0
Virginia	7-0	3-0	4-0	0-0
Virginia Tech	2-5	1-5	0-0	1-0
<b>Totals</b>	<b>38-13</b>	<b>20-8</b>	<b>15-3</b>	<b>2-2</b>

**Note:** Clemson's neutral-site games against Duke (Feb. 7, 2020) was not considered an ACC contest towards the league's standings.

# 2022 BROADCAST SHEET

1



## RACHEL GIBSON

Fr. • RHP • 5-9 • Ringgold, Ga. • Heritage HS

	ERA	W-L	APP	CG	SHO	IP	SO
2022	99.00	0-0	1	0	0/0	0.0	0
Career	99.00	0-0	1	0	0/0	0.0	0

Season Highs: NP (22)

- Made first collegiate appearance against Akron
- D1 Softball Preseason Top 75 Impact Freshmen selection
- **Prior to Clemson:**
- Two time GHSA 4A State Champion (2018, 2019)
- Two time GHSA 4A Pitcher of the Year (2018, 2019)
- Two time Best of Preps Softball Player of the Year (2018, 2019)
- 2019 Georgia Dugout Club 4A Player of the Year

2



## BROOKE McCUBBIN

Fr. • RHP/INF • 5-10 • Locust Grove, Ga. • Locust Grove HS

	ERA	W-L	APP	CG	SHO	IP	SO
2022	1.80	4-2	14	0	0/6	35.0	21
Career	1.80	4-2	14	0	0/6	35.0	21

Season Highs: IP (5.1), SO (5), NP (110)

- Pitched season-high 5.1 innings vs. Northwestern
- Season-high five strikeouts vs. Winthrop
- Earned first collegiate save vs. Mercer
- **Prior to Clemson:**
- 2020 Georgia Softball Player of the Year
- 2019 GACA State Pitcher of the Year
- 2019 GADC State 5A Player of the Year

3



## SAM RUSS

+Gr. • OF • 5-8 • Charlotte, N.C. • NC State (Providence Day HS)

	AVG	AB	RUNS	HITS	RBI	BB	SB
2022	.296	81	16	24	7	9	12
Career	.316	582	143	184	61	89	115

Season Highs: R (2, 2x), RBI (2, 2x), 3B (1, 4x), SB (2, 4x)

- Finished with three hits and two RBIs against LIU
- Had a sac fly and one hit vs. Virginia Tech on March 6
- Has 115 stolen bases to lead the active NCAA D1 players in career stolen bases
- **Prior to Clemson:**
- Spent four seasons at NC State
- Holds NC State's all-time record for career stolen bases (103) and single season record for stolen bases (32)

4



## ABY VIEIRA (VEE-AIR-UH)

Fr. • C/UTL • 5-9 • Mission Viejo, Calif. • Mission Viejo HS

	AVG	AB	RUNS	HITS	RBI	BB	SB
2022	.333	21	3	7	5	2	0
Career	.333	21	3	7	5	2	0

Season Highs: H (2, 2x), RBI (4), BB (1, 2x), R (1, 3x)

- Out due to leg injury sustained during the Virginia Tech series
- Caught Spencer's and Thompson's combined no-hitter vs. Kent State
- Starting catcher in Clemson's upset over Washington
- Hit first collegiate double against Charlotte
- Recorded first collegiate grand slam (and homer) against Akron
- Also drew a walk against Akron.
- Appeared in a total of nine games this season

5



## ANSLEY HOUSTON

So. • INF • 5-6 • Grantville, Ga. • Newnan HS

	AVG	AB	RUNS	HITS	RBI	BB	SB
2022	.000	0	7	0	0	0	1
Career	.000	1	7	0	0	0	1

Season Highs: R (1, 7x), SB (1)

- Has appeared as a pinch runner in 15 games this season
- First collegiate stolen base against Virginia Tech (March 5)
- Scored her first collegiate run against Boston University on Feb. 25
- ACC Academic Honor Roll (2021)
- **Prior to Clemson:**
- Set Newnan's home run (12) and RBI (42) single season records in 2019
- Three time All-Region First Team (2016-18)

6



## CARLEE SHANNON

\*\*So. • OF • 5-7 • Chester, S.C. • York Comprehensive HS

	AVG	AB	RUNS	HITS	RBI	BB	SB
2022	.000	0	7	0	0	0	10
Career	.000	0	30	0	0	1	37

Season Highs: R (1, 7x), SB (1, 10x)

- Appeared in 20 games in 2022 as a pinch runner
- Holds the Clemson record for most consecutive stolen bases without being caught (19) - ended in Clearwater, Fla.
- Led the team in stolen-base percentage in 2021 (18-for-18)
- Her 18 stolen bases in 2021 were good for second on the team and tied for 10th in the ACC
- Started playing softball in high school after a career-ending gymnastics injury

7



## McKENZIE CLARK

So. • OF • 5-5 • Myakka City, Fla. • Lakewood Ranch HS

	AVG	AB	RUNS	HITS	RBI	BB	SB
2022	.301	83	18	25	10	8	4
Career	.337	252	65	85	39	27	27

Season Highs: R (4), H (4), RBI (2, 3x) 2B (2), SB (1, 4x)

- Scored four runs off two hits with two RBIs at FGCU
- Recorded Clemson's first inside the park home run against Akron
- Went 4-for-4 against Akron with one stolen base as well
- Tallied four hits, two RBIs and three runs in Duke series
- 2022 Preseason All-ACC selection
- NFCA All-Region Southeast selection
- Led the team with 23 stolen bases in 2021 and was sixth in the ACC

8



## GRACE HILLER

Fr. • INF/OF • 5-9 • Macon, Ga. • Tattal Square Academy

	AVG	AB	RUNS	HITS	RBI	BB	SB
2022	-	-	-	-	-	-	-
Career	-	-	-	-	-	-	-

Season Highs:

- **Prior to Clemson:**
- First Team All-7A Region
- Led her HS in batting average, doubles and runs scored
- Set HS single season batting average record (.515) in 2020
- Selected for the Georgia Dugout Club Senior All-State Game

# 2022 BROADCAST SHEET

9



## SARAH HOWELL

*So.* • C/UTL • 5-4 • Oxford, Ala. • Oxford HS

	AVG	AB	RUNS	HITS	RBI	BB	SB
2022	-	-	-	-	-	-	-
Career	.083	12	5	1	0	0	4

**Season Highs:**

- Out during 2022 season due to injury
- Appeared in 23 games in 2021
- Scored the Tigers' game-winning run in the Tigers' 5-4 win at Georgia Tech

10



## EMMA WHITFIELD

*\*So.* • RHP • 5-9 • Toccoa, Ga. • Stephens County HS

	ERA	W-L	APP	CG	SHO	IP	SO
2022	7.00	0-0	1	0	0	1.0	1
Career	3.54	4-0	16	1	0	29.2	26

**Season Highs:** IP (1.0), NP (20)

- Made first appearance of 2022 against Akron
- Appeared in four games in 2021
- Registered a 3.94 ERA in 5.1 innings pitched
- Two time ACC Academic Honor Roll
- Earned the program's first-ever conference win in the circle against Virginia (Feb. 28, 2020)

11



## HAYLEE WHITESIDES

*Fr.* • RHP/INF • 5-5 • Duncan, S.C. • Byrnes HS

	ERA	W-L	APP	CG	SHO	IP	SO
2022	-	-	-	-	-	-	-
Career	-	-	-	-	-	-	-

**Season Highs:**

- Prior to Clemson:
- Two time South Carolina 5A State Champion (2017, 2021)
- Two time member of the Spartanburg Herald Journal All-Area Team (2018, 2019)

12



## CAMMY PEREIRA (puh-RAYR-UH)

*\*\*Gr.* • INF/OF • 5-6 • Winston-Salem, N.C. • Furman (West Forsyth HS)

	AVG	AB	RUNS	HITS	RBI	BB	SB
2022	.329	76	13	25	10	5	0
Career	.309	313	86	159	58	20	22

**Season Highs:** R (2, 2x), H (3, 4x), HR (1), 2B (1, 4x), RBI (3)

- Hit Clemson first home run of the 2022 season at FGCU
- Tallied three RBIs off two hits vs. Kent State
- Had three hits against Charlotte, Boston U and Liberty
- Hit two homers against Georgia Tech (May 13, 2021) in the quarterfinals of the ACC Championship in the Tigers' first postseason win in program history
- Leads the Tigers with a .329 batting average and has four games with three hits

13



## ABI STUART

*\*So.* • C/UTL • 5-9 • Snow Camp, N.C. • Southern Alamance HS

	AVG	AB	RUNS	HITS	RBI	BB	SB
2022	.000	4	1	0	0	2	0
Career	.243	107	15	26	19	9	0

**Season Highs:** R (1), BB (1, 2x)

- Has appeared in five games in 2022 (DP in 2, PR in 1, PH 2)
- Scored one run against Kent State and drew a walk at FGCU
- Played in 36 games, starting in 31 in 2021
- Hit .259 in 85 at bats with 10 runs and a .447 slugging percentage
- Posted an eight-game hitting streak, the third longest streak by any Tiger on the season
- Two time ACC Academic Honor Roll recipient

15



## MADISON MAY

*\*So.* • INF/OF • 5-9 • Valdosta, Ga. • Lowndes HS

	AVG	AB	RUNS	HITS	RBI	BB	SB
2022	.227	22	2	5	4	7	0
Career	.161	31	2	5	4	8	0

**Season Highs:** AB (4), H (2), R (1, 2x), RBI (2), BB (2, 2x)

- Hit a RBI double against Charlotte
- Went 1-for-1 with a double, two RBIs, two walks and one run scored against Texas Tech
- Finished with two hits against Wisconsin
- Recorded first career hit and run against LIU
- Two time ACC Academic Honor Roll recipient
- Reached base on four-straight balls in only plate appearance of the 2021 season

16



## ALIA LOGOLEO (lo-GUH-LAY-oh)

*\*So.* • INF/OF • 5-8 • Nashville, Tenn. • Hillsboro HS

	AVG	AB	RUNS	HITS	RBI	BB	SB
2022	.247	73	11	18	15	4	1
Career	.278	230	40	64	52	19	15

**Season Highs:** R (2, 2x), H (3), 2B (2), HR (1, 3x), RBI (4)

- Started at either SS or 3B every game this season
- Recorded a double and home run against Kent State with four RBIs
- Hit two doubles against Charlotte
- Hit a walk-off home run against Boston University
- Second Team All-ACC selection and ACC All-Freshman Team selection in 2021
- Hit two grand slams in 2021 (only player to record a grand slam last year)
- Hit a grand slam, a three-run homer, a two-run homer and a double at Syracuse

17



## REGAN SPENCER

*So.* • RHP • 5-11 • Lexington, N.C. • North Davidson HS

	ERA	W-L	APP	CG	SHO	IP	SO
2022	0.45	3-0	11	1	1/4	31.1	18
Career	1.04	9-0	25	3	2/5	74	38

**Season Highs:** IP (7.0), SO (4), NP (84)

- Has three victories in the circle this season
- Allowed first runs of 2022 against Liberty
- Threw Clemson's first combined no-hitter with Millie Thompson vs. Kent State
- Leads the ACC with a 0.45 ERA
- Pitched 3.0 innings with four strikeouts against Kent State to earn the win
- Struck out three batters in 1.2 innings of work against Northwestern
- Earned the victory against Gardner-Webb after pitching 2.0 innings efficiently

# 2022 BROADCAST SHEET

18



## BAILEY TAYLOR

\*Gr. • INF • 5-7 • Winnsboro, S.C. • Troy (Richard Winn Academy)

	AVG	AB	RUNS	HITS	RBI	BB	SB
2022	.294	17	0	5	2	0	0
Career	.283	226	26	64	65	21	1

Season Highs: H (2), HPB (2), RBI (1, 2x)

- Has started in eight games this season and appeared in 15
- Had two hits vs. Liberty on March 13
- Tallied an RBI vs. Illinois and Liberty at the Tiger Invitational
- Missed 2021 season due to injury
- Recorded a grand slam against Maryland helping Clemson become just the seventh program in NCAA Division I history to record two grand slams in a single inning

19



## JADEN CHEEK

So. • INF/UTL • 5-9 • Carnesville, Ga. • Franklin County HS

	AVG	AB	RUNS	HITS	RBI	BB	SB
2022	-	-	-	-	-	-	-
Career	.100	10	11	1	0	0	2

Season Highs:

- Has appeared in two games in 2022 as a pinch runner
- Appeared in 39 games in 2021
- Made first career start as the Tigers' designated player against Furman
- Recorded first career hit on a single to right field against Furman

21



## JADEYN RUSZKOWSKI (RUSS-COW-SKI)

Fr. • INF • 5-8 • Lithia, Fla. • Newsome HS

	AVG	AB	RUNS	HITS	RBI	BB	SB
2022	-	-	-	-	-	-	-
Career	-	-	-	-	-	-	-

Season Highs:

- Prior to Clemson:
- Two time District Champion
- Member of the 9A First Team All-State as a designated player
- Had a batting average of .652 as a junior in HS

23



## JOJO HYATT

\*\*So. • C • 5-8 • Buford, Ga. • Buford HS

	AVG	AB	RUNS	HITS	RBI	BB	SB
2022	.239	46	1	11	6	5	0
Career	.248	202	16	50	27	18	0

Season Highs: H (2, 2x), 3B (1), RBI (3), BB (1, 5x) PO (13)

- Has appeared in 21 games this season
- Hit the walk-off triple to run-rule Texas Tech to open the SPCEI with three RBIs
- Brought in two runners in Clemson's 4-3 win over Tennessee
- Started 50 games at catcher in 2021
- Hit .223 with four runs, a .266 slugging percentage and .291 on-base percentage
- Hit first career home run at Virginia (Mar. 7, 2021)
- Two time ACC Academic Honor Roll recipient

24



## ARIELLE ODA (OH-DUH)

\*\*So. • INF/OF • 5-4 • Buford, Ga. • Buford HS

	AVG	AB	RUNS	HITS	RBI	BB	SB
2022	.308	13	5	4	0	0	1
Career	.212	33	27	7	4	7	6

Season Highs: R (1, 5x), AB (3), H (1, 4x), SB (1)

- Made a catch at the wall in right field and hit a single vs. Virginia Tech (3/6)
- Has appeared in 23 games this season
- Appeared in 46 games, including 14 starts in 2021
- Hit .143 with 10 runs scored last season
- Two time ACC Academic Honor Roll member
- Scored one of four runs in the sixth inning in the Tigers' 5-3 comeback win at Virginia (Mar. 6, 2021)

25



## MARISSA GUIMBARDA (GUHM-BAR-DUH)

\*Gr. • OF/UTL • 5-6 • Suwanee, Ga. • Furman (Lambert HS)

	AVG	AB	RUNS	HITS	RBI	BB	SB
2022	.267	75	10	20	21	12	1
Career	.304	517	78	157	158	76	3

Season Highs: R (2, 2x), H (2, 5x), RBI (3, 5x), BB (2, 3x)

- Recorded the hit that scored the first run in Clemson's win over Washington
- Recorded her 53rd career home run to become the 196th player in D1 history to accomplish surpassing 50 HR in her career
- Sits fifth on the NCAA career home run list for active players
- Is a Weaver-James-Corrigan postgraduate scholarship award recipient (2021)
- No. 91 preseason player by Extra Innings Softball and No. 86 by Softball America
- Senior CLASS Award top-30 selection

27



## GRACE MATTIMORE

\*Gr. • C/UTL • 5-7 • Ashburn, Va. • Army West Point (Broad Run HS)

	AVG	AB	RUNS	HITS	RBI	BB	SB
2022	.200	5	1	1	0	1	0
Career	.275	258	41	71	44	57	1

Season Highs: AB (2), 2B (1), R (1), BB (1)

- Recorded a double and scored vs. Virginia Tech on March 6
- Had sac bunt to spur Clemson's eight-run inning at Duke on March 19
- Drew a walk as a pinch hitter vs. Mercer
- Played left field and had two at bats vs. Gardner-Webb
- Started in 40 games in 2021
- Is a Weaver-James-Corrigan postgraduate scholarship award recipient
- Hit .333 in 66 at bats in 2020 and led the ACC with 10 doubles

28



## MADDIE MOORE

Fr. • INF • 5-7 • Loomis, Calif. • Del Oro HS

	AVG	AB	RUNS	HITS	RBI	BB	SB
2022	.163	43	9	7	3	4	2
Career	.163	43	9	7	3	4	2

Season Highs: R (1, 9x), H (1, 7x), BB (1, 4x), SB (1, 2x), HR (1)

- Has started in 26 games this season
- Recorded a hit and a run at FGCU on opening day
- Hit a run RBI double vs. Mercer
- Scored the winning run for Clemson vs. Tennessee and the first run for Clemson against Washington
- Hit first career home run against Boston University on 2/26
- Hit first collegiate double at Charlotte

# 2022 BROADCAST SHEET

42



## MORGAN JOHNSON

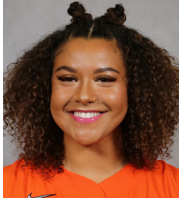
\*So. • OF • 6-1 • Evans, Ga. • Evans HS

	AVG	AB	RUNS	HITS	RBI	BB	SB
2022	-	-	-	-	-	-	-
Career	.288	52	9	15	18	8	4

Season Highs:

- Out during 2022 season due to injury
- Read her "My Story" feature on ClemsonTigers.com - Johnson penned a letter to Jackie Robinson for Black History Month
- Appeared in 30 games in 2021 and hit .350 in 40 at bats with a .725 slugging percentage
- Two time ACC Academic Honor Roll recipient
- Member of Clemson's POWER - a Women's Leadership Academy

58



## KYAH KELLER

\*So. • INF • 6-0 • Hollywood, Ala. • Battle Ground Academy

	AVG	AB	RUNS	HITS	RBI	BB	SB
2022	.273	33	1	9	5	2	0
Career	.254	126	8	32	22	8	0

Season Highs: H (2), RBI (2), BB (1, 2x)

- Pinch hit a RBI single against LIU to spur Clemson's eight-inning scoring run in the sixth
- Had a walk off pinch hit single vs. Liberty to bring in two runners
- Hit .256 in 90 at bats with six runs and a .367 slugging percentage
- Recorded two homers in CU's 12-1 win against North Carolina while going 3-for-3 with a career-best four RBI
- Two time ACC Academic Honor Roll member

72



## VALERIE CAGLE

\*So. • RHP/UTL • 5-9 • Yorktown, Va. • Homeschooled

	AVG	AB	RUNS	HITS	RBI	BB	SB
2022	.305	82	15	25	21	10	0
Career	.372	331	84	123	102	43	5

Season Highs: H (3, 2x), R (2, 4x), RBI (6), HR (2), HBP (1)

	ERA	W-L	APP	CG	SHO	IP	SO
2022	2.45	7-5	15	5	3/3	68.2	81
Career	1.64	44-18	74	39	14/5	375	435

Season Highs: IP (9.0), H (9), SO (13), BB (3, 3x)

- Tallied three hits and six RBIs at FGCU - including her first homer of the season
- Struck out 10 batters and hit a solo home run in Clemson's 2-0 upset over Washington
- Hit two home runs vs. Winthrop with four RBIs
- Has recorded 25 hits, seven home runs and holds a .598 slugging percentage
- Has pitched 68.2 innings with 81 strikeouts
- Preseason All-ACC selection and D1 Softball Preseason First Team All-American
- Pitched two complete-game no-hitters in 2021 in 6-0 win against Boston College and 9-0 win against Winthrop
- Joined Team USA's U-18 Junior Women's National Team

77



## HANNAH GOODWIN

\*\*Fr. • INF • 5-8 • West Columbia, S.C. • White Knoll HS

	AVG	AB	RUNS	HITS	RBI	BB	SB
2022	.000	3	0	0	0	0	0
Career	.353	85	15	30	16	5	1

Season Highs: AB (1, 3x)

- Made first appearance in 2022 as a pinch hitter vs. Charlotte
- Had one plate appearance against Gardner-Webb and Mercer
- Missed 2021 season due to injury after being tabbed a 2021 Preseason All-ACC selection
- ACC Academic Honor Roll selection
- Started 26 games at shortstop in 2020
- Led the 2020 team with a .385 average during the shortened COVID season

87



## MILLIE THOMPSON (MILL-EE)

So. • LHP/INF • 5-9 • Snow Camp, N.C. • Liberty HS

	ERA	W-L	APP	CG	SHO	IP	SO
2022	1.50	5-1	12	2	1/5	42	48
Career	1.86	14-2	31	5	1/7	120.2	118

Season Highs: IP (7.0), H (7, 2x), SO (11), NP (89)

- Started and earned her first victory of the 2022 season against Charlotte
- Struck out eight batters without giving up a walk in Clemson's 10-2 run-rule victory over Duke
- Threw Clemson's first combined no-hitter with Regan Spencer vs. Kent State
- Struck out a career-high 11 batters vs. Illinois
- Underwent successful surgery in December to correct a left forearm compartment syndrome injury

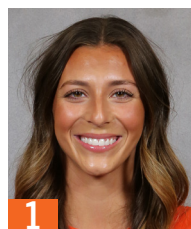
## QUICK FACTS

Nickname	Tigers
Location	Clemson, S.C. 29633
Colors	Clemson Orange & Regalia
Founded	1889
Enrollment	27,341
President	Dr. James P. Clements (Maryland-Baltimore County '85)
Director of Athletics	Graham Neff (Georgia Tech '06)
Conference	Atlantic Coast Conference
Facility (Capacity)	McWhorter Stadium (1,616)
Year Opened	2020
Dimensions	LF - 200, CF - 220, RF - 205
Record Crowd	1,616
Head Coach	John Rittman (New Mexico State '86)
Record at Clemson	81-22 (3 <sup>rd</sup> season)
Overall Record	832-375-3 (21 <sup>st</sup> season)
Associate Head Coach	Kyle Jamieson (Brock '97 & Nipissing '98)
Assistant Coach	Courtney Breault (Nebraska '13, Clemson '21)
Volunteer Assistant Coach	Reese Jacobs (Georgia Southern '79)
Director of Operations	Jeannie Murphy (Oklahoma '10, Concordia '14)
Graduate Assistant	Alyssa Bilodeau (Jacksonville '21)
Athletic Trainer	Katie Rovtar (Toledo '06 & Virginia Tech '08)
Strength Coach	Ryan Metzger (Wisconsin-Oshkosh '11 & Kentucky '15)
Sport Administrator	Natalie G. Honnen (Florida '03 & '05)
First Year of Softball	2020
Season of Softball	Third

## ACC STANDINGS

SCHOOL	CONF	CPCT.	OVERALL	PCT.	STREAK
Virginia Tech	9-0	1.000	21-3	.875	W10
Duke	8-1	.889	23-4	.852	W1
Virginia	5-1	.833	18-11	.621	W3
Florida State	7-2	.778	27-2	.931	W1
Notre Dame	4-2	.667	22-6	.786	W6
North Carolina	2-4	.333	16-13	.552	L3
Boston College	2-4	.333	13-11	.542	L1
Louisville	1-2	.333	17-10	.630	L2
Georgia Tech	2-7	.222	18-9	.667	W2
NC State	2-7	.222	19-10	.655	L7
Clemson	1-5	.167	19-8	.704	L1
Syracuse	1-5	.167	15-9	.625	W5
Pitt	1-5	.167	11-12	.478	L5

# 2022 TV ROSTER



**1**  
RACHEL GIBSON  
Fr. - RHP



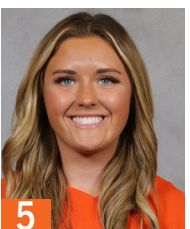
**2**  
BROOKE McCUBBIN  
Fr. - RHP/INF



**3**  
SAM RUSS  
+Gr. - OF



**4**  
ABY VIEIRA  
Fr. - C/UTL



**5**  
ANSLEY HOUSTON  
So. - INF



**6**  
CARLEE SHANNON  
\*\*So. - OF



**7**  
MCKENZIE CLARK  
So. - OF



**8**  
GRACE HILLER  
Fr. - INF/OF



**9**  
SARAH HOWELL  
So. - C/UTL



**10**  
EMMA WHITFIELD  
\*So. - RHP



**11**  
HAYLEE WHITESIDES  
Fr. - RHP/INF



**12**  
CAMMY PEREIRA  
\*\*Gr. - INF/OF



**13**  
ABI STUART  
\*So. - C/UTL



**15**  
MADISON MAY  
\*So. - OF/INF



**16**  
ALIA LOGOLEO  
\*So. - OF/INF



**17**  
REGAN SPENCER  
So. - RHP



**18**  
BAILEY TAYLOR  
\*Gr. - INF



**19**  
JADEN CHEEK  
So. - INF/OF



**21**  
JADEYN RUSZKOWSKI  
Fr. - INF



**23**  
JoJo HYATT  
\*\*So. - C



**24**  
ARIELLE ODA  
\*\*So. - OF/INF



**25**  
MARISSA GUIMBARDA  
\*Gr. - UTL



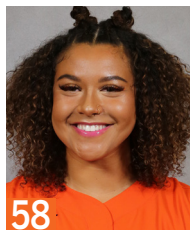
**27**  
GRACE MATTIMORE  
\*Gr. - C/UTL



**28**  
MADDIE MOORE  
Fr. - INF



**42**  
MORGAN JOHNSON  
\*So. - OF



**58**  
KYAH KELLER  
\*So. - INF



**72**  
VALERIE CAGLE  
\*So. - RHP/UTL



**77**  
HANNAH GOODWIN  
\*\*Fr. - INF



**87**  
MILLIE THOMPSON  
So. - LHP



**HC**  
JOHN RITTMAN  
3rd Season



**AC**  
KYLE JAMIESON  
3rd Season



**AC**  
COURTNEY BREAUT  
3rd Season



**VC**  
REESE JACOBS  
3rd Season



**GA**  
ALYSSA BIODEAU  
1st Season



**DO**  
JEANNIE MURPHY  
3rd Season

# PLAYER HIGHS

## #1 RACHEL GIBSON

CAREER (LAST)	CATEGORY	2022
Same	IP	
Same	Runs Allowed	4 (Akron 2/26)
Same	Earned Runs	3 (Akron 2/26)
	Walks Issued	
	Strikeouts	
Same	Hits Allowed	1 (Akron 2/26)
	Doubles Allowed	
	Triples Allowed	
	Homers Allowed	

## #2 BROOKE McCUBBIN

CAREER (LAST)	CATEGORY	2022
Same	IP	5.1 (vs Northwestern 2/19)
Same	Runs Allowed	7 (vs Northwestern 2/19)
Same	Earned Runs	5 (at Duke 3/20)
Same	Walks Issued	2, 4x (at Duke 3/20)
Same	Strikeouts	5 (Winthrop 3/15)
Same	Hits Allowed	9 (vs Northwestern 2/19)
Same	Doubles Allowed	1, 4x (at Duke 3/20)
Same	Triples Allowed	
Same	Homers Allowed	1 (vs Northwestern 2/19)

## #3 SAM RUSS

CAREER (LAST)	CATEGORY	2022
Same	Runs	2, 2x (Liberty 3/13)
Same	Hits	3 (vs LIU 2/12)
Same	RBI	2, 2x (at Duke 3/19)
Same	Doubles	1, 2x (vs Wisconsin 2/19)
Same	Triples	1, 4x (at Duke 3/19)
Same	Home Runs	1, 2x (at Duke 3/20)
Same	Walks	2, 2x (Liberty 3/13)
Same	HBP	1, 2x (at Duke 3/20)
Same	Stolen Bases	2, 4x (Liberty 3/14)

## #4 ABY VIEIRA

CAREER (LAST)	CATEGORY	2022
Same	Runs	1, 3x (Akron 2/26)
Same	Hits	2, 2x (Boston U 2/25)
Same	RBI	4 (Akron 2/26)
Same	Doubles	1 (at Charlotte 2/23)
	Triples	
	Home Runs	1 (Akron 2/26)
Same	Walks	1, 2x (Akron 2/26)
	HBP	
	Stolen Bases	

## #5 ANSLEY HOUSTON

CAREER (LAST)	CATEGORY	2022
Same	Runs	1, 7x (at Duke 3/19)
-	Hits	
-	RBI	
-	Doubles	
-	Triples	
-	Home Runs	
-	Walks	
-	HBP	
Same	Stolen Bases	1 (Virginia Tech 3/5)

## #6 CARLEE SHANNON

CAREER (LAST)	CATEGORY	2022
1, 30x (at Duke 3/19/22)	Runs	1, 7x (at Duke 3/19)
-	Hits	
-	RBI	
-	Doubles	
-	Triples	
-	Home Runs	
-	Walks	
-	HBP	
2 (Winthrop 4/13/21)	Stolen Bases	1, 10x (at Duke 3/19)

## #7 McKENZIE CLARK

CAREER (LAST)	CATEGORY	2022
4 (at FGCU 2/10)	Runs	4 (at FGCU 2/10)
4 (Akron 2/26/22)	Hits	4 (Akron 2/26)
3, 2x (North Carolina 4/3/21)	RBI	2, 3x (Mercer 3/9)
2, 3x (Mercer 3/9/22)	Doubles	2 (Mercer 3/9)
1, 8x (Virginia Tech 3/5/22)	Triples	1, 2x (Virginia Tech 3/5)
1, 11x (at Duke 3/18/22)	Home Runs	1, 2x (at Duke 3/18)
2, 3x ((Gardner-Webb 3/1/22)	Walks	2 (Gardner-Webb 3/1)
1, 8x (Virginia Tech 3/6/22)	HBP	1, 3x (Virginia Tech 3/6)
3 (Elon 2/27/21)	Stolen Bases	1, 4x (at Duke 3/20)

## #8 GRACE HILLER

CAREER (LAST)	CATEGORY	2022
	Runs	
	Hits	
	RBI	
	Doubles	
	Triples	
	Home Runs	
	Walks	
	HBP	
	Stolen Bases	

## #9 SARAH HOWELL

CAREER (LAST)	CATEGORY	2022
1, 5x (North Carolina 4/3/21)	Runs	
1 (at North Florida 2/12/21)	Hits	
-	RBI	
-	Doubles	
-	Triples	
-	Home Runs	
-	Walks	
-	HBP	
2 (at Virginia 3/7/21)	Stolen Bases	

## #10 EMMA WHITFIELD

CAREER (LAST)	CATEGORY	2022
5.0 (Charlotte 3/4/20)	IP	1.0 (Akron 2/26)
3 (vs St. John's 2/9/20)	Runs Allowed	1 (Akron 2/26)
3 (vs St. John's 2/9/20)	Earned Runs	1 (Akron 2/26)
3 (Pittsburgh 3/7/20)	Walks Issued	
3, 4x (Furman 3/13/21)	Strikeouts	1 (Akron 2/26)
5 (Charlotte 3/4/20)	Hits Allowed	2 (Akron 2/26)
2 (Maryland 2/15/20)	Doubles Allowed	
1 (Akron 2/26/22)	Triples Allowed	1 (Akron 2/26)
1, 5x (Winthrop 4/13/21)	Homers Allowed	

## #11 HAYLEE WHITESIDES

CAREER (LAST)	CATEGORY	2022
	IP	
	Runs Allowed	
	Earned Runs	
	Walks Issued	
	Strikeouts	
	Hits Allowed	
	Doubles Allowed	
	Triples Allowed	
	Homers Allowed	

## #12 CAMMY PEREIRA

CAREER (LAST)	CATEGORY	2022
3 (Maryland 2/15/20)	Runs	2, 2x (at Duke 3/19)
3, 10x (at Duke 3/19/22)	Hits	3, 3x (at Duke 3/19)
3, 2x (vs Kent State 2/11/22)	RBI	3 (vs Kent State 2/11)
1, 11x (Boston U 2/25/22)	Doubles	1, 4x (Boston U 2/25)
1, 2x (North Carolina 4/2/21)	Triples	
2 (vs Georgia Tech 5/13/21)	Home Runs	1 (at FGCU 2/10)
2 (Boston College 4/17/21)	Walks	1, 5x (Winthrop 3/15)
2 (Virginia 2/28/20)	HBP	1, 4x (Akron 2/26)
1, 9x (vs Troy 5/21/21)	Stolen Bases	

## #13 ABI STUART

CAREER (LAST)	CATEGORY	2022
3 (vs St. John's 2/9/20)	Runs	1 (vs Kent State 2/11)
2, 6x (Boston College 4/16/21)	Hits	
3, 3x (Winthrop 4/13/21)	RBI	
2 (Furman 3/12/21)	Doubles	
-	Triples	
1, 5x (North Carolina 4/2/21)	Home Runs	
2 (Western Carolina 2/12/20)	Walks	1, 2x (Liberty 3/14)
1, 2x (Boston College 4/17/21)	HBP	
-	Stolen Bases	

## #15 MADSION MAY

CAREER (LAST)	CATEGORY	2022
Same	Runs	1, 2x (vs Texas Tech 2/17)
Same	Hits	2 (vs Wisconsin 2/19)
Same	RBI	2 (vs Texas Tech 2/17)
Same	Doubles	1, 2x (at Charlotte 2/23)
-	Triples	
-	Home Runs	
Same	Walks	2, 2x (vs Tennessee 2/18)
Same	HBP	1 (vs Tennessee 2/18)
-	Stolen Bases	

# PLAYER HIGHS

## #16 ALIA LOGOLEO

CAREER (LAST)	CATEGORY	2022
4 (at Syracuse 5/9/21)	Runs	2, 2x (Boston U 2/25)
4 (at Syracuse 5/9/21)	Hits	3 (Boston U 2/26)
10 (at Syracuse 5/9/21)	RBI	4 (vs Kent State 2/11)
2, 2x (at Charlotte 2/23/22)	Doubles	2 (at Charlotte 2/23)
1, 2x (Morgan State 2/23/20)	Triples	
3 (at Syracuse 5/9/21)	Home Runs	1, 3x (Winthrop 3/15)
2 (Virginia 2/29/20)	Walks	1, 4x (Liberty 3/13)
1, 7x (at Duke 3/19/22)	HBP	1, 2x (at Duke 3/19)
2 (vs Virginia Tech 5/14/21)	Stolen Bases	1 (vs Texas Tech 2/17)

## #17 REGAN SPENCER

CAREER (LAST)	CATEGORY	2022
7.0, 2x (St. Francis 2/25/22)	IP	7.0 (St. Francis 2/25)
3, 2x (Liberty 3/13/22)	Runs Allowed	3 (Liberty 3/13)
3 (Boston College 4/17/21)	Earned Runs	2 (Liberty 3/13)
3, 3x (Liberty 3/13/22)	Walks Issued	3 (Liberty 3/13)
8 (at Louisville 3/20/21)	Strikeouts	4 (vs Kent State 2/11)
7 (at Georgia Tech 2/21/21)	Hits Allowed	5 (St. Francis 2/25)
2 (Boston College 4/17/21)	Doubles Allowed	1, 2x (at Duke 3/20)
-	Triples Allowed	
1, 4x (Liberty 3/13/22)	Homers Allowed	1 (Liberty 3/13)

## #18 BAILEY TAYLOR

CAREER (LAST)	CATEGORY	2022
3, 2x (Virginia 3/1/20)	Runs	
2, 5x (Liberty 3/13/22)	Hits	2 (Liberty 3/13)
4 (Maryland 2/15/20)	RBI	1, 2x (Liberty 3/13)
1, 2x (Virginia 2/28/20)	Doubles	
-	Triples	
1, 2x (Pittsburgh 3/6/20)	Home Runs	
2 (Maryland 2/15/20)	Walks	
Same	HBP	2 (vs Kent State 2/11)
-	Stolen Bases	

## #19 JADEN CHEEK

CAREER (LAST)	CATEGORY	2022
1 (North Carolina 4/3/21)	Runs	
1 (Furman 3/23/21)	Hits	
-	RBI	
-	Doubles	
-	Triples	
-	Home Runs	
-	Walks	
-	HBP	
1, 2x (NC State 4/23/21)	Stolen Bases	

## #21 JADEYN RUSZKOWSKI

CAREER (LAST)	CATEGORY	2022
	Runs	
	Hits	
	RBI	
	Doubles	
	Triples	
	Home Runs	
	Walks	
	HBP	
	Stolen Bases	

## #23 JoJo HYATT

CAREER (LAST)	CATEGORY	2022
3 (Maryland 2/15/20)	Runs	1 (Mercer 3/9)
3 (at Syracuse 5/9/21)	Hits	2, 2x (at Duke 3/18)
3 (vs Texas Tech 2/17/22)	RBI	3 (vs Texas Tech 2/17)
1, 3x (at Syracuse 5/8/21)	Doubles	
1, 2x (vs Texas Tech 2/17/22)	Triples	1 (vs Texas Tech 2/17)
1 (at Virginia 3/7/21)	Home Runs	
2, 2x (Boston College 4/17/21)	Walks	1, 5x (at Duke 3/20)
1, 4x (at Duke 3/19/22)	HBP	1 (at Duke 3/19)
-	Stolen Bases	

## #24 ARIELLE ODA

CAREER (LAST)	CATEGORY	2022
2, 2x (Charlotte 3/4/20)	Runs	1, 5x (Illinois 3/12)
1, 6x (Virginia Tech 3/6/22)	Hits	1, 4x (Virginia Tech 3/6)
2 (Charlotte 3/4/20)	RBI	
1 (Boston U 2/25/22)	Doubles	1 (Boston U 2/25)
1 (Charlotte 3/4/20)	Triples	
-	Home Runs	
1, 7x (Charlotte 3/4/20)	Walks	
1, 3x (Gardner-Webb 3/1/22)	HBP	1 (Boston U 2/25)
1, 2x (Illinois 3/12/22)	Stolen Bases	1 (Illinois 3/12)

## #25 MARISSA GUIMBARDA

CAREER (LAST)	CATEGORY	2022
2, 7x (Akron 2/26/22)	Runs	2, 2x (Akron 2/26)
3, 3x (Furman 3/12/21)	Hits	2, 5x (Liberty 3/13)
5 (Charlotte 3/4/20)	RBI	3, 5x (at Duke 3/19)
2, 2x (Liberty 3/13/22)	Doubles	2 (Liberty 3/13)
1 (Morgan State 2/23/20)	Triples	
2 (vs Troy 2/21/20)	Home Runs	1, 5x (Illinois 3/13)
3 (Virginia 2/28/20)	Walks	3, 2x (Winthrop 3/15)
3 (at Georgia Tech 2/21/21)	HBP	1, 2x (Mercer 3/9)
1, 2x (at Duke 3/18/22)	Stolen Bases	1 (at Duke 3/18)

## #27 GRACE MATTIMORE

CAREER (LAST)	CATEGORY	2022
2, 4x (North Carolina 4/2/21)	Runs	1 (Virginia Tech 3/6)
2, 9x (North Carolina 4/2/21)	Hits	1 (Virginia Tech 3/6)
4 (vs St. John's 2/9/20)	RBI	
2 (Charlotte 3/4/20)	Doubles	1 (Virginia Tech 3/6)
-	Triples	
1 (North Carolina 4/2/21)	Home Runs	
3, 2x (at Syracuse 5/8/21)	Walks	
2 (vs Illinois State 2/12/21)	HBP	1 (Mercer 3/9)
1 (vs Illinois State 2/12/21)	Stolen Bases	

## #28 MADDIE MOORE

CAREER (LAST)	CATEGORY	2022
Same	Runs	1, 9x (at Duke 3/19)
Same	Hits	1, 7x (Illinois 3/12)
Same	RBI	2 (Boston U 2/26)
Same	Doubles	1, 2x (Mercer 3/9)
-	Triples	
Same	Home Runs	1 (Boston U 2/26)
Same	Walks	1, 4x (at Duke 3/19)
-	HBP	
Same	Stolen Bases	1, 2x (Winthrop 3/15)

## #58 KYAH KELLER

CAREER (LAST)	CATEGORY	2022
3 (North Carolina 4/2/21)	Runs	1 (Mercer 3/9)
3 (North Carolina 4/2/21)	Hits	2 (at Duke 3/19)
4 (North Carolina 4/2/21)	RBI	2 (Liberty 3/13)
1, 3x (Mercer 3/9/22)	Doubles	1 (Mercer 3/9)
1 (NC State 4/23/21)	Triples	
2 (North Carolina 4/2/21)	Home Runs	
1, 8x (Virginia Tech 3/4/22)	Walks	1, 2x (Virginia Tech 3/4)
1, 3x (Gardner-Webb 3/1/22)	HBP	1 (Gardner-Webb 3/1)
-	Stolen Bases	

## #72 VALERIE CAGLE

CAREER (LAST)	CATEGORY	2022
3, 3x (vs Troy 5/21/21)	Runs	2, 4x (at Duke 3/19)
4, 2x (Virginia 2/28/20)	Hits	3, 2x (at Charlotte 2/23)
8 (Maryland 2/15/20)	RBI	6 (at FGCU 2/10)
2 (Furman 3/13/21)	Doubles	1, 3x (Boston U 2/26)
1 (Duke 3/28/21)	Triples	
2, 7x (Winthrop 3/15/22)	Home Runs	2 (Winthrop 3/15)
3, 2x (Akron 2/26)	Walks	3 (Akron 2/26)
1 (vs Kent State 2/11)	HBP	1 (vs Kent State 2/11)
1, 5x (Winthrop 4/13/21)	Stolen Bases	
11.0 (at Louisville 3/19/21)	IP	9.0 (vs Tennessee 2/18)
10 (vs Duke 2/7/20)	Runs Allowed	6, 2x (at Duke 3/18)
10 (vs Duke 2/7/20)	Earned Runs	6, 2x (at Duke 3/18)
6 (vs Georgia Tech 5/13/21)	Walks Issued	3, 3x (Virginia Tech 3/6)
14, 3x (vs Georgia Tech 5/13/21)	Strikeouts	13 (vs Tennessee 2/18)
10 (vs Duke 2/7/20)	Hits Allowed	9 (Virginia Tech 3/4)
3 (Virginia 2/28/20)	Doubles Allowed	1, 2x (at Duke 3/18)
1, 3x (vs Tennessee 2/18/22)	Triples Allowed	1 (vs Tennessee 2/18)
2, 2x (vs Tennessee 2/18/22)	Homers Allowed	2, 2x (at Duke 3/18)

## #77 HANNAH GOODWIN

CAREER (LAST)	CATEGORY	2022
2, 3x (Pittsburgh 3/6/20)	Runs	
3, 2x (vs Stetson 2/22/20)	Hits	
4 (vs St. John's 2/7/20)	RBI	
1, 5x (Pittsburgh 3/6/20)	Doubles	
-	Triples	
1, 4x (Pres. College 3/10/20)	Home Runs	
2 (Michigan State 2/16/20)	Walks	
1, 4x (Georgia 2/26/20)	HBP	
1 (at UNCG 2/18/20)	Stolen Bases	

## #87 MILLIE THOMPSON

CAREER (LAST)	CATEGORY	2022
7.0, 3x (Illinois 3/13/22)	IP	7.0 (Illinois 3/13)
3, 5x (Virginia Tech 3/5/22)	Runs Allowed	3 (Virginia Tech 3/5)
3, 2x (NC State 4/23/21)	Earned Runs	2, 4x (at Duke 3/20)
3, 3x (vs. Troy 5/22/21)	Walks Issued	3 (at Charlotte 2/23)
11 (Illinois 3/13/22)	Strikeouts	11 (Illinois 3/13)
8, 3x (NC State 4/23/21)	Hits Allowed	7, 2x (Virginia Tech 3/5)
2, 5x (at Duke 3/19/22)	Doubles Allowed	2 (at Duke 3/19)
-	Triples Allowed	
1, 8x (at Duke 3/20/22)	Homers Allowed	1, 3x (at Duke 3/20)