



GAME NOTES

CLEMSON SOFTBALL

#TEAM3

GAME 36-37: CLEMSON VS FURMAN

WEDNESDAY, APRIL 6

MCWHORTER STADIUM • CLEMSON, S.C.

THIS WEEK

- **Wednesday, April 6**
- No. 18/T17 Clemson vs. Furman - 2 p.m. & 4 p.m.
- **Friday, April 8**
- No. 18/T17 Clemson at Pitt - 5 p.m.
- **Saturday, April 9**
- No. 18/T17 Clemson at Pitt - 1 p.m.
- **Sunday, April 10**
- No. 18/T17 Clemson at Pitt - 12 p.m.
- **Where:**
- Wednesday: McWhorter Stadium | Clemson, S.C.
- Weekend Series: Vatabedian Field | Pittsburgh, Pa.
- **Watch:** The midweek games against Furman will be broadcast on ACCNX. Friday's game is available on the ACC Network with Courtney Lyle and Danielle Lawrie on the call. Saturday and Sunday are back on ACCNX.
- **Live Stats** - ClemsonTigers.com/softball/schedule
- **Social Media** - [ClemsonSoftball](https://www.facebook.com/ClemsonSoftball)

CLEMSON OVERVIEW

- Clemson returns 21 players from last season to the 2022 roster and added eight newcomers.
- Most recently, the Tigers swept the weekend series at North Carolina after defeating South Carolina in a midweek game at McWhorter Stadium.
- The Tigers are batting .278 as a team with a .472 slugging percentage and .376 on-base percentage.
- Clemson's pitching staff is posting a 1.82 ERA through 230.2 innings of work and struck out a combined 236 batters.

FURMAN OVERVIEW

- Furman is led by interim head coach Stacey Johnson-Whitfield.
- As a team, the Paladins are batting .230 off 169 hits, stolen 30 bases and scored 117 runs. In the circle, the team holds a 4.35 ERA with 90 strikeouts through 186.2 innings pitched.
- Emily Bartlett leads Furman with a .346 average with 27 hits, 19 RBIs and a .615 slugging percentage. Sierra Tufts holds a 4.41 ERA through 17 appearances with 43 strikeouts.

QUICK HITS

- Clemson has outscored opponents this season 176-78.
- The Tigers have run-ruled nine opponents this season: FGCU, Kent State, LIU, Texas Tech, Boston U, Winthrop and three ACC opponents (Duke, Louisville and North Carolina).
- Clemson has 247 hits through 35 games, including posting 39 doubles and 40 home runs.
- The Tigers have 160 RBIs this season led by Valerie Cagle (30), Marissa Guimbarada (29), Alia Logoleo (29) and McKenzie Clark (16).
- When Clemson scores in the first inning, the Tigers are 12-2. The Tigers have outscored opponents 32-6 in the first inning.
- The Tigers are 23-4 when scoring first this season, no matter what inning.

THE NATIONALLY RANKED TIGERS

- The latest USA Today/NFCA poll has Clemson at No. 18.

- ESPN/USA Softball has the Tigers clocking in at No. 16 dropping from 15.
- D1Softball.com and Softball America round out the polls with Clemson sitting at No. 19 in both.
- Clemson received its first single-digit ranking in program history clocking in at No. 9 on the ESPN/USA Softball poll during the third week. They held the ranking for two weeks.
- Last season, Clemson climbed as high as No. 10 by ESPN/USA Softball and finished No. 17 last season.
- The RPI leading into week nine had Clemson at No. 12 and No. 7 on 2022 strength of schedule.

STANDOUT MOMENTS

- Opening weekend, Clemson only played 23 innings after run-ruling opponents in three games - two during the fifth inning and one in the sixth.
- Sophomores Regan Spencer and Millie Thompson threw Clemson's first combined no-hitter against Kent State, a five-inning run-rule victory.
- Sophomore McKenzie Clark hit the program's first inside the park home run against Akron on Feb. 26 dropping a ball into right center. She crossed home two steps ahead of the throw reaching the plate.
- Freshman Aby Vieira recorded her first collegiate home run with a grand slam out of right center against Akron. The grand slam was Clemson's first of the season.
- The Tigers defeated No. 13/8 Duke in run-rule fashion for another program first picking up a five-inning 10-2 win behind an eight strikeout performance from Millie Thompson in the circle.
- The Tigers dominated the Gamecocks in the first matchup between the two in McWhorter Stadium. Cagle struck out 11 batters in the circle while joining Logoleo and Clark hitting the long ball as Clemson won, 8-1.
- Clemson finished with 10 home runs against the Tar Heels led by Marissa Guimbarada hitting four, Alia Logoleo hitting three - including a grand slam, Aby Vieira hitting two and Maddie Moore tallying one.
- Marissa Guimbarada was named ACC Co-Player of the Week after the UNC series where she recorded four homers and eight RBIs. Guimbarada was also selected as one of the top NFCA performances of the week alongside teammate Alia Logoleo who tallied four home runs and 12 RBIs through four games.

MCKENZIE "PIE" CLARK

- Sophomore McKenzie Clark got off to a slow start in 2022 but hit her stride nicely in the middle of the season ready to prove why she was an ACC Preseason Selection.
- Clark, best known by her nickname "Pie," has been flexible and productive in the lineup floating between the leadoff and second spot.
- In her last three games, she has recorded three homers - including two in the second game against Louisville and one in the midweek against South Carolina.
- Also against the Gamecocks, Clark was only a triple away from hitting for the cycle after clocking a single, double and home run with two runs scored.
- Clark is batting .343 in conference play clocking 12 hits - including three home runs - 11 runs scored and eight RBIs (all of which are team highs).
- On the season as a whole, Clark is batting a team high

CLEMSON AT A GLANCE

Overall Record:	25-10
ACC Record:	6-6
Home Record:	14-4
Away Record:	6-3
Neutral Record:	5-3
Streak:	W4
Last 5 Games:	4-1
Last 10 Games:	7-3
Day Record:	14-5
Night Record:	11-5

HEAD COACH JOHN RITTMAN

Third Season at Clemson:	88-26 (.771)
ACC Record (Regular Season):	40-12 (.769)
21st Year Overall:	838-377-3 (.688)

CLEMSON HISTORY

All-Time:	88-26
All-Time Record, Home:	51-10
All-Time Record, Away:	23-8
All-Time Record, Neutral:	14-8

VS FURMAN

All-Time:	3-0
Last Clemson Win:	3/13/21, Clemson 8, Furman 1
Last Furman Win:	N/A
Streak:	W3

*Note: A full 2022 schedule is available on the second page
 *Note to media members: Credential requests for home games at McWhorter Stadium open on the preceeding Monday of each game. Requests can be made at ClemsonTigers.com/softball under Media Resources.

WEEKLY POLLS

Date	W-L	2022				
		NFCA	ESPN	D1	SA	
2-7	0-0	15	14	14	14	
2-15	3-1	15	12	13	14	
2-22	6-3	15	9	13	12	
3-1	11-3	14	9	13	11	
3-8	12-6	17	15	17	17	
3-15	17-6	17	15	18	19	
3-22	18-8	16	15	19	21	
3-29	21-10	18	16	19	21	
4/5	25-10	18	T17	19	19	

Date	W-L	2021				
		NFCA	ESPN	D1	SA	
3-29	22-4	18	19	23	20	
4-5	26-4	18	18	20	19	
4-12	26-4	17	18	19	19	
4-17	32-4	16	16	18	16	
4-26	37-4	13	13	15	13	
5-3	37-4	13	11	15	13	
5-10	40-5	13	10	16	13	
5-17	42-6	13	10	17	14	
6-10	44-8	18	17	19	22	

Note: Clemson's all-time rankings can be found in the Clemson softball record book.

Stats and notes are updated going into series only

NOTES

2022 SCHEDULE

Date	Day	Opponent (Rank)	Watch	Time/Result
2-10	Thu	\$ at FGCU	Youtube	W, 11-0 (5)
2-11	Fri	\$ Kent State	N/A	W, 8-0 (5)
2-11	Fri	\$ Texas	N/A	L, 0-4
2-12	Sat	\$ LIU	N/A	W, 8-0 (6)
2-13	Sun	\$ Boston College	N/A	Canceled
2-17	Thu	% Texas Tech	ACCN	W, 8-0 (5)
2-18	Fri	% Tennessee	ESPN+	W, 4-3 (9)
2-19	Sat	% Northwestern	ACCN	L, 0-7
2-19	Sat	% Wisconsin	ESPN+	L, 1-2 (8)
2-20	Sun	% Washington	ESPNU	W, 2-0
2-23	Wed	at Charlotte	ESPN+	W, 5-2
2-25	Fri	# Boston University	ACCNX	W, 8-0 (5)
2-25	Fri	# St. Francis	ACCNX	W, 2-0
2-26	Sat	# Akron	ACCNX	W, 10-5
2-26	Sat	# Boston University	ACCNX	W, 7-3
3-1	Tue	Gardner-Webb	ACCNX	W, 6-0
3-4	Fri	* Virginia Tech	ACCN	L, 1-6
3-5	Sat	* Virginia Tech	ACCNX	L, 0-4
3-6	Sun	* Virginia Tech	ACCNX	L, 2-4
3-9	Wed	Mercer	ACCNX	W, 3-0
3-12	Sat	! Illinois	ACCNX	W, 3-1
3-13	Sun	! Illinois	ACCNX	W, 4-0
3-13	Sun	! Liberty	ACCNX	W, 5-4 (8)
3-14	Mon	! Liberty	ACCNX	W, 1-0 (8)
3-15	Tue	Winthrop	ACCNX	W, 8-0 (5)
3-18	Fri	* at Duke	ACCNX	L, 2-6
3-19	Sat	* at Duke	ACCNX	W, 10-2 (5)
3-20	Sun	* at Duke	ACCN	L, 1-7
3-23	Wed	at Georgia	SECN	L, 2-3
3-25	Fri	* Louisville	ACCNX	W, 5-2
3-26	Sat	* Louisville	ACCN	W, 8-0 (5)
3-27	Sun	* Louisville	ACCN	L, 2-4 (8)
3-30	Wed	South Carolina	ACCN	W, 8-1
4-1	Fri	* at North Carolina	ACCNX	W, 12-4
4-2	Sat	* at North Carolina	N/A	W, 7-0
4-3	Sun	* at North Carolina	ACCNX	W, 12-4 (5)
4-6	Wed	Furman	ACCNX	4 p.m.
4-6	Wed	Furman	ACCNX	6 p.m.
4-8	Fri	* at Pittsburgh	ACCN	5 p.m.
4-9	Sat	* at Pittsburgh	ACCNX	1 p.m.
4-10	Sun	* at Pittsburgh	ACCNX	12 p.m.
4-12	Tue	at South Carolina	ESPNU	6 p.m.
4-14	Thu	* Notre Dame	ACCNX	6 p.m.
4-15	Fri	* Notre Dame	ACCNX	6 p.m.
4-16	Sat	* Notre Dame	ACCNX	1 p.m.
4-21	Thu	* at Florida State	ESPN2	9 p.m.
4-22	Fri	* at Florida State	ACCN	6 p.m.
4-23	Sat	* at Florida State	ACCN	2 p.m.
4-27	Wed	ETSU	ACCNX	6 p.m.
4-29	Fri	* Georgia Tech	ACCNX	6 p.m.
4-30	Sat	* Georgia Tech	RSN	1 p.m.
5-1	Sun	* Georgia Tech	RSN	12 p.m.
5-11 - 5-14	^	ACC Championship	ACCN	TBA
5-19 - 5-22	&	NCAA Regionals	TBA	TBA
5-26 - 5-29	&	NCAA Super Regionals	TBA	TBA
6-2 - 6-9	&	NCAA Women's College World Series	TBA	TBA

Note: Home games in **bold**; all times are Eastern
 * - ACC regular-season game
 \$ - FGCU Kickoff Classic (Fort Myers, Fla.)
 % - St. Pete/Clearwater Elite Invitational (Clearwater, Fla.)
 # - Clemson Classic (Clemson, S.C.)
 ! - Tiger Invitational (Clemson, S.C.)
 ^ - ACC Championship (Louisville, Ky.)
 & - NCAA Tournament (Oklahoma City, Okla.)

.306 off 33 hits with 16 RBIs and 28 runs scored. She has also stolen five bases and hit five home runs - including an inside the park homer vs. Akron.
 • Defensively, Clark is one of three consistent starters that has posted a perfect 1.000 fielding percentage covering the center field grass with ease and grace putting her on pace to be in the top running for an inaugural Golden Glove Award.

CONSISTENT CAMMY

• Cammy Pereira has been a consistent presence since signing to join Clemson's inaugural class being the Tigers' go-to face of the program in different situations.
 • Pereira was recently recognized at the Clemson Board Meeting as a notable student-athlete having been the driving force to multiple Clemson initiatives including but not limited to: being the leader of the Tigers Unite affinity group CU Pride, spoken at several panels regarding issues in the LGBTQ community, participating in Clemson academic research, is a Paw Pal mentor and a student liaison for the We CU Committee for staff engagement.
 • Following her time at Clemson, Pereira will attend medical school at Via College of Osteopathic Medicine beginning in July.
 • Pereira became the third softball player at Clemson to be awarded the Weaver-James-Corrigan postgraduate scholarship by the ACC.
 • On the field this season, Pereira has started every game at second base and maintains a .300 average with 18 runs scored and 12 RBIs.
 • She hit the first home run of the 2022 season against FGCU and the most recently homer at Georgia - both were solo home runs in the second inning.

FIRST 100

• Clemson softball played its 100th game in program history on March 13 against Illinois at the Tiger Invitational. The Tigers won 4-0 behind Millie Thompson's first collegiate career shutout with a career-high 11 strikeouts.
 • The 100th game was played almost five years to the date of the program being announced - program addition was announced on March 14, 2017.
 • Through the first 100 games, the softball team paced itself to tie the best start by any program at Clemson. Softball ties women's tennis with 78 wins. Other sports at Clemson can be found below.
 • Among current Clemson head coaches through their first 100 games, Coach Rittman solidified himself as the coach with the best record.
 • Rittman recorded 78 wins to surpass baseball's Monte Lee and football's Dabo Swinney, who each held a 74-26 record through 100 games.

FIRST 100 GAMES - BY PROGRAM

Sport (1st Year)	Wins	Loss	Ties	Percentage
Softball (2020)	78	22	-	.780
Women's Tennis (1976)	78	22	-	.780
WBasketball (1975-76)	73	37	-	.730
Women's Soccer (1994)	69	29	2	.700
Volleyball (1977)	68	32	-	.680
Men's Soccer (1934)	63	27	10	.680
Baseball (1896)	60	36	4	.620
Football (1896)	58	34	8	.620
MBasketball (1911-12)	55	44	1	.555
Men's Tennis (1921)	47	48	5	.495

CAGLE CALLS GAME

• Prior to 2022, Cagle was named a Preseason First Team All-American by D1Softball and Softball America.
 • At the St. Pete/Clearwater Elite Invitational, Cagle opened the weekend with a five-inning run rule victory over Texas Tech.

• She followed the TTU game with a nine inning performance in the circle to defeat No. 18/15 Tennessee. She struck out 13 batters en route to earning the victory.
 • Cagle threw a complete-game shutout against the No. 6/5 Huskies with 10 strikeouts and hit a solo homer in the sixth inning to upset Washington.
 • Cagle hit two home runs in the midweek game against Winthrop clocking a solo homer in the first inning and her second in the fourth inning to extend the Tiger's lead to 8-0 en route to earning the run-rule victory.
 • Against Louisville, the Yorktown, Va. native picked up 12 strikeouts in eight innings of work and limited opponents to a .138 batting average - she also shutout the Cardinals in five innings of work for the run-rule victory on Saturday.
 • In the midweek against South Carolina, Cagle notched 11 strikeouts in the circle and kicked off the game with a three-run homer in the bottom of the first.
 • Last season, Cagle became the first softball player in ACC history to be named both the Player and Freshman of the Year.
 • She was named a NFCA Second Team All-American, a NFCA National Freshman of the Year Top-3 finalist and a USA Softball Collegiate Player of the Year Top 10 Finalist last season.

TOP 25 VICTORIES

• The Tigers defeated two top 25 programs at the St. Pete/Clearwater Elite Invitational in No. 18/15 Tennessee an No. 6/45 Washington.
 • Clemson took Tennessee to nine innings to earn the 4-3 win with six players recording a hit, including Marissa Guimbarda hitting a solo blast out of left field.
 • Clemson picked up its first top-10 victory in program history defeating the No. 6/5 Washington Huskies in seven innings on the final day of the 2022 St. Pete/Clearwater Elite Invitational.
 • Valerie Cagle earned both wins in the circle. She threw all 9.0 innings with 13 strikeouts against Tennessee and a complete 7.0 inning game against the Huskies, picking up 10 strikeouts and limiting them to only four hits.
 • The Washington win was Clemson's first seven-inning win this season and handed the Huskies their first loss.
 • The Tigers captured a run-rule victory over a ranked opponent for the first time in program history defeating No. 13/8 Duke in five innings, 10-2.
 • Millie Thompson pitched all five innings, striking out eight batters without giving up a walk to earn the victory for the Tigers.

GUIMBARDA GREATNESS

• Graduate Marissa Guimbarda has been a key contributor to Clemson's offense over the past three seasons.
 • Prior to her time in the Orange and Regalia, Guimbarda played two seasons at Furman.
 • Most recently, Guimbarda hit four home runs against North Carolina to bring her career total to 57. She is currently ranked fifth among action players in the NCAA for most home runs in her career.
 • She hit 24 while at Furman and has 33 at Clemson.
 • Guimbarda becomes the 196th player in NCAA Division I history to hit 50 homers during her collegiate career.

DANGE(RUSS)

• Graduate transfer Sam Russ comes to Clemson to use her final year of eligibility.
 • Russ decided to use her extra year at Clemson after her father played baseball for the Tigers from 1980-83 and her mom graduated from Clemson.
 • Russ spent her first four years at NC State where she was a three-time ACC selection and holds the Wolf-pack's record for both career (103) and single season



NOTES

(32) stolen bases.

- She currently ranks first in the NCAA among active D1 players for most career stolen bases (121).
- She hit her first home run in the Orange and Regalia against Liberty at the Tiger Invitational and second against Duke.

PITCHER PROWESS

- Despite being young, Clemson's pitching staff proves they are up for any battle.
- The Tigers have four consistent pitchers that have pitched a minimum of 36 innings in 2022 with at least four wins- Valerie Cagle (97.1 - 10), Millie Thompson (56 - 7), Regan Spencer (39.2 - 4) and Brooke McCubbin (36.2 - 4).
- As a group, they are posting a 1.82 ERA with 236 strikeouts through 230.2 innings and have limited opponents to a .239 batting average or lower.
- Cagle has appeared in 20 games with nine complete performances, four solo shutouts and two saves. She has 124 strikeouts on the year.
- Thompson came back even stronger for her second year in the Orange and Regalia clocking 63 strikeouts in 14 appearances.
- Spencer has been Clemson's hidden threat appearing in 13 games with one solo shutout, four combined and has struck out 27 batters. She has only allowed 28 hits this season and allowed only nine runs, six earned, to cross home while in the circle.
- Spencer is limiting opponents to a .194 average at the plate and only given up 11 walks.
- Freshman Brooke McCubbin has been a solid relief pitcher for the Tigers with six combined shutouts and picked up two saves against Mercer.

YOUNG PROGRAM

- The Clemson softball team has accomplished multiple feats for being a program with just over 100 games.
- Entering this season, the only players with over 100 collegiate games under their belts are transfers that began their careers at other programs. These players include Marissa Guimbarda, Grace Mattimore, Cammy Pereira, Sam Russ and Bailey Taylor.
- Valerie Cagle surpassed the 100-game mark after starting every game in program history for the Tigers. JoJo Hyatt hit the 100-game mark at Georgia, while Alia Logoleo and Arielle Oda surpassed it during the UNC series.
- The remaining 20 players on the 2022 roster have appeared in less than 100 games.
- The Tigers won the ACC Regular Season Title in their first complete season in 2021 after the 2020 inaugural season was cut short due to COVID-19.
- In only their second season, the Tigers also competed in the ACC Championship game and at the Tuscaloosa Regional.

SENIOR CLASS AWARD

- Graduates Marissa Guimbarda and Cammy Pereira have been selected as two of the 30 candidates for the 2022 Softball Senior CLASS Award.
- An acronym for Celebrating Loyalty and Achievement for Staying in School, the Senior CLASS Award focuses on the total student-athlete and encourages students to use their platform in athletics to make a positive impact as leaders in their communities.
- Clemson is one of two programs in the country to have multiple athletes selected as candidates, the other being Washington.
- The 30 candidates will be narrowed to 10 finalists later this season, and those names will be placed on the official ballot for nationwide voting.

ACC PRESEASON HONORS

- The Tigers have been picked to finish second in the ACC
- Clemson pitcher Valerie Cagle and outfielder McKenzie Clark were named to the 2022 Preseason All-ACC Team based on vote by the league's head coaches.
- Cagle returns after being named the ACC Player and Freshman of the Year in 2021. She batted .404 with a .821 slugging percentage and 17 home runs. She also led the Tigers with a 1.16 ERA and 267 strikeouts.
- Clark had a breakout freshman season posting a .355 average and .639 slugging percentage. She stole a team-high 23 bases in 2021 and was an NFCA All-Region Selection.

CLEMSON+

- Clemson Athletics and IPTAY have launched Clemson+, a streaming service dedicated to showing what it's like to be a Tiger.
- Clemson+ showcases the best video content, and is now available on all major streaming platforms, via the Clemson Tigers app and web browser.
- The subscription will be included as an exclusive benefit to more than 26,000 IPTAY and Collegiate Club members.
- Clemson softball will be apart of the initial launch of Clemson+ with a Clemson Softball All-Access feature.
- Get an inside look at the day-to-day aspects of the Clemson softball program and exclusive interviews with the coaching staff and student-athletes. Additional episodes will be added in the coming weeks.

POWER: WOMEN'S LEADERSHIP ACADEMY

- Director of Athletics Graham Neff and Senior Associate AD/Senior Woman Administrator Stephanie Ellison-Johnson announced the formation of the POWER: Women's Leadership Academy in early February.
- The women's leadership academy is a three-pronged women's leadership program with curriculum developed by Assistant AD for Student-Athlete Development Tori Niemann and Dr. Janna Magette Butler, Clemson Athletic Leadership Graduate Program Lecturer.
- The year-long program focuses on identity, professional presence, self-leadership and community, along with an annual experiential trip.
- The leadership summit is an opportunity for POWER participants to design, organize and execute a transformational leadership experience for their Clemson female student-athlete peers.
- Softball has two current student-athletes in Power's inaugural class: Morgan Johnson and Alia Logoleo.

LEGACY - BLACK HISTORY MONTH

- February allowed us to shine a spotlight on the many contributions, successes and challenges of African Americans at Clemson.
- The next iteration will feature student-athletes and staff members talking about an inspirational Black person in their lives.
- Clemson softball's own Morgan Johnson's has penned a letter to Jackie Robinson about his influence and the impact he has had on her career in the sports community.
- Johnson will sit down with ESPN later this month to discuss the impact Jackie Robinson had on her life as we near the 75th anniversary since he broke the color barrier in baseball on April 15.
- Her feature is now live on ClemsonTigers.com. View it on the main page under "My Story."

FALL ACADEMIC SUCCESS

- Clemson University student-athletes earned a 3.19 cumulative GPA in the Fall 2021 semester, the seventh

TIGER TIDBITS

Category	Record
Record	25-10
ACC Record	6-6
Non-Conference Record	19-4
Versus Top 25 (NFCA)	3-10
Versus Top 10 (NFCA)	1-4
Versus Top 5 (NFCA)	--
In February	11-3
In March	11-7
In April	3-0
In May	--
On Monday	1-0
On Tuesday	2-0
On Wednesday	3-1
On Thursday	2-0
On Friday	6-3
On Saturday	7-3
On Sunday	4-3
In Day Games	14-5
In Night Games	11-5
In 1-Run Games	3-2
In 2-Run Games	3-2
In 5+ Run Games	14-3
After a Loss	6-4
After a Win	18-5
In Extra Innings	3-2
Shutouts	14-3
Scoring First	23-4
Scoring in the 1st Innings	12-2
Leading After 4	21-3
Trailing After 4	1-5
Tied After 4	3-2
Leading After 5	12-2
Trailing After 5	1-6
Tied After 5	4-2
Leading After 6	14-1
Trailing After 6	1-7
Tied After 6	1-2
Scoring 5 or More Runs	18-0
Allowing 5 or More	1-4
Out-hit opponent	21-2
Opponent out-hit	2-7
Hits are equal	2-1
Make 0 errors	9-3
Make 1 error	12-4
Make 2+ error	4-3
Opp. makes 0 errors	7-4
Opp. makes 1 error	6-2
Opp. makes 2+ errors	12-4

MEDIA SERVICES

CLEMSON ATHLETIC COMMUNICATIONS

Contact	Valerie Johnson (Central Michigan '18)
Email	vjohns4@clemson.edu
Cell Phone	712-269-4149
Ticket Office Phone	1-800-CLEMSON
Website	ClemsonTigers.com
Social Media	ClemsonSoftball

ACC MEDIA RELATIONS

Justin Wilson is the softball athletic communications contact at the ACC office. He can be reached at 336.369.3713 or at jwilson@acc.org.

CREDENTIALS

Members of the working press who desire a media credential to a Clemson softball home game ClemsonTigers.com/softball under Media Resources. There is limited space for writers inside McWhorter Stadium. Members of the media must request a pass at least 24 hours prior to each game to be considered for admittance.

WEBSITE & SOCIAL MEDIA

Up-to-date stats, notes, stories and box scores can be found on Clemson's official website (ClemsonTigers.com). Live online video, live audio and live stats can be accessed on the ClemsonTigers.com softball schedule page. Fans can also follow ClemsonSoftball on Twitter, Instagram and Facebook.

NOTES

consecutive semester greater than 3.0, and the third-highest ever.

- Clemson softball set a program-record 3.48 GPA in the fall of 2021.
- Clemson's department-wide graduation success rate (GSR) also hit a record of 95 percent in the most recent release.

SEASON TICKETS SOLD OUT

- The Clemson community continues to show its unwavering support to the Clemson softball team through ticket sales.
- Season tickets were sold out prior to the New Year, and IPTAY members and the general public have done their part by snapping up all single-game tickets.
- Tickets for every game during the regular-season at McWhorter sold out prior to opening day.

UPCOMING

- The Tigers will head North to Pittsburgh to take on the Panthers in a three-game series beginning on April 8
- Clemson travels to Columbia, S.C. for the second game of the home-and-home series vs. the Gamecocks before hosting Notre Dame in a three-game series beginning April 14.

ADDITIONAL MEDIA RESOURCES

- More information and a digital version of this set of game notes can be found by scanning the QR Code.



HOME RUNS

#	Player (P)	Opponent (Date)	OB	Inn.	Outs
1.	Pereira (1)	\$ at FGCU (2-10)	0	2	0
2.	Cagle (1)	\$ at FGCU (2-10)	2	5	1
3.	Logoleo (1)	\$ vs. Kent State (2-11)	2	1	2
4.	Cagle (2)	\$ vs. LIU (2-12)	2	6	2
5.	Guimbarda (1)	% vs. No. 18 Tennessee (2-18)	0	3	2
6.	Cagle (3)	% vs. No. 6 Washington (2-20)	0	6	2
7.	Guimbarda (2)	at Charlotte (2-23)	1	4	0
8.	Guimbarda (3)	# Boston University (2-25)	1	2	0
9.	Logoleo (2)	# Boston University (2-25)	1	5	1
10.	Vieira (1)+	# Akron (2-26)	3	1	2
11.	Clark (1)+	# Akron (2-26)	0	3	2
12.	Moore (1)	# Boston University (2-26)	1	3	2
13.	Cagle (4)	Gardner-Webb (3-1)	2	3	0
14.	Guimbarda (4)	Gardner-Webb (3-1)	0	3	0
15.	Cagle (5)	* Virginia Tech (3-6)	0	7	0
16.	Guimbarda (5)	! Illinois (3-13)	2	3	2
17.	Russ (1)	! Liberty (3-13)	0	1	1
18.	Cagle (6)	Winthrop (3-15)	0	1	2
19.	Logoleo (3)	Winthrop (3-15)	2	3	2
20.	Cagle (7)	Winthrop (3-15)	2	4	2
21.	Clark (2)	* at Duke (3-18)	0	6	0
22.	Russ (2)	* at Duke (3-20)	0	7	1
23.	Pereira (2)	at Georgia (3-23)	0	2	2
24.	Logoleo (4)	* Louisville (3-26)	2	2	2
25.	Clark (3)	* Louisville (3-26)	0	3	1
26.	Cagle (8)	* Louisville (3-26)	0	3	1
27.	Clark (4)	* Louisville (3-26)	0	5	0
28.	Cagle (9)	South Carolina (3-30)	2	1	0
29.	Logoleo (5)	South Carolina (3-30)	0	5	2
30.	Clark (5)	South Carolina (3-30)	0	6	1
31.	Logoleo (6)	* North Carolina (4-1)	2	1	2
32.	Vieira (2)	* North Carolina (4-1)	0	4	0
33.	Logoleo (7)	* North Carolina (4-1)	3	7	1
34.	Guimbarda (6)	* North Carolina (4-2)	1	3	0
35.	Moore (2)	* North Carolina (4-2)	0	4	0
36.	Guimbarda (7)	* North Carolina (4-2)	2	4	1
37.	Guimbarda (8)	* North Carolina (4-3)	0	2	0
38.	Logoleo (8)	* North Carolina (4-3)	1	2	0
39.	Vieira (3)	* North Carolina (4-3)	0	2	0
40.	Guimbarda (9)	* North Carolina (4-3)	1	5	2

+ - Grand Slam
++ - Inside the Park Home Run

CLEMSON VS. RANKED TEAMS

2020						
Date	Opponent	CU NFCA, ESPN	Opp. NFCA, ESPN	W-L	Score	
2-26	Georgia	NR	14, 15	W	4-1	
2021						
Date	Opponent	CU NFCA, ESPN	Opp. NFCA, ESPN	W-L	Score	
2-18	* Virginia Tech	RV, N/A	14, 15	W	8-1	
2-19	* Virginia Tech (1)	RV, N/A	14, 15	L (5)	0-9	
2-19	* Virginia Tech (2)	RV, N/A	14, 15	L	1-4	
3-26	* Duke (1)	20, 21	11, 12	L	0-2	
3-26	* Duke (2)	20, 21	11, 12	L	1-3	
3-27	* Duke	20, 21	11, 12	W	4-1	
3-28	* Duke	20, 21	11, 12	W	4-2	
5-14	^ Virginia Tech	13, 10	20, 20	W	2-0	
5-15	^ Duke	13, 10	21, 21	L	0-1	
5-22	! Alabama	13, 10	3, 3	L	0-6	
5-23	! Alabama	13, 10	3, 3	L	0-5	

2022						
Date	Opponent	CU NFCA, ESPN	Opp. NFCA, ESPN	W-L	Score	
2-11	Texas	15, 14	10, 8	L	0-4	
2-18	Tennessee	15, 12	18, 15	W (9)	4-3	
2-19	Northwestern	15, 12	RV, 23	L	0-7	
2-20	Washington	15, 12	6, 5	W	2-0	
3-4	* Virginia Tech	14, 9	6, 6	L	0-6	
3-5	* Virginia Tech	14, 9	6, 6	L	0-4	
3-6	* Virginia Tech	14, 9	6, 6	L	2-4	
3-18	* Duke	17, 15	13, 8	L	2-6	
3-19	* Duke	17, 15	13, 8	W (5)	10-2	
3-20	* Duke	17, 15	13, 8	L	1-7	
3-23	Georgia	16, 15	17, 21	L	2-3	

Bold denotes home game
* - ACC regular-season game; ^ - ACC Championship; ! - Regionals

Total	8-15
Home	4-7
Away	1-5
Neutral	3-3
Non-Conference	3-5
ACC Only	5-10

TEAM SUPERLATIVES

OFFENSE	
At bats	34, at Charlotte (Feb. 23)
Runs scored	12, 2x, at North Carolina (Apr. 3)
Hits	13, 2x, at North Carolina (Apr. 1)
RBI	12, at North Carolina (Apr. 1)
Doubles	6, at Charlotte (Feb. 23)
Triples	2, vs. Texas Tech (Feb. 17)
Home runs	4, 2x, at North Carolina (Apr. 3)
Walks	8, 2x, at North Carolina (Apr. 3)
Strikeouts	13, Virginia Tech (Mar. 6)
Sac flies	1, 3x, Virginia Tech (Mar. 6)
Stolen bases	3, 5 times
Hit by pitch	4, at North Carolina (Apr. 2)
FIELDING	
Putouts	27, vs. Tennessee (Feb. 18)
Assists	14, 2x, Illinois (Mar. 12)
Errors	4, Virginia Tech (Mar. 5)
DPs turned	3, Mercer (Mar. 9)
PITCHING	
Innings pitched	9.0, vs. Tennessee (Feb. 18)
Runs allowed	7, 2x at Duke (Mar. 20)
Earned runs	7, at Duke (Mar. 20)
Walks allowed	6, at Charlotte (Feb. 23)
Strikeouts	13, 2x, Gardner-Webb (Mar. 1)
Hits allowed	11, 2x, Virginia Tech (Mar. 5)

LAST TIME..

OFFENSE	
Hit two HRs in a game	Marissa Guimbarda (at North Carolina, 4/3/22)
Hit three HRs in a game	Alia Logoleo (at Syracuse, 5/9/21)
Hit two HRs in an inning	
Hit grand slam	Alia Logoleo (at North Carolina 4/1/22)
Leadoff HR [inning]	Marissa Guimbarda (at North Carolina 4/3/22)
Walkoff HR	
Walkoff HR [run rule]	Alia Logoleo (Boston U, 2/25/22)
Pinch-hit HR	
Inside the Park HR	McKenzie Clark (Akron, 2/26/22)
HR in back-to-back games	Marissa Guimbarda (at UNC 4/2, at UNC, 4/3/22)
Back-to-back HRs	Alia Logoleo & Aby Vieira (at UNC, 4/3/22)
Two doubles in a game	Marissa Guimbarda (Liberty, 3/13/22)
Three doubles in a game	N/A
Two triples in a game	N/A
Hit for the cycle	N/A
Four hits in a game	McKenzie Clark (Akron 2/26/22)
Drove in five runs	Marissa Guimbarda (at North Carolina, 4/2/22)
Drove in six runs	Valerie Cagle (at FGCU, 2/10/22)
Drove in seven runs	N/A
Drove in eight runs	Alia Logoleo (at North Carolina, 4/1/22)
Drove in 10 runs	Alia Logoleo (at Syracuse, 5/9/21)
Scored four runs	Alia Logoleo (at Syracuse, 5/9/21)
Walkoff hit [non-HR]	Aby Vieira (Louisville, 3/26/22 -- single)
Walkoff [non-hit]	Alia Logoleo (Liberty, 3/14/22 -- error)
Walkoff [pinch hitter]	Kyah Keller (Liberty, 3/13/22 -- single)

PITCHING	
Threw a no-hitter	Valerie Cagle (7.0 IP, Boston College, 4/18/21)
Threw a combined no-hitter	Regan Spencer & Millie Thompson (5.0 IP, vs. Kent State, 2/11/22)
Threw a perfect game	N/A
Threw a solo shutout	Regan Spencer (St. Francis, 2/25/22)
Had 14 strikeouts	Valerie Cagle (Georgia Tech, 5/13/21)
Had 13 strikeouts	Valerie Cagle (vs. Tennessee, 2/18/22)
Had 12 strikeouts	Valerie Cagle (at North Carolina, 4/1/22)
Had 11 strikeouts	Valerie Cagle (South Carolina, 3/30/22)
Had 10 strikeouts	Valerie Cagle (vs. No. 6/5 Washington, 2/20/22)
Pitched >7 innings	Valerie Cagle (8.0 IP, vs. Liberty, 3/13/22)

TEAM	
Won 10 straight games	2021 (19: Mar. 27 - May 8)
Won 15 straight games	2021 (19: Mar. 27 - May 8)
Won 20 straight games	N/A
Extra-Innings victory	3/14/22, No. 17 Clemson 1, Liberty 0 (8 Inn.)
Extra-Innings loss	3/27/22, No. 16 Clemson 2, Louisville 4 (8 Inn.)
Played 11 innings	3/19/21, No. 23 Clemson 4, at Louisville 0
Played 10 innings	N/A
Played nine innings	2/18/22, No. 15 Clemson 4, No. 18 Tennessee 3
Played eight innings	3/27/22, No. 16 Clemson 2, Louisville 4
Was no-hit	N/A
Was shut out	3/6/22, No. 6 Virginia Tech 4, No. 14 Clemson 0
Beat a ranked opponent	3/19/22, No. 17 Clemson 10, No. 13 Duke 2
Beat a top-10 opponent	2/20/22, No. 15 Clemson 2, No. 6 Washington 0
Beat a top-10 ACC opponent	N/A
Run-ruled a ranked opponent	3/19/22, No. 17 Clemson 10, No. 13 Duke 2
Tied an opponent	N/A

PLAYER SUPERLATIVES

OFFENSE	
At bats	5, 2x, McKenzie Clark (vs. Tennessee - Feb. 18)
Runs scored	4, McKenzie Clark (at FGCU - Feb. 10)
Hits	4, McKenzie Clark (Akron - Feb. 26)
RBI	8, Alia Logoleo (at North Carolina - Apr. 1)
Doubles	2, 3x, Marissa Guimbarda (Liberty - Mar. 13)
Triples	1, 7 times
Home runs	2, 5 times
Walks	3, Valerie Cagle (Akron - Feb. 26)
Strikeouts	3, 4 times
Sac flies	1, 3x, Sam Russ (Virginia Tech - Mar. 6)
Stolen bases	2, 4 times
Hit by pitch	2, 3x, Sam Russ (North Carolina - Apr. 2)
FIELDING	
Putouts	13, 2x, Aby Vieira (Louisville - Mar. 27)
Assists	6, 3x, Maddie Moore (South Carolina - Mar. 30)
Errors	2, 2x, Sam Russ (Virginia Tech - Mar. 6)
PITCHING	
Innings pitched	9.0, Valerie Cagle (vs. Tennessee - Feb. 18)
Runs allowed	7, Brooke McCubbin (vs. Northwestern - Feb. 19)
Earned runs	6, 2x, Valerie Cagle (at Duke - Mar. 18)
Walks allowed	3, 7 times
Strikeouts	13, Valerie Cagle (vs. Tennessee - Feb. 18)
Hits allowed	9, 2x, Valerie Cagle (Virginia Tech - Mar. 4)

ROSTER

NUMERICAL

#	Player	Pos.	B/T	Yr.	Ht.	Hometown	Previous School / High School
1	Rachel Gibson	RHP	R-R	Fr.	5-9	Ringgold, Ga.	Heritage HS
2	Brooke McCubbin	RHP/INF	R-R	Fr.	5-10	Locust Grove, Ga.	Locust Grove HS
3	Sam Russ	OF	L-R	+Gr.	5-8	Charlotte, N.C.	NC State / Providence Day HS
4	Aby Vieira	C/UTL	L-R	Fr.	5-9	Mission Viejo, Calif.	Mission Viejo HS
5	Ansley Houston	INF	R-R	So.	5-6	Grantville, Ga.	Newnan HS
6	Carlee Shannon	OF	R-R	**So.	5-7	Chester, S.C.	York Comprehensive HS
7	McKenzie Clark	OF	R-R	So.	5-5	Myakka City, Fla.	Lakewood Ranch HS
8	Grace Hiller	INF/OF	R-R	Fr.	5-9	Macon, Ga.	Tattal Square Academy
9	Sarah Howell	C/UTL	R-R	So.	5-4	Oxford, Ala.	Oxford HS
10	Emma Whitfield	RHP	L-R	*So.	5-9	Concord, Ga.	Stephens County HS
11	Haylee Whitesides	RHP/INF	R-R	Fr.	5-5	Duncan, S.C.	Byrnes HS
12	Cammy Pereira	INF/OF	L-R	**Gr.	5-6	Winston-Salem, N.C.	Furman University / West Forsyth HS
13	Abi Stuart	C/UTL	R-R	*So.	5-9	Snow Camp, N.C.	Southern Alamance HS
15	Madison May	OF/INF	R-R	*So.	5-9	Valdosta, Ga.	Lowndes HS
16	Alia Logoleo	INF/OF	R-R	*So.	5-8	Nashville, Tenn.	Hillsboro HS
17	Regan Spencer	RHP	R-R	So.	5-11	Lexington, N.C.	North Davidson HS
18	Bailey Taylor	INF	R-R	*Gr.	5-7	Winnsboro, S.C.	Troy University / Richard Winn Academy
19	Jaden Cheek	INF/OF	R-R	So.	5-9	Carnesville, Ga.	Franklin County HS
21	Jadeyn Ruszkowski	INF	L-L	Fr.	5-8	Lithia, Fla.	Newsome HS
23	JoJo Hyatt	C	R-R	**So.	5-8	Buford, Ga.	Buford HS
24	Arielle Oda	OF/INF	L-R	**So.	5-4	Buford, Ga.	Buford HS
25	Marissa Guimbarda	UTL	R-R	*Gr.	5-6	Suwanee, Ga.	Furman University / Lambert HS
27	Grace Mattimore	C/UTL	R-R	*Gr.	5-7	Ashburn, Va.	Army West Point / Broad Run HS
28	Maddie Moore	INF	R-R	Fr.	5-7	Loomis, Calif.	Del Oro HS
42	Morgan Johnson	OF	R-R	*So.	6-1	Evans, Ga.	Evans HS
58	Kyah Keller	INF	R-R	*So.	6-0	Hollywood, Ala.	Battle Ground Academy
72	Valerie Cagle	P/UTL	L-R	*So.	5-9	Yorktown, Va.	Homeschooled
77	Hannah Goodwin	INF	R-R	**Fr.	5-8	West Columbia, S.C.	White Knoll HS
87	Millie Thompson	LHP/INF	L-L	So.	5-7	Bedford, Va.	Liberty HS

Head Coach:

John Rittman (3rd season • New Mexico State '86)

Associate Head Coach:

Kyle Jamieson (3rd season • Brock University '97, Nipissing University '98)

Assistant Coach:

Courtney Breault (3rd season • Nebraska '13, Clemson '21)

Volunteer Assistant Coach:

Reese Jacobs (3rd season • Georgia Southern '79, Tennessee '81)

Graduate Assistant Coach:

Alyssa Bilodeau (1st season • Jacksonville '21)

Director of Operations:

Jeannie Murphy (3rd season • Oklahoma '10, Concordia University Irvine '14)

Student Manager:

Amanda Fitzwilliam (2nd season • Clemson '24)

Student Manager:

Anna Johnson (1st season • Clemson '23)

Student Manager:

Olivia Turpin (1st season • Clemson '24)

Associate AD/Sport Supervisor:

Natalie Honnen (3rd season • University of Florida '03 & '05)

Athletic Trainer:

Katie Rovtar (3rd season • University of Toledo '06, Virginia Tech '08)

Strength & Conditioning Coach:

Ryan Metzger (3rd season • University of Wisconsin-Oshkosh '11, University of Kentucky '15)

Athletic Communications Contact:

Valerie Johnson (1st season • Central Michigan '18)

Academic Advisor:

Kayla Velasquez (1st season • Bowling Green '17, Northwestern State '19)

Assistant Director of Equipment:

Ben Miller (3rd season • Clemson '16 & '18)

Supervisor of Athletic Grounds:

Mike Echols (3rd season • Clemson '85)

ALPHABETICAL

#	Player	Pos.	Cl.
72	Valerie Cagle	RHP/UTL	*So.
19	Jaden Cheek	INF/UTL	So.
7	McKenzie Clark	OF	So.
1	Rachel Gibson	RHP	Fr.
77	Hannah Goodwin	INF	*So.
25	Marissa Guimbarda	OF/UTL	*Sr.
8	Grace Hiller	INF/OF	Fr.
5	Ansley Houston	INF	So.
9	Sarah Howell	C/UTL	So.
23	JoJo Hyatt	C	**So.
42	Morgan Johnson	OF	*So.
58	Kyah Keller	INF	*So.
16	Alia Logoleo	OF	*So.
27	Grace Mattimore	C/UTL	*So.
15	Madison May	INF/OF	*So.
2	Brooke McCubbin	RHP/INF	Fr.
28	Maddie Moore	INF	Fr.
24	Arielle Oda	INF/OF	**So.
12	Cammy Pereira	INF/OF	**Sr.
3	Sam Russ	OF	+Gr.
29	Jaden Ruszkowski	INF	Fr.
6	Carlee Shannon	OF	**So.
17	Regan Spencer	RHP	So.
13	Abi Stuart	C/UTL	So.
18	Bailey Taylor	INF	*So.
87	Millie Thompson	LHP/INF	So.
4	Aby Vieira	C/UTL	Fr.
11	Haylee Whitesides	RHP/INF	Fr.
10	Emma Whitfield	RHP	*So.

PRONUNCIATIONS

#	Name	Pronunciation
4	Aby Vieira	vee-AIR-uh
12	Cammy Pereira	puh-RAYR-uh
16	Alia Logoleo	lo-guh-LAY-oh
21	Jadeyn Ruszkowski	russ-COW-ski
24	Arielle Oda	OH-duh
25	Marissa Guimbarda	GUHM-bar-duh
87	Millie Thompson	MILL-ee
	Kyle Jamieson	pronounced like, "Jamison"
	Courtney Breault	BREE-ahlt
	Katie Rovtar	ROHV-tahr

* - one redshirt; + - transfer using extra year of eligibility granted due to Covid-19; Note: "Gr." denotes senior unless otherwise noted.

PRESEASON HONORS

#1 RACHEL GIBSON • RHP • FR.

- One of Top 75 Impact Freshmen by D1Softball.com

#2 BROOKE MCCUBBIN • RHP/INF • FR.

- Softball America ACC Top Newcomer to Watch

#7 MCKENZIE CLARK • OF • SO.

- Preseason All-ACC selection

#25 MARISSA GUIMBARDA • UTL • *GR.

- No. 91 on Extra Innings Softball's Extra Elite 100 List
- No. 82 on Softball America's 2022 Preseason College Top 100 list

#72 VALERIE CAGLE • RHP/UT • *SO.

- Preseason All-ACC selection
- USA Softball Collegiate Player of the Year Top 50 Watch List
- No. 6 on Extra Innings Softball's Extra Elite 100 list
- No. 19 on Softball America's 2022 Preseason College Top 100 list
- Preseason D1Softball.com ACC Player of the Year
- Preseason D1Softball.com First Team All-American
- Preseason Softball America First Team All-American
- D1Softball.com Preseason Top 10 Pitcher Power Rankings

CAREER MILESTONES

Upcoming Milestone	Has	Needs
Marissa Guimbarda 60 home runs	*57	60
Marissa Guimbarda 175 RBIs	*166	9
Cammy Pereira 100 runs	*91	9
Cammy Pereira 25 stolen bases	*22	3
Sam Russ 175 runs	*150	25
Sam Russ 125 stolen bases	*121	4
Valerie Cagle 150 hits	132	18
Valerie Cagle 50 home runs	36	14
McKenzie Clark 100 runs	75	25
McKenzie Clark 50 stolen bases	28	22
Alia Logoleo 75 hits	73	2
Alia Logoleo 50 runs	46	4
JoJo Hyatt 75 hits	51	24
JoJo Hyatt 50 RBIs	27	23
Valerie Cagle 450 Innings Pitched	403.2	56.1
Valerie Cagle 500 strikeouts	478	22
Valerie Cagle 50 wins	47	3
Millie Thompson 150 strikeouts	133	17
Regan Spencer 50 strikeouts	47	3

*Clemson and Previous School Combined

INDIVIDUAL RANKINGS

Player	Category	NCAA/ACC	Value
Sam Russ	Triples	13/1	4
Team	ERA	13/4	1.82
Regan Spencer	ERA	14/2	1.06
Team	SO/W Ratio	21/3	3.93
Valerie Cagle	Shutouts	26/2	4
Valerie Cagle	Saves	27/4	2
Brooke McCubbin	Saves	27/4	2
Millie Thompson	SO/W Ratio	27/3	7.00
Millie Thompson	ERA	29/5	1.38
Sam Russ	Stolen Bases	30/1	18
Sam Russ	Triples Per Game	36/3	0.11
Millie Thompson	Walks/7.0 IP	36/2	1.12
Valerie Cagle	Strikeouts	40/5	124

Player	Category (Career)	Rank (D1)	Value
Sam Russ	Stolen Bases	1	121
Marissa Guimbarda	Home Runs	5	57
Sam Russ	Runs Scored	26	150
Valerie Cagle	Home Runs	44	36

HEAD COACH JOHN RITTMAN



John Rittman, a longtime head coach and member of the USA Softball Women's National Team coaching pool, was named the first Head Coach of Clemson Softball on Nov. 3, 2017. Rittman came to Clemson after serving as the Associate Head Coach at the University of Kansas from 2015-17. Rittman joined the Jayhawks after 18 seasons as the Head Coach at Stanford University and 10 years on the United States National Team coaching staff (2001-08, 2016-18).

During the second season and first complete year, Rittman propelled Clemson to even higher heights by becoming the ACC Regular Season Champions after posting a 29-5 ACC record and winning seven ACC series, including six series sweeps. The Tigers were ACC Tournament Runner-Ups after shutting out both Georgia Tech and then-No. 20 Virginia Tech in the first two rounds before dropping the championship game, 1-0, to then-No. 21 Duke. Rittman was named ACC Coach of the Year and guided Valerie Cagle to being the first student-athlete in league history to be named both the ACC Freshman and Player of the Year in the same season. Clemson finished with six individuals earning nine All-ACC team selections following the regular season, including three on the first team. Cagle and freshman McKenzie Clark were named to the NFCA All-Region team. The honors continued to roll in for Cagle as she became the first Clemson softball All-American garnering second team honors from the NFCA, was a JWOS First Team All-American, a Top-Three Finalist for the NFCA's National Freshman of the Year and a Top-10 Finalist for USA Softball's Collegiate Player of the Year. Behind Rittman's efforts, Clemson climbed as high as No. 13 in the NFCA national rankings and No. 10 in the ESPN/USA Softball rankings before finishing the season at No. 18 in the NFCA poll. Rittman led the Tigers to their first postseason appearance traveling to the Tuscaloosa Regional to defeat Troy twice, including a five-inning run-rule victory in the opening game that capped off a historic second season.

In its inaugural season, Rittman transcended Clemson into a nationally-respected program. Rittman guided Clemson, which was predicted to finish in 10th in the conference, according to the 2020 ACC preseason poll, to a 19-8 overall record, including 5-1 in ACC play. The Tigers, who won both of their ACC series against Virginia and Pitt, won 11 of their final 12 games before the 2020 season was cut short due to the coronavirus pandemic (COVID-19). Additionally, Clemson went 14-2 at Clemson Softball Stadium (now McWhorter Stadium), which included a 13-game home win streak that spanned 25 days. Rittman and the Tigers generated plenty of enthusiasm among the Clemson faithful as the first-year program ranked fourth nationally in attendance (24,860) and fifth in average attendance (1,544/game) in 2020. On March 3, the National Fastpitch Coaches Association (NFCA) announced the first-year program received votes (10) in the fifth edition of the 2020 USA Today/NFCA D1 Top 25 Coaches Poll. The announcement came after Clemson defeated then-No. 14 Georgia, 4-1, on Feb. 26 at Clemson Softball Stadium before sweeping the Cavaliers to win its first-ever ACC series. Under the direction of Rittman, three Tigers in Valerie Cagle (twice), Marissa Guimbarda and Logan Caymol earned

ACC weekly honors on four occasions, the most by any ACC program in 2020. Cagle, a true freshman in 2020, was second in the nation in RBIs (36), while Guimbarda finished the season fourth nationally in home runs (11). Both Cagle and Guimbarda led the ACC in RBIs and home runs, respectively.

At Stanford, Rittman and the Cardinals recorded 18-consecutive winning seasons, made 16-straight NCAA appearances, notched 13 40-win seasons and produced at least one All-American in 15 of his last 17 seasons. As head coach, Rittman accumulated a 750-351-3 overall mark, coached a national player of the year, 16 All-Americans, earned five Super Regional appearances, two Women's College World Series appearances and maintained a spot in every regular-season NFCA top-25 poll for more than a decade.

Rittman served on the staff of the USA Softball team which won gold at both the 2016 Women's Softball World Championship and the 2017 Pan Am Qualifier. He also worked with Team USA from 2001-08, coaching the 2004 Olympic gold medal winners in Athens and the 2008 silver medalists in Beijing. Team USA also won gold medals at the 2002 and 2006 World Championship and the 2003 and 2007 Pan Am Games.

Prior to being named head coach at Stanford, Rittman spent four seasons as an assistant coach at the University of Washington, focusing on hitting and defense. Rittman helped start the program and, within just four seasons, the Huskies had earned a No. 1 national ranking, won the 1996 Pac-10 Championship, made three NCAA Tournament appearances and notched a runner-up finish in their first trip to the Women's College World Series. Washington became the first team since Texas A&M (1983) to advance to the championship game in its first appearance at the WCWS.

Before his appointment at Washington, Rittman spent two seasons as an assistant at the University of Minnesota. During his second year, the Golden Gophers won the Big Ten Conference with a 20-4 league record. The Gophers set team and individual records in almost every offensive category. The Minnesota squad led the nation in hits and total bases en route to a No. 15 national ranking. Rittman also helped produce two Golden Gopher All-Americans.

From 1988-90, Rittman was an assistant coach at the University of Oregon. During his stay, the Ducks played in the 1989 Women's College World Series, set several team and individual offensive records and produced an All-American.

Rittman graduated from New Mexico State with a degree in journalism in 1986. He was a three-year letterwinner in baseball as an outfielder at NMSU after transferring from Yavapai Junior College in Prescott, Arizona.

Rittman and his wife, Lorie, a former softball player at the University of Oklahoma, are the parents of Justin, a UCLA graduate and former fullback for the Bruins, and Jake, a senior punter at Notre Dame.

HEAD COACH JOHN RITTMAN

Education: Bachelor's degree in journalism at New Mexico State (1986).

Playing Experience: Three-year letterman at New Mexico State (1984-86).

Coaching Experience: Assistant Coach at Oregon (1988-90) ... Assistant Coach at Minnesota (1991-92) ... Assistant Coach at Washington (1993-96) ... Head Coach at Stanford (1997-2014) ... Associate Head Coach at Kansas (2015, 2017) ... Head Coach at Clemson (2020-present).

Family: Wife, Lorie Rittman ... sons, Justin and Jake.



RITTMAN'S HEAD COACHING RECORD

Year	School	W-L	NCAA
1997	Stanford	31-27-1	
1998	Stanford	41-18	Regionals
1999	Stanford	40-25	Regionals
2000	Stanford	45-18	Regionals
2001	Stanford	54-16-1	World Series
2002	Stanford	44-20	Regionals
2003	Stanford	41-26	Regionals
2004	Stanford	49-19	World Series
2005*	Stanford	43-16	Super Regionals
2006	Stanford	42-18	Super Regionals
2007	Stanford	35-21-1	Regionals
2008	Stanford	49-15	Super Regionals
2009	Stanford	48-11	Super Regionals
2010	Stanford	37-19	Regionals
2011	Stanford	42-17	Super Regionals
2012	Stanford	40-19	Regionals
2013	Stanford	39-21	Regionals
2014	Stanford	30-25	
2020^	Clemson	19-8	N/A
2021*	Clemson	44-8	Regionals
2022	Clemson	25-10	

* - conference champion; ^ - season suspended March 12 and later canceled due to a coronavirus (COVID-19) pandemic

RITTMAN'S HEAD COACHING RECORD

School	Seasons	Years	W-L	Win %
Stanford	18	1997-2014	750-351-3	.681
Clemson	3	2020-22	88-26	.771
Totals	21	1997-2014, 2020-22	838-377-3	.688

RITTMAN VS. ACC AS CLEMSON HEAD COACH

Team	Overall	Home	Away	Neutral
Boston College	4-0	4-0	0-0	0-0
Duke	3-6	2-2	1-2	0-2
Florida State	0-0	0-0	0-0	0-0
Georgia Tech	4-0	0-0	3-0	1-0
Louisville	6-1	2-1	4-0	0-0
North Carolina	7-0	4-0	3-0	0-0
NC State	4-0	4-0	0-0	0-0
Notre Dame	0-0	0-0	0-0	0-0
Pittsburgh	2-1	2-1	0-0	0-0
Syracuse	3-1	0-0	3-1	0-0
Virginia	7-0	3-0	4-0	0-0
Virginia Tech	2-5	1-5	0-0	1-0
Totals	42-14	22-9	18-3	2-2

Note: Clemson's neutral-site games against Duke (Feb. 7, 2020) was not considered an ACC contest towards the league's standings.

2022 BROADCAST SHEET

1



RACHEL GIBSON

Fr. • RHP • 5-9 • Ringgold, Ga. • Heritage HS

	ERA	W-L	APP	CG	SHO	IP	SO
2022	99.00	0-0	1	0	0/0	0.0	0
Career	99.00	0-0	1	0	0/0	0.0	0

Season Highs: NP (22)

- Made first collegiate appearance against Akron
- D1 Softball Preseason Top 75 Impact Freshmen selection
- Prior to Clemson:
 - Two time GHSA 4A State Champion (2018, 2019)
 - Two time GHSA 4A Pitcher of the Year (2018, 2019)
 - Two time Best of Preps Softball Player of the Year (2018, 2019)
 - 2019 Georgia Dugout Club 4A Player of the Year

2



BROOKE McCUBBIN

Fr. • RHP/INF • 5-10 • Locust Grove, Ga. • Locust Grove HS

	ERA	W-L	APP	CG	SHO	IP	SO
2022	1.72	4-2	15	0	0/6	36.2	21
Career	1.72	4-2	15	0	0/6	36.2	21

Season Highs: IP (5.1), SO (5), NP (110)

- Pitched season-high 5.1 innings vs. Northwestern
- Season-high five strikeouts vs. Winthrop
- Earned first collegiate save vs. Mercer and second at UNC
- Prior to Clemson:
 - 2020 Georgia Softball Player of the Year
 - 2019 GACA State Pitcher of the Year
 - 2019 GADC State 5A Player of the Year

3



SAM RUSS

+Gr. • OF • 5-8 • Charlotte, N.C. • NC State (Providence Day HS)

	AVG	AB	RUNS	HITS	RBI	BB	SB
2022	.293	99	23	29	9	17	18
Career	.315	600	150	189	63	97	121

Season Highs: R (3), RBI (2, 2x), 3B (1, 4x), SB (2, 4x)

- Finished with three hits and two RBIs against LIU
- Had a sac fly and one hit vs. Virginia Tech on March 6
- Has 121 stolen bases to lead the active NCAA D1 players in career stolen bases
- Prior to Clemson:
 - Spent four seasons at NC State
 - Holds NC State's all-time record for career stolen bases (103) and single season record for stolen bases (32)

4



ABY VIEIRA (VEE-AIR-UH)

Fr. • C/UTL • 5-9 • Mission Viejo, Calif. • Mission Viejo HS

	AVG	AB	RUNS	HITS	RBI	BB	SB
2022	.310	42	7	13	9	2	0
Career	.310	42	7	13	9	2	0

Season Highs: H (2, 3x), RBI (4), R (1, 7x), HR (1, 3x)

- Made first appearance behind the plate since VT series in final game vs. Louisville
- Caught Spencer's and Thompson's combined no-hitter vs. Kent State
- Starting catcher in Clemson's upset over Washington
- Recorded first collegiate grand slam (and homer) against Akron
- Hit walk off single against Louisville on March 26 for run-rule victory
- Hit two home runs in series at North Carolina
- Appeared in a total of 19 games this season

5



ANSLEY HOUSTON

So. • INF • 5-6 • Grantville, Ga. • Newnan HS

	AVG	AB	RUNS	HITS	RBI	BB	SB
2022	.000	0	8	0	0	0	1
Career	.000	1	8	0	0	0	1

Season Highs: R (1, 8x), SB (1)

- Has appeared as a pinch runner in 19 games this season
- First collegiate stolen base against Virginia Tech (March 5)
- Scored her first collegiate run against Boston University on Feb. 25
- ACC Academic Honor Roll (2021)
- Prior to Clemson:
 - Set Newnan's home run (12) and RBI (42) single season records in 2019
 - Three time All-Region First Team (2016-18)

6



CARLEE SHANNON

**So. • OF • 5-7 • Chester, S.C. • York Comprehensive HS

	AVG	AB	RUNS	HITS	RBI	BB	SB
2022	.000	0	8	0	0	0	11
Career	.000	0	31	0	0	1	38

Season Highs: R (1, 8x), SB (1, 11x)

- Appeared in 28 games in 2022 as a pinch runner
- Holds the Clemson record for most consecutive stolen bases without being caught (19) - ended in Clearwater, Fla.
- Led the team in stolen-base percentage in 2021 (18-for-18)
- Her 18 stolen bases in 2021 were good for second on the team and tied for 10th in the ACC
- Started playing softball in high school after a career-ending gymnastics injury

7



McKENZIE CLARK

So. • OF • 5-5 • Myakka City, Fla. • Lakewood Ranch HS

	AVG	AB	RUNS	HITS	RBI	BB	SB
2022	.306	108	28	33	16	14	5
Career	.336	277	75	93	45	33	28

Season Highs: R (4), H (4), RBI (2, 4x) 2B (2), SB (1, 5x)

- Scored four runs off two hits with two RBIs at FGCU
- Recorded Clemson's first inside the park home run against Akron
- Went 4-for-4 against Akron with one stolen base
- Hit two home runs in the same game against Louisville (March 26)
- Went 3-for-4 against South Carolina on March 30 with a home run
- 2022 Preseason All-ACC selection
- NFCA All-Region Southeast selection

8



GRACE HILLER

Fr. • INF/OF • 5-9 • Macon, Ga. • Tattal Square Academy

	AVG	AB	RUNS	HITS	RBI	BB	SB
2022	-	-	-	-	-	-	-
Career	-	-	-	-	-	-	-

Season Highs:

- Prior to Clemson:
 - First Team All-7A Region
 - Led her HS in batting average, doubles and runs scored
 - Set HS single season batting average record (.515) in 2020
 - Selected for the Georgia Dugout Club Senior All-State Game

2022 BROADCAST SHEET

9



SARAH HOWELL

So. • C/UTL • 5-4 • Oxford, Ala. • Oxford HS

	AVG	AB	RUNS	HITS	RBI	BB	SB
2022	-	-	-	-	-	-	-
Career	.083	12	5	1	0	0	4

Season Highs:

- Out during 2022 season due to injury
- Appeared in 23 games in 2021
- Scored the Tigers' game-winning run in the Tigers' 5-4 win at Georgia Tech

10



EMMA WHITFIELD

**So.* • RHP • 5-9 • Toccoa, Ga. • Stephens County HS

	ERA	W-L	APP	CG	SHO	IP	SO
2022	7.00	0-0	1	0	0	1.0	1
Career	3.54	4-0	16	1	0	29.2	26

Season Highs: IP (1.0), NP (20)

- Made first appearance of 2022 against Akron
- Appeared in four games in 2021
- Registered a 3.94 ERA in 5.1 innings pitched
- Two time ACC Academic Honor Roll
- Earned the program's first-ever conference win in the circle against Virginia (Feb. 28, 2020)

11



HAYLEE WHITESIDES

Fr. • RHP/INF • 5-5 • Duncan, S.C. • Byrnes HS

	ERA	W-L	APP	CG	SHO	IP	SO
2022	-	-	-	-	-	-	-
Career	-	-	-	-	-	-	-

Season Highs:

- Prior to Clemson:
- Two time South Carolina 5A State Champion (2017, 2021)
- Two time member of the Spartanburg Herald Journal All-Area Team (2018, 2019)

12



CAMMY PEREIRA (PUH-RAYR-UH)

***Gr.* • INF/OF • 5-6 • Winston-Salem, N.C. • Furman (West Forsyth HS)

	AVG	AB	RUNS	HITS	RBI	BB	SB
2022	.300	100	18	30	12	8	0
Career	.304	539	91	164	60	23	22

Season Highs: R (2, 3x), H (3, 4x), HR (1, 2x), 2B (1, 5x), RBI (3)

- Hit Clemson first home run of the 2022 season at FGCU
- Hit a solo home run at Georgia in the second inning
- Tallied three RBIs off two hits vs. Kent State
- Hit two homers against Georgia Tech (May 13, 2021) in the quarterfinals of the ACC Championship in the Tigers' first postseason win in program history
- Has four games with three hits including Charlotte, Boston U, Liberty and Duke
- Is a Weaver-James-Corrigan postgraduate scholarship award recipient (2022)

13



ABI STUART

**So.* • C/UTL • 5-9 • Snow Camp, N.C. • Southern Alamance HS

	AVG	AB	RUNS	HITS	RBI	BB	SB
2022	.000	4	1	0	0	2	0
Career	.243	107	15	26	19	9	0

Season Highs: R (1), BB (1, 2x)

- Has appeared in five games in 2022 (DP in 2, PR in 1, PH 2)
- Scored one run against Kent State and drew a walk at FGCU
- Played in 36 games, starting in 31 in 2021
- Hit .259 in 85 at bats with 10 runs and a .447 slugging percentage
- Posted an eight-game hitting streak, the third longest streak by any Tiger on the season
- Two time ACC Academic Honor Roll recipient

15



MADISON MAY

**So.* • INF/OF • 5-9 • Valdosta, Ga. • Lowndes HS

	AVG	AB	RUNS	HITS	RBI	BB	SB
2022	.227	23	2	5	4	7	0
Career	.161	32	2	5	4	8	0

Season Highs: AB (4), H (2), R (1, 2x), RBI (2), BB (2, 2x)

- Hit a RBI double against Charlotte
- Went 1-for-1 with a double, two RBIs, two walks and one run scored against Texas Tech
- Finished with two hits against Wisconsin
- Recorded first career hit and run against LIU
- Two time ACC Academic Honor Roll recipient
- Reached base on four-straight balls in only plate appearance of the 2021 season

16



ALIA LOGOLEO (LO-GUH-LAY-OH)

**So.* • INF/OF • 5-8 • Nashville, Tenn. • Hillsboro HS

	AVG	AB	RUNS	HITS	RBI	BB	SB
2022	.281	96	17	27	29	7	2
Career	.289	253	48	73	66	22	16

Season Highs: R (2, 3x), H (3, 2x), 2B (2), HR (2), RBI (8)

- Started at either SS or 3B every game this season
- Tallied 11 RBIs in North Carolina series off three homers in three games
- Tallied her fifth home run against South Carolina on March 30
- Hit a walk-off home run against Boston University
- Hit a two-run homer to open scoring against Louisville on March 26
- Hit two grand slams in 2021 (only player to record a grand slam last year)
- Hit a grand slam, a three-run homer, a two-run homer and a double at Syracuse

17



REGAN SPENCER

So. • RHP • 5-11 • Lexington, N.C. • North Davidson HS

	ERA	W-L	APP	CG	SHO	IP	SO
2022	1.06	4-0	13	1	1/4	39.2	27
Career	1.28	10-0	27	3	2/5	82.1	47

Season Highs: IP (7.0), SO (7), NP (84)

- Has four victories in the circle this season
- Allowed first runs of 2022 against Liberty
- Threw Clemson's first combined no-hitter with Millie Thompson vs. Kent State
- Second in the ACC with a 1.06 ERA
- Pitched 3.0 innings with four strikeouts against Kent State to earn the win
- Struck out three batters in 1.2 innings of work against Northwestern
- Earned the victory against Gardner-Webb after pitching 2.0 innings efficiently

2022 BROADCAST SHEET

18



BAILEY TAYLOR

*Gr. • INF • 5-7 • Winnsboro, S.C. • Troy (Richard Winn Academy)

	AVG	AB	RUNS	HITS	RBI	BB	SB
2022	.316	19	0	6	2	2	0
Career	.285	228	26	65	65	23	1

Season Highs: H (2), HPB (2), RBI (1, 2x), BB (2)

- Has started in nine games this season and appeared in 17
- Had two hits vs. Liberty on March 13
- Tallied an RBI vs. Illinois and Liberty at the Tiger Invitational
- Missed 2021 season due to injury
- Recorded a grand slam against Maryland helping Clemson become just the seventh program in NCAA Division I history to record two grand slams in a single inning

19



JADEN CHEEK

So. • INF/UTL • 5-9 • Carnesville, Ga. • Franklin County HS

	AVG	AB	RUNS	HITS	RBI	BB	SB
2022	-	-	1	-	-	-	-
Career	.100	10	12	1	0	0	2

Season Highs: R (1)

- Has appeared in three games in 2022 as a pinch runner
- Scored first run of 2022 at North Carolina
- Appeared in 39 games in 2021
- Made first career start as the Tigers' designated player against Furman
- Recorded first career hit on a single to right field against Furman

21



JADEYN RUSZKOWSKI (RUSS-COW-SKI)

Fr. • INF • 5-8 • Lithia, Fla. • Newsome HS

	AVG	AB	RUNS	HITS	RBI	BB	SB
2022	-	-	-	-	-	-	-
Career	-	-	-	-	-	-	-

Season Highs:

- Prior to Clemson:
- Two time District Champion
- Member of the 9A First Team All-State as a designated player
- Had a batting average of .652 as a junior in HS

23



JOJO HYATT

**So. • C • 5-8 • Buford, Ga. • Buford HS

	AVG	AB	RUNS	HITS	RBI	BB	SB
2022	.218	55	1	12	6	5	0
Career	.242	211	16	51	27	18	0

Season Highs: H (2, 2x), 3B (1), RBI (3), BB (1, 5x) PO (13)

- Has appeared in 25 games this season
- Hit the walk-off triple to run-rule Texas Tech to open the SPCEI with three RBIs
- Brought in two runners in Clemson's 4-3 win over Tennessee
- Started 50 games at catcher in 2021
- Hit .223 with four runs, a .266 slugging percentage and .291 on-base percentage
- Hit first career home run at Virginia (Mar. 7, 2021)
- Two time ACC Academic Honor Roll recipient

24



ARIELLE ODA (OH-DUH)

**So. • INF/OF • 5-4 • Buford, Ga. • Buford HS

	AVG	AB	RUNS	HITS	RBI	BB	SB
2022	.312	16	8	5	0	3	3
Career	.222	36	30	8	4	10	8

Season Highs: R (1, 8x), AB (3), H (1, 5x), SB (1, 3x)

- Made a catch at the wall in right field and hit a single vs. Virginia Tech (3/6)
- Has appeared in 31 games this season
- Appeared in 46 games, including 14 starts in 2021
- Hit .143 with 10 runs scored last season
- Two time ACC Academic Honor Roll member
- Scored one of four runs in the sixth inning in the Tigers' 5-3 comeback win at Virginia (Mar. 6, 2021)

25



MARISSA GUIMBARDA (GUHM-BAR-DUH)

*Gr. • OF/UTL • 5-6 • Suwanee, Ga. • Furman (Lambert HS)

	AVG	AB	RUNS	HITS	RBI	BB	SB
2022	.313	99	14	31	29	16	1
Career	.311	541	82	168	166	80	3

Season Highs: R (2, 4x), H (3, 2x), RBI (5), BB (2, 4x)

- Recorded the hit that scored the first run in Clemson's win over Washington
- Hit her 57th career home run to become the 196th player in D1 history to accomplish surpassing 50 HR in her career and sits fifth on the NCAA career home run list for active players
- Is a Weaver-James-Corrigan postgraduate scholarship award recipient (2021)
- No. 91 preseason player by Extra Innings Softball and No. 86 by Softball America
- Senior CLASS Award top-30 selection

27



GRACE MATTIMORE

*Gr. • C/UTL • 5-7 • Ashburn, Va. • Army West Point (Broad Run HS)

	AVG	AB	RUNS	HITS	RBI	BB	SB
2022	.167	6	1	1	0	1	0
Career	.274	259	41	71	44	57	1

Season Highs: AB (2), 2B (1), R (1), BB (1)

- Recorded a double and scored vs. Virginia Tech on March 6
- Had sac bunt to spur Clemson's eight-run inning at Duke on March 19
- Drew a walk as a pinch hitter vs. Mercer
- Played left field and had two at bats vs. Gardner-Webb
- Started in 40 games in 2021
- Is a Weaver-James-Corrigan postgraduate scholarship award recipient
- Hit .333 in 66 at bats in 2020 and led the ACC with 10 doubles

28



MADDIE MOORE

Fr. • INF • 5-7 • Loomis, Calif. • Del Oro HS

	AVG	AB	RUNS	HITS	RBI	BB	SB
2022	.200	55	15	11	5	9	4
Career	.200	55	15	11	5	9	4

Season Highs: R (2, 2x), H (1, 11x), BB (2), SB (1, 4x)

- Has started in 34 games this season
- Recorded a hit and a run at FGCU on opening day
- Tallied a RBI single against South Carolina on March 30
- Scored the winning run for Clemson vs. Tennessee and the first run for Clemson against Washington
- Hit first career home run against Boston University on 2/26 and second at North Carolina on 4/2

2022 BROADCAST SHEET

42



MORGAN JOHNSON

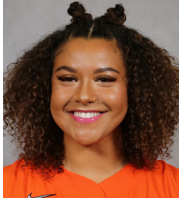
*So. • OF • 6-1 • Evans, Ga. • Evans HS

	AVG	AB	RUNS	HITS	RBI	BB	SB
2022	-	-	-	-	-	-	-
Career	.288	52	9	15	18	8	4

Season Highs:

- Out during 2022 season due to injury
- Read her "My Story" feature on ClemsonTigers.com - Johnson penned a letter to Jackie Robinson for Black History Month - will be feature on Sportscenter in April
- Appeared in 30 games in 2021 and hit .350 in 40 at bats with a .725 slugging percentage
- Two time ACC Academic Honor Roll recipient
- Member of Clemson's POWER - a Women's Leadership Academy

58



KYAH KELLER

*So. • INF • 6-0 • Hollywood, Ala. • Battle Ground Academy

	AVG	AB	RUNS	HITS	RBI	BB	SB
2022	.217	46	1	10	9	4	0
Career	.237	139	8	33	26	10	0

Season Highs: H (2), RBI (2, 2x), BB (1, 4x)

- Pinch hit a RBI single against LIU to spur Clemson's eight-inning scoring run in the sixth
- Had a walk off pinch hit single vs. Liberty to bring in two runners
- Hit .256 in 90 at bats with six runs and a .367 slugging percentage in 2021
- Recorded two homers in CU's 12-1 win against North Carolina while going 3-for-3 with a career-best four RBI
- Two time ACC Academic Honor Roll member

72



VALERIE CAGLE

*So. • RHP/UTL • 5-9 • Yorktown, Va. • Homeschooled

	AVG	AB	RUNS	HITS	RBI	BB	SB
2022	.304	112	23	34	30	11	0
Career	.361	361	92	132	111	44	5

Season Highs: H (3, 2x), R (2, 5x), RBI (6), HR (2), HBP (1)

	ERA	W-L	APP	CG	SHO	IP	SO
2022	2.23	10-7	20	9	4/3	97.1	124
Career	1.65	47-20	79	43	15/5	403.2	478

Season Highs: IP (9.0), H (9), SO (13), BB (3, 4x)

- Tallied three hits and six RBIs at FGCU - including her first homer of the season
- Struck out 10 batters and hit a solo home run in Clemson's 2-0 upset over Washington
- Hit two home runs vs. Winthrop with four RBIs
- Has recorded 34 hits, nine home runs and holds a .729 slugging percentage
- Has pitched 97.1 innings with 124 strikeouts
- Preseason All-ACC selection and D1 Softball Preseason First Team All-American
- Pitched two complete-game no-hitters in 2021 in 6-0 win against Boston College and 9-0 win against Winthrop
- Joined Team USA's U-18 Junior Women's National Team

77



HANNAH GOODWIN

**Fr. • INF • 5-8 • West Columbia, S.C. • White Knoll HS

	AVG	AB	RUNS	HITS	RBI	BB	SB
2022	.000	5	0	0	0	0	0
Career	.341	87	15	30	16	5	1

Season Highs: AB (2)

- Made first appearance in 2022 as a pinch hitter vs. Charlotte
- Had one plate appearance against Gardner-Webb and Mercer
- Made first start in 2022 against UNC
- Missed 2021 season due to injury
- ACC Academic Honor Roll selection
- Started 26 games at shortstop in 2020
- Led the 2020 team with a .385 average during the shortened COVID season

87



MILLIE THOMPSON (MILL-EE)

So. • LHP/INF • 5-9 • Bedford, Va. • Liberty HS

	ERA	W-L	APP	CG	SHO	IP	SO
2022	1.38	7-1	14	4	2/5	56	63
Career	1.77	16-2	33	7	2/7	134.2	133

Season Highs: IP (7.0, 3x), H (7, 2x), SO (11), NP (103)

- Started and earned her first victory of the 2022 season against Charlotte
- Struck out eight batters without giving up a walk in Clemson's 10-2 run-rule victory over Duke and struck out nine against Louisville the next week
- Threw Clemson's first combined no-hitter with Regan Spencer vs. Kent State
- Struck out a career-high 11 batters vs. Illinois
- Underwent successful surgery in December to correct a left forearm compartment syndrome injury

QUICK FACTS

Nickname	Tigers
Location	Clemson, S.C. 29633
Colors	Clemson Orange & Regalia
Founded	1889
Enrollment	27,341
President	Dr. James P. Clements (Maryland-Baltimore County '85)
Director of Athletics	Graham Neff (Georgia Tech '06)
Conference	Atlantic Coast Conference
Facility (Capacity)	McWhorter Stadium (1,616)
Year Opened	2020
Dimensions	LF - 200, CF - 220, RF - 205
Record Crowd	1,616
Head Coach	John Rittman (New Mexico State '86)
Record at Clemson	88-26 (3 rd season)
Overall Record	838-377-3 (21 st season)
Associate Head Coach	Kyle Jamieson (Brock '97 & Nipissing '98)
Assistant Coach	Courtney Breault (Nebraska '13, Clemson '21)
Volunteer Assistant Coach	Reese Jacobs (Georgia Southern '79)
Director of Operations	Jeannie Murphy (Oklahoma '10, Concordia '14)
Graduate Assistant	Alyssa Bilodeau (Jacksonville '21)
Athletic Trainer	Katie Rovtar (Toledo '06 & Virginia Tech '08)
Strength Coach	Ryan Metzger (Wisconsin-Oshkosh '11 & Kentucky '15)
Sport Administrator	Natalie G. Honnen (Florida '03 & '05)
First Year of Softball	2020
Season of Softball	Third

ACC STANDINGS

SCHOOL	CONF	CPCT.	OVERALL	PCT.	STREAK
Virginia Tech	11-0	1.000	27-4	.871	L1
Duke	11-2	.846	28-5	.848	W5
Florida State	10-2	.833	35-2	.946	W9
Notre Dame	7-3	.700	27-7	.794	W2
Virginia	8-4	.667	21-16	.568	L4
Clemson	6-6	.500	25-10	.714	W4
Georgia Tech	6-9	.400	25-11	.694	L2
NC State	5-10	.333	25-13	.658	W1
North Carolina	4-8	.333	19-17	.528	L3
Louisville	3-6	.333	19-15	.559	L1
Syracuse	3-8	.273	19-12	.613	W2
Boston College	2-10	.167	14-17	.452	L6
Pitt	1-9	.100	12-16	.429	L2

2022 TV ROSTER



1
RACHEL GIBSON
Fr. - RHP



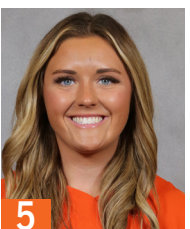
2
BROOKE McCUBBIN
Fr. - RHP/INF



3
SAM RUSS
+Gr. - OF



4
ABY VIEIRA
Fr. - C/UTL



5
ANSLEY HOUSTON
So. - INF



6
CARLEE SHANNON
**So. - OF



7
MCKENZIE CLARK
So. - OF



8
GRACE HILLER
Fr. - INF/OF



9
SARAH HOWELL
So. - C/UTL



10
EMMA WHITFIELD
*So. - RHP



11
HAYLEE WHITESIDES
Fr. - RHP/INF



12
CAMMY PEREIRA
**Gr. - INF/OF



13
ABI STUART
*So. - C/UTL



15
MADISON MAY
*So. - OF/INF



16
ALIA LOGOLEO
*So. - OF/INF



17
REGAN SPENCER
So. - RHP



18
BAILEY TAYLOR
*Gr. - INF



19
JADEN CHEEK
So. - INF/OF



21
JADEYN RUSZKOWSKI
Fr. - INF



23
JoJo HYATT
**So. - C



24
ARIELLE ODA
**So. - OF/INF



25
MARISSA GUIMBARDA
*Gr. - UTL



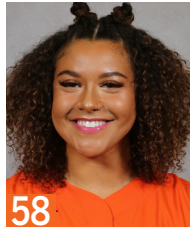
27
GRACE MATTIMORE
*Gr. - C/UTL



28
MADDIE MOORE
Fr. - INF



42
MORGAN JOHNSON
*So. - OF



58
KYAH KELLER
*So. - INF



72
VALERIE CAGLE
*So. - RHP/UTL



77
HANNAH GOODWIN
**Fr. - INF



87
MILLIE THOMPSON
So. - LHP



HC
JOHN RITTMAN
3rd Season



AC
KYLE JAMIESON
3rd Season



AC
COURTNEY BREAUT
3rd Season



VC
REESE JACOBS
3rd Season



GA
ALYSSA BIODEAU
1st Season



DO
JEANNIE MURPHY
3rd Season

PLAYER HIGHS

#1 RACHEL GIBSON

Career (Last)	Category	2022
Same	IP	
Same	Runs Allowed	4 (Akron 2/26)
	Earned Runs	3 (Akron 2/26)
	Walks Issued	
	Strikeouts	
Same	Hits Allowed	1 (Akron 2/26)
	Doubles Allowed	
	Triples Allowed	
	Homers Allowed	

#2 BROOKE McCUBBIN

Career (Last)	Category	2022
Same	IP	5.1 (vs Northwestern 2/19)
Same	Runs Allowed	7 (vs Northwestern 2/19)
Same	Earned Runs	5 (at Duke 3/20)
Same	Walks Issued	2, 4x (at Duke 3/20)
Same	Strikeouts	5 (Winthrop 3/15)
Same	Hits Allowed	9 (vs Northwestern 2/19)
Same	Doubles Allowed	1, 4x (at Duke 3/20)
Same	Triples Allowed	
Same	Homers Allowed	1 (vs Northwestern 2/19)

#3 SAM RUSS

Career (Last)	Category	2022
Same	Runs	3 (at North Carolina 4/1)
Same	Hits	3 (vs LIU 2/12)
Same	RBI	2, 2x (at Duke 3/19)
Same	Doubles	1, 4x (at North Carolina 4/1)
Same	Triples	1, 4x (at Duke 3/19)
Same	Home Runs	1, 2x (at Duke 3/20)
Same	Walks	2, 4x (at North Carolina 4/3)
Same	HBP	2 (at North Carolina 4/2)
Same	Stolen Bases	2, 4x (Liberty 3/14)

#4 ABY VIEIRA

Career (Last)	Category	2022
Same	Runs	1, 7x (at North Carolina 4/3)
Same	Hits	2, 3x (at North Carolina 4/3)
Same	RBI	4 (Akron 2/26)
Same	Doubles	1 (at Charlotte 2/23)
	Triples	
	Home Runs	1, 3x (at North Carolina 4/3)
Same	Walks	1, 2x (Akron 2/26)
	HBP	
	Stolen Bases	

#5 ANSLEY HOUSTON

Career (Last)	Category	2022
Same	Runs	1, 8x (South Carolina 3/30)
-	Hits	
-	RBI	
-	Doubles	
-	Triples	
-	Home Runs	
-	Walks	
-	HBP	
Same	Stolen Bases	1 (Virginia Tech 3/5)

#6 CARLEE SHANNON

Career (Last)	Category	2022
1, 31x (Louisville 3/26/22)	Runs	1, 8x (Louisville 3/26)
-	Hits	
-	RBI	
-	Doubles	
-	Triples	
-	Home Runs	
-	Walks	
-	HBP	
2 (Winthrop 4/13/21)	Stolen Bases	1, 11x (South Carolina 3/30)

#7 McKENZIE CLARK

Career (Last)	Category	2022
4 (at FGCU 2/10)	Runs	4 (at FGCU 2/10)
4 (Akron 2/26/22)	Hits	4 (Akron 2/26)
3, 2x (North Carolina 4/3/21)	RBI	2, 4x (Louisville 3/26)
2, 3x (Mercer 3/9/22)	Doubles	2 (Mercer 3/9)
1, 8x (Virginia Tech 3/5/22)	Triples	1, 2x (Virginia Tech 3/5)
2 (Louisville 3/26/22)	Home Runs	2 (Louisville 3/26)
2, 5x (at North Carolina 4/3/22)	Walks	2, 3x (at North Carolina 4/3)
1, 9x (at Georgia 3/23/22)	HBP	1, 4x (at Georgia 3/23)
3 (Eaton 2/27/21)	Stolen Bases	1, 5x (Louisville 3/25)

#8 GRACE HILLER

Career (Last)	Category	2022
	Runs	
	Hits	
	RBI	
	Doubles	
	Triples	
	Home Runs	
	Walks	
	HBP	
	Stolen Bases	

#9 SARAH HOWELL

Career (Last)	Category	2022
1, 5x (North Carolina 4/3/21)	Runs	
1 (at North Florida 2/12/21)	Hits	
-	RBI	
-	Doubles	
-	Triples	
-	Home Runs	
-	Walks	
-	HBP	
2 (at Virginia 3/7/21)	Stolen Bases	

#10 EMMA WHITFIELD

Career (Last)	Category	2022
5.0 (Charlotte 3/4/20)	IP	1.0 (Akron 2/26)
3 (vs St. John's 2/9/20)	Runs Allowed	1 (Akron 2/26)
3 (vs St. John's 2/9/20)	Earned Runs	1 (Akron 2/26)
3 (Pittsburgh 3/7/20)	Walks Issued	
3, 4x (Furman 3/13/21)	Strikeouts	1 (Akron 2/26)
5 (Charlotte 3/4/20)	Hits Allowed	2 (Akron 2/26)
2 (Maryland 2/15/20)	Doubles Allowed	
1 (Akron 2/26/22)	Triples Allowed	1 (Akron 2/26)
1, 5x (Winthrop 4/13/21)	Homers Allowed	

#11 HAYLEE WHITESIDES

Career (Last)	Category	2022
	IP	
	Runs Allowed	
	Earned Runs	
	Walks Issued	
	Strikeouts	
	Hits Allowed	
	Doubles Allowed	
	Triples Allowed	
	Homers Allowed	

#12 CAMMY PEREIRA

Career (Last)	Category	2022
3 (Maryland 2/15/20)	Runs	2, 3x (at North Carolina 4/3)
3, 10x (at Duke 3/19/22)	Hits	3, 3x (at Duke 3/19)
3, 2x (vs Kent State 2/11/22)	RBI	3 (vs Kent State 2/11)
1, 11x (Boston U 2/25/22)	Doubles	1, 5x (at North Carolina 4/3)
1, 2x (North Carolina 4/2/21)	Triples	
2 (vs Georgia Tech 5/13/21)	Home Runs	1, 2x (at Georgia 3/23)
2 (Boston College 4/17/21)	Walks	1, 8x (at North Carolina 4/3)
2, 2x (at North Carolina 4/2/22)	HBP	2 (at North Carolina 4/2)
1, 9x (vs Troy 5/21/21)	Stolen Bases	

#13 ABI STUART

Career (Last)	Category	2022
3 (vs St. John's 2/9/20)	Runs	1 (vs Kent State 2/11)
2, 6x (Boston College 4/16/21)	Hits	
3, 3x (Winthrop 4/13/21)	RBI	
2 (Furman 3/12/21)	Doubles	
-	Triples	
1, 5x (North Carolina 4/2/21)	Home Runs	
2 (Western Carolina 2/12/20)	Walks	1, 2x (Liberty 3/14)
1, 2x (Boston College 4/17/21)	HBP	
-	Stolen Bases	

#15 MADSION MAY

Career (Last)	Category	2022
Same	Runs	1, 2x (vs Texas Tech 2/17)
Same	Hits	2 (vs Wisconsin 2/19)
Same	RBI	2 (vs Texas Tech 2/17)
Same	Doubles	1, 2x (at Charlotte 2/23)
-	Triples	
-	Home Runs	
Same	Walks	2, 2x (vs Tennessee 2/18)
Same	HBP	1 (vs Tennessee 2/18)
-	Stolen Bases	

PLAYER HIGHS

#16 ALIA LOGOLEO

CAREER (LAST)	CATEGORY	2022
4 (at Syracuse 5/9/21)	Runs	2, 3x (at North Carolina 4/1)
4 (at Syracuse 5/9/21)	Hits	3, 2x (at North Carolina 4/1)
10 (at Syracuse 5/9/21)	RBI	8 (at North Carolina 4/1)
2, 2x (at Charlotte 2/23/22)	Doubles	2 (at Charlotte 2/23)
1, 2x (Morgan State 2/23/20)	Triples	
3 (at Syracuse 5/9/21)	Home Runs	2 (at North Carolina 4/1)
2, 2x (at North Carolina 4/2/22)	Walks	2 (at North Carolina 4/2)
1, 8x (at North Carolina 4/3/22)	HBP	1, 3x (at North Carolina 4/3)
2 (vs Virginia Tech 5/14/21)	Stolen Bases	1, 2x (Louisville 3/27)

#17 REGAN SPENCER

CAREER (LAST)	CATEGORY	2022
7.0, 2x (St. Francis 2/25/22)	IP	7.0 (St. Francis 2/25)
4 (at North Carolina 4/3/22)	Runs Allowed	4 (at North Carolina 4/3)
3 (Boston College 4/17/21)	Earned Runs	2, 3x (at North Carolina 4/3)
3, 3x (Liberty 3/13/22)	Walks Issued	3 (Liberty 3/13)
8 (at Louisville 3/20/21)	Strikeouts	7 (Louisville 3/27)
7 (at Georgia Tech 2/21/21)	Hits Allowed	5 (St. Francis 2/25)
2, 2x (at North Carolina 4/3/22)	Doubles Allowed	2 (at North Carolina 4/3)
-	Triples Allowed	
1, 4x (Liberty 3/13/22)	Homers Allowed	1 (Liberty 3/13)

#18 BAILEY TAYLOR

CAREER (LAST)	CATEGORY	2022
3, 2x (Virginia 3/1/20)	Runs	
2, 5x (Liberty 3/13/22)	Hits	2 (Liberty 3/13)
4 (Maryland 2/15/20)	RBI	1, 2x (Liberty 3/13)
1, 2x (Virginia 2/28/20)	Doubles	
-	Triples	
1, 2x (Pittsburgh 3/6/20)	Home Runs	
2, 2x (at North Carolina 4/2/22)	Walks	2 (at North Carolina 4/2)
Same	HBP	2 (vs Kent State 2/11)
-	Stolen Bases	

#19 JADEN CHEEK

CAREER (LAST)	CATEGORY	2022
1, 2x (at North Carolina 4/3/22)	Runs	1 (at North Carolina 4/3)
1 (Furman 3/23/21)	Hits	
-	RBI	
-	Doubles	
-	Triples	
-	Home Runs	
-	Walks	
-	HBP	
1, 2x (NC State 4/23/21)	Stolen Bases	

#21 JADEYN RUSZKOWSKI

CAREER (LAST)	CATEGORY	2022
	Runs	
	Hits	
	RBI	
	Doubles	
	Triples	
	Home Runs	
	Walks	
	HBP	
	Stolen Bases	

#23 JoJo HYATT

CAREER (LAST)	CATEGORY	2022
3 (Maryland 2/15/20)	Runs	1 (Mercer 3/9)
3 (at Syracuse 5/9/21)	Hits	2, 2x (at Duke 3/18)
3 (vs Texas Tech 2/17/22)	RBI	3 (vs Texas Tech 2/17)
1, 3x (at Syracuse 5/8/21)	Doubles	
1, 2x (vs Texas Tech 2/17/22)	Triples	1 (vs Texas Tech 2/17)
1 (at Virginia 3/7/21)	Home Runs	
2, 2x (Boston College 4/17/21)	Walks	1, 5x (at Duke 3/20)
1, 4x (at Duke 3/19/22)	HBP	1 (at Duke 3/19)
-	Stolen Bases	

#24 ARIELLE ODA

CAREER (LAST)	CATEGORY	2022
2, 2x (Charlotte 3/4/20)	Runs	1, 8x (at North Carolina 4/1)
1, 7x (at North Carolina 4/1/22)	Hits	1, 5x (at North Carolina 4/1)
2 (Charlotte 3/4/20)	RBI	
1 (Boston U 2/25/22)	Doubles	1 (Boston U 2/25)
1 (Charlotte 3/4/20)	Triples	
-	Home Runs	
1, 10x (at North Carolina 4/2/22)	Walks	1, 3x (at North Carolina 4/2)
1, 3x (Gardner-Webb 3/1/22)	HBP	1 (Boston U 2/25)
1, 3x (Louisville 3/27/22)	Stolen Bases	1, 3x (South Carolina 3/30)

#25 MARISSA GUIMBARDA

CAREER (LAST)	CATEGORY	2022
2, 9x (at North Carolina 4/3/22)	Runs	2, 4x (at North Carolina 4/3)
3, 5x (at North Carolina 4/3/22)	Hits	3 (at North Carolina 4/3)
5, 2x (at North Carolina 4/2/22)	RBI	5 (at North Carolina 4/2)
2, 2x (Liberty 3/13/22)	Doubles	2 (Liberty 3/13)
1 (Morgan State 2/23/20)	Triples	
2, 3x (at North Carolina 4/3/22)	Home Runs	2, 2x (at North Carolina 4/3)
3 (Virginia 2/28/20)	Walks	2, 4x (at Georgia 3/23)
3 (at Georgia Tech 2/21/21)	HBP	1, 3x (at Duke 3/18)
1, 2x (at Duke 3/18/22)	Stolen Bases	1 (at Duke 3/18)

#27 GRACE MATTIMORE

CAREER (LAST)	CATEGORY	2022
2, 4x (North Carolina 4/2/21)	Runs	1 (Virginia Tech 3/6)
2, 9x (North Carolina 4/2/21)	Hits	1 (Virginia Tech 3/6)
4 (vs St. John's 2/9/20)	RBI	
2 (Charlotte 3/4/20)	Doubles	1 (Virginia Tech 3/6)
-	Triples	
1 (North Carolina 4/2/21)	Home Runs	
3, 2x (at Syracuse 5/8/21)	Walks	1 (Mercer 3/9)
2 (vs Illinois State 2/12/21)	HBP	
1 (vs Illinois State 2/12/21)	Stolen Bases	

#28 MADDIE MOORE

CAREER (LAST)	CATEGORY	2022
Same	Runs	2, 2x (at North Carolina 4/3)
Same	Hits	1, 11x (at North Carolina 4/3)
Same	RBI	2 (Boston U 2/26)
Same	Doubles	1, 3x (Louisville 3/25)
-	Triples	
Same	Home Runs	1, 2x (at North Carolina 4/2)
Same	Walks	2 (at North Carolina 4/3)
Same	HBP	1 (at North Carolina 4/1)
Same	Stolen Bases	1, 4x (at North Carolina 4/3)

#58 KYAH KELLER

CAREER (LAST)	CATEGORY	2022
3 (North Carolina 4/2/21)	Runs	1 (Mercer 3/9)
3 (North Carolina 4/2/21)	Hits	2 (at Duke 3/19)
4 (North Carolina 4/2/21)	RBI	2, 2x (Louisville 3/26)
1, 3x (Mercer 3/9/22)	Doubles	1 (Mercer 3/9)
1 (NC State 4/23/21)	Triples	
2 (North Carolina 4/2/21)	Home Runs	
1, 10x (Louisville 3/25/22)	Walks	1, 4x (Louisville 3/25)
1, 4x (South Carolina 3/30/22)	HBP	1, 2x (South Carolina 3/30)
-	Stolen Bases	

#72 VALERIE CAGLE

CAREER (LAST)	CATEGORY	2022
3, 3x (vs Troy 5/21/21)	Runs	2, 5x (at North Carolina 4/2)
4, 2x (Virginia 2/28/20)	Hits	3, 2x (at Charlotte 2/23)
8 (Maryland 2/15/20)	RBI	6 (at FGCU 2/10)
2 (Furman 3/13/21)	Doubles	1, 4x (at North Carolina 4/3)
1 (Duke 3/28/21)	Triples	
2, 7x (Winthrop 3/15/22)	Home Runs	2 (Winthrop 3/15)
3, 2x (Akron 2/26)	Walks	3 (Akron 2/26)
1 (vs Kent State 2/11)	HBP	1 (vs Kent State 2/11)
1, 5x (Winthrop 4/13/21)	Stolen Bases	
11.0 (at Louisville 3/19/21)	IP	9.0 (vs Tennessee 2/18)
10 (vs Duke 2/7/20)	Runs Allowed	6, 2x (at Duke 3/18)
10 (vs Duke 2/7/20)	Earned Runs	6, 2x (at Duke 3/18)
6 (vs Georgia Tech 5/13/21)	Walks Issued	3, 4x (Louisville 3/26)
14, 3x (vs Georgia Tech 5/13/21)	Strikeouts	13 (vs Tennessee 2/18)
10 (vs Duke 2/7/20)	Hits Allowed	9 (Virginia Tech 3/4)
3 (Virginia 2/28/20)	Doubles Allowed	1, 5x (at North Carolina 4/1)
1, 3x (vs Tennessee 2/18/22)	Triples Allowed	1 (vs Tennessee 2/18)
2, 2x (vs Tennessee 2/18/22)	Homers Allowed	2, 2x (at Duke 3/18)

#77 HANNAH GOODWIN

CAREER (LAST)	CATEGORY	2022
2, 3x (Pittsburgh 3/6/20)	Runs	
3, 2x (vs Stetson 2/22/20)	Hits	
4 (vs St. John's 2/7/20)	RBI	
1, 5x (Pittsburgh 3/6/20)	Doubles	
-	Triples	
1, 4x (Pres. College 3/10/20)	Home Runs	
2 (Michigan State 2/16/20)	Walks	
1, 4x (Georgia 2/26/20)	HBP	
1 (at UNCG 2/18/20)	Stolen Bases	

#87 MILLIE THOMPSON

CAREER (LAST)	CATEGORY	2022
7.0, 5x (at North Carolina 4/2/22)	IP	7.0, 3x (at North Carolina 4/2)
3, 5x (Virginia Tech 3/5/22)	Runs Allowed	3 (Virginia Tech 3/5)
3, 2x (NC State 4/23/21)	Earned Runs	2, 5x (Louisville 3/25)
3, 3x (vs. Troy 5/22/21)	Walks Issued	3 (at Charlotte 2/23)
11 (Illinois 3/13/22)	Strikeouts	11 (Illinois 3/13)
8, 3x (NC State 4/23/21)	Hits Allowed	7, 2x (Virginia Tech 3/5)
2, 5x (at Duke 3/19/22)	Doubles Allowed	2 (at Duke 3/19)
-	Triples Allowed	
1, 9x (Louisville 3/25/22)	Homers Allowed	1, 4x (Louisville 3/25)