



GAME NOTES

CLEMSON SOFTBALL

#TEAM3

GAME 38-40: CLEMSON AT PITT

FRIDAY, APRIL 8 - SUNDAY, APRIL 10

VATABEDIAN FIELD • PITTSBURGH, PA.

THIS WEEK

Friday, April 8

- No. 18/T17 Clemson at Pitt - 5 p.m.

Saturday, April 9

- No. 18/T17 Clemson at Pitt - 1 p.m.

Sunday, April 10

- No. 18/T17 Clemson at Pitt - 12 p.m.

• **Where:** Vatabedian Field | Pittsburgh, Pa.

• **Watch:** Friday's game is available on the ACC Network with Courtney Lyle and Danielle Lawrie on the call. Saturday and Sunday are back on ACCNX.

• **Live Stats** - ClemsonTigers.com/softball/schedule

• **Social Media** - [ClemsonSoftball](https://www.facebook.com/ClemsonSoftball)

CLEMSON OVERVIEW

- Clemson returns 21 players from last season to the 2022 roster and added eight newcomers.
- Most recently, the Tigers took two games from Furman on Wednesday after sweeping the North Carolina series last weekend.
- The Tigers are batting .278 as a team with a .471 slugging percentage and .382 on-base percentage.
- Clemson's pitching staff is posting a 1.79 ERA through 242.2 innings of work and struck out a combined 243 batters.

PITTSBURGH OVERVIEW

- Pittsburgh is led by fourth year head coach Jodi Hermanek.
- The team is posting a .248 average off 177 hits with 107 runs scored and 35 stolen bases. In the circle, the pitching staff holds a 4.19 ERA through 187.1 innings pitched with 180 strikeouts.
- Yvonne Whaley maintains a .316 average off 30 hits with 11 runs scored and a .337 slugging percentage. Dani Drogemuller leads the team with a 2.77 ERA with 114 strikeouts through 101 innings.

QUICK HITS

- Clemson has outscored opponents this season 187-80.
- The Tigers have run-ruled 10 opponents this season: FGCU, Kent State, LIU, Texas Tech, Boston U, Winthrop, Furman and three ACC opponents (Duke, Louisville and North Carolina).
- Clemson has 259 hits through 37 games, including posting 39 doubles and 42 home runs.
- The Tigers have 170 RBIs this season led by Valerie Cagle (32), Marissa Guimbarada (32), Alia Logoleo (30) and McKenzie Clark (17).
- When Clemson scores in the first inning, the Tigers are 14-2. The Tigers have outscored opponents 34-6 in the first inning.
- The Tigers are 25-4 when scoring first this season, no matter what inning.

THE NATIONALLY RANKED TIGERS

- The latest USA Today/NFCA poll has Clemson at No. 18.
- ESPN/USA Softball has the Tigers tied at No. 17.
- D1Softball.com and Softball America round out the polls with Clemson sitting at No. 19 in both.
- Clemson received its first single-digit ranking in program history clocking in at No. 9 on the ESPN/USA Softball

poll during the third week. They held the ranking for two weeks.

- Last season, Clemson climbed as high as No. 10 by ESPN/USA Softball and finished No. 17 last season.
- The RPI leading into week nine had Clemson at No. 12 and No. 7 on 2022 strength of schedule.

STANDOUT MOMENTS

- Opening weekend, Clemson only played 23 innings after run-ruling opponents in three games - two during the fifth inning and one in the sixth.
- Sophomores Regan Spencer and Millie Thompson threw Clemson's first combined no-hitter against Kent State, a five-inning run-rule victory.
- Sophomore McKenzie Clark hit the program's first inside the park home run against Akron on Feb. 26 dropping a ball into right center. She crossed home two steps ahead of the throw reaching the plate.
- Freshman Aby Vieira recorded her first collegiate home run with a grand slam out of right center against Akron. The grand slam was Clemson's first of the season.
- The Tigers defeated No. 13/8 Duke in run-rule fashion for another program first picking up a five-inning 10-2 win behind an eight strikeout performance from Thompson in the circle.
- The Tigers dominated the Gamecocks in the first matchup between the two in McWhorter Stadium. Cagle struck out 11 batters in the circle while joining Alia Logoleo and Clark hitting the long ball as Clemson won, 8-1.
- Clemson finished with 10 home runs against the Tar Heels led by Marissa Guimbarada hitting four, Logoleo hitting three - including a grand slam, Vieira hitting two and Maddie Moore tallying one.
- Guimbarada was named ACC Co-Player of the Week after the UNC series where she recorded four homers and eight RBIs. Guimbarada was also selected as one of the top NFCA performances of the week alongside teammate Alia Logoleo who tallied four home runs and 12 RBIs through four games.
- Guimbarada walked off her former team, Furman, in the first game on the doubleheader on Wednesday with a two-run homer in the bottom of the seventh inning.
- Thompson threw her first solo-career no-hitter with a five inning performance against Furman. Thompson threw only 52 pitches, 38 strikes, and picked up two strikeouts on the way to earning the Tigers' fifth program no-no.
- Arielle Oda tallied her first career home run with a two-run shot out of right field in the second game against Furman.

MILLIE ROCKED

- Sophomore left-handed pitcher Millie Thompson has come into her own in her second season with the program.
- She is posting a 1.26 ERA through 15 appearances and 61 innings pitched. She has 3 solo shutouts, the first three of her career, and has combined for five.
- She is second on the team with eight wins and has struck out 65 batters while only allowing 44 hits and giving up only nine walks limiting opponents to a .196 average.
- Thompson started the season throwing a combined

CLEMSON AT A GLANCE

| | |
|------------------------|--------------|
| Overall Record: | 27-10 |
| ACC Record: | 6-6 |
| Home Record: | 16-4 |
| Away Record: | 6-3 |
| Neutral Record: | 5-3 |
| Streak: | W6 |
| Last 5 Games: | 5-0 |
| Last 10 Games: | 8-2 |
| Day Record: | 16-5 |
| Night Record: | 11-5 |

HEAD COACH JOHN RITTMAN

| | |
|-------------------------------------|------------------|
| Third Season at Clemson: | 90-26 (.771) |
| ACC Record (Regular Season): | 40-12 (.769) |
| 21st Year Overall: | 840-377-3 (.688) |

CLEMSON HISTORY

| | |
|----------------------------------|-------|
| All-Time: | 90-26 |
| All-Time Record, Home: | 53-10 |
| All-Time Record, Away: | 23-8 |
| All-Time Record, Neutral: | 14-8 |

VS PITTSBURGH

| | |
|--------------------------|-----|
| All-Time: | 0-0 |
| Last Clemson Win: | N/A |
| Last Pitt Win: | N/A |
| Streak: | N/A |

*Note: A full 2022 schedule is available on the second page
 *Note to media members: Credential requests for home games at McWhorter Stadium open on the preceeding Monday of each game. Requests can be made at ClemsonTigers.com/softball under Media Resources.

WEEKLY POLLS

| Date | W-L | 2022 | | | |
|------|-------|------|------|----|----|
| | | NFCA | ESPN | D1 | SA |
| 2-7 | 0-0 | 15 | 14 | 14 | 14 |
| 2-15 | 3-1 | 15 | 12 | 13 | 14 |
| 2-22 | 6-3 | 15 | 9 | 13 | 12 |
| 3-1 | 11-3 | 14 | 9 | 13 | 11 |
| 3-8 | 12-6 | 17 | 15 | 17 | 17 |
| 3-15 | 17-6 | 17 | 15 | 18 | 19 |
| 3-22 | 18-8 | 16 | 15 | 19 | 21 |
| 3-29 | 21-10 | 18 | 16 | 19 | 21 |
| 4/5 | 25-10 | 18 | T17 | 19 | 19 |

| Date | W-L | 2021 | | | |
|------|------|------|------|----|----|
| | | NFCA | ESPN | D1 | SA |
| 3-29 | 22-4 | 18 | 19 | 23 | 20 |
| 4-5 | 26-4 | 18 | 18 | 20 | 19 |
| 4-12 | 26-4 | 17 | 18 | 19 | 19 |
| 4-17 | 32-4 | 16 | 16 | 18 | 16 |
| 4-26 | 37-4 | 13 | 13 | 15 | 13 |
| 5-3 | 37-4 | 13 | 11 | 15 | 13 |
| 5-10 | 40-5 | 13 | 10 | 16 | 13 |
| 5-17 | 42-6 | 13 | 10 | 17 | 14 |
| 6-10 | 44-8 | 18 | 17 | 19 | 22 |

Note: Clemson's all-time rankings can be found in the Clemson softball record book.

Stats and notes are updated going into series only

NOTES

2022 SCHEDULE

| Date | Day | Opponent (Rank) | Watch | Time/Result |
|-------------|-----|-----------------------------------|---------|-------------|
| 2-10 | Thu | \$ at FGCU | Youtube | W, 11-0 (5) |
| 2-11 | Fri | \$ Kent State | N/A | W, 8-0 (5) |
| 2-11 | Fri | \$ Texas | N/A | L, 0-4 |
| 2-12 | Sat | \$ LIU | N/A | W, 8-0 (6) |
| 2-13 | Sun | \$ Boston College | N/A | Canceled |
| 2-17 | Thu | % Texas Tech | ACCN | W, 8-0 (5) |
| 2-18 | Fri | % Tennessee | ESPN+ | W, 4-3 (9) |
| 2-19 | Sat | % Northwestern | ACCN | L, 0-7 |
| 2-19 | Sat | % Wisconsin | ESPN+ | L, 1-2 (8) |
| 2-20 | Sun | % Washington | ESPNU | W, 2-0 |
| 2-23 | Wed | at Charlotte | ESPN+ | W, 5-2 |
| 2-25 | Fri | # Boston University | ACCNX | W, 8-0 (5) |
| 2-25 | Fri | # St. Francis | ACCNX | W, 2-0 |
| 2-26 | Sat | # Akron | ACCNX | W, 10-5 |
| 2-26 | Sat | # Boston University | ACCNX | W, 7-3 |
| 3-1 | Tue | Gardner-Webb | ACCNX | W, 6-0 |
| 3-4 | Fri | * Virginia Tech | ACCN | L, 1-6 |
| 3-5 | Sat | * Virginia Tech | ACCN | L, 0-4 |
| 3-6 | Sun | * Virginia Tech | ACCNX | L, 2-4 |
| 3-9 | Wed | Mercer | ACCNX | W, 3-0 |
| 3-12 | Sat | ! Illinois | ACCNX | W, 3-1 |
| 3-13 | Sun | ! Illinois | ACCNX | W, 4-0 |
| 3-13 | Sun | ! Liberty | ACCNX | W, 5-4 (8) |
| 3-14 | Mon | ! Liberty | ACCNX | W, 1-0 (8) |
| 3-15 | Tue | Winthrop | ACCNX | W, 8-0 (5) |
| 3-18 | Fri | * at Duke | ACCNX | L, 2-6 |
| 3-19 | Sat | * at Duke | ACCNX | W, 10-2 (5) |
| 3-20 | Sun | * at Duke | ACCN | L, 1-7 |
| 3-23 | Wed | at Georgia | SECN | L, 2-3 |
| 3-25 | Fri | * Louisville | ACCNX | W, 5-2 |
| 3-26 | Sat | * Louisville | ACCN | W, 8-0 (5) |
| 3-27 | Sun | * Louisville | ACCN | L, 2-4 (8) |
| 3-30 | Wed | South Carolina | ACCN | W, 8-1 |
| 4-1 | Fri | * at North Carolina | ACCNX | W, 12-4 |
| 4-2 | Sat | * at North Carolina | N/A | W, 7-0 |
| 4-3 | Sun | * at North Carolina | ACCNX | W, 12-4 (5) |
| 4-6 | Wed | Furman | ACCNX | W, 3-2 |
| 4-6 | Wed | Furman | ACCNX | W, 8-0 (5) |
| 4-8 | Fri | * at Pittsburgh | ACCN | 5 p.m. |
| 4-9 | Sat | * at Pittsburgh | ACCNX | 1 p.m. |
| 4-10 | Sun | * at Pittsburgh | ACCNX | 12 p.m. |
| 4-12 | Tue | at South Carolina | ESPNU | 7 p.m. |
| 4-14 | Thu | * Notre Dame | ACCNX | 6 p.m. |
| 4-15 | Fri | * Notre Dame | ACCNX | 6 p.m. |
| 4-16 | Sat | * Notre Dame | ACCNX | 1 p.m. |
| 4-21 | Thu | * at Florida State | ESPN2 | 8 p.m. |
| 4-22 | Fri | * at Florida State | ACCN | 6 p.m. |
| 4-23 | Sat | * at Florida State | ACCN | 2 p.m. |
| 4-27 | Wed | ETSU | ACCNX | 6 p.m. |
| 4-29 | Fri | * Georgia Tech | ACCNX | 6 p.m. |
| 4-30 | Sat | * Georgia Tech | RSN | 1 p.m. |
| 5-1 | Sun | * Georgia Tech | RSN | 12 p.m. |
| 5-11 - 5-14 | ^ | ACC Championship | ACCN | TBA |
| 5-19 - 5-22 | & | NCAA Regionals | TBA | TBA |
| 5-26 - 5-29 | & | NCAA Super Regionals | TBA | TBA |
| 6-2 - 6-9 | & | NCAA Women's College World Series | TBA | TBA |

Note: Home games in **bold**; all times are Eastern
 * - ACC regular-season game
 \$ - FGCU Kickoff Classic (Fort Myers, Fla.)
 % - St. Pete/Clearwater Elite Invitational (Clearwater, Fla.)
 # - Clemson Classic (Clemson, S.C.)
 ! - Tiger Invitational (Clemson, S.C.)
 ^ - ACC Championship (Louisville, Ky.)
 & - NCAA Tournament (Oklahoma City, Okla.)



no-hitter with teammate Regan Spencer.
 • She followed that performance with her first solo career no-no against Furman in the second game of the doubleheader. She was one error away from throwing a perfect game that happened during the first batter of the game.
 • Other notable performance from Thompson include: a 5.0 IP run-rule victory over No. 13 Duke with eight strikeouts and no walks; a nine-strikeout performance vs. Louisville; a career-high 11 strikeouts in shutout victory over Illinois.

MCKENZIE "PIE" CLARK

• Sophomore McKenzie Clark got off to a slow start in 2022 but hit her stride nicely in the middle of the season ready to prove why she was an ACC Preseason Selection.
 • Clark, best known by her nickname "Pie," has been flexible and productive in the lineup floating between the leadoff and second spot.
 • Against the Gamecocks, Clark was only a triple away from hitting for the cycle after clocking a single, double and home run with two runs scored.
 • Clark is batting .343 in conference play clocking 12 hits - including three home runs - 11 runs scored and eight RBIs (all of which are team highs).
 • On the season as a whole, Clark is batting .306 off 34 hits with 17 RBIs and 29 runs scored. She has also stolen six bases and hit five home runs - including an inside the park homer vs. Akron.
 • Defensively, Clark is one of three consistent starters that has posted a perfect 1.000 fielding percentage covering the center field grass with ease and grace putting her on pace to be in the top running for an inaugural Golden Glove Award.

GUIMBARDA GREATNESS

• Graduate Marissa Guimbarda has been a key contributor to Clemson's offense over the past three seasons.
 • Prior to her time in the Orange and Regalia, Guimbarda played two seasons at Furman.
 • Most recently, she hit a walk off two-run homer against her former team, Furman, to give Clemson the 3-2 win. The homer brings her career total to 58.
 • Guimbarda hit four home runs against North Carolina. She is currently ranked fifth among action players in the NCAA for most home runs in her career.
 • She hit 24 while at Furman and has 34 at Clemson.
 • Guimbarda becomes the 196th player in NCAA Division I history to hit 50 homers during her collegiate career.

CONSISTENT CAMMY

• Cammy Pereira has been a consistent presence since signing to join Clemson's inaugural class being the Tigers' go-to face of the program in different situations.
 • Pereira was recently recognized at the Clemson Board Meeting as a notable student-athlete having been the driving force to multiple Clemson initiatives including but not limited to: being the leader of the Tigers Unite affinity group CU Pride, spoken at several panels regarding issues in the LGBTQ community, participating in Clemson academic research, is a Paw Pal mentor and a student liaison for the We CU Committee for staff engagement.
 • Following her time at Clemson, Pereira will attend medical school at Via College of Osteopathic Medicine beginning in July.
 • Pereira became the third softball player at Clemson to be awarded the Weaver-James-Corrigan postgraduate scholarship by the ACC.
 • On the field this season, Pereira has started every game at second base and maintains a .305 average with 20 runs scored and 12 RBIs.

• She hit the first home run of the 2022 season against FGCU and the most recently homer at Georgia - both were solo home runs in the second inning.

FIRST 100

• Clemson softball played its 100th game in program history on March 13 against Illinois at the Tiger Invitational. The Tigers won 4-0 behind Millie Thompson's first collegiate career shutout with a career-high 11 strikeouts.
 • The 100th game was played almost five years to the date of the program being announced - program addition was announced on March 14, 2017.
 • Through the first 100 games, the softball team paced itself to tie the best start by any program at Clemson. Softball ties women's tennis with 78 wins. Other sports at Clemson can be found below.
 • Among current Clemson head coaches through their first 100 games, Coach Rittman solidified himself as the coach with the best record.
 • Rittman recorded 78 wins to surpass baseball's Monte Lee and football's Dabo Swinney, who each held a 74-26 record through 100 games.

FIRST 100 GAMES - BY PROGRAM

| Sport (1st Year) | Wins | Loss | Ties | Percentage |
|-----------------------|------|------|------|------------|
| Softball (2020) | 78 | 22 | - | .780 |
| Women's Tennis (1976) | 78 | 22 | - | .780 |
| WBasketball (1975-76) | 73 | 37 | - | .730 |
| Women's Soccer (1994) | 69 | 29 | 2 | .700 |
| Volleyball (1977) | 68 | 32 | - | .680 |
| Men's Soccer (1934) | 63 | 27 | 10 | .680 |
| Baseball (1896) | 60 | 36 | 4 | .620 |
| Football (1896) | 58 | 34 | 8 | .620 |
| MBasketball (1911-12) | 55 | 44 | 1 | .555 |
| Men's Tennis (1921) | 47 | 48 | 5 | .495 |

CAGLE CALLS GAME

• Prior to 2022, Cagle was named a Preseason First Team All-American by D1Softball and Softball America.
 • At the St. Pete/Clearwater Elite Invitational, Cagle opened the weekend with a five-inning run rule victory over Texas Tech.
 • She followed the TTU game with a nine inning performance in the circle to defeat No. 18/15 Tennessee. She struck out 13 batters en route to earning the victory.
 • Cagle threw a complete-game shutout against the No. 6/5 Huskies with 10 strikeouts and hit a solo homer in the sixth inning to upset Washington.
 • Cagle hit two home runs in the midweek game against Winthrop clocking a solo homer in the first inning and her second in the fourth inning to extend the Tiger's lead to 8-0 en route to earning the run-rule victory.
 • Against Louisville, the Yorktown, Va. native picked up 12 strikeouts in eight innings of work and limited opponents to a .138 batting average - she also shutout the Cardinals in five innings of work for the run-rule victory on Saturday.
 • In the midweek against South Carolina, Cagle notched 11 strikeouts in the circle and kicked off the game with a three-run homer in the bottom of the first.
 • Last season, Cagle became the first softball player in ACC history to be named both the Player and Freshman of the Year.
 • She was named a NFCA Second Team All-American, a NFCA National Freshman of the Year Top-3 finalist and a USA Softball Collegiate Player of the Year Top 10 Finalist last season.

DANGE(RUSS)

• Graduate transfer Sam Russ comes to Clemson to use her final year of eligibility.
 • Russ decided to use her extra year at Clemson after her father played baseball for the Tigers from 1980-83

NOTES

and her mom graduated from Clemson.

- Russ spent her first four years at NC State where she was a three-time ACC selection and holds the Wolf-pack's record for both career (103) and single season (32) stolen bases.
- She currently ranks first in the NCAA among active D1 players for most career stolen bases (122).
- She hit her first home run in the Orange and Regalia against Liberty at the Tiger Invitational and second against Duke.

TOP 25 VICTORIES

- The Tigers defeated two top 25 programs at the St. Pete/Clearwater Elite Invitational in No. 18/15 Tennessee an No. 6/45 Washington.
- Clemson took Tennessee to nine innings to earn the 4-3 win with six players recording a hit, including Marissa Guimbarda hitting a solo blast out of left field.
- Clemson picked up its first top-10 victory in program history defeating the No. 6/5 Washington Huskies in seven innings on the final day of the 2022 St. Pete/Clearwater Elite Invitational.
- Valerie Cagle earned both wins in the circle. She threw all 9.0 innings with 13 strikeouts against Tennessee and a complete 7.0 inning game against the Huskies, picking up 10 strikeouts and limiting them to only four hits.
- The Washington win was Clemson's first seven-inning win this season and handed the Huskies their first loss.
- The Tigers captured a run-rule victory over a ranked opponent for the first time in program history defeating No. 13/8 Duke in five innings, 10-2.
- Millie Thompson pitched all five innings, striking out eight batters without giving up a walk to earn the victory for the Tigers.

PITCHER PROWESS

- Despite being young, Clemson's pitching staff proves they are up for any battle.
- The Tigers have four consistent pitchers that have pitched a minimum of 36 innings in 2022 with at least four wins- Valerie Cagle (104.1 - 11), Millie Thompson (61 - 8), Regan Spencer (39.2 - 4) and Brooke McCubbin (36.2 - 4).
- As a group, they are posting a 1.79 ERA with 243 strikeouts through 242.2 innings and have limited opponents to a .239 batting average or lower.
- Cagle has appeared in 21 games with 10 complete performances, four solo shutouts and two saves. She has 129 strikeouts on the year.
- Thompson came back even stronger for her second year in the Orange and Regalia clocking 65 strikeouts in 15 appearances.
- Spencer has been Clemson's hidden threat appearing in 13 games with one solo shutout, four combined and has struck out 27 batters. She has only allowed 28 hits this season and allowed only nine runs, six earned, to cross home while in the circle.
- Spencer is limiting opponents to a .194 average at the plate and only given up 11 walks.
- Freshman Brooke McCubbin has been a solid relief pitcher for the Tigers with six combined shutouts and picked up two saves against Mercer.

YOUNG PROGRAM

- The Clemson softball team has accomplished multiple feats for being a program with just over 100 games.
- Entering this season, the only players with over 100 collegiate games under their belts are transfers that began their careers at other programs. These players include Marissa Guimbarda, Grace Mattimore, Cammy Pereira, Sam Russ and Bailey Taylor.
- Valerie Cagle surpassed the 100-game mark after

starting every game in program history for the Tigers. JoJo Hyatt hit the 100-game mark at Georgia, while Alia Logoleo and Arielle Oda surpassed it during the UNC series.

- The remaining 20 players on the 2022 roster have appeared in less than 100 games.
- The Tigers won the ACC Regular Season Title in their first complete season in 2021 after the 2020 inaugural season was cut short due to COVID-19.
- In only their second season, the Tigers also competed in the ACC Championship game and at the Tuscaloosa Regional.

SENIOR CLASS AWARD

- Graduates Marissa Guimbarda and Cammy Pereira have been selected as two of the 30 candidates for the 2022 Softball Senior CLASS Award.
- An acronym for Celebrating Loyalty and Achievement for Staying in School, the Senior CLASS Award focuses on the total student-athlete and encourages students to use their platform in athletics to make a positive impact as leaders in their communities.
- Clemson is one of two programs in the country to have multiple athletes selected as candidates, the other being Washington.
- The 30 candidates will be narrowed to 10 finalists later this season, and those names will be placed on the official ballot for nationwide voting.

ACC PRESEASON HONORS

- The Tigers have been picked to finish second in the ACC
- Clemson pitcher Valerie Cagle and outfielder McKenzie Clark were named to the 2022 Preseason All-ACC Team based on vote by the league's head coaches.
- Cagle returns after being named the ACC Player and Freshman of the Year in 2021. She batted .404 with a .821 slugging percentage and 17 home runs. She also led the Tigers with a 1.16 ERA and 267 strikeouts.
- Clark had a breakout freshman season posting a .355 average and .639 slugging percentage. She stole a team-high 23 bases in 2021 and was an NFCA All-Region Selection.

CLEMSON+

- Clemson Athletics and IPTAY have launched Clemson+, a streaming service dedicated to showing what it's like to be a Tiger.
- Clemson+ showcases the best video content, and is now available on all major streaming platforms, via the Clemson Tigers app and web browser.
- The subscription will be included as an exclusive benefit to more than 26,000 IPTAY and Collegiate Club members.
- Clemson softball will be apart of the initial launch of Clemson+ with a Clemson Softball All-Access feature.
- Get an inside look at the day-to-day aspects of the Clemson softball program and exclusive interviews with the coaching staff and student-athletes. Additional episodes will be added in the coming weeks.

LEGACY - BLACK HISTORY MONTH

- February allowed us to shine a spotlight on the many contributions, successes and challenges of African Americans at Clemson.
- The next iteration will feature student-athletes and staff members talking about an inspirational Black person in their lives.
- Clemson softball's own Morgan Johnson's has penned a letter to Jackie Robinson about his influence and the impact he has had on her career in the sports community.
- Johnson will sit down with ESPN later this month to

TIGER TIDBITS

| Category | Record |
|----------------------------|--------|
| Record | 27-10 |
| ACC Record | 6-6 |
| Non-Conference Record | 21-4 |
| Versus Top 25 (NFCA) | 3-10 |
| Versus Top 10 (NFCA) | 1-4 |
| Versus Top 5 (NFCA) | -- |
| In February | 11-3 |
| In March | 11-7 |
| In April | 5-0 |
| In May | -- |
| On Monday | 1-0 |
| On Tuesday | 2-0 |
| On Wednesday | 5-1 |
| On Thursday | 2-0 |
| On Friday | 6-3 |
| On Saturday | 7-3 |
| On Sunday | 4-3 |
| In Day Games | 16-5 |
| In Night Games | 11-5 |
| In 1-Run Games | 4-2 |
| In 2-Run Games | 3-2 |
| In 5+ Run Games | 15-3 |
| After a Loss | 6-4 |
| After a Win | 20-5 |
| In Extra Innings | 3-2 |
| Shutouts | 15-3 |
| Scoring First | 25-4 |
| Scoring in the 1st Innings | 14-2 |
| Leading After 4 | 22-3 |
| Trailing After 4 | 2-5 |
| Tied After 4 | 3-2 |
| Leading After 5 | 12-2 |
| Trailing After 5 | 2-6 |
| Tied After 5 | 4-2 |
| Leading After 6 | 14-1 |
| Trailing After 6 | 2-7 |
| Tied After 6 | 1-2 |
| Scoring 5 or More Runs | 19-0 |
| Allowing 5 or More | 1-4 |
| Out-hit opponent | 22-2 |
| Opponent out-hit | 3-7 |
| Hits are equal | 2-1 |
| Make 0 errors | 10-3 |
| Make 1 error | 13-4 |
| Make 2+ error | 4-3 |
| Opp. makes 0 errors | 8-4 |
| Opp. makes 1 error | 7-2 |
| Opp. makes 2+ errors | 12-4 |

MEDIA SERVICES

CLEMSON ATHLETIC COMMUNICATIONS

| | |
|---------------------|--|
| Contact | Valerie Johnson (Central Michigan '18) |
| Email | vjohns4@clemson.edu |
| Cell Phone | 712-269-4149 |
| Ticket Office Phone | 1-800-CLEMSON |
| Website | ClemsonTigers.com |
| Social Media | ClemsonSoftball |

ACC MEDIA RELATIONS

Justin Wilson is the softball athletic communications contact at the ACC office. He can be reached at 336.369.3713 or at jwilson@acc.org.

CREDENTIALS

Members of the working press who desire a media credential to a Clemson softball home game ClemsonTigers.com/softball under Media Resources. There is limited space for writers inside McWhorter Stadium. Members of the media must request a pass at least 24 hours prior to each game to be considered for admittance.

WEBSITE & SOCIAL MEDIA

Up-to-date stats, notes, stories and box scores can be found on Clemson's official website (ClemsonTigers.com). Live online video, live audio and live stats can be accessed on the ClemsonTigers.com softball schedule page. Fans can also follow ClemsonSoftball on Twitter, Instagram and Facebook.

NOTES

discuss the impact Jackie Robinson had on her life as we near the 75th anniversary since he broke the color barrier in baseball on April 15.

- Her feature is now live on ClemsonTigers.com. View it on the main page under "My Story."

FALL ACADEMIC SUCCESS

- Clemson University student-athletes earned a 3.19 cumulative GPA in the Fall 2021 semester, the seventh consecutive semester greater than 3.0, and the third-highest ever.
- Clemson softball set a program-record 3.48 GPA in the fall of 2021.
- Clemson's department-wide graduation success rate (GSR) also hit a record of 95 percent in the most recent release.

SEASON TICKETS SOLD OUT

- The Clemson community continues to show its unwavering support to the Clemson softball team through ticket sales.
- Season tickets were sold out prior to the New Year, and IPTAY members and the general public have done their part by snapping up all single-game tickets.
- Tickets for every game during the regular-season at McWhorter sold out prior to opening day.

UPCOMING

- Clemson travels to Columbia, S.C. for the second game of the home-and-home series vs. the Gamecocks before hosting Notre Dame in a three-game series beginning April 14.

HOME RUNS

| # | Player ^(#) | Opponent (Date) | OB | Inn. | Outs |
|-----|---------------------------|-------------------------------|----|------|------|
| 1. | Pereira ⁽¹⁾ | \$ at FGCU (2-10) | 0 | 2 | 0 |
| 2. | Cagle ⁽¹⁾ | \$ at FGCU (2-10) | 2 | 5 | 1 |
| 3. | Logoleo ⁽¹⁾ | \$ vs. Kent State (2-11) | 2 | 1 | 2 |
| 4. | Cagle ⁽²⁾ | \$ vs. LIU (2-12) | 2 | 6 | 2 |
| 5. | Guimbarda ⁽¹⁾ | % vs. No. 18 Tennessee (2-18) | 0 | 3 | 2 |
| 6. | Cagle ⁽³⁾ | % vs. No. 6 Washington (2-20) | 0 | 6 | 2 |
| 7. | Guimbarda ⁽²⁾ | at Charlotte (2-23) | 1 | 4 | 0 |
| 8. | Guimbarda ⁽³⁾ | # Boston University (2-25) | 1 | 2 | 0 |
| 9. | Logoleo ⁽²⁾ | # Boston University (2-25) | 1 | 5 | 1 |
| 10. | Vieira ⁽¹⁾⁺ | # Akron (2-26) | 3 | 1 | 2 |
| 11. | Clark ⁽¹⁾⁺ | # Akron (2-26) | 0 | 3 | 2 |
| 12. | Moore ⁽¹⁾ | # Boston University (2-26) | 1 | 3 | 2 |
| 13. | Cagle ⁽⁴⁾ | Gardner-Webb (3-1) | 2 | 3 | 0 |
| 14. | Guimbarda ⁽⁴⁾ | Gardner-Webb (3-1) | 0 | 3 | 0 |
| 15. | Cagle ⁽⁵⁾ | * Virginia Tech (3-6) | 0 | 7 | 0 |
| 16. | Guimbarda ⁽⁵⁾ | ! Illinois (3-13) | 2 | 3 | 2 |
| 17. | Russ ⁽¹⁾ | ! Liberty (3-13) | 0 | 1 | 1 |
| 18. | Cagle ⁽⁶⁾ | Winthrop (3-15) | 0 | 1 | 2 |
| 19. | Logoleo ⁽³⁾ | Winthrop (3-15) | 2 | 3 | 2 |
| 20. | Cagle ⁽⁷⁾ | Winthrop (3-15) | 2 | 4 | 2 |
| 21. | Clark ⁽²⁾ | * at Duke (3-18) | 0 | 6 | 0 |
| 22. | Russ ⁽²⁾ | * at Duke (3-20) | 0 | 7 | 1 |
| 23. | Pereira ⁽²⁾ | at Georgia (3-23) | 0 | 2 | 2 |
| 24. | Logoleo ⁽⁴⁾ | * Louisville (3-26) | 2 | 2 | 2 |
| 25. | Clark ⁽³⁾ | * Louisville (3-26) | 0 | 3 | 1 |
| 26. | Cagle ⁽⁸⁾ | * Louisville (3-26) | 0 | 3 | 1 |
| 27. | Clark ⁽⁴⁾ | * Louisville (3-26) | 0 | 5 | 0 |
| 28. | Cagle ⁽⁹⁾ | South Carolina (3-30) | 2 | 1 | 0 |
| 29. | Logoleo ⁽⁵⁾ | South Carolina (3-30) | 0 | 5 | 2 |
| 30. | Clark ⁽⁵⁾ | South Carolina (3-30) | 0 | 6 | 1 |
| 31. | Logoleo ⁽⁶⁾ | * North Carolina (4-1) | 2 | 1 | 2 |
| 32. | Vieira ⁽²⁾ | * North Carolina (4-1) | 0 | 4 | 0 |
| 33. | Logoleo ⁽⁷⁾ | * North Carolina (4-1) | 3 | 7 | 1 |
| 34. | Guimbarda ⁽⁶⁾ | * North Carolina (4-2) | 1 | 3 | 0 |
| 35. | Moore ⁽²⁾ | * North Carolina (4-2) | 0 | 4 | 0 |
| 36. | Guimbarda ⁽⁷⁾ | * North Carolina (4-2) | 2 | 4 | 1 |
| 37. | Guimbarda ⁽⁸⁾ | * North Carolina (4-3) | 0 | 2 | 0 |
| 38. | Logoleo ⁽⁶⁾ | * North Carolina (4-3) | 1 | 2 | 0 |
| 39. | Vieira ⁽³⁾ | * North Carolina (4-3) | 0 | 2 | 0 |
| 40. | Guimbarda ⁽⁹⁾ | * North Carolina (4-3) | 1 | 5 | 2 |
| 41. | Guimbarda ⁽¹⁰⁾ | Furman ¹ (4-6) | 1 | 7 | 2 |
| 42. | Oda ⁽¹⁾ | Furman ² (4-6) | 1 | 2 | 0 |

++ - Grand Slam
+- - Inside the Park Home Run

CLEMSON VS. RANKED TEAMS

| 2020 | | | | | | |
|------|--------------------------------|---------------|-----------------|-------|-------|--|
| Date | Opponent | CU NFCA, ESPN | Opp. NFCA, ESPN | W-L | Score | |
| 2-26 | Georgia | NR | 14, 15 | W | 4-1 | |
| 2021 | | | | | | |
| Date | Opponent | CU NFCA, ESPN | Opp. NFCA, ESPN | W-L | Score | |
| 2-18 | * Virginia Tech | RV, N/A | 14, 15 | W | 8-1 | |
| 2-19 | * Virginia Tech ⁽¹⁾ | RV, N/A | 14, 15 | L (5) | 0-9 | |
| 2-19 | * Virginia Tech ⁽²⁾ | RV, N/A | 14, 15 | L | 1-4 | |
| 3-26 | * Duke ⁽¹⁾ | 20, 21 | 11, 12 | L | 0-2 | |
| 3-26 | * Duke ⁽²⁾ | 20, 21 | 11, 12 | L | 1-3 | |
| 3-27 | * Duke | 20, 21 | 11, 12 | W | 4-1 | |
| 3-28 | * Duke | 20, 21 | 11, 12 | W | 4-2 | |
| 5-14 | * Virginia Tech | 13, 10 | 20, 20 | W | 2-0 | |
| 5-15 | * Duke | 13, 10 | 21, 21 | L | 0-1 | |
| 5-22 | ! Alabama | 13, 10 | 3, 3 | L | 0-6 | |
| 5-23 | ! Alabama | 13, 10 | 3, 3 | L | 0-5 | |

| 2022 | | | | | | |
|------|-----------------|---------------|-----------------|-------|-------|--|
| Date | Opponent | CU NFCA, ESPN | Opp. NFCA, ESPN | W-L | Score | |
| 2-11 | Texas | 15, 14 | 10, 8 | L | 0-4 | |
| 2-18 | Tennessee | 15, 12 | 18, 15 | W (9) | 4-3 | |
| 2-19 | Northwestern | 15, 12 | RV, 23 | L | 0-7 | |
| 2-20 | Washington | 15, 12 | 6, 5 | W | 2-0 | |
| 3-4 | * Virginia Tech | 14, 9 | 6, 6 | L | 0-6 | |
| 3-5 | * Virginia Tech | 14, 9 | 6, 6 | L | 0-4 | |
| 3-6 | * Virginia Tech | 14, 9 | 6, 6 | L | 2-4 | |
| 3-18 | * Duke | 17, 15 | 13, 8 | L | 2-6 | |
| 3-19 | * Duke | 17, 15 | 13, 8 | W (5) | 10-2 | |
| 3-20 | * Duke | 17, 15 | 13, 8 | L | 1-7 | |
| 3-23 | Georgia | 16, 15 | 17, 21 | L | 2-3 | |

Bold denotes home game
* - ACC regular-season game; ^ - ACC Championship; ! - Regionals

| | |
|----------------|-------------|
| Total | 8-15 |
| Home | 4-7 |
| Away | 1-5 |
| Neutral | 3-3 |
| Non-Conference | 3-5 |
| ACC Only | 5-10 |

ADDITIONAL MEDIA RESOURCES

- More information and a digital version of this set of game notes can be found by scanning the QR Code.



TEAM SUPERLATIVES

| | |
|-----------------|------------------------------------|
| OFFENSE | |
| At bats | 34, at Charlotte (Feb. 23) |
| Runs scored | 12, 2x, at North Carolina (Apr. 3) |
| Hits | 13, 2x, at North Carolina (Apr. 1) |
| RBI | 12, at North Carolina (Apr. 1) |
| Doubles | 6, at Charlotte (Feb. 23) |
| Triples | 2, vs. Texas Tech (Feb. 17) |
| Home runs | 4, 2x, at North Carolina (Apr. 3) |
| Walks | 8, 2x, at North Carolina (Apr. 3) |
| Strikeouts | 13, Virginia Tech (Mar. 6) |
| Sac flies | 1, 4 times |
| Stolen bases | 6, Furman (Apr. 6) |
| Hit by pitch | 4, at North Carolina (Apr. 2) |
| FIELDING | |
| Putouts | 27, vs. Tennessee (Feb. 18) |
| Assists | 14, 2x, Illinois (Mar. 12) |
| Errors | 4, Virginia Tech (Mar. 5) |
| DPs turned | 3, Mercer (Mar. 9) |
| PITCHING | |
| Innings pitched | 9.0, vs. Tennessee (Feb. 18) |
| Runs allowed | 7, 2x at Duke (Mar. 20) |
| Earned runs | 7, at Duke (Mar. 20) |
| Walks allowed | 6, at Charlotte (Feb. 23) |
| Strikeouts | 13, 2x, Gardner-Webb (Mar. 1) |
| Hits allowed | 11, 2x, Virginia Tech (Mar. 5) |

LAST TIME..

| | |
|-----------------------------|---|
| OFFENSE | |
| Hit two HRs in a game | Marissa Guimbarda (at North Carolina, 4/3/22) |
| Hit three HRs in a game | Alia Logoleo (at Syracuse, 5/9/21) |
| Hit two HRs in an inning | N/A |
| Hit grand slam | Alia Logoleo (at North Carolina 4/1/22) |
| Leadoff HR [inning] | Marissa Guimbarda (at North Carolina 4/3/22) |
| Walkoff HR | Marissa Guimbarda (Furman, 4/6/22) |
| Walkoff HR [run rule] | Alia Logoleo (Boston U, 2/25/22) |
| Pinch-hit HR | N/A |
| Inside the Park HR | McKenzie Clark (Akron, 2/26/22) |
| HR in back-to-back games | Marissa Guimbarda (at UNC 4/2, at UNC, 4/3/22 & Furman, 4/6/22) |
| Back-to-back HRs | Alia Logoleo & Aby Vieira (at UNC, 4/3/22) |
| Two doubles in a game | Marissa Guimbarda (Liberty, 3/13/22) |
| Three doubles in a game | N/A |
| Two triples in a game | N/A |
| Hit for the cycle | N/A |
| Four hits in a game | McKenzie Clark (Akron 2/26/22) |
| Drove in five runs | Marissa Guimbarda (at North Carolina, 4/2/22) |
| Drove in six runs | Valerie Cagle (at FGCU, 2/10/22) |
| Drove in seven runs | N/A |
| Drove in eight runs | Alia Logoleo (at North Carolina, 4/1/22) |
| Drove in 10 runs | Alia Logoleo (at Syracuse, 5/9/21) |
| Scored four runs | Alia Logoleo (at Syracuse, 5/9/21) |
| Walkoff hit [non-HR] | Aby Vieira (Louisville, 3/26/22 -- single) |
| Walkoff [non-hit] | Alia Logoleo (Liberty, 3/14/22 -- error) |
| Walkoff [pinch hitter] | Kyah Keller (Liberty, 3/13/22 -- single) |
| PITCHING | |
| Threw a no-hitter | Millie Thompson (5.0 IP, Furman, 4/6/22) |
| Threw a combined no-hitter | Regan Spencer & Millie Thompson (5.0 IP, vs. Kent State, 2/11/22) |
| Threw a perfect game | N/A |
| Threw a solo shutout | Millie Thompson (Furman, 4/6/22) |
| Had 14 strikeouts | Valerie Cagle (Georgia Tech, 5/13/21) |
| Had 13 strikeouts | Valerie Cagle (vs Tennessee, 2/18/22) |
| Had 12 strikeouts | Valerie Cagle (at North Carolina, 4/1/22) |
| Had 11 strikeouts | Valerie Cagle (South Carolina, 3/30/22) |
| Had 10 strikeouts | Valerie Cagle (vs No. 6/Washington, 2/20/22) |
| Pitched >7 innings | Valerie Cagle (8.0 IP, vs. Liberty, 3/13/22) |
| TEAM | |
| Won 10 straight games | 2021 (19: Mar. 27 - May 8) |
| Won 15 straight games | 2021 (19: Mar. 27 - May 8) |
| Won 20 straight games | N/A |
| Extra-Innings victory | 3/14/22, No. 17 Clemson 1, Liberty 0 (8 Inn.) |
| Extra-Innings loss | 3/27/22, No. 16 Clemson 2, Louisville 4 (8 Inn.) |
| Played 11 innings | 3/19/21, No. 23 Clemson 4, at Louisville 0 |
| Played 10 innings | N/A |
| Played nine innings | 2/18/22, No. 15 Clemson 4, No. 18 Tennessee 3 |
| Played eight innings | 3/27/22, No. 16 Clemson 2, Louisville 4 |
| Was no-hit | N/A |
| Was shut out | 3/6/22, No. 6 Virginia Tech 4, No. 14 Clemson 0 |
| Beat a ranked opponent | 3/19/22, No. 17 Clemson 10, No. 13 Duke 2 |
| Beat a top-10 opponent | 2/20/22, No. 15 Clemson 2, No. 6 Washington 0 |
| Beat a top-10 ACC opponent | N/A |
| Run-ruled a ranked opponent | 3/19/22, No. 17 Clemson 10, No. 13 Duke 2 |
| Tied an opponent | N/A |

PLAYER SUPERLATIVES

| | |
|-----------------|---|
| OFFENSE | |
| At bats | 5, 2x, McKenzie Clark (vs. Tennessee - Feb. 18) |
| Runs scored | 4, McKenzie Clark (at FGCU - Feb. 10) |
| Hits | 4, McKenzie Clark (Akron - Feb. 26) |
| RBI | 8, Alia Logoleo (at North Carolina - Apr. 1) |
| Doubles | 2, 3x, Marissa Guimbarda (Liberty - Apr. 13) |
| Triples | 1, 7 times |
| Home runs | 2, 5 times |
| Walks | 3, Valerie Cagle (Akron - Feb. 26) |
| Strikeouts | 3, 5 times |
| Sac flies | 1, 4 times |
| Stolen bases | 2, 4 times |
| Hit by pitch | 2, 3x, Sam Russ (North Carolina - Apr. 2) |
| FIELDING | |
| Putouts | 13, 2x, Aby Vieira (Louisville - Mar. 27) |
| Assists | 6, 3x, Maddie Moore (South Carolina - Mar. 30) |
| Errors | 2, 2x, Sam Russ (Virginia Tech - Mar. 6) |
| PITCHING | |
| Innings pitched | 9.0, Valerie Cagle (vs. Tennessee - Feb. 18) |
| Runs allowed | 7, Brooke McCubbin (vs. Northwestern - Feb. 19) |
| Earned runs | 6, 2x, Valerie Cagle (at Duke - Mar. 18) |
| Walks allowed | 3, 7 times |
| Strikeouts | 13, Valerie Cagle (vs. Tennessee - Feb. 18) |
| Hits allowed | 9, 2x, Valerie Cagle (Virginia Tech - Mar. 4) |

ROSTER

NUMERICAL

| # | Player | Pos. | B/T | Yr. | Ht. | Hometown | Previous School / High School |
|----|-------------------|---------|-----|-------|------|-----------------------|--|
| 1 | Rachel Gibson | RHP | R-R | Fr. | 5-9 | Ringgold, Ga. | Heritage HS |
| 2 | Brooke McCubbin | RHP/INF | R-R | Fr. | 5-10 | Locust Grove, Ga. | Locust Grove HS |
| 3 | Sam Russ | OF | L-R | +Gr. | 5-8 | Charlotte, N.C. | NC State / Providence Day HS |
| 4 | Aby Vieira | C/UTL | L-R | Fr. | 5-9 | Mission Viejo, Calif. | Mission Viejo HS |
| 5 | Ansley Houston | INF | R-R | So. | 5-6 | Grantville, Ga. | Newnan HS |
| 6 | Carlee Shannon | OF | R-R | **So. | 5-7 | Chester, S.C. | York Comprehensive HS |
| 7 | McKenzie Clark | OF | R-R | So. | 5-5 | Myakka City, Fla. | Lakewood Ranch HS |
| 8 | Grace Hiller | INF/OF | R-R | Fr. | 5-9 | Macon, Ga. | Tattal Square Academy |
| 9 | Sarah Howell | C/UTL | R-R | So. | 5-4 | Oxford, Ala. | Oxford HS |
| 10 | Emma Whitfield | RHP | L-R | *So. | 5-9 | Toccoa, Ga. | Stephens County HS |
| 11 | Haylee Whitesides | RHP/INF | R-R | Fr. | 5-5 | Duncan, S.C. | Byrnes HS |
| 12 | Cammy Pereira | INF/OF | L-R | **Gr. | 5-6 | Winston-Salem, N.C. | Furman University / West Forsyth HS |
| 13 | Abi Stuart | C/UTL | R-R | *So. | 5-9 | Snow Camp, N.C. | Southern Alamance HS |
| 15 | Madison May | OF/INF | R-R | *So. | 5-9 | Valdosta, Ga. | Lowndes HS |
| 16 | Alia Logoleo | INF/OF | R-R | *So. | 5-8 | Nashville, Tenn. | Hillsboro HS |
| 17 | Regan Spencer | RHP | R-R | So. | 5-11 | Lexington, N.C. | North Davidson HS |
| 18 | Bailey Taylor | INF | R-R | *Gr. | 5-7 | Winnsboro, S.C. | Troy University / Richard Winn Academy |
| 19 | Jaden Cheek | INF/OF | R-R | So. | 5-9 | Carnesville, Ga. | Franklin County HS |
| 21 | Jadeyn Ruszkowski | INF | L-L | Fr. | 5-8 | Lithia, Fla. | Newsome HS |
| 23 | JoJo Hyatt | C | R-R | **So. | 5-8 | Buford, Ga. | Buford HS |
| 24 | Arielle Oda | OF/INF | L-R | **So. | 5-4 | Buford, Ga. | Buford HS |
| 25 | Marissa Guimbarda | UTL | R-R | *Gr. | 5-6 | Suwanee, Ga. | Furman University / Lambert HS |
| 27 | Grace Mattimore | C/UTL | R-R | *Gr. | 5-7 | Ashburn, Va. | Army West Point / Broad Run HS |
| 28 | Maddie Moore | INF | R-R | Fr. | 5-7 | Loomis, Calif. | Del Oro HS |
| 42 | Morgan Johnson | OF | R-R | *So. | 6-1 | Evans, Ga. | Evans HS |
| 58 | Kyah Keller | INF | R-R | *So. | 6-0 | Hollywood, Ala. | Battle Ground Academy |
| 72 | Valerie Cagle | P/UTL | L-R | *So. | 5-9 | Yorktown, Va. | Homeschooled |
| 77 | Hannah Goodwin | INF | R-R | **Fr. | 5-8 | West Columbia, S.C. | White Knoll HS |
| 87 | Millie Thompson | LHP/INF | L-L | So. | 5-7 | Bedford, Va. | Liberty HS |

Head Coach:

John Rittman (3rd season • New Mexico State '86)

Associate Head Coach:

Kyle Jamieson (3rd season • Brock University '97, Nipissing University '98)

Assistant Coach:

Courtney Breault (3rd season • Nebraska '13, Clemson '21)

Volunteer Assistant Coach:

Reese Jacobs (3rd season • Georgia Southern '79, Tennessee '81)

Graduate Assistant Coach:

Alyssa Bilodeau (1st season • Jacksonville '21)

Director of Operations:

Jeannie Murphy (3rd season • Oklahoma '10, Concordia University Irvine '14)

Student Manager:

Amanda Fitzwilliam (2nd season • Clemson '24)

Student Manager:

Anna Johnson (1st season • Clemson '23)

Student Manager:

Olivia Turpin (1st season • Clemson '24)

Associate AD/Sport Supervisor:

Natalie Honnen (3rd season • University of Florida '03 & '05)

Athletic Trainer:

Katie Rovtar (3rd season • University of Toledo '06, Virginia Tech '08)

Strength & Conditioning Coach:

Ryan Metzger (3rd season • University of Wisconsin-Oshkosh '11, University of Kentucky '15)

Athletic Communications Contact:

Valerie Johnson (1st season • Central Michigan '18)

Academic Advisor:

Kayla Velasquez (1st season • Bowling Green '17, Northwestern State '19)

Assistant Director of Equipment:

Ben Miller (3rd season • Clemson '16 & '18)

Supervisor of Athletic Grounds:

Mike Echols (3rd season • Clemson '85)

ALPHABETICAL

| # | Player | Pos. | Cl. |
|----|-------------------|---------|-------|
| 72 | Valerie Cagle | RHP/UTL | *So. |
| 19 | Jaden Cheek | INF/UTL | So. |
| 7 | McKenzie Clark | OF | So. |
| 1 | Rachel Gibson | RHP | Fr. |
| 77 | Hannah Goodwin | INF | *So. |
| 25 | Marissa Guimbarda | OF/UTL | *Sr. |
| 8 | Grace Hiller | INF/OF | Fr. |
| 5 | Ansley Houston | INF | So. |
| 9 | Sarah Howell | C/UTL | So. |
| 23 | JoJo Hyatt | C | **So. |
| 42 | Morgan Johnson | OF | *So. |
| 58 | Kyah Keller | INF | *So. |
| 16 | Alia Logoleo | OF | *So. |
| 27 | Grace Mattimore | C/UTL | *So. |
| 15 | Madison May | INF/OF | *So. |
| 2 | Brooke McCubbin | RHP/INF | Fr. |
| 28 | Maddie Moore | INF | Fr. |
| 24 | Arielle Oda | INF/OF | **So. |
| 12 | Cammy Pereira | INF/OF | **Sr. |
| 3 | Sam Russ | OF | +Gr. |
| 29 | Jaden Ruszkowski | INF | Fr. |
| 6 | Carlee Shannon | OF | **So. |
| 17 | Regan Spencer | RHP | So. |
| 13 | Abi Stuart | C/UTL | So. |
| 18 | Bailey Taylor | INF | *So. |
| 87 | Millie Thompson | LHP/INF | So. |
| 4 | Aby Vieira | C/UTL | Fr. |
| 11 | Haylee Whitesides | RHP/INF | Fr. |
| 10 | Emma Whitfield | RHP | *So. |

PRONUNCIATIONS

| # | Name | Pronunciation |
|----|-------------------|----------------------------|
| 4 | Aby Vieira | vee-AIR-uh |
| 12 | Cammy Pereira | puh-RAIR-uh |
| 16 | Alia Logoleo | lo-guh-LAY-oh |
| 21 | Jadeyn Ruszkowski | russ-COW-ski |
| 24 | Arielle Oda | OH-duh |
| 25 | Marissa Guimbarda | GUHM-bar-duh |
| 87 | Millie Thompson | MILL-ee |
| | Kyle Jamieson | pronounced like, "Jamison" |
| | Courtney Breault | BREE-ahit |
| | Katie Rovtar | ROHV-tahr |

* - one redshirt; + - transfer using extra year of eligibility granted due to Covid-19; Note: "Gr." denotes senior unless otherwise noted.

PRESEASON HONORS

#1 RACHEL GIBSON • RHP • FR.

- One of Top 75 Impact Freshmen by D1Softball.com

#2 BROOKE MCCUBBIN • RHP/INF • FR.

- Softball America ACC Top Newcomer to Watch

#7 MCKENZIE CLARK • OF • SO.

- Preseason All-ACC selection

#25 MARISSA GUIMBARDA • UTL • *GR.

- No. 91 on Extra Innings Softball's Extra Elite 100 List
- No. 82 on Softball America's 2022 Preseason College Top 100 list

#72 VALERIE CAGLE • RHP/UT • *SO.

- Preseason All-ACC selection
- USA Softball Collegiate Player of the Year Top 50 Watch List
- No. 6 on Extra Innings Softball's Extra Elite 100 list
- No. 19 on Softball America's 2022 Preseason College Top 100 list
- Preseason D1Softball.com ACC Player of the Year
- Preseason D1Softball.com First Team All-American
- Preseason Softball America First Team All-American
- D1Softball.com Preseason Top 10 Pitcher Power Rankings

CAREER MILESTONES

| Upcoming Milestone | Has | Needs |
|-----------------------------------|-------|-------|
| Marissa Guimbarda 60 home runs | *58 | 2 |
| Marissa Guimbarda 175 RBIs | *169 | 6 |
| Cammy Pereira 100 runs | *93 | 7 |
| Cammy Pereira 25 stolen bases | *23 | 2 |
| Sam Russ 175 runs | *151 | 24 |
| Sam Russ 125 stolen bases | *122 | 3 |
| Valerie Cagle 150 hits | 134 | 16 |
| Valerie Cagle 50 home runs | 36 | 14 |
| McKenzie Clark 100 runs | 76 | 24 |
| McKenzie Clark 50 stolen bases | 29 | 21 |
| Alia Logoleo 75 hits | 74 | 1 |
| Alia Logoleo 50 runs | 47 | 3 |
| JoJo Hyatt 75 hits | 51 | 24 |
| JoJo Hyatt 50 RBIs | 27 | 23 |
| Valerie Cagle 450 Innings Pitched | 410.2 | 39.1 |
| Valerie Cagle 500 strikeouts | 483 | 17 |
| Valerie Cagle 50 wins | 48 | 2 |
| Millie Thompson 150 strikeouts | 135 | 15 |
| Regan Spencer 50 strikeouts | 47 | 3 |

*Clemson and Previous School Combined

INDIVIDUAL RANKINGS

| Player | Category | NCAA/ACC | Value |
|-------------------|-------------------|-----------|-------|
| Team | Shutouts | 8/2 | 15 |
| Sam Russ | Triples | 13/1 | 4 |
| Team | ERA | 13/4 | 1.79 |
| Regan Spencer | ERA | 14/2 | 1.06 |
| Team | So/W Ratio | 20/3 | 3.93 |
| Millie Thompson | So/W Ratio | 26/3 | 7.00 |
| Valerie Cagle | Shutouts | 27/2 | 4 |
| Valerie Cagle | Saves | 27/4 | 2 |
| Brooke McCubbin | Saves | 27/4 | 2 |
| Millie Thompson | ERA | 29/5 | 1.26 |
| Sam Russ | Stolen Bases | 30/1 | 19 |
| Player | Category (Career) | Rank (D1) | Value |
| Sam Russ | Stolen Bases | 1 | 122 |
| Marissa Guimbarda | Home Runs | 5 | 58 |
| Sam Russ | Runs Scored | 27 | 151 |
| Valerie Cagle | Home Runs | 44 | 36 |

HEAD COACH JOHN RITTMAN



John Rittman, a longtime head coach and member of the USA Softball Women's National Team coaching pool, was named the first Head Coach of Clemson Softball on Nov. 3, 2017. Rittman came to Clemson after serving as the Associate Head Coach at the University of Kansas from 2015-17. Rittman joined the Jayhawks after 18 seasons as the Head Coach at Stanford University and 10 years on the United States National Team coaching staff (2001-08, 2016-18).

During the second season and first complete year, Rittman propelled Clemson to even higher heights by becoming the ACC Regular Season Champions after posting a 29-5 ACC record and winning seven ACC series, including six series sweeps. The Tigers were ACC Tournament Runner-Ups after shutting out both Georgia Tech and then-No. 20 Virginia Tech in the first two rounds before dropping the championship game, 1-0, to then-No. 21 Duke. Rittman was named ACC Coach of the Year and guided Valerie Cagle to being the first student-athlete in league history to be named both the ACC Freshman and Player of the Year in the same season. Clemson finished with six individuals earning nine All-ACC team selections following the regular season, including three on the first team. Cagle and freshman McKenzie Clark were named to the NFCA All-Region team. The honors continued to roll in for Cagle as she became the first Clemson softball All-American garnering second team honors from the NFCA, was a JWOS First Team All-American, a Top-Three Finalist for the NFCA's National Freshman of the Year and a Top-10 Finalist for USA Softball's Collegiate Player of the Year. Behind Rittman's efforts, Clemson climbed as high as No. 13 in the NFCA national rankings and No. 10 in the ESPN/USA Softball rankings before finishing the season at No. 18 in the NFCA poll. Rittman led the Tigers to their first postseason appearance traveling to the Tuscaloosa Regional to defeat Troy twice, including a five-inning run-rule victory in the opening game that capped off a historic second season.

In its inaugural season, Rittman transcended Clemson into a nationally-respected program. Rittman guided Clemson, which was predicted to finish in 10th in the conference, according to the 2020 ACC preseason poll, to a 19-8 overall record, including 5-1 in ACC play. The Tigers, who won both of their ACC series against Virginia and Pitt, won 11 of their final 12 games before the 2020 season was cut short due to the coronavirus pandemic (COVID-19). Additionally, Clemson went 14-2 at Clemson Softball Stadium (now McWhorter Stadium), which included a 13-game home win streak that spanned 25 days. Rittman and the Tigers generated plenty of enthusiasm among the Clemson faithful as the first-year program ranked fourth nationally in attendance (24,860) and fifth in average attendance (1,544/game) in 2020. On March 3, the National Fastpitch Coaches Association (NFCA) announced the first-year program received votes (10) in the fifth edition of the 2020 USA Today/NFCA D1 Top 25 Coaches Poll. The announcement came after Clemson defeated then-No. 14 Georgia, 4-1, on Feb. 26 at Clemson Softball Stadium before sweeping the Cavaliers to win its first-ever ACC series. Under the direction of Rittman, three Tigers in Valerie Cagle (twice), Marissa Guimbarda and Logan Caymol earned

ACC weekly honors on four occasions, the most by any ACC program in 2020. Cagle, a true freshman in 2020, was second in the nation in RBIs (36), while Guimbarda finished the season fourth nationally in home runs (11). Both Cagle and Guimbarda led the ACC in RBIs and home runs, respectively.

At Stanford, Rittman and the Cardinals recorded 18-consecutive winning seasons, made 16-straight NCAA appearances, notched 13 40-win seasons and produced at least one All-American in 15 of his last 17 seasons. As head coach, Rittman accumulated a 750-351-3 overall mark, coached a national player of the year, 16 All-Americans, earned five Super Regional appearances, two Women's College World Series appearances and maintained a spot in every regular-season NFCA top-25 poll for more than a decade.

Rittman served on the staff of the USA Softball team which won gold at both the 2016 Women's Softball World Championship and the 2017 Pan Am Qualifier. He also worked with Team USA from 2001-08, coaching the 2004 Olympic gold medal winners in Athens and the 2008 silver medalists in Beijing. Team USA also won gold medals at the 2002 and 2006 World Championship and the 2003 and 2007 Pan Am Games.

Prior to being named head coach at Stanford, Rittman spent four seasons as an assistant coach at the University of Washington, focusing on hitting and defense. Rittman helped start the program and, within just four seasons, the Huskies had earned a No. 1 national ranking, won the 1996 Pac-10 Championship, made three NCAA Tournament appearances and notched a runner-up finish in their first trip to the Women's College World Series. Washington became the first team since Texas A&M (1983) to advance to the championship game in its first appearance at the WCWS.

Before his appointment at Washington, Rittman spent two seasons as an assistant at the University of Minnesota. During his second year, the Golden Gophers won the Big Ten Conference with a 20-4 league record. The Gophers set team and individual records in almost every offensive category. The Minnesota squad led the nation in hits and total bases en route to a No. 15 national ranking. Rittman also helped produce two Golden Gopher All-Americans.

From 1988-90, Rittman was an assistant coach at the University of Oregon. During his stay, the Ducks played in the 1989 Women's College World Series, set several team and individual offensive records and produced an All-American.

Rittman graduated from New Mexico State with a degree in journalism in 1986. He was a three-year letterwinner in baseball as an outfielder at NMSU after transferring from Yavapai Junior College in Prescott, Arizona.

Rittman and his wife, Lorie, a former softball player at the University of Oklahoma, are the parents of Justin, a UCLA graduate and former fullback for the Bruins, and Jake, a senior punter at Notre Dame.

HEAD COACH JOHN RITTMAN

Education: Bachelor's degree in journalism at New Mexico State (1986).

Playing Experience: Three-year letterman at New Mexico State (1984-86).

Coaching Experience: Assistant Coach at Oregon (1988-90) ... Assistant Coach at Minnesota (1991-92) ... Assistant Coach at Washington (1993-96) ... Head Coach at Stanford (1997-2014) ... Associate Head Coach at Kansas (2015, 2017) ... Head Coach at Clemson (2020-present).

Family: Wife, Lorie Rittman ... sons, Justin and Jake.



RITTMAN'S HEAD COACHING RECORD

| Year | School | W-L | NCAA |
|-------|----------|---------|-----------------|
| 1997 | Stanford | 31-27-1 | |
| 1998 | Stanford | 41-18 | Regionals |
| 1999 | Stanford | 40-25 | Regionals |
| 2000 | Stanford | 45-18 | Regionals |
| 2001 | Stanford | 54-16-1 | World Series |
| 2002 | Stanford | 44-20 | Regionals |
| 2003 | Stanford | 41-26 | Regionals |
| 2004 | Stanford | 49-19 | World Series |
| 2005* | Stanford | 43-16 | Super Regionals |
| 2006 | Stanford | 42-18 | Super Regionals |
| 2007 | Stanford | 35-21-1 | Regionals |
| 2008 | Stanford | 49-15 | Super Regionals |
| 2009 | Stanford | 48-11 | Super Regionals |
| 2010 | Stanford | 37-19 | Regionals |
| 2011 | Stanford | 42-17 | Super Regionals |
| 2012 | Stanford | 40-19 | Regionals |
| 2013 | Stanford | 39-21 | Regionals |
| 2014 | Stanford | 30-25 | |
| 2020^ | Clemson | 19-8 | N/A |
| 2021* | Clemson | 44-8 | Regionals |
| 2022 | Clemson | 27-10 | |

* - conference champion; ^ - season suspended March 12 and later canceled due to a coronavirus (COVID-19) pandemic

RITTMAN'S HEAD COACHING RECORD

| School | Seasons | Years | W-L | Win % |
|---------------|-----------|---------------------------|------------------|-------------|
| Stanford | 18 | 1997-2014 | 750-351-3 | .681 |
| Clemson | 3 | 2020-22 | 90-26 | .771 |
| Totals | 21 | 1997-2014, 2020-22 | 840-377-3 | .688 |

RITTMAN VS. ACC AS CLEMSON HEAD COACH

| Team | Overall | Home | Away | Neutral |
|----------------|--------------|-------------|-------------|------------|
| Boston College | 4-0 | 4-0 | 0-0 | 0-0 |
| Duke | 3-6 | 2-2 | 1-2 | 0-2 |
| Florida State | 0-0 | 0-0 | 0-0 | 0-0 |
| Georgia Tech | 4-0 | 0-0 | 3-0 | 1-0 |
| Louisville | 6-1 | 2-1 | 4-0 | 0-0 |
| North Carolina | 7-0 | 4-0 | 3-0 | 0-0 |
| NC State | 4-0 | 4-0 | 0-0 | 0-0 |
| Notre Dame | 0-0 | 0-0 | 0-0 | 0-0 |
| Pittsburgh | 2-1 | 2-1 | 0-0 | 0-0 |
| Syracuse | 3-1 | 0-0 | 3-1 | 0-0 |
| Virginia | 7-0 | 3-0 | 4-0 | 0-0 |
| Virginia Tech | 2-5 | 1-5 | 0-0 | 1-0 |
| Totals | 42-14 | 22-9 | 18-3 | 2-2 |

Note: Clemson's neutral-site games against Duke (Feb. 7, 2020) was not considered an ACC contest towards the league's standings.

2022 BROADCAST SHEET

1



RACHEL GIBSON

Fr. • RHP • 5-9 • Ringgold, Ga. • Heritage HS

| | ERA | W-L | APP | CG | SHO | IP | SO |
|--------|-------|-----|-----|----|-----|-----|----|
| 2022 | 99.00 | 0-0 | 1 | 0 | 0/0 | 0.0 | 0 |
| Career | 99.00 | 0-0 | 1 | 0 | 0/0 | 0.0 | 0 |

Season Highs: NP (22)

- Made first collegiate appearance against Akron
- D1 Softball Preseason Top 75 Impact Freshmen selection
- Prior to Clemson:
 - Two time GHSA 4A State Champion (2018, 2019)
 - Two time GHSA 4A Pitcher of the Year (2018, 2019)
 - Two time Best of Preps Softball Player of the Year (2018, 2019)
 - 2019 Georgia Dugout Club 4A Player of the Year

2



BROOKE McCUBBIN

Fr. • RHP/INF • 5-10 • Locust Grove, Ga. • Locust Grove HS

| | ERA | W-L | APP | CG | SHO | IP | SO |
|--------|------|-----|-----|----|-----|------|----|
| 2022 | 1.72 | 4-2 | 15 | 0 | 0/6 | 36.2 | 21 |
| Career | 1.72 | 4-2 | 15 | 0 | 0/6 | 36.2 | 21 |

Season Highs: IP (5.1), SO (5), NP (110)

- Pitched season-high 5.1 innings vs. Northwestern
- Season-high five strikeouts vs. Winthrop
- Earned first collegiate save vs. Mercer and second at UNC
- Prior to Clemson:
 - 2020 Georgia Softball Player of the Year
 - 2019 GACA State Pitcher of the Year
 - 2019 GADC State 5A Player of the Year

3



SAM RUSS

+Gr. • OF • 5-8 • Charlotte, N.C. • NC State (Providence Day HS)

| | AVG | AB | RUNS | HITS | RBI | BB | SB |
|--------|------|-----|------|------|-----|----|-----|
| 2022 | .298 | 104 | 24 | 31 | 9 | 18 | 19 |
| Career | .316 | 605 | 151 | 191 | 63 | 98 | 122 |

Season Highs: R (3), RBI (2, 2x), 3B (1, 4x), SB (2, 4x)

- Finished with three hits and two RBIs against LIU
- Had a sac fly and one hit vs. Virginia Tech on March 6
- Has 122 stolen bases to lead the active NCAA D1 players in career stolen bases
- Prior to Clemson:
 - Spent four seasons at NC State
 - Holds NC State's all-time record for career stolen bases (103) and single season record for stolen bases (32)

4



ABY VIEIRA (VEE-AIR-UH)

Fr. • C/UTL • 5-9 • Mission Viejo, Calif. • Mission Viejo HS

| | AVG | AB | RUNS | HITS | RBI | BB | SB |
|--------|------|----|------|------|-----|----|----|
| 2022 | .312 | 48 | 8 | 15 | 9 | 2 | 0 |
| Career | .312 | 48 | 8 | 15 | 9 | 2 | 0 |

Season Highs: H (2, 4x), RBI (4), R (1, 8x), HR (1, 3x)

- Made first appearance behind the plate since VT series in final game vs. Louisville
- Caught Spencer's and Thompson's combined no-hitter vs. Kent State
- Starting catcher in Clemson's upset over Washington
- Recorded first collegiate grand slam (and homer) against Akron
- Hit walk off single against Louisville on March 26 for run-rule victory
- Hit two home runs in series at North Carolina
- Appeared in a total of 21 games this season

5



ANSLEY HOUSTON

So. • INF • 5-6 • Grantville, Ga. • Newnan HS

| | AVG | AB | RUNS | HITS | RBI | BB | SB |
|--------|------|----|------|------|-----|----|----|
| 2022 | .000 | 0 | 8 | 0 | 0 | 0 | 1 |
| Career | .000 | 1 | 8 | 0 | 0 | 0 | 1 |

Season Highs: R (1, 8x), SB (1)

- Has appeared as a pinch runner in 19 games this season
- First collegiate stolen base against Virginia Tech (March 5)
- Scored her first collegiate run against Boston University on Feb. 25
- ACC Academic Honor Roll (2021)
- Prior to Clemson:
 - Set Newnan's home run (12) and RBI (42) single season records in 2019
 - Three time All-Region First Team (2016-18)

6



CARLEE SHANNON

**So. • OF • 5-7 • Chester, S.C. • York Comprehensive HS

| | AVG | AB | RUNS | HITS | RBI | BB | SB |
|--------|------|----|------|------|-----|----|----|
| 2022 | .000 | 0 | 9 | 0 | 0 | 0 | 12 |
| Career | .000 | 0 | 32 | 0 | 0 | 1 | 39 |

Season Highs: R (1, 9x), SB (1, 12x)

- Appeared in 30 games in 2022 as a pinch runner
- Held a 19 stolen-base consecutive streak that ended in Clearwater, Fla. that began last season.
- Led the team in stolen-base percentage in 2021 (18-for-18)
- Her 18 stolen bases in 2021 were good for second on the team and tied for 10th in the ACC
- Started playing softball in high school after a career-ending gymnastics injury

7



McKENZIE CLARK

So. • OF • 5-5 • Myakka City, Fla. • Lakewood Ranch HS

| | AVG | AB | RUNS | HITS | RBI | BB | SB |
|--------|------|-----|------|------|-----|----|----|
| 2022 | .306 | 111 | 29 | 34 | 17 | 16 | 6 |
| Career | .336 | 280 | 76 | 94 | 46 | 35 | 29 |

Season Highs: R (4), H (4), RBI (2, 4x) 2B (2), SB (1, 6x)

- Scored four runs off two hits with two RBIs at FGCU
- Recorded Clemson's first inside the park home run against Akron
- Went 4-for-4 against Akron with one stolen base
- Hit two home runs in the same game against Louisville (March 26)
- Went 3-for-4 against South Carolina on March 30 with a home run
- 2022 Preseason All-ACC selection
- NFCA All-Region Southeast selection

8



GRACE HILLER

Fr. • INF/OF • 5-9 • Macon, Ga. • Tattal Square Academy

| | AVG | AB | RUNS | HITS | RBI | BB | SB |
|--------|-----|----|------|------|-----|----|----|
| 2022 | - | - | - | - | - | - | - |
| Career | - | - | - | - | - | - | - |

Season Highs:

- Prior to Clemson:
 - First Team All-7A Region
 - Led her HS in batting average, doubles and runs scored
 - Set HS single season batting average record (.515) in 2020
 - Selected for the Georgia Dugout Club Senior All-State Game

2022 BROADCAST SHEET

9



SARAH HOWELL

So. • C/UTL • 5-4 • Oxford, Ala. • Oxford HS

| | AVG | AB | RUNS | HITS | RBI | BB | SB |
|--------|------|----|------|------|-----|----|----|
| 2022 | - | - | - | - | - | - | - |
| Career | .083 | 12 | 5 | 1 | 0 | 0 | 4 |

Season Highs:

- Out during 2022 season due to injury
- Appeared in 23 games in 2021
- Scored the Tigers' game-winning run in the Tigers' 5-4 win at Georgia Tech

10



EMMA WHITFIELD

**So.* • RHP • 5-9 • Toccoa, Ga. • Stephens County HS

| | ERA | W-L | APP | CG | SHO | IP | SO |
|--------|------|-----|-----|----|-----|------|----|
| 2022 | 7.00 | 0-0 | 1 | 0 | 0 | 1.0 | 1 |
| Career | 3.54 | 4-0 | 16 | 1 | 0 | 29.2 | 26 |

Season Highs: IP (1.0), NP (20)

- Made first appearance of 2022 against Akron
- Appeared in four games in 2021
- Registered a 3.94 ERA in 5.1 innings pitched
- Two time ACC Academic Honor Roll
- Earned the program's first-ever conference win in the circle against Virginia (Feb. 28, 2020)

11



HAYLEE WHITESIDES

Fr. • RHP/INF • 5-5 • Duncan, S.C. • Byrnes HS

| | ERA | W-L | APP | CG | SHO | IP | SO |
|--------|-----|-----|-----|----|-----|----|----|
| 2022 | - | - | - | - | - | - | - |
| Career | - | - | - | - | - | - | - |

Season Highs:

- Prior to Clemson:
- Two time South Carolina 5A State Champion (2017, 2021)
- Two time member of the Spartanburg Herald Journal All-Area Team (2018, 2019)

12



CAMMY PEREIRA (PUH-RAYR-UH)

***Gr.* • INF/OF • 5-6 • Winston-Salem, N.C. • Furman (West Forsyth HS)

| | AVG | AB | RUNS | HITS | RBI | BB | SB |
|--------|------|-----|------|------|-----|----|----|
| 2022 | .305 | 105 | 20 | 32 | 12 | 9 | 1 |
| Career | .305 | 544 | 93 | 166 | 60 | 24 | 23 |

Season Highs: R (2, 3x), H (3, 4x), HR (1, 2x), 2B (1, 5x), RBI (3)

- Hit Clemson first home run of the 2022 season at FGCU
- Hit a solo home run at Georgia in the second inning
- Talled three RBIs off two hits vs. Kent State
- Hit two homers against Georgia Tech (May 13, 2021) in the quarterfinals of the ACC Championship in the Tigers' first postseason win in program history
- Has four games with three hits including Charlotte, Boston U, Liberty and Duke
- Is a Weaver-James-Corrigan postgraduate scholarship award recipient (2022)

13



ABI STUART

**So.* • C/UTL • 5-9 • Snow Camp, N.C. • Southern Alamance HS

| | AVG | AB | RUNS | HITS | RBI | BB | SB |
|--------|------|-----|------|------|-----|----|----|
| 2022 | .000 | 4 | 1 | 0 | 0 | 2 | 0 |
| Career | .243 | 107 | 15 | 26 | 19 | 9 | 0 |

Season Highs: R (1), BB (1, 2x)

- Has appeared in five games in 2022 (DP in 2, PR in 1, PH 2)
- Scored one run against Kent State and drew a walk at FGCU
- Played in 36 games, starting in 31 in 2021
- Hit .259 in 85 at bats with 10 runs and a .447 slugging percentage
- Posted an eight-game hitting streak, the third longest streak by any Tiger on the season
- Two time ACC Academic Honor Roll recipient

15



MADISON MAY

**So.* • INF/OF • 5-9 • Valdosta, Ga. • Lowndes HS

| | AVG | AB | RUNS | HITS | RBI | BB | SB |
|--------|------|----|------|------|-----|----|----|
| 2022 | .217 | 23 | 2 | 5 | 4 | 7 | 0 |
| Career | .156 | 32 | 2 | 5 | 4 | 8 | 0 |

Season Highs: AB (4), H (2), R (1, 2x), RBI (2), BB (2, 2x)

- Hit a RBI double against Charlotte
- Went 1-for-1 with a double, two RBIs, two walks and one run scored against Texas Tech
- Finished with two hits against Wisconsin
- Recorded first career hit and run against LIU
- Two time ACC Academic Honor Roll recipient
- Reached base on four-straight balls in only plate appearance of the 2021 season

16



ALIA LOGOLEO (LO-GUH-LAY-OH)

**So.* • INF/OF • 5-8 • Nashville, Tenn. • Hillsboro HS

| | AVG | AB | RUNS | HITS | RBI | BB | SB |
|--------|------|-----|------|------|-----|----|----|
| 2022 | .280 | 100 | 18 | 28 | 30 | 8 | 2 |
| Career | .288 | 257 | 47 | 74 | 67 | 23 | 16 |

Season Highs: R (2, 3x), H (3, 2x), 2B (2), HR (2), RBI (8)

- Started at either SS or 3B every game this season
- Talled 11 RBIs in North Carolina series off three homers in three games
- Talled her fifth home run against South Carolina on March 30
- Hit a walk-off home run against Boston University
- Hit a two-run homer to open scoring against Louisville on March 26
- Hit two grand slams in 2021 (only player to record a grand slam last year)
- Hit a grand slam, a three-run homer, a two-run homer and a double at Syracuse

17



REGAN SPENCER

So. • RHP • 5-11 • Lexington, N.C. • North Davidson HS

| | ERA | W-L | APP | CG | SHO | IP | SO |
|--------|------|------|-----|----|-----|------|----|
| 2022 | 1.06 | 4-0 | 13 | 1 | 1/4 | 39.2 | 27 |
| Career | 1.28 | 10-0 | 27 | 3 | 2/5 | 82.1 | 47 |

Season Highs: IP (7.0), SO (7), NP (84)

- Has four victories in the circle this season
- Allowed first runs of 2022 against Liberty
- Threw Clemson's first combined no-hitter with Millie Thompson vs. Kent State
- Second in the ACC with a 1.06 ERA
- Pitched 3.0 innings with four strikeouts against Kent State to earn the win
- Struck out three batters in 1.2 innings of work against Northwestern
- Earned the victory against Gardner-Webb after pitching 2.0 innings efficiently

2022 BROADCAST SHEET

18



BAILEY TAYLOR

*Gr. • INF • 5-7 • Winnsboro, S.C. • Troy (Richard Winn Academy)

| | AVG | AB | RUNS | HITS | RBI | BB | SB |
|--------|------|-----|------|------|-----|----|----|
| 2022 | .316 | 19 | 0 | 6 | 2 | 2 | 0 |
| Career | .285 | 228 | 26 | 65 | 65 | 23 | 1 |

Season Highs: H (2), HPB (2), RBI (1, 2x), BB (2)

- Has started in nine games this season and appeared in 18
- Had two hits vs. Liberty on March 13
- Tallied an RBI vs. Illinois and Liberty at the Tiger Invitational
- Missed 2021 season due to injury
- Recorded a grand slam against Maryland helping Clemson become just the seventh program in NCAA Division I history to record two grand slams in a single inning

19



JADEN CHEEK

So. • INF/UTL • 5-9 • Carnesville, Ga. • Franklin County HS

| | AVG | AB | RUNS | HITS | RBI | BB | SB |
|--------|------|----|------|------|-----|----|----|
| 2022 | - | - | 1 | - | - | - | 1 |
| Career | .100 | 10 | 12 | 1 | 0 | 0 | 3 |

Season Highs: R (1), SB (1)

- Has appeared in four games in 2022 as a pinch runner
- Scored first run of 2022 at North Carolina
- Stole first base of 2022 season vs. Furman
- Appeared in 39 games in 2021
- Made first career start as the Tigers' designated player against Furman
- Recorded first career hit on a single to right field against Furman

21



JADEYN RUSZKOWSKI (RUSS-COW-SKI)

Fr. • INF • 5-8 • Lithia, Fla. • Newsome HS

| | AVG | AB | RUNS | HITS | RBI | BB | SB |
|--------|-----|----|------|------|-----|----|----|
| 2022 | - | - | - | - | - | - | - |
| Career | - | - | - | - | - | - | - |

Season Highs:

- Prior to Clemson:
- Two time District Champion
- Member of the 9A First Team All-State as a designated player
- Had a batting average of .652 as a junior in HS

23



JOJO HYATT

**So. • C • 5-8 • Buford, Ga. • Buford HS

| | AVG | AB | RUNS | HITS | RBI | BB | SB |
|--------|------|-----|------|------|-----|----|----|
| 2022 | .218 | 55 | 1 | 12 | 6 | 5 | 0 |
| Career | .242 | 211 | 16 | 51 | 27 | 18 | 0 |

Season Highs: H (2, 2x), 3B (1), RBI (3), BB (1, 5x) PO (13)

- Has appeared in 26 games this season
- Hit the walk-off triple to run-rule Texas Tech to open the SPCEI with three RBIs
- Brought in two runners in Clemson's 4-3 win over Tennessee
- Started 50 games at catcher in 2021
- Hit .223 with four runs, a .266 slugging percentage and .291 on-base percentage
- Hit first career home run at Virginia (Mar. 7, 2021)
- Two time ACC Academic Honor Roll recipient

24



ARIELLE ODA (OH-DUH)

**So. • INF/OF • 5-4 • Buford, Ga. • Buford HS

| | AVG | AB | RUNS | HITS | RBI | BB | SB |
|--------|------|----|------|------|-----|----|----|
| 2022 | .333 | 18 | 10 | 6 | 2 | 4 | 4 |
| Career | .237 | 38 | 32 | 9 | 6 | 11 | 9 |

Season Highs: R (2), AB (3), H (1, 6x), SB (1, 4x)

- Made a catch at the wall in right field and hit a single vs. Virginia Tech (3/6)
- Has appeared in 33 games this season
- Hit first career homer vs. Furman
- Appeared in 46 games, including 14 starts in 2021
- Two time ACC Academic Honor Roll member
- Scored one of four runs in the sixth inning in the Tigers' 5-3 comeback win at Virginia (Mar. 6, 2021)

25



MARISSA GUIMBARDA (GUHM-BAR-DUH)

*Gr. • OF/UTL • 5-6 • Suwanee, Ga. • Furman (Lambert HS)

| | AVG | AB | RUNS | HITS | RBI | BB | SB |
|--------|------|-----|------|------|-----|----|----|
| 2022 | .308 | 104 | 15 | 32 | 32 | 18 | 1 |
| Career | .310 | 546 | 83 | 169 | 169 | 82 | 3 |

Season Highs: R (2, 4x), H (3, 2x), RBI (5), BB (2, 5x)

- Recorded the hit that scored the first run in Clemson's win over Washington
- Hit her 58th career home run to become the 196th player in D1 history to accomplish surpassing 50 HR in her career and sits fifth on the NCAA career home run list for active players
- Is a Weaver-James-Corrigan postgraduate scholarship award recipient (2021)
- No. 91 preseason player by Extra Innings Softball and No. 86 by Softball America
- Senior CLASS Award top-30 selection

27



GRACE MATTIMORE

*Gr. • C/UTL • 5-7 • Ashburn, Va. • Army West Point (Broad Run HS)

| | AVG | AB | RUNS | HITS | RBI | BB | SB |
|--------|------|-----|------|------|-----|----|----|
| 2022 | .167 | 6 | 1 | 1 | 0 | 2 | 0 |
| Career | .274 | 259 | 41 | 71 | 44 | 58 | 1 |

Season Highs: AB (2), 2B (1), R (1), BB (1, 2x)

- Recorded a double and scored vs. Virginia Tech on March 6
- Had sac bunt to spur Clemson's eight-run inning at Duke on March 19
- Drew a walk as a pinch hitter vs. Mercer
- Played left field and had two at bats vs. Gardner-Webb
- Started in 40 games in 2021
- Is a Weaver-James-Corrigan postgraduate scholarship award recipient
- Hit .333 in 66 at bats in 2020 and led the ACC with 10 doubles

28



MADDIE MOORE

Fr. • INF • 5-7 • Loomis, Calif. • Del Oro HS

| | AVG | AB | RUNS | HITS | RBI | BB | SB |
|--------|------|----|------|------|-----|----|----|
| 2022 | .190 | 58 | 15 | 11 | 6 | 10 | 5 |
| Career | .190 | 58 | 15 | 11 | 6 | 10 | 5 |

Season Highs: R (2, 2x), H (1, 11x), BB (2), SB (1, 5x)

- Has started in 36 games this season
- Recorded a hit and a run at FGCU on opening day
- Tallied a RBI single against South Carolina on March 30
- Scored the winning run for Clemson vs. Tennessee and the first run for Clemson against Washington
- Hit first career home run against Boston University on 2/26 and second at North Carolina on 4/2

2022 BROADCAST SHEET

42



MORGAN JOHNSON

*So. • OF • 6-1 • Evans, Ga. • Evans HS

| | AVG | AB | RUNS | HITS | RBI | BB | SB |
|--------|------|----|------|------|-----|----|----|
| 2022 | - | - | - | - | - | - | - |
| Career | .288 | 52 | 9 | 15 | 18 | 8 | 4 |

Season Highs:

- Out during 2022 season due to injury
- Read her "My Story" feature on ClemsonTigers.com - Johnson penned a letter to Jackie Robinson for Black History Month - will be feature on Sportscenter in April
- Appeared in 30 games in 2021 and hit .350 in 40 at bats with a .725 slugging percentage
- Two time ACC Academic Honor Roll recipient
- Member of Clemson's POWER - a Women's Leadership Academy

58



KYAH KELLER

*So. • INF • 6-0 • Hollywood, Ala. • Battle Ground Academy

| | AVG | AB | RUNS | HITS | RBI | BB | SB |
|--------|------|-----|------|------|-----|----|----|
| 2022 | .208 | 48 | 1 | 10 | 9 | 5 | 0 |
| Career | .234 | 141 | 8 | 33 | 26 | 11 | 0 |

Season Highs: H (2), RBI (2, 2x), BB (1, 5x)

- Pinch hit a RBI single against LIU to spur Clemson's eight-inning scoring run in the sixth
- Had a walk off pinch hit single vs. Liberty to bring in two runners
- Hit .256 in 90 at bats with six runs and a .367 slugging percentage in 2021
- Recorded two homers in CU's 12-1 win against North Carolina while going 3-for-3 with a career-best four RBI
- Two time ACC Academic Honor Roll member

72



VALERIE CAGLE

*So. • RHP/UTL • 5-9 • Yorktown, Va. • Homeschooled

| | AVG | AB | RUNS | HITS | RBI | BB | SB |
|--------|------|-----|------|------|-----|----|----|
| 2022 | .308 | 117 | 24 | 36 | 32 | 13 | 0 |
| Career | .366 | 366 | 93 | 134 | 113 | 46 | 5 |

Season Highs: H (3, 2x), R (2, 5x), RBI (6), HR (2), HBP (1)

| | ERA | W-L | APP | CG | SHO | IP | SO |
|--------|------|-------|-----|----|------|-------|-----|
| 2022 | 2.21 | 11-7 | 21 | 10 | 4/3 | 104.1 | 129 |
| Career | 1.65 | 48-20 | 80 | 44 | 15/5 | 410.2 | 483 |

Season Highs: IP (9.0), H (9), SO (13), BB (3, 4x)

- Tallied three hits and six RBIs at FGCU - including her first homer of the season
- Struck out 10 batters and hit a solo home run in Clemson's 2-0 upset over Washington
- Hit two home runs vs. Winthrop with four RBIs
- Has recorded 36 hits, nine home runs and holds a .573 slugging percentage
- Has pitched 104.1 innings with 129 strikeouts
- Preseason All-ACC selection and D1 Softball Preseason First Team All-American
- Pitched two complete-game no-hitters in 2021 in 6-0 win against Boston College and 9-0 win against Winthrop
- Joined Team USA's U-18 Junior Women's National Team

77



HANNAH GOODWIN

**Fr. • INF • 5-8 • West Columbia, S.C. • White Knoll HS

| | AVG | AB | RUNS | HITS | RBI | BB | SB |
|--------|------|----|------|------|-----|----|----|
| 2022 | .000 | 5 | 0 | 0 | 0 | 0 | 0 |
| Career | .341 | 87 | 15 | 30 | 16 | 5 | 1 |

Season Highs: AB (2)

- Made first appearance in 2022 as a pinch hitter vs. Charlotte
- Had one plate appearance against Gardner-Webb and Mercer
- Made first start in 2022 against UNC
- Missed 2021 season due to injury
- ACC Academic Honor Roll selection
- Started 26 games at shortstop in 2020
- Led the 2020 team with a .385 average during the shortened COVID season

87



MILLIE THOMPSON (MILL-EE)

So. • LHP/INF • 5-9 • Bedford, Va. • Liberty HS

| | ERA | W-L | APP | CG | SHO | IP | SO |
|--------|------|------|-----|----|-----|-------|-----|
| 2022 | 1.26 | 8-1 | 15 | 5 | 3/5 | 61 | 65 |
| Career | 1.70 | 17-2 | 34 | 8 | 3/7 | 139.2 | 135 |

Season Highs: IP (7.0, 3x), H (7, 2x), SO (11), NP (103)

- Threw her first solo no-hitter vs. Furman in five innings
- Struck out eight batters without giving up a walk in Clemson's 10-2 run-rule victory over Duke and struck out nine against Louisville the next week
- Threw Clemson's first combined no-hitter with Regan Spencer vs. Kent State
- Struck out a career-high 11 batters vs. Illinois
- Underwent successful surgery in December to correct a left forearm compartment syndrome injury

QUICK FACTS

| | |
|---------------------------|---|
| Nickname | Tigers |
| Location | Clemson, S.C. 29633 |
| Colors | Clemson Orange & Regalia |
| Founded | 1889 |
| Enrollment | 27,341 |
| President | Dr. James P. Clements (Maryland-Baltimore County '85) |
| Director of Athletics | Graham Neff (Georgia Tech '06) |
| Conference | Atlantic Coast Conference |
| Facility (Capacity) | McWhorter Stadium (1,616) |
| Year Opened | 2020 |
| Dimensions | LF - 200, CF - 220, RF - 205 |
| Record Crowd | 1,616 |
| Head Coach | John Rittman (New Mexico State '86) |
| Record at Clemson | 90-26 (3 rd season) |
| Overall Record | 840-377-3 (21 st season) |
| Associate Head Coach | Kyle Jamieson (Brock '97 & Nipissing '98) |
| Assistant Coach | Courtney Breault (Nebraska '13, Clemson '21) |
| Volunteer Assistant Coach | Reese Jacobs (Georgia Southern '79) |
| Director of Operations | Jeannie Murphy (Oklahoma '10, Concordia '14) |
| Graduate Assistant | Alyssa Bilodeau (Jacksonville '21) |
| Athletic Trainer | Katie Rovtar (Toledo '06 & Virginia Tech '08) |
| Strength Coach | Ryan Metzger (Wisconsin-Oshkosh '11 & Kentucky '15) |
| Sport Administrator | Natalie G. Honnen (Florida '03 & '05) |
| First Year of Softball | 2020 |
| Season of Softball | Third |

ACC STANDINGS

| SCHOOL | CONF | CPCT. | OVERALL | PCT. | STREAK |
|----------------|------|-------|---------|------|--------|
| Virginia Tech | 11-0 | 1.000 | 27-4 | .871 | L1 |
| Duke | 11-2 | .846 | 29-5 | .853 | W6 |
| Florida State | 10-2 | .833 | 35-2 | .946 | W9 |
| Notre Dame | 7-3 | .700 | 28-7 | .800 | W3 |
| Virginia | 8-4 | .667 | 22-16 | .579 | W1 |
| Clemson | 6-6 | .500 | 27-10 | .730 | W6 |
| Georgia Tech | 6-9 | .400 | 25-11 | .694 | L2 |
| NC State | 5-10 | .333 | 26-13 | .667 | W2 |
| North Carolina | 4-8 | .333 | 19-18 | .514 | L4 |
| Louisville | 3-6 | .333 | 19-15 | .559 | L1 |
| Syracuse | 3-8 | .273 | 19-12 | .613 | W2 |
| Boston College | 2-10 | .167 | 15-17 | .469 | W1 |
| Pitt | 1-9 | .100 | 13-16 | .448 | W1 |

2022 TV ROSTER



1
RACHEL GIBSON
Fr. - RHP



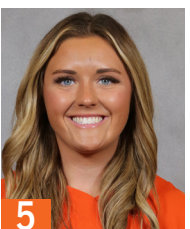
2
BROOKE McCUBBIN
Fr. - RHP/INF



3
SAM RUSS
+Gr. - OF



4
ABY VIEIRA
Fr. - C/UTL



5
ANSLEY HOUSTON
So. - INF



6
CARLEE SHANNON
**So. - OF



7
MCKENZIE CLARK
So. - OF



8
GRACE HILLER
Fr. - INF/OF



9
SARAH HOWELL
So. - C/UTL



10
EMMA WHITFIELD
*So. - RHP



11
HAYLEE WHITESIDES
Fr. - RHP/INF



12
CAMMY PEREIRA
**Gr. - INF/OF



13
ABI STUART
*So. - C/UTL



15
MADISON MAY
*So. - OF/INF



16
ALIA LOGOLEO
*So. - OF/INF



17
REGAN SPENCER
So. - RHP



18
BAILEY TAYLOR
*Gr. - INF



19
JADEN CHEEK
So. - INF/OF



21
JADEYN RUSZKOWSKI
Fr. - INF



23
JoJo HYATT
**So. - C



24
ARIELLE ODA
**So. - OF/INF



25
MARISSA GUIMBARDA
*Gr. - UTL



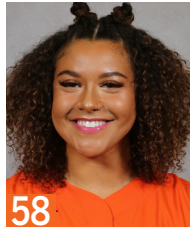
27
GRACE MATTIMORE
*Gr. - C/UTL



28
MADDIE MOORE
Fr. - INF



42
MORGAN JOHNSON
*So. - OF



58
KYAH KELLER
*So. - INF



72
VALERIE CAGLE
*So. - RHP/UTL



77
HANNAH GOODWIN
**Fr. - INF



87
MILLIE THOMPSON
So. - LHP



HC
JOHN RITTMAN
3rd Season



AC
KYLE JAMIESON
3rd Season



AC
COURTNEY BREAUT
3rd Season



VC
REESE JACOBS
3rd Season



GA
ALYSSA BIODEAU
1st Season



DO
JEANNIE MURPHY
3rd Season

PLAYER HIGHS

#1 RACHEL GIBSON

| Career (Last) | Category | 2022 |
|---------------|-----------------|----------------|
| Same | IP | |
| Same | Runs Allowed | 4 (Akron 2/26) |
| | Earned Runs | 3 (Akron 2/26) |
| | Walks Issued | |
| | Strikeouts | |
| Same | Hits Allowed | 1 (Akron 2/26) |
| | Doubles Allowed | |
| | Triples Allowed | |
| | Homers Allowed | |

#2 BROOKE McCUBBIN

| Career (Last) | Category | 2022 |
|---------------|-----------------|----------------------------|
| Same | IP | 5.1 (vs Northwestern 2/19) |
| Same | Runs Allowed | 7 (vs Northwestern 2/19) |
| Same | Earned Runs | 5 (at Duke 3/20) |
| Same | Walks Issued | 2, 4x (at Duke 3/20) |
| Same | Strikeouts | 5 (Winthrop 3/15) |
| Same | Hits Allowed | 9 (vs Northwestern 2/19) |
| Same | Doubles Allowed | 1, 4x (at Duke 3/20) |
| Same | Triples Allowed | |
| Same | Homers Allowed | 1 (vs Northwestern 2/19) |

#3 SAM RUSS

| Career (Last) | Category | 2022 |
|---------------|--------------|-------------------------------|
| Same | Runs | 3 (at North Carolina 4/1) |
| Same | Hits | 3 (vs LIU 2/12) |
| Same | RBI | 2, 2x (at Duke 3/19) |
| Same | Doubles | 1, 4x (at North Carolina 4/1) |
| Same | Triples | 1, 4x (at Duke 3/19) |
| Same | Home Runs | 1, 2x (at Duke 3/20) |
| Same | Walks | 2, 4x (at North Carolina 4/3) |
| Same | HBP | 2 (at North Carolina 4/2) |
| Same | Stolen Bases | 2, 4x (Liberty 3/14) |

#4 ABY VIEIRA

| Career (Last) | Category | 2022 |
|---------------|--------------|-------------------------------|
| Same | Runs | 1, 8x (Furman 4/6) |
| Same | Hits | 2, 4x (Furman 4/6) |
| Same | RBI | 4 (Akron 2/26) |
| Same | Doubles | 1 (at Charlotte 2/23) |
| | Triples | |
| | Home Runs | 1, 3x (at North Carolina 4/3) |
| Same | Walks | 1, 2x (Akron 2/26) |
| | HBP | |
| | Stolen Bases | |

#5 ANSLEY HOUSTON

| Career (Last) | Category | 2022 |
|---------------|--------------|-----------------------------|
| Same | Runs | 1, 8x (South Carolina 3/30) |
| - | Hits | |
| - | RBI | |
| - | Doubles | |
| - | Triples | |
| - | Home Runs | |
| - | Walks | |
| - | HBP | |
| Same | Stolen Bases | 1 (Virginia Tech 3/5) |

#6 CARLEE SHANNON

| Career (Last) | Category | 2022 |
|------------------------|--------------|---------------------|
| 1, 32x (Furman 4/6/22) | Runs | 1, 9x (Furman 4/6) |
| - | Hits | |
| - | RBI | |
| - | Doubles | |
| - | Triples | |
| - | Home Runs | |
| - | Walks | |
| - | HBP | |
| 2 (Winthrop 4/13/21) | Stolen Bases | 1, 12x (Furman 4/6) |

#7 McKENZIE CLARK

| Career (Last) | Category | 2022 |
|----------------------------------|--------------|-------------------------------|
| 4 (at FGCU 2/10) | Runs | 4 (at FGCU 2/10) |
| 4 (Akron 2/26/22) | Hits | 4 (Akron 2/26) |
| 3, 2x (North Carolina 4/3/21) | RBI | 2, 4x (Louisville 3/26) |
| 2, 3x (Mercer 3/9/22) | Doubles | 2 (Mercer 3/9) |
| 1, 8x (Virginia Tech 3/5/22) | Triples | 1, 2x (Virginia Tech 3/5) |
| 2 (Louisville 3/26/22) | Home Runs | 2 (Louisville 3/26) |
| 2, 5x (at North Carolina 4/3/22) | Walks | 2, 3x (at North Carolina 4/3) |
| 1, 11x (Furman 4/6/22) | HBP | 1, 6x (Furman 4/6) |
| 3 (Elon 2/27/21) | Stolen Bases | 1, 6x (Furman 4/6) |

#8 GRACE HILLER

| Career (Last) | Category | 2022 |
|---------------|--------------|------|
| | Runs | |
| | Hits | |
| | RBI | |
| | Doubles | |
| | Triples | |
| | Home Runs | |
| | Walks | |
| | HBP | |
| | Stolen Bases | |

#9 SARAH HOWELL

| Career (Last) | Category | 2022 |
|-------------------------------|--------------|------|
| 1, 5x (North Carolina 4/3/21) | Runs | |
| 1 (at North Florida 2/12/21) | Hits | |
| - | RBI | |
| - | Doubles | |
| - | Triples | |
| - | Home Runs | |
| - | Walks | |
| - | HBP | |
| 2 (at Virginia 3/7/21) | Stolen Bases | |

#10 EMMA WHITFIELD

| Career (Last) | Category | 2022 |
|--------------------------|-----------------|------------------|
| 5.0 (Charlotte 3/4/20) | IP | 1.0 (Akron 2/26) |
| 3 (vs St. John's 2/9/20) | Runs Allowed | 1 (Akron 2/26) |
| 3 (vs St. John's 2/9/20) | Earned Runs | 1 (Akron 2/26) |
| 3 (Pittsburgh 3/7/20) | Walks Issued | |
| 3, 4x (Furman 3/13/21) | Strikeouts | 1 (Akron 2/26) |
| 5 (Charlotte 3/4/20) | Hits Allowed | 2 (Akron 2/26) |
| 2 (Maryland 2/15/20) | Doubles Allowed | |
| 1 (Akron 2/26/22) | Triples Allowed | 1 (Akron 2/26) |
| 1, 5x (Winthrop 4/13/21) | Homers Allowed | |

#11 HAYLEE WHITESIDES

| Career (Last) | Category | 2022 |
|---------------|-----------------|------|
| | IP | |
| | Runs Allowed | |
| | Earned Runs | |
| | Walks Issued | |
| | Strikeouts | |
| | Hits Allowed | |
| | Doubles Allowed | |
| | Triples Allowed | |
| | Homers Allowed | |

#12 CAMMY PEREIRA

| Career (Last) | Category | 2022 |
|----------------------------------|--------------|-------------------------------|
| 3 (Maryland 2/15/20) | Runs | 2, 3x (at North Carolina 4/3) |
| 3, 10x (at Duke 3/19/22) | Hits | 3, 3x (at Duke 3/19) |
| 3, 2x (vs Kent State 2/11/22) | RBI | 3 (vs Kent State 2/11) |
| 1, 11x (Boston U 2/25/22) | Doubles | 1, 5x (at North Carolina 4/3) |
| 1, 2x (North Carolina 4/2/21) | Triples | |
| 2 (vs Georgia Tech 5/13/21) | Home Runs | 1, 2x (at Georgia 3/23) |
| 2 (Boston College 4/17/21) | Walks | 1, 9x (Furman 4/6) |
| 2, 2x (at North Carolina 4/2/22) | HBP | 2 (at North Carolina 4/2) |
| 1, 10x (Furman 4/6/22) | Stolen Bases | 1 (Furman 4/6) |

#13 ABI STUART

| Career (Last) | Category | 2022 |
|--------------------------------|--------------|------------------------|
| 3 (vs St. John's 2/9/20) | Runs | 1 (vs Kent State 2/11) |
| 2, 6x (Boston College 4/16/21) | Hits | |
| 3, 3x (Winthrop 4/13/21) | RBI | |
| 2 (Furman 3/12/21) | Doubles | |
| - | Triples | |
| 1, 5x (North Carolina 4/2/21) | Home Runs | |
| 2 (Western Carolina 2/12/20) | Walks | 1, 2x (Liberty 3/14) |
| 1, 2x (Boston College 4/17/21) | HBP | |
| - | Stolen Bases | |

#15 MADSION MAY

| Career (Last) | Category | 2022 |
|---------------|--------------|----------------------------|
| Same | Runs | 1, 2x (vs Texas Tech 2/17) |
| Same | Hits | 2 (vs Wisconsin 2/19) |
| Same | RBI | 2 (vs Texas Tech 2/17) |
| Same | Doubles | 1, 2x (at Charlotte 2/23) |
| - | Triples | |
| - | Home Runs | |
| Same | Walks | 2, 2x (vs Tennessee 2/18) |
| Same | HBP | 1 (vs Tennessee 2/18) |
| - | Stolen Bases | |

PLAYER HIGHS

#16 ALIA LOGOLEO

| CAREER (LAST) | CATEGORY | 2022 |
|----------------------------------|--------------|-------------------------------|
| 4 (at Syracuse 5/9/21) | Runs | 2, 3x (at North Carolina 4/1) |
| 4 (at Syracuse 5/9/21) | Hits | 3, 2x (at North Carolina 4/1) |
| 10 (at Syracuse 5/9/21) | RBI | 8 (at North Carolina 4/1) |
| 2, 2x (at Charlotte 2/23/22) | Doubles | 2 (at Charlotte 2/23) |
| 1, 2x (Morgan State 2/23/20) | Triples | |
| 3 (at Syracuse 5/9/21) | Home Runs | 2 (at North Carolina 4/1) |
| 2, 2x (at North Carolina 4/2/22) | Walks | 2 (at North Carolina 4/2) |
| 1, 8x (at North Carolina 4/3/22) | HBP | 1, 3x (at North Carolina 4/3) |
| 2 (vs Virginia Tech 5/14/21) | Stolen Bases | 1, 2x (Louisville 3/27) |

#17 REGAN SPENCER

| CAREER (LAST) | CATEGORY | 2022 |
|----------------------------------|-----------------|-------------------------------|
| 7.0, 2x (St. Francis 2/25/22) | IP | 7.0 (St. Francis 2/25) |
| 4 (at North Carolina 4/3/22) | Runs Allowed | 4 (at North Carolina 4/3) |
| 3 (Boston College 4/17/21) | Earned Runs | 2, 3x (at North Carolina 4/3) |
| 3, 3x (Liberty 3/13/22) | Walks Issued | 3 (Liberty 3/13) |
| 8 (at Louisville 3/20/21) | Strikeouts | 7 (Louisville 3/27) |
| 7 (at Georgia Tech 2/21/21) | Hits Allowed | 5 (St. Francis 2/25) |
| 2, 2x (at North Carolina 4/3/22) | Doubles Allowed | 2 (at North Carolina 4/3) |
| - | Triples Allowed | |
| 1, 4x (Liberty 3/13/22) | Homers Allowed | 1 (Liberty 3/13) |

#18 BAILEY TAYLOR

| CAREER (LAST) | CATEGORY | 2022 |
|----------------------------------|--------------|---------------------------|
| 3, 2x (Virginia 3/1/20) | Runs | |
| 2, 5x (Liberty 3/13/22) | Hits | 2 (Liberty 3/13) |
| 4 (Maryland 2/15/20) | RBI | 1, 2x (Liberty 3/13) |
| 1, 2x (Virginia 2/28/20) | Doubles | |
| - | Triples | |
| 1, 2x (Pittsburgh 3/6/20) | Home Runs | |
| 2, 2x (at North Carolina 4/2/22) | Walks | 2 (at North Carolina 4/2) |
| Same | HBP | 2 (vs Kent State 2/11) |
| - | Stolen Bases | |

#19 JADEN CHEEK

| CAREER (LAST) | CATEGORY | 2022 |
|----------------------------------|--------------|---------------------------|
| 1, 2x (at North Carolina 4/3/22) | Runs | 1 (at North Carolina 4/3) |
| 1 (Furman 3/23/21) | Hits | |
| - | RBI | |
| - | Doubles | |
| - | Triples | |
| - | Home Runs | |
| - | Walks | |
| - | HBP | |
| 1, 3x (Furman 4/6/22) | Stolen Bases | 1 (Furman 4/6) |

#21 JADEYN RUSZKOWSKI

| CAREER (LAST) | CATEGORY | 2022 |
|---------------|--------------|------|
| | Runs | |
| | Hits | |
| | RBI | |
| | Doubles | |
| | Triples | |
| | Home Runs | |
| | Walks | |
| | HBP | |
| | Stolen Bases | |

#23 JoJo HYATT

| CAREER (LAST) | CATEGORY | 2022 |
|--------------------------------|--------------|------------------------|
| 3 (Maryland 2/15/20) | Runs | 1 (Mercer 3/9) |
| 3 (at Syracuse 5/9/21) | Hits | 2, 2x (at Duke 3/18) |
| 3 (vs Texas Tech 2/17/22) | RBI | 3 (vs Texas Tech 2/17) |
| 1, 3x (at Syracuse 5/8/21) | Doubles | |
| 1, 2x (vs Texas Tech 2/17/22) | Triples | 1 (vs Texas Tech 2/17) |
| 1 (at Virginia 3/7/21) | Home Runs | |
| 2, 2x (Boston College 4/17/21) | Walks | 1, 5x (at Duke 3/20) |
| 1, 4x (at Duke 3/19/22) | HBP | 1 (at Duke 3/19) |
| - | Stolen Bases | |

#24 ARIELLE ODA

| CAREER (LAST) | CATEGORY | 2022 |
|-----------------------------|--------------|--------------------|
| 2, 3x (Furman 4/6/22) | Runs | 2 (Furman 4/6) |
| 1, 8x (Furman 4/6/22) | Hits | 1, 6x (Furman 4/6) |
| 2, 2x (Furman 4/6/22) | RBI | 2 (Furman 4/6) |
| 1 (Boston U 2/25/22) | Doubles | 1 (Boston U 2/25) |
| 1 (Charlotte 3/4/20) | Triples | |
| 1 (Furman 4/6/22) | Home Runs | 1 (Furman 4/6) |
| 1, 11x (Furman 4/6/22) | Walks | 1, 4x (Furman 4/6) |
| 1, 3x (Gardner-Webb 3/1/22) | HBP | 1 (Boston U 2/25) |
| 1, 9x (Furman 4/6/22) | Stolen Bases | 1, 4x (Furman 4/6) |

#25 MARISSA GUIMBARDA

| CAREER (LAST) | CATEGORY | 2022 |
|----------------------------------|--------------|-------------------------------|
| 2, 9x (at North Carolina 4/3/22) | Runs | 2, 4x (at North Carolina 4/3) |
| 3, 5x (at North Carolina 4/3/22) | Hits | 3 (at North Carolina 4/3) |
| 5, 2x (at North Carolina 4/2/22) | RBI | 5 (at North Carolina 4/2) |
| 2, 2x (Liberty 3/13/22) | Doubles | 2 (Liberty 3/13) |
| 1 (Morgan State 2/23/20) | Triples | |
| 2, 3x (at North Carolina 4/3/22) | Home Runs | 2, 2x (at North Carolina 4/3) |
| 3 (Virginia 2/28/20) | Walks | 2, 5x (Furman 4/6) |
| 3 (at Georgia Tech 2/21/21) | HBP | 1, 3x (at Duke 3/18) |
| 1, 2x (at Duke 3/18/22) | Stolen Bases | 1 (at Duke 3/18) |

#27 GRACE MATTIMORE

| CAREER (LAST) | CATEGORY | 2022 |
|-------------------------------|--------------|-----------------------|
| 2, 4x (North Carolina 4/2/21) | Runs | 1 (Virginia Tech 3/6) |
| 2, 9x (North Carolina 4/2/21) | Hits | 1 (Virginia Tech 3/6) |
| 4 (vs St. John's 2/9/20) | RBI | |
| 2 (Charlotte 3/4/20) | Doubles | 1 (Virginia Tech 3/6) |
| - | Triples | |
| 1 (North Carolina 4/2/21) | Home Runs | |
| 3, 2x (at Syracuse 5/8/21) | Walks | 1, 2x (Furman 4/6) |
| 2 (vs Illinois State 2/12/21) | HBP | |
| 1 (vs Illinois State 2/12/21) | Stolen Bases | |

#28 MADDIE MOORE

| CAREER (LAST) | CATEGORY | 2022 |
|---------------|--------------|--------------------------------|
| Same | Runs | 2, 2x (at North Carolina 4/3) |
| Same | Hits | 1, 11x (at North Carolina 4/3) |
| Same | RBI | 2 (Boston U 2/26) |
| Same | Doubles | 1, 3x (Louisville 3/25) |
| - | Triples | |
| Same | Home Runs | 1, 2x (at North Carolina 4/2) |
| Same | Walks | 2 (at North Carolina 4/3) |
| Same | HBP | 1 (at North Carolina 4/1) |
| Same | Stolen Bases | 1, 5x (Furman 4/6) |

#58 KYAH KELLER

| CAREER (LAST) | CATEGORY | 2022 |
|--------------------------------|--------------|-----------------------------|
| 3 (North Carolina 4/2/21) | Runs | 1 (Mercer 3/9) |
| 3 (North Carolina 4/2/21) | Hits | 2 (at Duke 3/19) |
| 4 (North Carolina 4/2/21) | RBI | 2, 2x (Louisville 3/26) |
| 1, 3x (Mercer 3/9/22) | Doubles | 1 (Mercer 3/9) |
| 1 (NC State 4/23/21) | Triples | |
| 2 (North Carolina 4/2/21) | Home Runs | |
| 1, 11x (Furman 4/6/22) | Walks | 1, 5x (Furman 4/6) |
| 1, 4x (South Carolina 3/30/22) | HBP | 1, 2x (South Carolina 3/30) |
| - | Stolen Bases | |

#72 VALERIE CAGLE

| CAREER (LAST) | CATEGORY | 2022 |
|----------------------------------|-----------------|-------------------------------|
| 3, 3x (vs Troy 5/21/21) | Runs | 2, 5x (at North Carolina 4/2) |
| 4, 2x (Virginia 2/28/20) | Hits | 3, 2x (at Charlotte 2/23) |
| 8 (Maryland 2/15/20) | RBI | 6 (at FGCU 2/10) |
| 2 (Furman 3/13/21) | Doubles | 1, 4x (at North Carolina 4/3) |
| 1 (Duke 3/28/21) | Triples | |
| 2, 7x (Winthrop 3/15/22) | Home Runs | 2 (Winthrop 3/15) |
| 3, 2x (Akron 2/26) | Walks | 3 (Akron 2/26) |
| 1 (vs Kent State 2/11) | HBP | 1 (vs Kent State 2/11) |
| 1, 5x (Winthrop 4/13/21) | Stolen Bases | |
| 11.0 (at Louisville 3/19/21) | IP | 9.0 (vs Tennessee 2/18) |
| 10 (vs Duke 2/7/20) | Runs Allowed | 6, 2x (at Duke 3/18) |
| 10 (vs Duke 2/7/20) | Earned Runs | 6, 2x (at Duke 3/18) |
| 6 (vs Georgia Tech 5/13/21) | Walks Issued | 3, 4x (Louisville 3/26) |
| 14, 3x (vs Georgia Tech 5/13/21) | Strikeouts | 13 (vs Tennessee 2/18) |
| 10 (vs Duke 2/7/20) | Hits Allowed | 9 (Virginia Tech 3/4) |
| 3 (Virginia 2/28/20) | Doubles Allowed | 1, 5x (at North Carolina 4/1) |
| 1, 3x (vs Tennessee 2/18/22) | Triples Allowed | 1 (vs Tennessee 2/18) |
| 2, 2x (vs Tennessee 2/18/22) | Homers Allowed | 2, 2x (at Duke 3/18) |

#77 HANNAH GOODWIN

| CAREER (LAST) | CATEGORY | 2022 |
|-------------------------------|--------------|------|
| 2, 3x (Pittsburgh 3/6/20) | Runs | |
| 3, 2x (vs Stetson 2/22/20) | Hits | |
| 4 (vs St. John's 2/7/20) | RBI | |
| 1, 5x (Pittsburgh 3/6/20) | Doubles | |
| - | Triples | |
| 1, 4x (Pres. College 3/10/20) | Home Runs | |
| 2 (Michigan State 2/16/20) | Walks | |
| 1, 4x (Georgia 2/26/20) | HBP | |
| 1 (at UNCG 2/18/20) | Stolen Bases | |

#87 MILLIE THOMPSON

| CAREER (LAST) | CATEGORY | 2022 |
|------------------------------------|-----------------|---------------------------------|
| 7.0, 5x (at North Carolina 4/2/22) | IP | 7.0, 3x (at North Carolina 4/2) |
| 3, 5x (Virginia Tech 3/5/22) | Runs Allowed | 3 (Virginia Tech 3/5) |
| 3, 2x (NC State 4/23/21) | Earned Runs | 2, 5x (Louisville 3/25) |
| 3, 3x (vs. Troy 5/22/21) | Walks Issued | 3 (at Charlotte 2/23) |
| 11 (Illinois 3/13/22) | Strikeouts | 11 (Illinois 3/13) |
| 8, 3x (NC State 4/23/21) | Hits Allowed | 7, 2x (Virginia Tech 3/5) |
| 2, 5x (at Duke 3/19/22) | Doubles Allowed | 2 (at Duke 3/19) |
| - | Triples Allowed | |
| 1, 9x (Louisville 3/25/22) | Homers Allowed | 1, 4x (Louisville 3/25) |