



# 2024 MATCH NOTES

# CLEMSON WOMEN'S SOCCER

1 COLLEGE CUP • 2 ACC CHAMPIONSHIPS • 6 NCAA QUARTERFINALS • 9 SWEET SIXTEENS • 24 NCAA TOURNAMENTS • 20 ALL-AMERICANS

## Game 1: No. 5 Clemson Tigers (0-0-0) at Auburn Tigers (0-0-0)

August 15, 2024 • Auburn, Ala.

### 2024 Schedule

Date	Day	Network	(Rk.)	Opponent	Result/Time (Est.)
8/4	Sun.	---		Georgia (exhibition)	-
8/10	Sat.	---		UNCW (exhibition)	-
8/15	Thurs.	SEC	at	Auburn	7:30 p.m.
8/18	Sun.			High Point	5:00 p.m.
8/23	Fri.			West Virginia	7:00 p.m.
8/29	Thurs.		at	Furman	7:00 p.m.
9/1	Sun.		at	Campbell	4:00 p.m.
9/8	Sun.		at	Charlotte	6:00 p.m.
9/12	Thurs.		* at	Virginia Tech	7:00 p.m.
9/19	Thurs.		* at	Duke	7:00 p.m.
9/27	Fri.		* at	Florida State	7:00 p.m.
10/3	Thurs.		* at	Pitt	7:00 p.m.
10/6	Sun.		* at	Boston College	1:00 p.m.
10/12	Sat.		* at	Miami	7:00 p.m.
10/17	Thurs.		* at	North Carolina	7:00 p.m.
10/20	Sun.		* at	NC State	1:00 p.m.
10/25	Fri.		* at	Virginia	7:00 p.m.
10/31	Thurs.		* at	Louisville	7:00 p.m.

\* - ACC Match

Home matches in **BOLD**

### PROGRAM FACTS

Clemson University		
Nickname		Tigers
Location		Clemson, S.C.
Colors		Tiger Orange & Regalia
Founded		1889
Enrollment		25,822
President	Dr. James P. Clements (Maryland-Baltimore County '85)	
Director of Athletics	Graham Neff (Georgia Tech '06)	
Facility/Year (Capacity)	Historic Riggs Field/1915 (6,500)	
All-Time Stats		
Overall Record	345-216-56	30th Season
ACC Record	117-133-25	30th Season
Goals	1,248	43.03/year avg

#### NCAA TOURNAMENT APPEARANCES

24 Total: 1994-2007, 2014-2023

#### SWEET SIXTEEN APPEARANCES

9 Total: 1997-2001, 2006, 2016, 2020, 2023

#### ELITE EIGHT APPEARANCES

6 Total: 1997, 1999, 2000, 2006, 2020, 2023

#### COLLEGE CUP APPEARANCES

2023

### 2023 SEASON STAT LEADERS

#### Season Stat Leaders

GOALS	10 - Makenna Morris
ASSISTS	8 - Jenna Tobia, Dani Davis
POINTS	26 - Makenna Morris
SHOTS	59 - Caroline Conti
SAVES	64 - Halle Mackiewicz
MINUTES	2231 - Halle Mackiewicz

#### Single Game Leaders

GOALS	3 - Sami Meredith
ASSISTS	3 - Megan Bornkamp, Jenna Tobia (2x), Makenna Morris
POINTS	6 - Sami Meredith
SHOTS	10 - Renee Lyles
SAVES	5 - Halle Mackiewicz (4x)

#### Individual Single-Season Records

GOALS	24 - Carmie Landeen	1994
ASSISTS	13 - Sheri Buetter, Renee Guion	1994; 2021
POINTS	57 - Carmie Landeen	1994
SAVES	119 - Ashley Phillips	2006

### #5 Clemson

Record:	0-0-0
Home:	0-0-0
Away:	0-0-0
Neutral:	0-0-0
Non-Conf.:	0-0-0
ACC Record:	0-0-0

2023 Record: 18-4-4 (7-2-1 ACC)

Head Coach: Eddie Radwanski // 14th season  
 Assoc. HC: Jeff Robbins // 14th season  
 Asst. Coach: Siri Mullinix // 14th season  
 Asst. Coach: Allison Wetherington // 2nd season

### The Series

CU Record	8-1-1
Last Meeting	2021
Trend	CU W4
Last match:	CU, 1-0

### Auburn

Record:	0-0-0
Home:	0-0-0
SEC Record:	0-0-0

2023 Record: 8-7-5 (3-4-3)

Head Coach: Karen Hoppa  
 Assoc. HC: Ben Madsen  
 Assoc. HC: Kelly Madsen  
 Asst. Coach: Christina Wakefield

### Need to Know

#### Program set to celebrate 30 Years of Women's Soccer at Clemson

• The 2024 season will be one for the history books as the program is celebrating 30 Years of women's soccer at Clemson. The 30th anniversary also comes as the athletic department is honoring 50 Years of women's sports at Clemson.

#### Clemson enters 2024 season ranked No. 5 in United Soccer Coaches Preseason Poll

• As the start of the 2024 season approaches, the Clemson Tigers have been placed at No. 5 in United Soccer Coaches Preseason Poll. This marks the highest the Tigers have been ranked in the preseason poll as their previous highest ranking was No. 7 in 2021.

#### Tigers projected to finish fifth in ACC preseason coaches poll

• The Clemson Tigers were placed No. 5 on the 2024 ACC Preseason Coaches Poll as the league head coaches voted the team to finish fifth overall this season as announced by the ACC. Clemson, who finished third overall in the ACC last season, improved their preseason ranking as they were voted to finish sixth in the preseason poll for the 2023 campaign.

#### Davis, Bornkamp Named to Top Drawer Soccer Preseason Best XI Teams

• Sophomore Dani Davis and graduate Megan Bornkamp were both named to Top Drawer Soccer's Preseason Best XI Teams as Davis was placed on the second team and Bornkamp was named to the third team.

### TIGERS IN THE PROS

#### Active NWSL/Professional Players

Mariana Speckmaier	Wellington Phoenix FC
Sam Staab	Chicago Red Stars
Kailen Sheridan	San Diego Wave
Sandy MacIver	Manchester City
Tabitha Nyberg	IK Vifjan Strågnås
Hensley Hancuff	North Carolina Courage
Renee Guion	Fortuna Hjørring
Maliah Morris	Western Sydney Wanderers FC
Makenna Morris	Washington Spirit
Hal Hershfeldt	Washington Spirit
Caroline Conti	Bay FC

#### Active National Players

Kailen Sheridan	Canada WNT
Sandy MacIver	England WNT
Mariana Speckmaier	Venezuela WNT
Hal Hershfeldt	USA WNT

# QUICK FACTS

## MEDIA SERVICES

### CLEMSON ATHLETIC COMMUNICATIONS

<b>Women's Soccer Contact</b>	<b>Autumn Froitland</b>
Email	afroitl@clemson.edu
Phone	623-628-706
<b>Women's Soccer Secondary</b>	<b>Chandler Simpson</b>
Email	mcsimp2@g.clemson.edu
<b>Assoc. AD - Communications</b>	<b>Jeff Kallin</b>
Email	kallin@clemson.edu

### CLEMSON ATHLETICS

<b>Website</b>	ClemsonTigers.com
<b>Ticket Office Phone</b>	1-800-CLEMSON
<b>Social Media</b>	@ClemsonWSoccer (Twitter)
	@ClemsonWSoccer (Instagram)
	@ClemsonTigers (Main Athletics)

### ACC MEDIA RELATIONS

**Brandon McGinnis** is the women's soccer athletic communications contact at the ACC office. He can be reached at 336-369-4642(office) or via email at bmcginnis@theacc.org.

### CREDENTIALS

Members of the working press can request media credentials on a season, or match-by-match, basis. All requests must be sent to **Autumn Froitland** via email. Season credentials may be requested at any point throughout the season. Those interested in a single-match credential must communicate the request at least one day prior to the match.

### INTERVIEW

Interviews are available at any point throughout the week with select players and **Head Coach Eddie Radwanski**. Contact **Autumn Froitland** via phone or email to coordinate all interview requests. Players are available at the discretion of the women's soccer staff upon request.

## THE LAST TIME THE TIGERS...

EVENT	DATE	OPP. (Results, Score)
Scored <b>0</b> goals	12/01/23	vs. Florida State (L, 0-2)
Scored <b>1</b> goal or more	11/25/23	vs. Penn State (W, 2-1)
Scored <b>2</b> goals or more	11/25/23	vs. Penn State (W, 2-1)
Scored <b>3</b> goals or more	11/02/23	vs. Notre Dame (W, 3-2)
Scored <b>4</b> goals or more	09/30/23	vs. Syracuse (W, 5-1)
Scored <b>5</b> goals or more	09/30/23	vs. Syracuse (W, 5-1)
Scored <b>6</b> goals or more	08/20/23	vs. Gardner-Webb (W, 9-0)
Scored <b>7</b> goals or more	08/20/23	vs. Gardner-Webb (W, 9-0)
Scored <b>8</b> goals or more	08/20/23	vs. Gardner-Webb (W, 9-0)
Scored <b>9</b> goals or more	08/20/23	vs. Gardner-Webb (W, 9-0)
Scored <b>10</b> goals or more	09/22/13	vs. Alabama A&M (W, 14-0)
Allowed <b>0</b> goals	11/06/23	vs. Radford (W, 2-0)
Allowed <b>1</b> goal	11/25/23	vs. Penn State (W, 2-1)
Allowed <b>2</b> goals	12/01/23	vs. Florida State (L, 0-2)
Allowed <b>3</b> goals	09/15/23	vs. Florida State (L, 4-2)
Allowed <b>4</b> goals	09/15/23	vs. Florida State (L, 4-2)
Allowed <b>5</b> goals	11/22/19	vs. UCLA (L, 0-5)
Scored a goal <b>10:00</b> or earlier	09/21/23	vs. Miami (W, 5-0)
Scored a goal <b>80:00</b> or later	11/19/23	vs. Georgia (T-1-1 (CU advances 5-3 on PKs))
Margin is <b>1</b> goal	09/08/22	vs. West Virginia (W, 1-0)
Margin is <b>2</b> goals	12/01/23	vs. Florida State (L, 0-2)
Margin is <b>3+</b> goals	09/22/22	vs. Wake Forest (L, 4-1)
<b>3 or more</b> Clemson players scored	09/30/23	vs. Syracuse (W, 5-1), 5 players
Attempted <b>0-9</b> shots or more	09/15/22	vs. Notre Dame (W, 2-0) 14 shots
Attempted <b>10-19</b> shots or more	10/08/23	vs. Virginia Tech (W, 1-0) 17shots
Attempted <b>20-29</b> shots or more	10/05/23	vs. Virginia (T, 1-1) 20 shots
Attempted <b>30+</b> shots	08/20/23	vs. Gardner-Webb (W, 9-0)- 40 shots
Allowed <b>0-9</b> shots	09/22/22	vs. Wake Forest (L, 4-1) 10 shots
Allowed <b>10-19</b> shots	12/01/23	vs. Florida State (L, 0-2) 11 shots
Allowed <b>20-29</b> shots	08/28/22	vs. Alabama (L, 3-0) - 20 shots
Allowed <b>30+</b> shots	09/27/12	vs. Duke (L, 0-3) - 31 shots
Won in OT/2OT	04/03/21	vs. Alabama (W, 1-0 [OT])
Lost in OT/2OT	10/10/21	vs. Notre Dame (L, 1-2 [2OT])
Tied in OT/2OT	11/19/23	vs. Georgia (T-1-1 (CU advances 5-3 on PKs))
Competed in a <b>PK Shootout</b>	11/19/23	vs. Georgia (T-1-1 (CU advances 5-3 on PKs))
Won a <b>PK Shootout</b>	11/19/23	vs. Georgia (T-1-1 (CU advances 5-3 on PKs))
Played <b>13+</b> players	09/22/22	vs. Wake Forest (L, 4-1) 14 players
Played <b>16+</b> players	09/08/22	vs. West Virginia (W, 1-0)- 16 players
Played <b>18+</b> players	12/01/23	vs. Florida State (L, 0-2) - 19 players
Beat a United Soccer Coach <b>No. 1</b> team	09/13/00	vs. North Carolina (W, 2-1)
Beat a United Soccer Coach <b>Top 5</b> team	11/25/23	vs. Penn State (W, 2-1) #5
Beat a United Soccer Coach <b>Top 10</b> team	09/07/23	vs. Arkansas (W, 1-0) #7
Beat a United Soccer Coach <b>Top 25</b> team	10/22/23	vs. Pitt (W, 1-0) - #18

## ACC PRESEASON COACHES POLL

Team	Points (First-Place Votes)
1. Florida State	255 (15)
2. Stanford	235 (2)
3. Notre Dame	211
4. North Carolina	187
5. Clemson	186
6. Virginia	177
7. Duke	175
8. Pitt	168
9. Wake Forest	160
10. Virginia Tech	116
11. Cal	111
12. NC State	85
13. Louisville	80
14(t). Boston College	50
14(t). SMU	50
16. Miami	44
17. Syracuse	22

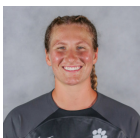
## TIGERS IN THE POLLS

Week	USC	TDS	RPI
Preseason	#5	-	-



# 2024 CLEMSON TIGERS WOMEN'S SOCCER

1



## NONA REASON (REE-zin)

R-So. • Goalkeeper • 5-10 • Noblesville, Ind. • North Carolina

	GMS	STARTS	SAVES	GA	SAVE %	SHUTOOTS	W/L/T
2023 (UNC)	2	1	1	1	.500	1	1/0/0
Career (CU-UNC)	2	1	1	1	.500	1	1/0/0

Season Highs: Saves (1), Goals (1), Assists (1) \*shutouts are solo

- Transfer from North Carolina
- Member of the 2021 U.S. Soccer Women's Youth National U20 training camp roster
- Played on the 2020 U.S. U16 national team
- Helped the US win the 2018 CONCACAF U15 Girls Championship at the IMG Academy
- Received the Golden Glove award as the best goalkeeper during the 2019 U15 U.S. Soccer Development Academy playoffs for San Diego Surf

2



## KENDALL BODAK

Fr. • Midfield • 5-2 • Monson, Mass.

	GMS	STARTS	GOALS	ASSISTS	POINTS	SOG
2024	--	--	--	--	--	--
Career	--	--	--	--	--	--

Season Highs: Goals (0), Assists (0), Points (0), Shots on Goal (0)



3



## LAYNE ST. GEORGE ("LANE")

Sr. • Defender • 5-5 • Seattle, Wash.

	GMS	STARTS	GOALS	ASSISTS	POINTS	SOG
2023	14	4	0	0	0	1
Career	39	21	0	2	2	4

Season Highs: Goals (0), Assists (0), Points (0), Shots on Goal (0)

- 2x All-ACC Academic Team
- 2021 Gatorade Washington Girls Soccer Player of the Year
- Member of the U.S. U-17 WNT player pool (UEFA Development Tournament in Prague, Czech Republic) that was crowned 2019 Champions
- Part of the program's first-ever College Cup appearance in the 2023 season

5



## EMILY BROUGH (BRUFF)

Jr. • Midfield • 5-8 • Liverpool, England

	GMS	STARTS	GOALS	ASSISTS	POINTS	SOG
2023	26	10	1	4	6	14
Career	43	16	4	4	12	17

Season Highs: Goals (1), Assists (1), Points (1), Shots on Goal (1)

- 2x All-ACC Academic Team
- Liverpool Sport Woman of the Year (prior to Clemson)
- Made her professional debut for Liverpool FC and is the second youngest player to play for the club
- Part of the program's first-ever College Cup appearance in the 2023 season

6



## ELEANOR HAYS

So. • Defender • 5-9 • Lewisville, Texas

	GMS	STARTS	GOALS	ASSISTS	POINTS	SOG
2023	1	0	0	0	0	0
Career	1	0	0	0	0	0

Season Highs: Goals (1), Assists (1), Points (1), Shots on Goal (1)

- Part of the program's first-ever College Cup appearance in the 2023 season

7



## DANI DAVIS

So. • Midfield • 5-9 • Port Washington, N.Y.

	GMS	STARTS	GOALS	ASSISTS	POINTS	SOG
2024	26	26	1	8	10	11
Career	26	26	1	8	10	11

Season Highs: Goals (1), Assists (0), Points (1), Shots on Goal (0)

- ACC All Tournament Team Selection
- ACC All-Freshman Team Selection
- All-ACC Academic Team Selection
- Top Drawer Soccer Freshman Best XI First Team
- Midseason Top 100 Freshman (4)
- Member of Tiger Leadership Academy
- Part of the program's first-ever College Cup appearance in the 2023 season

8



## JENNA TOBIA (TOE-bee-uh)

So. • Forward • 5-5 • Warren, N.J.

	GMS	STARTS	GOALS	ASSISTS	POINTS	SOG
2023	26	23	4	8	16	14
Career	26	23	4	8	16	14

Season Highs: Goals (1), Assists (1), Points (1), Shots on Goal (1)

- ACC All-Freshman Team Selection
- All-ACC Academic Team Selection
- Top Drawer Soccer Freshman Best XI Freshman First Team Selection
- Midseason Top 100 Freshman (7)
- Part of the program's first-ever College Cup appearance in the 2023 season

9



## MACKENZIE DUFF

Sr. • Defender • 5-11 • St. Louis, Mo.

	GMS	STARTS	GOALS	ASSISTS	POINTS	SOG
2023	26	23	6	1	13	6
Career	43	25	6	1	13	6

Season Highs: Goals (1), Assists (1), Points (1), Shots on Goal (1)

- 2x All-ACC Academic Team
- ACC All-Tournament Team Selection
- ACC Player of the Week (9/26/23)
- Part of the program's first-ever College Cup appearance in the 2023 season

10



## RENEE LYLES (Rhymes with "Miles")

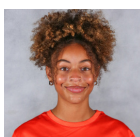
Sr. • Forward • 5-5 • Atlanta, Ga.

	GMS	STARTS	GOALS	ASSISTS	POINTS	SOG
2023	26	16	6	5	17	21
Career	62	51	17	13	47	59

Season Highs: Goals (1), Assists (0), Points (1), Shots on Goal (0)

- 3x All-ACC Academic Team
- ACC Player of the Week (10/24/23)
- ACC All-Freshman Team (2021)
- Part of the program's first-ever College Cup appearance in the 2023 season

11



## TATUM SHORT

So. • Forward • 5-5 • Las Vegas, Nev.

	GMS	STARTS	GOALS	ASSISTS	POINTS	SOG
2023	26	22	3	4	10	15
Career	26	22	3	4	10	15

Season Highs: Goals (1), Assists (1), Points (1), Shots on Goal (0)

- ACC All-Freshman Team Selection
- Top Drawer Soccer Midseason Top 100 Freshman Selection (22)
- Member of Tiger Leadership Academy
- Part of the program's first-ever College Cup appearance in the 2023 season

12



## SYDNEY MINARIK (min-AIR-ick)

So. • Forward • 5-5 • Las Vegas, Nev.

	GMS	STARTS	GOALS	ASSISTS	POINTS	SOG
2023	24	3	0	2	2	4
Career	57	17	5	4	14	18

Season Highs: Goals (1), Assists (0), Points (0), Shots on Goal (0)

- 2x All-ACC Academic Team Selection
- Part of the 2023-24 POWER Women's Leadership Academy
- Member of Paw Pals
- Member of Student Athlete Advisory Committee (SAAC)
- Part of the program's first-ever College Cup appearance in the 2023 season

# 2024 CLEMSON TIGERS WOMEN'S SOCCER

13



## KAM PICKETT

Gr. • Defender • 5-0 • Santa Barbara, Calif. • Pepperdine

	GMS	STARTS	GOALS	ASSISTS	POINTS	SOG
2023 (PEP)	9	9	1	0	2	4
Career (CU+PEP)	49	48	1	2	4	6

Season Highs: Goals (0), Assists (0), Points (0), Shots on Goal (0)

- Transfer from Pepperdine
- 2022 All-WCC Honorable Mention
- 2021 WCC All-Freshman Team
- Pepperdine Scholar-Athlete

15



## ELLA JOHNSON

Fr. • Forward • 5-5 • Wrightsville Beach, N.C.

	GMS	STARTS	GOALS	ASSISTS	POINTS	SOG
2024	--	--	--	--	--	--
Career	--	--	--	--	--	--

Season Highs: Goals (0), Assists (0), Points (0), Shots on Goal (0)

16



## ELLA HAUSER (WHO-zer)

Sr. • Defender • 5-5 • Seattle, Wash.

	GMS	STARTS	GOALS	ASSISTS	POINTS	SOG
2023	9	0	0	0	0	0
Career	24	2	0	0	0	0

Season Highs: Goals (0), Assists (0), Points (0), Shots on Goal (0)

- Mother Sheri (Bueter) was an All-American for Clemson women's soccer and the program's all-time assists leader
- Father Scott played on the baseball team at Clemson
- Brother Nolan is a freshman kicker for the Clemson football team
- Part of the program's first-ever College Cup appearance in the 2023 season

17



## ANNA CASTENFELT (Cast-IN-felt)

Fr. • Midfield • 5-7 • Paradise Valley, Ariz.

	GMS	STARTS	GOALS	ASSISTS	POINTS	SOG
2024	--	--	--	--	--	--
Career	--	--	--	--	--	--

Season Highs: Goals (0), Assists (0), Points (0), Shots on Goal (0)

18



## MARIA MANOUSOS (Ma-NEW-sos)

Jr. • Forward • 5-6 • Weddington, N.C.

	GMS	STARTS	GOALS	ASSISTS	POINTS	SOG
2023	23	0	2	0	4	2
Career	39	4	4	2	10	8

Season Highs: Goals (1), Assists (1), Points (1), Shots on Goal (1)

- Part of the program's first-ever College Cup appearance in the 2023 season

19



## ANNA RYDIN (RIE-din)

Fr. • Defender • 6-0 • Chapel Hill, N.C.

	GMS	STARTS	GOALS	ASSISTS	POINTS	SOG
2024	--	--	--	--	--	--
Career	--	--	--	--	--	--

Season Highs: Goals (0), Assists (0), Points (0), Shots on Goal (0)

21



## EMILIA ERIKSEN

Fr. • Defender • 5-7 • Los Gatos, Calif.

	GMS	STARTS	GOALS	ASSISTS	POINTS	SOG
2024	--	--	--	--	--	--
Career	--	--	--	--	--	--

Season Highs: Goals (0), Assists (0), Points (0), Shots on Goal (0)

22



## GABBY GAMBINO (Gam-BEE-no)

Jr. • Midfield • 5-5 • Lewiston, N.Y.

	GMS	STARTS	GOALS	ASSISTS	POINTS	SOG
2023	8	2	0	2	2	1
Career	15	2	0	2	2	4

Season Highs: Goals (0), Assists (1), Points (1), Shots on Goal (1)

- Part of the program's first-ever College Cup appearance in the 2023 season

23



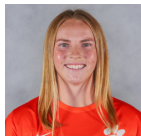
## ALLIE SERLENGA (SIR-ling-uh)

Fr. • Forward • 5-7 • Mount Laurel, N.J.

	GMS	STARTS	GOALS	ASSISTS	POINTS	SOG
2024	--	--	--	--	--	--
Career	--	--	--	--	--	--

Season Highs: Goals (0), Assists (0), Points (0), Shots on Goal (0)

24



## MEGAN BORNKAMP

Gr. • Forward • 5-9 • Mooresville, N.C.

	GMS	STARTS	GOALS	ASSISTS	POINTS	SOG
2023	25	24	5	7	17	23
Career	81	80	24	20	68	64

Season Highs: Goals (1), Assists (0), Points (0), Shots on Goal (0)

- 4x All-ACC (Third Team in 2023)
- ACC Postgraduate Scholar
- Third Team All-America (2021)
- 4x All-ACC Academic Team
- Part of the program's first-ever College Cup appearance in the 2023 season
- Part of the 2022-23 POWER Women's Leadership Academy

25



## DANI LYNCH

So. • Defender • 5-7 • Los Angeles, Calif.

	GMS	STARTS	GOALS	ASSISTS	POINTS	SOG
2023	5	0	0	1	1	0
Career	5	0	0	1	1	0

Season Highs: Goals (0), Assists (0), Points (0), Shots on Goal (0)

- Sister, Ally, also plays for the Tigers
- Part of the program's first-ever College Cup appearance in the 2023 season

# 2024 CLEMSON TIGERS WOMEN'S SOCCER

26



## ADDY HOLGORSE

Jr. • Goalkeeper • 5-6 • Charlotte, N.C.

	GMS	STARTS	SAVES	GA	SAVE %	SHUTOUTS	W/L/T
2023	3	1	0	1	.000	1	1/0/0
Career	3	1	0	1	.000	1	1/0/0

**Season Highs:** Saves (0), Goals (0), Assists (0) \*shutouts are solo

- Part of the program's first-ever College Cup appearance in the 2023 season

27



## ERIN SHERDAN (SURE-din)

So. • Forward • 5-3 • Melbourne, Fla.

	GMS	STARTS	GOALS	ASSISTS	POINTS	SOG
2024	--	--	--	--	--	--
Career	--	--	--	--	--	--

**Season Highs:** Goals (0), Assists (0), Points (0), Shots on Goal (0)

- Part of the program's first-ever College Cup appearance in the 2023 season

29



## JORDAN THOMPSON

Gr. • Forward • 5-6 • Lee, N.H. • College of Charleston

	GMS	STARTS	GOALS	ASSISTS	POINTS	SOG
2023 (CofC)	9	1	0	0	0	2
Career (CU+CofC)	22	3	1	0	2	6

**Season Highs:** Goals (0), Assists (0), Points (0), Shots on Goal (0)

- Transfer from College of Charleston

30



## CHRISTIAN BRATHWAITE (Br-ATH-wait)

So. • Midfield • 5-6 • Charlotte, N.C. • Georgia

	GMS	STARTS	GOALS	ASSISTS	POINTS	SOG
2023 (UGA)	20	9	1	1	3	3
Career (CU+UGA)	20	9	1	1	3	3

**Season Highs:** Goals (0), Assists (0), Points (0), Shots on Goal (0)

- Transfer from Georgia
- Ranked No. 70 on Top Drawer Soccer Top 100 Midseason Freshman List
- Named to SEC Academic Honor Roll, Dean's List, and J. Reid Parker Director of Athletics Honor Roll

34



## ALLY LYNCH

Sr. • Goalkeeper • 5-8 • Los Angeles, Calif.

	GMS	STARTS	SAVES	GA	SAVE %	SHUTOUTS	W/L/T
2023	3	0	0	1	1.000	0	0/0/0
Career	5	0	1	0	1.000	0	0/0/0

**Season Highs:** Goals (0), Assists (0), Points (0), Shots on Goal (0)

- Sister, Dani, also plays for the Tigers
- Part of the program's first-ever College Cup appearance in the 2023 season
- Part of the 2023-24 POWER Women's Leadership Academy

## COACHES AND STAFF



## EDDIE RADWANSKI (Rad-wan-skee)

Head Coach  
14th season  
2016 ACC Coach of the Year  
Clemson Record: 143-84-33  
Overall Record: 282-149-46



## JEFF ROBBINS

Associate Head Coach  
14th season



## SIRI MULLINIX

Assistant/Goalkeeper Coach  
14th season



## ALLISON WETHERINGTON

Assistant Coach  
2nd season



**2023-24 Clemson Women's Soccer  
Individual Statistics  
All games**

**Game Records**

Overall	Conference	Home	Away	Neutral
18 - 4 - 4	7 - 2 - 1	11 - 1 - 3	6 - 1 - 1	1 - 2 - 0

**Team Box Score**

No.	Player	GP-GS	MIN	G	A	PTS	SH	SH%	SOG	SOG%	YC	RC	GWG	PK-ATT	FG	OT	HAT	GTG	FOUL
2	Morris, Makenna	26-26	2159	10	6	26	46	.217	28	.609	0	0	5	1-1	6	0	0	0	9
23	Conti, Caroline	24-22	1825	8	4	20	59	.136	34	.576	1	0	4	1-1	3	0	0	0	29
10	Lyles, Renee	26-16	1488	6	5	17	41	.146	21	.512	0	0	2	1-1	1	0	0	1	17
24	Bornkamp, Megan	25-24	1631	5	7	17	46	.109	23	.500	2	0	0	0-0	3	0	0	1	32
8	Tobia, Jenna	26-23	1331	4	8	16	38	.105	14	.368	4	0	1	0-0	1	0	0	0	8
29	Meredith, Samantha	26-10	1079	6	2	14	28	.214	20	.714	0	0	0	0-0	0	0	1	0	17
9	Duff, Mackenzie	26-23	2068	6	1	13	10	.600	6	.600	2	0	3	0-0	3	0	0	0	8
11	Short, Tatum	26-22	1482	3	4	10	31	.097	15	.484	0	0	1	0-0	1	0	0	0	7
7	Davis, Dani	26-26	2261	1	8	10	34	.029	11	.324	2	0	1	0-0	1	0	0	0	14
13	Wennar, Emma	26-2	777	3	2	8	28	.107	13	.464	0	0	0	0-0	0	0	0	1	12
15	Hershfelt, Hal	24-23	1931	1	4	6	25	.040	10	.400	6	0	0	0-0	0	0	0	0	22
5	Brough, Emily	26-10	1201	1	4	6	22	.045	14	.636	0	0	1	0-0	0	0	0	0	7
18	Manousos, Maria	23-0	504	2	0	4	6	.333	2	.333	0	0	0	0-0	0	0	0	0	5
4	White, Harper	24-24	2117	0	3	3	6	.000	1	.167	1	0	0	0-0	0	0	0	0	6
12	Minarik, Sydney	24-3	795	0	2	2	11	.000	4	.364	0	0	0	0-0	0	0	0	0	1
22	Gambino, Gabby	8-2	263	0	2	2	4	.000	1	.250	0	0	0	0-0	0	0	0	0	3
25	Lynch, Dani	5-0	77	0	1	1	0	.000	0	.000	0	0	0	0-0	0	0	0	0	0
3	St. George, Layne	14-4	449	0	0	0	1	.000	1	1.000	1	0	0	0-0	0	0	0	0	6
16	Hauser, Ella	9-0	153	0	0	0	1	.000	0	.000	0	0	0	0-0	0	0	0	0	4
6	Hays, Eleanor	1-0	19	0	0	0	0	.000	0	.000	0	0	0	0-0	0	0	0	0	0
26	Holgorsen, Addy	3-1	129	0	0	0	0	.000	0	.000	0	0	0	0-0	0	0	0	0	0
1	Mackiewicz, Halle	25-25	2232	0	0	0	0	.000	0	.000	0	0	0	0-0	0	0	0	0	1
<b>Total</b>		<b>26</b>	<b>-</b>	<b>56</b>	<b>63</b>	<b>175</b>	<b>437</b>	<b>.128</b>	<b>218</b>	<b>.499</b>	<b>21</b>	<b>0</b>	<b>-</b>	<b>3-3</b>	<b>19</b>	<b>0</b>	<b>1</b>	<b>-</b>	<b>208</b>
<b>Opponents</b>		<b>26</b>	<b>-</b>	<b>19</b>	<b>15</b>	<b>53</b>	<b>184</b>	<b>.103</b>	<b>84</b>	<b>.457</b>	<b>24</b>	<b>1</b>	<b>-</b>	<b>0-1</b>	<b>6</b>	<b>0</b>	<b>0</b>	<b>-</b>	<b>183</b>

No.	Goalie	GP-GS	Goal Average			Saves		Record			
			MINS	GA	GA AVG	SAVES	PCT	W	L	T	SHO/CBO
26	Holgorsen, Addy	3-1	128:54	1	0.70	0	.000	1	0	0	1/0
1	Mackiewicz, Halle	25-25	2231:06	18	0.73	64	.780	17	4	4	13/0
TM	TEAM	-	00:00	0	0.00	1	1.000	0	0	0	0/0
<b>Total</b>		<b>26</b>	<b>2360:00</b>	<b>19</b>	<b>0.72</b>	<b>65</b>	<b>.774</b>	<b>18</b>	<b>4</b>	<b>4</b>	<b>14</b>
<b>Opponents</b>		<b>26</b>	<b>2360:00</b>	<b>56</b>	<b>2.14</b>	<b>162</b>	<b>.743</b>	<b>4</b>	<b>18</b>	<b>4</b>	<b>3</b>

**Goals by Periods**

Team	1st	2nd	OT1	OT2	TOTAL
CU	27	29	0	0	56
Opponents	7	12	0	0	19

**Corners by Periods**

Team	1st	2nd	OT1	OT2	TOTAL
CU	79	78	0	0	158
Opponents	30	45	0	0	75

**Shots by Periods**

Team	1st	2nd	OT1	OT2	TOTAL
CU	208	227	0	0	437
Opponents	78	103	0	2	184

**Fouls by Periods**

Team	1st	2nd	OT1	OT2	TOTAL
CU	94	112	0	2	208
Opponents	80	102	0	1	183



**2023-24 Clemson Women's Soccer  
Individual Statistics  
In Conference games**

**Game Records**

Overall	Conference	Home	Away	Neutral
7-2-1	7-2-1	3-1-1	4-1-0	0-0-0

**Team Box Score**

No.	Player	GP-GS	MIN	G	A	PTS	SH	SH%	SOG	SOG%	YC	RC	GWG	PK-ATT	FG	OT	HAT	GTG	FOUL
23	Conti, Caroline	10-10	785	4	3	11	24	.167	14	.583	0	0	1	0-0	2	0	0	0	12
10	Lyles, Renee	10-3	471	4	3	11	11	.364	6	.545	0	0	1	0-0	1	0	0	1	5
2	Morris, Makenna	10-10	854	4	2	10	16	.250	12	.750	0	0	2	1-1	2	0	0	0	3
8	Tobia, Jenna	10-10	565	2	1	5	14	.143	4	.286	1	0	1	0-0	1	0	0	0	3
29	Meredith, Samantha	10-8	571	2	1	5	14	.143	9	.643	0	0	0	0-0	0	0	0	0	4
24	Bornkamp, Megan	10-10	688	0	5	5	17	.000	8	.471	0	0	0	0-0	0	0	0	0	9
9	Duff, Mackenzie	10-9	762	2	0	4	3	.667	2	.667	1	0	1	0-0	1	0	0	0	4
11	Short, Tatum	10-10	582	1	2	4	11	.091	7	.636	0	0	0	0-0	1	0	0	0	3
5	Brough, Emily	10-0	348	1	2	4	4	.250	3	.750	0	0	1	0-0	0	0	0	0	4
7	Davis, Dani	10-10	891	0	4	4	9	.000	3	.333	0	0	0	0-0	0	0	0	0	4
15	Hershfelt, Hal	9-8	673	0	4	4	7	.000	2	.286	2	0	0	0-0	0	0	0	0	3
18	Manousos, Maria	7-0	161	1	0	2	1	1.000	1	1.000	0	0	0	0-0	0	0	0	0	2
13	Wennar, Emma	10-1	350	0	1	1	14	.000	5	.357	0	0	0	0-0	0	0	0	0	4
4	White, Harper	8-8	720	0	1	1	2	.000	1	.500	1	0	0	0-0	0	0	0	0	1
22	Gambino, Gabby	2-0	42	0	1	1	0	.000	0	.000	0	0	0	0-0	0	0	0	0	1
12	Minarik, Sydney	8-0	229	0	0	0	2	.000	1	.500	0	0	0	0-0	0	0	0	0	0
26	Holgorsen, Addy	1-0	8	0	0	0	0	.000	0	.000	0	0	0	0-0	0	0	0	0	0
25	Lynch, Dani	1-0	8	0	0	0	0	.000	0	.000	0	0	0	0-0	0	0	0	0	0
3	St. George, Layne	8-3	276	0	0	0	0	.000	0	.000	1	0	0	0-0	0	0	0	0	6
1	Mackiewicz, Halle	10-10	893	0	0	0	0	.000	0	.000	0	0	0	0-0	0	0	0	0	1
16	Hauser, Ella	3-0	34	0	0	0	0	.000	0	.000	0	0	0	0-0	0	0	0	0	2
<b>Total</b>		<b>10</b>	<b>-</b>	<b>21</b>	<b>30</b>	<b>72</b>	<b>149</b>	<b>.141</b>	<b>78</b>	<b>.523</b>	<b>6</b>	<b>0</b>	<b>-</b>	<b>1-1</b>	<b>8</b>	<b>0</b>	<b>0</b>	<b>-</b>	<b>71</b>
<b>Opponents</b>		<b>10</b>	<b>-</b>	<b>8</b>	<b>7</b>	<b>23</b>	<b>65</b>	<b>.123</b>	<b>33</b>	<b>.508</b>	<b>6</b>	<b>0</b>	<b>-</b>	<b>0-1</b>	<b>2</b>	<b>0</b>	<b>0</b>	<b>-</b>	<b>69</b>

No.	Goalie	GP-GS	Goal Average			Saves		Record			
			MINS	GA	GA AVG	SAVES	PCT	W	L	T	SHO/CBO
26	Holgorsen, Addy	1-0	07:31	0	0.00	0	.000	0	0	0	0/0
1	Mackiewicz, Halle	10-10	892:29	8	0.81	25	.758	7	2	1	6/0
TM	TEAM	-	00:00	0	0.00	0	.000	0	0	0	0/0
<b>Total</b>		<b>10</b>	<b>900:00</b>	<b>8</b>	<b>0.80</b>	<b>25</b>	<b>.758</b>	<b>7</b>	<b>2</b>	<b>1</b>	<b>6</b>
<b>Opponents</b>		<b>10</b>	<b>900:00</b>	<b>21</b>	<b>2.10</b>	<b>57</b>	<b>.731</b>	<b>2</b>	<b>7</b>	<b>1</b>	<b>1</b>

**Goals by Periods**

Team	1st	2nd	OT1	OT2	TOTAL
CU	11	10	0	0	21
Opponents	5	3	0	0	8

**Corners by Periods**

Team	1st	2nd	OT1	OT2	TOTAL
CU	28	31	0	0	59
Opponents	9	21	0	0	30

**Shots by Periods**

Team	1st	2nd	OT1	OT2	TOTAL
CU	77	72	0	0	149
Opponents	27	38	0	0	65

**Fouls by Periods**

Team	1st	2nd	OT1	OT2	TOTAL
CU	30	41	0	0	71
Opponents	33	36	0	0	69

# 2024 CLEMSON TIGERS WOMEN'S SOCCER



**#1 NONA REASON**  
GK • 5-10 • R-So.



**#2 KENDALL BODAK**  
M • 5-2 • Fr.



**#3 LAYNE ST. GEORGE**  
D • 5-5 • Sr.



**#5 EMILY BROUGH**  
M • 5-8 • Jr.



**#6 ELEANOR HAYS**  
D • 5-9 • So.



**#7 DANI DAVIS**  
M • 5-9 • So.



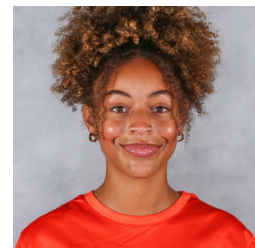
**#8 JENNA TOBIA**  
F • 5-5 • So.



**#9 MACKENZIE DUFF**  
D • 5-11 • Sr.



**#10 RENEE LYLES**  
F • 5-5 • Sr.



**#11 TATUM SHORT**  
F • 5-5 • So.



**#12 SYDNEY MINARIK**  
F • 5-4 • Sr.



**#13 KAM PICKETT**  
D • 5-0 • Gr.



**#15 ELLA JOHNSON**  
F • 5-5 • Fr.



**#16 ELLA HAUSER**  
M • 5-6 • Sr.



**#17 ANNA CASTENFELT**  
M • 5-7 • Fr.



**#18 MARIA MANOUSOS**  
F • 5-6 • Jr.



**#19 ANNA RYDIN**  
D • 6-0 • Fr.



**#21 EMILIA ERIKSEN**  
D • 5-7 • Fr.



**#22 GABBY GAMBINO**  
M • 5-5 • Jr.



**#23 ALLIE SERLENGA**  
F • 5-7 • Fr.



**#24 MEGAN BORNKAMP**  
F • 5-9 • Gr.



**#25 DANI LYNCH**  
D • 5-8 • So.



**#26 ADDY HOLGORSON**  
GK • 5-6 • Jr.



**#27 ERIN SHERDEN**  
F • 5-3 • So.



**#29 JORDAN THOMPSON**  
F • 5-6 • Gr.



**#30 CHRISTIAN BRATHWAITE**  
M • 5-6 • So.



**#34 ALLY LYNCH**  
GK • 5-8 • Sr.



**EDDIE RADWANSKI**  
Head Coach • 14th Season