



# 2024 MATCH NOTES

# CLEMSON WOMEN'S SOCCER

1 COLLEGE CUP • 2 ACC CHAMPIONSHIPS • 6 NCAA QUARTERFINALS • 9 SWEET SIXTEENS • 24 NCAA TOURNAMENTS • 20 ALL-AMERICANS

## Game 15: Clemson Tigers (6-6-2, 2-5-0 ACC) vs NC State Wolfpack (3-9-3, 0-5-2 ACC)

October 20, 2024 • Raleigh, N.C. • Dail Soccer Field/Track Complex

### 2024 Schedule

Date	Day	Network	(Rk.) Opponent	Result/Time (ET)
8/4	Sun.	---	Georgia (exhibition)	-
8/10	Sat.	---	UNCW (exhibition)	-
8/15	Thurs.	SEC	at Auburn	L, 0-4
8/18	Sun.	ACCNX	High Point	W, 2-0
8/23	Fri.	ACCNX	West Virginia	W, 3-0
8/29	Thurs.	ESPN+	at Furman	W, 4-1
9/1	Sun.	ESPN+/FloSports	at Campbell	W, 3-1
9/5	Thurs.	ESPNU	at South Carolina	T, 1-1
9/8	Sun.	ESPN+	at Charlotte	T, 0-0
9/12	Thurs.	ACCNX	* Virginia Tech	L, 1-2
9/19	Thurs.	ACCN	* Duke	L, 1-3
9/28	Sat.	ACCNX	*at Florida State	L, 0-3
10/3	Thurs.	ACCN	*at Pitt	L, 1-4
10/6	Sun.	ACCNX	* Boston College	W, 2-0
10/12	Sat.	ACCNX	* Miami	W, 2-1
10/17	Thurs.	ACCNX	*at #4 North Carolina	L, 0-6
10/20	Sun.	ACCNX	*at NC State	1:00 p.m.
10/25	Fri.	*at	Virginia	7:00 p.m.
10/31	Thurs.	*at	Louisville	7:00 p.m.

\* - ACC Match

Home matches in **BOLD**

### PROGRAM FACTS

Clemson University

Nickname	Tigers
Location	Clemson, S.C.
Colors	Tiger Orange & Regalia
Founded	1889
Enrollment	25,822
President	Dr. James P. Clements (Maryland-Baltimore County '85)
Director of Athletics	Graham Neff (Georgia Tech '06)
Facility/Year (Capacity)	Historic Riggs Field/1915 (6,500)

#### All-Time Stats

Overall Record	351-222-58	30th Season
ACC Record	121-138-25	30th Season
Goals	1,266	43.03/year avg

#### NCAA TOURNAMENT APPEARANCES

24 Total: 1994-2007, 2014-2023

#### SWEET SIXTEEN APPEARANCES

9 Total: 1997-2001, 2006, 2016, 2020, 2023

#### ELITE EIGHT APPEARANCES

6 Total: 1997, 1999, 2000, 2006, 2020, 2023

#### COLLEGE CUP APPEARANCES

1 Total: 2023

### 2024 SEASON STAT LEADERS

#### Season Stat Leaders

GOALS	3 - Christian Brathwaite, Mackenzie Duff, Kendall Bodak
ASSISTS	4 - Jenna Tobia, Dani Davis
POINTS	9 - Kendall Bodak
SHOTS	36 - Jenna Tobia
SAVES	49 - Nona Reason
MINUTES	1113 - Mackenzie Duff

#### Single Game Leaders

GOALS	1 - 12 tied
ASSISTS	2 - Anna Castenfelt
POINTS	3 - 6 tied
SHOTS	6 - Dani Davis, Kendall Bodak
SAVES	10 - Nona Reason

#### Individual Single-Season Records

GOALS	24 - Carmie Landeen	1994
ASSISTS	13 - Sheri Buetter, Renee Guion	1994; 2021
POINTS	57 - Carmie Landeen	1994
SAVES	119 - Ashley Phillips	2006

#### Clemson

Record:	6-6-2
Home:	4-2-0
Away:	2-4-2
Neutral:	0-0-0
Non-Conf.:	4-1-2
ACC Record:	2-5-0

2023 Record: 18-4-4 (7-2-1 ACC)

Head Coach: Eddie Radwanski // 14th season

Assoc. HC: Jeff Robbins // 14th season

Asst. Coach: Siri Mullinix // 14th season

Asst. Coach: Allison Wetherington // 2nd season

#### The Series

CU Record	19-7-4
Last Meeting	2022
Trend	L1
Last match:	L, 1-2

#### NC State

Record:	3-9-3
Home:	2-5-1
Away:	1-4-2
ACC Record:	0-5-2

2023 Record: 3-9-6 (2-5-3 ACC)

Head Coach: Tim Santoro

Assoc. Head Coach: Sebastian Vecchio

Asst. Coach: Maddy Haro

Director of Goalkeeping: Justin Bryant

### Need to Know

#### Program set to celebrate 30 Years of Women's Soccer at Clemson

• The 2024 season will be one for the history books as the program is celebrating 30 Years of women's soccer at Clemson. The 30th anniversary also comes as the athletic department is honoring 50 Years of women's sports at Clemson.

#### Tigers Drop Match 0-6 Against No. 4 North Carolina

• This past Thursday the Tigers dropped their fifth ACC match-up of the season to No. 4 North Carolina. The Tar Heels secured the 0-6 victory as Clemson was unable to find the back of net and was limited to only two shots on goal. Goalkeeper Addy Holgorsen earned her second start of the season and tallied eight total saves.

#### Bodak Leads Tigers in Points, Tobia in Assists

• Freshman Kendall Bodak currently leads the Tigers in points this season as she has nine on the year. Bodak has netted three goals and has been credited with three assists as she continues to dominate in her first season for Clemson. Sophomore Jenna Tobia leads the Tigers in assists as she has tallied four this season.

#### Clemson Set to Travel to Raleigh to Face NC State

• Clemson is set to take on NC State in Raleigh on Sunday, October 20 at the Dail Soccer Field/Track Complex. The match is slated for 1 p.m. and will be streamed on ACCNX.

### TIGERS IN THE PROS

#### Active NWSL/Professional Players

Mariana Speckmaier	Wellington Phoenix FC
Sam Staab	Chicago Red Stars
Kailen Sheridan	San Diego Wave
Sandy MacIver	Manchester City
Tabitha Nyberg	IK Vifjan Strågnås
Hensley Hancuff	North Carolina Courage
Renee Guion	Fortuna Hjørring
Maliah Morris	Western Sydney Wanderers FC
Makenna Morris	Washington Spirit
Hal Hershfeldt	Washington Spirit
Caroline Conti	Bay FC
Halle Mackiewicz	Trelleborgs FF

#### Active National Players

Kailen Sheridan	Canada WNT
Sandy MacIver	England WNT
Mariana Speckmaier	Venezuela WNT
Hal Hershfeldt	USA WNT

# QUICK FACTS

## MEDIA SERVICES

### CLEMSON ATHLETIC COMMUNICATIONS

<b>Women's Soccer Contact</b>	<b>Autumn Froitland</b>
Email	afroitl@clemson.edu
Phone	623-628-7016
<b>Women's Soccer Secondary</b>	<b>Chandler Simpson</b>
Email	mcsimp2@g.clemson.edu
<b>Assoc. AD - Communications</b>	<b>Jeff Kallin</b>
Email	kallin@clemson.edu

### CLEMSON ATHLETICS

<b>Website</b>	ClemsonTigers.com
<b>Ticket Office Phone</b>	1-800-CLEMSON
<b>Social Media</b>	@ClemsonWSoccer (Twitter)
	@ClemsonWSoccer (Instagram)
	@ClemsonTigers (Main Athletics)

### ACC MEDIA RELATIONS

**Brandon McGinnis** is the women's soccer athletic communications contact at the ACC office. He can be reached at 336-369-4642(office) or via email at bmcginnis@theacc.org.

### CREDENTIALS

Members of the working press can request media credentials on a season, or match-by-match, basis. All requests must be sent to **Autumn Froitland** via email. Season credentials may be requested at any point throughout the season. Those interested in a single-match credential must communicate the request at least one day prior to the match.

### INTERVIEW

Interviews are available at any point throughout the week with select players and **Head Coach Eddie Radwanski**. Contact **Autumn Froitland** via phone or email to coordinate all interview requests. Players are available at the discretion of the women's soccer staff upon request.

## THE LAST TIME THE TIGERS...

EVENT	DATE	OPP. (Results, Score)
Scored <b>0</b> goals	10/17/24	vs. North Carolina (L, 0-6)
Scored <b>1</b> goal or more	10/03/24	vs. Pittsburgh (L, 1-4)
Scored <b>2</b> goals or more	10/12/24	vs. Miami (W, 2-1)
Scored <b>3</b> goals or more	09/01/24	vs. Campbell (W, 3-1)
Scored <b>4</b> goals or more	08/29/24	vs. Furman (W, 4-1)
Scored <b>5</b> goals or more	09/30/23	vs. Syracuse (W, 5-1)
Scored <b>6</b> goals or more	08/20/23	vs. Gardner-Webb (W, 9-0)
Scored <b>7</b> goals or more	08/20/23	vs. Gardner-Webb (W, 9-0)
Scored <b>8</b> goals or more	08/20/23	vs. Gardner-Webb (W, 9-0)
Scored <b>9</b> goals or more	08/20/23	vs. Gardner-Webb (W, 9-0)
Scored <b>10</b> goals or more	09/22/13	vs. Alabama A&M (W, 14-0)
Allowed <b>0</b> goals	10/06/24	vs. Boston College (2-0)
Allowed <b>1</b> goal	10/17/24	vs. North Carolina (L, 0-6)
Allowed <b>2</b> goals	10/17/24	vs. North Carolina (L, 0-6)
Allowed <b>3</b> goals	10/17/24	vs. North Carolina (L, 0-6)
Allowed <b>4</b> goals	10/17/24	vs. North Carolina (L, 0-6)
Allowed <b>5</b> goals	10/17/24	vs. North Carolina (L, 0-6)
Scored a goal <b>10:00</b> or earlier	10/12/24	vs. Miami (W, 2-1)
Scored a goal <b>80:00</b> or later	10/12/24	vs. Miami (W, 2-1)
Margin is <b>1</b> goal	10/12/24	vs. Miami (W, 2-1)
Margin is <b>2</b> goals	10/06/24	vs. Boston College (2-0)
Margin is <b>3+</b> goals	08/29/24	vs. Furman (W, 4-1)
<b>3 or more</b> Clemson players scored	08/29/24	vs. Furman (W, 4-1) 4 players
Attempted <b>0-9</b> shots or more	10/12/24	vs. Miami (W, 2-1) 6 shots
Attempted <b>10-19</b> shots or more	09/08/24	vs. Charlotte (T, 0-0) 11 shots
Attempted <b>20-29</b> shots or more	08/29/24	vs. Furman (W, 4-1) 23 shots
Attempted <b>30+</b> shots	08/20/23	vs. Gardner-Webb (W, 9-0) 40 shots
Allowed <b>0-9</b> shots	09/12/24	vs. Virginia Tech (L, 1-2) 8 shots
Allowed <b>10-19</b> shots	10/06/24	vs. Boston College (2-0) 19 shots
Allowed <b>20-29</b> shots	10/17/24	vs. North Carolina (L, 0-6) 24 shots
Allowed <b>30+</b> shots	09/27/12	vs. Duke (L, 0-3) 31 shots
Won in OT/2OT	04/03/21	vs. Alabama (W, 1-0 [OT])
Lost in OT/2OT	10/10/21	vs. Notre Dame (L, 1-2 [2OT])
Tied in OT/2OT	11/19/23	vs. Georgia (T-1-1 [CU advances 5-3 on PKs])
Competed in a <b>PK Shootout</b>	11/19/23	vs. Georgia (T-1-1 [CU advances 5-3 on PKs])
Won a <b>PK Shootout</b>	11/19/23	vs. Georgia (T-1-1 [CU advances 5-3 on PKs])
Played <b>13+</b> players	09/08/24	vs. Charlotte (T, 0-0) 15 players
Played <b>16+</b> players	10/12/24	vs. Miami (W, 2-1) 17 players
Played <b>18+</b> players	10/03/24	vs. Pittsburgh (L, 1-4) 19 players
Beat a United Soccer Coach <b>No. 1</b> team	09/13/00	vs. North Carolina (W, 2-1)
Beat a United Soccer Coach <b>Top 5</b> team	09/19/24	vs. Duke (L, 1-3) #3
Beat a United Soccer Coach <b>Top 10</b> team	09/28/24	vs. Florida State (L, 0-3) #7
Beat a United Soccer Coach <b>Top 25</b> team	10/22/23	vs. Pitt (W, 1-0) - #18

## ACC PRESEASON COACHES POLL

Team	Points (First-Place Votes)
1. Florida State	255 (15)
2. Stanford	235 (2)
3. Notre Dame	211
4. North Carolina	187
5. Clemson	186
6. Virginia	177
7. Duke	175
8. Pitt	168
9. Wake Forest	160
10. Virginia Tech	116
11. Cal	111
12. NC State	85
13. Louisville	80
14(t). Boston College	50
14(t). SMU	50
16. Miami	44
17. Syracuse	22

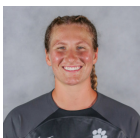
## TIGERS IN THE POLLS

Week	USC	TDS	RPI
Preseason	#5	-	-
Week One	RV	#16	-
Week Two	RV	#13	-
Week Three	#25	#11	-
Week Four	NR	#18	-
Week Five	NR	NR	#41
Week Six	NR	NR	#42
Week Seven	NR	NR	#45
Week Eight	NR	NR	#41
Week Nine	NR	NR	#35



# 2024 CLEMSON TIGERS WOMEN'S SOCCER

1



## NONA REASON (REE-zin)

R-So. • Goalkeeper • 5-10 • Noblesville, Ind. • North Carolina

	GMS	STARTS	SAVES	GA	SAVE %	SHUTOOTS	W/L/T
2024	11	11	49	16	.754	3	5/5/1
Career (CU-UNC)	13	12	51	17	.750	5	7/5/1

Season Highs: Saves (51) \*shutouts are solo

- Played in first match for Clemson against Auburn
- Transfer from North Carolina
- Member of the 2021 U.S. Soccer Women's Youth National U20 training camp roster
- Played on the 2020 U.S. U16 national team
- Received the Golden Glove award as the best goalkeeper during the 2019 U15 U.S. Soccer Development Academy playoffs for San Diego Surf

2



## KENDALL BODAK

Fr. • Midfield • 5-2 • Monson, Mass.

	GMS	STARTS	GOALS	ASSISTS	POINTS	SOG
2024	14	12	3	3	9	9
Career	14	12	3	3	9	9

Season Highs: Goals (3), Assists (3), Points (9), Shots on Goal (9)

- Earned first collegiate start against Auburn
- Scored her first collegiate against West Virginia

3



## LAYNE ST. GEORGE ("LANE")

Sr. • Defender • 5-5 • Seattle, Wash.

	GMS	STARTS	GOALS	ASSISTS	POINTS	SOG
2024	10	1	--	--	--	--
Career	49	22	0	2	2	4

Season Highs: Goals (1), Assists (1), Points (1), Shots on Goal (1)

- 2x All-ACC Academic Team
- 2021 Gatorade Washington Girls Soccer Player of the Year
- Member of the U.S. U-17 WNT player pool (UEFA Development Tournament in Prague, Czech Republic) that was crowned 2019 Champions
- Part of the program's first-ever College Cup appearance in the 2023 season

5



## EMILY BROUGH (BRUFF)

Jr. • Midfield • 5-8 • Liverpool, England

	GMS	STARTS	GOALS	ASSISTS	POINTS	SOG
2024	12	10	--	1	1	2
Career	55	26	4	5	13	19

Season Highs: Goals (1), Assists (1), Points (1), Shots on Goal (2)

- 2x All-ACC Academic Team
- Liverpool Sport Woman of the Year (prior to Clemson)
- Made her professional debut for Liverpool FC and is the second youngest player to play for the club
- Part of the program's first-ever College Cup appearance in the 2023 season

6



## ELEANOR HAYS

So. • Defender • 5-9 • Lewisville, Texas

	GMS	STARTS	GOALS	ASSISTS	POINTS	SOG
2024	12	5	--	1	--	1
Career	13	5	0	1	0	1

Season Highs: Goals (1), Assists (1), Points (1), Shots on Goal (1)

- Earned first collegiate start against Auburn
- Part of the program's first-ever College Cup appearance in the 2023 season

7



## DANI DAVIS

So. • Midfield • 5-9 • Port Washington, N.Y.

	GMS	STARTS	GOALS	ASSISTS	POINTS	SOG
2024	10	10	1	3	5	9
Career	36	36	2	11	15	20

Season Highs: Goals (1), Assists (2), Points (4), Shots on Goal (9)

- ACC All Tournament Team Selection
- ACC All-Freshman Team Selection
- All-ACC Academic Team Selection
- Top Drawer Soccer Freshman Best XI First Team
- Midseason Top 100 Freshman (4)
- Member of Tiger Leadership Academy
- Part of the program's first-ever College Cup appearance in the 2023 season

8



## JENNA TOBIA (TOE-bee-uh)

So. • Forward • 5-5 • Warren, N.J.

	GMS	STARTS	GOALS	ASSISTS	POINTS	SOG
2024	14	14	2	4	8	14
Career	38	37	6	12	24	30

Season Highs: Goals (2), Assists (4), Points (8), Shots on Goal (14)

- ACC All-Freshman Team Selection
- All-ACC Academic Team Selection
- Top Drawer Soccer Freshman Best XI Freshman First Team Selection
- Midseason Top 100 Freshman (7)
- Part of the program's first-ever College Cup appearance in the 2023 season

9



## MACKENZIE DUFF

Sr. • Defender • 5-11 • St. Louis, Mo.

	GMS	STARTS	GOALS	ASSISTS	POINTS	SOG
2024	14	13	3	--	6	6
Career	57	38	9	1	19	12

Season Highs: Goals (3), Assists (1), Points (6), Shots on Goal (6)

- 2x All-ACC Academic Team
- ACC All-Tournament Team Selection
- ACC Player of the Week (9/26/23)
- Part of the program's first-ever College Cup appearance in the 2023 season

10



## RENEE LYLES (Rhymes with "Miles")

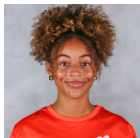
Sr. • Forward • 5-5 • Atlanta, Ga.

	GMS	STARTS	GOALS	ASSISTS	POINTS	SOG
2023	26	16	6	5	17	21
Career	62	51	17	13	47	59

Season Highs: Goals (1), Assists (1), Points (1), Shots on Goal (1)

- 3x All-ACC Academic Team
- ACC Player of the Week (10/24/23)
- ACC All-Freshman Team (2021)
- Part of the program's first-ever College Cup appearance in the 2023 season

11



## TATUM SHORT

So. • Forward • 5-5 • Las Vegas, Nev.

	GMS	STARTS	GOALS	ASSISTS	POINTS	SOG
2024	14	6	--	--	--	4
Career	40	28	3	4	10	19

Season Highs: Goals (1), Assists (1), Points (1), Shots on Goal (4)

- ACC All-Freshman Team Selection
- Top Drawer Soccer Midseason Top 100 Freshman Selection (22)
- Member of Tiger Leadership Academy
- Part of the program's first-ever College Cup appearance in the 2023 season

12



## SYDNEY MINARIK (min-AIR-ick)

So. • Forward • 5-5 • Las Vegas, Nev.

	GMS	STARTS	GOALS	ASSISTS	POINTS	SOG
2024	14	13	--	1	--	--
Career	71	30	5	5	14	18

Season Highs: Goals (1), Assists (1), Points (1), Shots on Goal (1)

- 2x All-ACC Academic Team Selection
- Part of the 2023-24 POWER Women's Leadership Academy
- Member of Paw Pals
- Member of Student Athlete Advisory Committee (SAAC)
- Part of the program's first-ever College Cup appearance in the 2023 season

# 2024 CLEMSON TIGERS WOMEN'S SOCCER

13



## KAM PICKETT

Gr. • Defender • 5-0 • Santa Barbara, Calif. • Pepperdine

	GMS	STARTS	GOALS	ASSISTS	POINTS	SOG
2024	14	13	--	2	2	1
Career (CU+PEP)	63	61	1	4	6	7

**Season Highs:** Goals (1), Assists (2), Points (2), Shots on Goal (1)

- Played in first match for Clemson against Auburn
- Transfer from Pepperdine
- 2022 All-WCC Honorable Mention
- 2021 WCC All-Freshman Team
- Pepperdine Scholar-Athlete

15



## ELLA JOHNSON

Fr. • Forward • 5-5 • Wrightsville Beach, N.C.

	GMS	STARTS	GOALS	ASSISTS	POINTS	SOG
2024	13	1	--	--	--	1
Career	13	1	--	--	--	1

**Season Highs:** Goals (1), Assists (1), Points (1), Shots on Goal (1)

- Played in first match for Clemson against Auburn

16



## ELLA HAUSER (WHO-zer)

Sr. • Defender • 5-5 • Seattle, Wash.

	GMS	STARTS	GOALS	ASSISTS	POINTS	SOG
2024	13	1	--	--	--	--
Career	37	3	0	0	0	0

**Season Highs:** Goals (1), Assists (1), Points (1), Shots on Goal (1)

- Mother Sheri (Bueter) was an All-American for Clemson women's soccer and the program's all-time assists leader
- Father Scott played on the baseball team at Clemson
- Brother Nolan is a freshman kicker for the Clemson football team
- Part of the program's first-ever College Cup appearance in the 2023 season

17



## ANNA CASTENFELT (Cast-IN-felt)

Fr. • Midfield • 5-7 • Paradise Valley, Ariz.

	GMS	STARTS	GOALS	ASSISTS	POINTS	SOG
2024	13	10	1	3	5	6
Career	13	10	1	3	5	6

**Season Highs:** Goals (1), Assists (3), Points (5), Shots on Goal (6)

- Played in first match for Clemson against Auburn
- Had her first collegiate start against West Virginia

18



## MARIA MANOUSOS (Ma-NEW-sos)

Jr. • Forward • 5-6 • Weddington, N.C.

	GMS	STARTS	GOALS	ASSISTS	POINTS	SOG
2024	14	12	2	3	7	5
Career	53	16	6	5	17	13

**Season Highs:** Goals (2), Assists (3), Points (7), Shots on Goal (5)

- Part of the program's first-ever College Cup appearance in the 2023 season

19



## ANNA RYDIN (RIE-din)

Fr. • Defender • 6-0 • Chapel Hill, N.C.

	GMS	STARTS	GOALS	ASSISTS	POINTS	SOG
2024	2	--	--	--	--	--
Career	2	--	--	--	--	--

**Season Highs:** Goals (1), Assists (1), Points (1), Shots on Goal (1)

21



## EMILIA ERIKSEN

Fr. • Defender • 5-7 • Los Gatos, Calif.

	GMS	STARTS	GOALS	ASSISTS	POINTS	SOG
2024	9	--	--	--	--	--
Career	9	--	--	--	--	--

**Season Highs:** Goals (1), Assists (1), Points (1), Shots on Goal (1)

- Played in first match for Clemson against Auburn

22



## GABBY GAMBINO (Gam-BEE-no)

Jr. • Midfield • 5-5 • Lewiston, N.Y.

	GMS	STARTS	GOALS	ASSISTS	POINTS	SOG
2023	8	2	0	2	2	1
Career	15	2	0	2	2	4

**Season Highs:** Goals (1), Assists (1), Points (1), Shots on Goal (1)

- Part of the program's first-ever College Cup appearance in the 2023 season

23



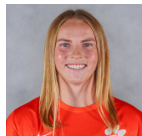
## ALLIE SERLENGA (SIR-ling-uh)

Fr. • Forward • 5-7 • Mount Laurel, N.J.

	GMS	STARTS	GOALS	ASSISTS	POINTS	SOG
2024	9	--	--	--	--	1
Career	9	--	--	--	--	1

**Season Highs:** Goals (1), Assists (1), Points (1), Shots on Goal (1)

24



## MEGAN BORNKAMP

Gr. • Forward • 5-9 • Mooresville, N.C.

	GMS	STARTS	GOALS	ASSISTS	POINTS	SOG
2024	10	8	2	1	5	9
Career	91	89	26	21	73	74

**Season Highs:** Goals (2), Assists (1), Points (5), Shots on Goal (9)

- 4x All-ACC (Third Team in 2023)
- ACC Postgraduate Scholar
- Third Team All-America (2021)
- 4x All-ACC Academic Team
- Part of the program's first-ever College Cup appearance in the 2023 season
- Part of the 2022-23 POWER Women's Leadership Academy

25



## DANI LYNCH

So. • Defender • 5-7 • Los Angeles, Calif.

	GMS	STARTS	GOALS	ASSISTS	POINTS	SOG
2024	1	--	--	--	--	--
Career	6	0	0	1	1	0

**Season Highs:** Goals (1), Assists (1), Points (1), Shots on Goal (1)

- Sister, Ally, also plays for the Tigers
- Part of the program's first-ever College Cup appearance in the 2023 season

# 2024 CLEMSON TIGERS WOMEN'S SOCCER

26



## ADDY HOLGORSE

Jr. • Goalkeeper • 5-6 • Charlotte, N.C.

	GMS	STARTS	SAVES	GA	SAVE %	SHUTOUTS	W/L/T
2024	4	2	10	7	.588	1	0/1/1
Career	6	3	10	8	.556	2	1/1/1

**Season Highs:** Saves (1), Goals ( ), Assists ( ) \*shutouts are solo

- Part of the program's first-ever College Cup appearance in the 2023 season

27



## ERIN SHERDEN (SURE-din)

So. • Forward • 5-3 • Melbourne, Fla.

	GMS	STARTS	GOALS	ASSISTS	POINTS	SOG
2024	10	--	--	--	--	--
Career	10	--	--	--	--	--

**Season Highs:** Goals ( ), Assists ( ), Points ( ), Shots on Goal ( )

- Played in first match for Clemson against Auburn
- Part of the program's first-ever College Cup appearance in the 2023 season

29



## JORDAN THOMPSON

Gr. • Forward • 5-6 • Lee, N.H. • College of Charleston

	GMS	STARTS	GOALS	ASSISTS	POINTS	SOG
2024	5	--	1	--	2	2
Career (CU+CoFC)	26	3	2	0	4	8

**Season Highs:** Goals (1), Assists ( ), Points (2), Shots on Goal (2)

- Transfer from College of Charleston

30



## CHRISTIAN BRATHWAITE (Br-ATH-wait)

So. • Midfield • 5-6 • Charlotte, N.C. • Georgia

	GMS	STARTS	GOALS	ASSISTS	POINTS	SOG
2024	13	10	3	--	6	4
Career (CU+UGA)	33	19	4	1	9	7

**Season Highs:** Goals (3), Assists ( ), Points (6), Shots on Goal (4)

- Played in first match for Clemson against Auburn
- Transfer from Georgia
- Ranked No. 70 on Top Drawer Soccer Top 100 Midseason Freshman List
- Named to SEC Academic Honor Roll, Dean's List, and J. Reid Parker Director of Athletics Honor Roll

34



## ALLY LYNCH

Sr. • Goalkeeper • 5-8 • Los Angeles, Calif.

	GMS	STARTS	SAVES	GA	SAVE %	SHUTOUTS	W/L/T
2024	2	1	1	1	.250	0	1/0/0
Career	7	1	2	3	.400	0	1/0/0

**Season Highs:** Goals ( ), Assists ( ), Points ( ), Shots on Goal ( )

- Earned first career start against Furman
- Sister, Dani, also plays for the Tigers
- Part of the program's first-ever College Cup appearance in the 2023 season
- Part of the 2023-24 POWER Women's Leadership Academy

## COACHES AND STAFF



## EDDIE RADWANSKI (Rad-wan-skee)

Head Coach  
14th season  
2016 ACC Coach of the Year  
Clemson Record: 149-90-35  
Overall Record: 288-155-48



## JEFF ROBBINS

Associate Head Coach  
14th season



## SIRI MULLINIX

Assistant/Goalkeeper Coach  
14th season



## ALLISON WETHERINGTON

Assistant Coach  
2nd season



**2024-25 Clemson Women's Soccer  
Individual Statistics  
All games**

**Game Records**

Overall	Conference	Home	Away	Neutral
6 - 5 - 2	2 - 4 - 0	4 - 2 - 0	2 - 3 - 2	0 - 0 - 0

**Team Box Score**

No.	Player	GP-GS	MIN	G	A	PTS	SH	SH%	SOG	SOG%	YC	RC	GWG	PK-ATT	FG	OT	HAT	GTG	FOUL
2	Bodak, Kendall	13-11	907	3	3	9	27	.111	11	.407	0	0	1	0-0	1	0	0	0	7
8	Tobia, Jenna	13-13	921	2	4	8	36	.056	13	.361	0	0	0	0-0	0	0	0	0	7
18	Manousos, Maria	13-12	843	2	3	7	8	.250	5	.625	0	0	2	0-0	0	0	0	0	5
30	Brathwaite, Christian	12-8	799	3	0	6	11	.273	3	.273	0	0	1	0-0	0	0	0	1	9
9	Duff, Mackenzie	13-12	1113	3	0	6	9	.333	6	.667	0	0	1	0-0	1	0	0	0	4
7	Davis, Dani	10-10	835	1	4	6	19	.053	9	.474	1	0	0	1-1	0	0	0	0	6
24	Bornkamp, Megan	10-8	588	2	1	5	24	.083	9	.375	1	0	0	0-0	1	0	0	0	11
17	Castenfelt, Anna	12-9	646	1	3	5	9	.111	6	.667	0	0	0	0-0	1	0	0	0	5
29	Thompson, Jordan	5-0	79	1	0	2	2	.500	2	1.000	0	0	0	0-0	0	0	0	0	1
13	Pickett, Kam	13-12	923	0	2	2	6	.000	1	.167	1	0	0	0-0	0	0	0	0	6
5	Brough, Emily	11-10	729	0	1	1	5	.000	2	.400	0	0	0	0-0	0	0	0	0	4
6	Hays, Eleanor	11-4	429	0	1	1	2	.000	1	.500	0	0	0	0-0	0	0	0	0	4
12	Minarik, Sydney	13-12	839	0	1	1	0	.000	0	.000	1	0	0	0-0	0	0	0	0	1
11	Short, Tatum	13-6	709	0	0	0	12	.000	4	.333	1	0	0	0-0	0	0	0	0	6
15	Johnson, Ella	12-1	269	0	0	0	4	.000	1	.250	0	0	0	0-0	0	0	0	0	4
23	Serlenga, Allie	8-0	127	0	0	0	2	.000	1	.500	0	0	0	0-0	0	0	0	0	2
16	Hauser, Ella	12-1	267	0	0	0	1	.000	0	.000	0	0	0	0-0	0	0	0	0	2
21	Erikson, Emilia	8-0	254	0	0	0	1	.000	0	.000	0	0	0	0-0	0	0	0	0	1
1	Reason, Nona	11-11	900	0	0	0	0	.000	0	.000	0	0	0	0-0	0	0	0	0	0
34	Lynch, Ally	2-1	90	0	0	0	0	.000	0	.000	0	0	0	0-0	0	0	0	0	0
27	Sherden, Erin	9-0	183	0	0	0	0	.000	0	.000	0	0	0	0-0	0	0	0	0	1
19	Rydin, Anna	2-0	29	0	0	0	0	.000	0	.000	0	0	0	0-0	0	0	0	0	1
3	St. George, Layne	9-1	216	0	0	0	0	.000	0	.000	1	0	0	0-0	0	0	0	0	2
26	Holgorsen, Addy	3-1	180	0	0	0	0	.000	0	.000	0	0	0	0-0	0	0	0	0	0
25	Lynch, Dani	1-0	7	0	0	0	0	.000	0	.000	0	0	0	0-0	0	0	0	0	0
<b>Total</b>		<b>13</b>	<b>-</b>	<b>20</b>	<b>23</b>	<b>63</b>	<b>178</b>	<b>.112</b>	<b>74</b>	<b>.416</b>	<b>6</b>	<b>0</b>	<b>-</b>	<b>1-1</b>	<b>5</b>	<b>0</b>	<b>0</b>	<b>-</b>	<b>89</b>
<b>Opponents</b>		<b>13</b>	<b>-</b>	<b>20</b>	<b>17</b>	<b>57</b>	<b>117</b>	<b>.171</b>	<b>70</b>	<b>.598</b>	<b>8</b>	<b>1</b>	<b>-</b>	<b>0-0</b>	<b>7</b>	<b>0</b>	<b>0</b>	<b>-</b>	<b>117</b>

No.	Goalie	GP-GS	Goal Average			Saves		Record			
			MINS	GA	GA AVG	SAVES	PCT	W	L	T	SHO/CBO
1	Reason, Nona	11-11	900:00	16	1.60	49	.754	5	5	1	3/0
34	Lynch, Ally	2-1	90:00	3	3.00	1	.250	1	0	0	0/0
26	Holgorsen, Addy	3-1	180:00	1	0.50	2	.667	0	0	1	1/0
TM	TEAM	-	00:00	0	0.00	0	.000	0	0	0	0/0
<b>Total</b>		<b>13</b>	<b>1170:00</b>	<b>20</b>	<b>1.54</b>	<b>52</b>	<b>.722</b>	<b>6</b>	<b>5</b>	<b>2</b>	<b>4</b>
<b>Opponents</b>		<b>13</b>	<b>1170:00</b>	<b>20</b>	<b>1.54</b>	<b>56</b>	<b>.737</b>	<b>5</b>	<b>6</b>	<b>2</b>	<b>3</b>

**Goals by Periods**

Team	1st	2nd	OT1	OT2	TOTAL
CU	12	8	0	0	20
Opponents	9	11	0	0	20

**Corners by Periods**

Team	1st	2nd	OT1	OT2	TOTAL
CU	31	34	0	0	65
Opponents	24	25	0	0	49



# 2024 CLEMSON TIGERS WOMEN'S SOCCER



**#1 NONA REASON**  
GK • 5-10 • R-So.



**#2 KENDALL BODAK**  
M • 5-2 • Fr.



**#3 LAYNE ST. GEORGE**  
D • 5-5 • Sr.



**#5 EMILY BROUGH**  
M • 5-8 • JR.



**#6 ELEANOR HAYS**  
D • 5-9 • So.



**#7 DANI DAVIS**  
M • 5-9 • So.



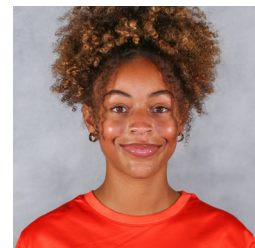
**#8 JENNA TOBIA**  
F • 5-5 • So.



**#9 MACKENZIE DUFF**  
D • 5-11 • Sr.



**#10 RENEE LYLES**  
F • 5-5 • Sr.



**#11 TATUM SHORT**  
F • 5-5 • So.



**#12 SYDNEY MINARIK**  
F • 5-4 • Sr.



**#13 KAM PICKETT**  
D • 5-0 • Gr.



**#15 ELLA JOHNSON**  
F • 5-5 • Fr.



**#16 ELLA HAUSER**  
M • 5-6 • Sr.



**#17 ANNA CASTENFELT**  
M • 5-7 • Fr.



**#18 MARIA MANOUSOS**  
F • 5-6 • Jr.



**#19 ANNA RYDIN**  
D • 6-0 • Fr.



**#21 EMILIA ERIKSEN**  
D • 5-7 • Fr.



**#22 GABBY GAMBINO**  
M • 5-5 • Jr.



**#23 ALLIE SERLENGA**  
F • 5-7 • Fr.



**#24 MEGAN BORNKAMP**  
F • 5-9 • Gr.



**#25 DANI LYNCH**  
D • 5-8 • So.



**#26 ADDY HOLGORSON**  
GK • 5-6 • Jr.



**#27 ERIN SHERDEN**  
F • 5-3 • So.



**#29 JORDAN THOMPSON**  
F • 5-6 • Gr.



**#30 CHRISTIAN BRATHWAITE**  
M • 5-6 • So.



**#34 ALLY LYNCH**  
GK • 5-8 • Sr.



**EDDIE RADWANSKI**  
Head Coach • 14th Season