

ElectricFlow 9.0

DevOps Foresight Installation and User Guide

Electric Cloud, Inc.
125 South Market Street, Suite 400
San Jose, CA 95113
www.electric-cloud.com



ElectricFlow version 9.0

Copyright © 2002–2019 Electric Cloud, Inc. All rights reserved.

Published 3/11/2019 2:00:55 AM

Electric Cloud® believes the information in this publication is accurate as of its publication date. The information is subject to change without notice and does not represent a commitment from the vendor.

THE INFORMATION IN THIS PUBLICATION IS PROVIDED “AS IS.” ELECTRIC CLOUD, INCORPORATED MAKES NO REPRESENTATIONS OR WARRANTIES OF ANY KIND WITH RESPECT TO THE INFORMATION IN THIS PUBLICATION AND SPECIFICALLY DISCLAIMS IMPLIED WARRANTIES OF MERCHANTABILITY OR FITNESS FOR A PARTICULAR PURPOSE.

Use, copying, and distribution of any ELECTRIC CLOUD software described in this publication requires an applicable software license.

Copyright protection includes all forms and matters of copyrightable material and information now allowed by statutory or judicial law or hereinafter granted, including without limitation, material generated from software programs displayed on the screen such as icons and screen display appearance.

The software and/or databases described in this document are furnished under a license agreement or nondisclosure agreement. The software and/or databases may be used or copied only in accordance with terms of the agreement. It is against the law to copy the software on any medium except as specifically allowed in the license or nondisclosure agreement.

Trademarks

Electric Cloud, ElectricAccelerator, ElectricAccelerator Huddle, ElectricCommander, ElectricFlow, ElectricFlow Deploy, ElectricFlow DevOps Foresight, ElectricFlow DevOps Insight, ElectricFlow Release, ElectricInsight, and Electric Make are registered trademarks or trademarks of Electric Cloud, Incorporated.

Most Electric Cloud products—ElectricAccelerator, ElectricAccelerator Huddle, ElectricCommander, ElectricFlow, ElectricFlow Deploy, ElectricFlow DevOps Foresight, ElectricFlow Release, ElectricInsight, and Electric Make—are commonly referred to by their “short names”—Accelerator, Huddle, Commander, Flow, Deploy, Foresight, Release, Insight, and eMake—throughout various types of Electric Cloud product-specific documentation.

All other trademarks used herein are the property of their respective owners.

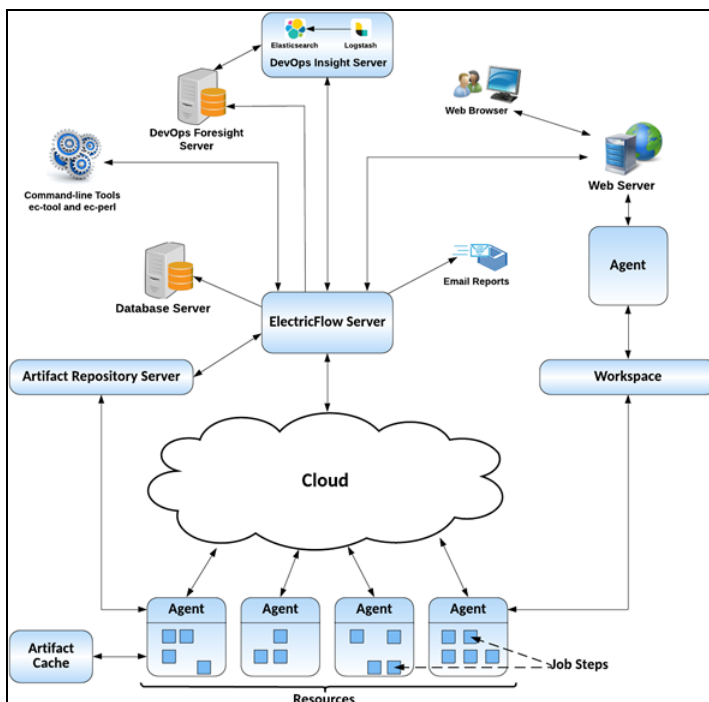
Contents

Chapter 1: Introduction to DevOps Foresight	4
License Requirements	4
Chapter 2: System Requirements and Supported Platforms	6
Supported Server Platforms	6
Software Licenses	6
Chapter 3: Installing DevOps Foresight	8
Prerequisites	8
System Considerations for DevOps Foresight Server Installation	8
Graphical User Interface Installation	9
Interactive Command-Line Installation	16
Silent Unattended Installation	19
Chapter 4: Configuration	22
Configure DevOps Foresight in ElectricFlow	22
Configure Data Collection	23

Chapter 1: Introduction to DevOps Foresight

DevOps Foresight is a predictive analytics solution that works by performing machine learning on the mountains of data collected from key parts of the DevOps tool chain. Using self-adjusting algorithms, DevOps Foresight is capable of deeply analyzing data already present in the entire DevOps tool chain, from application life cycle management (ALM) all the way to information technology (IT) service management tools, to identify the patterns hidden in that data that predict the success or failure of builds, tests, deployments, or overall releases.

Within the Electric Flow enterprise, the DevOps Foresight server collects data from the DevOps Insight server for use in running analytics for CI risk predictions.



License Requirements

ElectricFlow DevOps Foresight requires a separate license to use with ElectricFlow 8.4. Please contact Electric Cloud support team for more details.

Chapter 2: System Requirements and Supported Platforms

This section describes hardware and software specifications and configurations for installing and running the DevOps Foresight server on Windows or UNIX systems. All version requirements for operating systems and databases are routinely tested and fully supported by Electric Cloud. Contact Electric Cloud technical support if you have any questions regarding newer software versions.

Supported Server Platforms

DevOps Foresight has been tested on these platforms:

- Windows Server 2008
- Ubuntu v18.04

Minimum hardware requirements:

- Processor clock rate: 2.5 GHz or higher
- Memory: minimum 16GB available RAM
- Processors: 4 core CPU

Software Licenses

After installation, your enterprise DevOps Foresight license active. To see your software usage entitlements, go to the **Licenses** page in the Automation Platform web UI. To do so, browse to `https://<ElectricFlow_server>/commander/`, and then click **Administration > Licenses**.

For information about how to import licenses, delete licenses, and view license usage statistics, see the “Licenses” section in the “Automation Platform” chapter of the *ElectricFlow User Guide* at http://docs.electric-cloud.com/eflow_doc/FlowIndex.html. The section also discusses the various types of licensing, which is based on concurrent steps, concurrent hosts, concurrent users, proxied hosts, registered hosts and users, and creation of applications and microservices.

Chapter 3: Installing DevOps Foresight

This section describes the methods for installing the DevOps Foresight server in a new environment.

- [Graphical User Interface Installation on page 9](#)
- [Interactive Command-Line Installation on page 16](#)
- [Silent Unattended Installation on page 19](#)

Prerequisites

Before starting the DevOps Foresight server installation, the DevOps Insight server must be installed and collecting data. In addition, you need the following in order to complete the DevOps Foresight installation:

- DevOps Foresight server license—this server is licensed separately from ElectricFlow and DevOps Insight.
- DevOps Insight host name and port number
- DevOps Insight Elasticsearch port number
- DevOps Insight server user name and password
- Electric Flow server host name, user name, and password

System Considerations for DevOps Foresight Server Installation

General considerations

For a production environment, Electric Cloud recommends that you install the DevOps Foresight server on a system other than systems running other ElectricFlow components (such as the ElectricFlow server, web server, repository server, or agent). If you must install it on the same system (such as for testing or other non-production or trial-basis situations) see for details.

System-level considerations

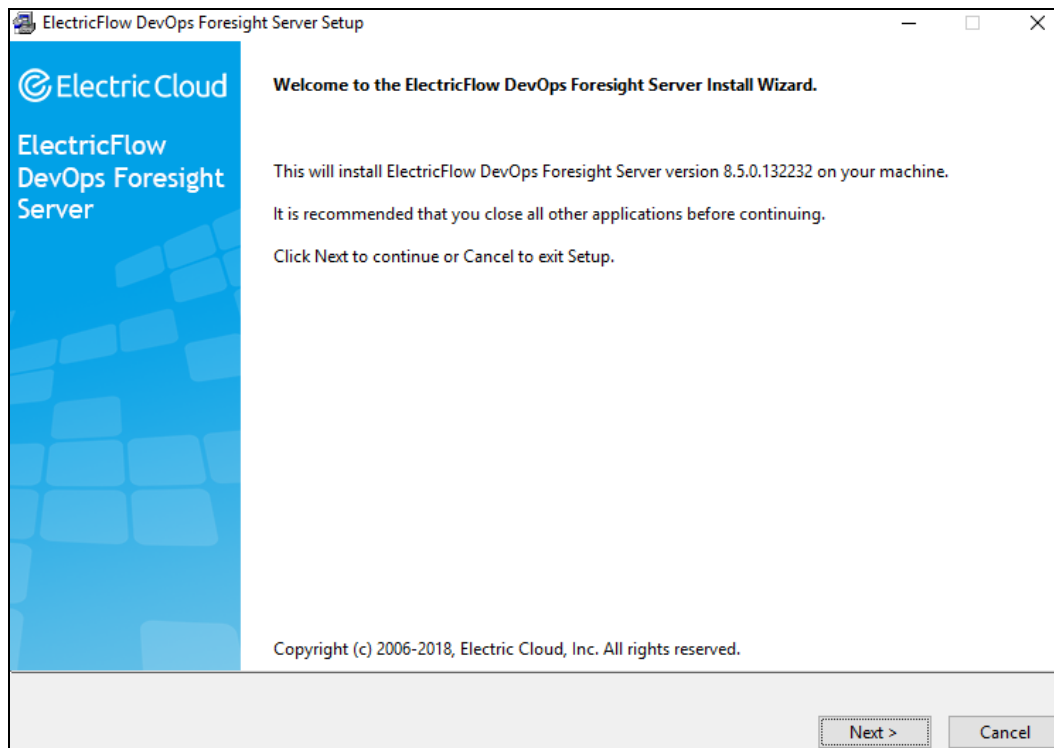
Windows Server 2008	<ul style="list-style-type: none"> In cases where the installer runs under account <i>x</i>, but services will run under account <i>y</i>, the system administrator may need to disable User Account Control (UAC) so that user <i>y</i> has access to the installation directories, both program and data. This applies particularly to data directories.
Ubuntu 18.04 (64-bit)	<ul style="list-style-type: none"> Choosing the Ubuntu User Do not choose <code>nobody</code> for the Ubuntu user. Ubuntu does not allow a command such as <code>su - nobody -c foo.sh</code>, because it is not a shell account. Fixing the <code>raise ValueError, 'need a file or string'</code> error If you receive an error during installation similar to the following, <pre>File "/usr/lib/lsb/install_initd", line 3, in <module> import sys, re, os, initdutils File "/usr/lib/lsb/initdutils.py", line 18 raise ValueError, 'need a file or string ^ SyntaxError: invalid syntax</pre> <p>run the following command:</p> <pre>sudo sed -i "s/python3/python/" /usr/lib/lsb/install_initd</pre> <p>This error is a known Ubuntu bug.</p>

Graphical User Interface Installation

The graphical user interface installation method is supported by Windows platforms and Linux platforms running the X Window System.

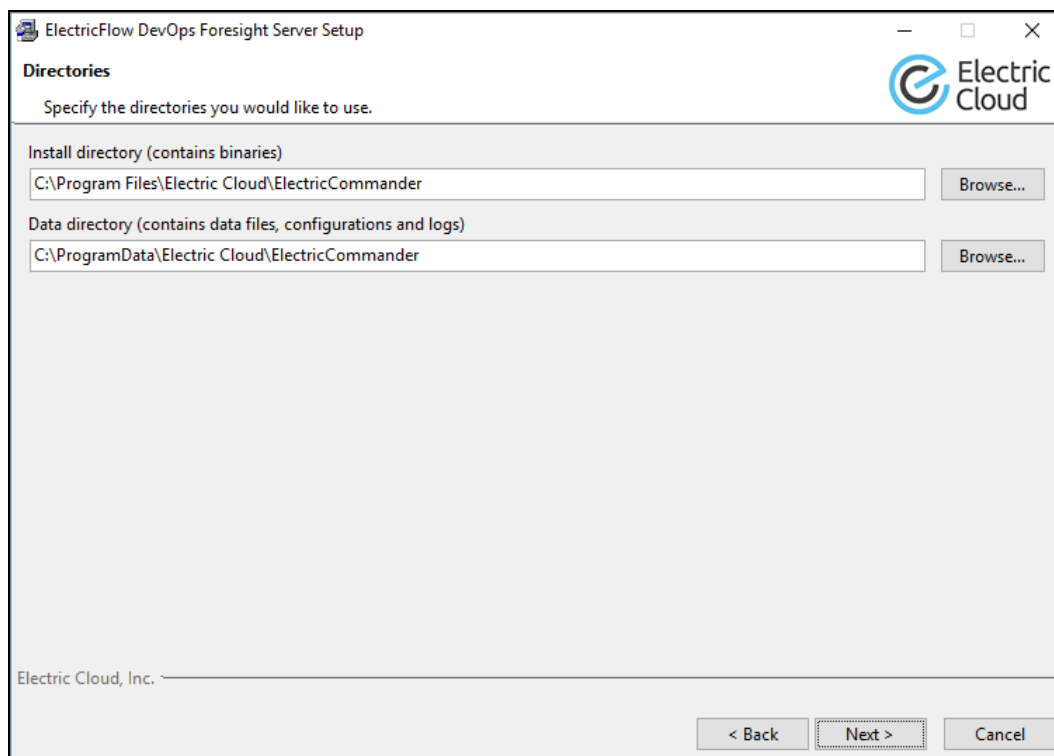
- Double-click the following file to run the full installer.
 - Linux:** `ElectricFlowDevOpsForesightServer-x64-<version>`
 - Windows:** `ElectricFlowDevOpsForesightServer-x64-<version>.exe`

The **Welcome to the ElectricFlow DevOps Foresight Server Install Wizard** screen appears:



2. Click **Next** to continue.

The **Directories** screen appears. The installer uses the default directories to install files and components:



- Click **Next** to continue, or click **Browse** to specify different directory locations.

The **Service Account** screen appears:

Windows systems:

Linux systems:

The image displays two side-by-side screenshots of the 'Service Account' configuration window for ElectricFlow DevOps Foresight Server Setup.

Left Screenshot (Windows systems):

- Title: ElectricFlow DevOps Foresight Server Setup
- Section: Service Account
- Instruction: Specify the account the service for ElectricFlow DevOps Foresight Serv
- Fields:
 - User name: system
 - Password: [Empty]
 - Domain (leave blank for local users): [Empty]
- Checkbox: Use the local system account
- Footer: Electric Cloud, Inc.

Right Screenshot (Linux systems):

- Title: ElectricFlow DevOps Foresight Server Setup
- Section: Service Account
- Instruction: Specify the user the service for ElectricFlow DevOps Foresight Server will run as.
- Fields:
 - User name: build
 - Group name: build
- Button: < Back
- Footer: Electric Cloud, Inc.

- Complete the information on the screen as follows:

Windows systems:

- **User Name**—Name of the user who will run the ElectricFlow DevOps Foresight server services.
- **Password**—Password of the user who will run the ElectricFlow DevOps Foresight server services.
- **Domain**—Domain name information for the user. For example, electric-cloud.com. Leave this field blank if this is a local user.
- **Use the local system account**—Determines if the ElectricFlow DevOps Foresight server services will run as the local Windows system account.

Linus systems:

- **User Name**—Name of the user who owns the ElectricFlow DevOps Foresight server processes.
- **Group Name**—Name of the group who owns the ElectricFlow DevOps Foresight server processes.

- Click **Next** to continue.

The **Configure Service** screen appears:

Hostname or IP address—Name of the host that will be used to access the installed ElectricFlow DevOps Foresight server.

DevOps Foresight server port—Port number to be used to access the DevOps Foresight server.

The DevOps Foresight server uses the Elasticsearch search engine from the DevOps Insight Server to gather data from the ElectricFlow server for use in its various dashboards. Supply DevOps Insight Server hostname or IP and Elasticsearch port.

DevOps Insight Server Hostname or IP address—The DevOps Insight server host name or IP address that DevOps Foresight will access.

Elasticsearch port—Port number to be used to store information in Elasticsearch.

DevOps Insight Server allows unsecured access—Uncheck this field if you want to use a secure protocol and authentication when accessing the DevOps Insight server. If you do so, the **User name** and **Password** fields appear to let you enter DevOps Insight Server credentials:

Important: Unsecured access is not recommended for use in a production environment.

User name—The user name for your DevOps Insight Server.

Password—The password for your DevOps Insight Server.

- Complete the information on the **Configure Service** screen, and click **Next** to continue. The installer attempts to access the DevOps Insight Server with the credentials just provided.

If successful, the **Remote ElectricFlow Server** screen appears. Otherwise, correct user name and password and click **Next**, again, to continue.

The ElectricFlow Server configures access to the DevOps Foresight server. Supply your ElectricFlow Server host name.

Server host name—ElectricFlow Server host name.

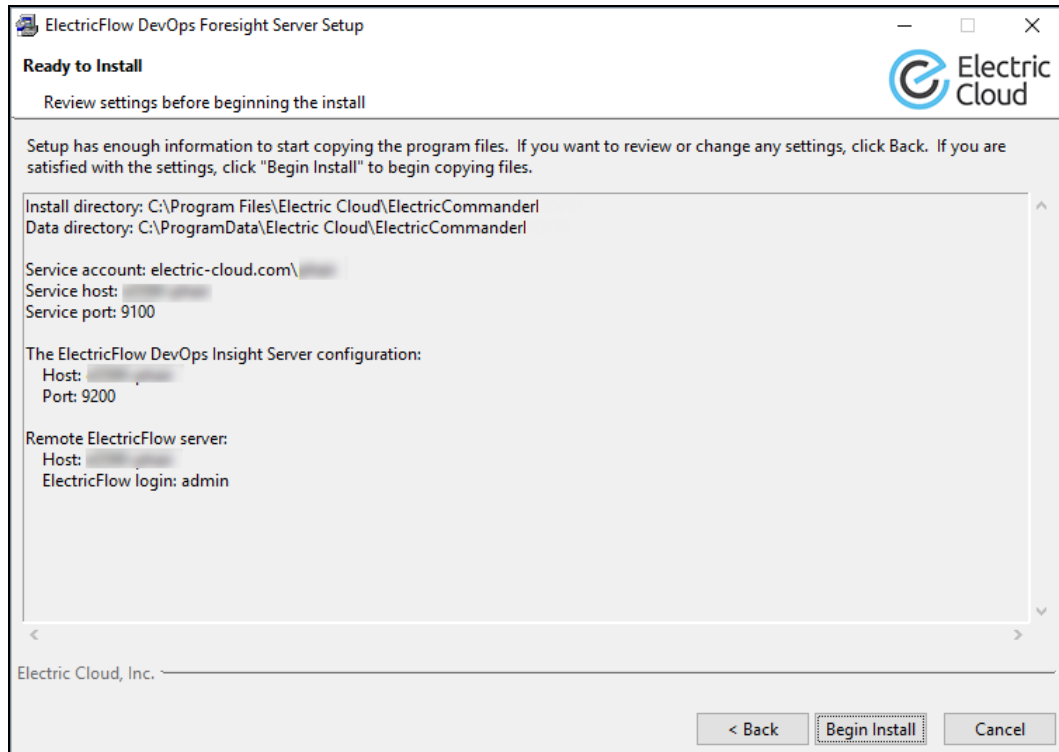
ElectricFlow user name—The user name for your ElectricFlow Server.

Password—The password for your ElectricFlow Server.

DevOps Foresight License—Enter, or browse to, the file name containing your DevOps Foresight license.

- Complete the information on the **Remote ElectricFlow Server** screen, and click **Next** to continue.

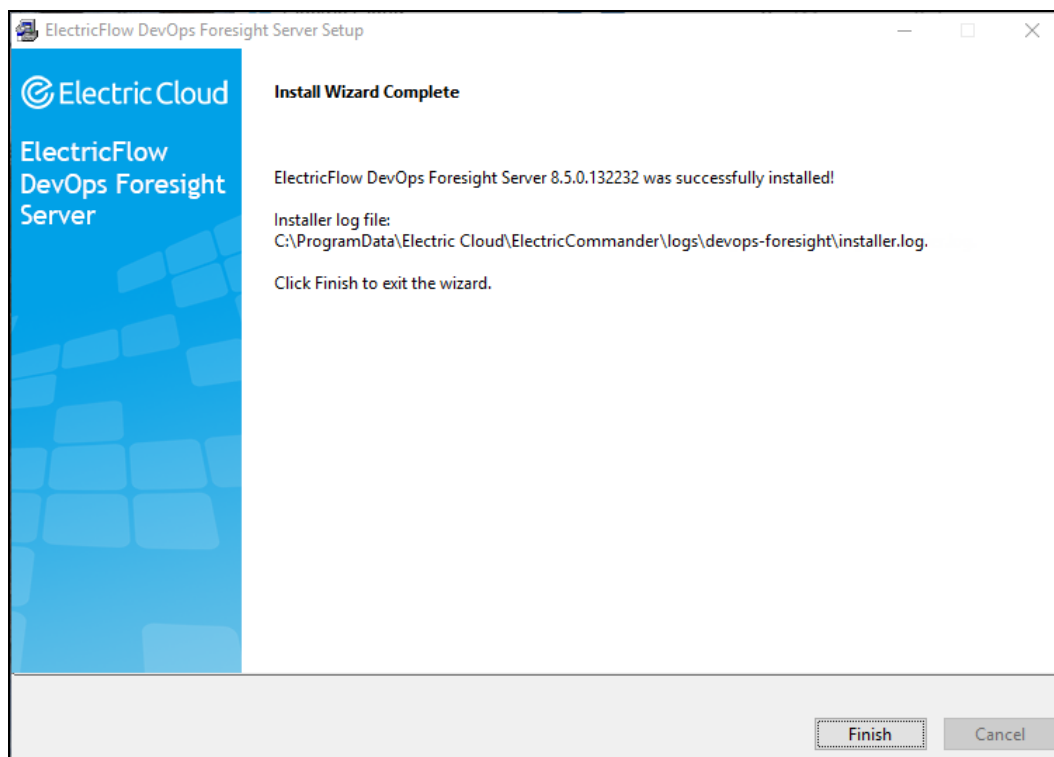
The **Ready to Install** appears:



8. Review this screen to verify your selections. Use the **Back** button to change any of your settings if needed.
9. Click **Begin Install**.

The installer displays a status bar to show the progress of the installation process, which can take a few minutes. When the installation process is complete, the **Install Wizard Complete**

screen appears:



10. **Click Finish** to close the wizard.

Interactive Command-Line Installation

The command-line user interface installation method is supported only by Linux platforms. In this mode, additional command line parameters that are listed in [Silent Unattended Installation on page 19](#) can be used.

1. Choose one of the following commands to start the full installer.
 - From a command line, enter


```
sudo ./ElectricFlowDevOpsForesightServer-x64-<version>
```
 - On Linux platforms with the X Window System, the installer invokes the graphical user interface. To override this behavior, enter


```
sudo ./ElectricFlowDevOpsForesightServer-x64-<version> --mode console.
```

The following message appears:

```
Logging to "/tmp/ijtmp_00CB8424-9E21-C4E5-3357-0E5B11BADFA6/installer-
EFlowReportServ.log"
```

```
Copyright (c) 2006-2018, Electric Cloud, Inc. All rights reserved.
```

```
This will install ElectricFlow DevOps Foresight Server on your computer.  
Continue? [n/Y]
```

2. Continue the installation by entering `y`.

The following message appears:

```
Specify the install directory (for binaries)  
[/opt/electriccloud/electriccommander]
```

3. Press `Enter` to accept the default installation directory, or enter a new installation directory path for program files and binaries.

The following message appears:

```
Specify the data directory (for data files, configurations and logs)  
[/opt/electriccloud/electriccommander]
```

4. Press `Enter` to accept the default installation directory, or enter a new installation directory path for data files, configurations, and logs.

The following message appears:

```
Specify the user the services will run as [<primary user>]
```

5. Enter the name of the user who owns the ElectricFlow DevOps Foresight server processes.

The following message appears:

```
Specify the group the services will run as [<primary group>]
```

6. Enter the name of the group who owns the ElectricFlow DevOps Foresight server processes, or accept the default primary group of the chosen user by pressing `Enter`.

The following message appears:

```
Specify the host name or IP address on which the installed service will be  
available [ip-10-0-0-162.us-west-1.compute.internal]
```

The host name or IP address of the system on which the DevOps Foresight server is being installed.

7. If you want to specify a non-default host name, enter it, or accept the default host name by pressing `Enter`.

The following message appears:

```
Choose the port which will be used by server [9100]
```

This port is used by the DevOps Foresight server.

8. If you want specify a non-default port number, enter that number, or accept the default port number by pressing `Enter`.

The following message appears:

```
Specify the host of the remote ElectricFlow DevOps Insight server []
```

9. Enter the host name of DevOps Insight server and press `Enter`. You must specify a host.

The following message appears:

```
Specify the port of the remote ElectricFlow DevOps Insight server [9200]
```

10. Enter the port number for your DevOps Insight Server, or accept default and press `Enter`.

The following message appears:

```
Does the ElectricFlow DevOps Insight server on "e5590-phair" use
authentication? [n/Y]
```

11. In most cases, it does use authentication. Continue the installation by entering `y`.

The following message appears:

```
Specify the user name with which to login to "e5590-phair" [reportuser]
```

12. Enter the user name you configured during the DevOps Insight Server install, or accept the default by pressing `Enter`.

The following message appears:

```
Specify the password for "reportuser" on "e5590-phair" [changeme]
```

13. Enter the password you configured during the DevOps Insight Server install, or accept the default by pressing `Enter`.

The following message appears:

```
Specify the host[:port] of the remote ElectricFlow server []
```

14. Enter the name of the ElectricFlow server that will communicate with this DevOps Foresight server. If the remote server is using a non-default HTTPS port, you must specify the host name as `<host>:<port>`. If you do not specify a port, HTTPS port 8443 is assumed (the same as the ElectricFlow server default port).

The following message appears:

```
Specify the user name with which to login to "<remote host>" [admin]
```

15. Enter the name of an ElectricFlow user on the ElectricFlow server who has sufficient privileges to edit server settings. This field defaults to the ElectricFlow-supplied `admin` user.

The following message appears:

```
Specify the password for "<remote user>" on "<remote host>" []
```

16. Enter the password for the ElectricFlow user. The default password for the `admin` user is `changeme`.

The following message appears:

```
The ElectricFlow DevOps Foresight Server will be configured on ElectricFlow
server version <version> on <remote host>
```

The ElectricFlow software is installed on the machine. When the installation completes successfully, a message that contains the line `Installation complete` appears.

Silent Unattended Installation

You can run the ElectricFlow DevOps Foresight server installer in unattended (silent) mode with no user interface on either Windows or Linux.

Installing the DevOps Foresight Server

Enter one of the following commands from a command line.

- **Linux:** `sudo ./ElectricFlowDevOpsForesightServer-x64-<version> --mode silent <arguments>`
- **Windows:** `ElectricFlowDevOpsForesightServer-x64-<version>.exe --mode silent <arguments>`

where:

- `<version>` is your ElectricFlow DevOps Foresight server version number.
- `<arguments>` represents any additional silent install arguments.

For a successful installation in this mode, you must specify the following:

- **Linux:** Use the `--unixServerUser` and `--unixServerGroup` options to specify the user name and group that the ElectricFlow DevOps Foresight server service runs as.
- **Windows:** Use the `--windowsServerUser`, `--windowsServerPassword`, and `--WindowsServerDomain` options to specify the user name, password, and domain (if the account is not local) of the account the ElectricFlow DevOps Foresight server service runs as or the `--windowsServerLocalSystem` option to use the local system account.

Arguments

The following table lists installation arguments. You can view the full installer help by entering `ElectricFlowDevOpsForesightServer-x64-<version> --help`.

<code>--dataDirectory <argument></code>	<p>Directory used to store binaries:</p> <ul style="list-style-type: none"> • Default value on Linux: <code>/opt/electriccloud/electriccommander</code> • Default value on Windows: <code>%ProgramFiles%\Electric Cloud\ElectricCommander</code> (usually: <code>C:\Program Files\Electric Cloud\ElectricCommander</code>)
<code>--devopsInsightServer <argument></code>	Host name of the remote DevOps Insight Server server.
<code>--devopsInsightServerPassword <argument></code>	Password of the remote DevOps Insight Server server.
<code>--devopsInsightServerPort <argument></code>	Port of the remote DevOps Insight Server server.

<code>--devopsInsightServerUser <argument></code>	User name to use when logging in to the remote ElectricFlow server.
<code>--help</code>	Display the information in this table
<code>--hostName <argument></code>	Host name or IP address to be used by the remote ElectricFlow server to communicate with the DevOps Foresight server. The default value is the current host name of the machine.
<code>--installDirectory <argument></code>	Directory used to store binaries. Default value on Linux: /opt/electriccloud/electriccommander Default value on Windows: %ProgramFiles%\Electric Cloud\ElectricCommander (usually: C:\Program Files\Electric Cloud\ElectricCommander)
<code>--licenseFile <argument></code>	The file name of the license file.
<code>--mode <arguments></code>	Set the installer mode: <ul style="list-style-type: none"> • Available values on Linux: console, silent or standard. • Available values on Windows: silent or standard.
<code>--remoteServer <argument></code>	<code><host>[:<port>]</code> of the remote ElectricFlow server
<code>--remoteServerPassword <argument></code>	Password to use when logging in to the remote ElectricFlow server.
<code>--remoteServerUser <argument></code>	User name to use when logging in to the remote ElectricFlow server.
<code>--temp <argument></code>	Set the temporary directory used by this program
<code>--unixServerGroup <argument></code>	(Linux only) Group name that the ElectricFlow DevOps Foresight server services run as <div style="background-color: #e0f2f1; padding: 5px; margin-top: 10px;"> <p>Note: This is required for silent installation on Linux.</p> </div>

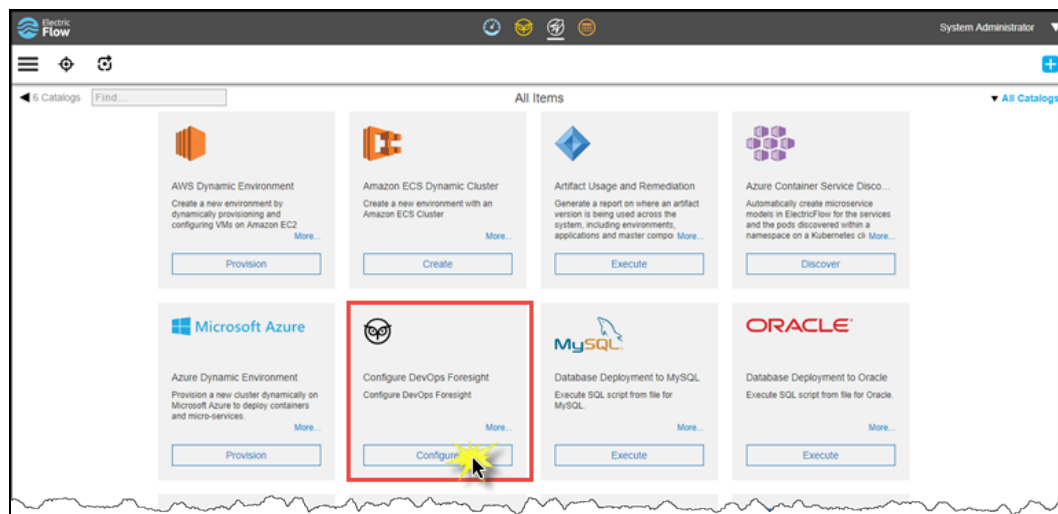
<pre>--unixServerUser <argument></pre>	<p>(Linux only) User name that the ElectricFlow DevOps Foresight server services run as</p> <p>Note: This is required for silent installation on Linux.</p>
<pre>--version</pre>	<p>Display installer version information</p>
<pre>--windowsServerDomain <argument></pre>	<p>(Windows only) Domain of the account the ElectricFlow DevOps Foresight server services will run as on Windows</p> <p>Note: Do not use this parameter if a local account used.</p>
<pre>--windowsServerLocalSystem</pre>	<p>(Windows only) Run the ElectricFlow DevOps Foresight server services as the local system account</p>
<pre>--windowsServerPassword <argument></pre>	<p>(Windows only) Password of the account that the ElectricFlow DevOps Foresight server services will run as</p> <p>Note: This is required for silent installation on Windows if the --windowsServerLocalSystem option is not specified.</p>
<pre>--windowsServerUser <argument></pre>	<p>User name of the account the ElectricFlow DevOps Foresight server services will run as on Windows</p> <p>Note: This is required for silent installation on Windows if the --windowsServerLocalSystem option is not specified.</p>

Chapter 4: Configuration

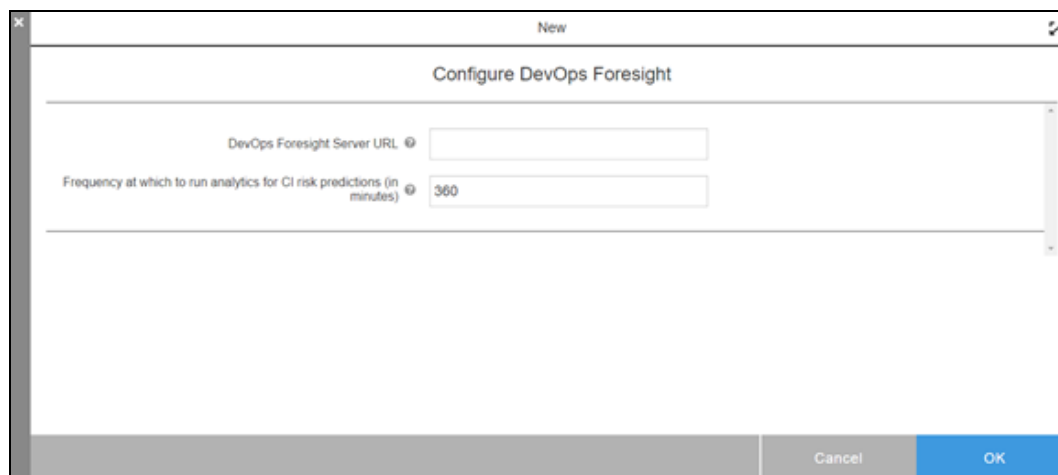
Configure DevOps Foresight in ElectricFlow



1. Sign in to ElectricFlow and go to **Self-Service Catalogs** by selecting the icon on the top of the screen.
2. Navigate to the **Configure DevOps Foresight** item and click **Configure**.



3. Enter the DevOps Foresight Server URL . This is the URL for accessing the DevOps Foresight server; for example, `http://<foresight_server_hostname>:8080`.



4. Enter the **Frequency at which to run analytics for CI risk predictions (in minutes)**.
5. Click **OK** to configure DevOps Foresight.

DevOps Foresight basic configuration is complete.

Configure Data Collection

ElectricFlow includes several plugins in the that you can configure to periodically collect Continuous Integration (CI) data from third-party tools and send it to the DevOps Insight server. DevOps Foresight uses this data for predictive analytics. The following table shows the CI-related data sets and corresponding plugins that can be used to collect data.

Data set	Third-party Tool	ElectricFlow Plugin
Build, and Change sets	Jenkins	EC-Jenkins
Code Commits	Git	ECSCM-Git
Code Quality (static code analysis)	SonarQube	EC-SonarQube

As part of DevOps Foresight, a utility procedure is added in the Electric Cloud project, out of the box, to aide in plugin setup. These procedures are available from ElectricFlow via the **Platform/projects** page in the Automation Platform web UI: browse to https://<ElectricFlow_server>/commander/, and then click **Administration > Platform/projects**. For more information about them see the *ElectricFlow User Guide*.

Utility Procedure in Electric Cloud Project	Plugin	Description
Jenkins Setup for Command Center - build and quality	EC-Jenkins	This is an existing procedure that is also used to setup EC-Jenkins for the Release Command Center. If the procedure was already used to set up Release Command Center, then the schedule that was created for the same may be updated as required for DevOps Foresight.
Git Setup for DevOps Insight	ECSCM-Git	This is a new procedure added as part of DevOps Foresight.
SonarQube Setup for DevOps Foresight	EC-SonarQube	This is a new procedure added as part of DevOps Foresight.

Once the CI risk predictions analytics start running on the scheduled frequency, you can start seeing **Risk Predictions**, and more through DevOps Foresight.

