

NEW YORK
YIMBY

RAMSA's 200 East 83rd Street Wrapping Up Construction On Manhattan's Upper East Side



200 East 83rd Street. Rendering by DBOX.

BY: [MICHAEL YOUNG AND MATT PRUZNICK](#) 8:00 AM ON DECEMBER 4, 2022

At number 28 on our annual construction countdown of the tallest projects underway in the city is [200 East 83rd Street](#), a 35-story residential tower nearing completion in the [Yorkville](#) section of Manhattan's [Upper East Side](#). Designed by [Robert A.M. Stern Architects](#) and developed by [Naftali Group](#) and [Rockefeller Group](#), the 489-foot-tall structure will yield 205,877 square feet and 86 condominium units with sales and marketing led by Compass, as well as 3,033 square feet of ground-floor retail space and parking for 26 vehicles. [SLCE Architects](#) is the architect of record and Leeding Builders Group is the general contractor for the property, which is located at the corner of Third Avenue and East 83rd Street.

Additional windows and limestone façade panels have been installed since [our last update](#) in July, including on the eastern elevation, where the construction elevator is being dismantled. Only a few finishing touches remain, such as the installation of windows near the top of the tower and at its midpoint. Sidewalk scaffolding still surrounds the property, but should be removed in the coming weeks as exterior work wraps up.



200 East 83rd Street. Photo by Michael Young



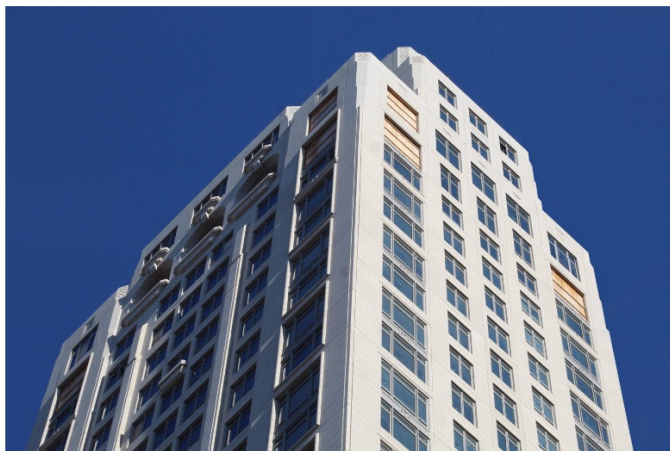
200 East 83rd Street. Photo by Michael Young



200 East 83rd Street. Photo by Michael Young



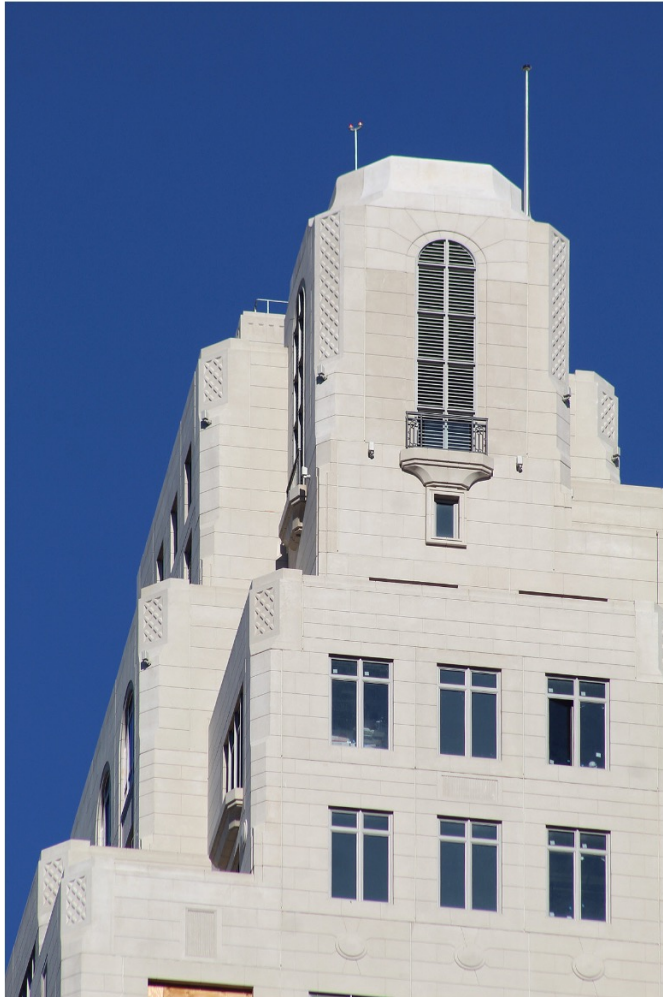
200 East 83rd Street. Photo by Michael Young



200 East 83rd Street. Photo by Michael Young



200 East 83rd Street. Photo by Michael Young



200 East 83rd Street. Photo by Michael Young



200 East 83rd Street. Photo by Michael Young



200 East 83rd Street. Photo by Michael Young



200 East 83rd Street. Photo by Michael Young



200 East 83rd Street. Photo by Michael Young



200 East 83rd Street. Photo by Michael Young



200 East 83rd Street. Photo by Michael Young

Homes will come in one- to six-bedroom layouts and with pricing from \$2.05 million to \$32 million. Two-bedrooms begin at \$3.175 million, three-bedrooms at \$4.35 million, and four-bedrooms at \$5.35 million. There are also three penthouses available in five- or six-bedroom layouts with prices from \$23 million to \$32 million. Each comes with private outdoor space.

The condominium units start on the seventh floor with a maximum of four homes per level. Apartments on the lower floors have an average span of 2,000 square feet. Two full-floor penthouses are located on the 32nd and 33rd stories, followed by a duplex penthouse above.

Residential amenities include a gated motor courtyard, a private courtyard and winter garden, a media room, and multiple children's playrooms for different age groups, and a spa with a steam room, sauna, and treatment rooms. The 17th level will house the wellness amenities, along with a landscaped terrace and yoga room.

200 East 83rd Street is slated for completion next winter.

<https://newyorkyimby.com/2022/12/ramsas-200-east-83rd-street-wrapping-up-construction-on-manhattans-upper-east-side.html>