

Ripple Effects Mapping

Capturing Impacts of Complex Work

Debra Hansen, M.Ed.



WSU EXTENSION
Stevens County





**Your impact may
not be evident for a long time.**



**Participatory
evaluation**



**Intended and
unintended results**

Do you *ever* feel like this after conducting an evaluation?



Participant Benefits

Emerging patterns
& trends

Fun,
engaging,
visual

Positive &
hopeful
when seeing
results

Connect
to larger
purpose

Reflection & growth

Evaluator Benefits

When its difficult to conceptualize and measure with other methods

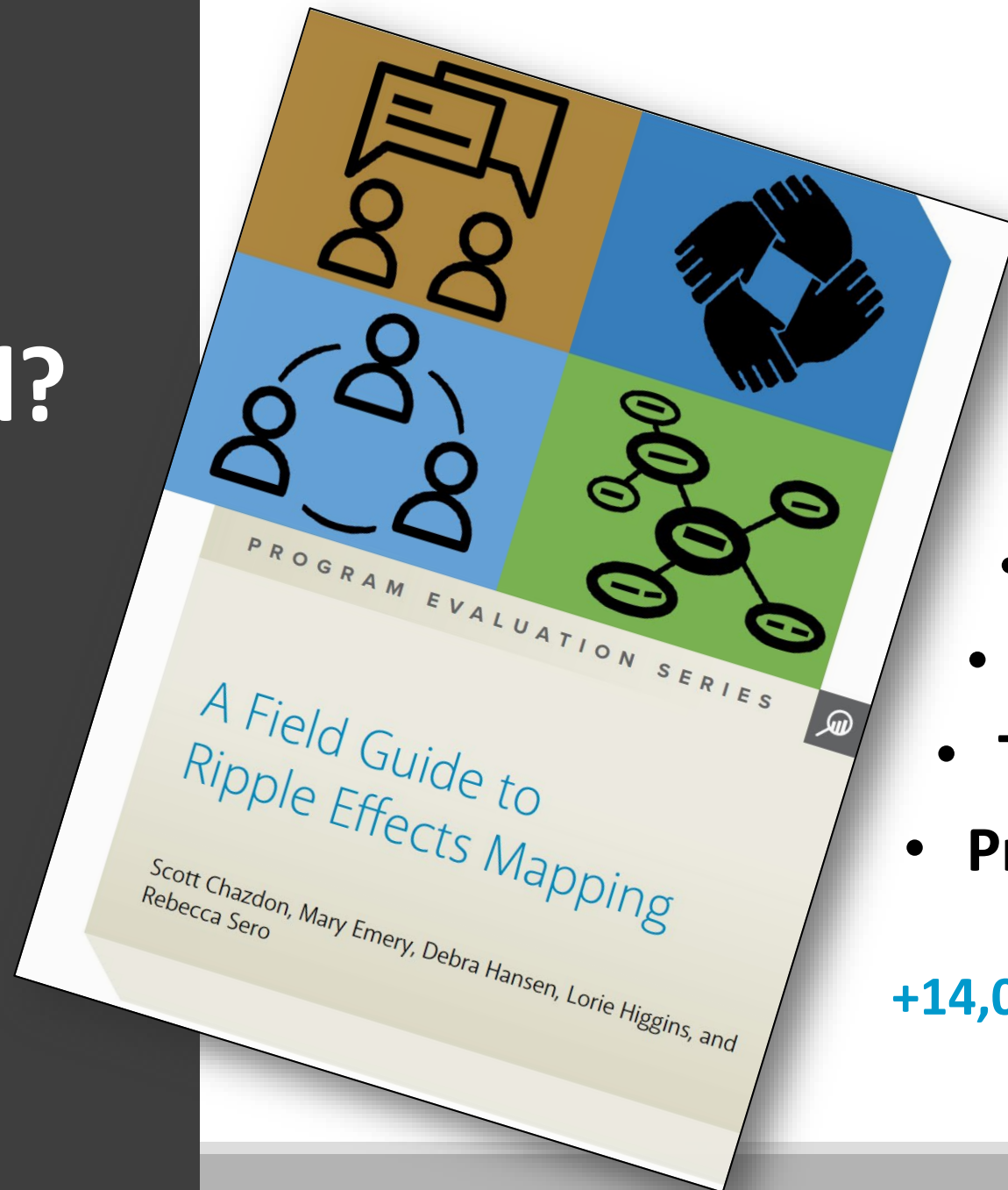
Collects stories & impacts

Mid-program or Post-program

Captures chain of events from complex or evolving work

Group validation of results

Where
has it
worked?



- 4-H Youth
- Food Systems
- Master Gardeners
- Farm Management
- Business Development
- Tribal Programming
- Prevention Coalitions

+14,000 downloads in 44 countries!

How does it work?

Interviews

Mapping

Digitizing

Coding



Member discussions - Listening and leveraging.

people here. - When they are here, how do we help them

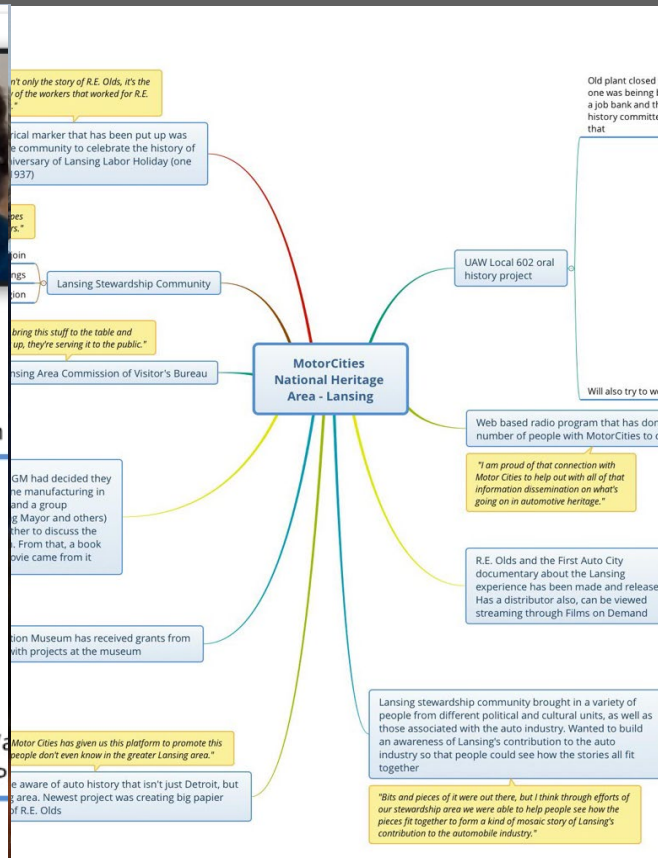
per knows what's going on.

n community

ng a younger people

Welcome W
Relocation P

Newer
people
(outreach)



1. Beth 2015-2016 (Program Director Northwest Harvest / first year VISTA)

1.1. Had been working in agriculture and s

1.1.1. Very few entry level positions tha

1.1.1.1. Thinking about how to develo larger group that is looking to bring ch of your labor.

1.1.1.1.1. Gave her the chance to th she's interested in. Management po VISTA Director and current position

1.1.1.2. Had the opportunity to build r (talked with a farmer across the state

Core Component 1

Appreciative Inquiry

“People move in the direction of the stories they tell about themselves.”



Core Component 2

Participant Driven



Core Component 3

Interviews & Reflection



Core Component 1

Radiant Thinking



Reports



O K A N O G A N
COUNTY COMMUNITY
COALITION

**Analytic Report on Ripple Effects Mapping for
Okanogan County Community Coalition, March
15, 2022**

Submitted by:

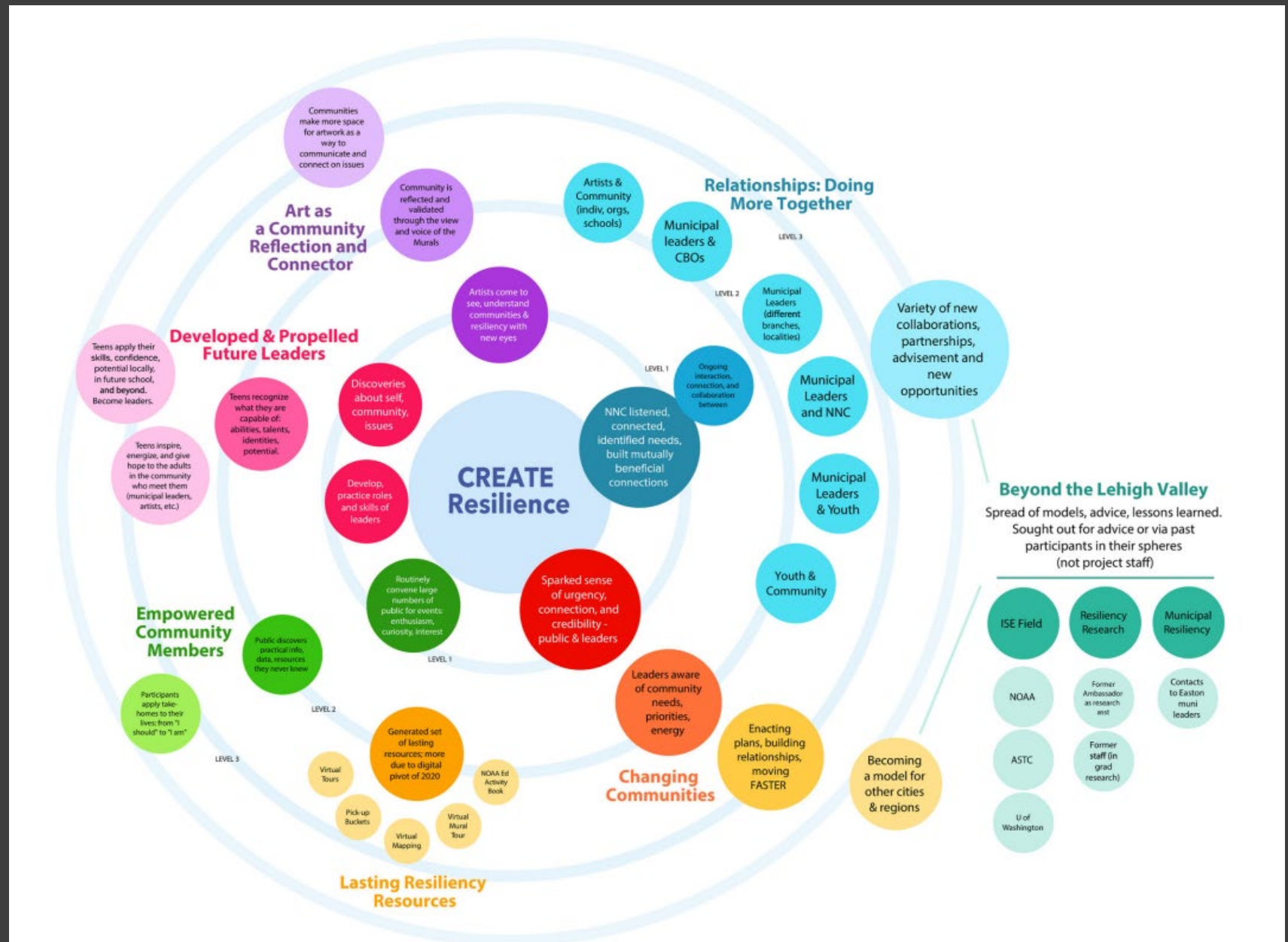
Scott Waller, M.Ed., CPP, and Rachel Montgomery, CPP

May 13, 2022

**Prevention
Community
Coalitions:**

**Scott
Waller**

Graphics



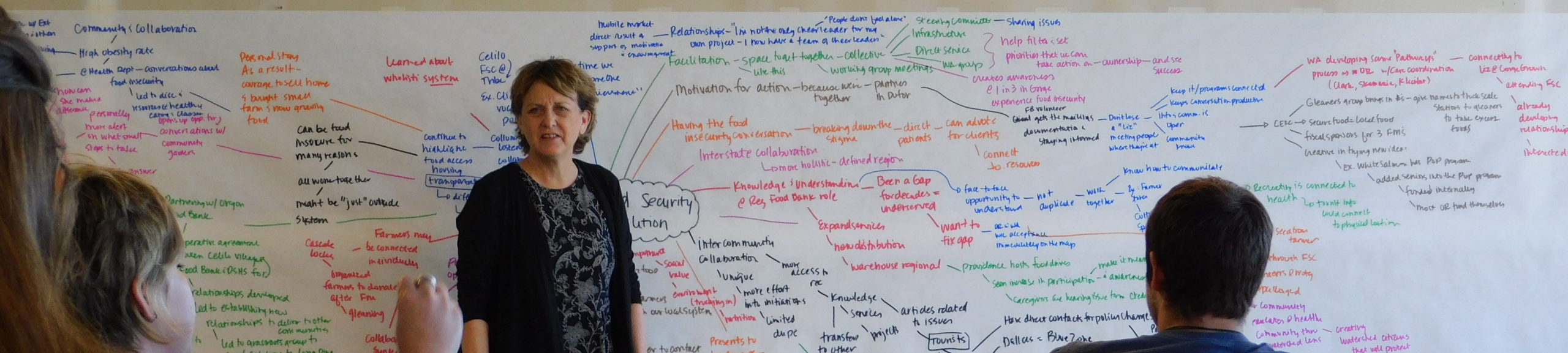
Semmens, K. A., Carr, R. H., Maxfield, K., & Sickler, J. (2023). CREATE resilience through science, art, and community engagement.

Presetations



Celebrations – WE did this!





Debra Hansen, M.Ed.
 Washington State University Extension
 Professor and County Director
debra.hansen@wsu.edu



WSU EXTENSION
Stevens County