

Research Program

Sarah Okey, Program Manager

Tyler Watson, Research Specialist

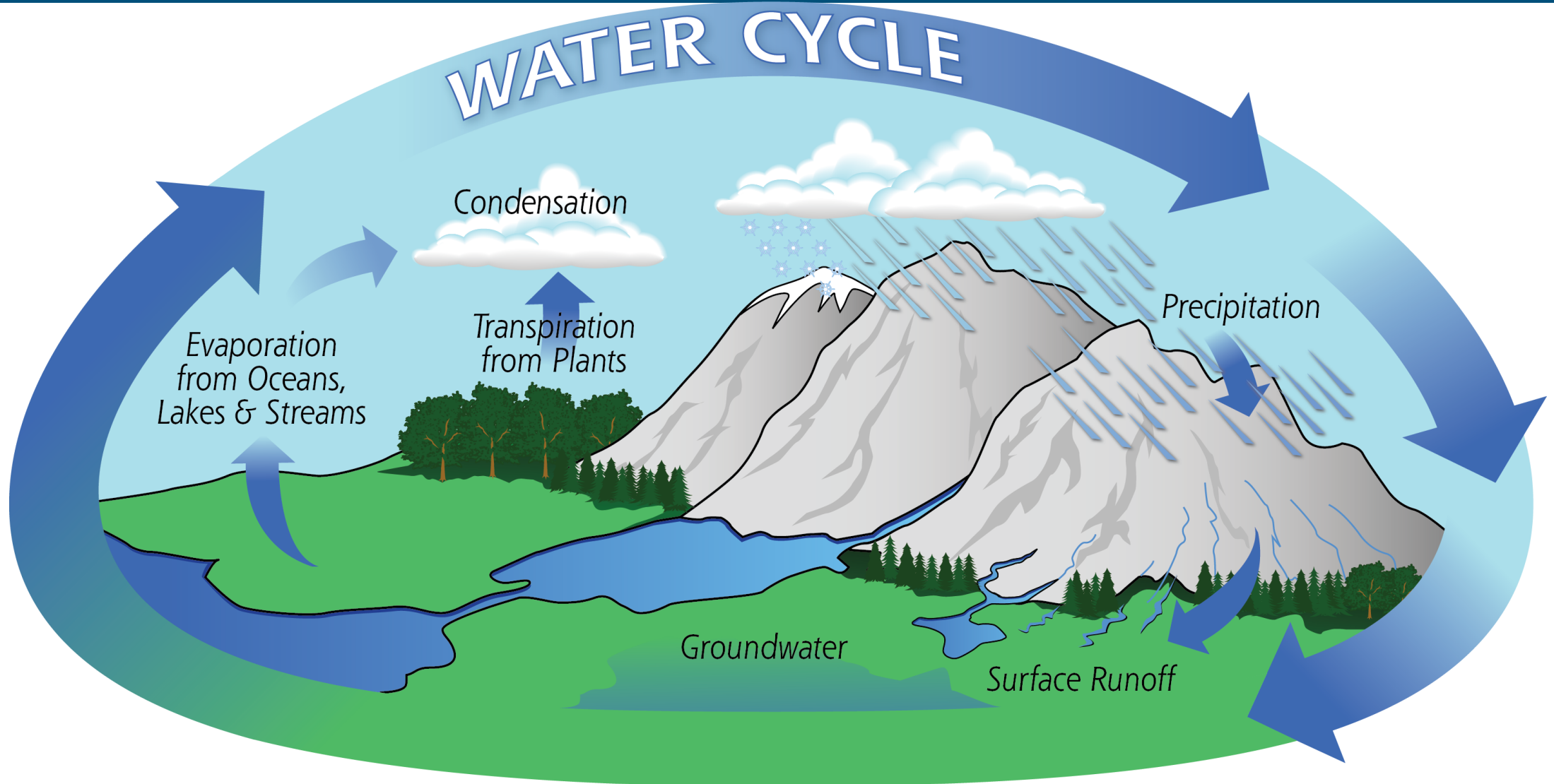
Nick Glodosky, Research Analyst



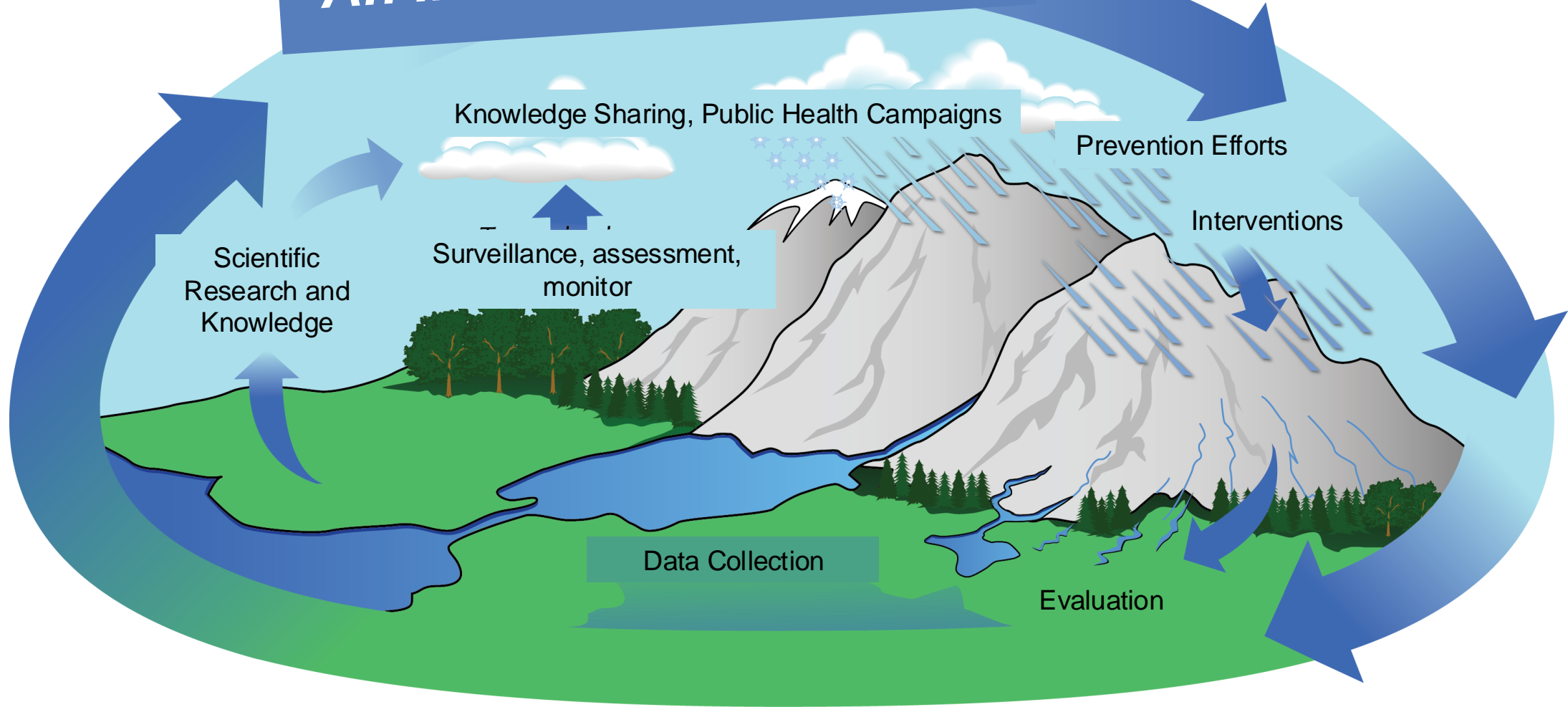
Washington State Liquor and Cannabis Board

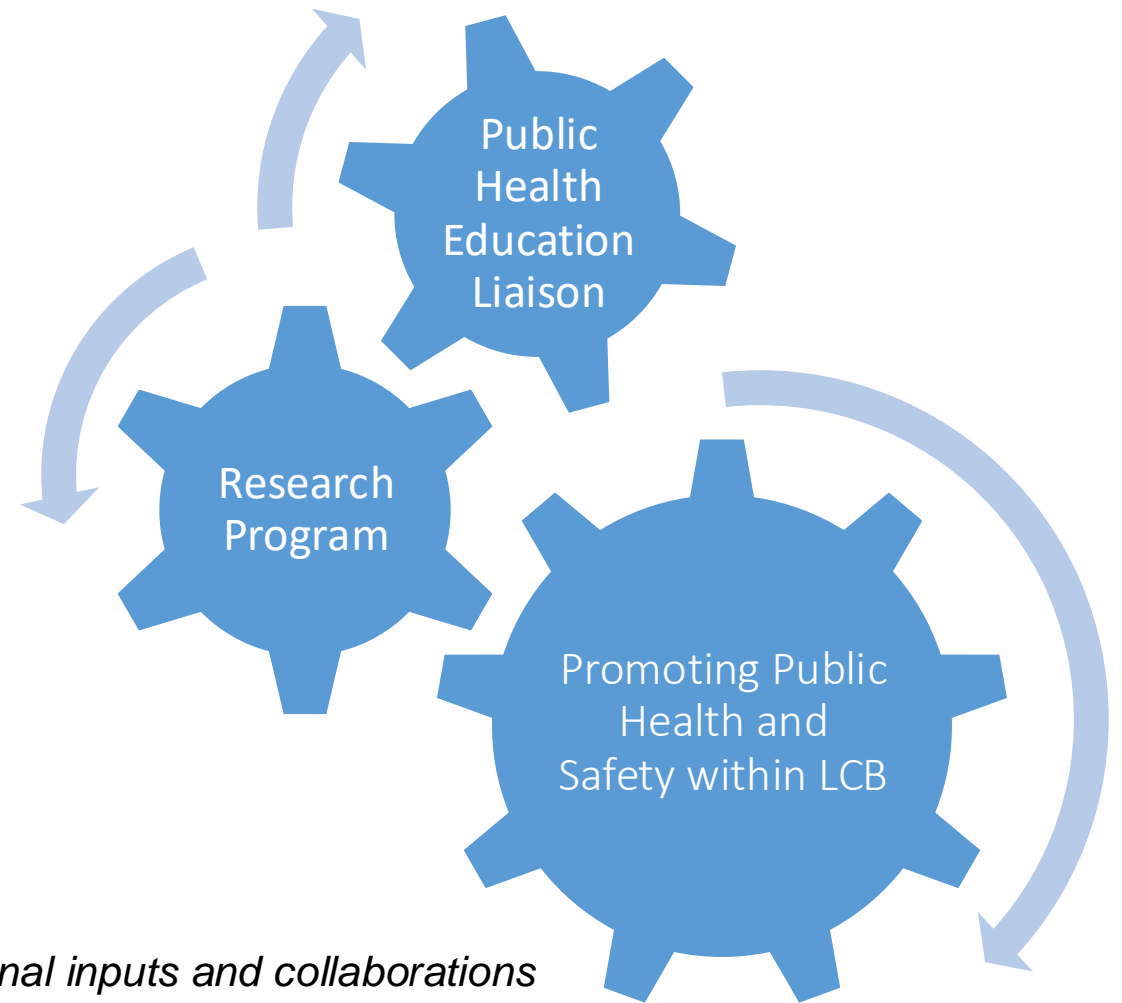
Agenda

- How the Research Program and Public Health Education Liaison Collaborates within LCB
- Current Research Briefs
- ICPS Dashboard



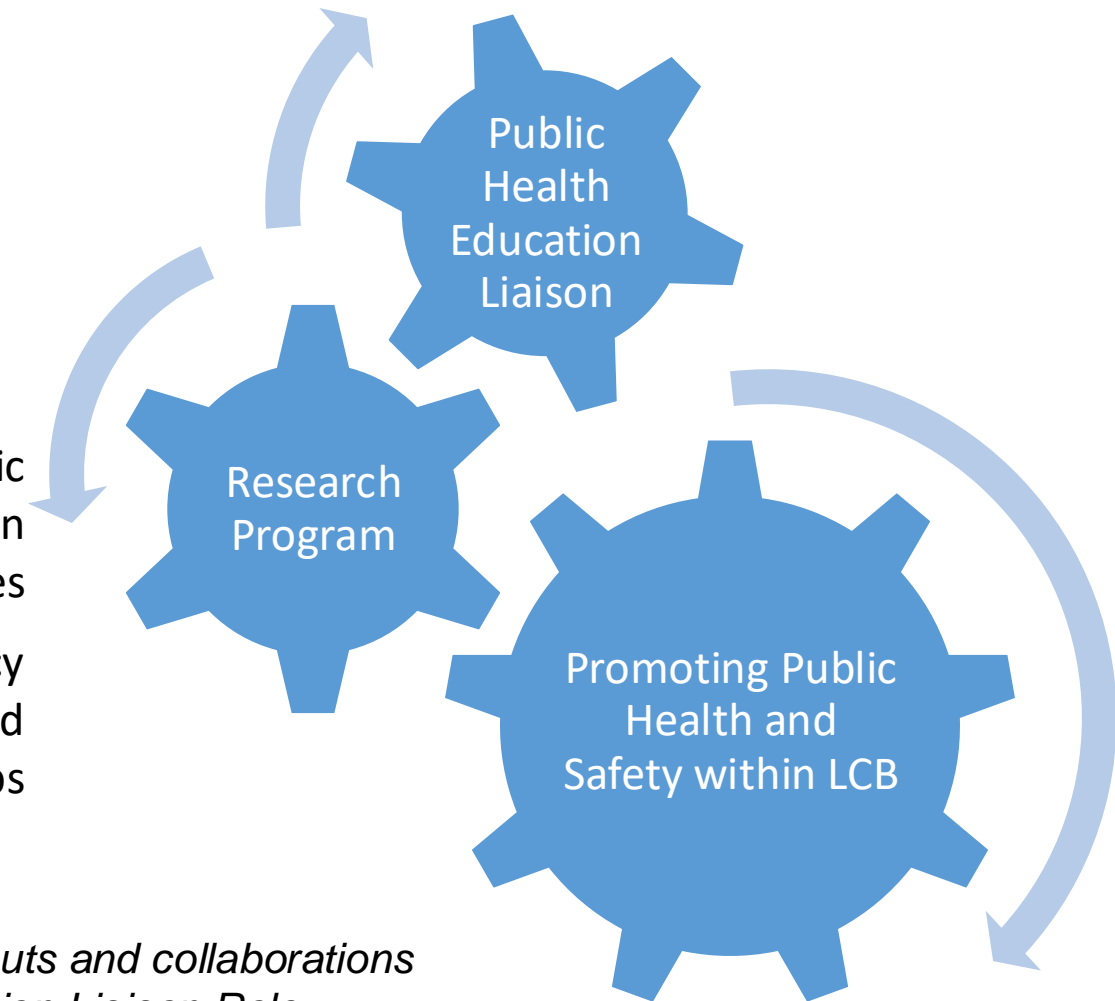
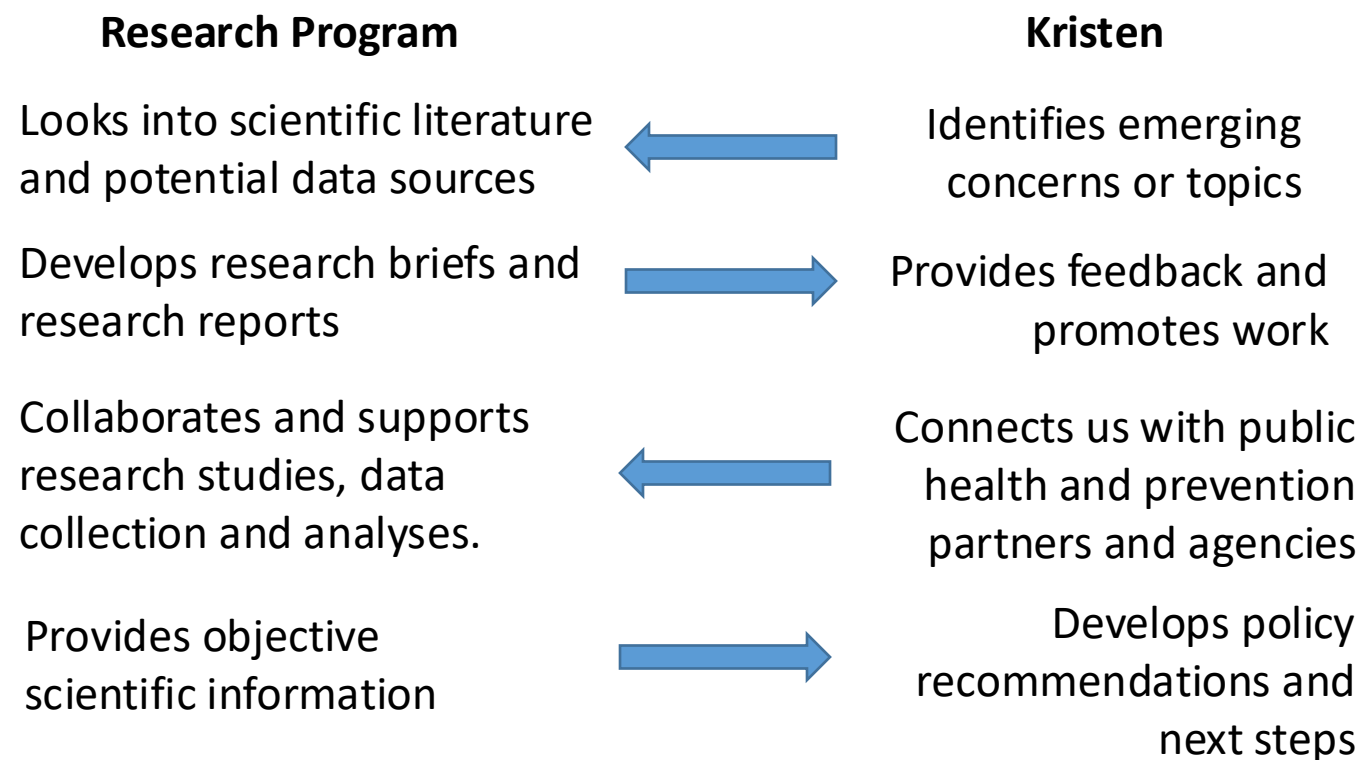
An Interconnected Cycle





**Please note this is a simplified version as there are many additional inputs and collaborations above and beyond the Research Program and the Public Health Education Liaison Role*

Collaboration Within LCB



**Please note this is a simplified version as there are many additional inputs and collaborations above and beyond the Research Program and the Public Health Education Liaison Role*

Current Research Briefs

Short, non-technical summaries of scientific literature, government reports, and other credible sources of relevant and emerging topics of discussion.

Topics are prioritized based on several criteria, including relevance and value to internal and external partners, alignment with agency policy and strategy, and availability of staff resources.

Current Research Briefs

We currently have **6** published briefs:

1. Alcohol and Sporting Events
2. Alcohol Outlet Density
3. Alcohol Product Placement
4. Alcohol Use, Sexual Violence, and Nightlife
5. Cannabis Flavored Vape Products
6. Cannabis Packaging/Labeling and Youth Appeal

Research Program



The Research Program at the Washington State Liquor and Cannabis Board is a non-partisan and transparent resource focused on public safety and public health outcomes related to the products, policy, and regulation of alcohol, cannabis, tobacco, and vapor.

Our Mission

Enhance public health and public safety by conducting, analyzing, and reporting internal and external research that is evidence-based and non-partisan.

Our Vision

A leading research center focused on the products and services regulated by LCB, with an emphasis on communicating science for public benefit.

What We Do

- **Conduct comprehensive literature reviews** to drive informed, effective, and evidence-based decision making.
- **Develop innovative research studies** to track policy outcomes and advance the scientific understanding of relevant concepts.
- **Provide science-backed information** (e.g., presentations and peer-reviewed publications) to a wide audience including regulators, researchers, and community members.

[Visit lcb.wa.gov/research/research_program](https://lcb.wa.gov/research/research_program)

Current Research Briefs

We currently have **6** published briefs:

1. Alcohol and Sporting Events
2. Alcohol Outlet Density
- 3. Alcohol Product Placement**
- 4. Alcohol Use, Sexual Violence, and Nightlife**
5. Cannabis Flavored Vape Products
- 6. Cannabis Packaging/Labeling and Youth Appeal**

Research Program



The Research Program at the Washington State Liquor and Cannabis Board is a non-partisan and transparent resource focused on public safety and public health outcomes related to the products, policy, and regulation of alcohol, cannabis, tobacco, and vapor.

Our Mission

Enhance public health and public safety by conducting, analyzing, and reporting internal and external research that is evidence-based and non-partisan.

Our Vision

A leading research center focused on the products and services regulated by LCB, with an emphasis on communicating science for public benefit.

What We Do

- **Conduct comprehensive literature reviews** to drive informed, effective, and evidence-based decision making.
- **Develop innovative research studies** to track policy outcomes and advance the scientific understanding of relevant concepts.
- **Provide science-backed information** (e.g., presentations and peer-reviewed publications) to a wide audience including regulators, researchers, and community members.

[Visit lcb.wa.gov/research/research_program](https://lcb.wa.gov/research/research_program)

Alcohol Product Placement

Key Takeaway: At-risk populations (e.g., youth and those with substance use disorders) are frequently exposed to alcohol in retail stores.



(Some of) Kristen’s Involvement on Topic

Hosted listening session

Provided updates to agency

Provided feedback on brief

Collected photos from the field

Relayed community input to leadership

Alcohol Use, Nightlife, and Sexual Violence

Key Takeaway: There is an association between alcohol use, nightlife, and sexual violence. There are many other risk factors that also play a role in this sensitive topic.

(Some of) Kristen’s Involvement on Topic

Held internal discussions about impact of rule

Relay community input to leadership

Provided feedback on brief



Washington State
Liquor and Cannabis Board

CR 103 Memorandum

Re: Prohibited Conduct Rulemaking.

Date: June 18, 2024
Presented by: Daniel Jacobs, Rules Coordinator



Washington State Liquor and Cannabis Board

Cannabis Packaging and Labeling and Youth Appeal

Key Takeaway: There is general agreement that cannabis products should not appeal to youth, but a wide variety of regulations and practices across the U.S. that could be more consistent.



(Some of) Kristen's Involvement on Topic

Will host listening sessions

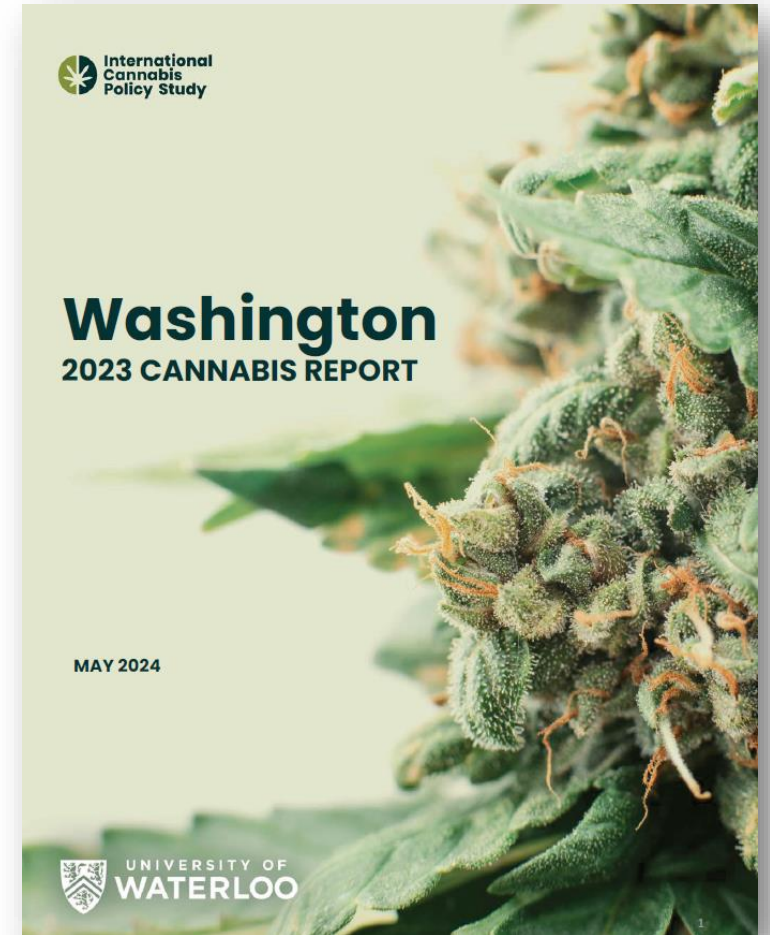
Involved in new review committee

Collaborated with researchers to advance topic areas

Developing recommendations

International Cannabis Policy Study

An annual, international survey designed to examine trends in cannabis policy and public health impacts.





International Cannabis Policy Study

Public Health Education Liaison

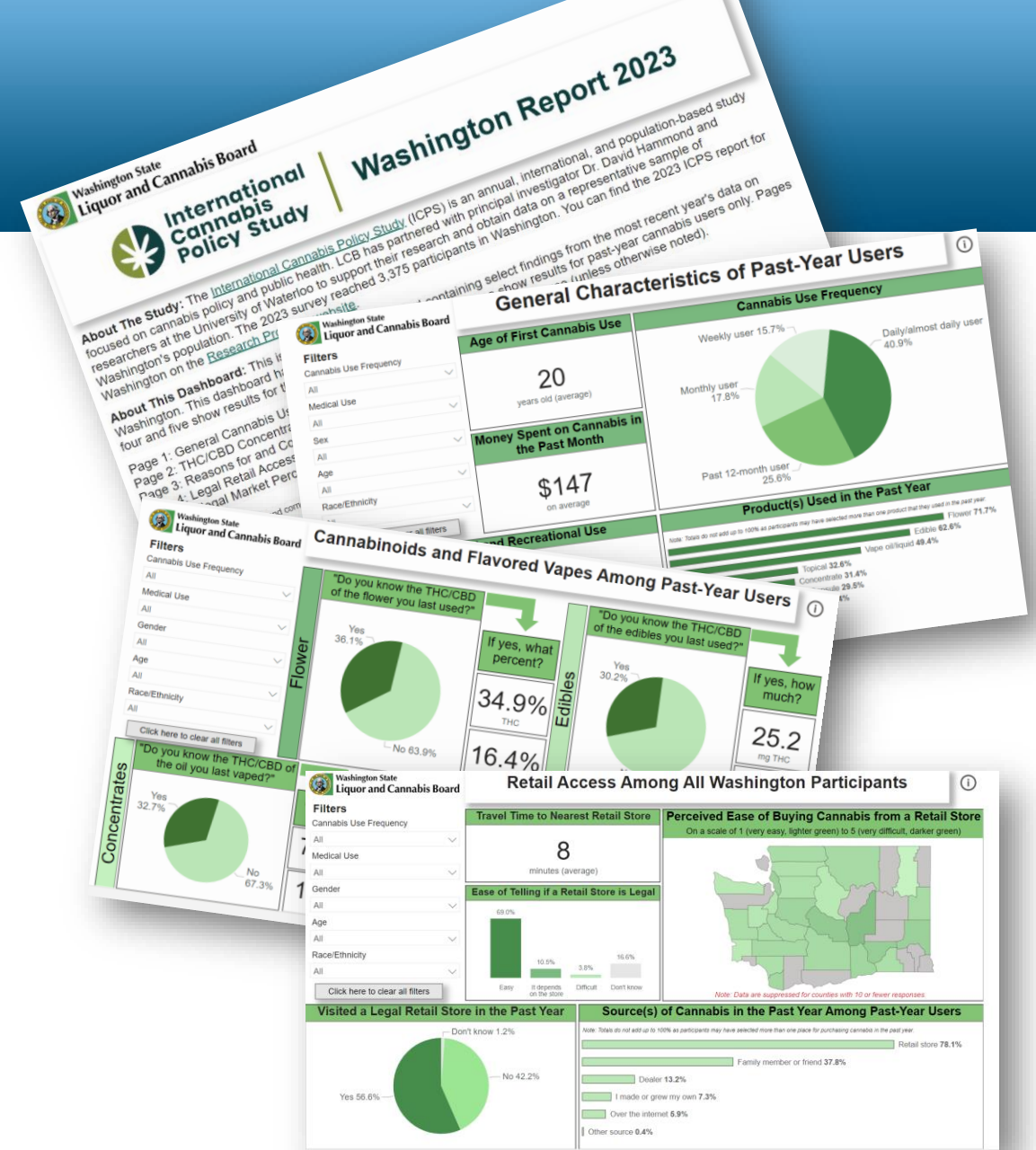
- This role has supported ICPS for several years at LCB
- Elevates findings to public health and prevention individuals as well as internal and external partners
- Advises on key data indicators for further analysis
- Provides input on current and future questions

Research Program

- This new program will now lead ICPS at LCB
- Manages dataset and conducts analyses
- Built data dashboard to increase visibility of data
- Responds to requests data requests
- Provides input on current and future questions



Within our agency's strategic mission, we have built the first dashboard using this data. When we finalize, it will be public facing on our website (come back soon)!



Thank you!

Email us at lcbresearch@lcb.wa.gov.