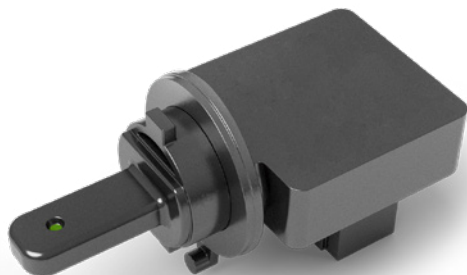


# Dew point sensor

## SADP series



### Features

- Rapid response time thanks to zero dead space design
- Watertight measurement tip (IP6K4K)
- USCAR-standard sealed connector and sealed housing
- Easy toolless mounting with bayonet
- LIN interface, always-on 12 V compliant

Accurate measurement of intake air humidity and temperature is essential to ensure energy efficiency and passenger comfort. Mounted inside the HVAC system, our sensor provides the HVAC controller with fast and accurate measurements to continuously determine the optimal evaporator setpoint. Cooling the air only as much as needed reduces energy-intensive reheating and avoids excessively dry air that can cause discomfort.

### Specifications

SADP series specifications	
Relative humidity	Range 0-100 %
Temperature	Range -40 to +85 °C Accuracy $\pm 0.5^{\circ}\text{C}$
Dew point temperature	Range -15 to +70°C dew point Accuracy $\pm 2^{\circ}\text{C}$ dew point (20-50°C air temp./30-100 %RH)
Electrical interface	LIN 2.2, 19.2 kBd
Supply current	Typ. 2 mA
Supply voltage	9-16 V
Dimensions	62 mm $\times$ 26 mm $\times$ 33 mm
Weight	15 g