



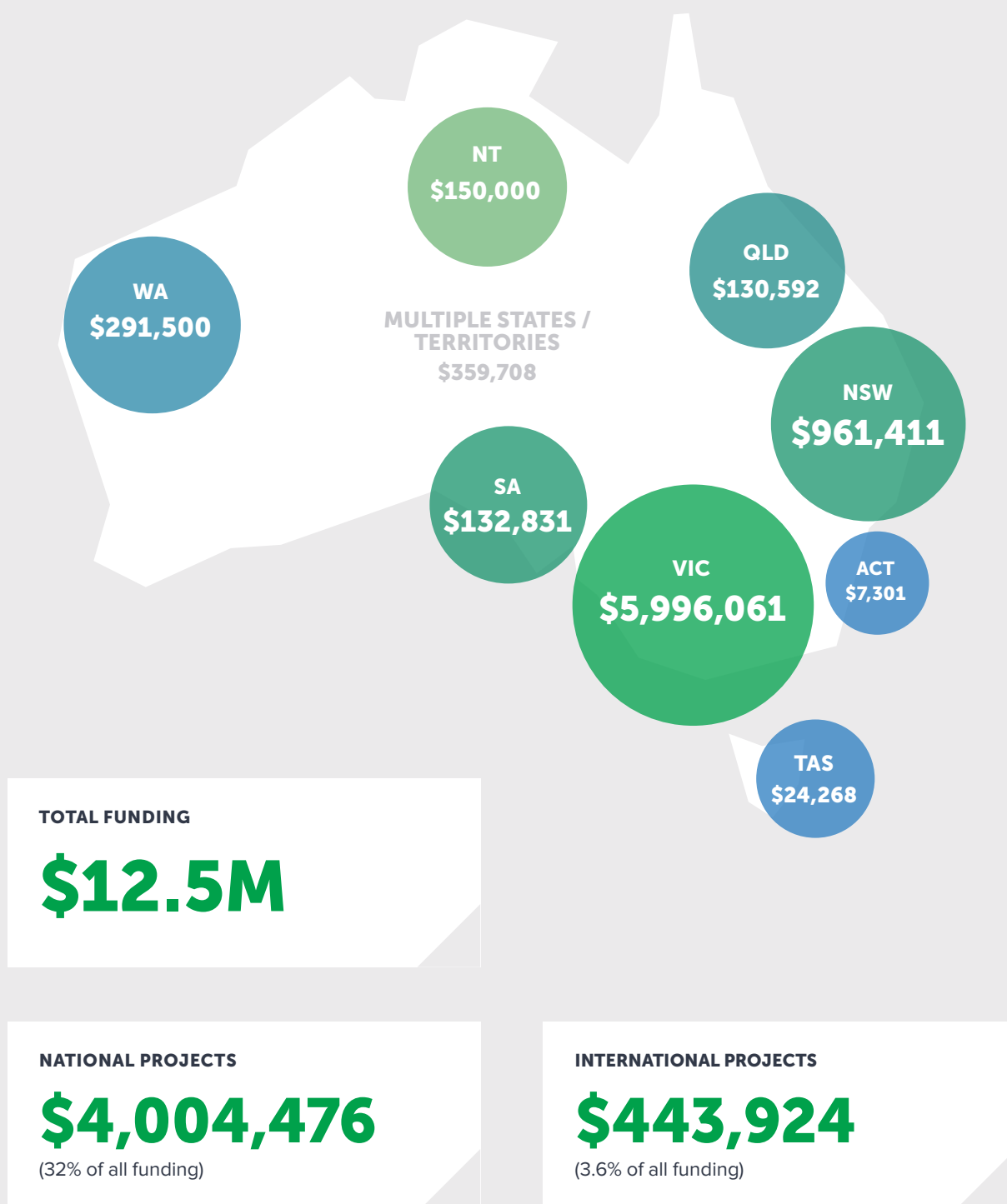
SHARED VISIONS. SHARED IMPACT.

**GRANTS & FUNDS
2019/20**

GRANTS OVERVIEW

IN 2019/20, OUR COMMUNITY OF 350 FUNDS & FOUNDATIONS DISTRIBUTED 909 GRANTS TO 527 ORGANISATIONS AND INDIVIDUALS. TOGETHER, WE GRANTED \$12,502,071 IN TOTAL: 11% OF OUR ENTIRE CORPUS. THAT'S 33% MORE OUT THE DOOR THAN LAST YEAR. OUR LARGEST GRANT WAS \$380,000 AND OUR AVERAGE GRANT WAS \$14,000.

SUPPORTING COMMUNITIES ACROSS AUSTRALIA 2019/20



SUPPORTING THE CAUSES

AUSTRALIANS CARE ABOUT 2019/20

At Australian Communities Foundation, our giving community is united not only by a shared vision for a fairer Australia; we're also united in our drive to bring this vision to life – to support positive change together and maximise our impact across the country.

**HEALTH, WELLBEING
& MEDICAL RESEARCH**



\$1,703,729

**EDUCATION, TRAINING
& EMPLOYMENT**



\$1,385,581

**COMMUNITY
& ECONOMIC
DEVELOPMENT**



\$987,500

**INDIVIDUAL/
FAMILY SERVICES
& SUPPORT**



\$811,739

The Australian Communities Foundation team is here to help you achieve your giving goals. Get in touch today to talk about supporting the causes close to your heart.

**(03) 9412 0412
grants@communityfoundation.org.au**

Louise Kuramoto
Head of Philanthropy
& Impact



**CIVIC ENGAGEMENT
& LEADERSHIP**



\$315,540

**SOCIAL INCLUSION,
EQUITY & JUSTICE**



\$364,100

**INDIGENOUS
COMMUNITIES**



\$2,910,179

**ENVIRONMENT,
CONSERVATION &
CLIMATE CHANGE**



\$2,156,130

**ARTS &
CULTURE**



\$1,597,449

**INTERNATIONAL
AID & DEVELOPMENT**



\$269,584

Georgia Mathews
Philanthropy &
Engagement
Manager



Gabby Lam
Grants Coordinator



Daphne Tan
Grants Support
Officer



Andrea Lindores
Impact & Insights
Manager



GRANTS 19/20

RECIPIENT	PROJECT	FUND
HEALTH, WELLBEING & MEDICAL RESEARCH		
Arthritis SA	Kidsflix 2020 Program	The Lane Family Fund
Austin Health	Brain Tumour Support Service at Austin Health	John Cummins Memorial Fund (Extension)
Austin Health	Brain Tumour Support Service	John Cummins Memorial Fund (Extension)
Baker Heart And Diabetes Institute	General charitable purposes	JRA Support Fund
Berwick Healthcare	2019 SEPC project	South Eastern Primary Care Fund
Beyond Blue	General charitable purposes	One Tomorrow Charitable Fund
Beyond Blue	New Access Program	Ashworth Family Fund
Beyond Blue Limited	New Access Program	Abercrombys Charitable Fund
Beyond Blue Limited	General charitable purposes	One Tomorrow Charitable Fund
Beyond Blue Limited	General charitable purposes	The Oak Tree Fund
Beyond Blue Limited	COVID-19 Mental Health Support Service	Sally Browne Fund
Birth for Humankind Limited	Transport to maternity services	Fairness Fund
Breast Cancer Network Australia	General charitable purposes	Abercrombys Charitable Fund
Burnet Institute	General charitable purposes	Hopetoun Fund
Cabrini Health	General charitable purposes	Hopetoun Fund
Canberra Rape Crisis Centre	Assistive equipment for victims of sexual assault	Positive Futures
Cancer Council Victoria	Australia's Biggest Morning Tea	One Tomorrow Charitable Fund
Cancer Council Victoria	Australia's Biggest Morning Tea	Dina Grollo Community Fund
Cancer Council Victoria	Tuxedo Junction Post Doctoral Fellowship 2019	Phyllis Budd Fund
Cancer Council Victoria	General charitable purposes	One Tomorrow Charitable Fund
Cancer Council Victoria	Child obesity study - Empowering Kids Healthy Eating	Ballandry (Peter Griffin Family) Fund
Cancer Council Victoria	General charitable purposes	One Tomorrow Charitable Fund
CanTeen	General charitable purposes	Henkell Family Fund 2
Challenge Cancer Support Network	General charitable purposes	One Tomorrow Charitable Fund
Challenge Cancer Support Network	Challenge Cancer Support Network	One Tomorrow Charitable Fund
Children's Cancer Institute of Australia	Zero Childhood Cancer program	Henkell Family Fund 2
Cystic Fibrosis Queensland	Bounce to Breathe	Slater & Gordon Community Fund
Eastern Victoria GP Training	GP professional development and GP teaching resources	Southern General Practice Education Fund
Enliven Victoria	Cultural competence and mental health	South Eastern Primary Care Fund
Family Life	2019 SEPC Program - Here4U	South Eastern Primary Care Fund
Fight MND	General charitable purposes	Two Cents Fund
Fight MND	Daniher's Drive	Dominic & Anne Gallace Family Fund

RECIPIENT	PROJECT	FUND
HEALTH, WELLBEING & MEDICAL RESEARCH		
Flinders University of South Australia	Research on malignant pleural mesothelioma	Slater & Gordon Health Projects and Research Fund
Florey Institute of Neuroscience and Mental Health	REM sleep consolidation of flexible decision-making capacity	Ralph & Betty Sims Fund
Go Gentle Australia	General charitable purposes	Lois Bryson
Hammond Care	The Dreams Project	Slater & Gordon Community Fund
Hepatitis Victoria	2019 SEPC Training Project - HEPReady	South Eastern Primary Care Fund
iDareDream	The Emotional Literacy & Mindfulness Academy	Demeter Legacy Fund
Individual recipient	2019 SEPC Scholarship Recipient	South Eastern Primary Care Fund
Individual recipient	2019 SEPC Scholarship	South Eastern Primary Care Fund
Individual recipient	LIFT OFF Goulburn Valley Medical Workforce Fund Scholarship 2019	Goulburn Valley Medical Workforce Fund
Individual recipient	LIFT OFF Goulburn Valley Medical Workforce Fund Scholarship 2019	Goulburn Valley Medical Workforce Fund
Individual recipient	LIFT OFF Goulburn Valley Medical Workforce Fund Scholarship 2019	Goulburn Valley Medical Workforce Fund
Individual recipient	Level 3 in Guided Imagery and Music	South Eastern Primary Care Fund
Individual recipient	PCOS Online Training and Picky Eaters and Problem Feeders	South Eastern Primary Care Fund
Individual recipient	Certificate of Primary Care Dermatology	South Eastern Primary Care Fund
Individual recipient	2020 Lift Off GVMW Fund Scholarship – Bachelor of Applied Science/Master of Occupational Therapy	Goulburn Valley Medical Workforce Fund
Individual recipient	2020 Lift Off GVMW Fund Scholarship – Bachelor of Nursing/Bachelor of Paramedicine	Goulburn Valley Medical Workforce Fund
Individual recipient	2020 Lift Off GVMW Fund Scholarship – Bachelor of Nursing	Goulburn Valley Medical Workforce Fund
Individual recipient	2020 Lift Off GVMW Fund Scholarship – Bachelor of Nursing	Goulburn Valley Medical Workforce Fund
Individual recipient	2020 Lift Off GVMW Fund Scholarship – Bachelor of Exercise Science/Master of Exercise Physiology	Goulburn Valley Medical Workforce Fund
Individual Recipient	2019 'Lift Off' GVMWF Scholarship (5 x grants)	Goulburn Valley Medical Workforce Fund
Jesuit Social Services	Support After Suicide program	Heather Watkins Memorial Fund
KidsXpress	Expressive Therapy for Trauma-Impacted Children	Impact 100 Sydney North
Lifeline Australia	General charitable purposes	The Oak Tree Fund
Lifeline Australia	General charitable purposes	Baird Family Fund
Lifeline Australia	Crisis support for COVID-19	Sally Browne Fund
Lord Somers Camp and Powerhouse	Very Special Kids Camps	RO Fund
Lorne Community Hospital	General charitable purposes	Beecher Family Charitable Fund
Lung Foundation Australia	Silicosis Health Guide	Slater & Gordon Health Projects and Research Fund
Mansfield Autism Statewide Services	General charitable purposes	Hardman Family Fund
MarJen Education Services	COVID Greater Shepparton Response: Infection Control Training	Goulburn Valley Medical Workforce Fund

RECIPIENT	PROJECT	FUND
HEALTH, WELLBEING & MEDICAL RESEARCH		
MarJen Education Services	COVID Greater Shepparton Response: Infection Control Training	Goulburn Valley Medical Workforce Fund
McGrath Foundation	General charitable purposes	Williams Fund
Medical Business Services	COVID Greater Shepparton Response: Primary Care component	Goulburn Valley Medical Workforce Fund
Melanoma Institute Australia	Australian Melanoma Genome Project	Morgan Mansell Fund
MND Tasmania	General charitable purposes	Impact 100 Tasmania
Monash Health	CVID/Immunodeficiency Research	Morgan Mansell Fund
Monash Health Community - Cranbourne Centre	2019 SEPC Project	South Eastern Primary Care Fund
Monash University	Australian Regeneration Medical Institute	Hopetoun Fund
Motor Neurone Disease Association Victoria	General charitable purposes	Wanless Family Fund
Movember Foundation	General charitable purposes	One Tomorrow Charitable Fund
MS Research Australia	Supporting research on better treatments for MS	Morgan Mansell Fund
MS Research Australia	The May 50k fundraising campaign	Abercrombys Charitable Fund
Murdoch Childrens Research Institute	Wearable technology for measuring pain in children with cerebral palsy	Unico Community Fund
Murray City Country Coast GP Training	GP professional development and GP teaching resources	Southern General Practice Education Fund
Musculoskeletal Australia	General charitable purposes	Hopetoun Fund
National Breast Cancer Foundation	General charitable purposes	Dina Grollo Community Fund
National LGBTI Health Alliance	QLife: Peer Support for LGBTI Communities	ACF National Crisis Response Fund: COVID-19
Newport Bowls Club	Newport Bowls Club - Accessible toilet	Hobsons Bay Community Fund (Extension)
Odyssey House Victoria	General charitable purposes	Hopetoun Fund
ParKanDo	Supporting online programs and learning	Hobsons Bay Community Fund (Extension)
Peter MacCallum Cancer Institute	General charitable purposes	Hopetoun Fund
Peter MacCallum Cancer Institute	Understanding Co-morbidities with Melanoma	Morgan Mansell Fund
Phoenix Australia	COVID-19 Mental Health knowledge dissemination	Vanraay Family Fund
Prevention United	General charitable purposes	Prevention United
Public Interest Advocacy Centre	Asylum Seeker Health Rights Project COVID-19	Reve Fund O'Shea-Thompson Family Fund Macston Social Endeavour Clack-McLure Fund Dennoch Fund B B & A Miller Fund Bell Family Fund ACF Impact Fund
Public Interest Advocacy Centre	Asylum Seeker Health Rights Project (3rd year instalment)	Williams Fund
ReachOut Australia	COVID-19 Mental Health resources for young people	Vanraay Family Fund

RECIPIENT	PROJECT	FUND
HEALTH, WELLBEING & MEDICAL RESEARCH		
Individual recipient	E book Health Education - Take a Simple Drive to a Healthier Life	South Eastern Primary Care Fund
Royal Children's Hospital	Good Friday Appeal	Dina Grollo Community Fund
Royal Children's Hospital	General charitable purposes	Henkell Family Fund 2
Royal Children's Hospital	Garden therapy program in the Kelpie Ward	The Illuminate Fund
Royal Children's Hospital	General charitable purposes	One Tomorrow Charitable Fund
Royal Flying Doctor Service of Australia	General charitable purposes	Hopetoun Fund
Royal Flying Doctor Service of Australia	General charitable purposes	One Tomorrow Charitable Fund
Royal Flying Doctor Service of Australia (South Eastern Section)	General charitable purposes	The Lane Family Fund
Royal Flying Doctor Service of Australia (Western Operations)	General charitable purposes	Geostudies Fund
Royal Flying Doctor Service of Australia (Western Operations)	General charitable purposes	One Tomorrow Charitable Fund
Royal Flying Doctor Service of Australia (Western Operations)	General charitable purposes	One Tomorrow Charitable Fund
Royal Institute For Deaf And Blind Children	Loud Shirt Day: Team Agent 5 and Unico	Unico Community Fund
Royal Melbourne Hospital Neuroscience Foundation	Brain tumours and Parkinson's Disease research.	One Tomorrow Charitable Fund
SANE Australia	Barbara Hocking Fellowship program	Sally Oatley Memorial Fund
Shake It Up Australia Charitable Trust	Parkinson's Research	The Lane Family Fund
Stroke Foundation	General charitable purposes	Hopetoun Fund
Syndromes without a Name (S.W.A.N) Australia	Funding for a Marketing, Media and Events Officer	N E Renton Bequest
The Alfred Hospital	The Morgan Mansell Prize for Early Career Australian Melanoma Research of the Year	Morgan Mansell Fund
The Alfred Hospital	William Buckland Radiotherapy Centre	Hardman Family Fund
The Alfred Hospital	Melanoma Research	Morgan Mansell Fund
The Funding Network	The Funding Network pledges	Bell Family Fund FGF Charitable Fund
The Social Studio	COVID-19 Scrubs/PPE for hospital staff	Juno Fund
The University of Newcastle	Josephine Dun Scholarship	Miette Skiller Scholarship Fund
Tiny Sparks WA	General charitable purposes	Quinten Curry Tribute
Treehaus Williamstown	Walk A Mile In My Shoes	Hobsons Bay Community Fund (Extension)
Trustee For The Movember Foundation	General charitable purposes	Dina Grollo Community Fund
Trustee For The Movember Foundation	General charitable purposes	Unico Community Fund
U3A Hobsons Bay Williamstown	Safer Access to 'The Cottage'	Hobsons Bay Community Fund (Extension)
Uniting Victoria and Tasmania	Support for the Hearing Voices program	Ralph & Betty Sims Fund

RECIPIENT	PROJECT	FUND
HEALTH, WELLBEING & MEDICAL RESEARCH		
University of Melbourne	Annabelle Potts PhD Scholarship	Miette Skiller Scholarship Fund
University Of New South Wales	Gemma Howell Scholarship - Top up grant	Miette Skiller Scholarship Fund
University Of New South Wales	Jaxon Cooper Scholarship	Miette Skiller Scholarship Fund
Very Special Kids	General charitable purposes	Hopetoun Fund
Very Special Kids	General charitable purposes	Henkell Family Fund 2
Very Special Kids	Children's Hospice - Music Therapy Program	Lily Calvert Memorial Fund
Very Special Kids	General charitable purposes	Strachan Clan Seil Fund
Vision Australia	Seeing Eye Dogs Traineeship Program	Dennoch Fund
Women & Children's Hospital Foundation	Lakinyeri Beach House	Carreker Community Fund
Women And Infants Research Foundation	Preterm Birth Prevention Initiative	RO Fund
yourtown	Kids Helpline - support for COVID-19	Sally Browne Fund
Youth Support and Advocacy Service	Febfast Fundraiser	Beecher Family Charitable Fund

RECIPIENT	PROJECT	FUND
EDUCATION, TRAINING & EMPLOYMENT		
100 Story Building	General charitable purposes	Hart Line Fund
100 Story Building	Story Hubs Pilot	ACF Reserve Fund
Aboriginal Literacy Foundation	Beaufort and District Indigenous After School tutorial program	EastWeb Fund
African Communities Foundation Australia	2020 Homework Club: African Communities Foundation	Fairness Fund Ballandry (Peter Griffin Family) Fund Dennoch Fund
Ardoch	General charitable purposes	Holding Redlich Social Justice Fund
Ardoch	Literacy Buddies program	Slater & Gordon Community Fund
Asylum Seekers Centre	Improved employment outcomes for Asylum Seekers	Impact 100 Sydney North
Australian Film Television and Radio School (AFTRS)	Kenneth Myer Fellowship	Kenneth Myer Fellowship
Australian Literacy And Numeracy Foundation Limited	General charitable purposes	JRA Support Fund
Australian Universities International Directors' Forum	Tony Adams Fund Staff Development Grant	Tony Adams Extension Fund
BackTrack Youth Works	BackTrack Runners - equipment for participants	Anna Wearne Fund
Ballarat Regional Multicultural Council	2020 Homework Club	Homework Club Partnership Fund (Extension)
Banksia Gardens Community Services	Project REAL Collective Impact Initiative	NG Family Fund
Banksia Gardens Community Services	Banksia Gardens' Kenley Court Neighbourhood House Study Group	Melbourne Airport Community Fund
Banyule Community Health Service	The Pavilion School - Changing Gears Program	Anna Wearne Fund

RECIPIENT	PROJECT	FUND
EDUCATION, TRAINING & EMPLOYMENT		
Berry Street Victoria	Pathways to the Future project - Year 2	Williams Fund
Charles Sturt University	Mayday Hills: virtual tour linked to life and death	Telematics Course Development Fund
Creeds Farm Living and Learning Centre	Creeds Farm Homework Club	Melbourne Airport Community Fund
Deakin University	Pitcher Partners Scholarship Program - 2019 pledge	Pitcher Partners Charitable Fund
Deakin University	Co-Opera Tour of TOSCA	Ballandry (Peter Griffin Family) Fund
Deutsche Schule Melbourne Building Fund	General charitable purposes	Henkell Family Fund 2
Disability Resources Centre	Australian Disability & Indigenous Peoples' Education Fund (ADIPEF)	Ralph & Betty Sims Fund
Djerriwarrh Community & Education Services	2020 Homework Club: Djerriwarrh Community & Education Services	Fairness Fund
Djerriwarrh Community & Education Services	2020 Homework Club: Djerriwarrh Community & Education Services	Homework Club Partnership Fund
Duke Street Community House	No Barriers to Learning English	Melbourne Airport Community Fund
Duke Street Community House	Breaking Digital Barriers	Melbourne Airport Community Fund
Edmund Rice Community and Refugee Services	2020 Homework Club: Tarneit Primary School	Homework Club Partnership Fund
Edmund Rice Community and Refugee Services	2020 Homework Club: Tarneit Secondary School	Rana and Alan Fund
Edmund Rice Community and Refugee Services	2020 Homework Club: Tarneit Secondary School	Homework Club Partnership Fund
Edmund Rice Services	2020 Homework Club: Edmund Rice Services	Ballandry (Peter Griffin Family) Fund Homework Club Partnership Fund
Edmund Rice Services	2020 Homework Club: Kurunjang Primary School	Ballandry (Peter Griffin Family) Fund Homework Club Partnership Fund
Footscray City College	Dare to Dream Scholarship program	John Cummins Memorial Fund (Extension)
Foundation For Rural and Regional Renewal	Back to School Program	Wealth Mentoring Group Fund
Geelong Ethnic Communities Council	2020 Homework Club: Geelong	Alf & Meg Steel Fund Dennoch Fund
Geelong Ethnic Communities Council	2020 Homework Club: Geelong	Homework Club Partnership Fund
Global Society Foundation	Tony Adams Scholar awarded by the Global Society Foundation	Tony Adams Extension Fund
Grace Connection	2020 Homework Club: Grace Connection	Homework Club Partnership Fund
Grace Connection	2020 Homework Club: Grace Connection	Sally Oatley Memorial Fund
Graduate Women Victoria	Graduate Women Victoria Scholarship Program 2020 (operations)	Graduate Women Victoria
Graduate Women Victoria	Graduate Women Victoria Scholarship Program 2020	Graduate Women Victoria Donors Fund
Homestead Community and Learning Centre	Roxy Resilient Women	Melbourne Airport Community Fund
Hope Co-Op	The Living Support Fund – Sponsorship of refugee/asylum seeker student	Ballandry (Peter Griffin Family) Fund

RECIPIENT	PROJECT	FUND
EDUCATION, TRAINING & EMPLOYMENT		
Inner West Community Foundation	IWCF & Victoria University Financial Literacy Program targeting communities in Melbourne's West	Hobsons Bay Community Fund
Jesuit Social Services	2020 Homework Club: Flemington	Homework Club Partnership Fund
Jesuit Social Services	2020 Homework Club: Flemington	Homework Club Partnership Fund
Kalamunda Primary Education Support Centre	Equipment purchase for education support centre	Quinten Curry Tribute
Kensington Neighbourhood House	Women into Work	Melbourne Airport Community Fund
Kensington Neighbourhood House	Strong Foundations	Melbourne Airport Community Fund
Kensington Neighbourhood House	Women Into Work	Melbourne Airport Community Fund
Kids Under Cover	Kids Under Cover scholarships	EM Horton Family Fund
King David School Scholarship Fund	Science and Math Scholarships for Girls	DDJE Fund
Kororoit Creek Neighbourhood House	English Classes - Free Childcare Program	Melbourne Airport Community Fund
Kororoit Creek Neighbourhood House	2020 Homework Club: Albion Primary School	Homework Club Partnership Fund
LaTrobe University	David Jolley Leadership Award	David Jolley Leadership Award
Laverton Community Children's Centre	Alternative Care Yard Upgrade	Hobsons Bay Community Fund
Leading Note Music Education	Crashendo program	Hamer Family Fund
Marriott Support Services	General charitable purposes	Baird Family Fund
Meadow Heights Learning Shop	2020 Homework Club: Meadow Heights Learning Shop	Baker Watson Fund
Meadow Heights Learning Shop	2020 Homework Club: Meadow Heights Learning Shop	Homework Club Partnership Fund
Melbourne Girls College	The Giang Nguyen Science Prize	Thu Giang Nguyen Fund
Mental health and Well-Being Foundation	2020 Homework Club: Fundi Homework Club	Ballandry (Peter Griffin Family) Fund Dennoch Fund
MiCare	2020 Homework Club: Werribee	John Cummins Memorial Fund
MiCare	2020 Homework Club: Werribee	Homework Club Partnership Fund
Monash University	Charlee Ferrar Scholarship	Miette Skiller Scholarship Fund
Monash University	Achieving Potential Humanitarian Scholarship	Mangala Fund
Nalderun Aboriginal Services	2020 Homework Club: Nalderun Aboriginal Services	Sunning Hill Fund Homework Club Partnership Fund
Nalderun Aboriginal Services	2020 Homework Club: Nalderun Aboriginal Services	Homework Club Partnership Fund
Northern College of Arts and Technology	Dare to Dream Scholarship program	John Cummins Memorial Fund (Extension)
Ourschool	General charitable purposes	Koshland Innovation Extension Fund
Outside the Box - Dyslexia Art Club	Dyslexia Awareness Week - raising awareness in schools	Hobsons Bay Community Fund (Extension)
Preston Neighbourhood House	Tiered Transitional Training	Melbourne Airport Community Fund
Preston Reservoir Adult Community Education	Career Planning & Pathway Program	Melbourne Airport Community Fund

RECIPIENT	PROJECT	FUND
EDUCATION, TRAINING & EMPLOYMENT		
Preston Reservoir Adult Community Education	Transitioning to Work Program	Melbourne Airport Community Fund
Raising Literacy Australia	Milestones for Life	Impact 100 South Australia
RMIT	Herbert and Inge Littauer Scholarship 2020	Herbert and Inge Littauer Fund
SisterWorks	General charitable purposes	Hilary Dixon And John Dempster
SisterWorks	General charitable purposes	Hilary Dixon And John Dempster
St Hilda's College	Humanitas Scholarship	The Ngaruk Fund
St Vincent De Paul Society Victoria	2020 Homework Club: Maidstone Reading Club	Ballandry (Peter Griffin Family) Fund Dennoch Fund
St Vincent De Paul Society Victoria	2020 Homework Club: Maidstone Reading Club	Homework Club Partnership Fund
Stars Foundation	Aboriginal Girls' Education Project	Social Justice Fund
State Library of Victoria	General charitable purposes	Ballandry (Peter Griffin Family) Fund
Stewart House	General charitable purposes	The Lane Family Fund
Swinburne University	Charles D'Aprano Award	Charles D'Aprano Award Fund
Swinburne University	First in Family Scholarships	Apollo Fund
Swinburne University	Student Emergency Fund	Apollo Fund
Teach For Australia	General charitable purposes	Charles David Fund
The Big Issue	Women's Subscription Enterprise	Story Street Fund
The Smith Family	Partnerships for Education Wyndham	Dennoch Fund
The Smith Family	General charitable purposes	Geostudies Fund
The Smith Family	General charitable purposes	Henkell Family Fund 2
The Smith Family	General charitable purposes	Geostudies Fund
The Smith Family	Let's Read program	Hart Line Fund
The Smith Family	General charitable purposes	Geostudies Fund One Tomorrow Charitable Fund
The Smith Family	General charitable purposes	Geostudies Fund One Tomorrow Charitable Fund
The Social Studio	Youth Development Program	Equal Access Fund
The United Vietnamese Buddhist Congregation of SE Melbourne	2020 Homework Club: Hoa Nghiem	Homework Club Partnership Fund
Thrive Refugee Enterprises	Exposure and Lead Generation for Refugee-owned businesses	Vanraay Family Fund
Tomorrow Today Foundation	Parents Early Education Partnership Program	Dennoch Fund
Trinity College	Susan Dahn Women's Scholarship Fund	Dahkota Fund
University College	Residential scholarship	Williams Fund
University College	University College Scholarship Program	McGregor Family Fund
University of Melbourne	Curtis Dyt PHD scholarship	Miette Skiller Scholarship Fund
University of Melbourne	Scholarship	Education Support Fund
University of Melbourne	Dean's Fund for Science Scholarships	Running Waters Fund

RECIPIENT	PROJECT	FUND
EDUCATION, TRAINING & EMPLOYMENT		
Wallan Gateway Charitable Initiatives	2020 Homework Club: Wallan	Homework Club Partnership Fund
Wallan Gateway Charitable Initiatives	2020 Homework Club: Wallan	Sally Oatley Memorial Fund
Warringa Park School	2020 Homework Club: Warringa Park School	Homework Club Partnership Fund
Western Chances	General charitable purposes	DDJE Fund
Whittlesea Community Connections	2020 Homework Club: City of Whittlesea	Sunning Hill Fund John Cummins Memorial Fund Sally Oatley Memorial Fund
Whittlesea Community Connections	2020 Homework Club: City of Whittlesea	Homework Club Partnership Fund
Wimmera Development Association	2020 Homework Club: Horsham and Nhill	Homework Club Partnership Fund
Winacomm Association	General charitable purposes	Baird Family Fund
Wingate Avenue Community Centre	#WorkTOGETHER	Melbourne Airport Community Fund
Wonthaggi Neighbourhood Centre	Bass Coast L2P program	Gerard Patrick Lonergan Scholarship Fund
Wyn Bay LLEN	Building Community Capability in Hobsons Bay	Hobsons Bay Community Fund
Wyndham Community and Education Centre	2020 Homework Club: Flemington	Homework Club Partnership Fund
Yalari	General charitable purposes	Wa Initiative
Youth Plus Foundation	YouthPlus Living Support Fund (LSF) - Hope Co-op - transport costs of asylum seeker tertiary students	John Cummins Memorial Fund

RECIPIENT	PROJECT	FUND
COMMUNITY & ECONOMIC DEVELOPMENT		
Alliance For Gambling Reform	Down, down, bets are down - Coles and \$1 bets	Hart Line Fund ACF Impact Fund Alf & Meg Steel Fund Fairer Futures Fund Clive St
Australia 21	Treble Your Impact campaign	Social Justice Fund
Australian Council of Social Services	Poverty and Inequality Partnership in Australia	Social Justice Fund Hart Line Fund ACF Impact Fund
Australian Council of Social Services	Raise the Rate Campaign	ACF Impact Fund Silver Gold Fund Alf & Meg Steel Fund Wahroonga Fund Johnstone Gumption Fund Initiate Action Community Fund Macston Social Endeavour Fiona Shields Fund Amos Family Account Hardman Family Fund O'Shea-Thompson Family Fund
Australian Council of Social Services	Raise the Rate Campaign	Mannifera
Australian Council of Social Services	Poverty and Inequality Partnership in Australia	Hart Line Fund ACF Impact Fund Social Justice Fund

RECIPIENT	PROJECT	FUND
COMMUNITY & ECONOMIC DEVELOPMENT		
Australian Council of Social Services	COVID-19 Community sector rescue package campaign	Sally Browne Fund
Commons Social Change Library	Building capacity for advocacy and campaigning	Alf & Meg Steel Fund
Human Rights Law Centre	Hands off Our Charities Alliance	Mannifera
Refugee Council of Australia	General charitable purposes	Sunning Hill Fund
State Library of Victoria	Australian Learning Lecture Initiative	Koshland Innovation Extension Fund
The Australia Institute	General charitable purposes	Lois Bryson
The Menzies Research Centre	Establishment of the Robert Menzies Institute at Melbourne University	Trikojus Education Fund
Thrive Refugee Enterprises	General charitable purposes	Fairness Fund
Thrive Refugee Enterprises	General charitable purposes	Clare Murphy Fund
Thrive Refugee Enterprises	General charitable purposes	Beecher Family Charitable Fund

RECIPIENT	PROJECT	FUND
INDIVIDUAL/FAMILY SERVICES & SUPPORT		
Anglicare SA	Magdalene Centre	The Bradley-Weightman Charitable Fund
Asylum Seeker Resource Centre	Repair/upgrade works to commercial kitchen	Hamer Family Fund
Asylum Seeker Resource Centre	General charitable purposes	Williams Fund
Asylum Seeker Resource Centre	General charitable purposes	O'Shea-Thompson Family Fund
Asylum Seeker Resource Centre	General charitable purposes	Sunning Hill Fund
Asylum Seeker Resource Centre	General charitable purposes	Nicholas R Taylor Fund
Asylum Seeker Resource Centre	General charitable purposes	Heartwood
Asylum Seeker Resource Centre	Emergency Cash Appeal	Clare Murphy Fund Espero Fund Hart Line Fund Sally Oatley Memorial Fund Rana and Alan Fund Assia Altman Fund
Australian German Welfare Society	General charitable purposes	Henkell Family Fund 2
Australian Sports Foundation	Porepunkah Baseball Club	Positive Ideas Group
Barnardos Australia	General charitable purposes	The Bradley-Weightman Charitable Fund
Bendigo Community Health Services	Who Are Our Neighbours	EastWeb Fund
Berry Street	Berry Street	Unico Community Fund
Berry Street Victoria	General support in times of COVID-19	Juno Fund
Berry Street Victoria	Connecting Vulnerable Families with Support During COVID-19	Vanraay Family Fund
Blue Dragon Children's Foundation	General charitable purposes	One Tomorrow Charitable Fund
Blue Light Victoria	Blue Edge Program	Slater & Gordon Community Fund
Brisbane Youth Service	General charitable purposes	Holding Redlich Social Justice Fund
Brisbane Youth Service	General charitable purposes	Holding Redlich Social Justice Fund
Brotherhood of St Laurence	General charitable purposes	Dina Grollo Community Fund

RECIPIENT	PROJECT	FUND
INDIVIDUAL/FAMILY SERVICES & SUPPORT		
Brotherhood of St Laurence	General charitable purposes	Dina Grollo Community Fund
Bubbling Up	Experts Explain Series	Hobsons Bay Community Fund (Extension)
Canberra Rape Crisis Centre	General charitable purposes	Positive Futures
CaraCare	Therapeutic gardening groups for children and young people	Sandcastle Projects
Carers Links Men's Group	Family Day 2019	Hobsons Bay Community Fund (Extension)
Catherine House	General charitable purposes	Carreker Community Fund
CBM Australia	General charitable purposes	The Bradley-Weightman Charitable Fund
Cerebral Palsy Alliance	General charitable purposes	Geostudies Fund
Church Of Christ Williamstown VIC	Helping Hand Cafe - Essential Equipment	Hobsons Bay Community Fund (Extension)
Crohns and Colitis Australia	Live Fearless Challenge	Beecher Family Charitable Fund
Dandelion Support Network	Support for families escaping family violence	Slater & Gordon Community Fund
Daydawn Advocacy Centre	Eviction prevention and emergency accommodation for people experiencing homelessness	Tass Nyungar Fund
Dementia Australia	General charitable purposes	Hopetoun Fund
Domestic Violence Victoria (DV VIC)	Family Violence Sector Capacity Building Project	Johnstone Gumption Fund Jump Start
Dungala Kaiela Foundation	Dungala Kaiela Writing Awards	Fairer Futures Fund
Dungala Kaiela Foundation	Endowment Fund for Rumbalara Football Netball Club	Fairer Futures Fund
Eat Up Australia	UNICO Volunteer Day	Unico Community Fund
Equine Pathways Australia	General charitable purposes	Vicki Standish Family Fund
Ethiopiaid Australia	General charitable purposes	The Bradley-Weightman Charitable Fund
Family Life	General charitable purposes	Unico Community Fund
FareShare Australia	FareShare's Abbotsford Kitchen	Unico Community Fund
FareShare Australia	General charitable purposes	Clive St
Farnham Street Neighbourhood Learning Centre	Resilient Refugee Youth	Melbourne Airport Community Fund
Foodbank Victoria	General charitable purposes	Geostudies Fund
Foodbank Victoria	General charitable purposes	One Tomorrow Charitable Fund Geostudies Fund
Foodbank Victoria	General charitable purposes	Geostudies Fund
Foodbank Victoria	General charitable purposes	Geostudies Fund
Foodbank Victoria	Emergency food relief for COVID-19	Sally Browne Fund
Foodbank Victoria	COVID-19 response	Clare Murphy Fund
Foodbank Victoria	Bushfire emergency food relief appeal	Geostudies Fund
Foster Care Association Of Victoria	General charitable purposes	RO Fund
Girls Rock! Melbourne	General charitable purposes	Scarlet's Fund

RECIPIENT	PROJECT	FUND
INDIVIDUAL/FAMILY SERVICES & SUPPORT		
Heads Together for ABI	Heading Out Teen 2019/20 program	Alice Sloan Fund
Hobson's Bay Mens Shed Network	Hobson's Bay Men's Shed Gardening Group - Heritage and Indigenous Herb Garden	Hobsons Bay Community Fund (Extension)
Independence Australia (Paragard Victoria)	General charitable purposes	Ralph & Betty Sims Fund
Individual recipient	2019 Sally Isaac Memorial Scholarship Award recipient	Sally Isaac Memorial Scholarship Fund
Kids Under Cover	General charitable purposes	Dina Grollo Community Fund
Kids Under Cover	General charitable purposes	FGF Charitable Fund
Kids Under Cover	WALK FOR COVER campaign	Beecher Family Charitable Fund
Kids Under Cover	General charitable purposes	Dina Grollo Community Fund
Jesuit Refugee Service (Australia)	Supporting People Seeking Asylum During COVID-19	Ballandry (Peter Griffin Family) Fund
Launch Housing	Emergency COVID-19 aid for people experiencing homelessness	Sally Browne Fund Story Street Fund Juno Fund
Launch Housing	COVID-19 Brokering access to screening & frontline support	Clare Murphy Fund
Launch Housing	Supporting front line workers to stop spread of COVID-19	Reve Fund
Launch Housing	Support Frontline Workers Fighting to Stop Spread of COVID-19	Vanraay Family Fund
Law and Advocacy Centre for Women	Crisis Support for Women in the Criminal Justice System	ACF National Crisis Response Fund: COVID-19
Marriott Support Services	General charitable purposes	Baird Family Fund
Martin Luther Homes Boronia	General charitable purposes	Henkell Family Fund 2
Martin Luther Homes Boronia	General charitable purposes	Henkell Family Fund 2
MECWA Community Care	General charitable purposes	Hopetoun Fund
MECWA Community Care	PARO therapeutic seal for aged care residents	Alf & Meg Steel Fund
Melbourne City Mission	Homelessness Service	Henkell Family Fund 2
Mettle Women	Protecting Women's Employment	Fairness Fund
Mission Australia	Mission Australia Centre (Surry Hills) - Financial counsellor	Fairness Fund
Mission Australia	General charitable purposes	The Bradley-Weightman Charitable Fund
Multiple Sclerosis	MS Shared Supported Accommodation house, Williamstown - linen and towel replacement	Hobsons Bay Community Fund (Extension)
Nardine Wimmin's Refuge	Art & music program	Tass Nyungar Fund
National Homelessness Collective	COVID-19 Homelessness Crisis Support	Clare Murphy Fund
National Homelessness Collective	2020 Sleeping Bags for Homelessness Drive	Durrabool Fund
North Shore Women's Benevolent Association	Mary's House	Holding Redlich Social Justice Fund
North Shore Women's Benevolent Association Limited	General charitable purposes	Holding Redlich Social Justice Fund
Older Persons Advocacy Network	COVID-19 Support and Advice	Sally Browne Fund
One Voice For Aussie Youth	Mobile Shower Services - Impact Expansion Project	Impact 100 WA

RECIPIENT	PROJECT	FUND
INDIVIDUAL/FAMILY SERVICES & SUPPORT		
OzChild	OzChild 2019 Christmas Appeal	One Tomorrow Charitable Fund
OzChild	Chance to Shine 2020/2021	Juno Fund
OzChild	General charitable purposes	One Tomorrow Charitable Fund
Pets of the Homeless	General charitable purposes	Charles David Fund
Radfly	General charitable purposes	Davie Family Fund
Refugee Legal	Family Violence and Migration Law Project	ACF National Crisis Response Fund: COVID-19
Robina Scott Kindergarten	Robina Scott Intergenerational Community Room	Hobsons Bay Community Fund (Extension)
Sacred Heart Mission St Kilda	General charitable purposes	Initiate Action Community Fund
Safe Steps Family Violence Response Centre	The Pets in Crisis program	Charles David Fund
Safe Steps Family Violence Response Centre	Sleep pod for Crisis Response and Counselling Staff	Kaplan Dascalu Fund
Safe Steps Family Violence Response Centre	The Pets in Crisis program	Charles David Fund
Salvation Army Southern Territory Social Work	Homeless families support in Melbourne	Henkell Family Fund 2
Salvation Army Southern Territory Social Work	General charitable purposes	Dina Grollo Community Fund
Salvation Army Southern Territory Social Work	General charitable purposes	Geostudies Fund
Salvation Army Southern Territory Social Work	General charitable purposes	Hopetoun Fund
Salvation Army Southern Territory Social Work	Christmas Appeal	Geostudies Fund
Salvation Army Southern Territory Social Work	General charitable purposes	The Bradley-Weightman Charitable Fund
Salvation Army Southern Territory Social Work	General charitable purposes	One Tomorrow Charitable Fund
SecondBite	General charitable purposes	Charles David Fund
SecondBite	General charitable purposes	Abercrombys Charitable Fund
Share the Dignity	General charitable purposes	Unico Community Fund
Somebody's Daughter Theatre	General charitable purposes	Beeton Family Fund
South Kingsville Community Centre	South Kingsville Community Centre Holiday Club	Hobsons Bay Community Fund (Extension)
Southern Cross Kids' Camps	Transportation for Southern Cross Kids' Camps - Knox	Wealth Mentoring Group Fund
St Mary's House of Welcome	COVID-19 response	Juno Fund
St Vincent de Paul Society National Council of Australia	Vinnies Bushfire Appeal	Dennoch Fund
Streat	General charitable purposes	Semaphore Fund
Streat	General charitable purposes	One Tomorrow Charitable Fund
StreetSmart Australia	General charitable purposes and Collective Community Grants	Story Street Fund

RECIPIENT	PROJECT	FUND
INDIVIDUAL/FAMILY SERVICES & SUPPORT		
StreetSmart Australia	Collective Community Grants	Alf & Meg Steel Fund
StreetSmart Australia	Collective Community Grants	B B & A Miller Fund
StreetSmart Australia	Collective Community Grants - COVID Response	Unico Community Fund
StreetSmart Australia	SmartMeals and Winter Appeal	Durrabool Fund
Tabulam and Templer Homes for the Aged	General charitable purposes	Henkell Family Fund 2
Tabulam and Templer Homes for the Aged	General charitable purposes	Henkell Family Fund 2
The Burdekin Association	Early Intervention and Family Support Program	The Lane Family Fund
The Compassionate Friends Victoria	General charitable purposes	The Caroline Durré Sub Fund
The Funding Network	One Girl and Nappy Collective (The Funding Network)	Katrina's Sparkle Fund
The Haven Foundation	Contribute to the building of 16 fully self-contained one bedroom units in Geelong	Ralph & Betty Sims Fund
The One Box Group	The One Box initiative - Melbourne region	Clemenger Staff Fund
The Torch Project	Torch Project: new artwork racking and storage infrastructure	B B & A Miller Fund
Uniting Victoria and Tasmania	General charitable purposes	Hopetoun Fund
University of South Australia	Open Door Health Justice Clinic	Wanless Family Fund
Victoria Police Legacy Scheme	Legacy support to families	Sally Browne Fund
Victorian Foundation for Survivors of Torture	General charitable purposes	The Caroline Durré Sub Fund
Vision Australia	General charitable purposes	Hopetoun Fund
White Lion	Support At Risk young people in accessing online support through COVID-19	Vanraay Family Fund
Willum Warrain Aboriginal Association	Ex-offenders Training Program	Koondée Woonga-gat Toor-rong
Womens and Girls Emergency Centre	2019 Impact 100 SN Recipient - SEED Project	Impact 100 Sydney North
Womens and Girls Emergency Centre	2019 Impact 100 SN Recipient - SEED Project	Impact 100 Sydney North
Young People's Legal Rights Centre	Youthlaw's Family Violence program	Anna Wearne Fund
Youth Off The Streets	General charitable purposes	Dina Grollo Community Fund
Youth Off The Streets	Don Bosco Home	Holding Redlich Social Justice Fund

RECIPIENT	PROJECT	FUND
CIVIC ENGAGEMENT & LEADERSHIP		
Abbotsford Convent Foundation	General charitable purposes	Henkell Family Fund 2
Australasian Centre for Corporate Responsibility	Shareholder Activism	ACF Impact Fund Hart Line Fund Wanless Family Fund Williams Fund
Centre for Policy Development	General charitable purposes	Fairer Futures Fund
Centre for Policy Development	Climate risks and opportunities for Australia	Hamer Family Fund
Change Agency	Community Organising Fellowship - 2020 Intern program	Digger & Shirley Martin Environment Fund
Community Radio Federation	3CR Community Radio Fibre 1000 Update	Miller Fund
Documentary Australia Foundation	Stories With Impact 2019: Geeta, The Lake of Scars, Backtrack Boys	Scarlet's Fund
Documentary Australia Foundation	WILD THINGS - social impact campaign for feature film	Hamer Family Fund
Documentary Australia Foundation	Democracy For Sale	Clack-McLure Fund ACF Impact Fund Omi-Albers Fund The Ngaruk Fund Agnes Robertson Fund Fairer Futures Fund Wahroonga Fund Story Street Fund Mundy-Westall 'Moment-in-Time' Fund Wanless Family Fund Macston Social Endeavour Vanraay Family Fund Hardman Family Fund
Documentary Australia Foundation	Democracy For Sale	ACF Impact Fund - Extension (Non Tax Deductible)
Documentary Australia Foundation	Democracy for Sale documentary	Mannifera
Documentary Australia Foundation	The Lake of Scars Documentary	O'Shea-Thompson Family Fund
GetUp!	General charitable purposes	Lois Bryson
Into Our Hands Community Foundation	Transfer of Wealth Pilot	Alf & Meg Steel Fund
Link Health and Community	Opening Doors: Community Leadership Program for Social Inclusion	Global Leadership Fund
Per Capita Australia	Per Capita Annual Tax Survey 2020	Social Justice Fund
Reichstein Foundation	Administration of the Mannifera sub-fund	Mannifera
Responsible Technology Australia	Developing a Digital Rights Ecosystem in Australia	ACF Impact Fund Mannifera
Spotswood Kingsville RSL Sub Branch	Engaging community in public facilities	Hobsons Bay Community Fund (Extension)
Sydenham Neighbourhood House	Train the Trainer on Youth Mentorship	Melbourne Airport Community Fund
The Australia Institute	Campaign for the National Climate Disaster Fund	Fairer Futures Fund
The Environment Centre NT Public Fund	General charitable purposes	Curlew Fund
The Funding Network	The Funding Network - VIC office operations	Clare Murphy Fund
The Funding Network	The Funding Network - VIC office operations and growth	Fairness Fund

RECIPIENT	PROJECT	FUND
CIVIC ENGAGEMENT & LEADERSHIP		
The Funding Network	Pledges from TFN Event: The Nappy Collective, Anika Legal, One Girl	Bell Family Fund
The Funding Network	The Funding Network Victoria Office	Initiate Action Community Fund
Tour de Cure	Peter Mac Ride 2019	Clemenger Staff Fund
Walkley Foundation	Mentorship Program	Dennoch Fund
Western Sydney University	General charitable purposes	Hart Line Fund

RECIPIENT	PROJECT	FUND
SOCIAL INCLUSION, EQUITY & JUSTICE		
Amnesty International Australia	General charitable purposes	O'Shea-Thompson Family Fund
Amnesty International Australia	General charitable purposes	JRA Support Fund
Centre for Australian Progress	Rapid Advocacy Fund initiatives	Rapid Advocacy Fund
Centre for Australian Progress	Rapid Advocacy Fund initiatives	Rapid Advocacy Fund
Climate And Health Alliance	Climate Change is a Health Emergency	GROUNDSWELL
Community Broadcasting Foundation	Community broadcasting in disaster-impacted communities	Beeton Family Fund
Courage To Care (VIC)	Inspiring Upstanders in School Communities	Judy Glick
Cricket Victoria	Lohy's Little Legends Cricket Clinics	John Cummins Memorial Fund (Extension)
Digital Rights Watch	Core funding for 12 months	Mannifera
Fair Agenda	Supporting women to escape abuse	Lois Bryson
Farnham Street Neighbourhood Learning Centre	Resilient Refugee Youth	Melbourne Airport Community Fund
German Lutheran Trinity Church	General charitable purposes	Henkell Family Fund 2
Human Rights Law Centre	Asylum Seeker and Refugee Rights Unit	Fairness Fund
Human Rights Law Centre	General charitable purposes	Beecher Family Charitable Fund
Human Rights Law Centre	General charitable purposes	Sunning Hill Fund
Human Rights Law Centre	Asylum Seeker & Refugee Rights Unit	Lois Bryson
Human Rights Law Centre	General charitable purposes	Ballandry (Peter Griffin Family) Fund
Human Rights Law Centre	COVID-19 Pandemic implications for democracy	Clare Murphy Fund
Human Rights Law Centre	General charitable purposes	Sunning Hill Fund
Human Rights Watch Australia	General charitable purposes	Beecher Family Charitable Fund
Human Rights Watch Australia	General charitable purposes	Fairness Fund
Justice Connect	Helping the Helpers	Sally Browne Fund
Lord Somers Camp and Powerhouse	Very Special Kids Camps	RO Fund
Melbourne Writers Festival	Auslan interpretation	B B & A Miller Fund
Our Watch	Progress in Prevention, enhancing engagement project	Johnstone Gumption Fund

RECIPIENT	PROJECT	FUND
SOCIAL INCLUSION, EQUITY & JUSTICE		
Outloud	BYDS RESPECT	Impact 100 Sydney North
Refugee Council of Australia	MOSAIC Canadian Private Sponsorship of Refugees program	Four Eleven Seven Clack-McLure Fund Ballandry (Peter Griffin Family) Fund
Refugee Council of Australia	General charitable purposes	Sunning Hill Fund
Refugee Council of Australia	Advocacy work on a comprehensive policy reform agenda for refugees and asylum seekers in light of COVID-19	Assia Altman Fund
Refugee Council of Australia	MOSAIC Canadian Private Sponsorship of Refugees program	Espero Fund Fairer Futures Fund Hart Line Fund
Refugee Legal	General charitable purposes	The Caroline Durré Sub Fund
Refugee Legal	Medical Evacuation Response Group	Raettvisa Fund
Refugee Legal	General charitable purposes	The Caroline Durré Sub Fund
Rise (Refugee Survivors & Ex-Detainees)	General charitable purposes	Hart Line Fund
Scripture Union Victoria	General charitable purposes	Ralph & Betty Sims Fund
The Australia Institute	TAI Research Fund	Geddes Nairn Development Fund
The Centre For Public Integrity	Core Funding	Fairer Futures Fund Mannifera
The Centre For Public Integrity	Core funding	Mannifera
The Equality Project	Better Together 2020 Conference - Accessibility and safety support	Hobsons Bay Community Fund (Extension)
The Gr8 M8s Foundation	Yarra Wild Beasts basketball/soccer school holiday camps	Espero Fund
The Gr8 M8s Foundation	Yarra Wild Beasts December 2019 USA trip	Team Miller
The Trustee for New Democracy Foundation	Public Interest Journalism Initiative	Wanless Family Fund Story Street Fund Williams Fund Fairer Futures Fund Hart Line Fund Clack-McLure Fund ACF Impact Fund
The Trustee for The Conversation Trust	Reader Donation Campaign	Positive Ideas Group
Vietnamese Association of Hobsons Bay	Keeping members connected through use of a technology loan system	Hobsons Bay Community Fund (Extension)
White Lion	General charitable purposes	Dina Grollo Community Fund
Williamstown Cricket Club	All Abilities XI Cricket Competition	Hobsons Bay Community Fund (Extension)
Williamstown CYMS Cricket Club	Developing a Junior Girls Cricket Program	Hobsons Bay Community Fund (Extension)
Windeward Bound Foundation	Windeward Bound Youth Leadership Voyage	David Boykett Tall Ships Voyaging Fund

RECIPIENT	PROJECT	FUND
INDIGENOUS COMMUNITIES		
350.Org	Our Islands Our Home campaign	B B & A Miller Fund Alf & Meg Steel Fund ACF Impact Fund
Aboriginal Evangelical Fellowship Family and Youth Services	Chaplaincy support in Aboriginal communities in Australia	Ralph & Betty Sims Fund
Archie Roach Foundation	General charitable purposes	Beeton Family Fund
Aurora Education Foundation	High School Program (Aspiration Initiative)	Keith & Jeannette Ince Fund
Australian Youth Climate Coalition	General charitable purposes and SEED	Fairer Futures Fund
Bangarra Dance Theatre	General charitable purposes	JRA Support Fund
Brotherhood of St Laurence	1710 Fellowship for Indigenous Leadership	Fellowship for Indigenous Leadership Fund
Bubup Wilam For Early Learning	General charitable purposes	Sunning Hill Fund
Burnet Institute	Strengthening primary health care for Aboriginal and Torres Strait Islander adolescents	B B & A Miller Fund
Bush Heritage Australia	General charitable purposes	Koshland Innovation Extension Fund
Bush Heritage Australia	General charitable purposes	Koshland Innovation Extension Fund
Bush Heritage Australia	Nardoo Hills management	Geostudies Fund
Bush Heritage Australia	Land purchase and restoration activities	Mundy-Westall 'Moment-in-Time' Fund
Castlemaine Community House	Nalderun Aboriginal Services - MUDMAPS project	Koondie Woonga-gat Toor-rong
Central Australian Aboriginal Congress	Central Australian Viral Zone to stop the spread of COV-19 to remote First Nations communities	ACF Impact Fund
Central Australian Aboriginal Congress	Central Australian Viral Zone to stop the spread of COV-19 to remote First Nations communities	Tass Nyungar Fund
Children's Ground	Safeguarding First Language and Culture: Resources for the next generation	B B & A Miller Fund
Children's Ground	Community-led prevention of COVID-19 in remote areas	Juno Fund
Children's Ground	General charitable purposes	Nicholas R Taylor Fund
Daydawn Advocacy Centre	Eviction prevention for Aboriginal families	Tass Nyungar Fund
Disability Resources Centre	Australian Disability & Indigenous Peoples' Education Fund (ADIPEF)	Ralph & Betty Sims Fund
Djirra	In-house social worker delivering training and secondary consultation	Holding Redlich Social Justice Fund
Earbus Foundation of Western Australia	HEAAR Youth Project (Healthy Ears for Aboriginal and At-Risk youth)	Impact 100 WA
Environs Kimberley	General charitable purposes	Melliodora Fund
Firesticks Alliance Indigenous Corporation	Firesticks Alliance Mentorship program	EM Horton Family Fund
Footscape	Diabetes foot care kits for Indigenous Australians	EastWeb Fund
Friends of the Earth Melbourne	Stop Floodplain Development Action Plan	Melliodora Fund
Ganbina	General charitable purposes	Beeton Family Fund
Ganbina	General charitable purposes	Williams Fund
Ganbina	Ganbina Scholarship Fund	Thu Giang Nguyen Fund

RECIPIENT	PROJECT	FUND
INDIGENOUS COMMUNITIES		
Ganbina	General charitable purposes	Sunning Hill Fund
Ganbina	Scholarship Program	B B & A Miller Fund
Healesville Indigenous Community Services Association	Outdoor café	Koondee Woonga-gat Toor-rong
Indigenous Crisis Response & Recovery Aboriginal Corporation	Fire Relief for First Nations communities in South Coast NSW	Fire Relief Fund for First Nations Communities
Indigenous Employment Partners	Koondee Woonga-gat Toor-rong - employment of Executive Officer	Towards a Just Society Fund
Indigenous Employment Partners	Administrative support for Koondee Woonga-gat Toor-rong	Towards a Just Society Fund
Indigenous Employment Partners	Administrative Support for Koondee Woonga-gat Toor-rong	Towards a Just Society Fund
Indigenous Employment Partners	Administrative support for Koondee Woonga-gat Toor-rong	Towards a Just Society Fund
Indigenous Literacy Foundation	General charitable purposes	B B & A Miller Fund
Indigenous Literacy Foundation	General charitable purposes	Story Street Fund
Indigenous Literacy Foundation	Community Literacy Program	Johnstone Gumption Fund
Indigenous Literacy Foundation	General charitable purposes	Hart Line Fund
Indigenous Literacy Foundation	General charitable purposes	JRA Support Fund
Indigate	Indigate - Indigenous Reconciliation Leadership program	O'Shea-Thompson Family Fund
Individual recipient	Indigenous learning podcasts	Koondee Woonga-gat Toor-rong Extension Fund
Individual recipient	Climate Change and Australia's First Peoples – a Sovereign Perspective	Koondee Woonga-gat Toor-rong Extension Fund
Individual recipient	Emergency funding for fire relief	Fire Relief Fund for First Nations Communities
Individual recipient	Bushfire relief for emergency goods	Fire Relief Fund for First Nations Communities
Individual recipient	Community Bushfire response projects	Fire Relief Fund for First Nations Communities
Individual recipient	Property repairs caused by bushfires	Fire Relief Fund for First Nations Communities
Individual recipient	Lake Tyers Aboriginal Community - bushfire recovery	Fire Relief Fund for First Nations Communities
Individual recipient	Bushfire relief - relocation & rubbish removal costs & replacement of household items	Fire Relief Fund for First Nations Communities
Individual recipient	Bushfire relief - clean up & repairs to property exterior	Fire Relief Fund for First Nations Communities
Individual recipient	Bushfire property rehabilitation	Fire Relief Fund for First Nations Communities
Individual recipient	Bushfire relief - relocation & medical costs and replacement of vehicles & household items	Fire Relief Fund for First Nations Communities
Individual recipient	Bushfire relief - replacement of caravan and household items	Fire Relief Fund for First Nations Communities
Individual recipient	Refurbishment of bushfire damaged property	Fire Relief Fund for First Nations Communities

RECIPIENT	PROJECT	FUND
INDIGENOUS COMMUNITIES		
Individual recipient	First Nations Bushfire Relief	Fire Relief Fund for First Nations Communities
Karrkad-Kanjdi Trust	Learning on Mimal Country - linking education and culture in Central Arnhem Land	B B & A Miller Fund
Karrkad-Kanjdi Trust	Women's Ranger program	Digger & Shirley Martin Environment Fund
Katungul Aboriginal Corporation Community and Medical Servic	Aboriginal Bushfire Healing Project	Fire Relief Fund for First Nations Communities
Kimberley Foundation Australia Public Donation Fund	Protection of Kimberley rock art	Ballandry (Peter Griffin Family) Fund
Koorie Heritage Trust	General charitable purposes	Johnstone Gumption Fund
Melbourne Indigenous Transition School	Support for Indigenous students scholarship	Fairness Fund
Melbourne Indigenous Transition School	General charitable purposes	Hilary Dixon And John Dempster
Merrimans Local Aboriginal Lands Council	Bushfire relief for the Wallaga Lake Aboriginal community	Fire Relief Fund for First Nations Communities
Moogji Aboriginal Council	Bushfire relief for families in the Cann River Monero / Yuin Aboriginal Community	Fire Relief Fund for First Nations Communities
National Aboriginal Community Controlled Health Organisation	Protective measures for Aboriginal Community Controlled Health Organisations	Fairness Fund ACF National Crisis Response Fund: COVID-19
National Homelessness Collective	COVID-19 Homelessness Crisis Support	Sally Browne Fund O'Shea-Thompson Family Fund
Nature Foundation SA	Engaging the First Peoples of the River Murray and Mallee to help deliver environment water	Rana and Alan Fund
Njernda Aboriginal Corporation	3 Rivers Festival	Koondie Woonga-gat Toor-rong
Nyamba Buru Yawuru	General charitable purposes	Kimberley Youth Fund
Nyoongar Outreach Services	Youth Engagement Program	Tass Nyungar Fund
Original Power	Indigenous Messaging Research Fellowship	Alf & Meg Steel Fund
Original Power	Campaign to Stop mining gas at Leigh Creek (SA)	Worworing Fund
Original Power	General charitable purposes	Anna Rose & Simon Sheikh Family Fund
Original Power	Aboriginal and Torres Strait Islander Messaging Project	Mannifera
PEW Charitable Trusts	Country Needs People Campaign	Clack-McLure Fund ACF Impact Fund Williams Fund Sunning Hill Fund Fairer Futures Fund Melliodora Fund Johnstone Gumption Fund
Rumbalara Aboriginal Co-operative	USA Exchange Scholarship - Educational World Travel	B B & A Miller Fund O'Shea-Thompson Family Fund
Sisters Inside	Indigenous Girls Arts Program	Johnstone Gumption Fund
SNAICC	Family Matters Report	Hart Line Fund Beecher Family Charitable Fund ACF Impact Fund Williams Fund

RECIPIENT	PROJECT	FUND
INDIGENOUS COMMUNITIES		
St Catherine's College	Dandjoo Darbalung - Uni starter kit for indigenous students	Impact 100 WA
Tangentyere Council	Assisting with self-isolation	O'Shea-Thompson Family Fund
Tangentyere Council	COVID-19 Assisting with self-isolation	Clare Murphy Fund
Tangentyere Council	Power Alice Springs Town Camps	Reve Fund
The Smith Family	Research on students leaving The Smith Family Learning For Life scholarship program (LFL)	O'Shea-Thompson Family Fund
The Smith Family	Girls at the Centre Program	DDJE Fund
The Storey Players Theatre	Rainbow Serpent and the Story of Dajarra	Sandcastle Projects
The Storey Players Theatre	Rainbow Serpent and the Story of Dajarra	Sandcastle Projects
The Trustee for The AMA Indigenous Medical Scholarship Found	Medical Scholarship for Indigenous student	B B & A Miller Fund
The Victorian Aboriginal Community Controlled Health Organisa	2019-2020 Bushfire Disaster Appeal	Fire Relief Fund for First Nations Communities
University of New South Wales	Voice,Treaty, Truth: Progressing the Uluru Statement	Clack-McLure Fund ACF Impact Fund Zalewski Fund Silver Gold Fund Alf & Meg Steel Fund Sunning Hill Fund Fairer Futures Fund Wahroonga Fund Johnstone Gumption Fund Keith & Jeannette Ince Fund Mundy-Westall 'Moment-in-Time' Fund Macston Social Endeavour Dorrie Alcock Memorial Fund Fiona Shields Fund Beeton Family Fund Hardman Family Fund O'Shea-Thompson Family Fund
University of New South Wales	Voice,Treaty, Truth: Progressing the Uluru Statement	Raettvisa Fund ACF Impact Fund - Extension (Non Tax Deductible) Tass Nyungar Fund
Victorian Aboriginal Child Care Agency	Growing Up Aboriginal Babies at Home	EM Horton Family Fund
Walbunja Aboriginal Corporation	Indigenous Bushfire Disaster Partnership Fire Relief	Fire Relief Fund for First Nations Communities
Weenthunga Health Network	Occupational Therapy Scholarship Program	Anna Wearne Fund
Weenthunga Health Network	Victorian Aboriginal Health Education (VAHEN) Online Project	B B & A Miller Fund
Weenthunga Health Network	Victorian Aboriginal Health Education (VAHEN) Online Project	Alf & Meg Steel Fund
Why Warriors Org Limited	COVID-19 Education Program East Arnhem Land	ACF Staff Fund
Willum Warrain Aboriginal Association	Community garden, Mornington Peninsula	Koondée Woonga-gat Toor-rong
Winda Mara Aboriginal Corporation	Solar power for cultural centre	Sally Oatley Memorial Fund Sunning Hill Fund Fairer Futures Fund

RECIPIENT	PROJECT	FUND
INDIGENOUS COMMUNITIES		
Winda Mara Aboriginal Corporation	Heywood Running Group	Koondee Woonga-gat Toor-rong
Winda Mara Aboriginal Corporation	Tackling Indigenous Smoking - Research on Complementary Care	Koondee Woonga-gat Toor-rong
Woor-Dungin	Operational expenses (including Executive Officer salary)	Williams Fund
Woor-Dungin	Criminal Records Discrimination Project	B B & A Miller Fund Sunning Hill Fund
Woor-Dungin	Koondee Woonga-gat Toor-rong	Towards a Just Society Fund
Woor-Dungin	Koondee Woonga-gat Toor-rong	Towards a Just Society Fund
Woor-Dungin	Organisational capacity	O'Shea-Thompson Family Fund
Woor-Dungin	Koondee Woonga-gat Toor-rong	Towards a Just Society Fund
Woor-Dungin	Management and organisational change	Beeton Family Fund
Woor-Dungin	General charitable purposes	Beeton Family Fund
Woor-Dungin	General charitable purposes	Fairer Futures Fund
Woor-Dungin	General charitable purposes	Raettvisa Fund
Woor-Dungin	Walk with Woor-Dungin Campaign	Beecher Family Charitable Fund
Woor-Dungin	General charitable purposes	Fairer Futures Fund
Wungening Aboriginal Corporation	COVID-19 Food Appeal for Vulnerable Aboriginal people in Perth and SW WA	ACF National Crisis Response Fund: COVID-19
Wuthathi Aboriginal Corporation	Office equipment purchase	B B & A Miller Fund
Wuthathi Aboriginal Corporation	Jobs on Country Operating Support	B B & A Miller Fund
Yalari	Educational Scholarship	RO Fund

RECIPIENT	PROJECT	FUND
ENVIRONMENT, CONSERVATION & CLIMATE CHANGE *		
Abbotsford Convent Foundation	Sapling School	Hamer Family Fund
Alternative Technology Association (Renew Australia)	Climate Resilient Homes	Hart Line Fund ACF Impact Fund Williams Fund Alf & Meg Steel Fund Fairer Futures Fund
Alternative Technology Association (Renew Australia)	Climate Resilient Homes	Raettvisa Fund
Altona Community Gardens	Closing the Loop - Food waste to garden gold	Hobsons Bay Community Fund (Extension)
Altona Meadows Community Centre	Set up of dry goods store Food Bank for Community Centre	Hobsons Bay Community Fund (Extension)
Australian Animal Protection Society	General charitable purposes	One Tomorrow Charitable Fund
Australian Animal Protection Society	General charitable purposes	One Tomorrow Charitable Fund
Australian Conservation Foundation	General charitable purposes	One Tomorrow Charitable Fund
Australian Conservation Foundation	General charitable purposes	One Tomorrow Charitable Fund
Australian Environmental Grantmakers Network	General charitable purposes	Koshland Innovation Extension Fund
Australian Environmental Grantmakers Network	General charitable purposes	Fairer Futures Fund
Australian Environmental Grantmakers Network	General charitable purposes	Keith & Jeannette Ince Fund
Australian Marine Conservation Society	Saving the reef by choosing coral over coal	ACF Impact Fund Dominic & Anne Gallace Family Fund
Australian Marine Conservation Society	Saving the Reef - UNESCO World Heritage and Climate Campaign 2019 - 2020	B B & A Miller Fund Fairer Futures Fund
Australian Marine Conservation Society	World Heritage Committee & the Great Barrier Reef	Digger & Shirley Martin Environment Fund
Australian Marine Conservation Society	General charitable purposes	The Caroline Durré Sub Fund
Australian National University	The Great Forest National Park	The Oak Tree Fund
Australian Red Cross	Red Cross Disaster Relief and Recovery Fund	Geostudies Fund
Australian Red Cross	Red Cross Disaster Relief and Recovery Fund	Unico Community Fund
Australian Red Cross	Red Cross Disaster Relief and Recovery Fund	Slater & Gordon Community Fund
Australian Red Cross Society	General charitable purposes	O'Shea-Thompson Family Fund
Australian Red Cross Society	Disaster Relief and Recovery Fund	Dominic & Anne Gallace Family Fund
Australian Red Cross Society	Disaster Relief and Recovery Fund	Unico Community Fund
Australian Red Cross Society	General charitable purposes	The Bradley-Weightman Charitable Fund
Australian Trust For Conservation Volunteers	General charitable purposes	Tasmanian Walking Company Fund
Australian Wildlife Conservancy	General charitable purposes	Sunning Hill Fund
Australian Wildlife Conservancy	General charitable purposes	The Caroline Durré Sub Fund

* Includes emergency response

RECIPIENT	PROJECT	FUND
ENVIRONMENT, CONSERVATION & CLIMATE CHANGE *		
Australian Wildlife Conservancy	General charitable purposes	Halstead Freshi
Australian Wildlife Conservancy	Urgent action to save the Kangaroo Island Dunnart campaign	Keith & Jeannette Ince Fund
Australian Wildlife Conservancy	Environment research	Ballandry (Peter Griffin Family) Fund
Australian Wildlife Conservancy	General charitable purposes	Sunning Hill Fund
Australian Wildlife Conservancy	General charitable purposes	Davie Family Fund
Australian Youth Climate Coalition Gift Fund	SEED Indigenous Youth Climate Network - Campaign against Origin Energy Fracking in NT	B B & A Miller Fund
Australian Youth Climate Coalition Gift Fund	Seed: Building the power of Aboriginal communities to protect country and stop fracking	GROUNDSWELL
Australian Youth Climate Coalition Gift Fund	Seed Indigenous Youth Climate Network	Scarlet's Fund
Beyond Zero Emissions	Hunter Valley Transition project	Hamer Family Fund
BirdLife Australia	Kangaroo Island Recovery Project	Alf & Meg Steel Fund Melliodora Fund Worworing Fund
BirdLife Australia	Migratory Shorebirds program	Curlew Fund
BlazeAid	Bushfire response	NSW Chinese Community Emergency Response Fund
BlazeAid	General charitable purposes	One Tomorrow Charitable Fund
Blue Whale Study	General charitable purposes	The Caroline Durré Sub Fund
Bob Brown Foundation	Participation at the World Wilderness Congress in Jaipur, India in March 2020	Melliodora Fund
Bob Brown Foundation	Environmental Protection and Biodiversity Conservation (EPBC) Act Review	Wahroonga Fund
Bush Heritage Australia	Nardoo Hills management	Geostudies Fund
Bush Heritage Australia	General charitable purposes	The Caroline Durré Sub Fund
Central Victorian Biolinks Alliance	Strathbogies Glideways Program	The TAP Fund
Central Victorian Biolinks Alliance	General charitable purposes	Alf & Meg Steel Fund
Central Victorian Biolinks Alliance	Spring Plains Watershed Repair Phase 1	Worworing Fund Alf & Meg Steel Fund
Centre for Policy Development	Sustainable Economy Program	Curlew Fund Digger & Shirley Martin Environment Fund
Change Agency	Community Organising Fellowship	Melliodora Fund
Change Agency	Community Organising Fellowship	Fairer Futures Fund
Climate Council	Winning the National Energy Debate	Williams Fund
Climate Council	General charitable purposes	Koshland Innovation Extension Fund
Climate Council	General charitable purposes	O'Shea-Thompson Family Fund
Climate Council	Climate Media Centre core funding	GROUNDSWELL
Country Fire Authority	Community Fire Authorities in Main Ridge, Boneo and Rye	Dominic & Anne Gallace Family Fund
Country Fire Authority	Anglesea Brigade	Heartwood

RECIPIENT	PROJECT	FUND
ENVIRONMENT, CONSERVATION & CLIMATE CHANGE *		
Country Fire Authority	Plenty Fire Brigade	Wanless Family Fund
Country Fire Service Foundation	CFS volunteer firefighters on Kangaroo Island	Mundy-Westall 'Moment-in-Time' Fund
Edgar's Mission	General charitable purposes	Positive Ideas Group
Environment Victoria	General charitable purposes	Koshland Innovation Extension Fund
Environment Victoria	Latrobe Valley Transition project	Hamer Family Fund
Environment Victoria	Three Major Threats Campaign	Melliodora Fund
Environment Victoria	General charitable purposes	The Caroline Durré Sub Fund
Environment Victoria	Feb 2020 Climate Action Appeal	Running Waters Fund
Environmental Defenders Office	General charitable purposes	Keith & Jeannette Ince Fund
Environmental Defenders Office	Towards the Amalgamation of a National EDO Australia	EM Horton Family Fund
Environmental Defenders Office	EDO loss of funding	Keith & Jeannette Ince Fund
Environmental Justice Australia	General charitable purposes	Vilde Family Fund
Environmental Justice Australia	General charitable purposes	The Caroline Durré Sub Fund
Environmental Justice Australia	General charitable purposes	Vilde Family Fund
Farmers for Climate Action	Farmers for Climate Action workshops in Queensland	Windarra Fund
Farmers for Climate Action	Campaign for a National Strategy on Agriculture & Climate Change	Williams Fund Fairer Futures Fund Fairer Futures Fund ACF Impact Fund Hart Line Fund
Farmers for Climate Action	Farmers for Climate Action	Anna Rose & Simon Sheikh Family Fund
Foundation for National Parks and Wildlife	Backyard Buddies	Keith & Jeannette Ince Fund
Foundation For Rural and Regional Renewal	Strengthening Rural Communities Program	Holding Redlich Social Justice Fund
Foundation For Rural and Regional Renewal	FRRR Disaster Resilience and Recovery Fund	The Ripple Fund
Foundation For Rural and Regional Renewal	FRRR Disaster Resilience and Recovery Fund	One Tomorrow Charitable Fund
Friends of Leadbeater's Possum	Leadbeaters Possums court case	The Oak Tree Fund
Friends of the Earth Melbourne	Sustainable Cities Campaign	Running Waters Fund
Friends of the Helmeted Honeyeater	'From Yellingbo to Butterfield' Project Officer	Quercus Fund
Gippsland Emergency Relief Fund	Bushfire Relief and Recovery Grants	Wanless Family Fund
Homeward Bound Projects	2020 Homeward Bound program	Homeward Bound Projects Fund
Hornsby RFS Emergency Public Fund	Hornsby Rural Fire Brigade	NSW Chinese Community Emergency Response Fund

RECIPIENT	PROJECT	FUND
ENVIRONMENT, CONSERVATION & CLIMATE CHANGE *		
Invasive Species Council	Protecting Australian Species Against Extinction	Ballandry (Peter Griffin Family) Fund Curlew Fund ACF Impact Fund The Ngaruk Fund Fairer Futures Fund Melliodora Fund Vilde Family Fund The Ripple Fund Macston Social Endeavour Hardman Family Fund O'Shea-Thompson Family Fund NG Family Fund
Invasive Species Council	General charitable purposes	Curlew Fund
Island Care	Bushfire Relief	The Ripple Fund
Jane Goodall Institute Australia	Roots & Shoots Western Australia Tree Planting, Species Recovery and Environmental Education Project	Demeter Legacy Fund
JCCV Cultural Fund	Victorian Jewish Bushfire Relief Appeal	Omi-Albers Fund
Lort Smith Animal Hospital	Pets in Need	Keith & Jeannette Ince Fund
Market Forces	General charitable purposes	Vilde Family Fund
Market Forces	General charitable purposes	Fairer Futures Fund
Market Forces	General charitable purposes	Running Waters Fund
Monash University	UK Conservative Environment Network Delegation - ClimateWorks	Keith & Jeannette Ince Fund
National Association of Charitable Recycling Organisations	Carbon Impacts of Reuse	Alf & Meg Steel Fund
National Parks Association of NSW	Campaign to oppose the Snowy 2.0 project	Worworing Fund
Nature Foundation SA	Water for Nature program	Melliodora Fund
Nature Foundation SA	Kangaroo Island Feral Cat Eradication Project	Worworing Fund
Nature Foundation SA	Wildlife Recovery Fund: Fire Recovery Kangaroo Island	The Ripple Fund
NSW Wildlife Information Rescue And Education Service	General charitable purposes	Unico Community Fund
NSW Wildlife Information Rescue And Education Service	Support for bushfire response	One Tomorrow Charitable Fund
NSW Wildlife Information Rescue and Education Service	General charitable purposes	Halstead Freshi
NSW Wildlife Information Rescue And Education Service	WIRES Bushfire Appeal	Vilde Family Fund
NSW Wildlife Information Rescue And Education Service	WIRES Bushfire Appeal	Jax Acacia Fund
NSW Wildlife Information Rescue And Education Service	WIRES Bushfire Appeal	Scarlet's Fund
NSW Wildlife Information Rescue And Education Service	WIRES Bushfire Appeal	Keith & Jeannette Ince Fund Unico Community Fund
Parks Victoria	General charitable purposes	Koshland Innovation Extension Fund
Pets in the Park	Perth Pets in the Park Clinics initiative	Demeter Legacy Fund

RECIPIENT	PROJECT	FUND
ENVIRONMENT, CONSERVATION & CLIMATE CHANGE *		
Port Stephens Koala & Wildlife Preservation Society	Bushfire response	NSW Chinese Community Bushfire Appeal
Purves Environmental Fund	Stop Excessive Tree-clearing campaign in QLD	EM Horton Family Fund
Purves Environmental Fund	Deforestation-Free Alliance campaign - Phase 3	Keith & Jeannette Ince Fund
Royal Botanic Gardens Melbourne	Directors Circle renewal	Sally Browne Fund
Royal Botanic Gardens Melbourne	Victorian Conservation Seedbank	The Caroline Durré Sub Fund
Royal Botanic Gardens Melbourne	General charitable purposes	Ballandry (Peter Griffin Family) Fund
RSPCA South Australia	RSPCA Bushfire Appeal	The Bradley-Weightman Charitable Fund
Rural Aid	General charitable purposes	One Tomorrow Charitable Fund
Rural Aid	Bushfire relief to property and General charitable purposes	One Tomorrow Charitable Fund
Rural Aid	General charitable purposes	One Tomorrow Charitable Fund
Rural Aid	General charitable purposes	Wanless Family Fund
Salvation Army Southern Territory Social Work	2019 NSW/QLD bushfire relief	Dominic & Anne Gallace Family Fund
Salvation Army Southern Territory Social Work	NSW/QLD Fire Appeal	One Tomorrow Charitable Fund
Salvation Army Southern Territory Social Work	Salvation Army Bushfire Appeal	Keith & Jeannette Ince Fund Unico Community Fund One Tomorrow Charitable Fund
Ship4Good	Galley4Good	Hobsons Bay Community Fund (Extension)
St Vincent De Paul Society (SA)	Vinnies SA Bushfire Appeal	The Bradley-Weightman Charitable Fund
The Colong Foundation for Wilderness	Warragamba (GIVE A DAM) Campaign	Worworing Fund
The Conservation Ecology Trust	Intern Program	Keith & Jeannette Ince Fund
The Environment Centre NT Public Fund	Sustainable Development in NT	Melliodora Fund
The Green Institute	Women's Environmental Leadership Australia program	Melliodora Fund
The Lost Dogs Home	General charitable purposes	Sunning Hill Fund
The Lost Dogs Home	General charitable purposes	Henkell Family Fund 2
The Lost Dogs Home	General charitable purposes	Sunning Hill Fund
The New Joneses	General charitable purposes	Hamer Family Fund
The Next Economy	General charitable purposes	Windarra Fund Anna Rose & Simon Sheikh Family Fund
The Next Economy	General charitable purposes	Clive St
The Tree Project	General charitable purposes	Positive Ideas Group
The Wilderness Society	General charitable purposes	JRA Support Fund
Thin Green Line Foundation	International Rangers Congress in Nepal	Global Leadership Fund
Totally Renewable Yackandandah	Totally Renewable Yackandandah - Solar bulk buy rollout	Worworing Fund
Totally Renewable Yackandandah	Community-Scale Solar & Battery Installation	EM Horton Family Fund

RECIPIENT	PROJECT	FUND
ENVIRONMENT, CONSERVATION & CLIMATE CHANGE *		
Totally Renewable Yackandandah	Community Energy Hubs	EM Horton Family Fund
Trust For Nature	Snape Reserve, Harbury Reserve and Pallister's Reserve	Koshland Innovation Extension Fund
Trust For Nature	Care for Country - joint learning	Hamer Family Fund
Trust For Nature (Victoria)	General charitable purposes	Ballandry (Peter Griffin Family) Fund
Victorian National Parks Association	General charitable purposes	Koshland Innovation Extension Fund
Victorian National Parks Association	General charitable purposes	Ros & Elsie Garnet Memorial Fund
Victorian National Parks Association	Bringing Nature to You project	Fairer Futures Fund
Victorian National Parks Association	General charitable purposes	The Caroline Durré Sub Fund
Wan Smolbag	Environment and Youth programs in Vanuatu	Positive Ideas Group
Wentworth Group of Concerned Scientists	General charitable purposes	Melliodora Fund
Wettenhall Environment Trust	General charitable purposes	Williams Fund
Wildcare	Bonorong Wildlife Sanctuary	Tasmanian Walking Company Fund
Wildlife Conservation International	General charitable purposes and The Orangutan Project	Positive Ideas Group
Wildlife of the Central Highlands	General charitable purposes	The Oak Tree Fund
WildLife Victoria	Wildlife Shelters	Tasmanian Walking Company Fund
Wildlife Victoria	Wildlife Victoria Bushfire Appeal	Vilde Family Fund
Wildlife Victoria	Wildlife Victoria Bushfire Appeal	Jax Acacia Fund
Wildlife Victoria	Wildlife Victoria Bushfire Appeal	Dennoch Fund
Wildlife Victoria	Wildlife Victoria Bushfire Appeal	Rana and Alan Fund
Wildlife Victoria	Wildlife Victoria Bushfire Appeal	Keith & Jeannette Ince Fund Unico Community Fund One Tomorrow Charitable Fund
Wildlife Victoria	Wildlife Victoria Bushfire Appeal	Abercrombys Charitable Fund Positive Ideas Group
World Wide Fund For Nature Australia	General charitable purposes	Sunning Hill Fund
Youth Food Movement Australia	Salvage Supperclub	Hamer Family Fund
Zoos Victoria	Fighting Extinction proram	Geostudies Fund

RECIPIENT	PROJECT	FUND
ARTS & CULTURE		
3MBS-FM Development Fund	3MBS Chairman's Circle	Henkell Family Fund Henkell Family Fund 2
3MBS-FM Development Fund	General charitable purposes	Ballandry (Peter Griffin Family) Fund
45 Downstairs	General charitable purposes	Hart Line Fund
Abbotsford Convent Foundation	Sustain the Convent campaign	MOGGS
Abbotsford Convent Foundation	General charitable purposes	Ballandry (Peter Griffin Family) Fund
Anna Blainey	Support for the work of Anna Blainey	Trikojus Education Fund
Arapiles Community Theatre	Styckx Theatre Community Workshop Program	Clack-McLure Fund
Ars Musica Australis	General charitable purposes	Benjamin Fund
Arts Centre Melbourne	General charitable purposes	Henkell Family Fund 2
Astra Chamber Music Society	General charitable purposes	Koshland Innovation Extension Fund
Australian Book Review.	General charitable purposes	JRA Support Fund
Australian Chamber Orchestra	Music education purposes	Ballandry (Peter Griffin Family) Fund
Australian Film Television and Radio School (AFTRS)	Kenneth Myer Fellowship	Kenneth Myer Fellowship
Australian International Opera Awards Public Fund	Australian International Opera Awards	Henkell Family Fund 2
Australian National Academy of Music	General charitable purposes	Benjamin Fund
Australian National Academy of Music	Song Cycles with Sara McIver	Henkell Family Fund 2
Australian National Academy of Music	General charitable purposes	Sunning Hill Fund
Australian Youth Orchestra Appeal	Australian Youth Orchestra scholarships	Hamer Family Fund
Australian Youth Orchestra Appeal Trust Fund	General charitable purposes	Henkell Family Fund 2
Bell Shakespeare Company	Schools Program, Katherine, NT	Trikojus Education Fund
Co Opera	Support for touring opera Tosca	Henkell Family Fund 2
Co Opera	Co-Opera Tour of TOSCA	Henkell Family Fund 2
Creative Partnerships Australia	Production of book 'Kristian Fredrikson: Designer'	Kristian Fredrikson Scholarship
Flinders Quartet	General charitable purposes	Benjamin Fund
fortyfivedownstairs	General charitable purposes	Ballandry (Peter Griffin Family) Fund
fortyfivedownstairs	The Year of Magical Thinking	Ballandry (Peter Griffin Family) Fund
Glossop High School	Joy Mavis Schwartz-Seidler Musical Scholarships	Joy Mavis Schwartz-Seidler Musical Scholarship
Heide Park and Art Gallery	New garden project	Benjamin Fund
Individual recipient	Ongoing development as an opera singer	Sylvia Fisher Fund
Individual recipient	Ongoing development as an opera singer	Sylvia Fisher Fund
Individual recipient	Ongoing development as an opera singer	Sylvia Fisher Fund
Individual recipient	Ongoing development as an opera singer	Sylvia Fisher Fund
Individual recipient	Ongoing development as an opera singer	Sylvia Fisher Fund

RECIPIENT	PROJECT	FUND
ARTS & CULTURE		
Jam Factory Contemporary Craft & Design	General charitable purposes	Carreker Community Fund
McClelland Gallery and Sculpture Park	Exhibition Haus Werk	Henkell Family Fund 2
McClelland Gallery and Sculpture Park	General charitable purposes	Ballandry (Peter Griffin Family) Fund
Melba Opera Fund	General charitable purposes	Ballandry (Peter Griffin Family) Fund
Melba Opera Fund	General charitable purposes	Henkell Family Fund 2
Melbourne Bach Choir	Verdi Requiem in September 2019	Henkell Family Fund 2
Melbourne Chamber Orchestra	Concert and regional touring program	Hamer Family Fund
Melbourne Chamber Orchestra Donation Fund	Daylesford Festival	Fairness Fund
Melbourne Fringe Fund	General charitable purposes	Sally Browne Fund
Melbourne Fringe Fund	General charitable purposes	MOGGS
Melbourne Recital Centre	Great Performers Series	Benjamin Fund
Melbourne Recital Centre Public Fund	General charitable purposes	Henkell Family Fund 2
Melbourne Recital Centre Public Fund	Artist Assembly	Benjamin Fund
Melbourne Recital Centre Public Fund	General charitable purposes	Ballandry (Peter Griffin Family) Fund
Melbourne Theatre Company	Education Program	Hart Line Fund
Melbourne Theatre Company	General charitable purposes	Ballandry (Peter Griffin Family) Fund
More Than Opera	GAOG (German-Australian Opera Grant)	Henkell Family Fund 2
More Than Opera	German-Australian Opera Grant	Henkell Family Fund 2
More Than Opera	German-Australian Opera Grant	Henkell Family Fund 2
More Than Opera	German-Australian Opera Grant	Henkell Family Fund 2
More Than Opera	German-Australian Opera Grant	Henkell Family Fund 2
More Than Opera	General charitable purposes	Henkell Family Fund 2
More Than Opera	German-Australian Opera Grant	Henkell Family Fund 2
Music & Opera Singers Trust	Freelance Artist Relief Australia	Henkell Family Fund 2
Musica Viva	Music in Schools project	Hamer Family Fund
Musica Viva Development Fund	Support for educational programs	Ballandry (Peter Griffin Family) Fund
National Trust Of Australia (Victoria)	Como Fashion House	Sally Browne Fund
Opera Australia	Patrons Program OA	Henkell Family Fund 2
Opera Australia	Opera Australia Capital Fund	Henkell Family Fund 2
Opera Australia	General charitable purposes	Benjamin Fund
Opera Australia	2020 Ring Cycle production	Henkell Family Fund 2
Opera Australia	General charitable purposes	Ballandry (Peter Griffin Family) Fund
Opera Australia	Support for the production of Lohengrin	Henkell Family Fund 2

RECIPIENT	PROJECT	FUND
ARTS & CULTURE		
Opera Foundation for Young Australians	Deutsche Oper Berlin Award	Henkell Family Fund 2
Orchestra Victoria	Concert and regional touring	Hamer Family Fund
Outer Urban Projects	Associate Artists Residency Program	Clack-McLure Fund
Peninsula Summer Music Festival Public Fund	In support of opera singer component of the Festival	Henkell Family Fund 2
Queensland Theatre Company	Education and Youth Studio Upgrade (Diane Cilento Studio)	Keith & Jeannette Ince Fund
Queensland Theatre Company	General charitable purposes	Davie Family Fund
Royal Melbourne Philharmonic Society	Royal Melbourne Philharmonic Aria	Henkell Family Fund 2
Ruscare	General charitable purposes	Trikojus Education Fund
Saint Marks Fitzroy	St Marks Music Development	St Mark's Anglican Church Fitzroy Choral Scholarship Fund
St Peter's Eastern Hill Melbourne Charitable Foundation	General charitable purposes	Ballandry (Peter Griffin Family) Fund
State Orchestra of Victoria	General charitable purposes	Henkell Family Fund 2
State Orchestra of Victoria	Musical Chairs' Program: Funding for Principal flute	Ballandry (Peter Griffin Family) Fund
Stella Prize Public Fund	Stella Forever Fund	Koshland Innovation Extension Fund
Support Act	COVID-19 Emergency Appeal	Mundy-Westall 'Moment-in-Time' Fund
Support Act	Australian Music Industry COVID-19 Relief Fund	Sally Browne Fund
The Australian Ballet	The Kristian Fredrikson Book by Dr Michelle Potter	Kristian Fredrikson Scholarship
The Boite	Women Empowered Through Tapestry (2nd year instalment)	Dennoch Fund
The Lieder Society of Victoria	The Liederfest and Recital Series	Henkell Family Fund 2
The Melbourne Opera Company	Training programme for young Australian singers	Sylvia Fisher Fund
The Melbourne Opera Company	Opera production - Norma	Henkell Family Fund 2
The Melbourne Opera Company	Opera - Jonny Strikes Up	Henkell Family Fund 2
The Melbourne Opera Company	Opera production - Norma	Henkell Family Fund 2
The Melbourne Opera Company	Production of Beethoven's opera Fidelio in Feb 2020	Henkell Family Fund 2
The Melbourne Opera Company Limited	General charitable purposes	Ballandry (Peter Griffin Family) Fund
The Melbourne Opera Company Limited	Richard Divall Emerging Artist Programme	Sylvia Fisher Fund
The Opera Studio Melbourne	Yarra Valley Festival	Henkell Family Fund 2
The Opera Studio Melbourne	2020 Scholarships	Henkell Family Fund 2
The Richard Wagner Society Special Productions Fund	General charitable purposes	Henkell Family Fund 2
The Trustee For The Council For Jewish Education In Schools	United Jewish Education Board	Kaplan Dascalu Fund
Trustee for Opera Scholars Australia Trust	General charitable purposes	Henkell Family Fund 2
University of Melbourne	Production of 30 years after the fall of the Berlin Wall	Henkell Family Fund 2

RECIPIENT	PROJECT	FUND
ARTS & CULTURE		
Victorian Opera Company	General charitable purposes	Ballandry (Peter Griffin Family) Fund
Victorian Opera Company	Opera Salome	Henkell Family Fund 2
Writers Victoria	Hazel Rowley Literary Prize	Hazel Rowley Literary Fund
Writers Victoria	Hazel Rowley Literary Prize	Hazel Rowley Literary Fund

RECIPIENT	PROJECT	FUND
INTERNATIONAL AID & DEVELOPMENT		
Alola Foundation	Maternal and Child Health Project	Dorrie Alcock Memorial Fund
Australia For UNHCR	General charitable purposes	O'Shea-Thompson Family Fund
Australia For UNHCR	Winter Assistance Plan	Story Street Fund
Australia For UNHCR	General charitable purposes	The Bradley-Weightman Charitable Fund
Australian Marist Solidarity	Child and Youth Centre - Ponta Leste, Timor-Leste	Dorrie Alcock Memorial Fund
Australian Rotary Foundation Trust	District 9800 Polio Plus Vaccination program	Tan Family Fund
Barbara May Foundation	General charitable purposes	Story Street Fund
Blue Dragon Children's Foundation International	General charitable purposes	One Tomorrow Charitable Fund
Blue Dragon Children's Foundation International	Merri Marathon Walk Fundraiser	Beecher Family Charitable Fund
Blue Dragon Children's Foundation International	Emergency Care for Children impacted by COVID-19	One Tomorrow Charitable Fund Juno Fund Clive St
Diplomacy Training Program Limited	General charitable purposes	Hart Line Fund
Donations in Kind	Recycled school furniture to East Timor schools	Spend It Well Fund
East Timor Hearts Fund	General charitable purposes	Parsons and Nathan Gumnut
Fred Hollows Foundation	General charitable purposes	JRA Support Fund
Fred Hollows Foundation	General charitable purposes	The Caroline Durré Sub Fund
Human and Hope Association	Hiring a new English teacher	Espero Fund
Inclusive Development International	General charitable purposes	Alf & Meg Steel Fund
International Christian Aid Relief Enterprises (ICARE)	General charitable purposes	The Bradley-Weightman Charitable Fund
International Women's Development Agency	Voice for Change video	The Caroline Durré Sub Fund
International Women's Development Agency	General charitable purposes	The Caroline Durré Sub Fund
International Women's Development Agency	General charitable purposes	Fairer Futures Fund
Love Mercy Foundation	Kristina Health Clinic	Holding Redlich Social Justice Fund
Love Mercy Foundation	Kristina Health Centre	Holding Redlich Social Justice Fund
Marie Stopes International Australia	The Blue Door Campaign	Clare Murphy Fund

RECIPIENT	PROJECT	FUND
INTERNATIONAL AID & DEVELOPMENT		
Medecins Sans Frontieres Australia	General charitable purposes	O'Shea-Thompson Family Fund
Medecins Sans Frontieres Australia	COVID-19 support	Juno Fund
Medecins Sans Frontieres Australia	General charitable purposes	JRA Support Fund
Mercy Ships Australia	Keith Quek Baking For Charities campaign	One Tomorrow Charitable Fund
M'Lop Tapang Organization	Drugs and Harm Reduction Program	Dorrie Alcock Memorial Fund
Save the Children Australia	General charitable purposes	Benjamin Fund
Save the Children Australia	Accelerated Sign Language project in Cambodia	Dorrie Alcock Memorial Fund
Singing Kites	General charitable purposes	Davie Family Fund
The East West Foundation of Australia	Uluru Children's Home	Parsons and Nathan Gumnut
THREE for All Foundation	Philippines Project	O'Shea-Thompson Family Fund
THREE for All Foundation Limited	General charitable purposes	Assia Altman Fund
Trustees of Marist Fathers for the province of Australia	Educational Development of Myanmar Children in Ranong,Thailand	Greg Larsen Family Fund
UNICEF Australia	General charitable purposes	O'Shea-Thompson Family Fund
UNICEF Australia	General charitable purposes	Dorrie Alcock Memorial Fund
UNICEF Australia	Programs in the Middle East	Story Street Fund
World Vision Australia	Timor-Leste Better Food Better Health Project	Clare Murphy Fund
World Vision Australia	General charitable purposes	Benjamin Fund
World Vision Australia	Child sponsorships	Asgard Charitable Giving Fund

FUNDS 19/20

FUND	FOCUS OF FUND
A Peace of the Pie	Supporting the arts, health and medical research, the environment and conservation.
Abbotsford Convent Fund	Supporting the Abbotsford Convent Foundation to operate Australia's largest multi-arts precinct.
Abercromby's Charitable Fund	Focusing on community services and support, health and medical research.
ACF Impact Fund (Main & Extension)	Established as our flagship fund for collective giving, the Impact Fund seeks to shift the dial on issues of national concern.
ACF National Crisis Response Fund (Main & Extension)	Providing flexible resources to organisations working with communities who are impacted by disasters or emergencies.
ACF Staff Fund	Supporting some of the smaller projects that cross our desk that may otherwise struggle to attract funding.
Agnes Robertson Fund	Supporting aged care, medical research, the arts and education.
Alf and Meg Steel Fund	Supporting health and medical-related causes, children, gardening, the environment and Indigenous Australians.
Alice Sloan Fund	Supporting young people to participate in varied pursuits, including sport, dance, music, art and outdoor education.
Alison Patrick Memorial Fund	Supporting graduate historical research in the broad area of French revolutionary history and also projects which focus on environmental issues.
Allaway Lancashire Fund	Supporting social justice, ethical and environmental education and protection of cultural and natural heritage.
AMCS Charitable Fund (Main & Extension)	Generable charitable purposes to assist in providing care for seniors living independently, especially among multicultural communities.
AMCS Millennium House Redevelopment	Supporting the redevelopment of community centre Millennium House for the long-term benefit of culturally and linguistically diverse communities.
Amicus Curiae Fidelis	Supporting the goals of organisations in Western Australia that reflect the United Nations Declaration of Human Rights and Conventions.
Amos Family Account	General charitable purposes.
Anna Rose and Simon Sheikh Family Fund	Supporting the people-powered movement tackling climate change and advancing climate justice in Australia.
Anna Wearne Fund	Creating opportunities for young people to reach their potential, where such potential is hampered due to disadvantage.
Anne Elder Poetry Fund	Continuing an established poetry award for a poet's first published book-length collection of poetry.
Antoinette and John Richardson Memorial Fund	Supporting specific organisations, including Swinburne University, Victorian College of the Arts and St Francis Choir.
Apollo Fund	Supporting education and research into profound hearing loss.
Ardoch Future Fund	Making education a reality for young people, including those experiencing homelessness and disadvantage.
Asgard Charitable Giving Fund	Charitable causes and overseas aid.
Ashworth Family Fund	Supporting medical research.
Assia Altman Fund	Focusing on LGBTQIA+ organisations and projects, asylum seekers and refugees, animal rights and social entrepreneurship.

FUND	FOCUS OF FUND
Australian Children's Education Fund	Supporting education.
Australian Disability and Indigenous Peoples' Education Fund	Supporting opportunities for lifelong learning for people with disabilities from Indigenous and Indigenous backgrounds.
Australian Indigenous Persons' Initiatives Fund	Supporting Indigenous issues.
Australian Learning Lecture	Supporting the Australian Learning Lecture – a prestigious biennial lecture which brings big ideas in education to public attention for national discussion.
Avalon Circle	Supporting the Avalon Centre to help people experiencing homelessness, mental illness or disability, the elderly and anyone requiring support.
Baird Family Fund	Supporting organisations to help meet the needs of the intellectually disabled and their families.
Baker Watson Fund	Supporting specific organisations, including Sane Australia, Guide Dogs and homelessness.
Balandry (Peter Griffin Family) Fund	General charitable purposes.
Barry Prior Humanitarian Fund	General charitable purposes.
BB and A Miller Fund	Supporting Indigenous education and health, disability, environment, medical research, mental health and youth suicide, and humanitarian crises.
Beecher Family Charitable Fund	General charitable purposes.
Beeton Family Fund	General charitable purposes.
Bell Family Fund	Supporting social justice, animal welfare and medical research.
Benjamin Fund	General charitable purposes.
Berry Fund	General charitable purposes.
Better Tomorrow Fund	Supporting education opportunities for women.
Beyond Me	Supporting young people to make a difference for others in the community.
BFG Charitable Account	General charitable purposes, including the advancement of disadvantaged individuals and communities.
Blackfish	Supporting biodiversity, wildlife and climate resilience, in particular on-ground work and advocacy for the rights of nature.
Bridging Opportunities	General charitable purposes, with a particular passion for projects that work with, support and empower asylum seekers, refugees and women.
Brockman-Munn Fund	General charitable purposes.
Carreker Community Fund	General charitable purposes.
Cassanga Fund (Main & Extension)	Honouring our daughter's legacy and supporting women in adventure sports.
Charles D'Aprano Award Fund	Providing funding for a bi-annual scholarship to a student who wishes to extend and further their Italian-related studies in Italy.
Charles David Fund	Supporting social equity and holocaust studies.
Chaskett Fund	Supporting rare book purchases for Melbourne libraries, especially the State Library of Victoria, and providing support for bibliographical scholarship.
Cherie Millar Education Fund	General charitable purposes.
Children First Future Miracles Fund	Supporting the work of the Children First Foundation to help facilitate life-changing surgery in Australia for disadvantaged children from developing countries.
Clack-McLure Fund	General charitable purposes with a focus on innovative programs in media and the arts.
Clare Murphy Fund	Empowering women and children in SE Asia and South Pacific, international emergency relief, and refugee support.
Clarence Community Fund	General charitable purposes, with a particular focus on the health and wellbeing of people in the City of Clarence, Tasmania.

FUND	FOCUS OF FUND
Clay Gardner Charitable Fund	General charitable purposes.
Clemenger Staff Fund	Each state office has a different focus for grantmaking, from young people at risk to literacy and capacity development.
Clive St	General charitable purposes.
Connie and Craig Kimberley Fund	General charitable purposes.
Counterpart	Promoting, advocating for and supporting women's health in Victoria.
Curlw Fund	Supporting conservation issues, particularly those intersecting with Indigenous issues.
Dahkota Fund	General charitable purposes.
David Boykett Tall Ships Voyaging Fund	Developing life and leadership skills for Australian youth through the experience of voyages on tall ships.
David Jolley Leadership Award	Acknowledging and promoting excellence and leadership in human services with a focus on tertiary social work education.
Davie Family Fund	Supporting arts and culture, education, training and employment, disability, environment and conservation.
DDJE Fund	General charitable purpose with a specific interest in education.
Demeter Legacy Fund	Providing grants for care, across three philanthropic themes: dogs; conservation; and community.
Dennoch Fund	Empowering communities by supporting social enterprises, bridging potential divides, and encouraging the development of skills in the arts.
Diabetes Victoria Fund	Supporting the work of Diabetes Victoria through its programs, services and research.
Digger and Shirley Martin Environment Fund	Supporting the environment and conservation.
Dina Grollo Community Fund	Supporting youth education, employment and homelessness in the areas in which Grocon works.
DISCAL Fund	Supporting community advocacy and people experiencing disability.
Dominic and Anne Gallace Family Fund	General charitable purposes.
Dominic Gianni Fund	Supporting children experiencing disability.
Dominica Whelan Endowment	General charitable purposes.
Dorrie Alcock Memorial Fund	Supporting the welfare and education of young children.
Durrabool Fund	General charitable purposes.
Eastern Health Charitable Fund	General charitable purposes with particular emphasis on the alcohol and drug sector.
EastWeb Fund (Main & Extension)	Combating disadvantage and building community capacity amongst Victoria's Indigenous, asylum seeker and refugee communities.
Education Support Fund	Supporting refugee children or children experiencing other disadvantage through tertiary education.
EM Horton Family Fund	Focusing on social justice and sustainability of the environment through advocacy and community development.
Enviro Warriors	Supporting environmental projects, particularly those focusing on indigenous cultures and their ecological knowledge.
Equal Access Fund	Improving literacy for Australians as a means of addressing systemic and intergenerational disadvantage.
Espero Fund	Supporting community advocacy, overseas development, education and medical research.
Eve and Bill Chandler Fund	General charitable purposes.
Fairer Futures Fund	Supporting Indigenous communities and disadvantaged women in Australia and overseas.
Fairness Fund	Supporting human rights, education and employment, particularly for Indigenous youth, women and refugees.

FUND	FOCUS OF FUND
Family Life Futures for Children Fund	Supporting the programs and activities of Family Life.
Farrall and Nolan Family Account	General charitable purposes.
Felicity Hampel Making a Difference Fund	Supporting education, women and children who have experienced family violence and survivors of sexual assault.
Fellowship for Indigenous Leadership Fund	Recognising leadership and providing opportunities to emerging leaders within Victoria's Indigenous communities.
FG Advisory Charitable Fund	Supporting community development, education, environment and overseas aid.
FGF Charitable Fund	General charitable purposes.
Fiona Shields Fund	Supporting community services and welfare, community development and advocacy, environment and overseas aid.
Fire Relief Fund for First Nations Communities	Offering culturally sensitive support to First Nations people on the east coast in response to the 2019-20 bushfires.
Four Eleven Seven	General charitable purposes.
Friends of Coolart	Supporting Parks Victoria in the promotion, preservation and enhancement of the Coolart Wetland & Homestead.
Geddes Nairn Development Fund	Supporting projects and organisations working to combat the unequal distribution of opportunities across the social, economic, political and cultural spheres.
Geostudies Fund	General charitable purposes, with interest in the environment.
Gerard Patrick Lonergan Scholarship Fund	General charitable purposes.
Global Gardens of Peace	Supporting the vision of Global Gardens of Peace to create peaceful, safe and serene environments.
Global Leadership Fund (Main & Extension)	Developing leadership within communities.
Goulburn Valley Medical Workforce Fund	Providing health scholarships in the Goulburn Valley area.
Graduate Women Victoria & Graduate Women Victoria Donors Fund	Providing scholarships for women in tertiary education in Victoria and scholarships for women undertaking masters and doctoral studies.
Greg Larsen Family Fund	Providing education to the disadvantaged in overseas countries and addressing homelessness in Melbourne.
Grieve Family Fund	Supporting social justice, especially projects working with children or addressing environmental issues.
Grigg Family Fund	Supporting education, health, the environment and social justice.
Groundswell	A giving circle created in response to the climate crisis, accelerating action and supporting solutions by funding high impact climate advocacy.
Grummitt Family Fund	Supporting research into cancer and heart disease, aged care and health facilities, with a special interest in needs within the Goulburn Valley.
Gudda Fund	General charitable purposes.
Gumnut One*	General charitable purposes.
Halstead Freshi	Assisting in the conservation of wildlife, animal protection and education.
Hamer Family Fund	Focusing on the performing arts, especially music, and innovation in care for the environment.
Hardman Family Fund	General charitable purposes.
Hart Line Fund	General charitable purposes, principally in the areas of education, the arts, human rights and the environment.
Hazel Rowley Literary Fund	Supporting biographers, writers and presenters on writing experiences.
Heartwood	Providing shelter and strength to human life and the natural world around us.

FUND	FOCUS OF FUND
Heather Watkins Memorial Fund	Assisting families affected by suicide, especially those with young and teenage children.
Henkell Family Fund & Henkell Family Fund 2	Supporting the vocal arts, in particular opera, as well as the German-Australian community.
Henry Stein Fund	Increasing access to and participation in the community by adults with autism, intellectual or profound disabilities.
Herbert and Inge Littauer Fund	Supporting refugees, aged care, language and resettlement projects, health and cancer research and more.
Hilary Dixon and John Dempster	General charitable purposes.
Hobsons Bay Community Fund (Main & Extension)	Benefitting and strengthening the community of Hobsons Bay for present and future generations.
Holding Redlich Social Justice Fund	Promoting social justice in the community, with a focus on assisting disadvantaged young people.
Homeward Bound Projects Fund	Supporting women with a STEMM background who demonstrate a new model of leadership to create better outcomes for the planet.
Homework Club Partnership Fund	Improving education outcomes for migrant and refugee young people.
Hopetoun Fund	General charitable purposes.
Howard McGeary Charitable Fund	Supporting adults and children with physical and intellectual disabilities, the homeless and the disadvantaged, and the environment.
Impact100 SA	Making high impact grants to charitable causes in South Australia.
Impact100 Sydney North	Making high impact grants to charitable causes in Sydney North.
Impact100 Tasmania	Making high impact grants to charitable causes in Tasmania.
Impact100 WA (Main & Cash)	Making high impact grants to charitable causes in Western Australia.
Initiate Action Community Fund	Supporting education, girls and women in Melbourne's western suburbs.
Isabella and Marcus Paediatric Brainstem Tumour Fund	Supporting research into paediatric brainstem tumours with a focus on Diffuse Intrinsic Pontine Glioma.
James Family Fund	Supporting early childhood, youth at risk, homelessness, international poverty and aid.
Jared Dunscombe Fund	Supporting youth and health projects.
Jax Acacia Fund	Supporting people with Parkinsons disease and preserving the environment to ensure it remains healthy for future generations.
Jean Vincent Fund	General charitable purposes.
John and Eileen Clark Family Fund	General charitable purposes.
John Cummins Memorial Fund (Main & Extension)	Supporting brain tumour research, educational opportunities for young people experiencing disadvantage and other related social justice programs.
Johnstone Gumption Fund	Focusing on the environment, open spaces, regional botanical gardens, and projects that support citizenship and community.
Joy Mavis Schwartz-Seidler Musical Scholarship	Providing musical scholarship to students from Glossop High School in South Australia.
JRA Support Fund	Supporting Indigenous services, education, arts and cultural organisations and environmental action groups.
Jude Fox Bursary Fund	Building on Jude's passion for education and her belief in the strength and potential in people.
Judy Glick Fund	General charitable purposes.
Juliet Allen Fund	Sustaining the environment and supporting women and children through health and education.
Jump Start	Helping not-for-profits get stronger – more efficient, effective and sustainable.
Juno Fund	General charitable purposes.
Kaplan Dascalu Fund	Supporting vulnerable people on the basis of family violence, homelessness, cultural identity.

FUND	FOCUS OF FUND
Katrina's Sparkle Fund	Supporting the safety and wellbeing of children and babies, social justice and fairness, and family harmony and cohesion.
Keith and Jeannette Ince Fund	Focusing on the environment and threatened species, education, assisting indigenous communities and early childhood development.
Kenneth Myer Fellowship	Providing scholarships for advanced education and training to develop knowledge and skills required in AFTRS programs.
Kirkham Family Fund	Supporting music and theatre, the environment and animal welfare.
Koondee Woonga-gat Toor-rong (Main & Extension)	Investing in First Nations people and organisations based in Victoria to support change and innovation with a focus on self-determination.
Koshland Innovation Fund (Main & Extension)	The Koshland Innovation Fund supports initiatives to contribute to learning, democracy, and ideas.
Krils Fund	Supporting early intervention and prevention, youth, education and wellbeing.
Kristian Fredrikson Scholarship	Providing scholarships to support career development for arts/theatrical design makers.
KSR Accommodation Scholarship Fund	Providing fee relief for Kew Student Residence for those in financial need.
Kylee Farrell Lung Fund	General charitable purposes.
Leosia	Supporting grassroots and holistic Indigenous organisations that focus on empowerment and self-determination.
Levy Family Fund	Supporting a variety of social and environmental charities.
Lily Calvert Memorial Fund	Raising awareness and support of pediatric palliative care and encouraging conversations around grief and child loss.
Linh Do Fund	Furthering social justice and environmental outcomes by supporting individuals leading change in communities.
Lois Bryson Fund	Promoting human rights through projects that address injustice and inequity between groups of people.
Lynne Wannan Fund (Main & Extension)	Supporting young women in leadership roles, particularly in relation to the status of women and community services.
Macmar Fund	Supporting primary school education opportunities.
Macston Social Endeavour	General charitable purposes.
Malcolm Broomhead Fund	General charitable purposes.
Mangala Fund	Supporting Monash University.
Mannifera	Defending and augmenting a thriving, healthy, democracy and building an economy that works for everyone.
Maramingo Fund	General charitable purposes.
Maritzburg College Fund	Furthering quality education in sub-sahara Africa.
Mary and David Fund	General charitable purposes.
Mary Perrottet Fund	General charitable purposes.
Mary-Lou Reid Memorial Fund	General charitable purposes.
Maude Hargrave Fund	Supporting community services and welfare, and health and medical research.
Mayer Morris Family Fund	Supporting Indigenous Australians, refugees living in Australia and residents of Timor Leste.
McGregor Family Fund	General charitable purposes with an emphasis on education for the disadvantaged.
McMillan Family Fund	General charitable purposes, with an emphasis on poverty reduction in Australia and abroad.
Melanie Holden Memorial Fund	Assisting a young cancer sufferer's attendance at the Gawler Foundation.
Melbourne Airport Community Fund	Improving educational outcomes and employment pathways for residents within a 15km radius of Melbourne Airport.

FUND	FOCUS OF FUND
Melbourne Writers Festival Fund	Supporting a socially and culturally inclusive festival that includes Australia's biggest literature event for schoolchildren.
Meliiodora Fund	Supporting ecological sustainability, environmental advocacy and nature conservation.
Metta Fund	General charitable purposes.
Michael Keith Halprin Fund	Assisting medical research.
Miette Skiller Scholarship Fund	Addressing the shortfall in paediatric brain cancer research by educating and training a new generation of scientists.
Miller Fund	General charitable purposes.
Misericordiae	Supporting works of mercy.
MOGGS	General charitable purposes.
Morgan Mansell Fund	Honouring the memory of Morgan Mansell and supporting research into cures for diseases such as melanoma, MS and other rare diseases such as CTLA4 deficiency.
Morris Family Fund (Main & Extension)	Supporting social justice and equality, developing understanding of Christian Faith, refugees and other related causes.
MTAA Super Scholarship Fund	Providing greater opportunity for individuals interested in the automotive and related industries to pursue relevant education and training.
Muna Rahman	General charitable purposes.
Mundy-Westall 'Moment-in-Time' Fund	Supporting conservation, international aid and Indigenous issues.
N E Renton Bequest & Family Fund	Supporting children experiencing mental health issues.
National Parks Community Fund	Supporting work to protect the integrity of Victoria's unique national parks and conservation reserves, and better protect other natural areas, plants and wildlife for future generations.
NICHE	General charitable purposes.
Nicholas R Taylor Fund	Supporting conservation, community development, Indigenous education, and people experiencing disability.
NSW Chinese Community Emergency Response Fund	Supporting people in need across New South Wales.
O'Nibbs Family Fund	General charitable purposes.
O'Shea-Thompson Family Fund	Supporting working in the areas of human rights, Indigenous self-determination and improving access to education.
Omi-Albers Fund	Supporting refugees, children and youth, social change and human rights.
One for the World	A movement of people changing charitable giving to end extreme poverty. Members pledge to give 1% of their income to the world's most cost-effective profits.
One Tomorrow Charitable Fund	Supporting processes, events and activities to make a positive and measurable difference to selected causes.
Our Societies, Our Earth, Our Future	Supporting the building of a legacy for our planet and our societies thousands of years from now. Contributions are directed to vast Shared Earth Reserves, protecting wild landscapes, rich biological diversity, remote communities and their diverse cultures, and our shared histories.
Palliative Care Victoria	Supporting the work of Palliative Care Victoria and benefitting palliative care in Victoria more broadly.
Pandora Kay and John Larkins Creativity Fund	General charitable purposes.
Parsons and Nathan Gumnut	Supporting refugees, aged care, language and resettlement projects, health and cancer research and more.
Paterson Family Fund	Assisting groups who need support, particularly people with disabilities.
Pathfinders Research Fund	Supporting medical research by granting funds to enable a scientist to take a research concept into the lab, evaluate it and create a research pathway.
Phyllis Budd Fund	Supporting young people wanting to work in hospitality but due to financial difficulty might not be able to continue to study.

FUND	FOCUS OF FUND
Pine Grove Fund	General charitable purposes.
Pitcher Partners Charitable Fund	General charitable purposes.
Pomegranate Fund	Supporting health, education and community development.
Positive Futures	Supporting the sustainability of the environment and the wellbeing of those who live in it, with particular focus on women's issues.
Positive Ideas Group	Fostering excellence and innovation.
Prevention United	Focusing on the promotion of mental wellbeing and the prevention of mental health conditions across all age groups and types of conditions.
Quercus Fund	Supporting community initiatives and conservation.
Quinten Curry Tribute	General charitable purposes.
Raettvisa Fund	General charitable purposes.
Ralph and Betty Sims Fund	Focusing on medical research, mental health, Indigenous wellbeing and Christian welfare.
Rana and Alan Fund	Supporting the environment, Indigenous programs, and refugees, and providing overseas aid to help communities become self sufficient.
Rapid Advocacy Fund (Main & Extension)	The Rapid Advocacy Fund is committed to rapidly injecting funds into strategic advocacy campaigns, especially those responding to the COVID-19 pandemic in Australia.
Renner Family Fund	General charitable purposes.
Reve Fund	General charitable purposes.
Ridgeway Fund	Focusing on overseas aid and development, women and girls, and community support.
RO Fund	General charitable purposes.
Roan Lyddy-Meaney Fund	Honouring the life of our son and supporting in perpetuity the values that he lived by.
Rod and Pamela Wells Community Fund	General charitable purposes.
Ron Castan Education Fund	Supporting education, social justice, Indigenous communities, refugees, human rights and civil liberties.
Ros and Elsie Garnet Memorial Fund	Supporting the important work of the Victorian National Parks Association.
Running Waters Fund	Supporting urban ecological sustainability and social justice, particularly through advocacy and community development.
S R Marzano Community Fund	Supporting the education and vocational training of disadvantaged boys and men.
Safe Steps Family Violence Response Centre	Supporting the Safe Steps Family Violence Response Centre – Victoria's statewide first response service for women, young people and children experiencing family violence.
Sally Browne Fund	Supporting Melbourne's Royal Botanic Gardens, the School of Botany at Melbourne University and research into motor neurone disease.
Sally Isaac Memorial Scholarship Fund	Creating educational opportunities for young women aged 35 or younger who make a significant contribution to the community in fields of local government, social justice and community health.
Sally Oatley Memorial Fund	Supporting mental health services, research, education and training, with emphasis on young people and families.
Sandcastle Projects	Investing in the future by supporting children and families to get the best start in life.
Scarlet's Fund	Supporting creative projects in developing communities, focusing on children and young people.
Seedling	Supporting positive changes in social, economic, political, environmental and cultural spheres.
Semaphore Fund	General charitable purposes.
Seymour District Charitable Fund	Building the capacity, strength, cohesiveness and wellbeing of the local community and its people.
Silver Gold Fund	General charitable purposes, in particular education and the combating of disadvantage with preference for granting to smaller organisations.

FUND	FOCUS OF FUND
Slater and Gordon Community Fund	General charitable purposes with an emphasis on social justice.
Slater and Gordon Health Projects and Research Fund	Supporting health and medical research and people experiencing disability.
Smith and Sheppard Fund	Supporting education and opportunities for young people, and environmental causes.
Social Justice Fund	Promoting social and economic justice in Australia and in the developing countries of Africa, Asia, Latin America and the Pacific.
South Eastern Primary Care Fund	General charitable purposes.
Southern General Practice Education Fund	General charitable purposes.
Spend It Well Fund	Supporting projects in East Timor such as building schools to assist in rebuilding the nation's education infrastructure.
St Mark's Anglican Church Fitzroy Choral Scholarship Fund	Encouraging the practice, performance and development of sacred choral music at St Mark's Anglican Church, Fitzroy.
Stanley Family Fund	General charitable purposes.
Story Street Fund	Focusing on community welfare such as homelessness in Melbourne, refugee welfare and school relief for disadvantaged students.
Strachan Clan Seil Fund	Supporting the work of Very Special Kids, a hospice for terminally ill children and their families.
Stubbs and White Charitable Fund	Supporting people with MS or cerebral palsy, and the disadvantaged in Melbourne CBD.
Sunning Hill Fund	Enhancing education and training opportunities for Indigenous people in the Northern Territory and Kimberley.
Sunshine and Crocodile Fund	General charitable purposes but with particular interest in Indigenous communities and capacity building projects in Sri Lanka.
Surgeons Impact Fund	Providing support and allied health outcomes for cancer patients of the oesophagus, stomach, liver and pancreas.
Sylvia Fisher Fund	Awarding extended study bursaries to singers for professional development.
THF Fund	General charitable purposes.
Taines Fund	Funding the Taines Scholarship for women undertaking honours studies in Victoria, in association with Graduate Women Victoria.
Tan Family Fund	Supporting Indigenous projects and advocacy.
Tango Fund	General charitable purposes.
Tasmanian Walking Company Fund	Inspiring people to connect with and conserve the natural environment and culture of the Australian wilderness.
Tass Nyungar Fund	General charitable purposes.
Team Miller	Focusing on preventative programs which provide opportunities and support to vulnerable young people.
The Andrew Plain Memorial Fund	General charitable purposes.
The Bradley-Weightman Charitable Fund	Supporting various charities with a focus on education and health.
The Caroline Durré Fund	Supporting the protection of the natural environment and biodiversity of Australia and seeking equity and justice for women and refugees.
The Clements Fund	Supporting the Gawler Foundation's 'Life for Living' program and the renal cell carcinoma research program at the Austin Hospital.
The Giving Well	General charitable purposes.
The Gruppetto Fund (Main & Extension)	Supporting the care and development of disadvantaged children and displaced people with special needs.

FUND	FOCUS OF FUND
The GSV Family History Research and Education Fund	Supporting the work of GSV to assist people in discovering their family history through expert advice and educational programs.
The Lane Family Fund	Providing children and young people who have health and learning difficulties with skills, services and family support.
The Ngaruk Fund	General charitable purposes.
The Oak Tree Fund	General charitable purposes.
The Ripple Fund	Supporting arts and culture, community services and welfare, community development and advocacy and more.
The Robison Fund	Charitable purposes and in particular education and combating disadvantage.
The TAP Fund	Supporting education, training and employment, and people experiencing disability.
THLOW	General charitable purposes.
Thu Giang Nguyen Fund	Awarding an annual science prize to a student at Melbourne Girls College and a scholarship to an Indigenous student in the Goulburn Valley.
Tony Adams Fund (Main & Extension)	Continuing the work of Professor Tony Adams in international education by supporting research, professional development and student mobility.
Towards a Just Society Fund	Reducing injustices with a current emphasis on Indigenous education and capacity building.
Trikojus Education Fund	Awarding scholarships to disadvantaged and gifted children in government schools.
Tripple	Using the power of capital to propel us towards a just future for people and planet.
Two Cents Fund	General charitable purposes.
Unico Community Fund	Supporting education, training and employment.
vandm	Supporting education, training and employment.
Vanraay Family Fund	Supporting equality and justice in the community, and projects that assist in initiating change so that people can help themselves.
Vicki Standish Family Fund	Supporting the wellbeing of children and young people and to assist them to reach their potential.
Vilde Family Fund	Focusing on support for the environment and animal welfare issues.
Wa Initiative	Helping Rork Projects support other Indigenous organisations in their work offering quality secondary education scholarships for Indigenous children from regional, rural and remote communities.
Wahroonga Fund	Supporting socioeconomic research to tackle poverty Australia wide, particularly in Melbourne and rural areas.
Wajnberg Russell Family Fund	Supporting charitable organisations with a focus on Indigenous communities and the environment.
Walker Wayland Australasia Fund	General charitable purposes.
Wanless Family Fund	General charitable purposes.
Wealth Mentoring Group Fund	General charitable purposes.
Webster Fund	General charitable purposes.
Webster Raysmith ACF Staff Scholarship Fund	Providing opportunities for professional development in the philanthropic sector.
Westgate Health Charitable Fund	General charitable purposes.
Will and Lucy Martin Fund	Supporting organisations that attempt to make a meaningful difference to young Australians in need particularly in the areas of health and education.
Williams Fund	Supporting projects promoting social justice, Aboriginal reconciliation, and sustainability of the environment, both in Australia and overseas.
Windarra Fund	General charitable purposes.
With One Seed	Supporting subsistence communities in Timor Leste to make environments sustainable, and supporting universal education and global partnerships.

FUND	FOCUS OF FUND
Women's Health Victoria Fund	Supporting the work of Women's Health Victoria to promote, advocate for and support women's health in Victoria.
Woolley Family Fund	General charitable purposes.
Worrowing Fund	Supporting environmental sustainability and environmental education.
Zalewski Fund	Supporting projects tackling homelessness, mental illness, human rights and post correction support with an emphasis on women and young people.



Australian Communities Foundation

Level 6, 126 Wellington Parade
East Melbourne VIC 3002

(03) 9412 0412

info@communityfoundation.org.au

communityfoundation.org.au