

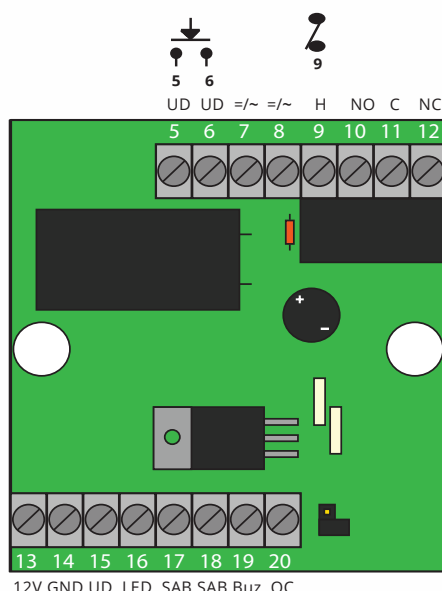
Assembly - connection box

CVT6 - Art. No: 460090

Connection for CT1000 and PR1000

The connection box has an built-in converter for the reader. Connect up to 24V AC or DC on connector 7 and 8 and the you have 12V DC on connector 13 and 14. There is a relay output (C, NC, NO) for the door. The REX button can be connected on 5 and 6. Connector 9 is an option for a Hold function. The connector box makes it simple for you - connect all wires from the installation on connector 5 to 12 and all wires from the reader on connector 13 to 20.

All connectors from 5 to 12 is from the installation:



Connector	Description	Color
5	REX button	
6	REX button	
7	Input voltage, =/~	
8	Input voltage, =/~	
9 og 5	Option Hold, from a door contact	
10	NO	
11	C	
12	NC	

All connectors from 13 to 20 is for CT1000 or PR1000.

On the connectors 13 and 14 can power be supplied up to approx. 100mA.



For CT1000	Description	Connect.	For PR1000
Red	12V DC	13	
Black	GND	14	
Blue	REX	15	
Orange	Red LED, 0V	16	
White	Output, 0V	17	Sabotage
Green	Green LED, 0V	18	Sabotage
Brown	Buzzer/Hold	19	
Yellow	Output, 0V	20	