

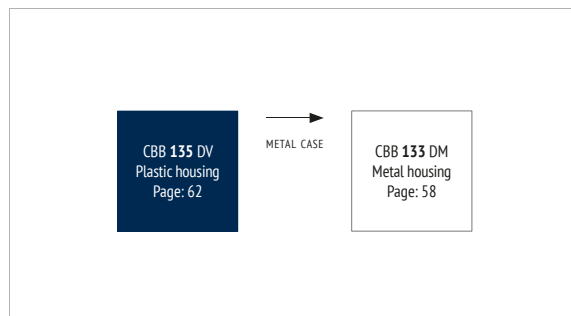
FILM CAPACITORS · MODULES

CBB 135 DV SERIES

FEATURES

- Customer Specific Designs
- High ripple current capability
- Self-healing
- Long lifetime

OVERVIEW



PRODUCT



APPLICATIONS

- High power frequency converters
- Electric and hybrid electric vehicles

CHARACTERISTICS

ITEM	CHARACTERISTICS
Climatic Category	40/105/56 (IEC 61071)
Operating Temperature	-40 ~ +105 °C ($\Theta_{\text{hotspot}} \leq 105$ °C) $\Theta_{\text{hotspot}} = 85$ ~105 °C: See Voltage Derating Diagram
Storage Temperature	-40 ~ +105 °C
Rated Voltage U_{RDC}	450 ~ 800 V _{DC}
Capacitance Range	300 ~ 1.000 μF
Capacitance Tolerance	± 10 % (K), ± 5 % (J)
Voltage between Terminals U_{TT}	1,5 * U_{RDC} (20 °C, 10s)
Voltage between Terminals and Case U_{TC}	≥ 3.000 V _{AC} (20 °C, 50 Hz, 10s)
Max. Overvoltage	1,1 * U_{RDC} (30 % of time under load) 1,15 * U_{RDC} (30 min. per day) 1,2 * U_{RDC} (5 min. per day) 1,3 * U_{RDC} (1 min. per day) 1,5 * U_{RDC} (max. 30 ms, 100ms per day)
Insulation Resistance R_i °C	≥ 10.000 M Ω * μF (20 °C, 100 V _{DC} , 1 min)
Dielectric Dissipation Factor $\tan \delta$	$\leq 2 * 10^{-4}$ (20 °C, 1 kHz)
Life Time Expectancy	100.000h, failure rate 100 FIT ($\Theta_{\text{hotspot}} 70$ °C, U_{RDC})
Reference Standard	IEC 61071:2007

ENVIRONMENTAL

The products are RoHS, WEEE and REACH compliant.

The detailed version please see separate "Environmental Certificates" document or www.jianghai-europe.com

APPROVALS

UL94-V0:

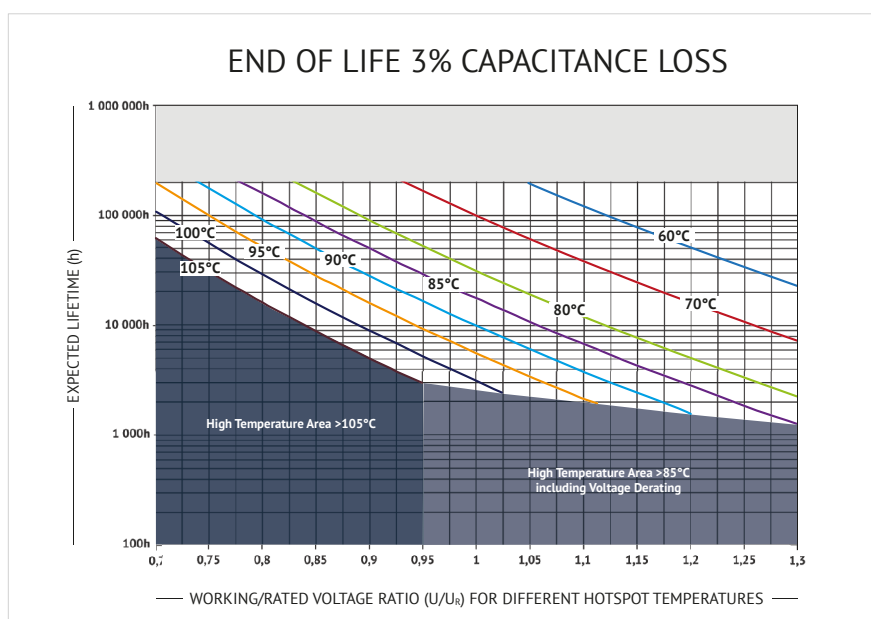
Plastic & Compound Mass

UL810:

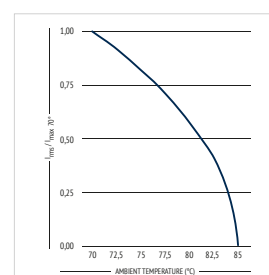
CZDS2.E227010
(Construction)

(except customized)

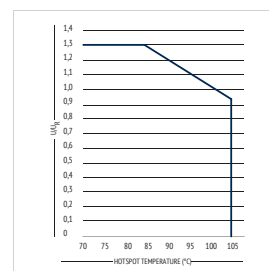
LIFETIME



CURRENT DERATING



VOLTAGE DERATING



JIANGHAI EUROPE

Electronic Components GmbH





ENGINEERED SOLUTIONS

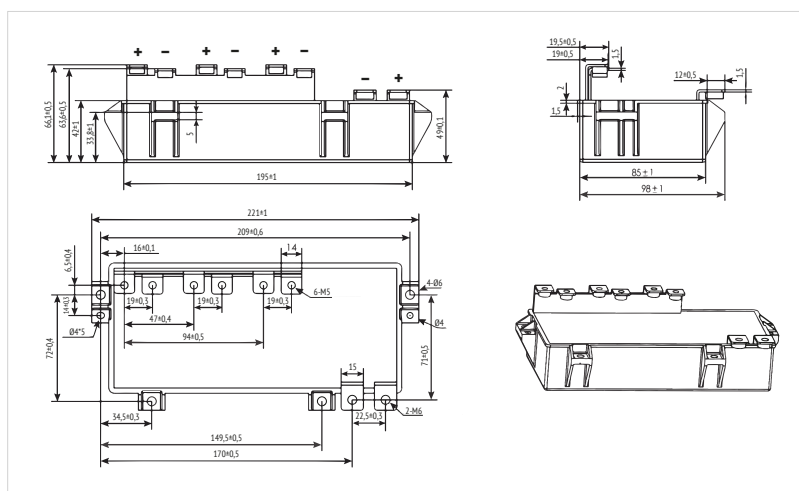
Customer specific adaptations needed? Please contact JIANGHAI Europe GmbH:
TELEFON: +49 (0) 2151 652088-0 | E-MAIL: INFO@JIANGHAI-EUROPE.COM

2/9
v2020.2

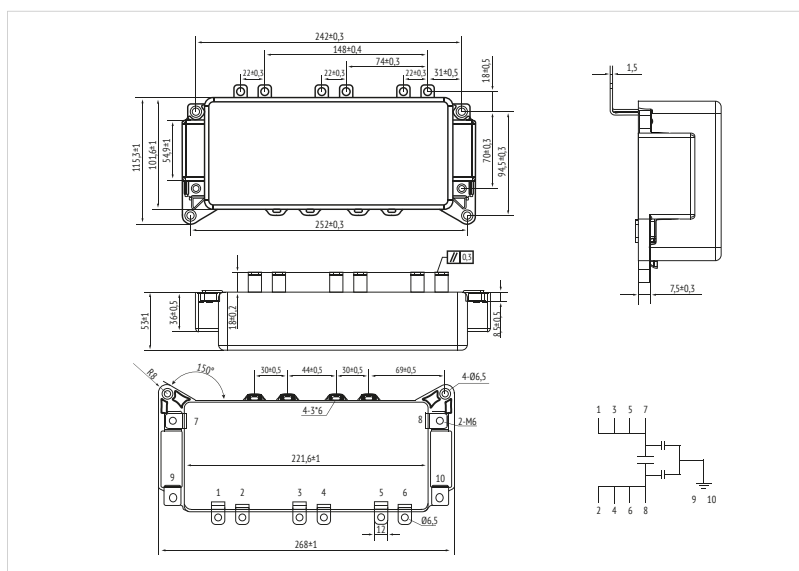
MARKING

	BRAND
CBB 135	SERIES DESIGNATION
500μF ±10%	CAPACITANCE AND TOLERANCE
U_R = 800V_{DC} SH	U _R RATED VOLTAGE
U_{TC} = 3000V 50/60 HZ	U _{TC} VOLTAGE BETWEEN TERMINALS AND CASE, FREQUENCY
-40~+105°C IEC61071	TEMPERATURE RANGE, REFERENCE STANDARD
Discharge before handling	SAFETY WARNING
E03F031c 	DATE CODE

■ **EXAMPLE DRAWING #1** ►

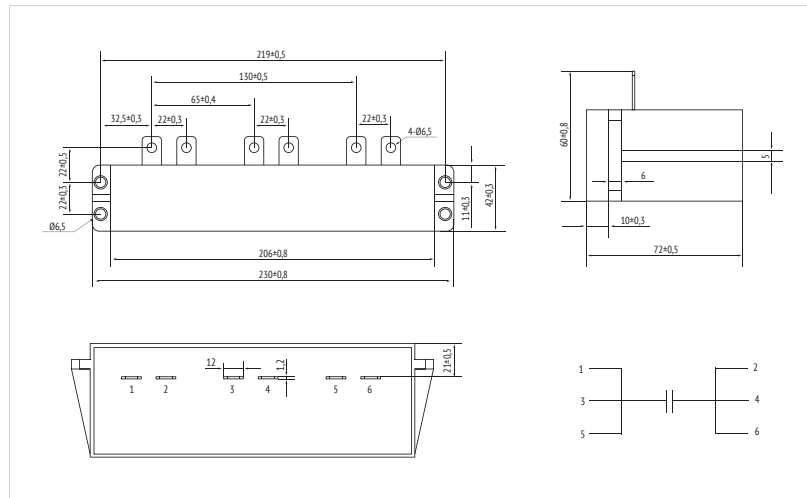


■ EXAMPLE DRAWING #2 ►

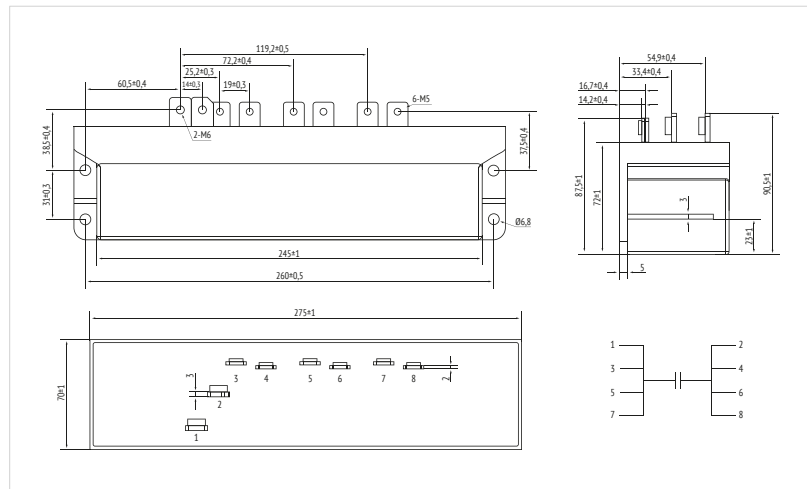


in mm

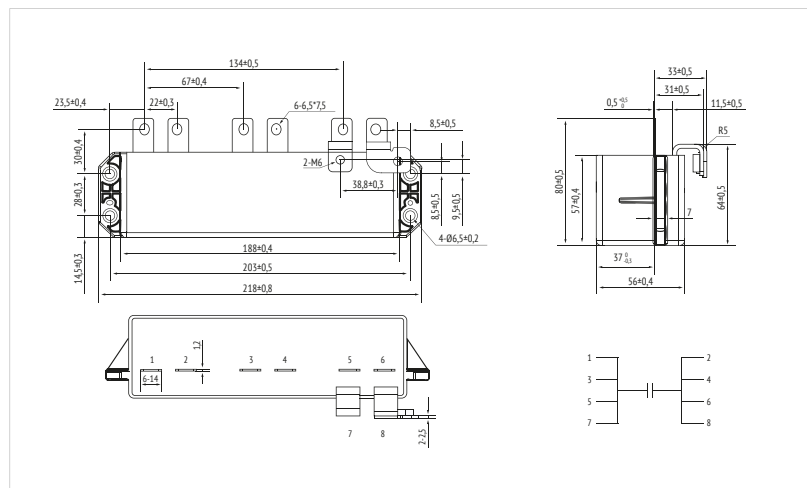
EXAMPLE DRAWING #3 ►



EXAMPLE DRAWING #4 ►

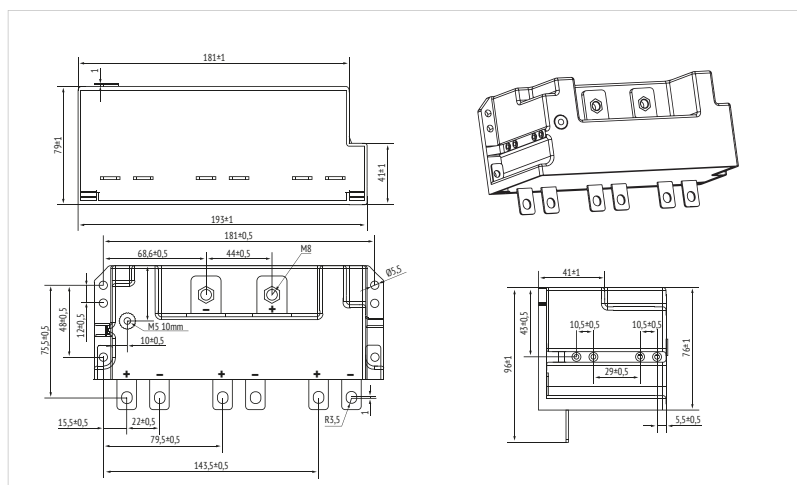


EXAMPLE DRAWING #5 ►

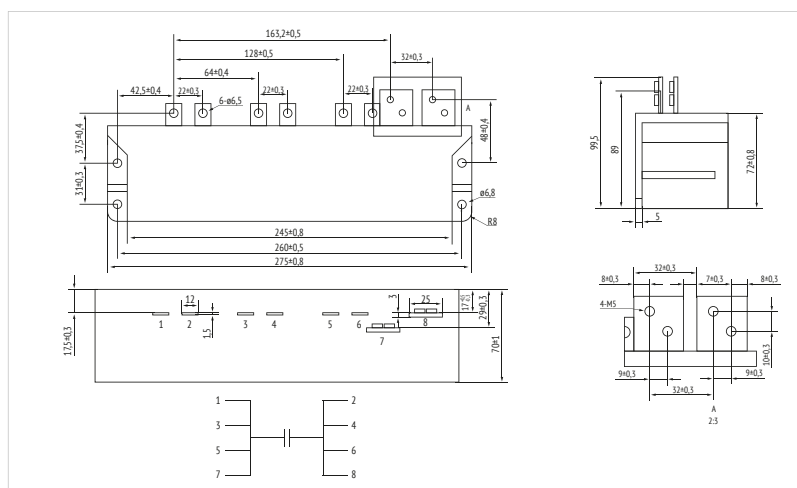


in mm

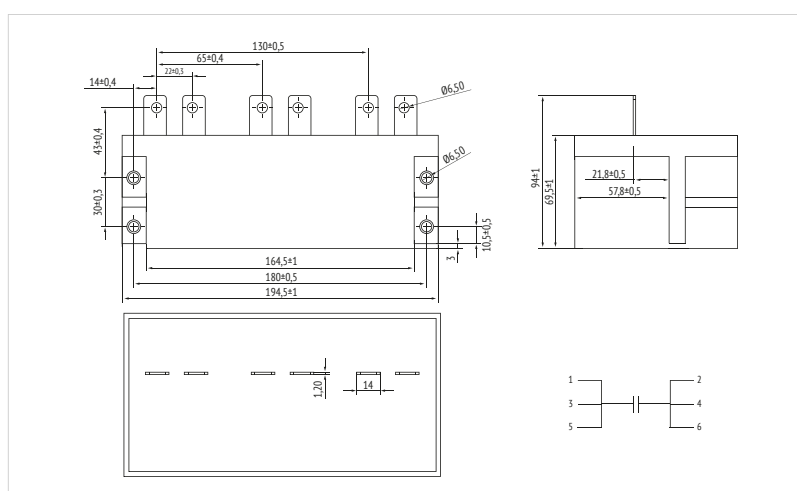
EXAMPLE DRAWING #6 ►



EXAMPLE DRAWING #7 ►



EXAMPLE DRAWING #8 ►



in mm

Per visualizzare il catalogo completo siete invitati ad [effettuare il login sul sito](#) oppure ad [effettuare la registrazione gratuita](#).