

Two vertical bars on the left side of the page: a yellow one on top and a green one below it.

SL-MIPI-LVDS-HDMI-CNV-11 Datasheet and Pinout

Rev. 20201117093325

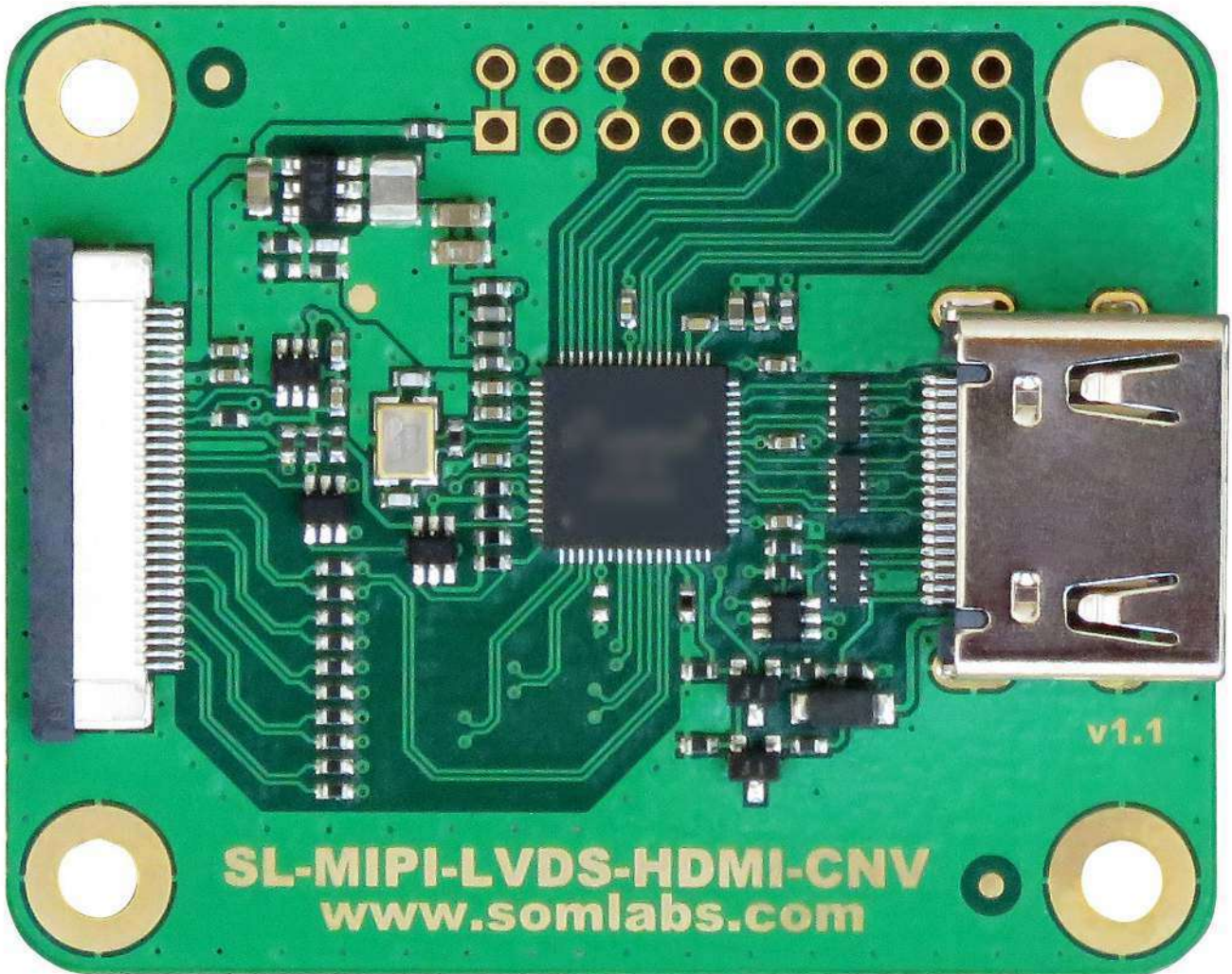
Source URL: http://wiki.somlabs.com/index.php/SL-MIPI-LVDS-HDMI-CNV-11_Datasheet_and_Pinout

Table of Contents

General description	1
Features	2
Pictures	3
Ordering info	6
Operating ranges	7
Electrical parameters	8
MIPI-DSI (input) Pinout	9
LVDS (output) Pinout	11
HDMI (output) Pinout	13
Dimensions	14

SL-MIPI-LVDS-HDMI-CNV MIPI-DSI to LVDS and HDMI converter Datasheet and Pinout

General description

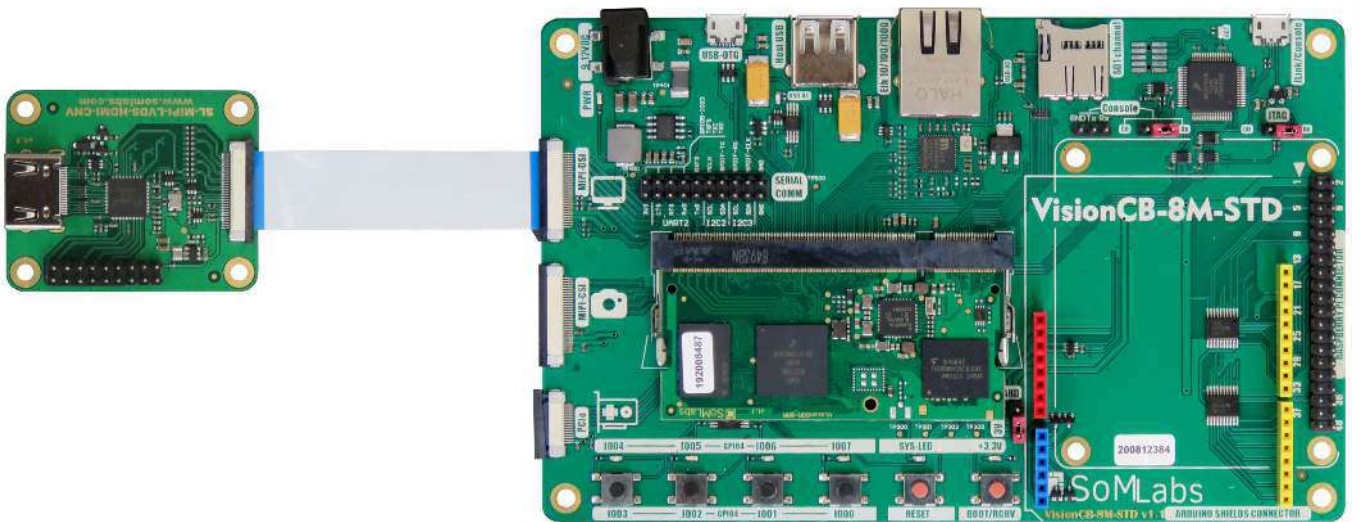
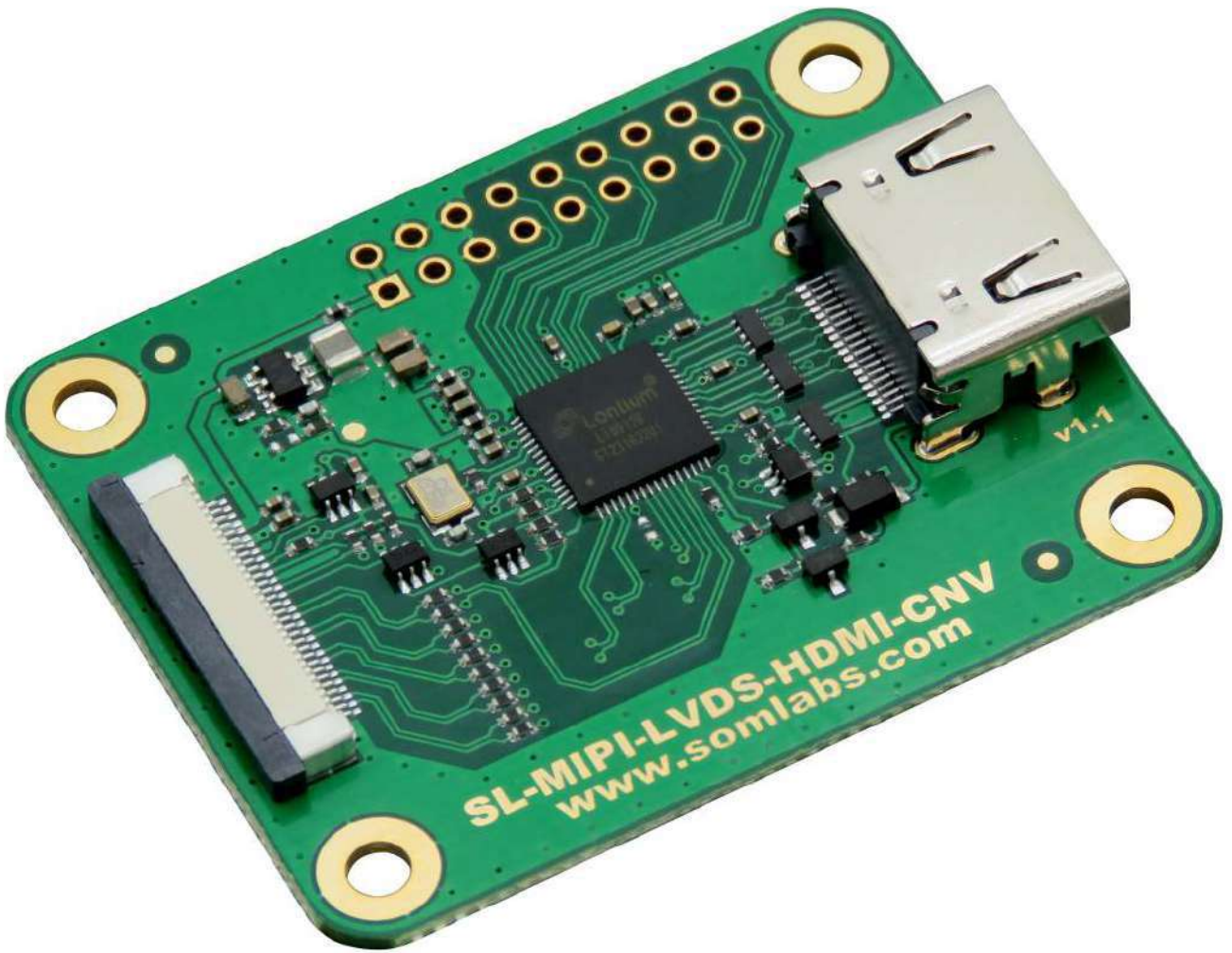


SL-MIPI-LVDS-HDMI-CNV (MIPI-DSI to LVDS HDMI converter) is flexible MIPI-DSI to LVDS and/or HDMI converter. The solution we dedicate to SoMLabs carrier boards equipped with MIPI-DSI interface (with FPC30 connector). Converter is fully compliant with DSI1.02 and HDMI1.4 and converts video stream up to 1080p @60Hz/8b. SL-MIPI-LVDS-HDMI-CNV is fully compatible with SoMLabs carrier boards equipped with MIPI-CSI FPC30 connector.

Features

- MIPI-DSI to LVDS and/or HDMI display converter
- Integrated D-PHY1.1 (DSI1.02)
- From 1 up to 4 MIPI input data lanes
- Compatible with MIPI-DSI data packets: 18bpp, RGB666 and 24bpp RGB888
- Input bandwidth up to 6Gb/s (4 lanes)
- LVDS output clocking up to 154 MHz
- Fully compatible with SoMLabs carrier board:
 - VisionCB-8M-STD (dedicated to i.MX8M mini multicore MPU)
 - VisionCB-STM32MP1-STD (dedicated to STM32MP1 multicore MPU)
- Plug & Play solution for SoMLabs customers
- Integrated stereo audio channel
- Connection with carrier board using FPC30 cable A-A type

Pictures



Per visualizzare il catalogo completo siete invitati ad [effettuare il login sul sito](#) oppure ad [effettuare la registrazione gratuita](#).