

# Products Presentation

September - 2019



**SOM**

System on Module

**CB**

Carrier Board

**DK**

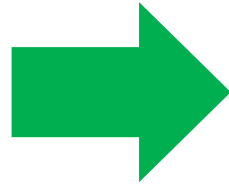
Development Kit

**Engineering**

Since 2003 delivering proven designs

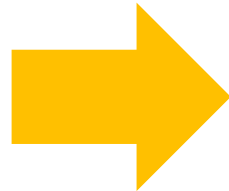
# SoMLabs – Portfolio

**SOM**  
System on Module



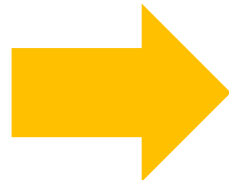
**SOM** - is comprised of a small processor module with CPU bus accessibility and standard I/O functionality and is ideal solution for embedded projects.

**CB**  
Carrier Board



**CB** – is set of HW peripherals corresponding to SOM. SOM requires a matching customer's board or carrier board to establish complete system. Carrier Board together with SOM is ready to use computer on board and is giving enormous flexibility in building their projects.

**DK**  
Development Kit



**DK** - The kit is comprised of a carrier board (VisionCB-STD) with a processor module (VisionSOM-6ULL). SoMLabs is offering STK (Starter Kit) and EVK (Evaluation Kit)

**Since 2003**

Experience Technology Partner (BTC)

**100+**

Electronics Projects

**500+**

Large Customer Base

**Engineering**

Complex Engineering Services

# SOMLabs – Product Families

## VisionSOM: SODIM200

### Connection Type (200 pins)

- ❑ PIN –PIN Compatible Product Family **VisionSOM**
- ❑ Target Application: Low, Medium & High Performance Projects
- ❑ Scalable in Performance
- ❑ Memory Setup (DDRAM, NAND, eMMC, uSD Card)
- ❑ Wi-Fi and BT option for each module
- ❑ Competitive Cost

## ActionSOM: MXM314

Available only as OEM Project License business model

### Connection Type (314 pins)

- ❑ Target Application: Low Power
- ❑ Flexible Memory Setup
- ❑ Wi-Fi and BT option

VisionSOM-RT



VisionSOM-6ULL



VisionSOM-STM32MPI



VisionSOM-8Mmini



VisionSOM-8MNano

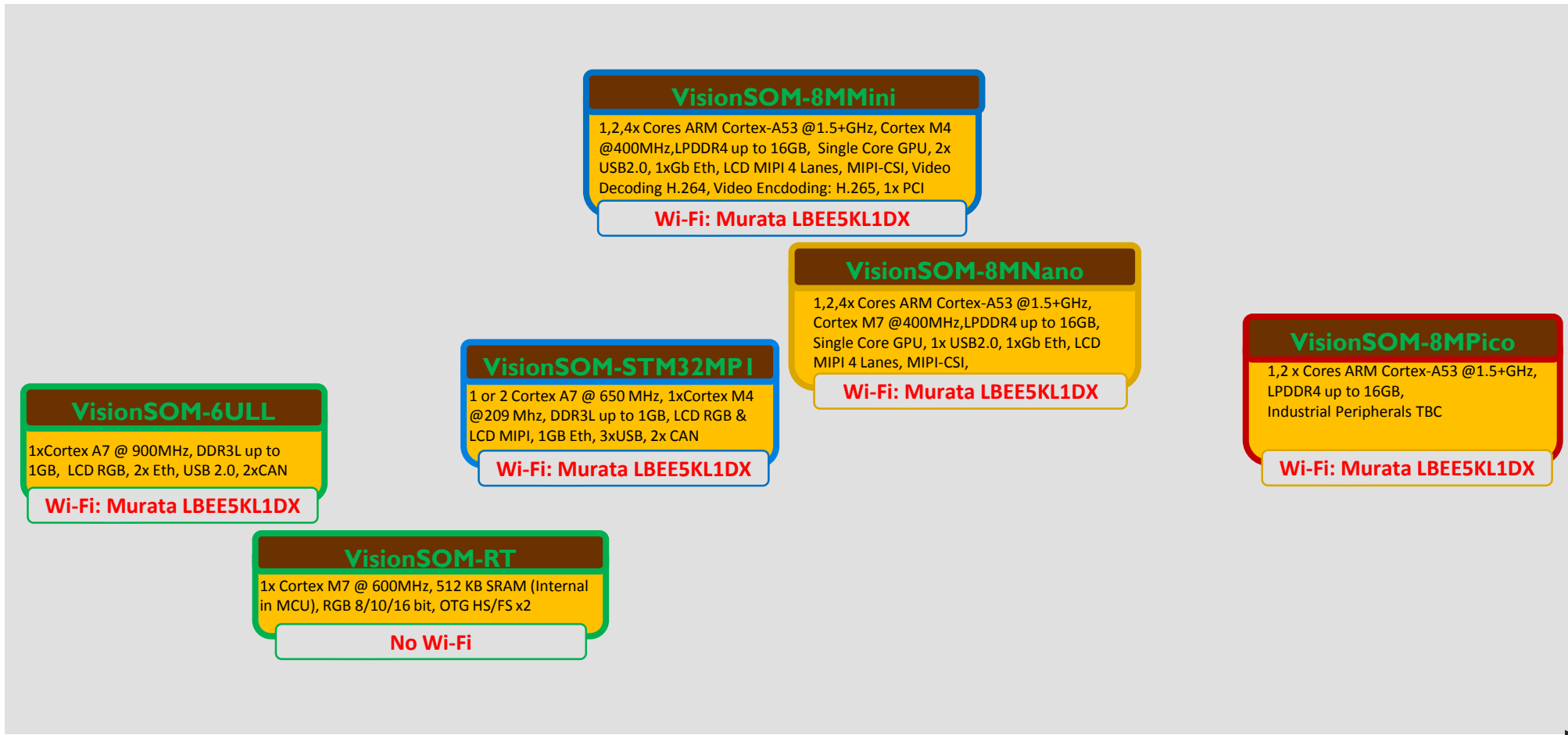


ActionSOM-7ULP



# Roadmap

Performance



Definition

In Design

In Prototype

In Production

2019

2020

# SoMLabs – Additional Services

## Carrier board - Custom Design

- ❑ When additional Features are needed
- ❑ No minimum Quantity
- ❑ Customer receive designing files

## SOM – Custom Design

- ❑ When some functionality is missing
- ❑ Another Form Factor is needed

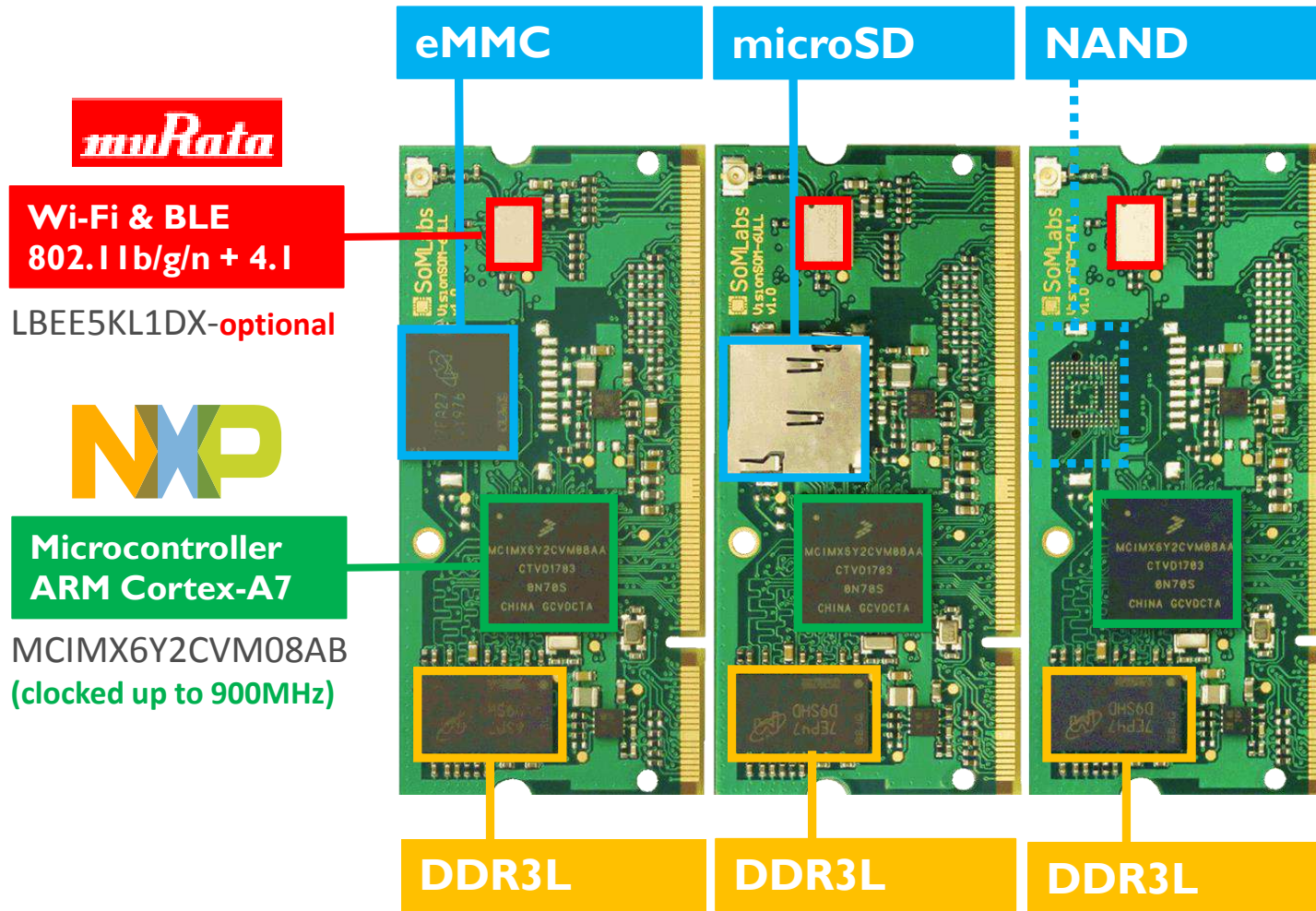
## Linux SW Development

- ❑ Yocto dedicated training
- ❑ Linux driver development
- ❑ Performance optimization






# VisionSOM-6ULL – Flexible Setup



## Target Applications

- ❑ Industrial embedded Linux
- ❑ Appliances Home Automation – Smart Home
- ❑ Human-machine Interfaces (HMI)
- ❑ Point-of-sales (POS)
- ❑ Cash Register
- ❑ 2D barcode scanners and printers
- ❑ Smart grid Infrastructure
- ❑ IoT gateways
- ❑ Residential getaways
- ❑ Machine vision equipment Robotics
- ❑ Fitness/outdoor equipment

 Populated on back side

# Complete Industrial Solution

**NXP** MPU I.MX6ULL +

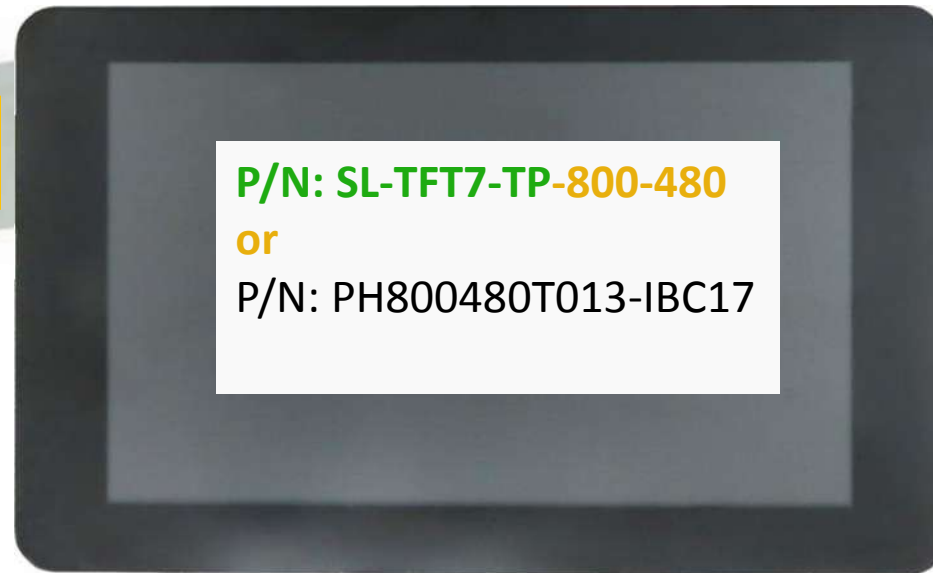
**POWER TIP 7" LCD-TFT** +

**Accessories**

Antenna  
Connector SODIM200



RGB  
or  
HDMI



- ✓ Display size 7 inches
- ✓ Display LCD matrix 800x480
- ✓ Capacitive touch-panel + TP controller
- ✓ 24-b RGB parallel interface
- ✓ Single supply +5V (DC/DC converters)

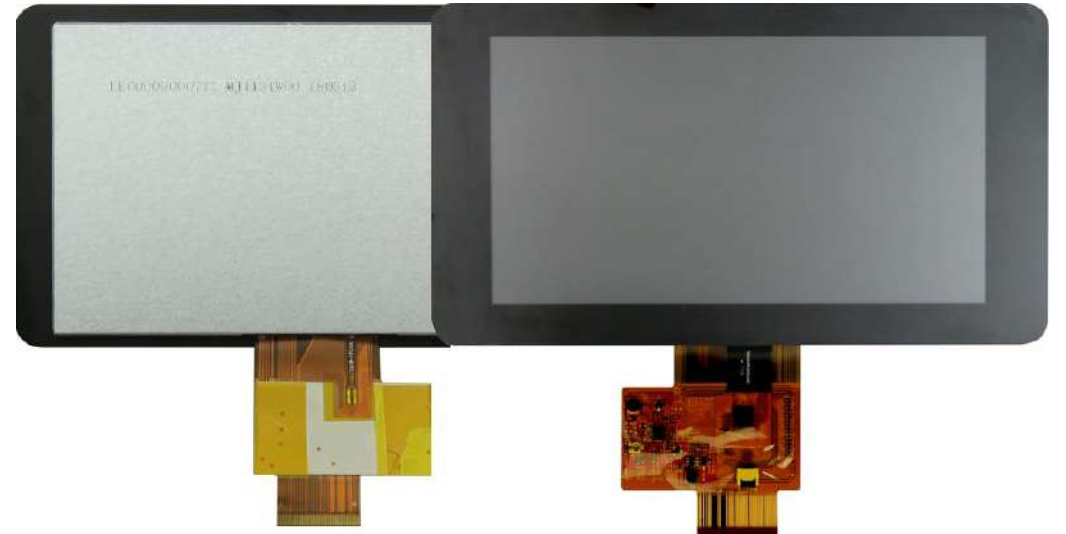


# TFT Solution for VisionSOM-RT & VisionSOM-6ULL

7" LCD-TFT to Buy from SoMLabs



7" LCD-TFT to Buy from SoMLabs & Powertip



 **SoMLabs**

P/N: SL-TFT7-TP-800-480

Include: PH800480T013-IBC06

- ✓ Display Interface 24-bit RGB
- ✓ Display size 7 inches, Resolution:800x480
- ✓ Integrated Capacitive touch panel + TP controller
- ✓ Integrated power supply +5V or 3V
- ✓ Compatible with VisionCB-STD (ver.1.4, ver2.0) VisionCB-IND

 **POWERTIP**

P/N: SL-TFT7-TP-800-480-P

Include: PH800480T013-IBC17

- ✓ Display Interface 24-bit RGB
- ✓ Display size 7 inches, Resolution:800x480
- ✓ Integrated Capacitive touch panel + TP controller
- ✓ Single supply +5V (DC/DC converters)
- ✓ Compatible VisionCB-6ULL-STD/IND, VisionCB-RT-STD

 **SoMLabs** | [www.somlabs.com](http://www.somlabs.com)

