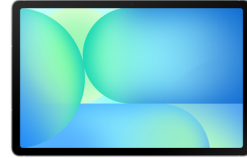


Samsung Galaxy Tab S10 FE (10,9")

Marke : Samsung

Produktfamilie: Galaxy Tab

Artikel-Code: SM-X520NZAREUB



Produktname : Galaxy Tab S10 FE (10,9")

- Viel sehen, viel erleben – Großes Display für Videos, Games und mehr
- Speicher und Akku satt - viel Platz und lange Laufzeit
- Lernen, Planen, Kreativsein – Notizen Assistent hilft dir dabei
- Bereit für nahezu alles – wasser- und staubgeschützt¹
- Handschrift trifft Technologie – dank mitgeliefertem S Pen

Galaxy Tab S10 FE (10,9")

Samsung Galaxy Tab S10 FE (10,9"). Bildschirmdiagonale: 27,7 cm (10,9"), Display-Auflösung: 2304 x 1440 Pixel. Interne Speicherkapazität: 128 GB. Prozessorfamilie: Samsung Exynos, Prozessor: 1580. Speicherkapazität: 8 GB. Auflösung Rückkamera (numerisch): 13 MP, Rückkamera-Typ: Einzelne Kamera, Auflösung Frontkamera (numerisch): 12 MP, Frontkamera. Top WLAN-Standard: Wi-Fi 6 (802.11ax). Unterstützte Navigationsfunktion (A-GPS). Integrierter Kartenleser. Gewicht: 497 g. Produktfarbe: Grau

Display		Design	
Display diagonal *	27.7 cm (10.9")	Device type *	Mobile tablet
Display resolution *	2304 x 1440 pixels	Form factor *	Slate
Panel type	TFT	Product colour *	Grey
HD type	WUXGA+	International Protection (IP) code	IP68
Display number of colours	16 million colours	Performance	
Processor		Assisted GPS (A-GPS) *	✓
Processor manufacturer *	Samsung	GLONASS	✓
Processor family *	Samsung Exynos	BeiDou	✓
Processor model *	1580	GPS (satellite)	✓
Processor cores	8	Galileo	✓
Processor boost frequency	2.9 GHz	Quasi-Zenith Satellite System (QZSS)	✓
Memory		Accelerometer	✓
Internal memory *	8 GB	Ambient light sensor	✓
Storage		Gyroscope	✓
Internal storage capacity *	128 GB	Hall sensor	✓
Card reader integrated *	✓	Electronic compass	✓
Compatible memory cards	MicroSD (TransFlash)	Position location *	✓
Maximum memory card size	2 TB	Security	
User memory	106.3 GB	Fingerprint reader	✓
Camera		Software	
Rear camera type *	Single camera	Platform *	Android
Rear camera resolution (numeric) *	13 MP	Battery	
Auto focus	✓	Battery capacity *	8000 mAh
Video recording	✓	Removable battery	✗
Maximum video resolution	3840 x 2160 pixels	Continuous video playback time	20 h
Resolution at capture speed	3840x2160@30fps	Power	
Front camera *	✓	USB Type-C charging port *	✓
Front camera resolution (numeric)	12 MP	USB Power Delivery (USB PD)	✓
Network		USB Type-C required charging power (min) *	15 W
Mobile network connection *	✗		
Bluetooth	✓		
Bluetooth version	5.3		

Network		Power	
Top Wi-Fi standard *	Wi-Fi 6 (802.11ax)	USB Type-C required charging power (max) *	45 W
Wi-Fi standards	802.11a, 802.11b, 802.11g, Wi-Fi 4 (802.11n), Wi-Fi 5 (802.11ac), Wi-Fi 6 (802.11ax)	Weight & dimensions	
Wi-Fi Direct	✓	Width	254.3 mm
Ports & interfaces		Depth	6 mm
USB 2.0 Type-C ports quantity	1	Height	165.8 mm
Headphone connectivity	USB	Weight	497 g
		Packaging content	
		Stylus pen	✓
		AC adapter included *	✗



8806097195740

Disclaimer. The information published here (the "Information") is based on sources that can be considered reliable, typically the manufacturer, but this Information is provided "AS IS" and without guarantee of correctness or completeness. The Information is only indicative and can be changed at any time without notification. No rights can be based on the Information. Suppliers or aggregators of this Information do not accept any liability with regard to the content of (web)pages and other documents, including its Information. The publisher of the Information can not be held liable for the content of 3rd party websites that are linking this Information or are linked to from this Information. You as the User of the Information are solely responsible for the choice and usage of this Information. You are not entitled to transfer, copy or otherwise multiply or distribute the Information. You are obliged to follow the directions of the copyright owner(s) with regard to the use of the Information. Exclusively Dutch law is applicable. With regard to price and stock data on the site, the publisher followed a number of starting points, which are not necessarily relevant for your private or business circumstances. Therefore, the price and stock data are only indicative and are subject to changes. You are personally responsible for the way you use and apply this information. As a user of the Information or sites or documents in which this Information is included, you will adhere to standard fair use including avoidance of spamming, ripping, intellectual-property violations, privacy violations, and any other illegal activity.

Publication date: 15-APR-2025. Prints or copies of Information are only valid on the printed Publication date