

DTX 1500 BASIC ATEX model is a dust collector equipped with a 2.2 kW centrifugal fan and a stellar polyester filter and suitable for use in environments with a potentially explosive atmosphere, is characterised by a high air flow rate and low depression. It is suitable for all environments where suspended volatile dust is present.

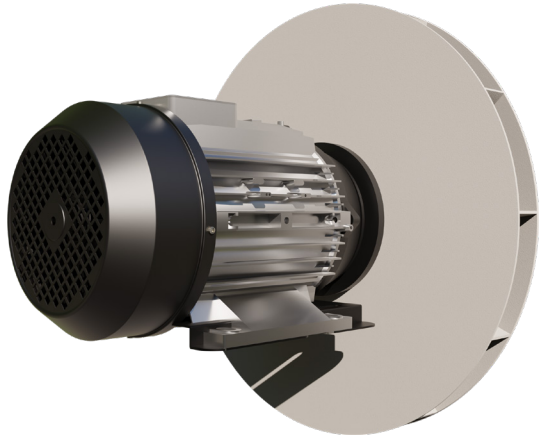
DTX 1500 ATEX 22 MARKING → II 3GD Ex dc h IIB T3 Gc - Ex h tc IIIC T 135°C Dc IP65

TECHNICAL FEATURES

DTXLINE BASIC

MODELS	DTX 1500 BASIC ATEX
MOTORIZATION	Centrifugal fan
POWER	2,2 kW
VOLTAGE	400 V
FREQUENCY	50 Hz
AMPERAGE	16 A
AIRFLOW	1500 m ³ /h
DEPRESSION	34 mBar
Ø NOZZLE	Tangential Ø 120 mm
BODY DIAMETER	Ø 460 mm
DIMENSIONS	80x66x168 cm
WEIGHT	87 Kg
FILTERING SYSTEM	DTX 1500 BASIC ATEX
FILTER TYPE	Stellar polyester
PRIMARY FILTER- SURFACE	30.000 cm ²
FILTER MEDIA	L
FILTER CLEANING	Manual shaking
COLLECTION SYSTEM	DTX 1500 BASIC ATEX
CAPACITY	Barrel 75l





◀ Motorization with centrifugal fan



◀ ATEX Zone 2-22 3GD certified



◀ Easy barrel release system

FINE DUST

DTX 1500 BASIC ATEX

DTXLINE

Tangential inlet ▶

In addition to the barrel, all Coyusco models are made in AISI 304 stainless steel ▶

