

SMART 235 D is a single-phase industrial vacuum cleaner with 2 motors, the ideal model to entrust any type of general cleaning of your company.

Compact, sturdy and trolley mounted for enhanced maneuverability, it is very practical even in the smallest surface areas, facilitating routine cleaning work.

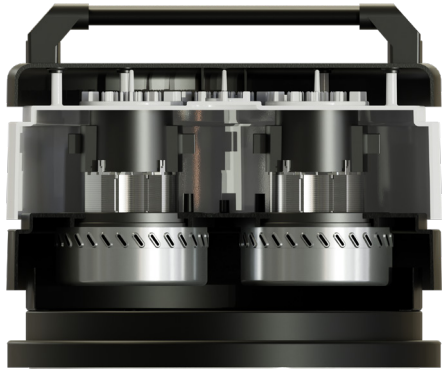
Thanks to its effectiveness, the cleaning times are reduced, benefiting in terms of time and costs.

TECHNICAL FEATURES



MODELS	235MD	235HD
MOTORIZATION	n°2 By-pass	n°2 By-pass
POWER	2200 W	2200 W
VOLTAGE	230 V	230 V
FREQUENCY	50/60 Hz	50/60 Hz
AMPERAGE	9,6 A	9,6 A
AIRFLOW	340 m³/h	340 m³/h
DEPRESSION	230 mBar	230 mBar
Ø NOZZLE	Tangential Ø 60 mm	Tangential Ø 60 mm
BODY DIAMETER	Ø 370 mm	Ø 370 mm
DIMENSIONS	65x50x111 cm	65x50x111 cm
WEIGHT	42 Kg	42 Kg
FILTERING SYSTEM	235MD	235HD
FILTER TYPE	Cartridge	Cartridge
PRIMARY FILTER - SURFACE	9.000 cm²	9.000 cm²
FILTER MEDIA	M Conductive	HEPA+PTFE
SECONDARY FILTER	NO	NO
FILTER CLEANING	Semi automatic - Push button	Semi automatic - Push button
COLLECTION SYSTEM	235MD	235HD
CAPACITY	Barrel 35l	Barrel 35l





◀ 2 By-pass motors



◀ Head with integrated semi-automatic filter cleaning system. Activated by push button.



◀ Cartridge filters available with conductive M or HEPA filter media

◀ Filter protection to optimize the cyclonic effect, lowering air velocity towards the bottom, increasing filtering efficiency and avoiding premature clogging of the filter. It also acts as a protection from abrasive materials or liquids, keeping the filter dry.

DUST

SMART 235D

SLINE

Tangential inlet ▶



Easy system for undocking the bin ▶

