
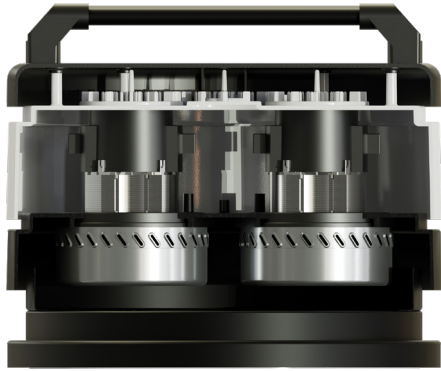


SMART 235 WD is an extremely compact single-phase wet / dry vacuum cleaner with 2 motors capable of sucking up liquids without having to remove the dust filter which is always mounted. Another innovative solution for the aspiration of liquids consists in the presence of an electric float, which allows the automatic shutdown of the aspirator when the maximum level is reached. The possibility of aspirating liquids does not affect the performance of dust aspiration: a class M filter is provided as standard, as well as a semi-automatic system for cleaning the filter. Its maneuverability, combined with its compactness, allows it to be easily moved even in the smallest places, facilitating routine cleaning work.

TECHNICAL FEATURES


MODELS	235WD 
MOTORIZATION	n°2 By-pass
POWER	2200 W
VOLTAGE	230 V
FREQUENCY	50/60 Hz
AMPERAGE	9,6 A
AIRFLOW	340 m³/h
DEPRESSION	230 mBar
Ø NOZZLE	Tangential Ø 60 mm
BODY DIAMETER	Ø 370 mm
DIMENSIONS	65x50x111 cm
WEIGHT	42 Kg
FILTERING SYSTEM	235WD
FILTER TYPE	Cartridge
PRIMARY FILTER - SURFACE	9.000 cm²
FILTER MEDIA	M Conductive
SECONDARY FILTER	NO
FILTER CLEANING	Semi automatic - Push button
COLLECTION SYSTEM	235WD
CAPACITY	Barrel 35l





◀ 2 By-pass motors



◀ Head with integrated semi-automatic filter cleaning system. Activated by push button.



◀ Cartridge filters available with conductive M or HEPA filter media

◀ Filter protection to optimize the cyclonic effect, lowering air velocity towards the bottom, increasing filtering efficiency and avoiding premature clogging of the filter. It also acts as a protection from abrasive materials or liquids, keeping the filter dry.



Tangential inlet ▶



▶ Electric float sensor with break-proof connection