

The SMART 240 WD professional vacuum cleaner is the first professional vacuum cleaner capable of sucking up liquids without having to remove the dust filter


which always remains mounted. Another innovative solution for the aspiration of liquids consists in the presence of an electric type float, which allows the automatic shutdown of the aspirator when the maximum level is reached.

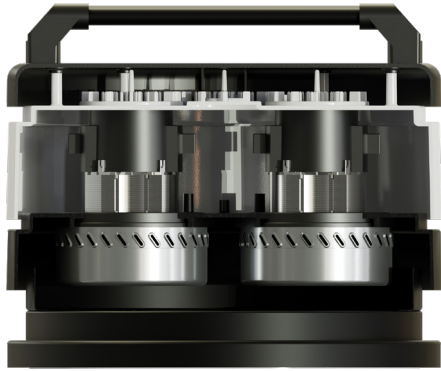
The possibility of the aspirator for liquids does not affect the performance of dust aspiration, in fact this aspirator is equipped with a class M filter, and, as standard, a semi-automatic system for cleaning the filter. All these features allow the adaptability of this vacuum cleaner to various sectors, from construction to the food or pharmaceutical industry.



TECHNICAL FEATURES



MODELS	240WD 
MOTORIZATION	n°2 By-pass
POWER	2200 W
VOLTAGE	230 V
FREQUENCY	50/60 Hz
AMPERAGE	9,6 A
AIRFLOW	340 m³/h
DEPRESSION	230 mBar
Ø NOZZLE	Tangential Ø 60 mm
BODY DIAMETER	Ø 400 mm
DIMENSIONS	52x43x110 cm
WEIGHT	25 Kg
FILTERING SYSTEM	240WD
FILTER TYPE	Cartridge
PRIMARY FILTER - SURFACE	9.000 cm²
FILTER MEDIA	M Conductive
SECONDARY FILTER	NO
FILTER CLEANING	Semi automatic - Push button
COLLECTION SYSTEM	240WD
CAPACITY	Barrel 40l



◀ 2 By-pass motors



◀ Head with integrated semi-automatic filter cleaning system. Activated by push button.



◀ Cartridge filters available with conductive M or HEPA filter media

◀ Filter protection to optimize the cyclonic effect, lowering air velocity towards the bottom, increasing filtering efficiency and avoiding premature clogging of the filter. It also acts as a protection from abrasive materials or liquids, keeping the filter dry.



Tangential inlet ▶

Integrated liquid drain hose ▶

Large porthole for sight glass ▶

Electric float sensor with break-proof connection ▶

