

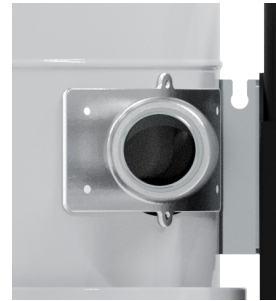
WT 75 and BT 75 models are the most popular turbine models as they enjoy excellent reliability thanks to the side channel turbine and are multipurpose for suction of any kind of debris but not recommended for fine dust. Their simplicity and veracity make them among the most popular models on the market.

**TECHNICAL FEATURES**

**HDCLINE BASIC**

MODELS	BT 751	WT 751	BT 753	WT 753
MOTORIZATION	Turbine	Turbine	Turbine	Turbine
POWER	2,2 kW	2,2 kW	3 kW	3 kW
VOLTAGE	230 V	230 V	400 V	400 V
FREQUENCY	50 Hz	50 Hz	50 Hz	50 Hz
AMPERAGE	16 A	16 A	6,7 A	6,7 A
AIR FLOW	320 m³/h	320 m³/h	320 m³/h	320 m³/h
DEPRESSION	200 mBar	200 mBar	250 mBar	250 mBar
MAX DEPRESSION	300 mBar	300 mBar	320 mBar	320 mBar
Ø NOZZLE	Tangential Ø 60 mm	Central Ø 70 mm	Tangential Ø 60 mm	Central Ø 70 mm
BODY DIAMETER	ø 460 mm	ø 460 mm	ø 460 mm	ø 460 mm
DIMENSIONS	80 x 63 x 165 cm	80 x 63 x 165 cm	80 x 63 x 165 cm	80 x 63 x 165 cm
WEIGHT	100 Kg	100 Kg	100 Kg	100 Kg
<b>FILTERING SYSTEM</b>				
FILTER TYPE	Stellar polyester	Stellar polyester	Stellar polyester	Stellar polyester
PRIMARY FILTER - SURFACE	22.000 cm² / 30.000 cm²	22.000 cm² / 30.000 cm²	22.000 cm² / 30.000 cm²	22.000 cm² / 30.000 cm²
STANDARD FILTER MEDIA	L	L	L	L
SECONDARY FILTER	OPT	OPT	OPT	OPT
FILTER CLEANING	Manual shaking	Manual shaking	Manual shaking	Manual shaking
<b>COLLECTION SYSTEM</b>				
CAPACITY	75 Liters	75 Liters	75 Liters	75 Liters
EXHAUST PIPE	NO	NO	NO	NO
EMPTYING LIQUIDS	Gravity - Optional	Gravity - Optional	Gravity - Optional	Gravity - Optional
LONGOPAC BARREL INTERCHANGEABILITY	NO	NO	NO	NO
<b>OTHER DEVICES</b>				
FLOATING	OPT Mechanical	OPT Mechanical	OPT Mechanical	OPT Mechanical
CYCLONE	OPT	OPT	OPT	OPT
TELESCOPIC HEIGHT	NO	NO	NO	NO

**BT 75 BASIC**



Models with tangential inlet

**WT 75 BASIC**



Models with central inlet





DUST AND LIQUIDS

BASIC WT 75 - BT 75

**DOCLINE**

Available in **ATEX** version

Tangential inlet



Easy system for undocking the barrel

### CONE

Compulsory for BT 75 in case of liquid suction

For WT 75 models the cone is required in case of installation of the mechanical float

