

integrity software

Instructions for Loading Evolution E-File v2.30

How to Load Evolution E-File 2.30

1. Download E-File 2.30 from the webpage provided

Step One

- ✓ Click on **E-File 2.30**

FTP root at 89.151.124.10

To view this FTP site in Windows Explorer, click **Page**, and then click **Open**

| | |
|--------------------|---|
| 03/11/2013 11:58AM | Directory E-File 2.30 |
| 03/11/2013 12:11PM | Directory Evolution 7.4 (UK only) |
| 03/29/2011 12:00AM | Directory Extras |
| 03/03/2010 12:00AM | Directory Integrity Teamviewer |
| 03/11/2013 12:17PM | Directory Old |
| 05/03/2011 12:00AM | Directory Patch |
| 03/19/2012 12:00AM | Directory USQL |

How to Load Evolution E-File 2.30

1. Download E-File 2.30 from the webpage provided

Step Two

- ✓ Click on [E-File230setup.exe](#)

FTP directory /E-File%202.30/ at 89.151.124.10

To view this FTP site in Windows Explorer, click **Page**, and then click **Open FTP**

[Up to higher level directory](#)

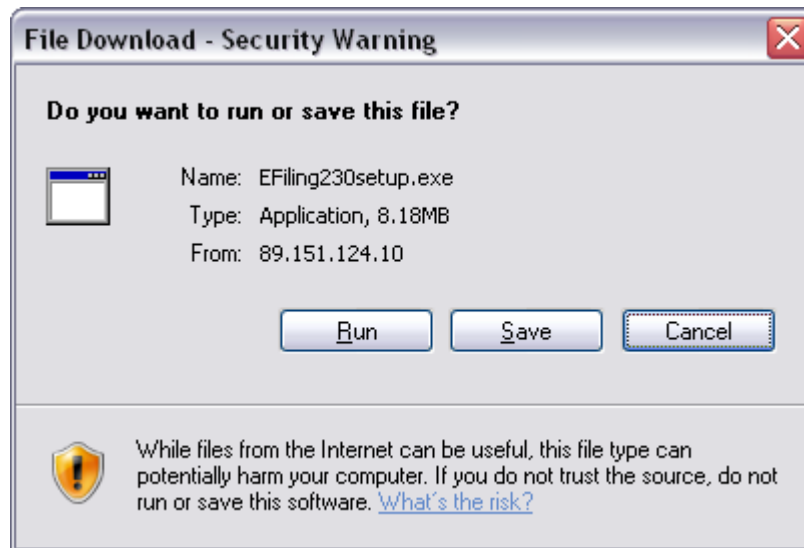
| | | |
|--------------------|-----------|-------------------------------------|
| 03/11/2013 12:14PM | Directory | Documentation |
| 03/11/2013 11:58AM | 8,579,807 | EFiling230setup.exe |

How to Load Evolution E-File 2.30

1. Download E-File 2.30 from the webpage provided

Step Three

✓ Select **Save** to save the file to your Desktop



How to Load Evolution E-File 2.30

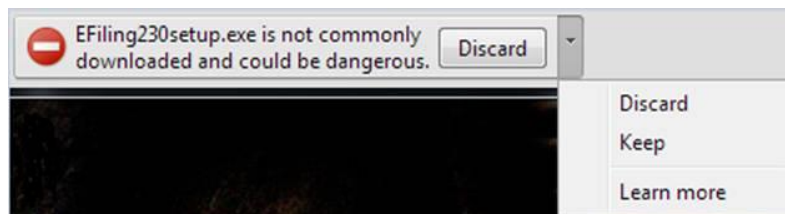
1. Download E-File 2.30 from the webpage provided

Please note

- Some Internet Browsers may display a different file download message to that shown above. An alternative screen is shown below and you should select to save the file



- Some Internet Browsers may automatically download the file into your "Downloads" directory rather than asking you to select a location to save the file.
- If you received a message that the file may be malicious, please select the option to "Keep" as shown below:



How to Load Evolution E-File 2.30

2. Installing Evolution E-File 2.30

Step One

- ✓ Run the saved **EFile230setup.exe** file from your Desktop or 'Downloads' folder
- ✓ Once the installation procedure is complete, the screen will close and return you to your Windows screen

How to Load Evolution E-File 2.30

2. Installing Evolution E-File 2.30

Step One

- ✓ Run the saved EFile230setup.exe file from your Desktop
- ✓ Once the installation procedure is complete, the screen will close and return you to your Windows screen

Step Two

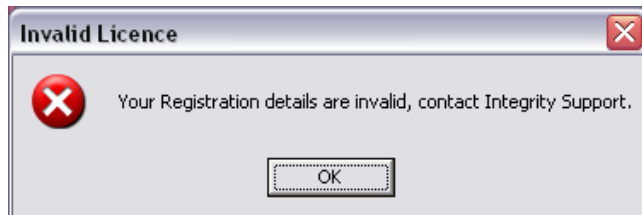
- ✓ Click the Integrity e-Filing icon on your desktop



How to Load Evolution E-File 2.30

3. Running Evolution E-File 2.30

- ✓ If you have not previously used Integrity E-File on this machine or the registration details have expired , the message below will appear – please contact Integrity Software Systems Support Department on 01522 887200 in order to obtain your Licence Activation Key.



How to Load Evolution E-File 2.30

3. Running Evolution E-File 2.30

- ✓ Once Integrity E-File opens please check that the version number in the bottom right hand corner reads 2.30

