

THE SYMPHONY OF
BHAVISHA HOMES
PRESENTING

MEADOWS
PHASE-2



RERA
APPROVED

www.bhavishahomes.com



A Name Rooted in Nature

“Meadows” perfectly represents the balance, by not just a place to live, but a lifestyle that embraces both comfort and the beauty of the natural world. It evokes images of open, green spaces filled with the soothing rustle of grasses and the gentle hum of nature. This serene imagery reflects our vision of creating a peaceful haven for our residents, where they can escape the hustle and bustle of urban life and find a sanctuary in the city.





DISCOVER THE ALLURE OF MEADOWS LUXURY
APARTMENTS AND ELEVATE YOUR LIVING
EXPERIENCE TO NEW HEIGHTS.





LEGENDS

- 1. Outdoor Gym
- 2. Badminton Court
- 3. Swimming Pool with Kids Pool
- 4. Children Play Area
- 5. Amphitheater
- 6. Skating Rink
- 7. Landscaped Garden Area
- 8. Cricket Pitch
- 9. Basketball Court
- 10. Mini Forest Area
- 11. Indoor Gym
- 12. Indoor Games
- 13. Party Hall
- 14. Transformer Yard
- 15. STP

No. of Flats	88 Flats
No. of Floors	G+3 Floors
Parking	Stilt Floor
Lifts	2



GROUND FLOORPLAN





TYPICAL FLOORPLAN





FLOOR PLAN & ISOMETRIC VIEW

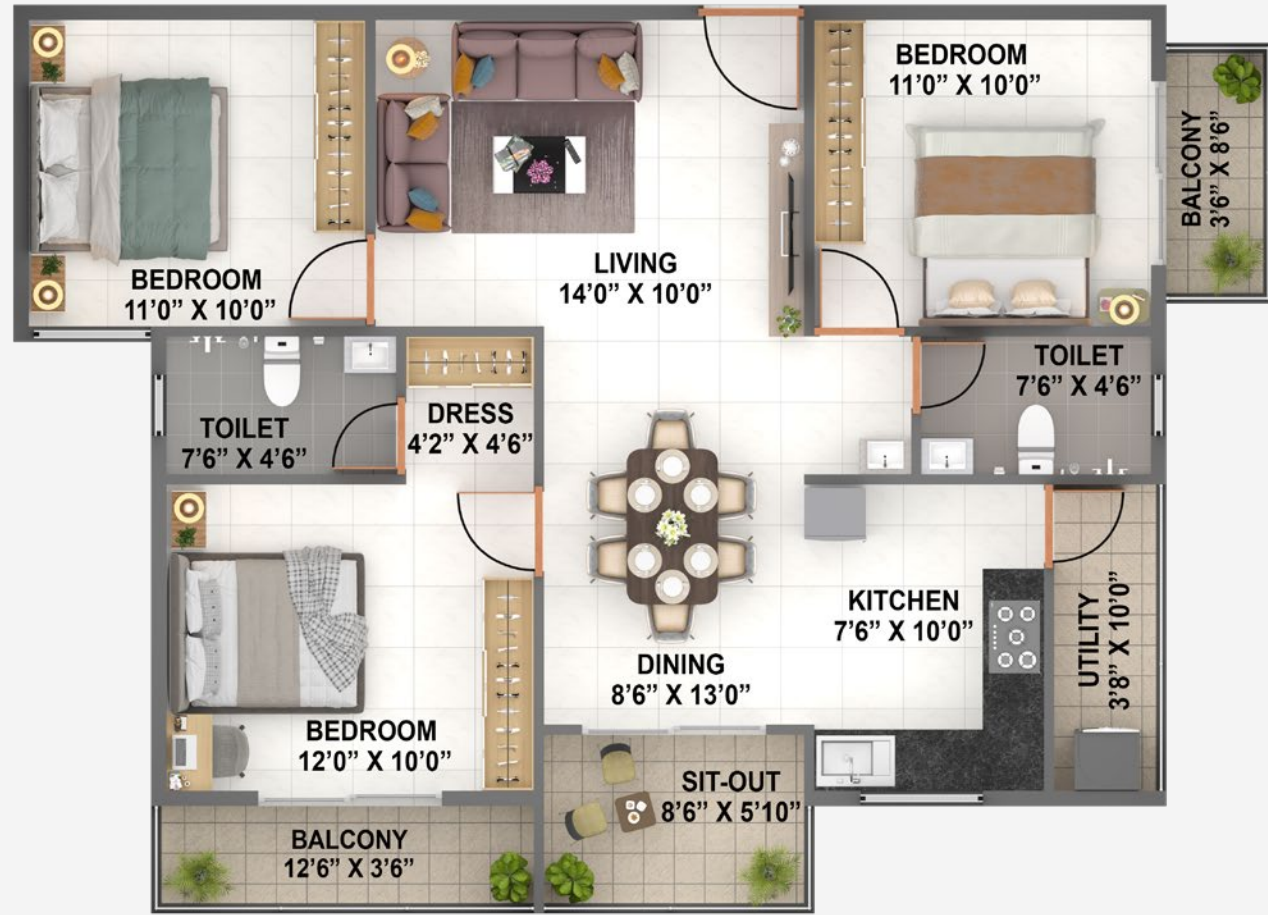


Flat No.	
Ground Floor	1,6,11,15,20
Typical Floor	1,6,11,15,20
Type	3 BHK
Facing	North
Carpet Area	921 Sft
SBA	1247 Sft



Flat No.	
Typical Floor	2,7,12,16,21
Type	3 BHK
Facing	North
Carpet Area	934 Sft
SBA	1266 Sft



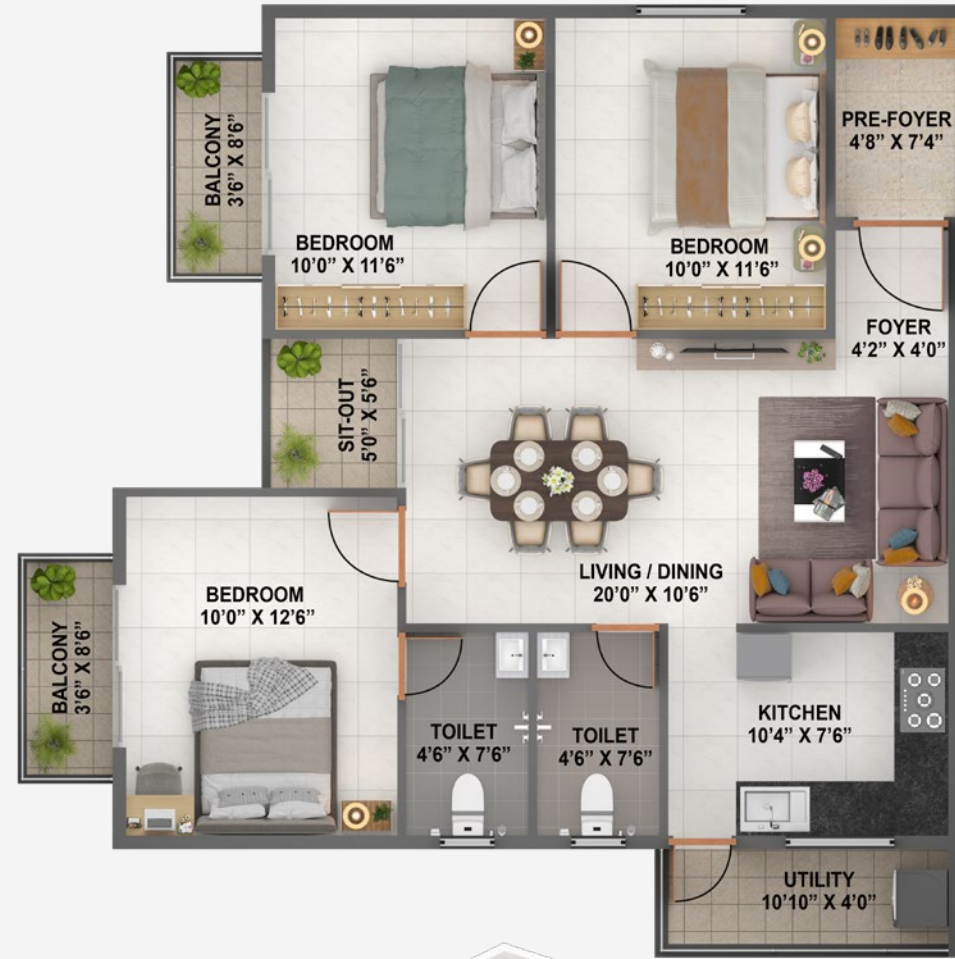


Flat No.	3
Typical Floor	3
Type	3 BHK
Facing	North
Carpet Area	948 Sft
SBA	1271 Sft



Flat No.	4,5,8,9,10,13,14,17,18,19
Typical Floor	4,5,8,9,10,13,14,17,18,19
Type	2 BHK
Facing	North
Carpet Area	692 Sft
SBA	933 Sft





Flat No.	22
Typical Floor	22
Type	3 BHK
Facing	North
Carpet Area	907 Sft
SBA	1211 Sft



Flat No.	2,7,12,16
Ground Floor	2,7,12,16
Type	3 BHK
Facing	North
Carpet Area	934 Sft
SBA	1266 Sft
Private Terrace	60 Sft



Flat No.	3
Ground Floor	3
Type	3 BHK
Facing	North
Carpet Area	948 Sft
SBA	1271 Sft
Private Terrace	59 Sft



Flat No.	4,8,17
Ground Floor	4,8,17
Type	2 BHK
Facing	North
Carpet Area	692 Sft
SBA	933 Sft
Private Terrace	100 Sft



Flat No.	21
Ground Floor	21
Type	3 BHK
Facing	North
Carpet Area	934 Sft
SBA	1266 Sft
Private Terrace	130 Sft



Flat No.	5,9,10,13,14,18,19
Ground Floor	5,9,10,13,14,18,19
Type	2 BHK
Facing	North
Carpet Area	692 Sft
SBA	933 Sft
Private Terrace	52 Sft



Flat No.	22
Ground Floor	22
Type	3 BHK
Facing	North
Carpet Area	907 Sft
SBA	1211 Sft
Private Terrace	59 Sft



Endless Amenities

Indulge in a wealth of amenities designed to enhance your lifestyle. From our fitness center to our inviting outdoor spaces, every corner of Meadows is crafted to cater to your every need.



LANDSCAPE GARDEN



PARTY HALL



MINI FOREST



INDOOR & OUTDOOR GYM



BADMINTON COURT



BASKET BALL COURT



INDOOR GAMES



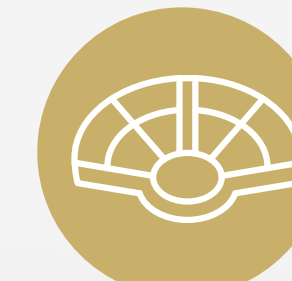
SWIMMING POOL WITH KIDS POOL



CRICKET PRACTICE PITCH



ENTRY FEATURE



AMPHITHEATER



CHILDREN PLAY AREA



SKATING RINK



24/7 SECURITY WITH CCTV



STP



24/7 POWER BACKUP



RAIN WATER HARVESTING



SPECIFICATION

Structure

- R.C.C Framed structure with M-25 grade concrete and Fe 500 grade TMT steel, designed as per relevant BIS codes for Earth Quake Resistance (Seismic zone-II) structurally efficient systems implemented

Walls

- Wall masonry: 6" and 4" solid cement blocks
- Internal walls with 4" Solid concrete blocks

Plastering

- All internal walls and ceiling plastered and painted with emulsion.
- Exterior walls painted with weather proof external paint

Doors

- Main entrance door and Bedroom doors are engineered wood door and frame manufacturing door

Windows

- The three track powder coated Aluminium sliding windows with mosquito mesh and safety grills

Flooring

- Polished vitrified tiles flooring with 3" skirting in drawing, kitchen, dining and bedrooms
- Anti-skid ceramic tiles for balconies and utilities

Toilets

- Anti-skid ceramic tiles flooring and Glazed ceramic tiles dadoing up to 7'0".
- Hindware/ Parryware or equivalent make ISI CP and Sanitary Fittings

Plumbing

- 24hrs Hot and cold water supply lines of CPVC or Equivalent

Electrification

- Concealed copper wiring and modular switches with adequate power points for light, fan, geyser and exhaust fan

Communication

- Telephone and TV points in living room

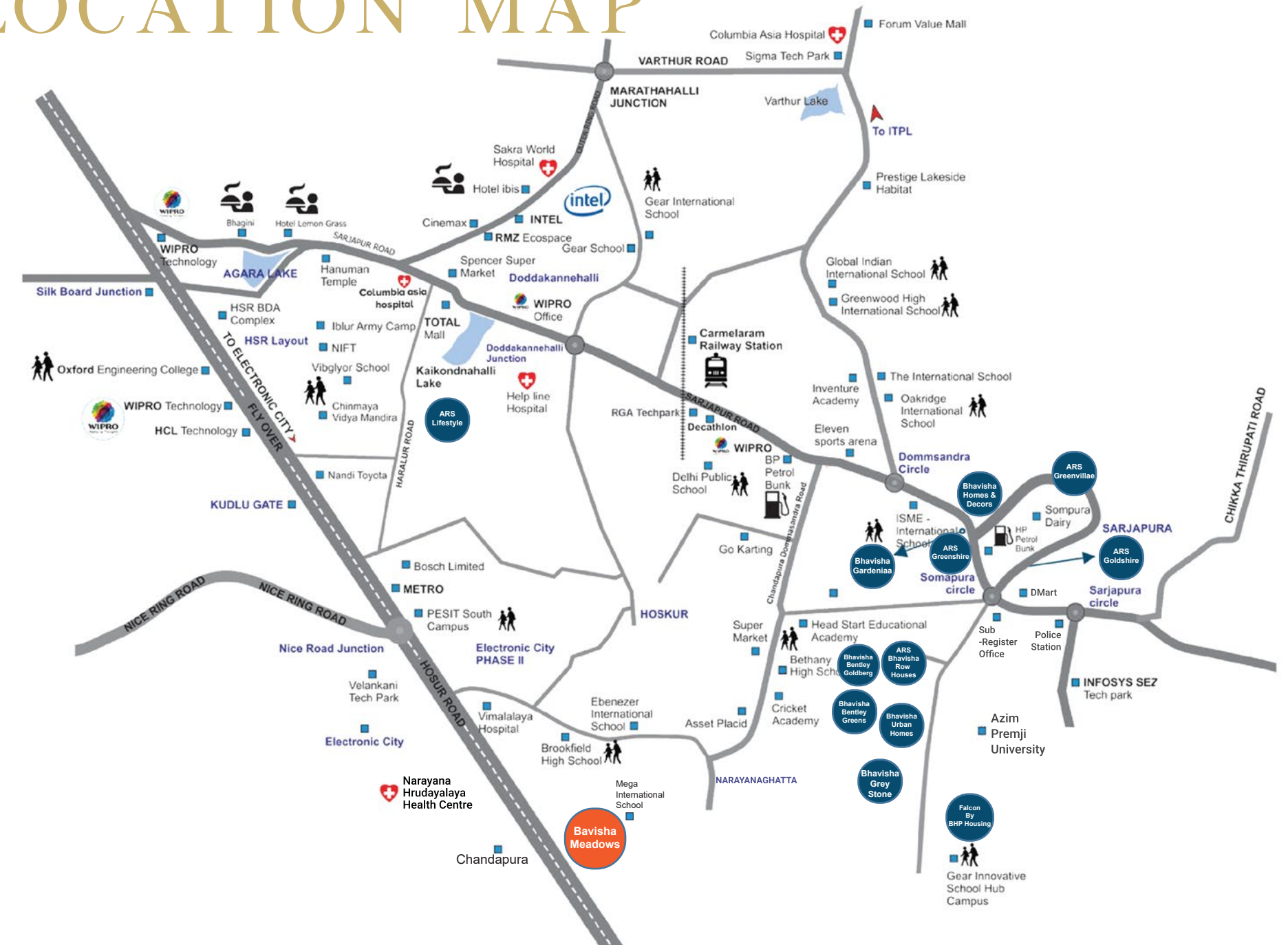
Generator

- Power back-up provided with load controller for each flat Additional power back-up for water pump and common area lightings

Lift

- Lift with a capacity of 10 passengers of reputed make

LOCATION MAP



TECH PARKS

Infosys (11 KM)
Wipro (9 KM)
HCL Technologies (7 KM)
Tech Mahindra (9 KM)

HOSPITALS

Narayana Hrudayalaya (3.5 KM)
Sparsh Hospital (3 KM)
Columbia Asia Hospital (19 KM)
Athreya Hospital (2.2 KM)

SCHOOLS & COLLEGES

Manipal International School (300 Mts)
Edify School (6.3 KM)
Ebenezer International School (6 KM)
Alliance University (10 KM)
Oxford Medical College Hospital (6.5 KM)

CONNECTIVITY & SUPERMARKETS

Old Chandapura Bus Stand (400 Mts)
Bommasandra Metro Station (3 KM)
Hosur Airport (22 KM)
D-Mart (3 KM)



BHAVISHA PROPERTIES



#001, 3rd Floor, Sy No.55/1, Yamare,
Sarjapura Road, Bengaluru,
Karnataka- 562125



bavishaproperties@gmail.com



www.bavishahomes.com