



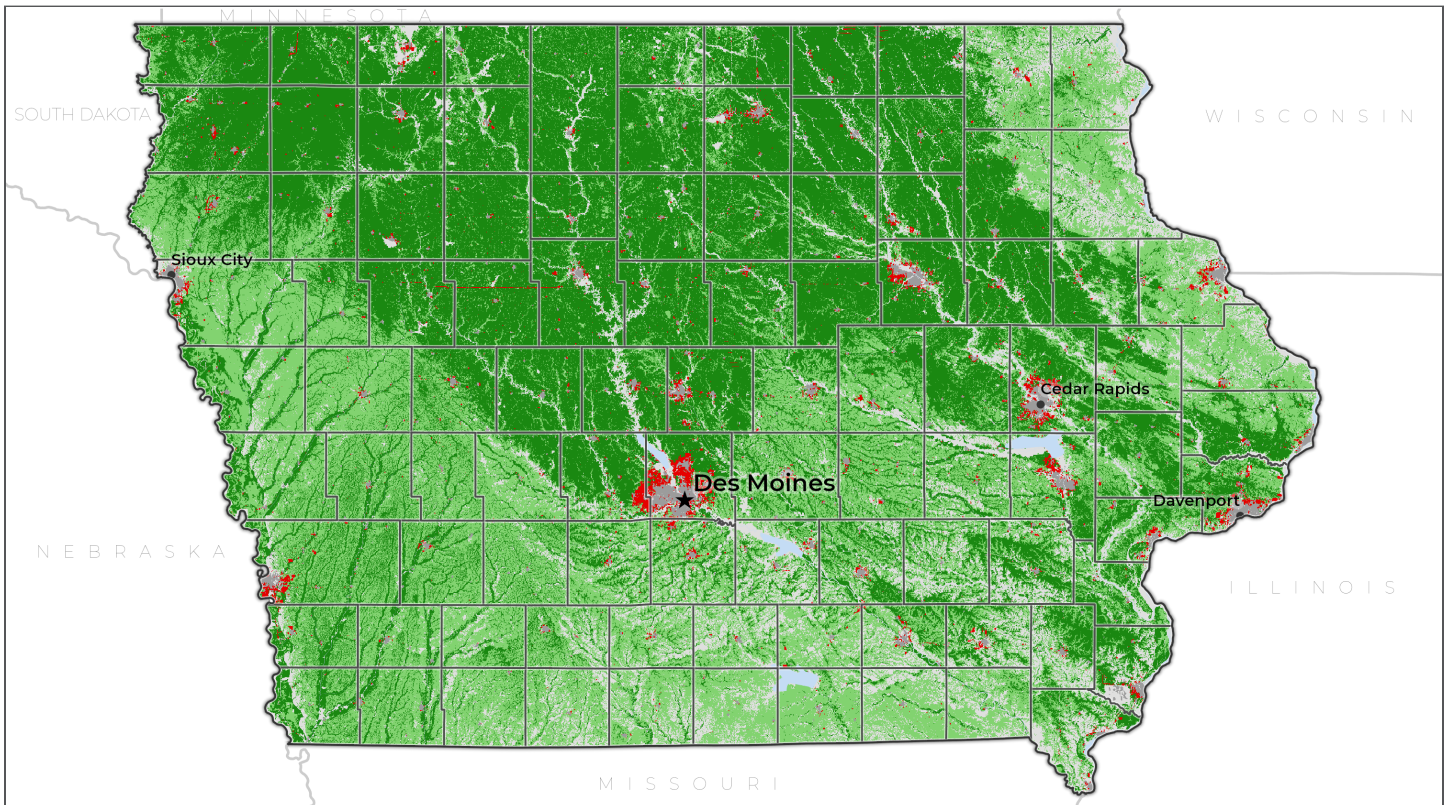
THE STATE OF THE STATES

Agricultural Land Conversion Highlight Summary






Iowa

Farms Under Threat: The State of the States mapped agricultural land conversion and evaluated state policy responses. The spatial analysis identified the extent, diversity, and quality of each state's agricultural land—and where this land has been converted to both urban and highly developed (UHD) and low-density residential (LDR) land uses.

AGRICULTURAL LAND CONVERSION 2001-2016



Conversion of non-federal farmland to UHD and LDR land uses from 2001-2016. The threat to working farms and ranches is pervasive, often claiming the most productive, versatile, and resilient lands.

 Conversion of agricultural land to UHD and LDR land uses	<p>Farmland* that is:</p>  Above state median PVR**  Below state median PVR	 Urban areas  Federal, forest, and other lands	<p>*Farmland is composed of cropland, pastureland, and woodland associated with farms.</p> <p>** Our productivity, versatility, and resiliency (PVR) index helps identify high-quality agricultural land (see page 2).</p>
--	---	---	--

RELATIVE CONVERSION THREAT

LOW

Iowa scored among the lowest states for the conversion of agricultural land to urban and highly developed (UHD) and low-density residential (LDR) uses.

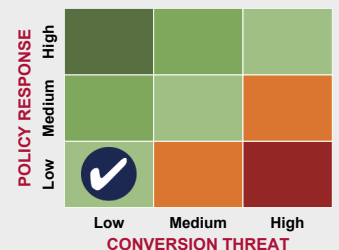
RELATIVE POLICY RESPONSE

LOW

Iowa scored among the lowest states for policies and programs that protect agricultural land from development, promote farm viability, and facilitate the transfer of agricultural land.

HOW IS THIS STATE DOING?

Iowa is in a green box because its policy response is aligned with its conversion threat, relative to other states. Learn more at www.farmland.org/farmsunderthreat



DEVELOPMENT THREATENS IOWA'S AGRICULTURAL LAND

From 2001-2016, 114,200 acres of agricultural land were developed or compromised.

Iowa's farmland and rangeland was converted to:

- **Urban and highly developed (UHD)** land use, including commercial, industrial, and moderate-to-high-density residential areas.
- **Low-density residential (LDR)** land use, where scattered large lot development fragments the agricultural land base and limits production, marketing, and management options for the working farms and ranches that remain.

LDR PAVES THE WAY FOR FURTHER DEVELOPMENT

Agricultural land in LDR areas in 2001 was

66 TIMES MORE LIKELY

to be converted to UHD by 2016, compared to other agricultural land.

75,400 acres

66%

of conversion was to UHD

38,800 acres

34%

of conversion was to LDR

CONVERSION AFFECTED ALL TYPES OF AGRICULTURAL LAND



CROPLAND: 77,200 acres
PASTURELAND: 31,400 acres
WOODLAND: 5,600 acres

IOWA'S BEST AGRICULTURAL LAND IS UNDER THREAT

We used our unique **PVR index**, which quantifies the productivity, versatility, and resiliency of agricultural land, to identify:

1. **Iowa's best land**, which has PVR values above the state median, and
2. **Nationally Significant land**, which is the country's best land for long-term production of food and other crops. **83%** of Iowa's agricultural land, or **25,752,100 acres**, falls in this category.*

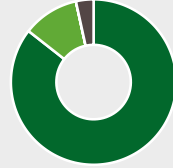
Protecting high-PVR land is critical for the long-term sustainability of agriculture, yet from 2001-2016:

- ▶ **52,500 acres** of Iowa's best land were converted to UHD and LDR uses.
- ▶ **74,400 acres** of Iowa's Nationally Significant land were converted.

*These two categories overlap and the same land may be included in both.

What's at stake?

- ▶ **30,983,600 acres of agricultural land remain¹**



CROPLAND: 26,517,400 acres
PASTURELAND: 3,401,600 acres
WOODLAND: 1,064,600 acres

- ▶ **\$29.0 billion earned from cash receipts in 2017²**
 - \$35.8 million from local food³
 - \$10.3 billion from agricultural exports⁴

- ▶ **114,200 acres were converted—enough land to generate \$107 million in annual revenue²**

- ▶ **Iowa's top 3 agricultural products:²**
 - Corn \$8.5 billion
 - Hogs \$7.8 billion
 - Soybeans \$5.1 billion

- ▶ **145,400 producers and 73,600 farm laborers on 86,100 farms²**

- ▶ **4 times as many producers over 65 as under 35 years old²**

1. Farms Under Threat 2016

2. National Agricultural Statistics Service 2017

3. Sold directly to consumer and intermediate outlets, NASS 2017

4. Economic Research Service 2017



Farms Under Threat is American Farmland Trust's multi-year initiative to document the status of and threats to U.S. farmland and rangeland and to identify policy solutions to ensure the protection and conservation of America's diverse agricultural landscape. For more information about AFT, visit www.farmland.org. If you have any questions about the analysis methods or would like access to data, please contact AFT's Farmland Information Center: www.farmlandinfo.org or (800) 370-4879.



Explore our interactive maps at www.farmland.org/farmsunderthreat