



STYLEGUARD XD[®] FLOOR LINERS

Bold. Innovative. Style.

At ARIES, we stand for bold attitude and innovative style. Whether you're proving yourself on the trail or conquering the urban jungle, our desire is to give you something that no one else can offer, something that allows you to stand out with your own unique style.

This desire has shaped and refined ARIES as a recognized name for truck and Jeep accessories. From our unique AdvantEDGE™ series and extensive Jeep Wrangler line, to our Team ARIES Pro Builder Program, we continue to be inspired by the bold attitude and style of our customers.

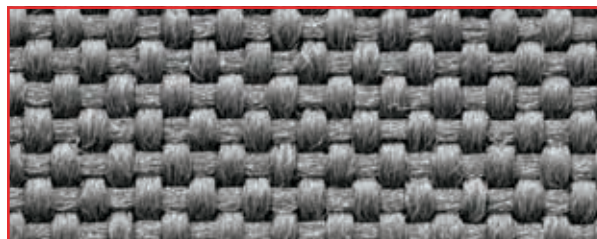
Sold / Installed By



SEAT DEFENDER™

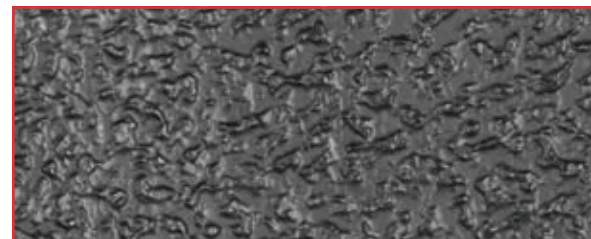
- Use-as-needed, universal design with dual-sided, non-skid protection
- Fast and easy to install, remove, clean and store
- 100% waterproof and machine washable (air dry only)
- Allows for side airbag deployment
- Maintains seat belt access (bench seat units may interfere with center shoulder strap)
- XL bench seat and cargo blanket also available

/ 600-denier terylene fabric



Durable, woven 600-denier terylene fabric keeps spills and dirt out and cleans up easily in the washing machine

/ Thermoplastic rubber (TPR)



Waterproof, thermoplastic rubber protects against spills and grips the seat for added safety and comfort



990090-RA
03/27/2019



ariesautomotive.com



**UNIQUE,
THREE-LAYER
CONSTRUCTION**

**PATENTED
ANCHORING
SYSTEM**

**LASER-
MEASURED
FIT**

STYLEGUARD XD® FLOOR LINERS

Engineered to be the perfect balance of style and durability, StyleGuard XD® floor liners are interior protection for the modern day. They are sleek, safe, easy to install and vehicle-specific.



Row 1
driver side

Key Features



Highly durable, three-layer construction for ultimate interior protection



Channeled surface and raised edges are designed to contain liquids and debris



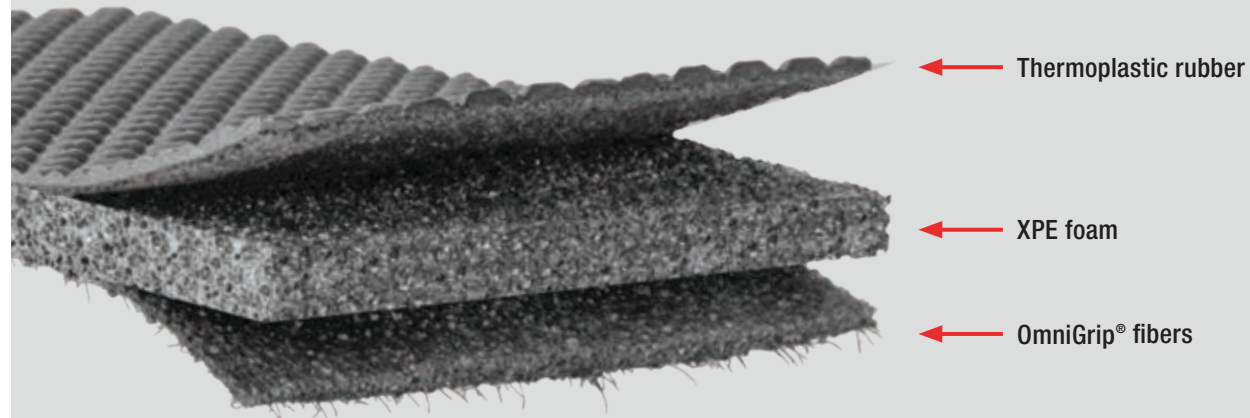
Laser-measured design for perfect, vehicle-specific contour



Lightweight construction for simple, drop-in installation and easy cleanup

Three Distinct Layers

- The top layer of finely textured thermoplastic rubber is strong, durable, wear-resistant and waterproof to stand up to scuffs, spills and more
- Thousands of patented OmniGrip® fibers prevent movement on any type of carpet
- The middle layer of semi-rigid cross-linked polyethylene foam is shock-absorbent, sound-insulating and thermostatic for a more comfortable ride



Row 1



Row 2



Cargo liner



UNIVERSAL CARGO LINER

- Highly durable, three-layer construction for dependable cargo floor protection



Trimnable design to fit all rear cargo areas for SUVs, CUVs and Jeeps