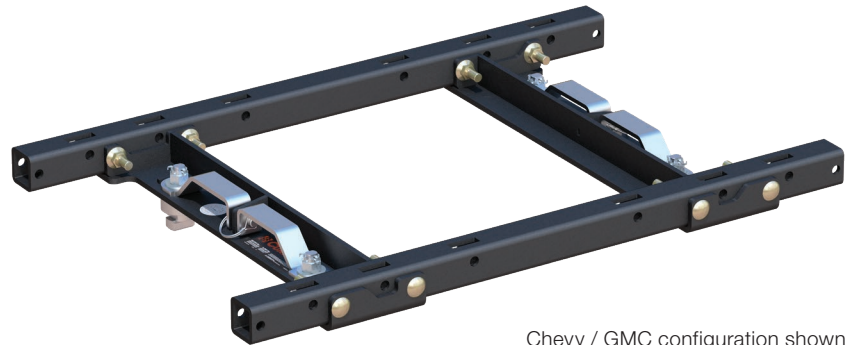


# OEM PUCK SYSTEM 5TH WHEEL ADAPTER W/ STANDARD RAILS

**DROP-IN  
INSTALL.**

**STANDARD  
RAILS.**

**TESTED  
TO J2638.**



Chevy / GMC configuration shown

## **PART# 16027**

The adapter provides a set of industry-standard 5th wheel rails to securely mount a CURT 5th wheel hitch or roller into the bed of your Ford, Chevy or GMC truck. It features a set of adjustable, quarter-turn anchors to quickly and easily drop into the pucks and provide a moveable platform for the 5th wheel coupling point.

- 25,000 lbs. of weight capacity (limited to lowest-rated towing component)
- Adapts CURT 5th wheel to fit Ford and Chevrolet / GMC puck systems (year varies by vehicle)
- Industry-standard rails accept most 5th wheel legs and rollers
- Quarter-turn anchoring system provides quick installation and removal
- Adjustable anchors to eliminate chocking between the legs and under-bed platform
- Tested for safety in accordance with SAE J2638
- Protected by a highly durable carbide black powder coat finish
- Limited lifetime warranty (one-year finish, one-year parts)

