

ENGINEERED FOR WORK, RATED FOR SAFETY

Durable. Functional. Dependable.

LUVERNE Truck Equipment stands for quality craftsmanship and hard work. We've been manufacturing in the USA since 1963.

We believe that honest, hardworking people deserve truck accessories that can keep up with their lifestyle. Whether they're raising a new generation on the farm or outfitting their fleet for the next big job, our products are designed for two things: functionality and reliability.

We're not about flash or flare because when it comes to honest work, only rugged, tested and established truck accessories hold up.

Sold / Installed By

**GRIP STEP™ BOARD
EXPANDED METAL TREADS**

Grip Step™ running boards are the ideal steps for work trucks and commercial vans. Their powder-coated construction is highly weather-resistant, and their unique metal treads offer several safety advantages. Grip Steps™ are also available in XL, SlimGrip™, rear step and hitch step configurations.



Expanded metal treads provide maximum traction and safety on the job, regardless of weather conditions



A large, comfortable surface to ensure confident footing and an ergonomic environment for drivers and workers

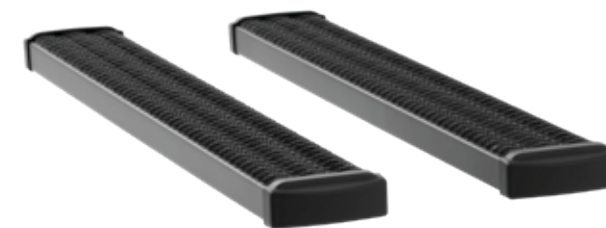


Dirt and debris are knocked off your boots and pass through the open treads, keeping the vehicle interior clean



**GRIP STEP™ 7"
RUNNING BOARDS**

- Fleet-approved, expanded metal treads for maximum traction and safety
- Powder-coated aluminum construction to be strong, lightweight and rust-free
- 7" wide stepping surface provides safe, comfortable entry and exit
- Open treads knock dirt and snow off boots to help keep the vehicle interior clean



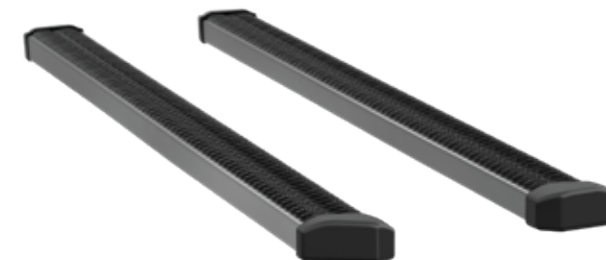
**MEGASTEP® 6 1/2"
RUNNING BOARDS**

- Nerf bar styling with the convenience of a full-length running board step
- Extruded aluminum core to be strong, lightweight and rust-free
- High-polish, 18-gauge stainless steel trim for a bright, clean finish
- 6-1/2" x 3" boards with 5" non-skid rubber treads for a safe, comfortable step



**SLIMGRIP™ 5"
RUNNING BOARDS**

- Sleek, rugged style and corrosion-resistant build for off-road or work trucks
- Expanded metal treads for maximum traction and safety
- Open treads knock dirt and snow off boots to help keep the vehicle interior clean
- Powder-coated aluminum construction to be strong, lightweight and rust-free



**O-MEGA II™ 6"
OVAL STEPS**

- Powder-coated aluminum construction with aggressive, modern style
- Aluminum step pads with circular treads for a long-lasting, non-skid step
- TPO plastic end caps can easily be painted for a customized look
- Available in textured black or silver powder coat finish



LUVERNE

**WORK TRUCK
PRODUCTS**



9920018-RC
04/28/2020



luvnetruck.com

© LUVERNE



2" TUBULAR GRILLE GUARDS

- Contoured horizontal tubes for signature vehicle logo reveal
- Polished stainless steel backing on the uprights maintains a finished look
- Rubber extrusions are securely bolted to the uprights for extra protection
- Available in black powder-coated or chrome-plated steel



Light Mounting Brackets

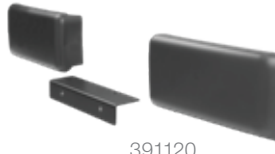
- Mounts aftermarket lights with a 1/2" stud to any 2" tube



390100

License Plate Bracket

- Solid mounting location to reposition the front license plate on 11 - 14 Ford F-150 EcoBoost



391120



TEXTURED RUBBER MUD GUARDS

- 3/8" thick rubber flaps protect with the right amount of flex
- High-polish, 18-gauge stainless steel plates resist corrosion and add style
- Easy to install with included corrosion-resistant mounting hardware
- Sold as pairs for front and rear

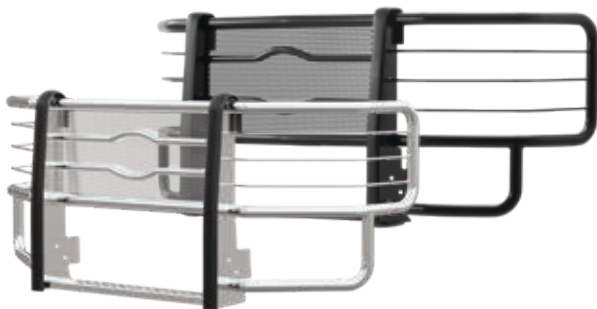


PROWLER MAX™ GRILLE GUARDS

- Heavy-gauge, punched steel screen provides extra grille protection
- Built-in 4" diamond tread step for easy access under the hood
- Contoured horizontal tubes for signature vehicle logo reveal
- Available in polished stainless steel or E-coat and black powder-coated steel

Prowler Max™ Winch Platform

- Tested to 16,500 lbs. straight-line pull
- Accepts most winch types
- Rust-resistant zinc and powder coat finish



RECEIVER HITCH STEPS

- Provides a convenient 26" step on the rear of the vehicle for accessing the cargo area
- Shank fits any 2" x 2" receiver tube opening (may interfere with rear step, if installed)
- Available in Grip Step™, MegaStep® and O-Mega II™ styles



TEXTURED RUBBER TOW GUARDS

- Convenient hitch-mounted system can be installed or removed as needed
- Full-width barrier offers a superior shield against rocks and other road debris
- Ball mount or other accessory shank required for installation
- Universal 72" width to fit most full-size pickups and SUVs

