



Tuff Guard® bumper guard and MegaStep® running boards



Tuff Guard® bumper guard and Grip Step™ running boards

LUVERNE

VAN FLEET PRODUCTS



CURT GROUP

Durable. Functional. Dependable.

LUVERNE stands for quality craftsmanship and hard work. We've been manufacturing in the USA since 1963.

We believe that honest, hardworking people deserve truck accessories that can keep up with their lifestyle. Whether they're raising a new generation on the farm or outfitting their fleet for the next big job, our products are designed for two things: functionality and reliability.

We're not about flash or flare because when it comes to honest work, only rugged, tested and established truck accessories hold up.

Call or email us today for your custom quote or to speak to a fleet specialist

IMPACT™ SHOCK-ABSORBING BUMPER STEP

- Designed to absorb rear impacts up to 5mph and avoid possible frame damage
- Ideal for delivery and cargo vans that frequently back into loading docks
- Spring-loaded shock-absorbers built into the mounting brackets
- Integrated 9-1/2" wide stepping surface with fleet-approved, expanded steel treads
- Assembled in the USA
- Available for Ford Transit, Ram ProMaster and Mercedes Sprinter vans



415358-571501



REAR STEPS

- Provides a convenient 54" step on the rear of the vehicle for accessing the cargo area
- Particularly useful for commercial vans that require frequent entry and exit
- Available in Grip Step™, MegaStep® and O-Mega II™ styles
- Available for Ford Transit, Ram ProMaster and Mercedes Sprinter vans



RECEIVER HITCH STEPS

- Provides a convenient 26" step on the rear of the vehicle for accessing the cargo area
- Shank fits any 2" x 2" receiver tube opening (may interfere with rear step, if installed)
- Available in Grip Step™, MegaStep® and O-Mega II™ styles



SEAT DEFENDER™

- Use-as-needed, universal design with dual-sided, non-skid protection
- Quickly install, remove, clean and store
- 100% waterproof and machine washable (air dry only)
- Also available for bench seats



Bucket seat

ARIES

Cargo area



9920028-RC
05/08/2020



luvnetruck.com

© LUVERNE

LUVERNE

PROFESSIONAL LOOK & STYLE

DEPENDABLE SAFETY

ASSEMBLED IN THE USA



Grip Step™ XL
running board



O-Mega II™ rear step
and running boards



RidgeStep™
running boards



MegaStep®
hitch step

GRIP STEP™ XL 9-1/2" RUNNING BOARD

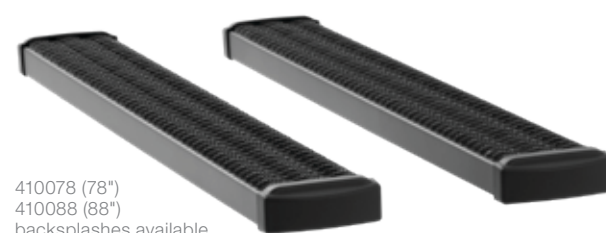
- Ultra-wide 9-1/2" step for ultimate comfort and functionality on cargo vans
- Fleet-approved, expanded steel treads for maximum traction and safety
- Reinforced, 7-gauge, laser-cut steel brackets
- Professional-grade, zinc-primed, textured black powder coat
- Fits the passenger-side only
- Available for Ford Transit, Ram ProMaster, Mercedes Sprinter and Nissan NV vans



495154 (54")

GRIP STEP™ 7" RUNNING BOARDS

- Fleet-approved, expanded metal treads for maximum traction and safety
- Powder-coated aluminum construction to be strong, lightweight and rust-free
- Open treads knock dirt and snow off boots to help keep the van interior clean
- Available for Ford Transit, Ram ProMaster, Mercedes Sprinter and Nissan NV vans



410078 (78")
410088 (88")
backsplashes available

MEGASTEP® 6 1/2" RUNNING BOARDS

- Extruded aluminum core to be strong, lightweight and rust-free
- High-polish, 18-gauge stainless steel trim for a bright, clean finish
- 6-1/2" x 3" boards with 5" non-skid rubber treads for a safe, comfortable step
- Available for Ford Transit, Ram ProMaster, Mercedes Sprinter and Nissan NV vans



570090 (88")
570098 (98")
backsplashes available

RIDGESTEP® 6-1/2" RUNNING BOARDS

- High-strength, all-steel construction with no plastic parts
- Stamped steel treads for a non-skid step that will never wear or crack
- Flat profile and 6-1/2" width provide a comfortable step
- Available for Ford Transit, Ram ProMaster and Mercedes Sprinter vans



ARIES

O-MEGA II™ 6" OVAL STEPS

- Powder-coated aluminum construction available in textured black or silver
- Aluminum step pads with circular treads for a long-lasting, non-skid step
- TPO plastic end caps can easily be painted for a customized look
- Available for Ford Transit, Ram ProMaster, Mercedes Sprinter and Nissan NV vans



570090 (88")
570098 (98")
backsplashes available

TUFF GUARD® GRILLE GUARD

- Powder-coated stainless steel construction for maximum corrosion resistance
- 3" diameter, 14-gauge stainless steel tube design for added vehicle protection
- Solid, bolt-on installation using pre-existing mounting points (some models may require minor drilling into plastic)
- Available for Ford Transit, Ram ProMaster and Mercedes Sprinter vans

