

# 9-1/2" GRIP STEP™ XL RUNNING BOARD

**ULTRA-WIDE  
9-1/2" STEP.**

**EXPANDED  
TREADS.**

**FLEET  
APPROVED.**



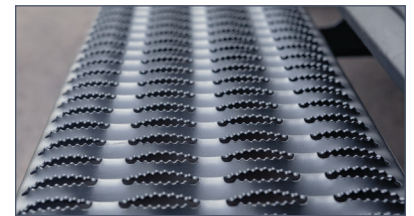
- Ultra-wide 9-1/2" step for ultimate comfort and functionality on cargo vans
- Fleet-approved, expanded steel treads for maximum traction and safety
- Reinforced, 7-gauge, laser-cut steel brackets to eliminate flexing and bending
- Professional-grade, zinc-primed, textured black powder coat to resist rust
- Open treads knock dirt off boots to help keep the van interior clean
- Rounded front corner to promote safety and avoid injuries and damage
- Zinc-primed, powder-coated brackets use stainless fasteners to secure board
- Fits the passenger-side only
- Kits include one board, brackets and hardware
- Made in Germany and finished in the USA
- Limited lifetime warranty

## High traction



Unlike plastic, the expanded metal treads provide maximum traction and safety on the job, regardless of weather conditions

## Extra comfort



9-1/2" width offers a large, comfortable surface to ensure confident footing and an ergonomic environment for drivers



# 9-1/2" GRIP STEP™ XL RUNNING BOARD

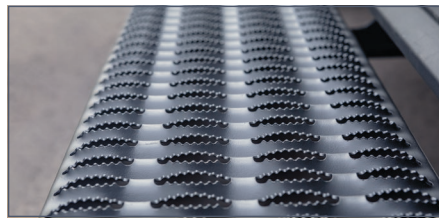


## High traction



Unlike plastic, the expanded metal treads provide maximum traction and safety on the job, regardless of weather conditions

## Extra comfort



9-1/2" width offers a large, comfortable surface to ensure confident footing and an ergonomic environment for drivers and workers

## Open treads



As drivers step up, dirt and debris are knocked off their boots and pass through the open treads, keeping the vehicle interior clean

Make / Model	Years	Foot Notes	Kits (Board and Brackets)	Kit Price	Board Only	Board Price	Brackets Only	Bracket Price	Mount Type
<b>Dodge</b>									
Sprinter 2500	07 - 09	1	495154-401800		495154		401800		Rocker
Sprinter 3500	07 - 09	1	495154-401800		495154		401800		Rocker
<b>Ford</b>									
Transit-150	15 - 19	1	495154-401801		495154		401801		Rocker
Transit-250	15 - 19	1	495154-401801		495154		401801		Rocker
Transit-350	15 - 19	1	495154-401801		495154		401801		Rocker
<b>Freightliner</b>									
Sprinter 2500	07 - 19	1	495154-401800		495154		401800		Rocker
Sprinter 3500	07 - 19	1	495154-401800		495154		401800		Rocker
<b>Mercedes-Benz</b>									
Sprinter 2500	10 - 19	1	495154-401800		495154		401800		Rocker
Sprinter 3500	10 - 19	1	495154-401800		495154		401800		Rocker
<b>Ram</b>									
ProMaster 1500	14 - 20	1	495154-401802		495154		401802		Rocker
ProMaster 2500	14 - 20	1	495154-401802		495154		401802		Rocker
ProMaster 3500	14 - 20	1	495154-401802		495154		401802		Rocker

1. Passenger sliding door only