

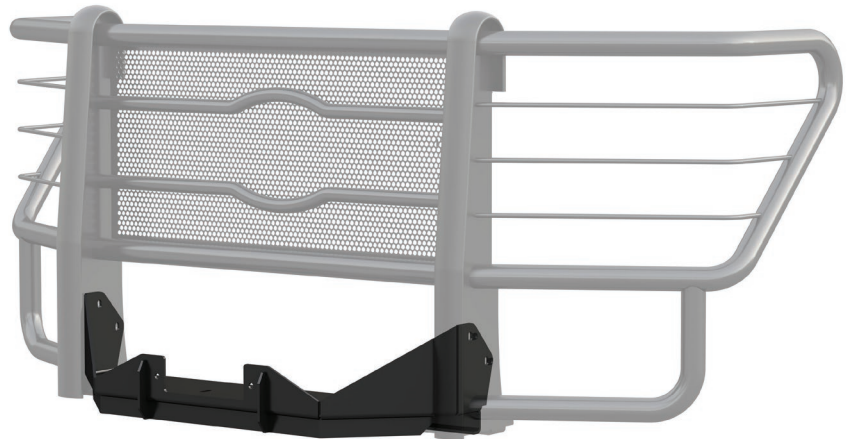
PROWLER MAX™ WINCH MOUNTING PLATFORMS



16.5K PULL RATING.

EASY RETROFIT.

FITS MOST WINCHES.



Part #	Make	Model	Year
321516	Chevrolet / GMC	Silverado / Sierra 2500 / 3500	15 - 18
321036	Dodge	Ram 1500	09 - 10
321726	Ford	F-250 / F-350 / F-450 / F-550	17 - 18
321126	Ford	F-250 / F-350 / F-450 / F-550	11 - 16
321036	Ram	1500 / 2500 / 3500	11 - 18

These simple winch tray attachments outfit the LUVERNE Prowler Max™ grille guard for hard work on the jobsite or on the trail. They are tested to 16,500 lbs. straight-line pull and feature standard mounting points to accept most types of winches.

All Prowler Max™ winch mounting platforms are made vehicle-specific for a custom fit, and they install easily with a retrofit design. They mount onto the existing grille guard without any tedious modifications.

- Tested and rated for 16,500 lbs. straight-line pull
- Easy, retrofit design to fit existing grille guards (Compatible with Prowler Max™ grille guard only)
- Standard mounting holes to accept most types of winches
- Highly durable, rust-resistant zinc prime and carbide black powder coat finish

