

# LUVERNE®

## IMPACT™ BUMPER

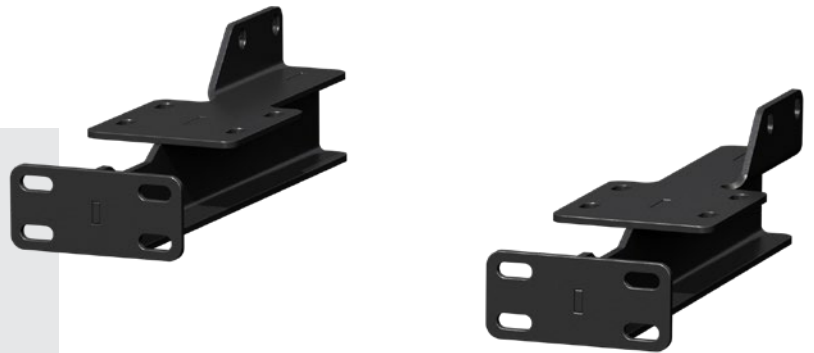
### WITH FIXED BRACKETS



### HEAVY-DUTY, SOLID STEEL CONSTRUCTION

Impact provides a 9-1/2" high-traction step at the rear of your vehicle and features a dependable, heavy-duty construction of solid, reinforced steel. The step allows for easier access to the cargo area, making it especially useful for delivery drivers.

The fixed, solid steel mounting brackets are an economical option for installation (shock-absorbing brackets also available). Each set of brackets is made vehicle-specific for a custom fit.



**Be legendary.**

Integrated, expanded steel, 9-1/2" wide stepping surface for easier rear vehicle access and maximum traction and safety

**FLEET-APPROVED FOR SAFETY**

**Maximum traction and safety**

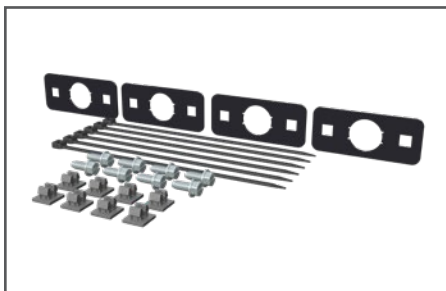


Integrated, expanded steel, 9-1/2" wide stepping surface for easier rear vehicle access and maximum traction and safety

**Additional Features**

- Fixed, rigid design constructed from high-strength steel (no shock-absorption)
- Ideal for delivery vans and cargo vans
- Reinforced, heavy-wall steel tube construction for superior strength
- Dual A-coat with gloss black powder coat finish for exceptional rust resistance
- Universal design with vehicle-specific mounting brackets for a custom fit
- Designed to accept parking sensors (relocation kit required)
- Limited lifetime warranty

**Aftermarket sensor kit**



- Allows parking sensor operation with Impact™ bumper installed
- Enables relocation of 1" diameter aftermarket sensors
- Application-specific sensors also available

**Rubber bumper strips**



- Fits pre-drilled holes on the Impact™ bumper step
- Pre-drilled holes accept 1/4" hardware
- Tough black rubber construction
- Hardware included (select models)

**Reflective tape**



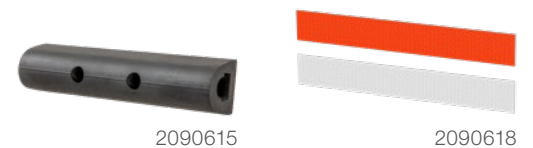
- Reflective finish for increased visibility
- Adhesive backing for easy installation
- 15" strips can easily be trimmed to desired length

| Make / Model                       | Years   | Foot Notes | Kit# (Bumper & Brackets) | Bumper Only# | Fixed Bracket# |
|------------------------------------|---------|------------|--------------------------|--------------|----------------|
| Dodge Sprinter 2500 / 3500         | 07 - 09 | 2, 3       | 415358-571511            | 415358       | 571511         |
| Ford Transit 150 / 250 / 350       | 15 - 20 | 1, 2, 3    | 415358-571512            | 415358       | 571512         |
| Freightliner Sprinter 2500 / 3500  | 07 - 20 | 2, 3       | 415358-571511            | 415358       | 571511         |
| Mercedes-Benz Sprinter 2500 / 3500 | 10 - 20 | 2, 3       | 415358-571511            | 415358       | 571511         |
| Ram ProMaster 1500 / 2500          | 14 - 20 | 2, 3       | 415358-571513            | 415358       | 571513         |
| ProMaster 3500                     | 14- 20  | 2, 3, 4    | 415358-571513            | 415358       | 571513         |

1. Remove factory bumper
2. Excluding factory receiver
3. Will interfere with parking sensors
4. Extended cargo van with 159" wheel base only

**Additional Accessories**

- Sold separately



| Part #    | Includes  |
|-----------|---|
| 571649    | Four brackets and hardware (no extra wiring needed) |
| 2090615   | One bumper (hardware not included)                  |
| 2090615-3 | Three bumpers and hardware                          |
| 2090618   | One 15" red strip, one 15" white strip              |