



ARIES

Jeep Wrangler Products

TrailCrusher® Jeep Bumpers

- Winch and shackle ratings of 12,500 lbs. for JK and 9,500 lbs. for TJ
- Standard winch mounting platform accepts most types of winches
- Shackle mounts accept pins up to 7/8" in diameter (#2166071 recommended)
- No-drill install uses factory mounting points with no pump relocation required
- One-piece construction with 3/16" thick, all-steel plates for maximum strength
- Highly durable carbide black powder coat with rust-resistant E-coat finish
- Angular brush guard helps protect the winch and adds an aggressive look



07-18 Jeep JK



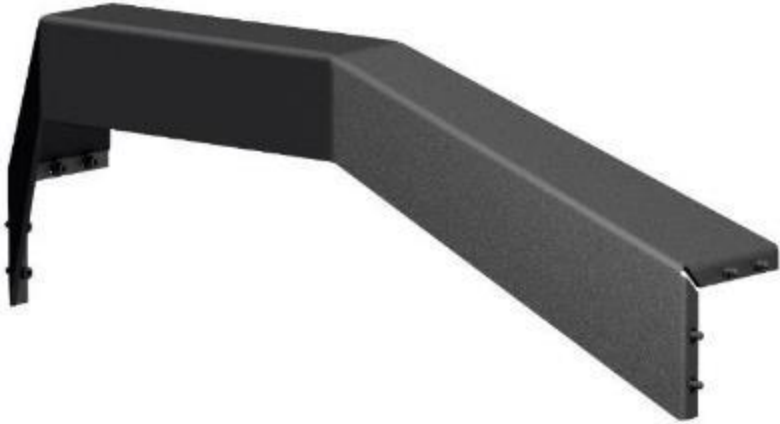
96-06 Jeep TJ

TrailCrusher® Jeep Bumpers

- Rear bumpers also available for both Jeep JK and TJ



TrailCrusher® Accessories



Stinger-style brush guard



12.5K shackles



Hawse fairlead



Roller fairlead

TrailChaser® Jeep Bumpers

- 24 unique bumper configurations available with or without LED lights (20 front / 4 rear)
- Modular pieces can be added or removed as desired to change the look any time
- Available in lightweight aluminum or high-strength steel
- Textured black powder coat easily hides minor scratches and grime
- 22-1/2" x 7-3/4" winch housing
- Uses pre-existing factory mounting points for no-drill installation



TrailChaser® Jeep Bumpers





TrailChaser® Accessories



Stinger-style brush guard



Anti-rattle D-rings



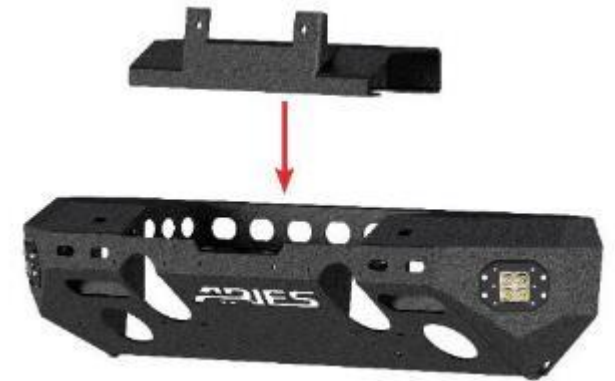
Hawse fairlead



Roller fairlead



Winch reinforcement
(aluminum bumpers only)



Fairlead adapter

Jeep Light Mounts

- Available for 07-18 Jeep JK and 96-06 TJ
- Carbide black powder-coated stainless steel construction (windshield brackets are steel)
- Removable brushed stainless steel cover plate for added style and light bar security
- Hood brackets will not interfere with factory windshield washer sprayers
- No-drill, vehicle-specific installation for a custom fit



Hood mount with 20" light bar



Windshield mounts with 2" lights



Roof mount with 50" light bar



Roof mount with crossbar for work lights



Jeep Tube Doors

- Available for Jeep TJ, JK and JL
- Open design and aggressive cutout for ultimate offroad look and feel
- Hardened T6 aluminum construction to be strong, lightweight and rust-free
- Textured black powder coat easily hides minor scratches and grime
- 100% TIG welds for a precise fit
- Simple installation using existing hinge points
- Accepts factory mirrors (not compatible with power mirrors)



ARIES

JEEP WRANGLER PRODUCTS

CURT
GROUP



Jeep Fender Flares

- Hardened T6 aluminum construction to be strong, lightweight and rust-free
- Textured black powder coat easily hides minor scratches and grime
- Also available in paintable raw finish
- Flat profile allows for greater clearance with larger, off-road tires
- Solid, bolt-on installation and vehicle-specific fit (drilling may be required)
- Accepts LED fender flare side markers #1500240 (not included)
- Available for front and rear wheels (front width: 9-1/4", rear width: 5-1/2")



Jeep Inner Fender Liners

- Helps protect engine compartment against mud, water and other debris
- Replaces plastic factory fender liners on the front and rear
- Welded aluminum construction to be strong, lightweight and rust-free
- Highly durable carbide black powder coat finish for maximum corrosion resistance
- Compatible with fender flares
- Some drilling and rivet nut installation required



ActionTrac™ Powered Running Boards

- Patented step-within-a-step™ design for easier access, especially on large vehicles
- 3" powered step automatically drops 8" when door opens, up to 15" below doorsill
- 4" top step provides convenient access to the roof of the vehicle
- Housing shields retractable step, pivot points and electronics from the elements
- Contoured design helps protect the rocker panels from road debris and door dings
- Powder-coated 6061-T6 aluminum is durable, lightweight and non-corrosive





ActionTrac™ Powered Running Boards

- Simple-2-install™ system with no-drill brackets and no-splice wiring
- Install video: <https://youtu.be/BSzXK6AIXc0>
- Integrated control module detects obstructions and eliminates pinch hazards
- Single, rotary motor for fast, quiet, maintenance-free operation
- Integrated LED lights activate on deployment for added visibility and safety
- Rated for 650 lbs. static weight capacity (limited to mounting structure)



Rocker Steps

- Double-tube layout and 3" wide top plate provide a solid step
- Heavy-duty design offers extra protection for the sides of the vehicle
- Flat profile increases ground clearance to be off-road ready
- Textured black powder coat easily hides minor scratches and grime
- High-strength, all-steel construction with no plastic parts
- Pre-welded mounting brackets for increased rigidity and simpler installation
- No-drill, vehicle-specific application for a custom fit





Security Cargo Lid

- Six-panel, bolt-on design integrates with the Jeep layout (4-door models only)
- Key-operated enclosure provides a generous storage area
- Hardened T6 aluminum with textured black powder coat
- Works independently of the rear door for maximum functionality
- Lid can be flipped up and converted into a workbench or table area
- 1/2" diameter tie-down anchors on top for securing additional cargo
- Weight capacity up to 75 lbs.
- Compatible with hardtop on or off, soft top and subwoofer





Heavy-Duty Spare Tire Carrier

- Accepts oversized, off-road-style spare tires up to 37" in diameter
- Vertically and horizontally adjustable to avoid oversize tire interference
- Third brake light bracket can be raised or lowered to maintain visibility
- Replaces factory door hinges with heavy-duty hinges for a secure mount
- Steel construction with carbide black powder coat
- No-drill, vehicle-specific installation for a custom fit
- Compatible with Wrangler rear factory bumper



Roof Cargo Brackets

- Allows mounting of roof cargo baskets for added storage on the Jeep Wrangler
- Rated for a maximum capacity of 150 lbs.
- Full-width slotted channels for adjustable positioning of straps, hooks or bolts
- Quick-release gutter clamps allow for no-drill, as-needed installation
- Constructed from welded steel for reliable strength
- Durable carbide black powder coat finish for maximum rust resistance

