



 **CURT**[®]

5th Wheel Hitches

The CURT 5th wheel line offers a range of weight capacities, versatile mounting options and more OEM puck system products than anyone else.

- GTW capacities from 16K up to 30K
- All 5th wheels available with legs, base rails, rollers, OEM legs and OEM roller adapters
- Gooseneck adapter plates compatible with CURT and competitive gooseneck hitches
- Tested to SAE J2638 standards for safety
- Durable carbide black powder coat finish



PowerRide™ 30K

- Tough, professional-grade capacity and enhanced functionality
- Ergonomic, self-resetting handle for easier use from the side of the truck bed
- Multi-directional, cast yoke head for a smooth ride and less strain on the truck
- Constructed with a cast steel main body for dependable strength
- Tested and rated to 30,000 lbs. GTW / 7,500 lbs. vertical load per SAE J2638
- Integrated polyethylene plates for smooth operation, reduced wear and no grease
- Fast, one-pin head removal makes moving easy with smaller, lighter pieces



PowerRide™ 30K

- Strategic grip points for ergonomic moving and handling
- Three-position coupling indicator clearly shows coupling status
- Patented interlocking jaws for full kingpin contact and coupling security
- Premium, textured, dark grey teridium finish for lasting rust resistance
- 6" height adjustment for greater versatility versus 3" options
- No welding or fabrication required for installation



CrossWing™ 20K

- Premium steel construction offers robust 20,000-lb. capacity
- Reinforced head connection point for superior strength and peace of mind
- Easy, one-person installation and removal
- 65% lighter than most traditional 5th wheel hitches (main body weighs 60 lbs.)
- Unique coupling system eliminates guesswork by offering visible contact surface
- Head channel guides kingpin into place for easier hookup
- Easy-to-reach release handle for ergonomic operation



#16600 for industry-standard rails

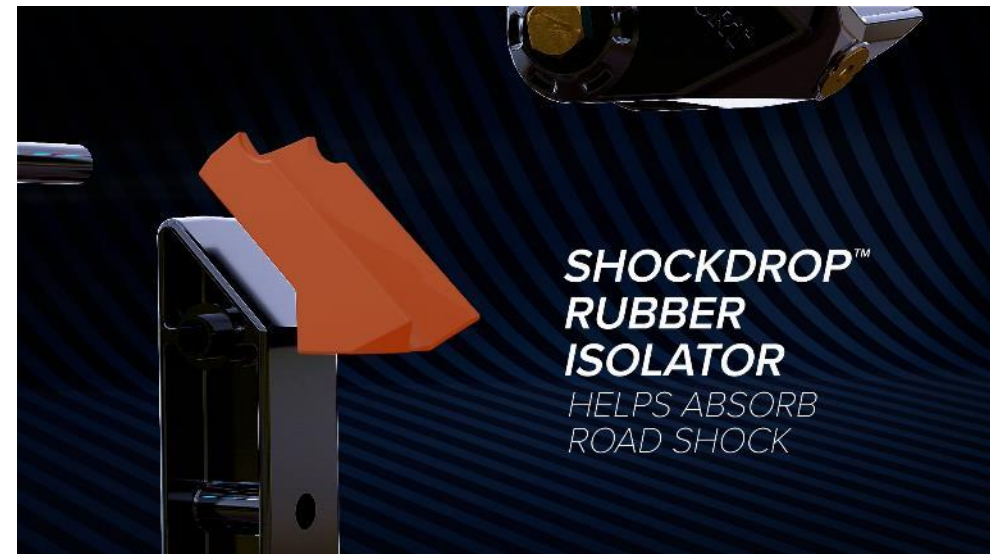
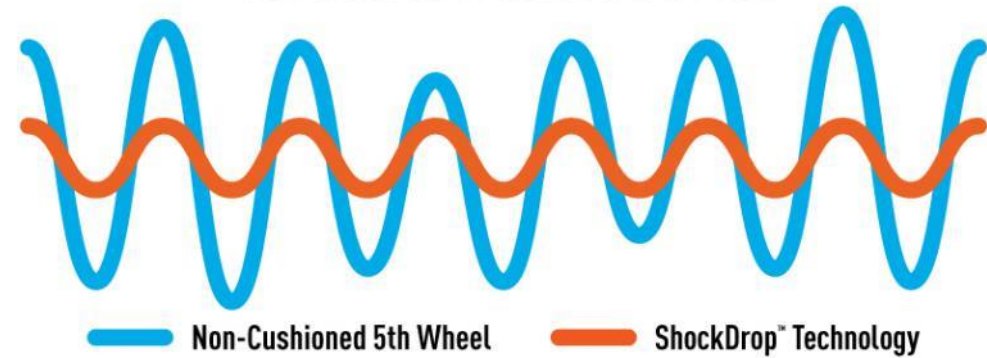


Coming soon - gooseneck mount

CrossWing™ 20K

- Features patent-pending ShockDrop technology to reduce jerking and jarring
- Allows fore, aft and lateral head articulation when connecting on uneven terrain
- Three points of height adjustment from 16-3/8" to 20-3/8"
- Coupling point offset 5" rearward for added turning clearance
- Premium, carbide textured black finish for lasting rust resistance
- High-grade steel design for added strength vs. aluminum
- Tested for safety in accordance with SAE J2638

VIBRATION REDUCTION



A-Series™

- The A-series™ is named for its articulating head design. The head is built on a patented cast yoke that offers a stable, quiet ride, even with large 5th wheel trailers.
- This cast yoke also features torsion springs and poly-torsion inserts to support the head and add even more stability to the connection.



A30™ with GM puck system legs



A25™



A20™



A16™

A-Series™



Lockable handle self-resets to the ready-to-couple position after the hitch is uncoupled



Fully articulating torsion head for controlled coupling and a stable, quiet ride



Alignment pegs and easy-access bolts for simple leg attachment (select models)



Cast yoke and poly-torsion inserts suppress shock loads and reduce noise

A-Series™

- Fast, one-pin head removal makes moving easy with smaller, lighter pieces
- High-strength, interlocking cast jaws fully wrap the kingpin to minimize noise
- Extra wide head opening for easier coupling
- Constructed with a cast steel main body for a more precise build (select models)
- Compatible with kingpin extension boxes, including common pivoting pin boxes
- Patent# 8,827,298
- Limited lifetime warranty





Q-Series™

- The Q-series™ is designed to offer the quietest towing possible. It features a spherical axial bearing that allows the head to tilt in any direction needed to ensure a smooth ride.
- The head is also equipped with three grease fittings for continuous lubrication and thick rubber stoppers to cushion the head.



Q25™



Q24™



Q20™

Q-Series™



Spherical axial bearing allows the head to tilt in any direction needed for a smooth ride



Dual jaws fully wrap the kingpin to reduce chucking noises and increase towing security



Wide, self-aligning head helps eliminate errors when backing up to the trailer for easier coupling



Lockable, short-throw handle automatically engages with the kingpin to simplify operation



5TH WHEEL HITCHES

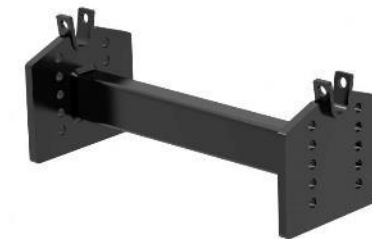


E-Series™

- Pivots on dual axes for 10° of lateral movement
- Automatically locks for easy, secure coupling
- Operates using a single handle
- Mounts to all industry-standard base rails
- Offers four height adjustment positions to adapt to each unique truck bed
- Compatible with kingpin extension boxes, including common pivoting pin boxes
- Limited lifetime warranty



E16™



#16505 adapter
for use with rollers



5TH WHEEL HITCHES



Quick Comparison

Features	CrossWing™	PowerRide™	A-Series™	Q-Series™	E-Series™
Pivoting Mechanism	Articulating head	Cast yoke with two pivot points	Cast yoke with two pivot points	Spherical axial bearing	10° dual-pivoting head
Handle Operation	Single-throw, quarter-turn	Single-throw, self-resetting handle	Single-throw, self-resetting handle	Short-throw, single handle	Single handle
Head Opening	Funnel system	Extra wide, self-aligning	Extra-wide, self-aligning	Extra-wide, self-aligning	Self-aligning
Jaw Type	Locking arm	Dual, interlocking	Dual, interlocking	Dual	Locking bar
Coupling Indicator	Visible contact surface	Yes	Yes	Yes	No
Head Removal	n/a	One-pin	One-pin	Two-pin	Two-pin
Sidewinder Compatible	Yes (wedge required)	Yes (wedge required)	Yes (wedge required)	No	Yes (wedge required)
GTW Options	20K	30K	16K, 20K, 25K, 30K	20K, 24K, 25K	16K
Warranty	Limited lifetime	Limited lifetime	Limited lifetime	Limited lifetime	Limited lifetime

Mounting Options

OEM Puck System Products

- Legs, rollers and base rail options available
- Simple quarter-turn anchoring system
- Options available for Chevrolet, Ford, GMC, Nissan and Ram



#16027 equips new puck system with standard rails



Mounting Options

X5™ Adapter Plates

- Converts EZr™, Double Lock™ or competitor goosenecks to 5th wheel rails
- Compatible with CURT 5th wheels up to 20,000 lbs.



5th Wheel Sliders

- Intended to provide added clearance for short-bed trucks
- Available in 16K and 25K capacities



Mounting Options

Custom Under-Bed Brackets

- Vehicle-specific application reduces or eliminates drilling
- Protected by a rust-resistant liquid A-coat



Industry-Standard Base Rails

- Available in 25K and 40K capacities
- Powder coat and liquid A-coat finish



How to Select a 5th Wheel Hitch

What size is the truck bed?

- The length of the truck bed will determine which type of mounting platform the 5th wheel hitch requires: legs or a slider.

Long-bed

- The standard method for mounting a 5th wheel hitch is a set of 5th wheel legs. A long-bed truck will provide the necessary room for this option.



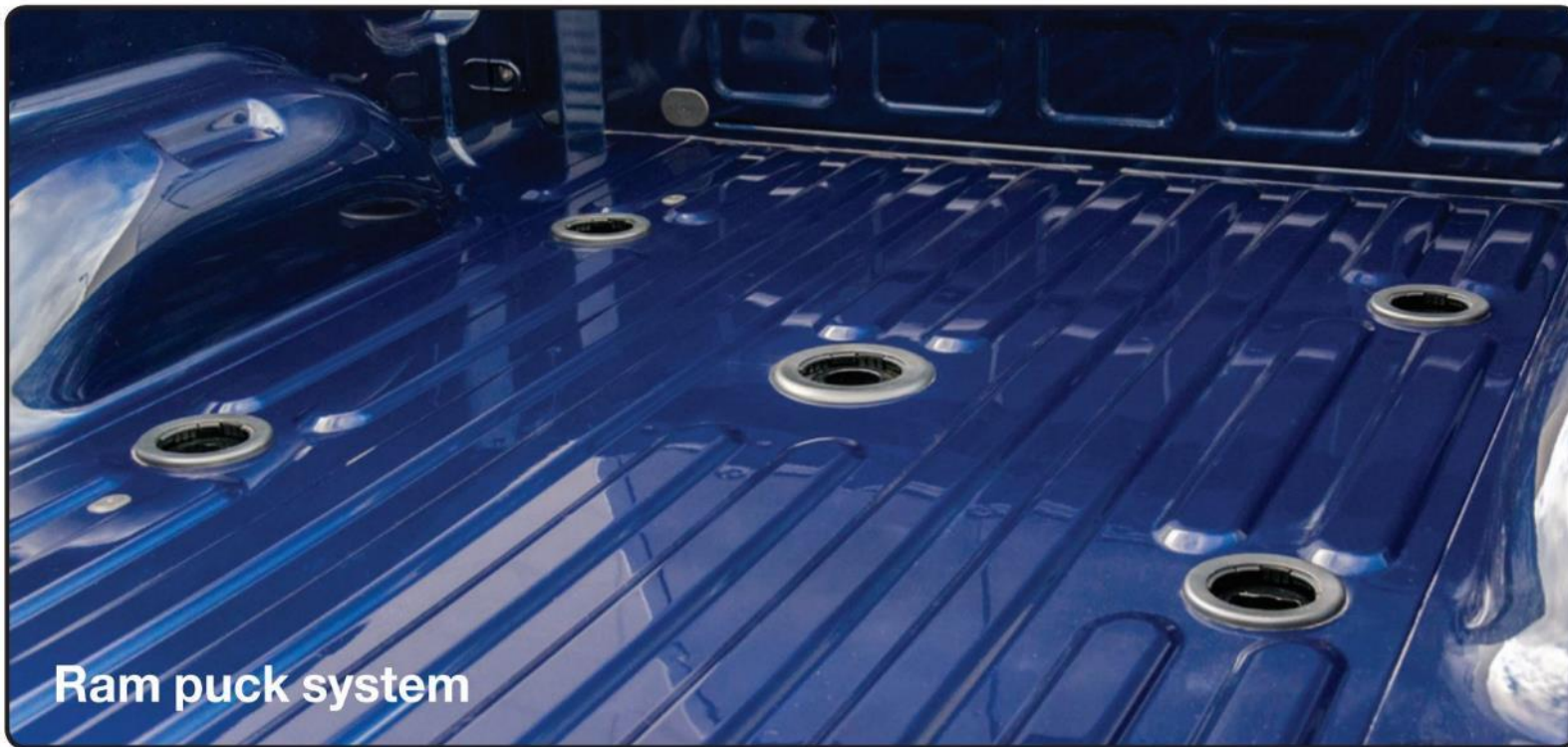
Short-bed

- A 5th wheel slider is recommended on short-bed trucks. A slider's job is to add clearance between the cab and the trailer when making tight turns.



How to Select a 5th Wheel Hitch

Does the truck have an OEM puck system?



How to Select a 5th Wheel Hitch

Does the truck have an OEM puck system?

- Chevrolet, Ford, GMC, Nissan and Ram offer a built-in mounting platform called a puck system for installing a 5th wheel hitch. If the bed does not have a puck system, 5th wheel base rails will be needed.

Long-bed

- If the long bed has a puck system, select a 5th wheel hitch with OEM puck system legs.



Short-bed

- If the short bed has a puck system, select an OEM puck system roller or slider to mount the hitch.



How to Select a 5th Wheel Hitch

Does the customer prefer permanent base rails?

- If your customer prefers fixed rails in the truck bed, select a vehicle-specific, under-bed bracket kit and corresponding base rails to mount the 5th wheel hitch.

Long-bed

3. 5th wheel with legs



2. Above-bed base rails



1. Custom under-bed brackets



Short-bed

3. 5th wheel with roller



2. Above-bed base rails



1. Custom under-bed brackets



How to Select a 5th Wheel Hitch

Does the customer prefer removable base rails?

- If your customer prefers the option of easily removing the base rails for an unobstructed truck bed, select a Double Lock EZr™ gooseneck hitch kit and an X5™ adapter plate to mount the 5th wheel.

Long-bed

3. 5th wheel with legs



2. Above-bed X5 adapter



1. Under-bed gooseneck hitch kit



Short-bed

3. 5th wheel with roller



2. Above-bed X5 adapter



1. Under-bed gooseneck hitch kit



Base Rail Lock #23256

- Locks a 5th wheel hitch into the rails, taking the place of a pin & clip
- Extra-long 1/2" diameter pin fits all industry-standard base rails
- Rust-free aluminum housing with a durable black powder coat finish
- Weather-resistant dust cap helps prevent internal corrosion
- Easy-to-operate, 1/8-turn lock activation
- Not compatible with OEM puck systems



5th Wheel Wedges

- Allows CURT PowerRide™, A-series™ or E-series™ to be used with Sidewinder™ pin boxes (Trademark of Horizon Global™)
- Prevents unsafe lateral movement between 5th wheel hitch and rotating pin box
- Securely bolts onto the pin box, behind the kingpin
- Durable carbide powder coat finish



Fits E-series™



Fits A-series™

Lube Plates

- Provides a buffer between 5th wheel hitch head plate and kingpin pin box
- Reduces normal wear and tear when towing
- Eliminates messy grease deposits on hitch head plate
- 12" plate features self-cleaning grooves to maintain good lubrication
- Easily fits on any standard kingpin
- Constructed from tough polyethylene
- Included with all 5th wheel hitches



Limited Lifetime Warranty

- CURT provides limited lifetime warranty coverage against defects in factory workmanship and materials for CURT products sold by authorized CURT dealers for use by retail (end use) consumers.
- https://storage.googleapis.com/curt-group-warranties/CURT_Warranty_2018.02.09.pdf

Product	Workmanship & Materials	Components & Parts	Finishings & Coatings
Hitches	Lifetime	One-year	One-year
Brake controls	Lifetime	One-year	One-year
Electrical and wiring	One-year	One-year	One-year
Other accessories	Lifetime	One-year	One-year



LIMITED LIFETIME WARRANTY

CURT MANUFACTURING, LLC ("CURT") provides limited lifetime warranty coverage against defects in factory workmanship and materials for CURT® products ("Products") sold by authorized CURT dealers for use by retail (end use) consumers. This Limited Warranty is provided only to the original Product consumer, and applies only to the original installation. This Limited Warranty is not transferable and does not extend or apply to anyone else. For consumers in the U.S., this Limited Warranty gives you specific legal rights; you also may have other rights, which vary from state to state.

This Limited Warranty is the sole and exclusive warranty provided by CURT, and all other warranties and conditions are excluded and disclaimed. **UNDER THE LAW OF CERTAIN STATES, THERE MAY BE NO IMPLIED CONDITIONS OR WARRANTIES FROM CURT APPLICABLE TO YOUR PRODUCT, AND ALL IMPLIED CONDITIONS OR WARRANTIES (INCLUDING ANY WARRANTY OF MERCHANTABILITY OR FITNESS FOR A PARTICULAR PURPOSE) ARE EXCLUDED AND DISCLAIMED WHERE ALLOWED BY LAW.** If implied warranties are imposed under any applicable state law, all such implied warranties are limited to the duration of the applicable provisions of this Limited Warranty. Some states do not allow limitations on how long an implied warranty lasts, so the above limitation may not apply to you.

COVERED PRODUCTS AND LIMITATIONS

CURT provides the following Limited Warranty coverage:

Product	Workmanship & Materials	Components & Parts	Finishings & Coatings
Hitches	Lifetime	One-year	One-year
Brake controls	Lifetime	One-year	One-year
Electrical and wiring	One-year	One-year	One-year
Other accessories	Lifetime	One-year	One-year

Each of the warranty coverage periods runs from the date of purchase of the Product (proof of purchase is required), and applies only to warranted defects that first occur and are reported to CURT within the applicable warranty period. CURT retains the right to determine to its reasonable satisfaction whether any claimed defect is covered by this Limited Warranty.

Certain items are excluded from Limited Warranty coverage by CURT, and this Limited Warranty coverage does not apply to:

- Wear and tear from normal use, including damage from road debris
- Improper product selection, application, installation or maintenance

- Modifications, including the attachment of other hardware or components
- Misuse, abuse, overloading, improper trailer or hauling, accident
- Corrosion or damage due to environmental conditions

REMEDIES UNDER THIS LIMITED WARRANTY

If a defect covered by this warranty occurs, CURT will repair or replace the Product, or refund the purchase price, in its sole discretion. This "repair, replacement or refund" remedy is the sole and exclusive remedy under this Limited Warranty. CURT has no responsibility or liability for any incidental or consequential damages, such as loss of use of vehicles or trailers, towing charges, storage charges, the carriage, labor and service charges for removing or reinstalling products, loss of or damage to personal property, or interest or finance charges, all of which are specifically excluded and disclaimed from this Limited Warranty. Some states do not allow the exclusion or limitation of incidental or consequential damages, so the above limitation or exclusion may not apply to you.

RESPONSIBILITY OF PURCHASER

The Purchaser must have proof of purchase to obtain service under this Limited Warranty. Contact CURT for a Returned Goods Authorization (RGA) and return instructions. CURT will not accept Products unless an RGA has been issued. The Purchaser must deliver the Product to CURT or an authorized CURT dealer along with the RGA number and proof of purchase.

The CURT Limited Warranty policy in effect on the date you purchased your Product determines the applicable warranty coverage, and subsequent or prior CURT warranties are not applicable to your Product. The terms of this Limited Warranty cannot be changed or modified, except by a written agreement signed by an officer of CURT. CURT reserves the right to improve its products through changes in design or materials without being obligated to the owners of the Products of the same or similar models.

Contact information:
CURT Headquarters
 6208 Industrial Drive
 Eau Claire, WI 54701
 800.798.0813