

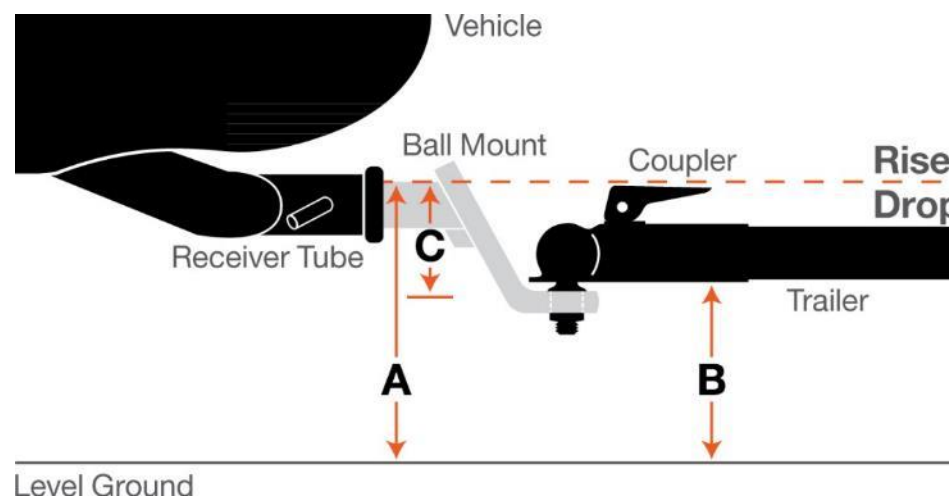
A large, semi-transparent CURT logo is overlaid on the center of the image. It features the stylized orange icon and the word "CURT" in a bold, orange, sans-serif font.

# Ball Mounts



## How to Select a Ball Mount

- Determine if you need ball mount drop or rise.  
 **$B - A = C$**
- Positive # = Rise needed  
Negative # = Drop needed
- **Example:**  
Receiver tube height (A) = 14"  
Level trailer height (B) = 18"
- Which ball mount is needed?

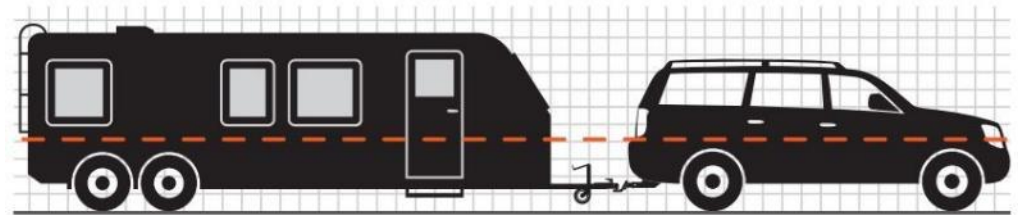


- A. Distance from ground to the top of the inside of the receiver tube opening
- B. Distance from the ground to the bottom of the trailer coupler
- C. Drop or rise needed



## Goal: Make the Vehicle and Trailer Level

- **Level towing**  
Achieves optimal driving conditions
- **Too much drop**  
Results in poor vehicle traction,  
causing unsafe driving conditions
- **Too much rise**  
Places weight behind the trailer axles,  
resulting in sway (most unsafe condition)



Level towing



Towing with too much drop



Towing with too much rise

**CURT offers a wide variety of ball mounts!**







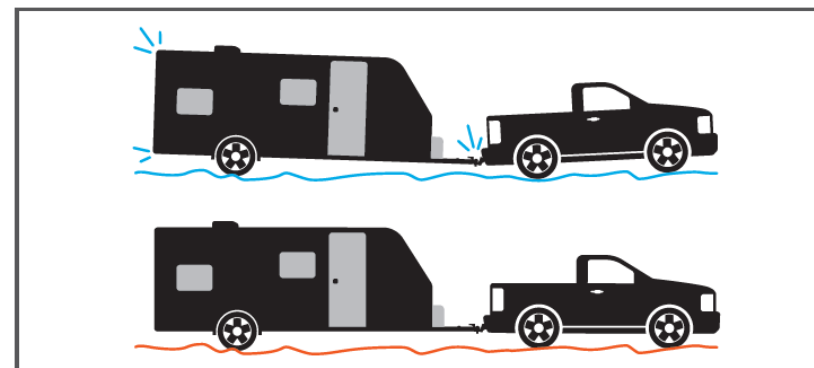
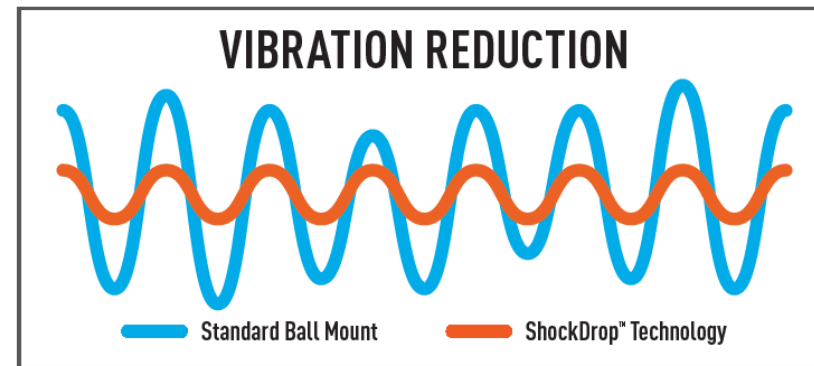
## Rebellion™ XD Adjustable Ball Mount

- Dynamic, adaptive suspension ball mount featuring **ShockDrop™ technology**
- Dampens jerking and jarring from bumps and potholes for smoother towing
- Cushioned isolator reduces rattling and vibration for a more comfortable ride
- Increases driver control by reducing tendency for trailer sway
- Improved trailer control during events of sudden braking



## Rebellion™ XD Adjustable Ball Mount

- Virtually maintenance-free with no airbag or bearings to service
- Minimizes stress on tow vehicle's suspension and brakes for extended longevity
- Lighter-weight design for less stress on the trailer hitch receiver





## Rebellion™ XD Adjustable Ball Mount

- Adjustable, six-position head for precise leveling with different trailers
- Cast steel construction for dependable towing power
- Textured, dark grey teridium finish for a premium look on your vehicle



20K Option with Dual Ball #45955



15K Option with 2-5/16" Ball #45980



10K Option with 2" Ball #45981

## Rebellion™ XD Accessories



Pintle mount attachment  
#45950



15K dual-ball attachment  
#45952



20K dual-ball attachment  
#45953



Replacement tongue  
#45940



Hitch and tongue lock set  
#45932



Vertical shank tongue lock  
#45938



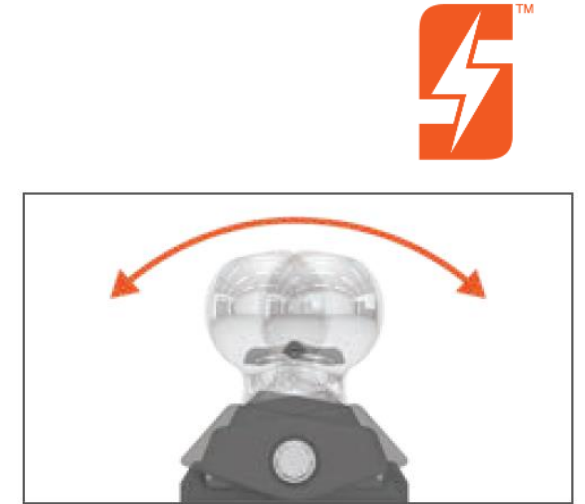
Replacement pins  
#45959



Replacement clip  
#45960

## RockerBall™ Cushion Hitch Trailer Ball

- Dynamic trailer ball featuring **ShockDrop™ technology**
- Retrofits onto most existing ball mounts to improve current towing experience
- Dampens jerking and jarring from bumps and potholes for smoother towing
- Virtually maintenance-free with no airbag or bearings to service
- Grease zerk fitting provides easy, continuous lubrication
- Anti-swivel base keeps RockerBall™ locked in place
- Available with 2" or 2-5/16" ball
- Tested for safety to meet SAE J684 specifications





## RockerBall™ Cushion Hitch Kits

- Includes RockerBall™, ball mount and anti-rattle kit
- Dynamic trailer ball featuring **ShockDrop™ technology**
- Tested for safety to meet SAE J684 specifications



3" drop kit #45143



5" drop kit #45144

## Adjustable Channel Mounts

- Available for 2", 2-1/2" and 3" receiver tubes
- Shank can be flipped to maximize rise or drop and precisely level the trailer
- Deep-drop shanks also available
- Rated for up to 21,000 lbs. GTW
- Built-in anti-rattle helps promote quiet towing
- Protected by a highly durable carbide powder coat finish
- Patent# US8,033,563







# BALL MOUNTS





## Euro Mount® Ball Mounts

- Fits any 1-1/4" x 1-1/4" receiver tube opening
- Up to 3,500 lbs. GTW
- Installs easily with no tools or torque specifications required
- Permanently attached trailer ball cannot be loosened or stolen
- Protected by a highly durable carbide powder coat finish
- Patents: D610,051 S; D610,492 S; D610,493 S; D610,494 S; D610,954 S



## Standard Ball Mounts

### Classes 1 & 2

- Fits any 1-1/4" x 1-1/4" receiver tube opening
- Up to 2,000 or 3,500 lbs. GTW



### Classes 3 & 4

- Fits any 2" x 2" receiver tube opening
- GTW capacities ranging from 3,500 up to 12,000 lbs.



## Aluminum Ball Mounts

- Constructed from solid aluminum to be lightweight and naturally rust-resistant
- Fits trailer hitches with a 2" x 2" receiver tube opening
- Available in 2", 4" and 6" drop options (1", 3" and 5" rise respectively)
- Rated for 8,000 lbs. GTW / 800 lbs. TW
- Equipped with a 1" hole to accept a trailer ball shank
- Tested for safety in accordance with SAE J684





## Towing Starter Kits

- All the accessories needed to complement a trailer hitch in one kit
- Includes ball mounts, trailer ball, lock and/or pin & clip
- Select kits also include a rubber hitch tube cover and retail-friendly carrying case
- Loaded ball mounts also available with included factory-torqued trailer ball and pin & clip





# BALL MOUNTS



## Fusion™ Ball Mounts

- Fits any 2" x 2" receiver tube opening
- Includes a welded trailer ball and pin & clip
- Permanently attached trailer ball cannot be loosened or stolen



## Multi-Ball Mounts

- Allows for quick switching between trailer ball sizes
- Permanently attached trailer balls cannot be loosened or stolen





## Forged Ball Mounts

- Fits 2", 2-1/2" or 3" receiver tube openings
- 3" tested and rated to 21,000 lbs. GTW and 2,800 lbs. TW
- Ideal for CURT class 5 Xtra Duty and Commercial Duty trailer hitches
- Constructed from solid, forged steel for superior strength
- Highly durable carbide black powder coat finish



## Additional 3" Options

### 3" to 2-1/2" or 2" Reducer Sleeves

- Reduces 3" receiver tube opening to 2-1/2" or 2"
- Smaller sleeve can also be used to reduce a 2-1/2" receiver to fit a 2" shank
- High-strength carbon steel construction with durable carbide powder coat finish



#45408



#45409

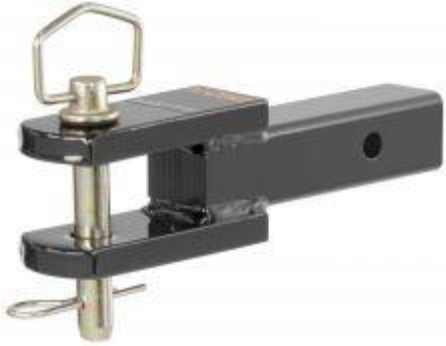
### Heavy-Duty Hitch Pin

- Fits any 3" x 3" receiver with a 5/8" pin hole
- Tested and rated to 21,000 lbs. GTW
- Strong steel build with zinc-plated finish
- Grooved pin allows clip attachment at any angle



#21507

## Specialized Ball Mounts



Clevis pin mount



Extra receiver mount



Shackle mount



Sway tab mount



Tow hook mount

## Adapters & Extenders

- Adapters change a receiver tube to a different size
- Available for 1-1/4", 2" 2-1/2" and 3"
- Extenders provide added clearance for a trailer or hitch-mounted accessory
- Available in lengths of 7", 8", 14" and 18"





## Limited Lifetime Warranty

- CURT provides limited lifetime warranty coverage against defects in factory workmanship and materials for CURT products sold by authorized CURT dealers for use by retail (end use) consumers.
- [https://storage.googleapis.com/curt-group-warranties/CURT\\_Warranty\\_2018.02.09.pdf](https://storage.googleapis.com/curt-group-warranties/CURT_Warranty_2018.02.09.pdf)

Product	Workmanship & Materials	Components & Parts	Finishings & Coatings
Hitches	Lifetime	One-year	One-year
Brake controls	Lifetime	One-year	One-year
Electrical and wiring	One-year	One-year	One-year
Other accessories	Lifetime	One-year	One-year



## LIMITED LIFETIME WARRANTY

CURT MANUFACTURING, LLC ("CURT") provides limited lifetime warranty coverage against defects in factory workmanship and materials for CURT® products ("Products") sold by authorized CURT dealers for use by retail (end use) consumers. This Limited Warranty is provided only to the original Product consumer, and applies only to the original installation. This Limited Warranty is not transferable and does not extend or apply to anyone else. For consumers in the U.S., this Limited Warranty gives you specific legal rights; you also may have other rights, which vary from state to state.

This Limited Warranty is the sole and exclusive warranty provided by CURT, and all other warranties and conditions are excluded and disclaimed. **UNDER THE LAW OF CERTAIN STATES, THERE MAY BE NO IMPLIED CONDITIONS OR WARRANTIES FROM CURT APPLICABLE TO YOUR PRODUCT, AND ALL IMPLIED CONDITIONS OR WARRANTIES (INCLUDING ANY WARRANTY OF MERCHANTABILITY OR FITNESS FOR A PARTICULAR PURPOSE) ARE EXCLUDED AND DISCLAIMED WHERE ALLOWED BY LAW.** If implied warranties are imposed under any applicable state law, all such implied warranties are limited to the duration of the applicable provisions of this Limited Warranty. Some states do not allow limitations on how long an implied warranty lasts, so the above limitation may not apply to you.

### COVERED PRODUCTS AND LIMITATIONS

CURT provides the following Limited Warranty coverage:

Product	Workmanship & Materials	Components & Parts	Finishings & Coatings
Hitches	Lifetime	One-year	One-year
Brake controls	Lifetime	One-year	One-year
Electrical and wiring	One-year	One-year	One-year
Other accessories	Lifetime	One-year	One-year

Each of the warranty coverage periods runs from the date of purchase of the Product (proof of purchase is required), and applies only to warranted defects that first occur and are reported to CURT within the applicable warranty period. CURT retains the right to determine to its reasonable satisfaction whether any claimed defect is covered by this Limited Warranty.

Certain items are excluded from Limited Warranty coverage by CURT, and this Limited Warranty coverage does not apply to:

- Wear and tear from normal use, including damage from road debris
- Improper product selection, application, installation or maintenance

- Modifications, including the attachment of other hardware or components
- Misuse, abuse, overloading, improper handling or handling, accident
- Corrosion or damage due to environmental conditions

### REMEDIES UNDER THIS LIMITED WARRANTY

If a defect covered by this warranty occurs, CURT will repair or replace the Product, or refund the purchase price, in its sole discretion. This "repair, replacement or refund" remedy is the sole and exclusive remedy under this Limited Warranty. CURT has no responsibility or liability for any incidental or consequential damages, such as loss of use of vehicles or trailers, towing charges, storage charges, the carriage, labor and service charges for removing or reinstalling products, loss of or damage to personal property, or interest or finance charges, all of which are specifically excluded and disclaimed from this Limited Warranty. Some states do not allow the exclusion or limitation of incidental or consequential damages, so the above limitation or exclusion may not apply to you.

### RESPONSIBILITY OF PURCHASER

The Purchaser must have proof of purchase to obtain service under this Limited Warranty. Contact CURT for a Returned Goods Authorization (RGA) and return instructions. CURT will not accept Products unless an RGA has been issued. The Purchaser must deliver the Product to CURT or an authorized CURT dealer along with the RGA number and proof of purchase.

The CURT Limited Warranty policy in effect on the date you purchased your Product determines the applicable warranty coverage, and subsequent or prior CURT warranties are not applicable to your Product. The terms of this Limited Warranty cannot be changed or modified, except by a written agreement signed by an officer of CURT. CURT reserves the right to improve its products through changes in design or materials without being obligated to the owners of the Products of the same or similar models.

Contact information:  
**CURT Headquarters**  
 6208 Industrial Drive  
 Eau Claire, WI 54701  
 800.798.0813