



# Marine Towing Equipment

## Marine Jacks

- Caster wheel for convenient trailer mobility and coupling
- Side-wind handle with comfort grip
- Swivel bracket allows jack to fully swing up and out of the way for travel
- Protected by a durable zinc-plated finish



## Jack Accessories



Jack foot



Jack foot



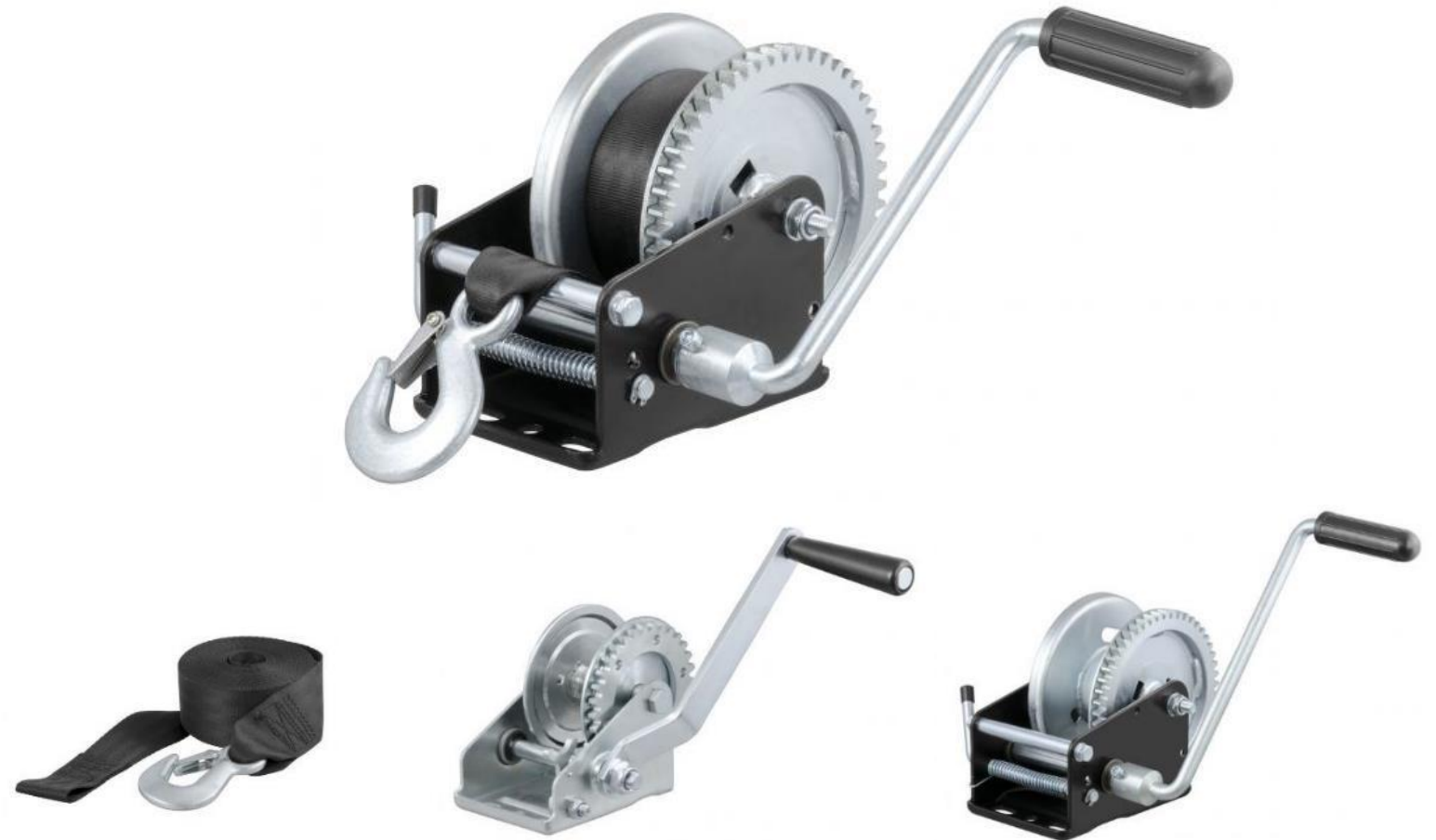
Jack foot



Jack caster

## Boat Winches

- Crank-style winch for boat trailers or hoisting applications
- Constructed from high-strength, cold-forged steel
- Equipped with a locking lever for increased safety
- Strong pinions eliminate gear-to-shaft bonding failures
- Broached pinion shaft securely engages the pinion gear
- Broached pinion shaft securely engages the pinion gear
- Handle with plastic grip cover for easy, comfortable operation
- Base features slotted screw holes for flexible mounting



## Roof Rack Crossbars #18118

- Lightweight, E-coated aluminum construction (150-lb. capacity)
- Adjustable, universal design mounts to roof side rails with up to 50" span
- Rubber-coated clamps quickly secure with no tools required
- Integrated rubber strip on top of bars to protect and help secure cargo
- Sleek, oval-shaped cross bars to match the OE style of modern vehicles
- Compatible with CURT roof rack cargo carrier and kayak racks



## Roof Rack Kayak Holders #18320

- Lightweight aluminum construction with 75-lb. capacity
- Rotating arms pivot to fit virtually any size kayak
- Notched pivot points for precise positioning and locking
- Universal brackets mount on any roof rack crossbars with no tools required
- Foam padding protects kayak from scuffs and scratches
- Straps loop around the kayak for secure travel
- Arms fold up in seconds for convenient, compact storage





# MARINE TOWING EQUIPMENT



## Cargo Straps

- Perfect for securing cargo in trailers, truck beds and more
- Cambuckle mechanism allows for direct tension on lighter loads
- Ratchet mechanism allows for greater tension on heavy loads
- Straps constructed from high-strength, woven nylon
- Cinching components protected by a durable yellow zinc-plated finish



83036



83047



83048



83015



83016



83001



83002



83009



83010



83019



83020



83025



83026



83027



83028



## Wheel Bearing Kits

- Automatically maintains the correct internal pressure to avoid seal damage
- Includes two bearing cones, two bearing cups, a grease seal and cotter pin
- Available to fit spindle outside diameters 3/4", 1" and 1-1/16"



## Wheel Bearing Protectors

- Protects wheel bearings from dirt, water and road grime
- Maintains pressure and keeps bearing greased
- Features a small reservoir to keep bearings well-lubricated
- Covers prevent dust and debris from entering the bearing protector
- Hub bore sizes available in 1.78", 1.98", 2.32" and 2.44" diameters



## Wheel Chocks #22800

- Perfect for chocking wheels on a parked trailer or adding safety during vehicle maintenance
- Raised tread offers a better grip on the wheel
- Saw-tooth edges on the base provide solid traction on the ground
- Always to be used with vehicle brake
- Not for commercial use

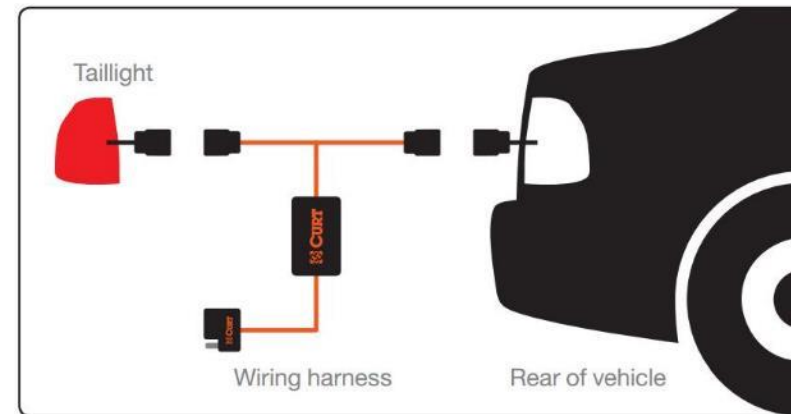


# Towing Electrical



## Advantages of CURT Custom Wiring

- Vehicle-specific application for a custom fit
- Plug-and-play design to eliminate the need for cutting and splicing
- Comes with all necessary components, including a converter if required
- Most install in 30 minutes or less
- Typical output is a 4-way or 5-way flat
- Hand-tested and circuit-protected



Custom wiring  
w/ converter

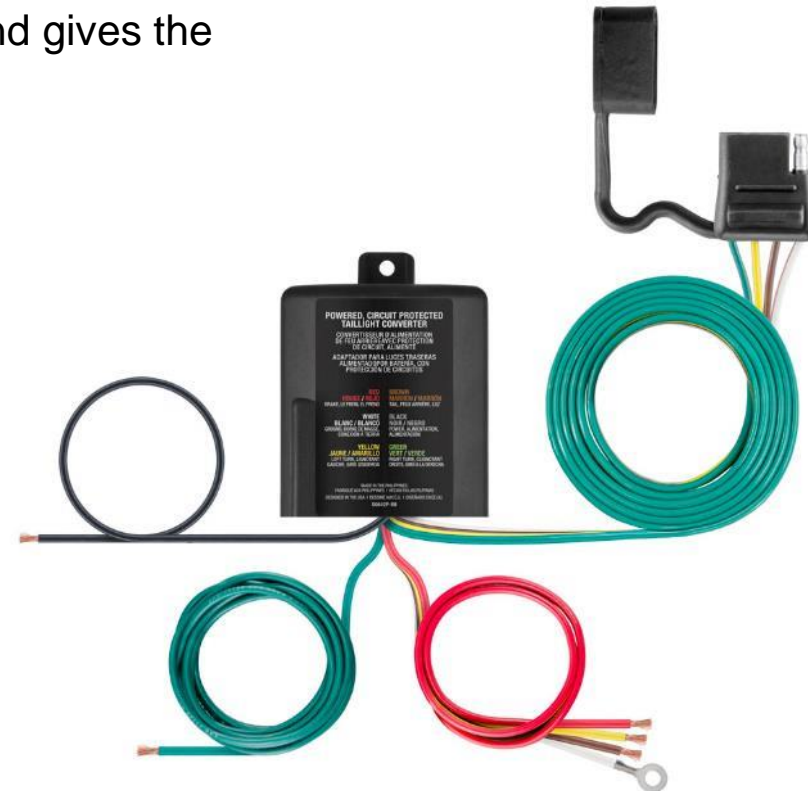


Custom wiring  
w/o converter

## Advantages of CURT Potted Enclosures

For increased quality and reliability, select CURT taillight converters and custom wiring harnesses feature a potted enclosure. The converter is filled with an epoxy resin that completely seals off the circuit board and gives the converter several advantages.

- Greatly increased protection against impacts and vibrations for longer life
- Impervious to weather and completely sealed off from moisture
- Allows converter to be mounted on the exterior of the vehicle

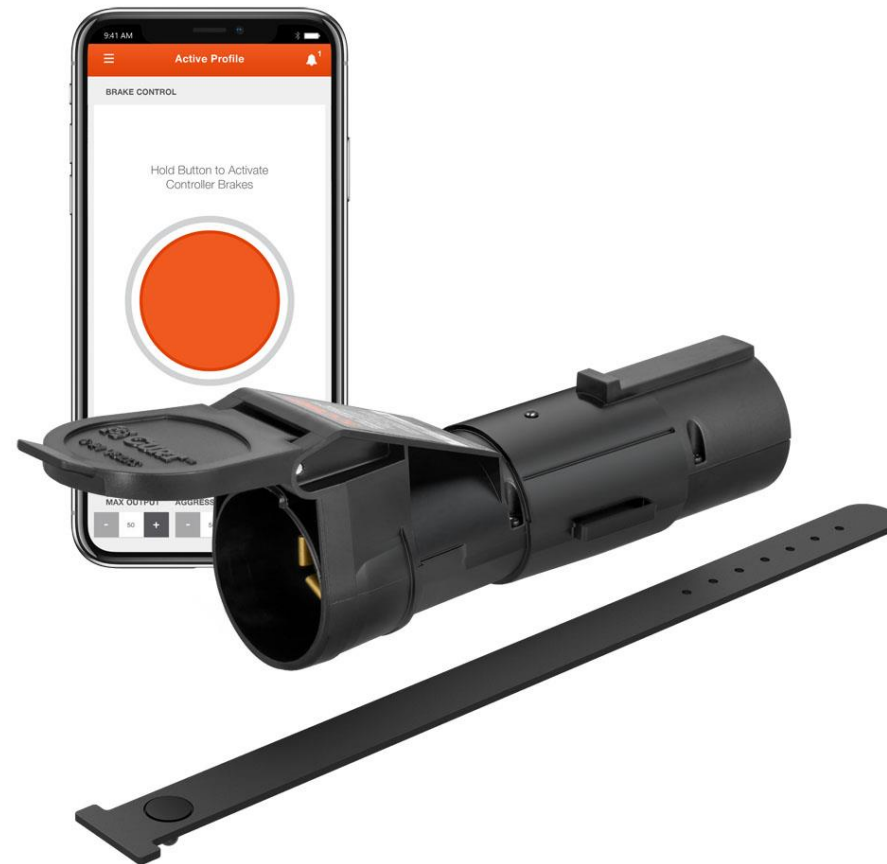




## World's First

### Echo® Mobile Brake Controller #51180

- Wireless, portable design allows for easy transfer from one vehicle to another
- Bluetooth connection to control all brake settings from your smartphone
- Custom-designed app monitors brake activity and sends status updates
- Downloadable app available for Apple and Android OS
- Stores multiple user and vehicle-trailer profiles
- Allows incoming calls to be received while app is running
- Triple-axis, motion-sensing accelerometer for highly responsive, smooth stops





## Echo® Mobile Brake Controller #51180

- Non-invasive, plug-and-play install between vehicle-trailer 7-way connectors
- Potted enclosure seals off electronics from the elements for lasting durability
- Retention strap and locking tab help keep Echo® firmly installed into 7-way
- Multi-color LED indicates power, trailer detection and wireless connectivity
- Automatic calibration reduces setup requirements
- Compatible with low-voltage systems, PWM systems, ABS and cruise control
- Built-in reverse-polarity and short-circuit protection
- **Limited lifetime warranty**



## Spectrum™ Integrated Brake Controller #51170

- Controls all brake settings with a simple push-button rotary knob
- Clean, dash-mounted, OEM-style user interface with 10 tri-color LEDs
- Main module can be mounted anywhere, at any orientation, out of sight
- Highly responsive, smooth stops with triple-axis, motion-sensing accelerometer
- Easily accessible manual override with the press of a button
- Features two installation options: drill mount or surface adhesive mount
- Electric over hydraulic capability





# BRAKE CONTROLLERS



## Spectrum™ Integrated Brake Controller #51170

- Main module can be mounted anywhere, behind or below the dash, out of sight



## Spectrum™ Integrated Brake Controller #51170

### MODES



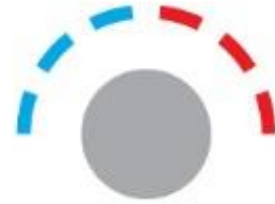
Manual  
(red)



Brightness  
(white)



Output  
(green - red)



Sensitivity  
(blue - red)

### INDICATORS



Calibration  
(ramp-up)



Overloaded  
(flashing)



Disconnected  
(flashing)



## Assure™ Brake Controller with Dynamic Screen #51160

- Pressure-sensitive manual override button for precise braking power
- Large, high-quality 1-1/2" OLED screen displays full text readout
- Sleek, low-profile design with tactile buttons
- Triple-axis, motion-sensing accelerometer for highly responsive, smooth stops
- Diagnostic alerts notify of potential problems like low voltage or disconnect
- Equipped with a quick plug for easy, plug-and-play installation



## TriFlex™ Brake Controller #51140

- Triple-axis, motion-sensing accelerometer for highly responsive, smooth stops
- Nine levels of sensitivity adjustment for varying loads or driving conditions
- User-selectable power output and trailer brake light activation
- Digital display with 0.1 increments
- Compact size: 3-1/4" wide, 4" deep, 7/8" tall



## Time-Delay Brake Controllers

### Discovery™ #51120

- Increases brake power based on gain setting and sensitivity adjustment
- Digital display
- Mounts anywhere in the vehicle
- Operates 2 - 8 brakes



### Venturer™ #51110

- Increases brake power based on gain setting and sensitivity adjustment
- LED display
- Mounts anywhere in the vehicle
- Operates 2 - 6 brakes



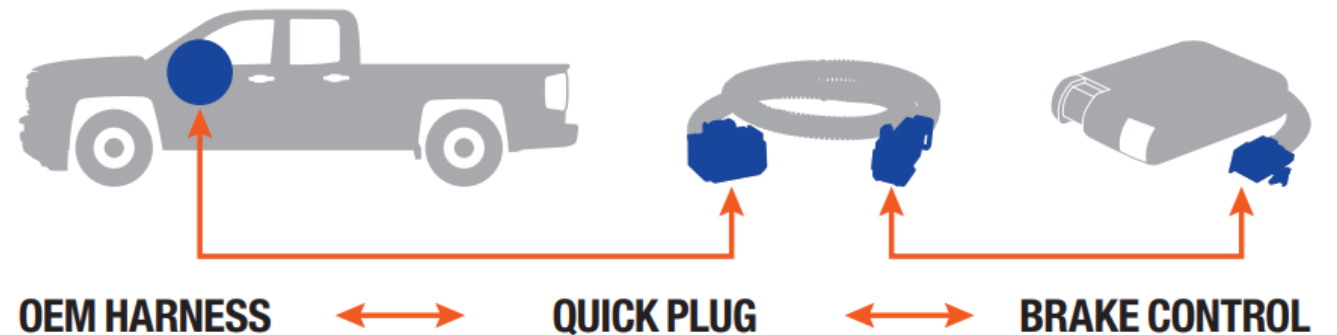


## Brake Controller Installation

- Equipped with quick plugs for fast, easy, vehicle-specific installation
- Include mounting hardware
- Optional spare bracket allows for convenient use of the same brake control in multiple vehicles



## QUICK PLUG EQUIPPED



## Quick Comparison



Echo®



Spectrum™



Assure™



TriFlex™



Discovery™



Venturer™

Name	Part#	Axles / Brakes	Activation	Display	Mount Angle	Level Adjust	Warranty
Echo®	51180	1-2 / 2-4	Tri-axis inertia	Smartphone	N/A	Auto	Limited lifetime
Spectrum™	51170	1-4 / 2-8	Tri-axis inertia	Tri-color LED	Any	Auto	Limited lifetime
Assure™	51160	1-4 / 2-8	Tri-axis inertia	OLED screen	Any	Auto	Limited lifetime
TriFlex™	51140	1-4 / 2-8	Tri-axis inertia	Digital	-20° to +70°	Auto	Limited lifetime
Discovery™	51120	1-4 / 2-8	Time-delay	Digital	Any	Auto	Limited lifetime
Venturer™	51110	1-3 / 2-6	Time-delay	LED	Any	Auto	Limited lifetime

# Towing Accessories

A smaller version of the CURT logo, featuring the stylized orange icon and the word "CURT" in orange.

7,500 lbs.  
GROSS TRAILER WT  
POIDS DE REMORQUE  
PESO DEL REMOLQUE

750 lbs.  
MAX TONGUE WT  
POIDS VERTICALE  
PESO VERTICAL

2" DROP

3/4" RISE

1" NOLE

DO NOT EXCEED ANY PART OF YOUR TOWING SYSTEM  
NE PAS EXCÉDER DE LA PARTIE DE VOTRE SYSTÈME DE TRACTI  
NO EXCEDA NINGUNA PARTE DE SU SISTEMA DE TRACTI  
NO EXCEDA NINGUNA PARTE DE SU SISTEMA DE TRACTI



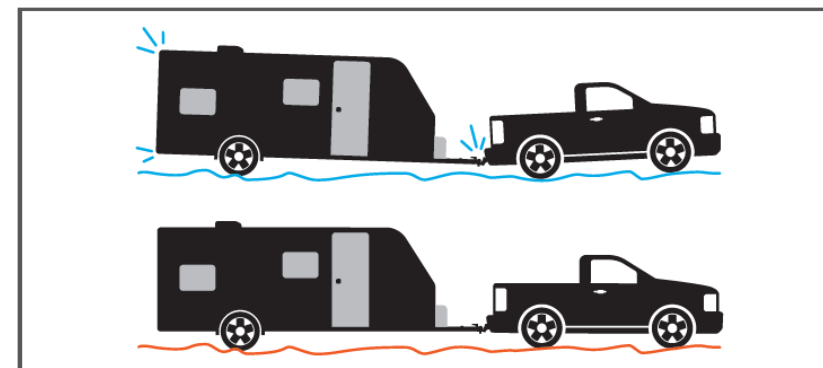
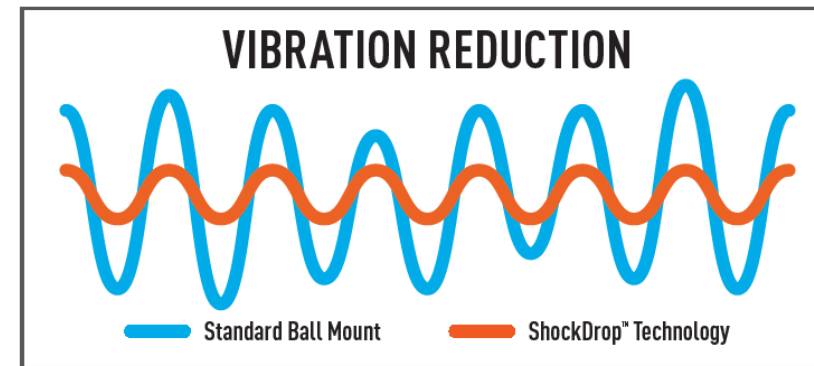
## Rebellion™ XD Adjustable Ball Mount

- Dynamic, adaptive suspension ball mount featuring **ShockDrop™ technology**
- Dampens jerking and jarring from bumps and potholes for smoother towing
- Cushioned isolator reduces rattling and vibration for a more comfortable ride
- Increases driver control by reducing tendency for trailer sway
- Improved trailer control during events of sudden braking



## Rebellion™ XD Adjustable Ball Mount

- Virtually maintenance-free with no airbag or bearings to service
- Minimizes stress on tow vehicle's suspension and brakes for extended longevity
- Lighter-weight design for less stress on the trailer hitch receiver



## Rebellion™ XD Adjustable Ball Mount

- Adjustable, six-position head for precise leveling with different trailers
- Cast steel construction for dependable towing power
- Textured, dark grey teridium finish for a premium look on your vehicle



20K Option with Dual Ball #45955



15K Option with 2-5/16" Ball #45980



10K Option with 2" Ball #45981

## Rebellion™ XD Accessories



Pintle mount attachment  
#45950



15K dual-ball attachment  
#45952



20K dual-ball attachment  
#45953



Replacement tongue  
#45940



Hitch and tongue lock set  
#45932



Vertical shank tongue lock  
#45938



Replacement pins  
#45959

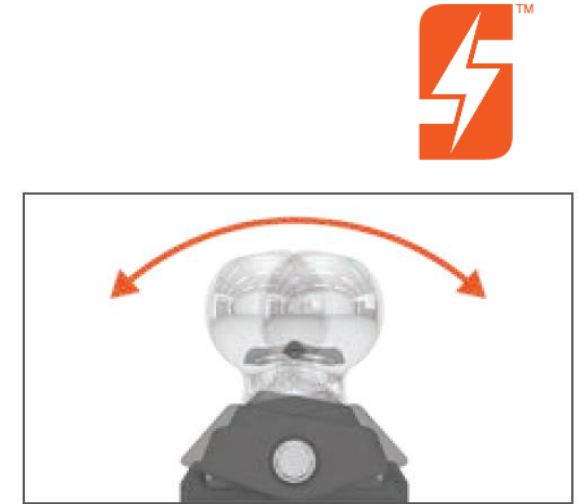


Replacement clip  
#45960



## RockerBall™ Cushion Hitch Trailer Ball

- Dynamic trailer ball featuring **ShockDrop™ technology**
- Retrofits onto most existing ball mounts to improve current towing experience
- Dampens jerking and jarring from bumps and potholes for smoother towing
- Virtually maintenance-free with no airbag or bearings to service
- Grease zerk fitting provides easy, continuous lubrication
- Anti-swivel base keeps RockerBall™ locked in place
- Available with 2" or 2-5/16" ball
- Tested for safety to meet SAE J684 specifications



## RockerBall™ Cushion Hitch Kits

- Includes RockerBall™, ball mount and anti-rattle kit
- Dynamic trailer ball featuring **ShockDrop™ technology**
- Tested for safety to meet SAE J684 specifications



3" drop kit #45143



5" drop kit #45144

**CURT offers a wide variety of ball mounts!**



## Adjustable Channel Mounts

- Available for 2", 2-1/2" and 3" receiver tubes
- Shank can be flipped to maximize rise or drop and precisely level the trailer
- Deep-drop shanks also available
- Rated for up to 21,000 lbs. GTW
- Built-in anti-rattle helps promote quiet towing
- Protected by a highly durable carbide powder coat finish
- Patent# US8,033,563



## Standard Ball Mounts

### Classes 1 & 2

- Fits any 1-1/4" x 1-1/4" receiver tube opening
- Up to 2,000 or 3,500 lbs. GTW



### Classes 3 & 4

- Fits any 2" x 2" receiver tube opening
- GTW capacities ranging from 3,500 up to 12,000 lbs.



## Towing Starter Kits

- All the accessories needed to complement a trailer hitch in one kit
- Includes ball mounts, trailer ball, lock and/or pin & clip
- Select kits also include a rubber hitch tube cover and retail-friendly carrying case
- Loaded ball mounts also available with included factory-torqued trailer ball and pin & clip



## Multi-Ball Mounts

- Allows for quick switching between trailer ball sizes
- Permanently attached trailer balls cannot be loosened or stolen



## Forged Ball Mounts

- Fits 2", 2-1/2" or 3" receiver tube openings
- 3" tested and rated to 21,000 lbs. GTW and 2,800 lbs. TW
- Ideal for CURT class 5 Xtra Duty and Commercial Duty trailer hitches
- Constructed from solid, forged steel for superior strength
- Highly durable carbide black powder coat finish





## Trailer Balls

- Available in standard diameters of 1-7/8", 2" and 2-5/16"
- Fine threads provide superior holding strength
- Tested for safety to meet U.S. VESC specifications



Stainless steel



Chrome-plated steel

## Hitch and Trailer Locks

- Easy-to-operate, 1/4-turn lock activation
- Watertight dust cap prevents internal corrosion
- Two keys included for added convenience
- Space-saving, full-color retail packaging



Coupler latch locks



Hitch locks



Hitch & coupler lock sets



3-piece lock sets

## Universal Tri-Ball Coupler Lock #23082

- Highly theft and tamper-resistant design with built-in safety measures
- Coupler lock can also be used while towing to secure the trailer
- Simple lasso design keeps all components together, avoiding lost pieces
- Glass-filled orange polymer for high strength and increased visibility
- Universal design fits all standard coupler size: 1-7/8", 2" and 2-5/16"
- Easy-to-operate, 1/4-turn lock activation



## Specialized Locks



Spare tire lock #23562



Wheel chock lock #23175

### FITS TIRE SIZES

4.8" - R12	215 / 70R15
7.5" - R16	225 / 75R15
195 / 75R14	235 / 75R15
205 / 60R16	235 / 80R16
205 / 70R15	33" x 12.5" - R15

The text "ATV & UTV Accessories" is centered in a large, bold, black font. A small "UWS" logo is positioned above the ampersand. The background is a semi-transparent image of a black diamond-plate toolbox mounted on the back of a Polaris UTV.The word "POLARIS" is written in a white, bold, sans-serif font. A small white star icon is placed between the "O" and "L". The text is centered at the bottom of the image, overlaid on the rear of a black UTV.

## ATV Towing Accessories



ATV cargo carrier



ATV hitch & adapter



ATV trailer ball

## ATV Tool Boxes

- Designed to mount on an ATV to transport and keep cargo on hand in the field
- Patented RigidCore™ foam-filled lid to maximize strength and prevent binding
- 0.058" extra-thick, one-piece aluminum tub holds heavy tools and cargo
- Stainless steel lock handles for security and corrosion-resistant operation
- MicroSeal™ gasket helps seal out moisture, dust and dirt
- Lid self-opens to 90 degrees for convenient operation and loading
- Carrying handles on the sides for easier portability



## UTV Tool Boxes

- Mounts with vehicle-specific brackets for a custom fit
- Patented RigidCore™ foam-filled lid to maximize strength and prevent binding
- 0.058" extra-thick, one-piece aluminum tub holds heavy tools and cargo
- Stainless steel lock handles for security and corrosion-resistant operation
- MicroSeal™ gasket helps seal out moisture, dust and dirt
- Lid self-opens to nearly 90 degrees for convenient operation and loading



Crossover box



Side mount box





## UTV Tool Boxes



Can-Am Defender



Honda Pioneer 1000



Kawasaki Mule Pro FXT



Polaris Ranger



Yamaha Viking





# MARINE TOWING EQUIPMENT



## Limited Lifetime Warranty

- CURT provides limited lifetime warranty coverage against defects in factory workmanship and materials for CURT products sold by authorized CURT dealers for use by retail (end use) consumers.
- [https://storage.googleapis.com/curt-group-warranties/CURT\\_Warranty\\_2018.02.09.pdf](https://storage.googleapis.com/curt-group-warranties/CURT_Warranty_2018.02.09.pdf)

Product	Workmanship & Materials	Components & Parts	Finishings & Coatings
Hitches	Lifetime	One-year	One-year
Brake controls	Lifetime	One-year	One-year
Electrical and wiring	One-year	One-year	One-year
Other accessories	Lifetime	One-year	One-year



## LIMITED LIFETIME WARRANTY

CURT MANUFACTURING, LLC ("CURT") provides limited lifetime warranty coverage against defects in factory workmanship and materials for CURT® products ("Products") sold by authorized CURT dealers for use by retail (end use) consumers. This Limited Warranty is provided only to the original Product consumer, and applies only to the original installation. This Limited Warranty is not transferable and does not extend or apply to anyone else. For consumers in the U.S., this Limited Warranty gives you specific legal rights; you also may have other rights, which vary from state to state.

This Limited Warranty is the sole and exclusive warranty provided by CURT, and all other warranties and conditions are excluded and disclaimed. **UNDER THE LAW OF CERTAIN STATES, THERE MAY BE NO IMPLIED CONDITIONS OR WARRANTIES FROM CURT APPLICABLE TO YOUR PRODUCT, AND ALL IMPLIED CONDITIONS OR WARRANTIES (INCLUDING ANY WARRANTY OF MERCHANTABILITY OR FITNESS FOR A PARTICULAR PURPOSE) ARE EXCLUDED AND DISCLAIMED WHERE ALLOWED BY LAW.** If implied warranties are imposed under any applicable state law, all such implied warranties are limited to the duration of the applicable provisions of this Limited Warranty. Some states do not allow limitations on how long an implied warranty lasts, so the above limitation may not apply to you.

### COVERED PRODUCTS AND LIMITATIONS

CURT provides the following Limited Warranty coverage:

Product	Workmanship & Materials	Components & Parts	Finishings & Coatings
Hitches	Lifetime	One-year	One-year
Brake controls	Lifetime	One-year	One-year
Electrical and wiring	One-year	One-year	One-year
Other accessories	Lifetime	One-year	One-year

Each of the warranty coverage periods runs from the date of purchase of the Product (even if purchase is required), and applies only to warranted defects that first occur and are reported to CURT within the applicable warranty period. CURT retains the right to determine to its reasonable satisfaction whether any claimed defect is covered by this Limited Warranty.

Certain items are excluded from Limited Warranty coverage by CURT, and this Limited Warranty coverage does not apply to:

- Wear and tear from normal use, including damage from road debris
- Improper product selection, application, installation or maintenance

- Modifications, including the attachment of other hardware or components
- Misuse, abuse, overloading, improper handling or handling, accident
- Corrosion or damage due to environmental conditions

### REMEDIES UNDER THIS LIMITED WARRANTY

If a defect covered by this warranty occurs, CURT will repair or replace the Product, or refund the purchase price, in its sole discretion. This "repair, replacement or refund" remedy is the sole and exclusive remedy under this Limited Warranty. CURT has no responsibility or liability for any incidental or consequential damages, such as loss of use of vehicles or trailers, towing charges, storage charges, the carriage, labor and service charges for removing or reinstalling products, loss of or damage to personal property, or interest or finance charges, all of which are specifically excluded and disclaimed from this Limited Warranty. Some states do not allow the exclusion or limitation of incidental or consequential damages, so the above limitation or exclusion may not apply to you.

### RESPONSIBILITY OF PURCHASER

The Purchaser must have proof of purchase to obtain service under this Limited Warranty. Contact CURT for a Returned Goods Authorization (RGA) and return instructions. CURT will not accept Products unless an RGA has been issued. The Purchaser must deliver the Product to CURT or an authorized CURT dealer along with the RGA number and proof of purchase.

The CURT Limited Warranty policy in effect on the date you purchased your Product determines the applicable warranty coverage, and subsequent or prior CURT warranties are not applicable to your Product. The terms of this Limited Warranty cannot be changed or modified, except by a written agreement signed by an officer of CURT. CURT reserves the right to improve its products through changes in design or materials without being obligated to the owners of the Products of the same or similar models.

Contact information:  
**CURT Headquarters**  
 6208 Industrial Drive  
 Eau Claire, WI 54701  
 800.798.0813