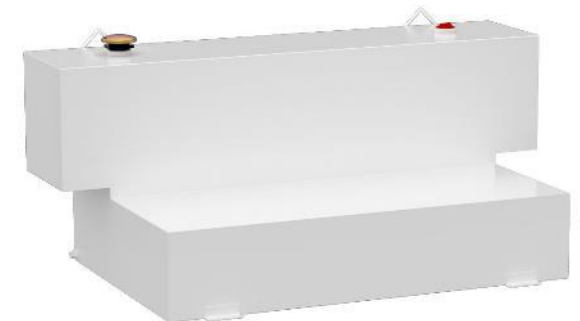
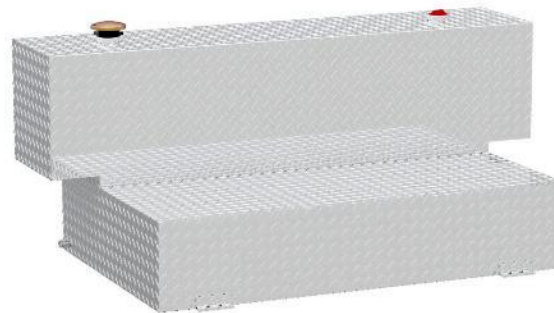


A large, blue, stylized fish logo jumping to the left, followed by the letters "UWS" in a bold, blue, sans-serif font with a registered trademark symbol.

Transfer Tanks

Hammerhead-Style Transfer Tanks

- Fits all full-size trucks, featuring a narrow base to fit between wheel wells
- Available in combo and L-shape configurations
- Aluminum and steel options in gloss black, matte black, white powder coat and bright aluminum
- 100-gallon tank capacity



Steel-Aluminum Combo Transfer Tanks

- Industry-first steel-aluminum combo weighs less than full-steel models
- Unique, smooth finish offers a sleek look compared to diamond plate
- Heavy-duty 14-gauge steel tank is 100% pressure-tested for safety
- .080" thick aluminum tool box is lightweight and non-corrosive
- Transfers diesel or other non-flammable liquids to on-site vehicles or equipment



Aluminum
tool box →

Steel tank →



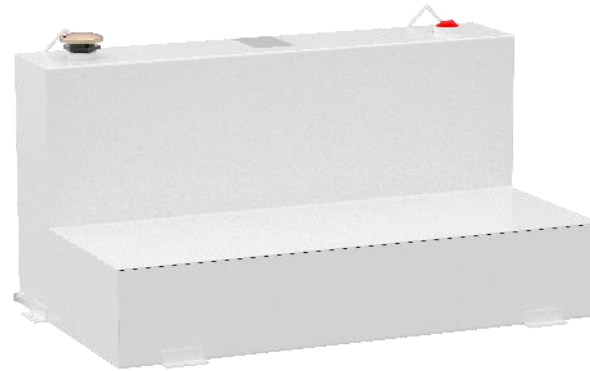
Steel-Aluminum Combo Transfer Tanks

- Built-in tool box provides added storage without reducing truck bed space
- Patented RigidCore™ foam-filled lid to maximize strength and prevent binding
- Stainless steel lock handles with connecting rod for operation from either side
- MicroSeal™ gasket helps seal out moisture, dust and dirt
- Lid self-opens to 90 degrees and self-closes for convenient operation
- 5/16" nylock machine screws mount the box to the tank (no isolators needed)



All Steel Transfer Tanks

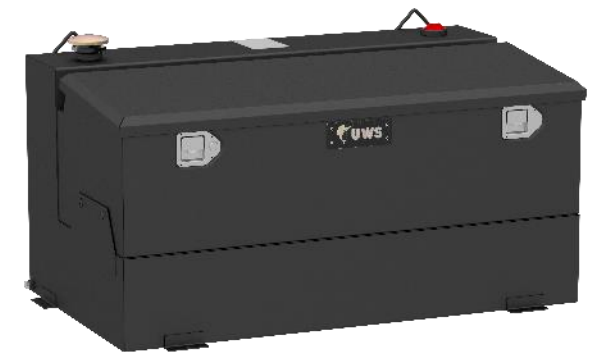
- Also available in L-shaped and rectangular
- Lockable, commercial-grade vented cap with reinforced collar for added security
- Built-in drain plug for easy and complete emptying as needed
- 1/8" steel tabs for a solid install and built-in lift hooks for easy relocation
- Internal baffles for extra strength and an even flow of liquid
- These tanks are DOT-compliant for transporting Class 3 combustible fuels only, such as diesel



L-shaped



Rectangular



Combo





TRANSFER TANKS



Aluminum Transfer Tanks

- Designed to transfer non-flammable liquids to on-site vehicles and equipment (including diesel fuel)
- Heavy-duty aluminum alloy provides maximum protection and durability
- Commercial-grade vented cap for proper ventilation
- Internal baffles for added extra strength and an even flow of liquid
- Drain plug allows for easy emptying whenever necessary
- Multiple tank sizes available for a custom fit on each truck application
- These tanks are DOT-compliant for transporting Class 3 combustible fuels only, such as diesel



L-shaped



Combo



Rectangular





TRANSFER TANKS



Aluminum Combo Transfer Tanks

- Built-in tool box provides added storage without reducing truck bed space
- Patented RigidCore™ foam-filled lid to maximize strength and prevent binding
- Stainless steel lock handles for security and corrosion-resistant operation
- Connecting rod allows for convenient operation from driver or passenger side
- Interior rod enclosure helps prevent bending or jamming of lock system
- MicroSeal™ gasket helps seal out moisture, dust and dirt
- Lid self-opens to 90 degrees for convenient operation and loading





TRANSFER TANKS



Limited Lifetime Warranty

- UWS provides limited lifetime warranty coverage against defects in factory workmanship and materials for UWS products sold by authorized UWS dealers for use by retail (end use) consumers.
- https://storage.googleapis.com/uws/docs/UWS_Warranty.pdf

Product	Workmanship & Materials	Components & Parts	Finishings & Coatings
All storage boxes	Limited lifetime	One-year	One-year
Other accessories	Lifetime	One-year	One-year



LIMITED LIFETIME WARRANTY

UWS ("UWS") provides limited lifetime warranty coverage against defects in factory workmanship and materials for UWS® products ("Products") sold by authorized UWS dealers for use by retail (end use) consumers. This Limited Warranty is provided only to the original Product consumer, and applies only to the original installation. This Limited Warranty is not transferable and does not extend or apply to anyone else. For consumers in the U.S.: this Limited Warranty gives you specific legal rights; you also may have other rights, which vary from state to state.

This Limited Warranty is the sole and exclusive warranty provided by UWS, and all other warranties and conditions are excluded and disclaimed. **UNDER THE LAW OF CERTAIN STATES, THERE MAY BE NO IMPLIED CONDITIONS OR WARRANTIES FROM UWS APPLICABLE TO YOUR PRODUCT, AND ALL IMPLIED CONDITIONS OR WARRANTIES (INCLUDING ANY WARRANTY OF MERCHANTABILITY OR FITNESS FOR A PARTICULAR PURPOSE) ARE EXCLUDED AND DISCLAIMED WHERE ALLOWED BY LAW.** If implied warranties are imposed under any applicable state law, all such implied warranties are limited to the duration of the applicable provisions of this Limited Warranty. Some states do not allow limitations on how long an implied warranty lasts, so the above limitation may not apply to you.

COVERED PRODUCTS AND LIMITATIONS

UWS provides the following Limited Warranty coverage:

Product	Workmanship & Materials	Components & Parts	Finishings & Coatings
All storage boxes	Limited lifetime	One-year	One-year
Other accessories	Lifetime	One-year	One-year

Each of the warranty coverage periods runs from the date of purchase of the Product (proof of purchase is required) and applies only to warranted defects that first occur and are reported to UWS within the applicable warranty period. UWS retains the right to determine to its reasonable satisfaction whether any claimed defect is covered by this Limited Warranty.

Certain items are excluded from Limited Warranty coverage by UWS, and this **Limited Warranty coverage does not apply to:**

- Wear and tear from normal use, including damage from road debris
- Improper product selection, application, installation or maintenance
- Modifications, including the attachment of other hardware or components

- Misuse, abuse, overloading, improper trailing or hauling, accident
- Corrosion or damage due to environmental conditions

REMEDIES UNDER THIS LIMITED WARRANTY

If a defect covered by this warranty occurs, UWS will repair or replace the Product, or refund the purchase price, in its sole discretion. This "repair, replacement or refund" remedy is the **sole and exclusive remedy** under this Limited Warranty. UWS has **no responsibility or liability for any incidental or consequential damages**, such as loss of use of vehicles or trailers, towing charges, storage charges, labor and service charges for removing or reinstalling Products, loss of or damage to personal property, or interest or finance charges, all of which are specifically **excluded and disclaimed** from this Limited Warranty. Some states do not allow the exclusion or limitation of incidental or consequential damages, so the above limitation or exclusion may not apply to you.

RESPONSIBILITY OF PURCHASER

The Purchaser must have proof of purchase to obtain service under this Limited Warranty. Contact UWS for a Returned Goods Authorization (RGA) and return instructions; UWS will not accept Products unless an RGA has been issued. The Purchaser must deliver the Product to UWS or an authorized UWS dealer along with the RGA number and proof of purchase.

The UWS Limited Warranty policy in effect on the date you purchased your Product determines the applicable warranty coverage, and subsequent or prior UWS warranties are not applicable to your Product. The terms of this Limited Warranty cannot be changed or modified, except by a written agreement signed by an officer of UWS. UWS reserves the right to improve its products through changes in design or materials without being obligated to the owners of the Products of the same or similar models.

Contact information:
UWS Headquarters
 6208 Industrial Drive
 Eau Claire, WI 54701
 833.387.7720