



Bring It[®]



TOWING ELECTRICAL

Scan for live digital version



Help your customers get plugged in and Bring It[®]! CURT electrical products are designed to deliver unsurpassed levels of performance, reliability and durability.

CURT applies surface mount technology (SMT), the most up-to-date technology for circuitry today, to a full line of taillight converters and to all custom vehicle-to-trailer wiring harnesses with built-in converters. SMT components offer low resistance, reduced heat generation and long life cycles.

In addition to using top-quality components, 100% of our converters and custom wiring products are strenuously tested, and a vast majority of them are made in the USA.

CURT's electrical lineup also includes advanced time-based and inertia-based brake controls, adapters, converters, plugs & sockets, breakaway kits and more. Our philosophy at CURT is to provide 'the perfect fit'; that is why our products are plug-and-play, easy to install and superior in function.

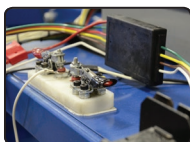
Benefits of CURT's electrical testing



Every unit is tested on an automated sequence tester



CURT tests full functionality on every component



Full short-circuit protection testing



TOWING ELECTRICAL SUB-CATEGORY COLOR GUIDE

CURT Manufacturing has identified six sub-categories within **TOWING ELECTRICAL**. These make it easy for consumers to quickly locate the products needed to properly wire their vehicle and trailer. Each of the six categories are color-coded and easily visible on all CURT retail packaging.

**BRAKE
CONTROLS**

**ELECTRICAL
CONVERTERS**

**CUSTOM
WIRING**

**PLUGS &
SOCKETS**

**ELECTRICAL
ADAPTERS**

**ELECTRICAL
TESTERS**

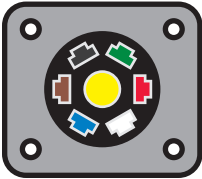
PLUGS & SOCKETS AND ADAPTER WIRING GUIDE

- Rear views of plugs & sockets shown in the representative illustrations below
- Colors illustrated may not represent the colors found on the tow vehicle or trailer
- For more information on plug & socket and adapter types see page 17

7-Way RV Blade*

Vehicle Side

Trailer Side



Function	Color
+12 volt	Black
Right turn / brakes	Brown
Electric brakes	Blue
Ground	White
Left turn / brakes	Red
Taillights	Green
Reverse lights	Yellow

* Traditional Configuration

6-Way Round

Vehicle Side

Trailer Side



Function	Color
Taillights	Brown
Ground	White
Left turn / brakes	Yellow
Right turn / brakes	Green
Electric brakes	Blue
+12 volt	Black

4-Way Flat

Vehicle Side

Trailer Side



Function	Color
Right turn / brakes	Green
Left turn / brakes	Yellow
Taillights	Brown
Ground	White

WIRING SYSTEMS

- For more detailed information and diagrams of wiring systems see page 16

Two-Wire Systems

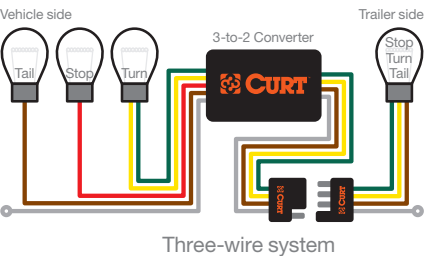
Still common in the automotive industry and the simplest form of trailer wiring, this system sends the stop / turn signal along one wire, while the tail signal is separate.

Three-Wire Systems

This system is the most common in the automotive industry and is simple enough to wire with a converter of choice. The stop, tail and turn signals are all sent on separate wires going into the converter, which then converts the signals to a two-wire system.

PWM Systems

More and more vehicles on the market today use pulse width modulation (PWM) wiring systems, sometimes called 'multiplex' systems. These are systems that vary the signal intensity over a single wire to control more than one lighting function. There are two types: Stop / Turn / Tail (STT) and Stop / Tail (ST).



HOW TO SELECT A BRAKE CONTROL

The brake control is one of the most important inventions to come to the towing industry. It allows the driver to safely traverse the countryside, towing a large trailer load, without having to worry about being pushed down the side of a mountain by the weight of his or her trailer. That being said, there are a lot of factors to consider when selecting a brake control. The following questions will help you determine which brake control is the best fit for your customer.

How often do they tow?

Often

If your customer tows frequently or commercially, it is a good suggestion that he or she use an inertia-based control such as the TriFlex or Reflex. TriFlex is the preferred control as it uses triple-axis accelerometer technology to sense changes in inertia. The Reflex, on the other hand, uses two axes.

Rarely

If your customer tows only a few times a year, a time-based control, such as the Discovery or Venturer, will work well for his or her needs.

What are they planning on towing?

Heavy-Duty

If your customer is planning to tow livestock, such as cattle or horses, an inertia-based control is ideal. Inertia-based controls perform much smoother stops, resulting in less stress on the animals.

Light-Duty

If your customer is planning to tow a light, family pop up camper, a time-based control will suit his or her just fine.

Inertia- and Time-Based Brake Controls

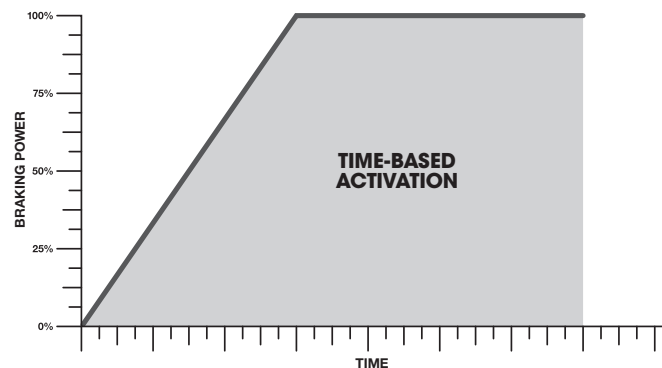
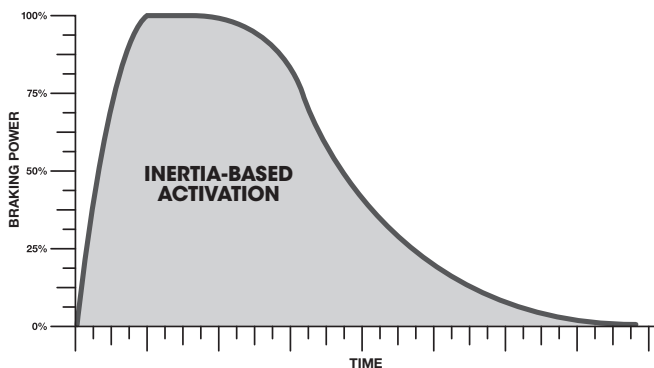
There are many different brake controls available on the market, but all can be classified into two activation types: inertia-based activation and time-based activation. CURT offers two of each type. The TriFlex and Reflex are inertia-activated controls, while the Discovery and Venturer are time-activated controls. Knowing the difference between inertia-based and time-based brake controls is key for best meeting your customer's needs.

Inertia-based activation

Inertia-activated brake controls use accelerometers to measure the change in velocity of the tow vehicle when braking on multiple grades. An accelerometer is basically a highly accurate digital version of a pendulum that can measure inertia on more than one axis. The advantage of inertia-based activation is that once calibrated, the control can output the perfect amount of power needed to come to a smooth stop in any towing situation.

Time-based activation

Time-activated brake controls measure the amount of time the driver's foot is on the brake pedal and apply brake pressure to the trailer brakes accordingly. The longer the brake pedal is pressed, the stronger the signal will be that is sent to the trailer brakes. The advantage of time-based activation is that there is little calibration needed during the initial setup of the control.

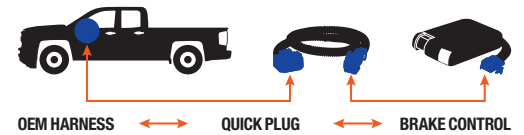


BRAKE CONTROLS

BRAKE CONTROLS

- All brake controls are quick plug equipped, making installation fast and easy
- Easily calibrated for all towing needs
- Attractive, full-color retail packaging
- **Limited lifetime warranty**

QUICK PLUG EQUIPPED



51140 - TriFlex



51130 - Reflex



51120 - Discovery



51110 - Venturer

Model Name	Pkg#	6-pack Bulk#	Spare Bracket#	Maximum Axles	Activation Method	Display	Mount Angles	Level Adjust	Warranty
TriFlex	51140	51142	51144	1 - 4	Inertia tri-axis accelerometer	Digital	-20° to +70°*	Auto	Limited lifetime
Reflex	51130	51132	--	1 - 4	Inertia dual-axis accelerometer	Digital	-20° to +70°*	Auto	Limited lifetime
Discovery	51120	51122	51124	1 - 4	Time-based	Digital	Any	Auto	Limited lifetime
Venturer	51110	--	51114	1 - 3	Time-based	LED	Any	Auto	Limited lifetime

* TriFlex and Reflex can be mounted up to 20° off the center line of the vehicle and / or up to 20° off horizontal laterally

BRAKE CONTROLS

TRIFLEX™ BRAKE CONTROL

- Triple-axis, motion-sensing accelerometer for highly responsive, smooth stops
- Third axis provides precise, dynamic brake power adjustment when going up or down an incline
- Nine levels of sensitivity adjustment for varying trailer loads or driving conditions
- Adjustable power output
- Digital display shows power adjustments in 0.1 increments
- Dual polarity and short circuit protection
- Operates 2 - 8 brakes (1 - 4 axles)
- User-selectable options on manual activation:
 - Power output (100% or limited to preset power)
 - Trailer brake light activation
- Tow vehicle 'low voltage' and trailer disconnect indicators
- Compact size: 3 1/4" wide, 4" deep, 7/8" tall
- Automatic leveling and calibration



51140

- Compatible with low voltage or pulse width modulation (PWM) systems
- Mounts in a variety of angles, above or below the dash, to increase unit accessibility and display readability
- Auto sleep mode prevents battery drain after five minutes of idle time
- Mounting hardware included
- Optional spare bracket allows for convenient use of the same brake control in multiple vehicles
- Patent pending



4.0 User input power adjustment setting



4.0 → **3.2** Automatic power reduction for incline



4.0 → **5.3** Automatic power increase for decline

Note: Values represented are for illustration only. The actual preset and adaptive values may differ from those shown here.

BRAKE CONTROLS

REFLEX™ BRAKE CONTROL

- Dual-axis, motion-sensing accelerometer for smooth stops
- Self-leveling and simple push-button calibration
- Automatically adjusts brake output when going up or down an incline
- Adjustable power output
- Digital display shows power adjustments in 0.1 increments
- Operates 2 - 8 brakes (1 - 4 axles)
- Compatible with anti-lock brakes and cruise control
- Mounts in a variety of angles, above or below the dash, to increase unit accessibility and display readability
- Mounting hardware included



MADE IN USA



51130

BRAKE CONTROLS

DISCOVERY™ BRAKE CONTROL

- Increases brake power over a preset amount of time
- Digital display
- Mounts anywhere in vehicle
- No leveling required
- No internal moving parts
- Adjustable power and ramp time
- Compatible with anti-lock brakes and cruise control
- Operates 2 - 8 brakes (1 - 4 axles)
- Mounting hardware included
- Optional spare bracket allows for convenient use of the same brake control in multiple vehicles



51120

BRAKE CONTROLS

VENTURER™ BRAKE CONTROL

- Increases brake power over a preset amount of time
- LED indicator lengthens as controller applies power
- Mounts anywhere in vehicle
- No leveling required
- No internal moving parts
- Adjustable power and ramp time
- Compatible with anti-lock brakes and cruise control
- Operates 2 - 6 brakes (1- 3 axles)
- Mounting hardware included
- Optional spare bracket allows for convenient use of the same brake control in multiple vehicles

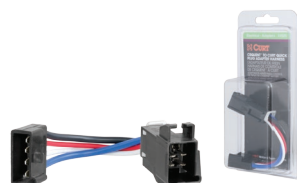


51110

BRAKE CONTROLS

COMPETITOR-TO-CURT ADAPTER

- Allows Tekonsha, Reese, Draw-Tite and Pro Series vehicle-specific brake control harnesses to be used with CURT brake controls



51520

Pkg#	Description
51520	Converts competitors brake control to CURT
The brands listed above are registered trademarks of Cequent Consumer Products™	

BRAKE CONTROLS

QUICK PLUG WITH PIGTAILS

- Plug end connects to brake control
- Splice end connects to vehicle
- For vehicles without a factory plug



51515



51516

Bulk#	Pkg#	Description
51515	51516	Quick plug with 24" pigtails

SELECTING A BRAKE CONTROL HARNESS

Connecting the brake control

In many cases, the only thing needed to connect a brake control to the customer's vehicle is a brake control adapter harness. Application-specific harnesses can be found on page 188 or at curtmfg.com. Brake control adapter harnesses feature a vehicle-specific housing that plugs directly from the vehicle into the brake control.



Brake control harness location designators

BH1 - Under dash, left of steering column, near emergency brake pedal

BH2 - Under dash, near center console

BH3 - Under dash, in junction box left of steering column

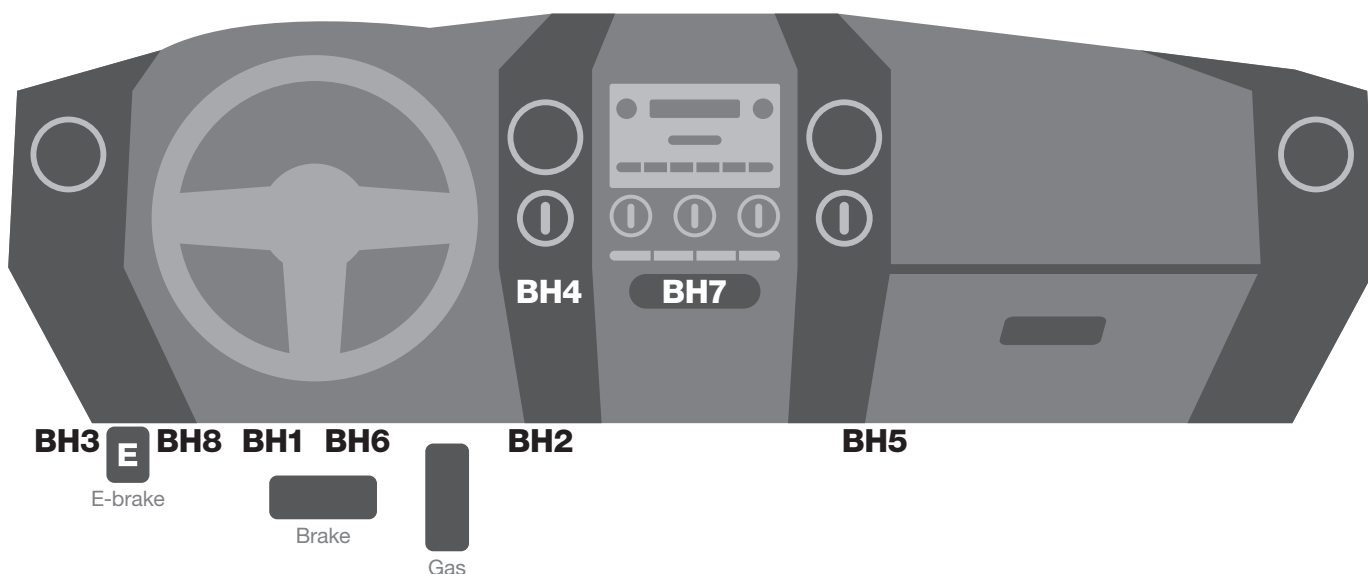
BH4 - Behind storage pocket, above ashtray

BH5 - Under dash, behind center access panel on passenger side

BH6 - Under dash, near brake pedal

BH7 - Behind storage pocket in center of dash

BH8 - Under dash, to right of emergency brake pedal



UNIVERSAL WIRING KIT FOR BRAKE CONTROLS

- For tow vehicles not equipped with factory tow package wiring
- Brake control and trailer connector are sold separately
- For 2 - 8 brake systems (1 - 4 axles)
- Attractive, full-color retail packaging



Pkg#	Includes							
51500	Duplex wire, 10 gauge Length: 10 feet	Cross-linked wire, 10 gauge Length: 20 feet	Circuit breaker, 30-amp	3/8" ring terminals, 12-10 gauge Qty: 2	10 ring terminals, 12-10 gauge Qty: 2	1/2" ring terminals, 12-10 gauge Qty: 2	Butt connectors, 12-10 gauge Qty: 3	Cable ties, 8 1/2" Qty: 8

* Designed for use with 51515 / 51516

BRAKE CONTROL HARNESSES WITH QUICK PLUG

- Quick plug harnesses install in less than 10 minutes
- Wire colors match standard brake control harnesses
- Includes connector for factory plug, 24" of 12 gauge wire and slit-loom sleeve

Make / Model	Style	Years	Bulk#	Pkg#	Location
Buick					
Enclave	--	08 - 12	51422	51423	BH1
Cadillac					
Escalade	Including EXT and ESV	03 - 06	51352	51353	BH3
	Including EXT	2002	51342	51343	BH3
Chevrolet / GMC					
Acadia	--	07 - 15	51422	51423	BH1
Avalanche	--	03 - 06	51352	51353	BH3
	--	2002	51342	51343	BH3
Silverado / Sierra	--	14 - 15	51451	51452	BH1
	New body	07 - 13	Vehicle is not equipped with a brake control harness. Hard wire part# 51515 to blunt-cut wires under dash		
	Classic body	2007	51352	51353	BH3
		03 - 06	51352	51353	BH3
		99 - 02	51342	51343	BH3
Tahoe	--	2015	51352	51353	BH3
	--	03 - 06	51352	51353	BH3
	New body w/ amber turn signals	00 - 02	51342	51343	BH3
Suburban, Yukon, Yukon XL & Denali	--	03 - 06	51352	51353	BH3
	New body w/ amber turn signals	00 - 02	51342	51343	BH3
Traverse	w/ factory tow package	09 - 15	51422	51423	BH3
Chrysler					
Aspen	w/ factory tow package	07 - 09	51332	51333	BH1
Dodge / RAM					
Dakota	w/ factory tow package	97 - 11	51332	51333	BH1
Durango	w/ factory tow package	11 - 15	51446	51447	BH8
		98 - 09	51332	51333	BH1
RAM 1500	--	13 - 14	--	51453	BH8
		10 - 12	51438	51439	BH8
RAM 2500	--	13 - 14	--	51453	BH8
		10 - 12	51438	51439	BH8
RAM 3500	--	13 - 14	--	51453	BH8
		10 - 12	51438	51439	BH8
RAM Pickup	All full-size pickups	95 - 09	51332	51333	BH1
Ford					
Bronco	Full-size	94 - 96	51322	51323	BH2
		92 - 93	51312	51313	BH1
Econoline Van	--	09 - 14	51432	51433	BH5
		92 - 08	51322	51323	BH1
Excursion	--	00 - 05	51322	51323	BH2
Expedition	--	13 - 14	51432	51433	BH5
		97 - 12	51322	51323	BH2
Explorer	w/ factory tow package	02 - 11	51322	51323	BH2
F-150	--	09 - 14	51436	51437	BH7
	New body style	04 - 08	51322	51323	BH2
	Heritage Edition	2004	51322	51323	BH2
F-150 / F-250 Light Duty	--	94 - 03	51322	51323	BH2

Brake control harness location designators

See page 187 for diagram

- BH1 - Under dash, left of steering column, near emergency brake pedal
- BH2 - Under dash, near center console
- BH3 - Under dash, in junction box left of steering column
- BH4 - Behind storage pocket, above ashtray
- BH5 - Under dash, behind center access panel on passenger side
- BH6 - Under dash, near brake pedal
- BH7 - Behind storage pocket in center of dash
- BH8 - Under dash, to right of emergency brake pedal



Make / Model	Style	Years	Bulk#	Pkg#	Location
Ford (Continued)					
F-250 / F-350 Super Duty	--	08 - 14	51432	51433	BH5
		05 - 07	51372	51373	BH4
		99 - 04	51322	51323	BH2
F-250 / F-350 Heavy Duty	--	1997	51322	51323	BH2
F-150 / F-250 / F-350	--	94 - 96	51322	51323	BH2
F-series full-size truck	--	92 - 93	51312	51313	BH1
F-450 / F-550 Super Duty	--	08 - 14	51432	51433	BH5
		05 - 07	51372	51373	BH4
Flex	w/ factory tow package	12 - 13	51436	51437	BH7
		09 - 11	51322	51323	BH2
Windstar	w/ factory tow package	95 - 03	51322	51323	BH2
Honda					
Pilot	--	09 - 14	51392	51393	BH1
Ridgeline	w/ factory tow package	06 - 14	51392	51393	BH1
Hummer					
H2	--	03 - 07	51352	51353	BH3
Infiniti					
QX56	--	04 - 13	51382	51383	BH1
Jeep					
Grand Cherokee	w/ factory tow package	11 - 14	51446	51447	BH8
Kia					
Borrego	--	09 - 11	51442	51443	BH1
Land Rover					
LR3	--	05 - 09	51322	51323	BH2
LR4	--	10 - 14	51322	51323	BH2
Range Rover	Including Sport	05 - 15	51322	51323	BH2
Range Rover Evoque	--	12 - 14	51322	51323	BH2
Lexus					
GX 460	--	10 - 12	51362	51363	BH1
GX 470	--	03 - 11	51362	51363	BH1
LX 470	--	03 - 07	51362	51363	BH1
LX 570	--	2013	51362	51363	BH1
		08 - 11			
Lincoln					
Mark LT	--	06 - 08	51322	51323	BH2
MKT	w/ factory tow package	12 - 13	51436	51437	BH7
		10 - 11	51322	51323	BH2
Navigator	--	13 - 14	51432	51433	BH5
		98 - 12	51322	51323	BH2
Mercury					
Mountaineer	w/ factory tow package	02 - 10	51322	51323	BH2
Nissan					
Armada	--	04 - 14	51382	51383	BH1
Frontier	--	05 - 14	51382	51383	BH1
Pathfinder	--	05 - 15	51382	51383	BH1
Titan	--	04 - 14	51382	51383	BH1
Xterra	--	05 - 14	51382	51383	BH1
Saturn					
Outlook	--	07 - 09	51422	51423	BH1
Toyota					
4Runner	--	03 - 15	51362	51363	BH1
Land Cruiser	--	13 - 14	51362	51363	BH1
		03 - 11			
Sequoia	--	03 - 14	51362	51363	BH1
Tacoma	--	07 - 15	51362	51363	BH1
Tundra	--	03 - 14	51362	51363	BH1



51453



51362

51363



51372

51373



51422

51423



51451

51452



On vehicles with two-wire electrical systems that require a powered converter, the converter's red wire is not used as a stoplight connection and needs to be grounded.



ELECTRICAL CONVERTERS

TAILLIGHT CONVERTERS

- Most CURT converters use surface mount technology (SMT)
- No heavy-duty flasher required
- Packaged kits include powered converter wiring kit part number 55151
- Attractive, full-color retail packaging



56146



59146

Bulk#	Pkg#	Pkg Kit#	30-Pack Boxed Bulk#	SMT	Battery-Powered	Circuit-Protected	Output Type	Snap Locks	Left / Right Signal Circuit	Taillight Circuit
Three-Wire to Two-Wire for Towing a Vehicle										
--	56146	59146	56146030	Yes	Yes	Yes	4-way flat	4	3.0 amps	6.0 amps
55177	--	--	--	No	No	No	4-way flat	None	2.1 amps	5.0 amps
--	55178	--	--	No	No	No	4-way flat	None	2.1 amps	5.0 amps
--	55179*	--	--	No	No	No	4-way flat	None	2.1 amps	5.0 amps
--	55130	--	55133	No	No	No	4-way flat	4	2.1 amps	5.0 amps
--	56130	--	--	Yes	No	No	4-way flat	4	3.0 amps	5.0 amps
--	--	--	56132	Yes	No	No	4-way flat	4	3.0 amps	5.0 amps
--	56175	--	--	Yes	No	Yes	4-way flat	4	3.0 amps	5.0 amps
--	56187	59187	--	Yes	Yes	No	4-way flat	4	3.0 amps	5.0 amps
--	56190	59190	--	Yes	Yes	Yes	4-way flat	4	7.5 amps	7.5 amps
58240	--	--	--	No	No	No	Splice	None	2.1 amps	5.0 amps
For PWM ST Systems										
--	56200	59200	--	Yes	Yes	Yes	4-way flat	4	3.0 amps	6.0 amps
For PWM STT Systems										
--	56201	59201	--	Yes	Yes	Yes	4-way flat	4	3.0 amps	6.0 amps
For Low-Side Switching Systems										
--	56195	--	--	Yes	Yes	No	4-way flat	4	2.1 amps	4.2 amps
Two-Wire to Three-Wire for Towing a Vehicle										
--	56196	--	--	Yes	No	No	Splice	None	2.1 amps	5.0 amps
* Includes converter, 4-flat loop, four snap locks and four wire connectors										

Benefits of surface mount technology (SMT)

Minimum Heat Generation

High-quality SMT components create very little resistance, reducing heat, limiting voltage drop and extending life.

Automated Manufacturing

SMT manufacturing is automated, ensuring high reliability.

Maximum Light Intensity

SMT circuitry efficiency ensures maximum trailer light intensity and life.

Fully Tested

SMT circuits are optically and load-tested before being used in a wiring harness. They are load-tested again before being packaged and shipped.

Durability and Performance

SMT offers improved mechanical performance under shake and vibration conditions, common while towing.

MULTI-FUNCTION
TAILLIGHT CONVERTER

- Uses surface mount technology (SMT)
- Works with two-wire, three-wire and PWM wiring systems
- Potted Enclosure
Significantly increases water resistance
- Current Sense
Allows microcontroller to rapidly react to unwanted conditions such as overload
- Low-Voltage Operation
Allows function down to seven volts
- Microprocessor controlled
- Provides improved overload and thermal protection
- Works on PWM-equipped vehicles and filters unwanted input signals
- Protected from short circuits
- Attractive, full-color retail packaging



Pkg#	SMT	Battery-Powered	Circuit-Protected	Output Type	Snap Locks	Left / Right Signal Circuit	Taillight Circuit	55152 Included
56236* NEW	Yes	Yes	Yes	4-way flat	4	5.0 amps	7.5 amps	No
59236 NEW	Yes	Yes	Yes	4-way flat	4	5.0 amps	7.5 amps	Yes

* Use powered converter wiring kit part number 55152, see below

POWERED CONVERTER
WIRING KITS

- For use with battery-powered taillight converters
- Available in 10-amp and 15-amp kits
- Attractive, full-color retail packaging



Pkg#	Amps	Includes						
55151	10	Cross-linked wire, 12 gauge Length: 20 feet	In-line fuse holder, 10-amp (red)	ATC10 fuse, 10-amp (red)	3/8" ring terminal	Butt connector, 12-15 gauge	Cable tie, 14 1/2"	Cable ties, 6" Qty: 8
55152* NEW	15	Cross-linked wire, 12 gauge Length: 20 feet	In-line fuse holder, 15-amp (yellow)	ATC10 fuse, 15-amp (blue)	3/8" ring terminal	Butt connector, 12-15 gauge	Cable tie, 14 1/2"	Cable ties, 6" Qty: 8

* Use with converter part number 56236, see above

CUSTOM WIRING

CUSTOM VEHICLE-TO-TRAILER WIRING HARNESSES

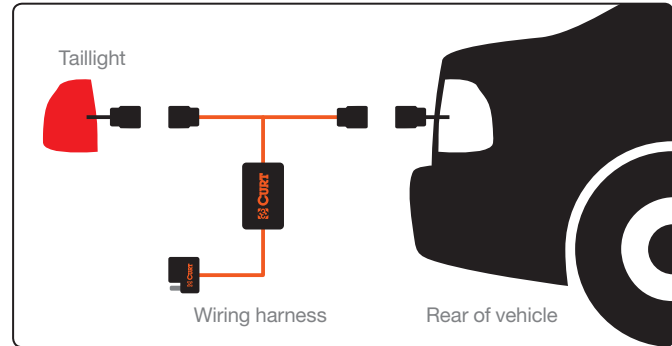
A CURT custom vehicle-to-trailer wiring harness (also called a T-connector) is a simple, plug-and-play electrical device that eliminates the need for cutting, splicing and soldering when installing vehicle-to-trailer wiring. Many times, the

customer's vehicle will not come ready to tow. Unless they purchased their vehicle with a towing package, it is likely not equipped with a trailer wiring connector. This is where CURT's custom vehicle-to-trailer wiring harnesses come into play.

Examples of multi-plug harnesses



Example of a wiring harness installation



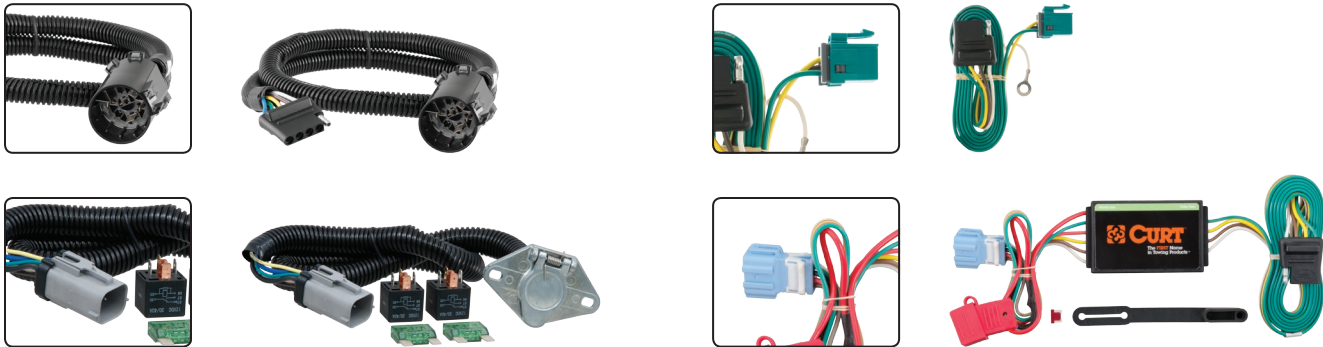
CUSTOM WIRING

CUSTOM ORIGINAL EQUIPMENT VEHICLE-TO-TRAILER CONNECTORS

In some cases, while a vehicle may not be equipped with an electrical connector, it will have an original equipment socket, provided by the manufacturer, that is specifically intended for hooking up an electrical connector for towing. For this wiring option, CURT offers custom original

equipment vehicle-to-trailer connectors. These connectors, like our custom vehicle-to-trailer wiring harnesses, eliminate difficult cutting, splicing and soldering. They fit a variety of makes and models and are available with 4-way or 5-way flat, 6-way round or 7-way RV blade output options.

Examples of single-plug connectors



Benefits of surface mount technology (SMT)

Minimum Heat Generation

High-quality SMT components create very little resistance, reducing heat, limiting voltage drop and extending life.

Automated Manufacturing

SMT manufacturing is automated, ensuring high reliability.

Maximum Light Intensity

SMT circuitry efficiency ensures maximum trailer light intensity and life.

Fully Tested

SMT circuits are optically and load-tested before being used in a wiring harness. They are load-tested again before being packaged and shipped.

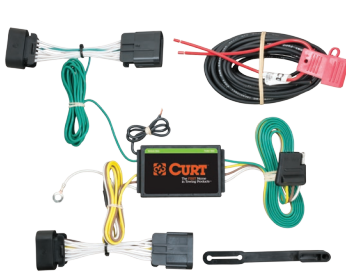
Durability and Performance

SMT offers improved mechanical performance under shake and vibration conditions, common while towing.

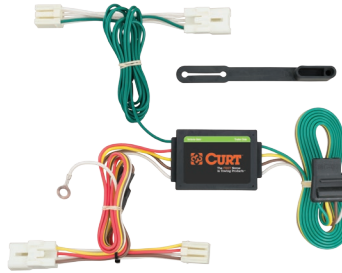
**CUSTOM
WIRING**

4-WAY FLAT WIRING HARNESSES & CONNECTORS

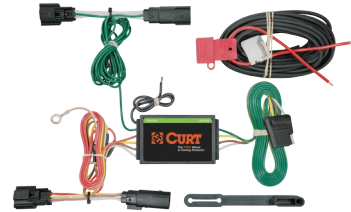
- The standard custom wiring option, also known as a T-connector
- State-of-the-art surface mount technology (SMT)
- See the application guide on page 42 or the numerical custom wiring listing on page 334 for specific part numbers
- Attractive, full-color retail packaging



56253



56254

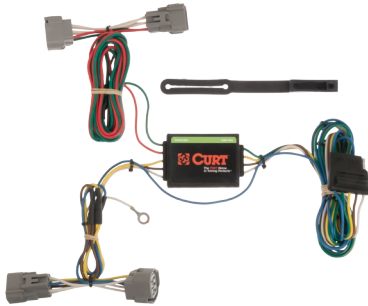


56255

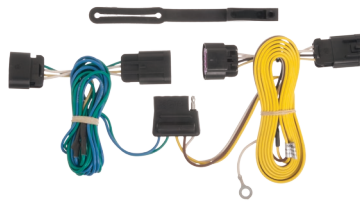
**CUSTOM
WIRING**

5-WAY FLAT WIRING HARNESSES & CONNECTORS

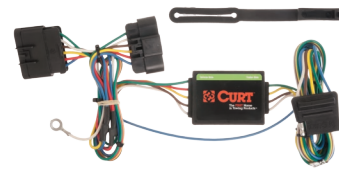
- Ideal for trailers with surge brakes, commonly found on boat trailers
- Product line targets popular light-duty trucks and SUVs
- State-of-the-art surface mount technology (SMT)
- 56584 adds a 5-way flat to the factory 7-way system, vehicle applications can be found on page 197
- 56515 is a factory replacement 5-way flat, vehicle applications can be found on page 197
- Attractive, full-color retail packaging



56513



56594



56510

Pkg#	Make	Model	Years	Install Time	Battery-Powered
56510	Chevrolet	Colorado	04 - 12	10 min	No
	GMC	Canyon	04 - 12		
	Isuzu	I-Series	06 - 08		
56594	Chevrolet	Equinox	10 - 15	20 min	No
	GMC	Terrain	10 - 15		
56513	Toyota	T-100	93 - 98	10 min	No
		Tacoma	05 - 15		
56515	See page 197 for applications			5 min	No
56584	See page 197 for applications			5 min	No



56584



56515

CUSTOM WIRING

BONDED 4-WIRE SPOOLS

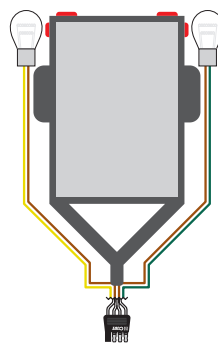
- Ideal for trailer wiring or similar applications
- Attractive, full-color retail packaging



57001



57220



57220
wiring illustrated

Pkg#	Gauge	Length	Description
57001	16	25'	Bonded four-wire spool (green, yellow, brown, white)
57220	18	20'	Trailer-end 4-way flat with separate leads for each taillight

CUSTOM WIRING

7-WAY RV BLADE REPLACEMENT HARNESSES

- Replaces the trailer end of any 7-way harness
- Available in three different lengths for various applications
- Attractive, full-color retail packaging



56621



56622



56623

56603

Bulk#	Pkg#	Length	Description
56601	56621	6'	Fits 7-way RV blade socket
56602	56622	8'	Fits 7-way RV blade socket
56603	56623	10'	Fits 7-way RV blade socket

PLUGS & SOCKETS

ORIGINAL EQUIPMENT VEHICLE-TO-TRAILER EXTENSION

- Makes the electrical connections of gooseneck and 5th wheel trailers easy
- Routes existing 7-way plug at rear of vehicle into truck bed
- Long, 7' harness
- Attractive, full-color retail packaging

Pkg#	Length	Fits
56080	7'	7-way RV blade socket



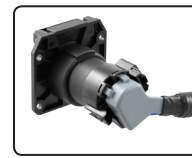
CUSTOM WIRING

CUSTOM VEHICLE-TO-TRAILER WIRING HARNESS EXTENSION

- Adds an additional 7-way RV blade socket to the truck bed while retaining use of the existing 7-way RV blade socket
- Makes the electrical connections of gooseneck and 5th wheel trailers easy by plugging into the factory harness
- Right-angle plug for easy installation
- Long, 7' or 10' harness options
- Attractive, full-color retail packaging



Route 7-way socket
into truck bed



Right-angle plug
for easy installation

Make / Model	Years	7' Pkg#	10' Pkg#
Chevrolet / GMC			
Silverado / Sierra	99 - 15	56070	56000
Dodge / RAM			
Dakota	95 - 10	56071	56001
RAM 1500	09 - 14	56070	56000
	95 - 08	56071	56001
RAM 2500 / 3500	10 - 14	56070	56000
	95 - 09	56071	56001
Ford			
F-150 / F-250 Light Duty	97 - 03	56070	56000
F-150, incl. Heritage Edition	04 - 14	56070	56000
F-250 / F-350 Super Duty	99 - 14	56070	56000
F-450 / F-550 Super Duty	99 - 14	56070	56000
Nissan			
Titan	04 - 14	56070	56000
Toyota			
Tundra	10 - 14	56070	56000



CUSTOM WIRING

PLUGS & SOCKETS

VEHICLE-TO-TRAILER HARNESSES & ORIGINAL EQUIPMENT CONNECTORS

- Products listed fit the applications in the table on page 197
- Fits USCAR-equipped vehicles with factory tow plugs (shown below)
- Attractive, full-color retail packaging



57101



55664



55774



All plug into this
USCAR plug



55515



56515



55384



56584



55415



56415

Pkg#	Plugs Into	Provides	Output
Custom Wiring			
55664	USCAR socket	Two output connections	6-way round and 4-way flat
55774	USCAR socket	Two output connections	7-way RV blade and 4-way flat
55515	USCAR socket	Replacement end	4-way flat
56515	USCAR socket	Replacement end	5-way flat
55384	T's into USCAR socket	Additional connection	Additional 4-way flat
56584	T's into USCAR socket	Additional connection	Additional 5-way flat
Plugs & Sockets			
57101	USCAR socket	Backup alarm	7-way RV blade and 4-way flat
55415	USCAR socket	Replacement for Ford, GM and Nissan vehicles	7-way RV blade
56415	USCAR socket	Replacement for twist-lock brackets	7-way RV blade

CUSTOM WIRING

REPLACEMENT PLUG FOR USCAR

- Replaces damaged or missing USCAR vehicle harnesses
- Retrofits weatherproof USCAR-type 7-way to vehicles not equipped by using CURT part numbers 55415, 55515, 55664, 55774, 56415, 56515 or 57101
- Attractive, full-color retail packaging



56229



Provides this
USCAR plug

Pkg#	Length	Replaces	Provides
56229 NEW	24" wires	Existing vehicle harness connector	USCAR connector end

ELECTRICAL ADAPTERS

DODGE FACTORY HARNESS ADAPTER

- Adapts Dodge harness applications to fit USCAR replacement plugs (pictured below)
- Attractive, full-color retail packaging



57300



Plugs into the
USCAR plug

Pkg#	Adapts	To Fit
57300	Dodge applications	USCAR applications See page 197

VEHICLE-TO-TRAILER HARNESSES & ORIGINAL EQUIPMENT CONNECTORS APPLICATION GUIDE

Make / Model	Style	Years
Buick		
Enclave	--	08 - 15
Ranier	--	04 - 07
Cadillac		
Escalade	Including hybrid	02 - 14
Escalade ESV	--	03 - 14
Escalade EXT	--	02 - 10
Chevrolet / GMC		
Acadia	--	07 - 15
Avalanche	--	02 - 14
Blazer	--	99 - 01
Colorado / Canyon	--	04 - 12
Envoy	--	02 - 09
Express / Savana	--	2009
Jimmy	--	99 - 01
Silverado / Sierra	Including hybrid	99 - 15
Suburban	Including hybrid	00 - 14
Tahoe	Including hybrid	00 - 15
Trailblazer	--	02 - 09
Traverse	--	09 - 15
Yukon	Including hybrid	00 - 15
Yukon XL	--	00 - 14
Chrysler		
Aspen	Starting late built 2007 models	07 - 09
Dodge		
Durango	Excluding part# 55384	12 - 15
	Starting late built 2007 models	07 - 11
Ram 1500	--	09 - 14
Ram 2500 / 3500	--	10 - 14
Ford		
Econoline Van	--	97 - 10
Excursion	--	00 - 05
Expedition	--	97 - 15
Explorer	--	00 - 15
Explorer Sport Trac	--	07 - 10
F-150	--	97 - 14
F-250LD	--	97 - 99
F-250 Super Duty	--	98 - 14
F-350 / F-450 / F-550 Super Duty	--	99 - 14
Flex	--	09 - 15
Ranger	--	00 - 11

Make / Model	Style	Years
Hummer		
H2	--	03 - 09
H3	--	06 - 10
H3T	--	09 - 10
Infiniti		
QX56	--	04 - 13
Isuzu		
Ascender	--	03 - 08
Jeep		
Grand Cherokee	Excluding part# 55384	11 - 14
Liberty	--	09 - 12
Kia		
Borrego	--	09 - 11
Lexus		
GX460	--	10 - 11
Lincoln		
Aviator	--	03 - 05
Mark LT	--	06 - 08
MKT	--	10 - 12
Navigator	--	98 - 11
Mercury		
Mountaineer	--	00 - 10
Nissan		
Armada	--	04 - 14
Titan	--	04 - 14
Oldsmobile		
Bravada	--	99 - 04
RAM		
1500	--	11 - 14
2500 / 3500	--	11 - 14
Saab		
9-7X	--	05 - 09
Saturn		
Outlook	--	07 - 10
Toyota		
4Runner	--	10 - 11
Tacoma	--	09 - 12
Tundra	--	10 - 14

ELECTRICAL ADAPTERS

ACCESSORY SOCKET

- Powers accessories with the vehicle's 2-, 4- or 5-way flat trailer connector
- Provides a cigarette lighter socket

Bulk#	Pkg#	From Vehicle	To Trailer	Material
58312	58313	2-way flat	Accessory socket power adapter	Plastic
		4-way flat		
		5-way flat		

58312



58313

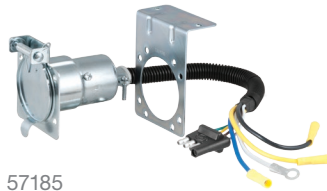
ELECTRICAL ADAPTERS

4-WAY FLAT

- Single-output adapters adapt an existing 4-way flat to 6-way round or 7-way RV blade
- Dual-output adapters add a 6-way round or 7-way RV blade to an existing 4-way flat
- Attractive, full-color retail packaging



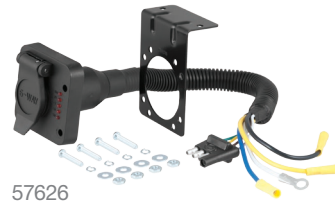
57183



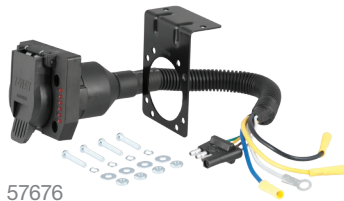
57185



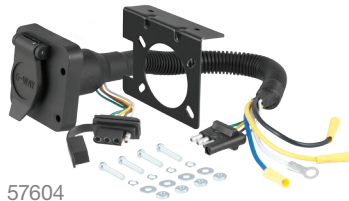
57184



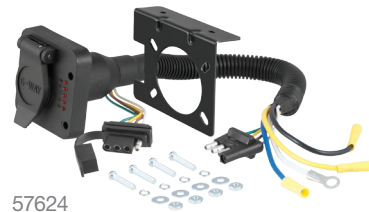
57626



57676



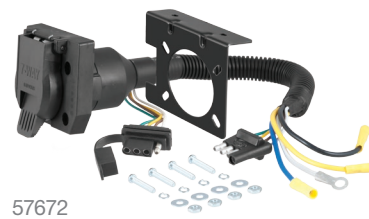
57604



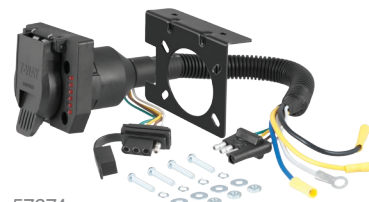
57624

Pkg#	From Vehicle	To Trailer	Notes	Material
Single Output				
57184	4-way flat	7-way RV blade	See mounting brackets on page 202 and page 203	Plastic
57183	4-way flat	6-way round	See mounting brackets on page 202 and page 203	Die-cast
57185	4-way flat	7-way RV blade	Includes mounting bracket	Steel
57626*	4-way flat	6-way round	Integrated test lamps display proper connections	Plastic
57676*	4-way flat	7-way RV blade	Integrated test lamps display proper connections	Plastic
Dual Output				
57604*	4-way flat	4-way flat	--	Plastic
		6-way round		
57624*	4-way flat	4-way flat	Integrated test lamps display proper connections	Plastic
		6-way round		
57672*	4-way flat	4-way flat	--	Plastic
		7-way RV blade		
57674*	4-way flat	4-way flat	Integrated test lamps display proper connections	Plastic
		7-way RV blade		
57102*	4-way flat	4-way flat	Audible back-up alarm when vehicle is in reverse	Plastic
		7-way RV blade		

* Includes mounting bracket and hardware



57672



57674



57102

ELECTRICAL ADAPTERS

4-WAY ROUND

- Converts 4-way round vehicle end into a 4-way flat
- Attractive, full-color retail packaging



58414



57444



57224



57225

Bulk#	Pkg#	From Vehicle	To Trailer	Material
58414	--	4-way round	4-way flat	Plastic
57224	57225	4-way round	4-way flat	Plastic
57444	--	4-way round	4-way flat	Die-cast

ELECTRICAL ADAPTERS

6-WAY ROUND

- Converts a 6-way round vehicle end to a 7-way RV blade or 4-way flat
- Attractive, full-color retail packaging

Bulk#	Pkg#	From Vehicle	To Trailer	Material
57620	57621	6-way	4-way flat	Plastic
--	57667	6-way	7-way RV blade	Die-cast and plastic



57620



57621



57667

ELECTRICAL ADAPTERS

6- OR 7-WAY WITH LED DUST COVERS

- Adapts 6-way round or 7-way RV blade sockets to 4-way flat or 6-way round
- LED dust cover prevents rust and corrosion
- Attractive, full-color retail packaging



57627



57255



57265



57265 showing LED cover



57245



57245 packaged

Pkg#	From Vehicle	To Trailer	Center Pin Function
57245	7-way RV blade	4-way flat	--
57627	6-way round	4-way flat	--
57255	7-way RV blade	6-way round	Auxiliary power
57265	7-way RV blade	6-way round	Brake lights

ELECTRICAL ADAPTERS

7-WAY RV BLADE FOR LED TRAILER LIGHTS

- Adapts 7-way socket to 4- or 5-way flat, 6-way round or 7-way RV blade that recognizes LED trailer lights
- Built-in integrated resistors
- No splicing required
- Attractive, full-color retail packaging

Pkg#	From Vehicle	To Trailer	Material
57003	7-way RV blade	7-way RV blade	Plastic
57004	7-way RV blade	4-way flat	Plastic
		5-way flat	
57005	7-way RV blade	6-way round	Plastic



57003



57004



57005

ELECTRICAL ADAPTERS

7-WAY ROUND AND RV BLADE WITH BACK-UP ALARM OPTION

- Converts a 7-way vehicle-end socket to a 4- or 5-way flat or 6-way round
- Audible alarm when vehicle is in reverse
- Attractive, full-color retail packaging



57041



57240



57250



57260



57660



57661



57724



57725



57720



57726



57727

Bulk#	Pkg#	From Vehicle	To Trailer	Center Pin Function
7-Way Round & RV Blade				
57040	57041	7-way round	4-way flat	--
57240	57241	7-way RV blade	4-way flat	--
57250	57251	7-way RV blade	5-way flat	--
57260	57261	7-way RV blade	6-way round	Auxiliary power
57660	57661	7-way RV blade	6-way round	Brake lights
7-Way RV Blade with Back-Up Alarm				
--	57724	7-way RV blade	4-way flat	--
--	57725	7-way RV blade	5-way flat	--
--	57720	7-way RV blade	6-way round	Brake lights
--	57726	7-way RV blade	6-way round	Auxiliary power
--	57727	7-way RV blade	7-way RV blade (extender)	--

- See page number column for detailed product listings and photos of each part number
- Attractive, full-color retail packaging

Bulk#	Pkg#	From Vehicle	To Trailer	Notes	Material	Page#
Dodge Factory Harness						
--	57300	7-way RV blade	4-way flat	Adapts Dodge applications to fit USCAR plugs	Plastic	page 196
Accessory Socket						
58312	58313	2-way flat	Power adapter	--	Plastic	page 198
		4-way flat				
		5-way flat				
4-Way Round						
58414	--	4-way round	4-way flat	--	Plastic	page 199
57224	57225	4-way round	4-way flat	--	Plastic	
57444	--	4-way round	4-way flat	--	Die-cast	
4-Way Flat Single Output						
--	57183	4-way flat	6-way round	See mounting brackets on page 203	Die-cast	page 198
--	57184	4-way flat	7-way RV blade	See mounting brackets on page 203	Plastic	
--	57185	4-way flat	7-way RV blade	Includes mounting bracket	Steel	
--	57626*	4-way flat	6-way round	Integrated test lamps display proper connections	Plastic	
--	57676*	4-way flat	7-way RV blade	Integrated test lamps display proper connections	Plastic	
4-Way Flat Dual Output						
--	57604*	4-way flat	4-way flat	--	Plastic	page 198
			6-way round			
--	57624*	4-way flat	4-way flat	Integrated test lamps display proper connections	Plastic	
			6-way round			
--	57672*	4-way flat	4-way flat	--	Plastic	
			7-way RV blade			
--	57674*	4-way flat	4-way flat	Integrated test lamps display proper connections	Plastic	
			7-way RV blade			
6-Way Round						
57620	57621	6-way round	4-way flat	--	Plastic	page 199
--	57667	6-way round	7-way RV blade	--	Die-cast and plastic	
6-Way or 7-Way with LED Dust Covers						
--	57245	7-way RV blade	4-way flat	--	Plastic	page 199
--	57627	6-way round	4-way flat	--	Plastic	
--	57255	7-way RV blade	6-way round	Auxiliary power in center pin	Plastic	
--	57265	7-way RV blade	6-way round	Brake lights in center pin	Plastic	
7-Way RV Blade for LED Trailer Lights						
--	57003	7-way RV blade	7-way RV blade	No splicing required	Plastic	page 200
--	57004	7-way RV blade	4-way flat	No splicing required	Plastic	
			5-way flat			
--	57005	7-way RV blade	6-way round	No splicing required	Plastic	
7-Way Round and RV Blade						
57040	57041	7-way round	4-way flat	--	Plastic	page 200
57240	57241	7-way RV blade	4-way flat	--	Plastic	
57250	57251	7-way RV blade	5-way flat	--	Plastic	
57260	57261	7-way RV blade	6-way round	Auxiliary power in center pin	Plastic	
57660	57661	7-way RV blade	6-way round	Brake lights in center pin	Plastic	
7-Way RV Blade with Back-up Alarm						
--	57724	7-way RV blade	4-way flat	--	Plastic	page 200
--	57725	7-way RV blade	5-way flat	--	Plastic	
--	57720	7-way RV blade	6-way round	Brake lights in center pin	Plastic	
--	57726	7-way RV blade	6-way round	Auxiliary power in center pin	Plastic	
--	57727	7-way RV blade	7-way RV blade	Extender	Plastic	
* Includes mounting bracket and hardware						

* Includes mounting bracket and hardware

ELECTRICAL TESTERS

CONNECTOR TESTERS

- Confirms the vehicle and trailer are properly wired
- Attractive, full-color retail packaging

Bulk#	Pkg#	Description	Material
58260	58261	LED 4-way flat	Plastic
57505	--	LED 5-way flat	Plastic
58650	--	LED 6-way round	Plastic
58270	58271	LED 7-way RV blade	Plastic



58260

58261

57505

58650

58270

58271

ELECTRICAL TESTERS

BRAKE CONTROL TESTERS

- Tests vehicle wiring for battery voltage, brake voltage, signal circuits (51498)
- Tests brake control units for function, short circuits and trailer disconnect (51499)

Bulk#	Tests	Fits
51498 NEW	Vehicle-side wiring functions	7-way RV blade
51499 NEW	Brake control unit	Brake control quick plugs



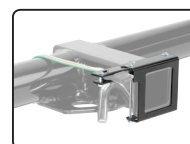
51498

51499

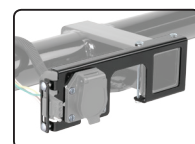
PLUGS & SOCKETS

EASY-MOUNT ELECTRICAL BRACKETS

- Simple solution for mounting wiring to a hitch
- Easy to install with no drilling or clamps required
- Notched design allows access to pin & clip
- Mounts to receiver tube with two provided bolts
- Steel body will not bend or crack
- Bulk retail box contains 10 poly-bagged units
- Durable powder coat finish
- Attractive, full-color retail packaging



4- or 5-way flat



4- or 5-way flat and
6- or 7-way sockets



58002

58001

58000

58003

Pkg#	Bulk Retail 10-Pack#	Receiver Tube Opening	Fits
58002	58002010	1 1/4" x 1 1/4"	4- or 5-way flat sockets
58001	58001010	2" x 2"	4- or 5-way flat sockets
58000	58000010	2" x 2"	4- or 5-way flat and 6- or 7-way sockets
58003	--	2 1/2" x 2 1/2"	4- or 5-way flat and 6- or 7-way sockets



58001010
10-pack

PLUGS & SOCKETS

ELECTRICAL SOCKET MOUNTING BRACKETS

- Securely mounts vehicle-end wiring to the vehicle or trailer hitch
- Steel body will not bend or crack
- Attractive, full-color retail packaging



Bulk#	Bulk 12-pack#	Pkg#	Fits	Description	Finish
For 4-Way Flat, 5-Way Flat and 6-way Round Connectors					
58300	--	58301	4-way flat	--	Gloss black
--	57207	57208	4-, 5- or 6-way round sockets	--	Gloss black
58210	--	--	4- or 6-way round sockets	--	Zinc-plated
For 7-Way Round and 7-Way RV Blade Connectors					
58222	--	--	7-way round sockets	--	Zinc-plated
--	57205	57206	7-way RV blade sockets	Increased strength, slotted screw holes	Gloss black
58230	--	58231	7-way RV blade sockets	--	Zinc-plated
58290	--	58291	7-way RV blade sockets	--	Gloss black
58510	--	--	7-way RV blade sockets	Increased strength	Gloss black
58520	--	--	7-way USCAR factory Ford, GM and Nissan sockets	--	Gloss black
For Mounting Connector Brackets to Trailer Hitches					
--	57203	57204	4- or 5-way flat and 6-way round brackets	Short, universal clamp-on mount	Gloss black
--	57201	57202	7-way round or RV blade sockets	Long, universal clamp-on mount	Gloss black

PLUGS & SOCKETS

7-WAY RV BLADE FACTORY REPLACEMENTS

- Replacements for USCAR factory connectors
- Attractive, full-color retail packaging

Pkg#	Description	Material
55415	USCAR replacement socket for 7-way systems on Ford, GM and Nissan vehicles	Plastic
56415	USCAR replacement socket for 7-way twist-in factory-equipped vehicles	Plastic



55415



56415

PLUGS & SOCKETS

ELECTRICAL ADAPTERS

DUAL OUTPUT SOCKETS WITH BACK-UP ALARM

- Audible alarm when vehicle is in reverse
- Includes bracket, hardware and connector covers
- Attractive, full-color retail packaging



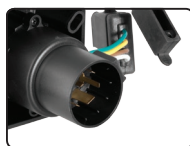
57100



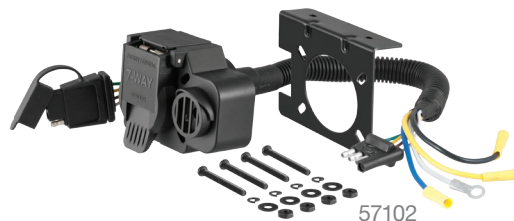
57100 8-prong plug



57101



Plugs into USCAR



57102

Pkg#	Make	Plugs Into	Output
Plugs & Sockets			
57100	Dodge, Chrysler, Jeep	Factory rectangular 8-prong	7-way RV blade and 4-way flat
57101	See USCAR replacement products on page 196	USCAR socket	7-way RV blade and 4-way flat
Adapter			
57102	Universal adapter	4-way flat, manual wiring needed	7-way RV blade and 4-way flat

PLUGS & SOCKETS

2-WAY FLAT

- Bonded wires and rubber-molded construction
- Attractive, full-color retail packaging

Bulk#	Pkg#	Location	Wire Length	Description
58020	58021	Vehicle	12"	Socket with bonded loop
		Trailer		Plug with bonded loop



58020



58021

PLUGS & SOCKETS

4-WAY FLAT

- Bonded wires and rubber-molded construction
- For use on vehicles with two-wire systems
- Attractive, full-color retail packaging



Bulk#	Pkg#	Pkg Kit#	Location	Wire Length	Description
58030	58031	58033*	Trailer	12"	Plug with bonded wire
--	58348	58349*	Trailer	48"	Plug with bonded wire
58040	58041	58044*	Vehicle	60"	Socket with bonded wire
--	58304	58344*	Vehicle	12"	Socket with bonded wire
--	--	--	Trailer	12"	Plug with bonded wire
--	58355	58305*	Vehicle	48"	Socket with bonded wire
--	--	--	Trailer	12"	Plug with bonded wire
58050	58051	--	Vehicle	72"	Socket with bonded loop
--	--	--	Trailer	72"	Plug with bonded loop
58380	58381	--	Vehicle	12"	Socket with bonded loop
--	--	--	Trailer	12"	Plug with bonded loop
--	57220	--	Trailer	240"	Plug with bonded wire

* Includes four snap locks



PLUGS & SOCKETS

4-WAY FLAT LICENSE PLATE LIGHT PLUG

- For use in a typical license plate light hole
- Fits 1 1/4" holes
- Attractive, full-color retail packaging



Bulk#	Pkg#	Location	Wire Length	Description
58404	57404	Vehicle	--	Adapter, dust cap included
--	--	Trailer	--	--
58405	57405	Vehicle	36"	Socket with bonded wire, dust cap included
58406	57406	Vehicle	60"	Socket with bonded wire, dust cap included

PLUGS & SOCKETS

4-WAY ROUND

- Concealed terminals and spring-loaded steel cover on vehicle end
- Dust- and water-resistant
- Attractive, full-color retail packaging



Bulk#	Pkg#	Pkg Kit#	Location	Material	Description
58060	58061	--	Trailer	Die-cast	Round plug
58070	58071	--	Vehicle	Die-cast	Round socket
--	58671	58677*	Trailer	Die-cast	Round plug (58060)
--	58671	58677*	Vehicle	Die-cast	Round socket (58070)

* Includes mounting bracket, wiring and hardware

PLUGS & SOCKETS

4- & 5-WAY FLAT DUST COVERS

- Helps prevent rust and corrosion
- Rubber-molded construction
- Attractive, full-color retail packaging



Bulk#	Pkg#	Location	Material	Description
58200	58201	Vehicle	Rubber	4-way flat dust cap
58750	--	Trailer	Rubber	4-way flat dust cap
--	58761	Vehicle	Rubber	4-way flat cap set
--	58761	Trailer	Rubber	4-way flat cap set
58202	58203	Vehicle	Rubber	5-way flat dust cap



PLUGS & SOCKETS

5-WAY FLAT

- Ideal for trailers with surge brakes, commonly found on boat trailers
- Attractive, full-color retail packaging

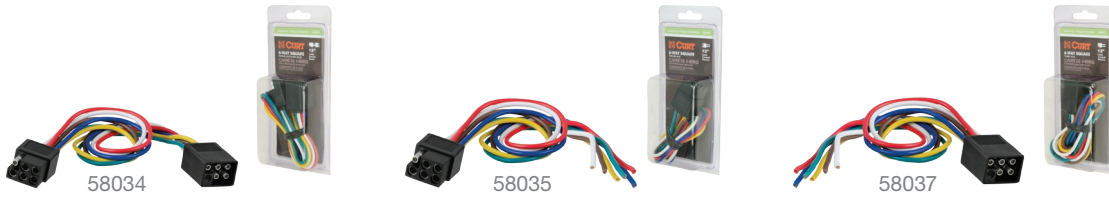


Bulk#	Pkg#	Location	Wire Length	Description
58530	58531	Vehicle	60"	Socket with wire
58540	58541	Trailer	48"	Plug with wire
58550	58551	Vehicle	72"	Socket with loop
58550	58551	Trailer	72"	Plug with loop

PLUGS & SOCKETS

6-WAY SQUARE

- Rubber-molded construction
- Commonly found on pop-up campers
- Attractive, full-color retail packaging



Pkg#	Location	Wire Length	Description
58034	Vehicle	12"	Square socket with loop
	Trailer		Square plug with loop
58035	Vehicle	12"	Square socket with wire
58037	Trailer	12"	Square plug with wire

PLUGS & SOCKETS

6-WAY ROUND

- Concealed terminals provide protection from corrosion
- Dust covers provide resistance to the elements
- Attractive, full-color retail packaging



Bulk#	Pkg#	Pkg Kit#	Location	Material	Description
58080	58081	--	Trailer	Die-cast	Round plug
58120	--	--	Trailer	Plastic chrome	Round plug
58082	58083	--	Trailer	Die-cast	Round plug with spring
58090	58091	--	Vehicle	Die-cast	Round socket
58130	--	--	Vehicle	Plastic	Round socket
--	58092	58093*	Trailer	Die-cast	Round plug (58080)
			Vehicle	Die-cast	Round socket (58090)

* Includes electrical connectors, mounting bracket and hardware

PLUGS & SOCKETS

7-WAY ROUND CONNECTORS

- Durable die-cast housing
- Commonly used on semi and utility trailers
- Attractive, full-color retail packaging



58170



58160



58161



58180



58181

Bulk#	Pkg#	Location	Material	Description
58170	--	Vehicle	Die-cast	Round socket
58160	58161	Trailer	Die-cast	Round plug
58180	58181	Trailer	Die-cast	Round plug with spring

PLUGS & SOCKETS

7-WAY RV BLADE CONNECTORS

- Used on RV travel trailers
- Concealed terminals provide protection from corrosion
- Attractive, full-color retail packaging



58140



58141



58150



58151



58190



58220



58417



58152



Bulk#	Pkg#	Pkg Kit#	Location	Material	Description
58140	58141	--	Trailer	Plastic	RV blade plug
58150	58151	--	Vehicle	Plastic	RV blade socket
58190	--	--	Trailer	Die-cast	RV blade plug
58220	--	--	Vehicle	Steel	RV blade socket
--	58417	--	Vehicle	Plastic	RV blade socket with mounting bracket
--	--	58152*	Trailer	Plastic	RV blade plug
--	--		Vehicle	Plastic	RV blade socket

* Includes electrical connectors, mounting bracket and hardware

COMBINATION LIGHTS & REPLACEMENT LENSES

- Exceeds DOT requirements for stop, tail, turn, rear and side reflectors, side markers and license plate illumination
- Two extra connections provide hookups for other lights
- Molded housing and lenses with phosphor-bronze contacts



Pkg#	Vehicle Side	Lens Color	License Plate Illumination
53440	Passenger	Red	No
53441	Driver	Red	Yes
53445	Rear replacement lens		
53515	Side replacement lens		

SUBMERSIBLE COMBINATION LIGHTS

- Exceeds DOT requirements for stop, turn, rear and side reflectors, clearance and license plate illumination
- Legal for trailers over 80" wide



Pkg#	Vehicle Side	Lens Color	License Plate Illumination
53452	Passenger	Red	No
53453	Driver	Red	Yes

TRAILER LIGHT KIT

- Easily connects to any standard automobile lighting system
- Exceeds DOT highway standards
- Ideal for trailers up to 80" wide



Pkg#	Length	Plug	Includes
53540	20'	4-way flat	Two combination lights, two marker lights, license plate bracket and frame mounting clips

TOWING LIGHTS

- Non-scratch magnetic base
- Patent# D355,270



Bulk#	Pkg#	Length	Plug	Description
53200	53204*	20'	4-way flat	Auxiliary towing lights

* Includes a sturdy, reusable case

BREAKAWAY KITS

- For trailers with one to three axles and electric brakes
- Meets DOT requirements for holding / breakaway situations
- LED lights indicate a good charge, battery is charging or low battery (52042, 52044)
- Required in most states (52026, 52028)
- Easily installs with one bolt to jack post or A-frame; eliminates cutting and drilling (52026, 52028)
- Attractive, full-color retail packaging



52044



52042



52040



52028

Pkg#	Loads From	Includes	Replacement Part#
Push-to-Test Breakaway Kits			
52044	Top	Push-to-test battery case	--
		12-volt 5-amp rechargeable battery	--
		Built-in battery charger	--
		Breakaway switch	--
		Mounting hardware	--
52042	Side	Includes the same parts as 52044	--
Soft-Trac 1 Breakaway Kits			
52040	Side	Lockable battery case	52027
		12-volt 5 amp rechargeable battery	52023
		Nylon breakaway switch	52010
		Battery charger	52025
		Mounting hardware	--
52041	Side	Includes the same parts as 52040 Battery charger not included	--
Soft-Trac 2 Breakaway Kits			
52028	Top	Battery case with mounting bracket	52029
		12-volt 5-amp rechargeable battery	52023
		Nylon breakaway switch	52010
		Battery charger	52025
52026	Top	Includes the same parts as 52028 Battery charger not included	--



52042 push-to-test



52044 push-to-test

REPLACEMENT BATTERY CASES

- Protects battery and charger from the elements and corrosion



52022



52090



52029



52027



52030

Bulk#	Width	Height	Depth	Description	Loads From	Includes
52029	5"	3 1/4"	3 7/8"	3 1/8" inside bracket depth	Top	Weldable metal bracket for easy mounting on A-frame or jack posts
52030	5"	3 1/4"	3 7/8"	--	Side	--
52027	5"	3 3/8"	3 3/4"	Watertight case with rubber gaskets and screw-tight lid	Top	Four-screw lid
52022	6"	5 1/2"	3 1/4"	--	Top	Lockable tab and a bolt-on mount
52090	5 7/8"	5 3/8"	3 1/2"	--	Top	Metal bracket and locking bar for security

BREAKAWAY KIT REPLACEMENT PARTS

- For use with trailer breakaway systems
- Connects vehicle to trailer breakaway battery (52010)
- High-temp nylon pull-pin included (52020)



52023



52025



52010



52011



52020

Bulk#	Pkg#	Width	Height	Depth	Description	Includes
52010	52011	--	--	--	Breakaway switch	Nylon case with weldable high-temp, metal tab and silver contact points
52020	--	--	--	--	48" lanyard	--
52023	--	3 1/2"	4"	2 3/4"	Sealed lead acid battery for 1-3 axle trailers (12-volt, 5 amps per hour)	--
52025	--	--	--	--	12-volt battery charger	--

SNAP LOCKS & WIRE NUT

- Eliminates the need to strip and solder wires
- Snap locks are easy to use; just insert the wires and squeeze together with pliers



58280



59906



59956

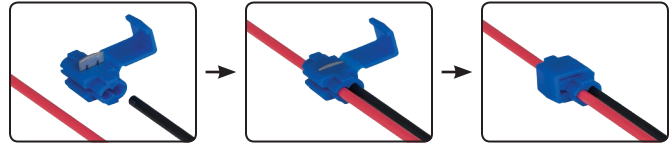


59905



59901

Bulk#	Gauges	Description	Quantity
58280	18-14	Tap connector	100
59906	18-14	Double-run tap connector	100
59956	18-14	Tap connector with gel sealant	100
59905	12-10	Tap connector	100
59901	18-10	Wire nut	100



RING & SPADE TERMINALS

- Vinyl-insulated



59521



59522



59525



59523



59531



59534



59556



59538



59611



59621



59631

Bulk#	Gauge	Stud Size	Color	Quantity
Ring Terminals				
59521	16-14	#10	Blue	100
59522	16-14	1/4"	Blue	100
59525	16-14	5/16"	Blue	100
59523	16-14	3/8"	Blue	100
59531	12-10	#10	Yellow	100
59534	12-10	1/4"	Yellow	100
59556	12-10	5/16"	Yellow	100
59538	12-10	3/8"	Yellow	100
Spade Terminals				
59611	22-18	#10	Red	100
59621	16-14	#10	Blue	100
59631	12-10	#10	Yellow	100

BUTT & QUICK CONNECTORS

- Quick links provide a firm connection with the ability to disconnect later
- Butt connectors require no taping
- Vinyl-insulated



59421



59422



59423



59592



59432



59593



59433

Bulk#	End	Gauge	Color	Quantity
Butt Connectors				
59421	--	22-18	Red	100
59422	--	16-14	Blue	100
59423	--	12-10	Yellow	100
Quick Connectors				
59592	Female	16-14	Blue	100
59432	Male	16-14	Blue	100
59593	Female	12-10	Yellow	100
59433	Male	12-10	Yellow	100

HEAVY-DUTY FLASHERS, CIRCUIT BREAKERS & FUSES

- Recommended for applications where over-current protection is required
- Turn signal flashers are 12-volt, two-terminal flashers



Bulk#	Amps	Description	Qty
Fuses and Accessories			
58440	10 amps	ATC fuse	100
58450	15 amps	ATC fuse	100
58460	20 amps	ATC fuse	100
58470	10 amps	In-line fuse holder	12
Relays			
58480	35 amps	Relay, SPNO, 4-terminal, 12-volt DC	12
57000	--	Nissan '04 to present Armada and Titan without factory tow package	1



Bulk#	Amps	Description	Qty
Flashers			
58310	14 amps	Flasher 1-4 lamps or 2-8 hazard	1
58320	14 amps	Flasher 2-3 lamps or 2-6 hazard	1
Circuit Breaker			
58340	15 amps	Universal circuit breaker	1
58350	20 amps	Universal circuit breaker	1
58360	30 amps	Universal circuit breaker	1
58370	40 amps	Universal circuit breaker	1

SLIT LOOM & CLAMP

- Protect loose wires from vibration and damage



Bulk#	Pkg#	Description	Amount
58823	--	1/4" convoluted slit loom	Per foot
59824	59825	3/8" convoluted slit loom	Per foot / 25'
59826	59827	1/2" convoluted slit loom	Per foot / 25'
--	59828	3/8" ID nylon loom clamp	25 per bag

NYLON WIRE TIES & ELECTRICAL TAPE

- Ideal for securing wires



Bulk#	Length	Quantity	Specifications	Description
59728	7 1/4"	100	--	Nylon ties
59732	14 1/4"	100	--	Nylon ties
59740	60'	10-pack	7 mil x 3/4"	Electrical tape