



# Bring It<sup>®</sup>



## 5TH WHEEL HITCHES

Scan for live  
digital version



CURT 5th wheel hitches are built with a bigger lifestyle in mind. For all RV enthusiasts, from the casual to the extreme, CURT offers 5th wheel products to help your customers Bring It!<sup>®</sup>

Available in 16K, 20K and 24K capacities, CURT Q-series 5th wheel hitches are the quietest on the market, featuring dual-locking jaws, rubber inserts to dampen sound and a spherical bearing that allows the hitch head to move in any direction. The most recent addition to the CURT Q-series, the Q16, is easier to couple, quieter to tow and smoother on the road.

Complementing our 5th wheels are CURT 5th wheel rollers. The R16, R20 and R24 rollers are true rolling units, not just sliders. They offer up to 12" of movement and are easy to install.

Some of our other 5th wheel products include original equipment-compatible 5th wheel legs, gooseneck / 5th wheel adapter plates and the heavy-duty electrical components necessary for towing larger trailers. For all things relating to 5th wheel towing, you can count on CURT.

### Why CURT 5th wheel hitches



Factory-style leg and 5th wheel head kits



Top quality Q-series 5th wheel hitch line



R-series rollers with movement up to 12"



**24k**  
GTW

## FORD & RAM OEM-COMPATIBLE 5TH WHEEL LEGS

- Converts any CURT 5th wheel hitch head to fit Ford or RAM OEM under-bed hitch platform
- Quarter-turn anchoring system for quick installation and removal
- Anchors can be adjusted to eliminate chocking between the legs and under-bed rails
- Durable carbide powder coat finish
- **Limited lifetime warranty**



16017



16021

Pkg#	Make	GTW	Finish
16017	Ford	Up to 24,000 lbs.	Carbide
16021	RAM	Up to 24,000 lbs.	Carbide

**16k**  
GTW

## E16 5TH WHEEL HITCH

- Up to 16,000 lbs. GTW / 4,000 lbs. vertical load  
Never exceed vehicle's maximum gross weight rating
- Single-handle operation
- Auto-locking mechanism
- Dual-pivot head with anti-rattle skid plate
- Four-position height adjustment
- 10° lateral head movement
- Mounts to industry-standard rails
- Meets proposed SAE J2638 testing standards
- Durable carbide powder coat finish
- **Five-year limited warranty**



16115



16902

**Installation kits  
available on page 235**



See page 231  
for full roller line

16515



16516



16616

Pkg#	Description	GTW / Vertical Load	Height	Finish
<b>5th Wheel Hitches, Kits and Replacement Parts</b>				
16115	E16 5th wheel	16,000 / 4,000 lbs.	13" - 17"	Carbide
16116	E16 5th wheel with base rails (16200)	16,000 / 4,000 lbs.	13" - 17"	Carbide
16515	E16 5th wheel head unit (for use with the 16560 R16 roller)	16,000 / 4,000 lbs.	--	Carbide
16516	E16 5th wheel (16515) with R16 roller (16560)	16,000 / 4,000 lbs.	14" - 17"	Carbide
16616	E16 5th wheel (16515) with R16 roller (16560) and base rails (16200)	16,000 / 4,000 lbs.	14" - 17"	Carbide
16903	E16 replacement leg kit	--	--	Carbide
16902	Replacement rail pins & clips	--	--	Yellow zinc
<b>OEM-Compatible 5th Wheel Hitch Kits</b>				
16031 <b>NEW</b>	E16 5th wheel head unit (16515) with Ford OEM legs (16017)	16,000 / 4,000 lbs.	13" - 17"	Carbide
16041 <b>NEW</b>	E16 5th wheel head unit (16515) with RAM OEM legs (16021)	16,000 / 4,000 lbs.	14" - 18"	Carbide

For replacement parts visit [curtmfg.com](http://curtmfg.com)



16K

GTW

# Q16 5TH WHEEL HITCH

- Up to 16,000 lbs. GTW / 4,000 lbs. vertical load  
Never exceed vehicle's maximum gross weight rating
- High-strength interlocking cast jaws fully wrap the kingpin to eliminate noise
- Fully articulating torsion head for controlled coupling and a stable, quiet ride
- Extra wide head opening for easier coupling
- Three-position coupling indicator is clearly visible from the vehicle cab
- Lockable handle self-resets to the couple position when hitch is uncoupled
- Cast yoke, with poly-torsion inserts, suppresses shock loads and reduces noise
- Compatible with kingpin extension boxes, including common pivoting pin boxes
- Fast, one-pin head removal makes moving hitch to another vehicle easy
- Mounts to industry-standard rails
- Includes polyethylene lube plate
- Meets proposed SAE J2638 testing standards
- Durable carbide powder coat finish
- Patent# 8,827,298 - applies to 16120 and 16520
- **Limited lifetime warranty**



**Installation kits  
available on page 235**

## Three-position coupling indicator



Back of  
Q16 head

**UNCUPLE**

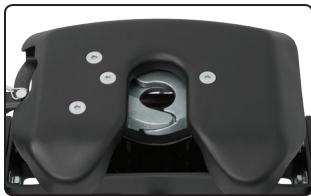
Jaws locked open. Indicates it is safe to pull the truck away from the trailer. Do not couple!

**COUPLE**

Jaws ready to couple. Indicates it is safe to back the truck in for coupling to your trailer.

**TOW**

Jaws locked closed. Indicates it is safe to tow the trailer. Visibly inspect to ensure proper coupling.



Extra wide head opening for easy coupling and high-strength interlocking jaws to eliminate noise



Fully articulating torsion head for controlled coupling and a stable, quiet ride



Lockable handle self-resets to the couple position when the hitch is uncoupled



Cast yoke, with poly-torsion inserts, suppresses shock loads and reduces noise



See page 231  
for full roller line

16520



16521



16621

Pkg#	Description	GTW / Vertical Load	Height	Finish
<b>5th Wheel Hitches, Kits and Replacement Parts</b>				
16120	Q16 5th wheel	16,000 / 4,000 lbs.	13" - 17"	Carbide
16121	Q16 5th wheel with base rails (16200)	16,000 / 4,000 lbs.	13" - 17"	Carbide
16520	Q16 5th wheel head unit (for use with the 16560 R16 roller)	16,000 / 4,000 lbs.	--	Carbide
16521	Q16 5th wheel (16520) with R16 roller (16560)	16,000 / 4,000 lbs.	17 1/2" - 21 1/2"	Carbide
16621	Q16 5th wheel (16520) with R16 roller (16560) and base rails (16200)	16,000 / 4,000 lbs.	17 1/2" - 21 1/2"	Carbide
16920	Q16 replacement leg kit and hardware	--	--	Carbide
16902	Replacement rail pins & clips	--	--	Yellow zinc
<b>OEM-Compatible 5th Wheel Hitch Kits</b>				
16033 <b>NEW</b>	Q16 5th wheel head unit (16520) with Ford OEM legs (16017)	16,000 / 4,000 lbs.	13" - 17"	Carbide
16043 <b>NEW</b>	Q16 5th wheel head unit (16520) with RAM OEM legs (16021)	16,000 / 4,000 lbs.	14" - 18"	Carbide

For replacement parts visit [curtmfg.com](http://curtmfg.com)

**20K**  
GTW

## Q20 5TH WHEEL HITCH

- Up to 20,000 lbs. GTW / 5,000 lbs. vertical load  
Never exceed vehicle's maximum gross weight rating
- Spherical axial bearing ensures smooth, quiet towing and allows for unimpeded head movement
- Dual jaws provide 360° kingpin contact
- Coupling indicators visible from vehicle cab
- Self-aligning head with wide opening for easy coupling
- Lockable, short-throw, single-handle operation
- Mounts to industry-standard rails
- Three grease fittings for easy lubrication
- Includes polyethylene lube plate
- Meets proposed SAE J2638 testing standards
- Durable carbide powder coat finish
- **Ten-year limited warranty**



**Installation kits  
available on page 235**



See page 231  
for full roller line



16536



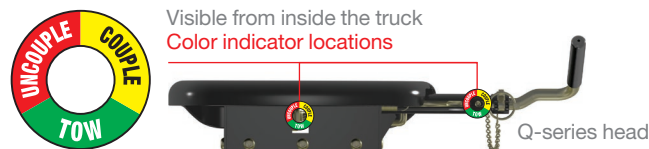
16636

Pkg#	Description	GTW / Vertical Load	Height	Finish
<b>5th Wheel Hitches, Kits and Replacement Parts</b>				
16130	Q20 5th wheel	20,000 / 5,000 lbs.	13" - 17"	Carbide
16131	Q20 5th wheel with base rails (16200)	20,000 / 5,000 lbs.	13" - 17"	Carbide
16530	Q20 5th wheel head unit (for use with the 16550 R20 roller)	20,000 / 5,000 lbs.	--	Carbide
16536	Q20 5th wheel (16530) with R20 roller (16550)	20,000 / 5,000 lbs.	17 1/2" - 21 1/2"	Carbide
16636	Q20 5th wheel (16530) with R20 roller (16550) and base rails (16200)	20,000 / 5,000 lbs.	17 1/2" - 21 1/2"	Carbide
16904	Q20 replacement leg kit and hardware	--	--	Carbide
16902	Replacement rail pins & clips	--	--	Yellow zinc

### OEM-Compatible 5th Wheel Hitch Kits

16035	<b>NEW</b> Q20 5th wheel head unit (16530) with Ford OEM legs (16017)	20,000 / 5,000 lbs.	13" - 17"	Carbide
16045	<b>NEW</b> Q20 5th wheel head unit (16530) with RAM OEM legs (16021)	20,000 / 5,000 lbs.	14" - 18"	Carbide

### Three-position coupling indicator



Visible from inside the truck  
Color indicator locations



**UNCOUPLE**

Jaws locked open. Indicates it is safe to pull the truck away from the trailer. Do not couple!



**COUPLE**

Jaws ready to couple. Indicates it is safe to back the truck in for coupling to your trailer.



**TOW**

Jaws locked closed. Indicates it is safe to tow the trailer. Visibly inspect to ensure proper coupling.

For replacement parts visit [curtmfg.com](http://curtmfg.com)

**16K**  
GTW

## E16 & Q16 5TH WHEEL WEDGE KITS

- Allows CURT E16 or Q16 to function with Sidewinder™ products
- Minimizes movement between the 5th wheel hitch and pin box
- Durable carbide powder coat finish

Bulk#	Fits	Finish
16991	<b>NEW</b> E16 5th wheel hitch	Carbide
16992	<b>NEW</b> Q16 5th wheel hitch	Carbide



16991



16992



24K

GTW

# Q24 5TH WHEEL HITCH

- Up to 24,000 lbs. GTW / 6,000 lbs. vertical load  
Never exceed vehicle's maximum gross weight rating
- Spherical axial bearing ensures smooth, quiet towing and allows for unimpeded head movement
- Dual jaws provide 360° kingpin contact
- Coupling indicators visible from vehicle cab
- Self-aligning head with wide opening for easy coupling
- Lockable, short-throw, single-handle operation
- Mounts to industry-standard rails
- Three grease fittings for easy lubrication
- Includes polyethylene lube plate
- Meets proposed SAE J2638 testing standards
- Durable carbide powder coat finish
- **Ten-year limited warranty**



16245

Installation kits  
available on page 235

16902



See page 231  
for full roller line

16545



16546



16646

Pkg#	Description	GTW / Vertical Load	Height	Finish
<b>5th Wheel Hitches, Kits and Replacement Parts</b>				
16245	Q24 5th wheel	24,000 / 6,000 lbs.	13" - 17"	Carbide
16246	Q24 5th wheel with base rails (16200)	24,000 / 6,000 lbs.	13" - 17"	Carbide
16545	Q24 5th wheel head unit (for use with the 16570 R24 roller)	24,000 / 6,000 lbs.	--	Carbide
16546	Q24 5th wheel (16545) with R24 roller (16570)	24,000 / 6,000 lbs.	17 1/2" - 21 1/2"	Carbide
16646	Q24 5th wheel (16545) with R24 roller (16570) and base rails (16200)	24,000 / 6,000 lbs.	17 1/2" - 21 1/2"	Carbide
16913	Q24 replacement leg kit and hardware	--	--	Carbide
16902	Replacement rail pins & clips	--	--	Yellow zinc

## OEM-Compatible 5th Wheel Hitch Kits

16037	<b>NEW</b> Q24 5th wheel head unit (16545) with Ford OEM legs (16017)	24,000 / 6,000 lbs.	13" - 17"	Carbide
16047	<b>NEW</b> Q24 5th wheel head unit (16545) with RAM OEM legs (16021)	24,000 / 6,000 lbs.	14" - 18"	Carbide

## Three-position coupling indicator



Visible from inside the truck  
Color indicator locations



Q-series head

**UNCOUPLE**

Jaws locked open. Indicates it is safe to pull the truck away from the trailer. Do not couple!

**COUPLE**

Jaws ready to couple. Indicates it is safe to back the truck in for coupling to your trailer.

**TOW**

Jaws locked closed. Indicates it is safe to tow the trailer. Visibly inspect to ensure proper coupling.

For replacement parts visit [curtmfg.com](http://curtmfg.com)

# 5TH WHEEL HITCH ROLLER UNITS

- Up to 24,000 lbs. GTW
- Solid, non-binding rods
- True rolling unit - not just a slider
- 12" travel - most competitive models only offer 10"
- Uses wheels to bear the weight, unlike competitive models that use hollow rods
- Mounts to industry-standard rails
- Durable carbide powder coat finish
- **Ten-year limited warranty (20K and 24K)**
- **Five-year limited warranty (16K)**



16570 R24 roller shown installed in a truck bed with 16545 Q24 head unit (16546 kit)

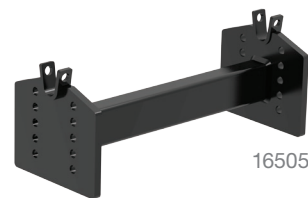
## 16K GTW R16 ROLLER



16560



16521



16505

## 20K GTW R20 ROLLER

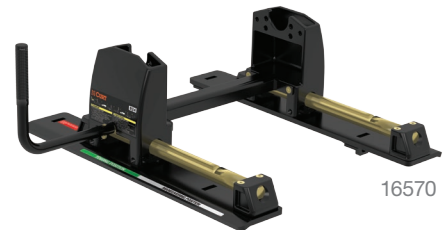


16550



16536

## 24K GTW R24 ROLLER



16570



16546



16902

Pkg#	Description	GTW / Vertical Load	Height	Finish
16560	R16 5th wheel hitch roller unit	16,000 lbs.	--	Carbide
16516	E16 5th wheel (16515) with R16 roller (16560)	16,000 / 4,000 lbs.	14" - 17"	Carbide
16521	Q16 5th wheel (16520) with R16 roller (16560)	16,000 / 4,000 lbs.	17 1/2" - 21 1/2"	Carbide
16550	R20 5th wheel hitch roller unit	20,000 lbs.	--	Carbide
16536	Q20 5th wheel (16530) with R20 roller (16550)	20,000 / 5,000 lbs.	17 1/2" - 21 1/2"	Carbide
16570	R24 5th wheel hitch roller unit	24,000 lbs.	--	Carbide
16546	Q24 5th wheel (16545) with R24 roller (16570)	24,000 / 6,000 lbs.	17 1/2" - 21 1/2"	Carbide
16505	Included in 16515, 16516 and 16616 kits Adapts 16115 or 16116 head to CURT rollers	--	--	--
16902	Replacement rail pins & clips	--	--	Yellow zinc

For replacement parts visit [curtmfg.com](http://curtmfg.com)



# OEM-COMPATIBLE 5TH WHEEL HITCH KITS

**NEW**

- Legs convert any CURT 5th wheel hitch head to Ford or RAM OEM under-bed hitch platform
- Quarter-turn anchoring system for quick installation and removal
- Anchors can be adjusted to eliminate chocking between the legs and under-bed rails
- Durable carbide powder coat finish
- **Ten-year limited warranty (20K and 24K)**
- **Five-year limited warranty (16K)**



16031



16033



16035



16037



16041



16043



16045



16047



16021 RAM legs shown installed in a truck bed with 16545 Q24 head unit (16047 kit)

Part#	Description	GTW / Vertical Load	Height	Warranty
<b>Ford Applications</b>				
16031 <b>NEW</b>	E16 5th wheel head unit (16515) with OEM legs (16017)	16,000 lbs. / 4,000 lbs.	13" - 17"	Five-year limited
16033 <b>NEW</b>	Q16 5th wheel head unit (16520) with OEM legs (16017)	16,000 lbs. / 4,000 lbs.	13" - 17"	Limited lifetime
16035 <b>NEW</b>	Q20 5th wheel head unit (16530) with OEM legs (16017)	20,000 lbs. / 5,000 lbs.	13" - 17"	Ten-year limited
16037 <b>NEW</b>	Q24 5th wheel head unit (16545) with OEM legs (16017)	24,000 lbs. / 6,000 lbs.	13" - 17"	Ten-year limited
<b>RAM Applications</b>				
16041 <b>NEW</b>	E16 5th wheel head unit (16515) with OEM legs (16021)	16,000 lbs. / 4,000 lbs.	14" - 18"	Five-year limited
16043 <b>NEW</b>	Q16 5th wheel head unit (16520) with OEM legs (16021)	16,000 lbs. / 4,000 lbs.	14" - 18"	Limited lifetime
16045 <b>NEW</b>	Q20 5th wheel head unit (16530) with OEM legs (16021)	20,000 lbs. / 5,000 lbs.	14" - 18"	Ten-year limited
16047 <b>NEW</b>	Q24 5th wheel head unit (16545) with OEM legs (16021)	24,000 lbs. / 6,000 lbs.	14" - 18"	Ten-year limited

**25K**  
GTW

## 5TH WHEEL RAIL GOOSENECK HITCHES

- Four-pin installation and removal for easy access to truck bed
- Spyder includes welded trailer ball, safety chain hookups and pins & clips
- Bent plate includes pins & clips and welded trailer ball with 3" offset from front to rear
- Mounts to all industry-standard 5th wheel rails



16902



16085



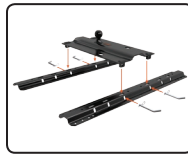
16055



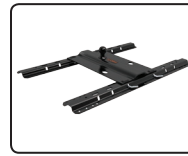
Attaches to  
5th wheel rails



Quickly allows  
gooseneck hitch



Attaches to  
5th wheel rails



Bent plate  
provides 3" offset

Pkg#	Ball Size	GTW	Finish	Description
16085	2 5/16"	25,000 lbs.	Carbide	Spyder gooseneck hitch
16055	2 5/16"	25,000 lbs.	Carbide	Bent plate gooseneck hitch with 3" offset
16902	--	--	Yellow zinc	Replacement rail pins & clips

**20K**  
GTW

## X5 GOOSENECK TO 5TH WHEEL ADAPTER PLATES

- Converts Double Lock and competitive gooseneck hitches to 5th wheel rails
- For use with CURT and other common 5th wheel hitches up to 20,000 lbs.



16210 - round shank



16220 - round shank



16310 - square shank

Bulk#	Shank Style	Fits
16210	Round shank	CURT 60607, 60615, 60620, 60625
16220	Round shank	CURT EZr 60611 and 60612
16310	Square shank	Competitive products



Replaces Double  
Lock trailer ball



Quickly allows  
5th wheel rails



Accepts 5th wheel  
hitches and rollers

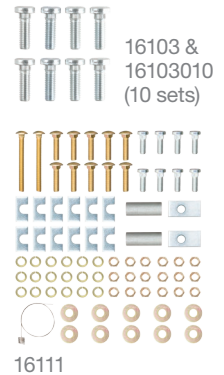


# UNIVERSAL 5TH WHEEL BASE RAILS

- Can be used with all CURT and competitive 5th wheels, rollers, bent plate goosenecks and Spyder goosenecks
- Some vehicles require semi-custom brackets, see below



Bulk#	Multi-Pack#	Finish	Description	Includes
16150 <b>NEW</b>	--	Gloss black	Two 5th wheel base rails, four-bolt	Brackets and hardware
16104	--	Gloss black	Two 5th wheel base rails	--
16204	--	Carbide	Two 5th wheel base rails	--
16100	--	Gloss black	Two 5th wheel base rails	Brackets and hardware (16101)
16200	--	Carbide	Two 5th wheel base rails	Brackets and hardware (16101)
16101	--	Zinc-plated	Installation brackets and hardware	--
16111	--	Zinc-plated	Installation hardware	--
16103	16103010	Zinc-plated	Replacement rail bolts, needed when reinstalling used rails	16103 - eight bolts 16103010 - 10 sets of eight bolts



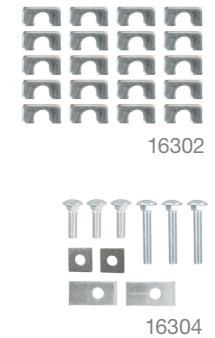
# SEMI-CUSTOM 5TH WHEEL BRACKET KITS

- Required for the vehicles listed below if not using the custom bracket kits shown on page 235
- Use in combination with 16100 / 16200 rails
- 16300 and 16305 do not require universal brackets



Make / Model	Style	Years	Bracket Kit#	Base Rails Needed		Notes
				Carbide	Black	
Dodge / RAM						
RAM 1500	Excluding air bag suspension	09 - 14	16305*	16204	16104	Drill
		02 - 08	16303	16200	16100	Drill
RAM 2500 / 3500	--	03 - 12	16301	16200	16100	Drill
Ford						
F-150	Excluding Heritage Edition	04 - 11	16300*	16204	16104	Drill
Toyota						
Tundra	6' 5" and 8' beds, excluding Crew Max	07 - 08	16304	16200	16100	Drill
	Standard cab, long box	00 - 06	16302	16200	16100	Drill
* Use with 16104 / 16204 rails, universal brackets are not required						

\* Use with 16104 / 16204 rails, universal brackets are not required

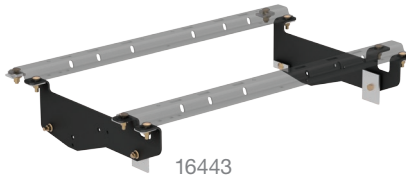


# CUSTOM 5TH WHEEL BRACKET KITS

- Reduces or eliminates drilling, cutting installation time in half
- Use in combination with 16104 / 16204 rails
- No need for universal brackets and hardware



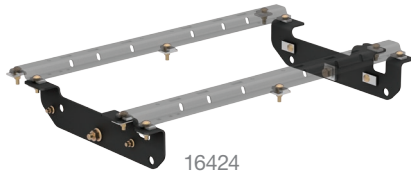
16437



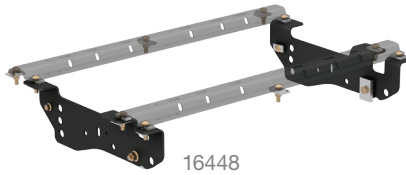
16443



16465



16424



16448



16468

Make / Model	Style	Years	Bracket Kit#	Base Rails Needed		Notes
				Carbide	Black	
Chevrolet / GMC						
1500 / 2500LD Silverado / Sierra	New body	07 - 14	16414	16204	16104	✗
		07 - 14	16412*	16204	16104	✗
	Classic body	99 - 07	16418	16204	16104	--
2500HD / 3500 Silverado / Sierra	--	11 - 15	16413	16204	16104	✗
		01 - 10	16418	16204	16104	--
Dodge / RAM						
RAM 1500	Excluding air bag suspension	11 - 14	16305	16204	16104	--
	Excluding Crew Cab	09 - 10	16422	16204	16104	--
	Mega Cab	06 - 08	16420	16204	16104	✗
	Excluding Mega Cab	02 - 08	16419	16204	16104	✗
RAM 2500	Without factory prep package	14 - 15	16427	16204	16104	✗
	--	2013	16426	16204	16104	✗
		03 - 12	16420	16204	16104	✗
RAM 3500	--	13 - 15	16426	16204	16104	✗
		03 - 12	16420	16204	16104	✗
Ford						
F-150	6.5' and 8' beds	04 - 14	16441	16204	16104	✗
	--	97 - 03	16437	16204	16104	✗
F-150	Heritage Edition	2004	16437	16204	16104	✗
F-250LD	New body	97 - 03	16437	16204	16104	✗
F-250 / F-350 Super Duty	--	11 - 15	16424	16204	16104	✗
		05 - 10	16448	16204	16104	--
		99 - 04	16443	16204	16104	--
F-450 Super Duty	Excluding Cab & Chassis	11 - 14	16424	16204	16104	✗
		08 - 10	16448	16204	16104	--
Nissan						
Titan	--	04 - 12	16470	16204	16104	--
Toyota						
Tundra	6' 5" bed, excluding Crew Max	07 - 14	16468	16204	16104	--
	Standard cab, long box	00 - 06	16465	16204	16104	✗
✗ = No drill      * Continued while supplies last						

✗ = No drill

\* Continued while supplies last



## 5TH WHEEL ACCESSORIES

- Place between rails and 5th wheel to minimize chocking (16900)
- Installs onto 5th wheel rails with pins & clips (16000)
- Eliminates grease deposits (16721)
- Reduces normal wear and tear when towing (16721)



16900



16901



16000



16721



16721025

Bulk#	Pkg#	25-Pack Tray#	GTW	Description
16900	16901	--	--	5th wheel sound dampening pad kit
--	16000	--	20,000 lbs.	5th wheel safety chain loops
16721	--	16721025	--	10" 5th wheel lube plate



## TOWING LIGHTS

- Non-scratch magnetic base
- 53204 includes a sturdy, reusable case
- Patent# D355,270

Bulk#	Pkg#	Length	Plug	Description
53200	53204	20'	4-way flat	Auxiliary towing lights



53204



53200



## BRAKE CONTROLS

- All brake controls are quick plug equipped, making installation fast and easy
- See page 184 for our complete brake control line



51140



MADE IN USA



51130

Model Name	Pkg#	6-pack Bulk#	Spare Bracket#	Maximum Axles	Activation Method	Display	Mount Angles	Level Adjust	Warranty
TriFlex	51140	51142	51144	1 - 4	Inertia tri-axis accelerometer	Digital	-20° to +70°*	Auto	Limited lifetime
Reflex	51130	51132	--	1 - 4	Inertia dual-axis accelerometer	Digital	-20° to +70°*	Auto	Limited lifetime
Discovery	51120	51122	51124	1 - 4	Time-based	Digital	Any	Auto	Limited lifetime
Venturer	51110	--	51114	1 - 3	Time-based	LED	Any	Auto	Limited lifetime

\* TriFlex and Reflex can be mounted up to 20° off the center line of the vehicle and / or up to 20° off horizontal laterally



## ORIGINAL EQUIPMENT VEHICLE-TO-TRAILER EXTENSION

- Makes the electrical connections of gooseneck and 5th wheel trailers easy
- Routes existing 7-way plug at rear of vehicle into truck bed
- Long, 7' harness
- Attractive, full-color retail packaging

Pkg#	Length	Fits
56080	7'	7-way RV blade socket



56080

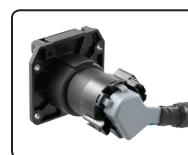


## CUSTOM VEHICLE-TO-TRAILER WIRING HARNESS EXTENSION

- Adds an additional 7-way RV blade socket to the truck bed while retaining use of the existing 7-way RV blade socket
- Makes the electrical connections of gooseneck and 5th wheel trailers easy by plugging into the factory harness
- Right-angle plug for easy installation
- Long, 7' or 10' harness options
- Attractive, full-color retail packaging



Route 7-way socket  
into truck bed



Right-angle plug  
for easy installation

Make / Model	Years	7' Pkg#	10' Pkg#
<b>Chevrolet / GMC</b>			
Silverado / Sierra	99 - 15	56070	56000
<b>Dodge / RAM</b>			
Dakota	95 - 10	56071	56001
RAM 1500	09 - 14	56070	56000
	95 - 08	56071	56001
RAM 2500 / 3500	10 - 14	56070	56000
	95 - 09	56071	56001
<b>Ford</b>			
F-150 / F-250 Light Duty	97 - 03	56070	56000
F-150, incl. Heritage Edition	04 - 14	56070	56000
F-250 / F-350 Super Duty	99 - 14	56070	56000
F-450 / F-550 Super Duty	99 - 14	56070	56000
<b>Nissan</b>			
Titan	04 - 14	56070	56000
<b>Toyota</b>			
Tundra	10 - 14	56070	56000



56000



56001



## 7-WAY RV BLADE REPLACEMENT HARNESS

- Fits 7-way RV blade sockets
- Available in three different lengths for various applications
- See page 237 for more information

Bulk#	Pkg#	Length
56601	56621	6'
56602	56622	8'
56603	56623	10'



56601



56602