



NEW PRODUCTS DESIGNED TO HELP YOU BRING IT!®

At CURT, we are driven by the idea that every new year holds potential for new and exciting possibilities. With our sights set on innovation and our standards held high as an industry leader, our product line continues to improve and grow.

Among the many new products we are introducing for 2015, some of our favorites include brand new lines of hitch and coupler locks, cargo straps and cargo bags. These products will add fresh options to your shelves and an increased focus on towing safety and cargo management for your customers.

We are also proud to offer OEM-compatible gooseneck safety chain anchors for Ford or RAM trucks. Anchors are available as individual sets or in a kit that includes a gooseneck ball, rubber hole cover and sturdy storage case.

In addition to these and other new products, as always, we continue to set the bar in the industry with our first-to-market custom-fit receiver hitch line. We bring new hitches to the market before the competition so your customers can Bring It!® whenever they are ready to hit the road.



TRAILER HITCHES

CURT trailer hitches are custom-fitted to specific vehicle years and models to provide a better product for your customer. Every day we work with real vehicles and advanced design software to bring new hitches to our lineup. For a complete guide to our entire trailer hitch line, see the application guide. **Page 42**



CUSTOM WIRING

CURT towing electrical has continued to advance over the years. We are constantly looking for new ways to meet the consumer's needs and provide easier, more reliable wiring solutions. For a complete listing of our latest electrical products see the application guide on **page 42** or the numerical wiring section on **page 334**.





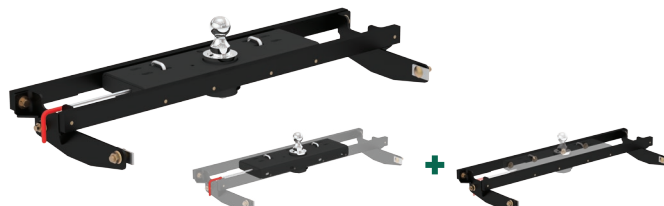
FACTORY-STYLE SAFETY CHAIN ANCHORS

Built from heavy-duty forged steel, CURT gooseneck safety chain anchors mount easily on Ford or RAM trucks with factory towing prep packages. **Page 215**



DOUBLE LOCK GOOSENECK HITCH KITS

CURT Double Lock gooseneck hitches and installation brackets are now available in combined kits for a variety of makes and models from Ford, GM, Nissan, RAM and Toyota. **Page 217**



OEM-COMPATIBLE 5TH WHEEL HITCH KITS

CURT 5th wheel hitches are now available with the option of OEM-compatible Ford or RAM 5th wheel legs. The Q24, Q20, Q16 and E16 are all available as OEM kits. **Page 232**



4-BOLT UNIVERSAL 5TH WHEEL BASE RAILS

These 5th wheel base rails feature a 4-bolt mounting design and a universal application to install with ease and fit a variety of pickups. **Page 234**



E16 & Q16 5TH WHEEL WEDGES

These 5th wheel wedges take the place of a universal wedge and allow the CURT Q16 or E16 to be compatible with a Sidewinder™ 5th wheel pin box. **Page 229**



WEIGHT DISTRIBUTION REPLACEMENT SHANK

CURT has added a new 2 1/2" weight distribution shank to give your customers more trailer options and the right fit for their towing needs. **Page 246**



PIN-STYLE TRUNNION WEIGHT DISTRIBUTION

CURT has added a new heavy-duty pin-style weight distribution hitch that features a gross trailer weight rating of 10,000 to 15,000 lbs. **Page 240**



MV ROUND BAR WD HITCHES AND KITS

MV round bar weight distribution hitches feature a new fabricated head design with grease zerk fittings and up to 14,000 lbs. GTW capacity. **Page 243**





HITCH AND COUPLER LOCKS

A brand new line of locks is now available with various styles, including dogbone locks, anti-rattle locks, right-angle locks and several new coupler locks. Additionally, the new locks feature minimal retail packaging for ultimate space savings. **Page 177**



SWIVEL HITCH PIN WITH ADAPTER SLEEVE

This hitch pin offers the convenience of a swivel pin with the versatility of a universal design. The adapter sleeve allows for use in either 1/2" or 5/8" holes. **Page 179**

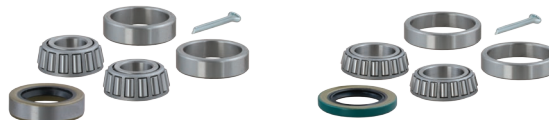


21561



WHEEL BEARING KITS

CURT wheel bearings offer a smoother ride for any trailer. They are available in 3/4", 1" and 1 1/16" diameters. **Page 173**



CHANNEL-MOUNT COUPLER

This coupler can be used with CURT channel mounts to allow for quick height adjustment. It features an easy-lock latch and comes with a three-year warranty. **Page 253**

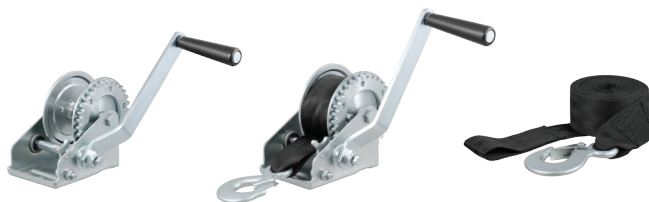


25330



HAND WINCHES & WINCH STRAPS

Hand winches are available with capacities from 900 lbs. up to 2,100 lbs. CURT winch straps are ready for recovery towing and range in length from 15' to 20'. **Page 257**



ADJUSTABLE PINTLE MOUNTS

CURT has introduced a new style of pintle mount, offering three mounting positions, 2" and 2 1/2" shank options and capacities up to 17,000 or 20,000 lbs. GTW. **Page 247**



FORGED PINTLE RECEIVER MOUNTS

CURT now offers receiver mount pintles to fit a 2 1/2" x 2 1/2" receiver tube. The hook and ball combination option has a ball capacity up to 20,000 lbs. **Page 249**





CARGO BAGS

CURT cargo bags come in multiple sizes to fit a cargo carrier or roof basket. They are waterproof, UV-resistant and feature a lockable zipper. **Page 274**



CARGO STRAPS

CURT cargo straps come with cam buckles or ratchets and in a variety of work load capacities for securing any type of cargo. **Page 276**



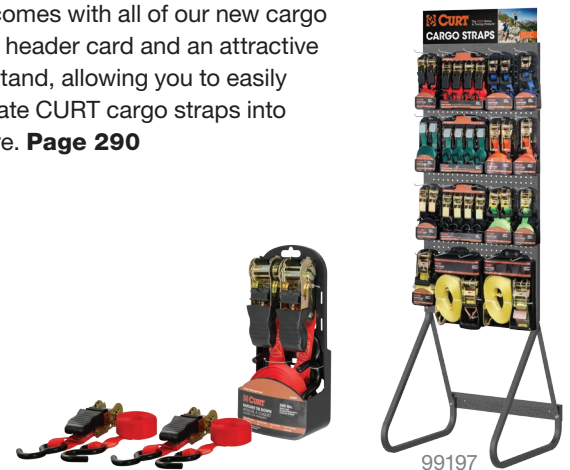
HITCH-MOUNTED TOWABLE BIKE RACKS

CURT towable bike racks and shanks allow your customer to simultaneously tow a trailer and bike rack without hassle. **Page 268**



CARGO STRAP DISPLAY STAND KIT

This kit comes with all of our new cargo straps, a header card and an attractive display stand, allowing you to easily incorporate CURT cargo straps into your store. **Page 290**

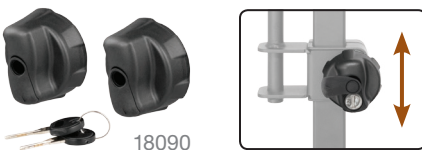


99197



TRAY-STYLE BIKE RACK LOCKING KNOBS

CURT tray-style bike rack locking knobs keep bikes more secure during travel and safe from theft. **Page 267**



18090



REPLACEMENT PLUG FOR USCAR

This vehicle-end plug replaces damaged or missing USCAR vehicle harnesses. Compatible with CURT USCAR-specific vehicle-to-trailer original equipment connectors. **Page 196**



56229

Provides this USCAR plug



TOWING STARTER KITS

Our expanded line of starter kits includes several new ball mount, hitch lock and pin & clip combinations. **Page 149**



MULTI-BALL MOUNT WITH TOW HOOK

This specialty ball mount accommodates different coupler sizes and offers a convenient recovery towing option. **Page 149**



45675